

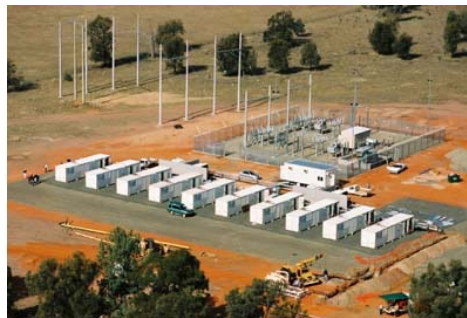


Narrabri Coal Seam Gas Utilisation Project

PEL 238, Gunnedah Basin
New South Wales

Part 3A Environmental Assessment

(Project Application 07_0023)



May, 2008



ABN: 29 094 269 780

Narrabri Coal Seam Gas Utilisation Project

PEL 238, Gunnedah Basin
New South Wales

Part 3A Environmental Assessment

(Project Application 07_0023)

Prepared by:

Eastern Star Gas Limited
GPO Box 4526
Suite 1, Level 2,
37 Pitt Street
SYDNEY NSW 2000

Telephone: (02) 9251 5599
Facsimile: (02) 9251 2299
Email: office@easternstar.com.au

In conjunction with:

R.W. Corkery & Co Pty. Limited
Geological & Environmental Consultants
ABN: 31 002 033 712

Brooklyn Office:

1st Floor, 12 Dangar Road
PO Box 239
BROOKLYN NSW 2083

Telephone: (02) 9985 8511
Facsimile: (02) 9985 8208
Email: admin@rwcorkery.com

Orange Office:

Suite 15, 256 Anson Street
ORANGE NSW 2800

Telephone: (02) 6362 5411
Facsimile: (02) 6361 3622
Email: mail@rwcorkery.com

May, 2008

Ref No. 585/05



This Copyright is included for the protection of this document

COPYRIGHT

- © Eastern Star Gas Limited, 2008
and
© R.W. Corkery & Co. Pty. Limited, 2008

All intellectual property and copyright reserved.

Apart from any fair dealing for the purpose of private study, research, criticism or review, as permitted under the Copyright Act, 1968, no part of this report may be reproduced, transmitted, stored in a retrieval system or adapted in any form or by any means (electronic, mechanical, photocopying, recording or otherwise) without written permission. Enquiries should be addressed to Eastern Star Gas Limited.

Authors' Certification

For the submission of an Environmental Assessment prepared in accordance with Section 75 of the Environmental Planning and Assessment Act 1979

EA prepared by: Timothy P. Donnan
Company Eastern Star Gas Limited
Qualifications M.Sc, B.Sc
Address Suite 1, Level 2, 37 Pitt St, Sydney NSW 2000

EA prepared in conjunction with: Robert W. Corkery
Company R.W. Corkery & Co. Pty. Limited
Qualifications M.Appl. Sc, B.Appl. Sc (Hons)
Address 12 Dangar Road, BROOKLYN NSW 2083

NSW Major Project Application submitted by: Eastern Star Gas Limited
Suite 1, Level 2, 37 Pitt St, Sydney NSW 2000

Project site address & land details:

Bibblewindi State Forest 1424, Lot 7/DP 757126, Pilliga East State Forest 532, Lot 1/DP 771141, Lot 9/DP 705417, Lot 1/DP 790376, Lot 15/DP 757084, Lot 1/DP 248407, Lot 22/DP 757086, Lot 32/DP 1034772, Lot 31/DP 1034772, Lot 2 /DP 860120, Lot 22/DP 757086, Lot 1/DP 660118 and Lot 17/DP 757086.
The Project Site is located approximately south and southwest of Narrabri straddling the Newell Highway towards Coonabarabran.

Project Outline:

The *Environmental Assessment* refers specifically to the following activities.

- The construction and operation of the gas gathering system linking the coal seam gas production wells with the main flow line and compression facilities.
- The construction and operation of a 250mm diameter, glass fibre reinforced gas flow line linking the gas gathering system hub and compression facilities with the Wilga Park Power Station.
- The construction and operation of the expanded Wilga Park Power Station to 40MW.

Assessment of Environmental Impact:

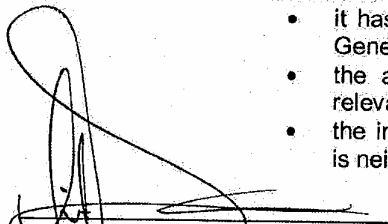
The assessment of environmental impacts of this project specifically includes the matters referred to in the Director-General's requirements dated 17 July 2007 pursuant to Section 75F of the *Environmental Planning and Assessment Act 1979*

Declaration:

We hereby declare that we have overseen the preparation of this *Environmental Assessment* and, to the best of our knowledge:

- it has addressed the specific issues raised in the Director-Generals' Requirements dated 17 July 2007;
- the assessment contains all available information that is relevant to the environmental assessment of the project; and
- the information contained in the *Environmental Assessment* is neither false nor misleading.

Signature:



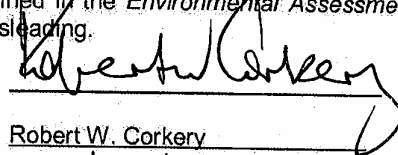
Name:

Timothy P Donnan

Date:

28/04/08

Signature:



Name:

Robert W. Corkery

Date:

28/04/08

This page has intentionally been left blank

CONTENTS

	Page		Page
AUTHORS' CERTIFICATION	iii	SECTION 3 PROJECT DESCRIPTION	
COMMONLY USED ACRONYMS	ix	3.1 INTRODUCTION	3-3
EXECUTIVE SUMMARY	xi	3.2 OVERVIEW AND LOCATION OF THE PROJECT COMPONENTS	3-3
SECTION 1: INTRODUCTION		3.2.1 Gas Gathering Systems	3-3
1.1 SCOPE	1-3	3.2.2 Gas Compression Facilities	3-6
1.2 FORMAT OF THE ENVIRONMENTAL ASSESSMENT	1-5	3.2.3 Gas Flow Line	3-6
1.3 THE PROPONENT AND PROJECT BACKGROUND	1-6	3.2.3.1 Gas Flow Line Corridor	3-6
1.4 CURRENT APPROVALS, LEASES, LICENCES AND ACTIVITIES	1-8	3.2.3.2 Access to the Gas Flow Line Corridor	3-12
1.5 THE PROJECT SITE	1-10	3.2.3.3 Gas Flow Line Design Specifications	3-12
1.6 NATURAL GAS AND COAL SEAM GAS – ITS OCCURRENCE AND POTENTIAL PRODUCTION	1-12	3.2.4 Wilga Park Power Station Expansion and Substation Upgrade	3-12
1.6.1 Introduction	1-12	3.3 APPROVALS REQUIRED	3-14
1.6.2 Natural Gas	1-12	3.4 CONSTRUCTION ACTIVITIES	3-14
1.6.3 Coal Seam Gas	1-12	3.4.1 Introduction	3-14
1.7 ENVIRONMENTAL MANAGEMENT AND PROJECT DOCUMENTATION	1-14	3.4.2 Installation of the Gas Gathering System and Gas Flow Line	3-16
1.7.1 Environmental Management	1-14	3.4.3 Newell Highway Crossing	3-18
1.7.2 Project Documentation	1-15	3.4.4 Bohena Creek Crossing	3-20
1.8 MANAGEMENT OF INVESTIGATIONS	1-15	3.4.5 Shire Road Crossings	3-21
SECTION 2 STRATEGIC JUSTIFICATION		3.4.6 Wilga Park Power Station Expansion	3-21
2.1 THE NEED FOR THE PROJECT	2-3	3.4.7 Equipment	3-23
2.2 CURRENT DEMAND AND SUPPLY OF ELECTRICITY IN NSW	2-3	3.4.8 Pipe Delivery and Bulk Materials Supply	3-23
2.2.1 Electricity Demand	2-3	3.4.9 Utilities and Services	3-23
2.2.2 Electricity Supply	2-4	3.4.9.1 Water	3-23
2.3 EXISTING COMMERCIAL ARRANGEMENTS	2-5	3.4.9.2 Power	3-24
2.4 THE LOCATION, SCALE AND SCOPE OF PROJECT	2-6	3.4.9.3 Communications	3-24
2.5 ENVIRONMENTAL BENEFITS	2-7	3.4.10 Waste Management	3-24
2.6 PROJECT BENEFITS	2-8	3.5 PROJECT OPERATIONS	3-25
2.7 THE STAGED DEVELOPMENT OF A SUSTAINABLE GAS FIELD	2-8	3.5.1 Gas Gathering System and Gas Flow Line	3-25
2.8 CONCLUSIONS	2-9	3.5.1.1 Operations	3-25
		3.5.1.2 Utilities and Services	3-25
		3.5.1.3 Waste Management	3-25
		3.5.2 Wilga Park Power Station	3-25
		3.5.2.1 Operations	3-25
		3.5.2.2 Utilities and Services	3-25
		3.5.2.3 Waste Management	3-25
		3.6 HOURS OF OPERATION AND PROJECT TIMETABLE	3-26
		3.6.1 Construction Phase	3-26
		3.6.2 Operating Phase	3-26
		3.7 EMPLOYMENT	3-26
		3.7.1 Construction Phase	3-26
		3.7.2 Operating Phase	3-27

CONTENTS

	Page		Page
3.8	REHABILITATION.....	3-27	
3.8.1	Rehabilitation Objectives.....	3-27	
3.8.1.1	Forestry Lands.....	3-27	
3.8.1.2	Farmland.....	3-28	
3.8.2	Monitoring and Maintenance.....	3-28	
3.9	PROJECT ALTERNATIVES.....	3-29	
3.9.1	Introduction.....	3-29	
3.9.2	Flaring and / or Venting of Produced Gas.....	3-29	
3.9.3	Gas Flow Line Route Alternatives ...	3-31	
3.9.4	Other Routes.....	3-35	
3.9.5	Conclusions.....	3-35	
SECTION 4 ISSUE IDENTIFICATION AND PRIORITISAION			
4.1	INTRODUCTION.....	4-3	
4.2	ISSUE IDENTIFICATION.....	4-3	
4.2.1	Introduction.....	4-3	
4.2.2	Consultation.....	4-3	
4.2.2.1	Community Consultation ..	4-3	
4.2.2.2	Consultation with the Wider Community.....	4-4	
4.2.2.3	Consultation with Government Agencies.....	4-4	
4.2.2.4	Social Impact Assessment Consultation.....	4-6	
4.2.3	Review of Planning Issues, Environmental Guidelines and Relevant Legislation.....	4-7	
4.2.3.1	Introduction.....	4-7	
4.2.3.2	State Planning Issues.....	4-7	
4.2.3.3	Regional Planning Issues.....	4-9	
4.2.3.4	Environmental Guidelines.....	4-9	
4.2.3.5	Legislation Relevant to the Environmental Assessment.....	4-9	
4.2.4	Summary of Environmental Issue Identification.....	4-10	
4.3	RISK IDENTIFICATION AND ANALYSIS	4-11	
4.3.1	Environmental Issue Prioritisation ...	4-15	
SECTION 5 IMPACT ASSESSMENT AND MANAGEMENT			
5.1	BACKGROUND INFORMATION.....	5-3	
5.1.1	Topography.....	5-3	
5.1.2	Geology.....	5-3	
5.1.3	Meteorology.....	5-3	
5.1.3.1	Temperature.....	5-4	
5.1.3.2	Rainfall.....	5-4	
5.1.3.3	Relative Humidity.....	5-4	
5.1.3.4	Wind.....	5-5	
5.1.4	Land Ownership and Land Use.....	5-5	
5.1.4.1	Land Titles and Ownership.....	5-5	
5.1.4.2	Land Use.....	5-11	
5.2	AIR QUALITY, GREENHOUSE GASES AND AIR DYNAMICS.....	5-14	
5.2.1	Air Quality.....	5-14	
5.2.1.1	Introduction.....	5-14	
5.2.1.2	The Existing Environment.....	5-14	
5.2.1.3	Potential Impacts and Assessment Criteria.....	5-15	
5.2.1.4	Mitigation of Potential Impacts.....	5-15	
5.2.1.5	Assessment of Potential Impacts.....	5-16	
5.2.1.6	Modelling Assumptions... ..	5-17	
5.2.1.7	Modelling Results.....	5-18	
5.2.2	Greenhouse Gases.....	5-19	
5.2.2.1	Introduction.....	5-19	
5.2.2.2	Emissions Review.....	5-23	
5.2.2.3	Gas Combustion for Electricity Generation.....	5-24	
5.2.2.4	Emissions Associated with CSG.....		
5.2.3	Air Dynamics.....	5-28	
5.2.3.1	Introduction.....	5-28	
5.2.3.2	Plume Rise Assessment.....	5-28	
5.3	FLORA.....	5-30	
5.3.1	The Existing Environment.....	5-30	
5.3.1.1	Literature Review.....	5-30	
5.3.1.2	Field Surveying.....	5-31	
5.3.2	Potential Impacts.....	5-34	
5.3.3	Key Threatening Processes.....	5-35	
5.3.3.1	Key Threatening Process – Degradation of Native Riparian Vegetation.....	5-35	
5.3.3.2	Invasion of Plant Communities by Exotic Perennial Grasses.....	5-35	
5.3.3.3	Clearing of Native Vegetation.....	5-36	
5.3.3.4	Removal of Dead Wood and Dead Trees.....	5-36	
5.3.4	Mitigation of Potential Impacts.....	5-37	
5.3.5	Assessment of Impacts.....	5-39	
5.3.6	Conclusions.....	5-45	
5.4	FAUNA.....	5-45	
5.4.1	The Existing Environment.....	5-45	
5.4.1.1	Introduction.....	5-45	
5.4.1.2	Terrestrial Survey Methodology.....	5-47	

CONTENTS

	Page		Page
5.4.1.3	Terrestrial Survey Results.....	5.9.4.1	Construction Noise.....
	5-48	5.9.4.2	Operational Noise
5.4.1.4	Threatened Species, Populations, EEC's or Critical Habitat	5.9.4.3	Public Road Traffic Noise.....
	5-50		5-86
5.4.2	Potential Impacts	5.9.5	Monitoring
	5-52		5-86
5.4.3	Mitigation of Potential Impacts.....	5.10	TRAFFIC MANAGEMENT.....
	5-52		5-86
5.4.4	Assessment of Impacts	5.10.1	Introduction
	5-53		5-86
5.4.5	Conclusions	5.10.2	The Existing Environment.....
	5-59		5-86
5.5	SOILS AND LAND CAPABILITY / SUITABILITY.....	5.10.3	Potential Impacts
	5-59		5-86
5.5.1	Introduction.....	5.10.4	Mitigation of Potential Impacts.....
	5-59		5-87
5.5.2	Soil Categories	5.10.5	Assessment of Impacts.....
	5-59		5-87
5.5.3	Soil Properties	5.11	VISUAL AMENITY.....
	5-60		5-88
5.5.3.1	Physical and Chemical Attributes.....	5.11.1	Introduction
	5-60		5-88
5.5.3.2	Stripping Suitability of Soil Materials	5.11.2	The Existing Environment.....
	5-64		5-88
5.5.4	Land Capability and Agricultural Land Suitability	5.11.3	Potential Impacts
	5-64		5-89
5.5.4.1	Agricultural Land Suitability Classification ..	5.11.4	Mitigation of Potential Impacts.....
	5-65		5-89
5.5.5	Soil Management and Mitigation of	5.11.5	Assessment of Impacts.....
5.5.6	Assessment of Impacts		5-90
	5-67	5.12	EUROPEAN HERITAGE
5.6	ABORIGINAL HERITAGE		5-90
	5-67	5.12.1	Introduction
5.6.1	Introduction.....		5-90
5.6.2	Legislative Context	5.12.2	The Existing Environment.....
	5-68		5-91
5.6.3	Consultation with the Aboriginal Community	5.12.3	Potential Impacts
	5-68		5-91
5.6.4	The Existing Environment.....	5.12.4	Mitigation of Potential Impacts.....
	5-68		5-91
5.6.5	Disturbance History Mapping.....	5.12.5	Assessment of Impacts.....
	5-69		5-91
5.6.6	The Archaeological Record	5.13	HAZARDS AND RISKS.....
	5-69		5-92
5.6.7	The Predictive Model		
	5-70	SECTION 6 STATEMENT OF COMMITMENTS	
5.6.8	Field Surveying.....	SECTION 7 PROJECT EVALUATION AND JUSTIFICATION	
	5-71		
5.6.9	Survey Results.....	7.1	INTRODUCTION.....
	5-71		7-3
5.6.10	Discussion	7.1.1	Residual Environmental Risk.....
	5-74		7-3
5.6.11	Mitigation of Potential Impacts.....	7.1.2	Ecologically Sustainable Development.....
	5-75		7-4
5.7	GROUNDWATER	7.1.2.1	The Precautionary Principle
	5-76		7-5
5.7.1	Existing Environment.....	7.1.2.2	Intergenerational Equality
	5-76		7-5
5.7.2	Potential Impacts	7.1.2.3	Conservation of Biodiversity and Ecological Integrity.....
	5-77		7-6
5.7.3	Mitigation of Potential Impacts.....	7.1.2.4	Improved Valuation and Pricing of Natural Resources.....
	5-77		7-6
5.7.4	Assessment of Impacts	7.2	JUSTIFICATION OF THE PROJECT
	5-77		7-7
5.8	SURFACE WATER.....	7.2.1	Biophysical Considerations.....
	5-78		7-7
5.8.1	Existing Environment.....	7.2.1.1	Greenhouse Gas and Air Quality Impacts.....
	5-78		7-7
5.8.1.1	Regional Drainage	7.2.1.2	Flora and Fauna.....
	5-78		7-7
5.8.1.2	Project Site Drainage.....	7.2.1.3	Soils and Land Capability
	5-78		7-8
5.8.2	Mitigation of Potential Impacts.....	7.2.1.4	Aboriginal Heritage
	5-78		7-8
5.8.3	Assessment of Impacts	7.2.1.5	Noise Impacts
	5-79		7-8
5.9	NOISE.....	7.2.1.6	Traffic
	5-79		7-8
5.9.1	The Existing Acoustic Environment ..		
	5-79		
5.9.2	Potential Impacts and Assessment Criteria		
	5-80		
5.9.3	Mitigation of Potential Impacts.....		
	5-81		
5.9.4	Assessment of Impacts		
	5-82		

CONTENTS

	Page		Page
7.2.1.7	7-8	Table 5.4	18
7.2.1.8	7-9	Table 5.5	24
7.2.1.9	7-9	Table 5.6	24
7.2.1.10	7-9	Table 5.7	25
7.3	7-9	Table 5.8	26
SECTION 8	REFERENCES	Table 5.9	26
SECTION 9	GLOSSARY OF ACRONYMS, TECHNICAL TERMS & SYMBOLS	Table 5.10	27
APPENDICES		Table 5.11	29
Appendix 1	A1-1	Table 5.12	29
Appendix 2	A2-1	Table 5.13	29
Appendix 3	A3-1	Table 5.14	33
Appendix 4	A4-1	Table 5.15	35
Appendix 5	A5-1	Table 5.16	60
TABLES		Table 5.17	81
Table 3.1	3-12	Table 5.18	82
Table 3.2	3-23	Table 5.19	85
Table 3.3	3-26	FIGURES	
Table 3.4	3-31	Figure 1.1	1-4
Table 4.1	4-12	Figure 1.2	1-11
Table 4.2	4-13		
Table 4.3	4-13		
Table 4.4	4-14		
Table 4.5	4-14		
Table 5.1	12		
Table 5.2	15		
Table 5.3	16		

CONTENTS

	Page		Page
Figure 1.3	Methane Generation	1-13	
Figure 1.4	Typical Production Profile for a Coal Seam Gas Well	1-14	
Figure 2.1	Forecast NSW Summer Electricity Demand Growth (Source: NEMMCO).....	2-3	
Figure 2.2	Forecast NSW Electricity Consumption (Source: NEMMCO)	2-4	
Figure 3.1	Project Components	3-4	
Figure 3.2	Gas Gathering Systems.....	3-5	
Figure 3.3	Trailer – mounted Field Gas Compressor – Isometric View.....	3-6	
Figure 3.4	Section 1 of the Gas Flow Line (Points A – C)	3-8	
Figure 3.5	Section 2 of the Gas Flow Line (Points C – E)	3-9	
Figure 3.6	Section 3 of the Gas Flow Line (Points E – H)	3-10	
Figure 3.7	Section 4 of the Gas Flow Line (Points H – J).....	3-11	
Figure 3.8	Wilga Park Power Station – Expanded Site Layout.....	3-13	
Figure 3.9	Indicative Gas Flow Line Installation Sequence – Forestry Lands.....	3-19	
Figure 3.10	Newell Highway Crossing	3-20	
Figure 3.10	Bohena Creek Crossing	3-22	
Figure 3.12	Gas Flow Line Route Alternatives ...	3-36	
Figure 5.1	Temperature	5-4	
Figure 5.2	Rainfall.....	5-5	
Figure 5.3	Wind Roses	5-6	
Figure 5.4	Land Title Data – Gas Flow Line Corridor.....	5-7	
Figure 5.5	Land Ownership - Gas Flow Line Corridor.....	5-9	
Figure 5.6	Residences Surrounding Wilga Park Power Station	5-13	
Figure 5.7	Predicted NO ₂ Concentrations	5-21	
Figure 5.8	Vegetation Communities	5-32	
Figure 5.9	Location of Fauna Survey Apparatus	5-49	
Figure 5.10	Location of Threatened Species Observations During the Survey Effort	5-51	
Figure 5.11	Aboriginal Heritage Recorded Sites	5-72	
Figure 5.12	All Aboriginal Sites Recorded in the Pilliga State Forests.....	5-73	
Figure 5.13	Predicted Noise Levels around Wilga Park Power Station	5-83	
PLATES			
Plate 3.1	A 3MW Generator.....	3-15	
Plate 3.2	A bank of 3MW Generators	3-15	
Plate 3.3	Trenching Process.....	3-17	
Plate 3.4	Adtech Installation Machine.....	3-17	
Plate 3.5	Gas Flow Line Placement.....	3-17	
Plate 5.1	Scarred Tree Located Within the Vicinity of the Project Site	5-73	
SPECIALIST CONSULTANT STUDIES COMPENDIUM			
PART 1:	AIR QUALITY IMPACT ASSESSMENT		
PART 2:	FLORA ASSESSMENT		
PART 3:	FAUNA ASSESSMENT		
PART 4:	SOILS ASSESSMENT		
PART 5:	ABORIGINAL HERITAGE ASSESSMENT		
PART 6:	NOISE IMPACT ASSESSMENT		

COMMONLY USED ACRONYMS AND SYMBOLS

Acronyms

AEMR	Annual Environmental Management Report
CSG	Coal Seam Gas
DECC	Department of Environment and Climate Change
DoP	Department of Planning
DPI-MR	Department of Primary Industries – Mineral Resources
EA	Environmental Assessment
NCSGP	Narrabri Coal Seam Gas Project (“the Project”)
NCSGJV	Narrabri Coal Seam Gas Joint Venture
GGG	Gas Gathering System
NCSGPJV	Narrabri Coal Seam Gas Project Joint Venture
PAL	Petroleum Assessment Lease
PALA	Petroleum Assessment Lease Application
PEL	Petroleum Exploration Licence
WPPS	Wilga Park Power Station

Symbols

TCF	Trillion cubic feet (of gas) – equivalent to 1 000 petajoules
PJ	Petajoules – a unit of energy equivalent to 10 ¹⁵ joules
BCF	Billion cubic feet (of gas) – equivalent to 1 PJ
TJ	Terrajoule – a unit of energy equivalent to 10 ¹² joules
MCF	Million cubic feet (of gas) – equivalent to 1TJ

EXECUTIVE SUMMARY

Introduction

This *Environmental Assessment* is submitted by Eastern Star Gas Limited (“the Proponent”) on behalf of the Gunnedah Gas Joint Venture (“the Joint Venture”), which comprises Eastern Star Gas Limited(65%) and Gatar Exploration Ltd (35%) in support of its project application for the Narrabri Coal Seam Gas Utilisation Project (“the Project”). The Project is an important component in the further development of the Joint Venture’s key objectives, which include the expansion of gas production in Petroleum Exploration Licence 238 (“PEL238”) which will contribute to the reduction of NSW’s dependence upon gas imported from the Gippsland Basin (Victoria) and the Cooper Basin (South Australia) for supply of its residential, commercial and industrial needs.

The *Environmental Assessment* covers both the construction and operational phases of the Project and provides an assessment of the key environmental issues relevant to the Project.

Background

The Joint Venture has completed stages one to three of a five stage program for the development of Coal Seam Gas (CSG) resources located within PEL 238, near Narrabri, NSW (**Figure 1**). Stages one through three have involved the systematic evaluation of the CSG reservoir, corehole drilling, the testing of various well completion techniques and subsequent gas production testing at the Bohena and Bibblewindi CSG Pilots. The recent core drilling program has been specifically formulated to establish a base of marketable gas reserves and has assisted in the completion of the initial reserves certification of 1300PJ and 185PJ of 3P and 2P gas reserves respectively in early 2008.

A key component to the certification of gas reserves in this manner is the need to demonstrate gas production from the pilot wells to establish the production curves, the reliability of the gas reservoir and flow characteristics. Therefore, with the long term production of CSG underway at the Bohena and Bibblewindi CSG Pilots, the utilisation of gas produced during this phase has been proposed as a means to avoid the wasteful and environmentally undesirable venting of pilot production gas and to make economically rational use of the gas whilst the project continues to mature. The Narrabri Coal Seam Gas Utilisation Project is effectively a component of Stage 3 as the 12 wells currently on production testing are yet to reach maturity.

The project will involve gathering and delivery of production test gas to the Wilga Park Power Station which will, in turn, be expanded from 11 MW to 40 MW. The budgeted cost for expansion of the power station and installation of gas gathering and flow line facilities to deliver gas to the power station exceeds \$46 million.

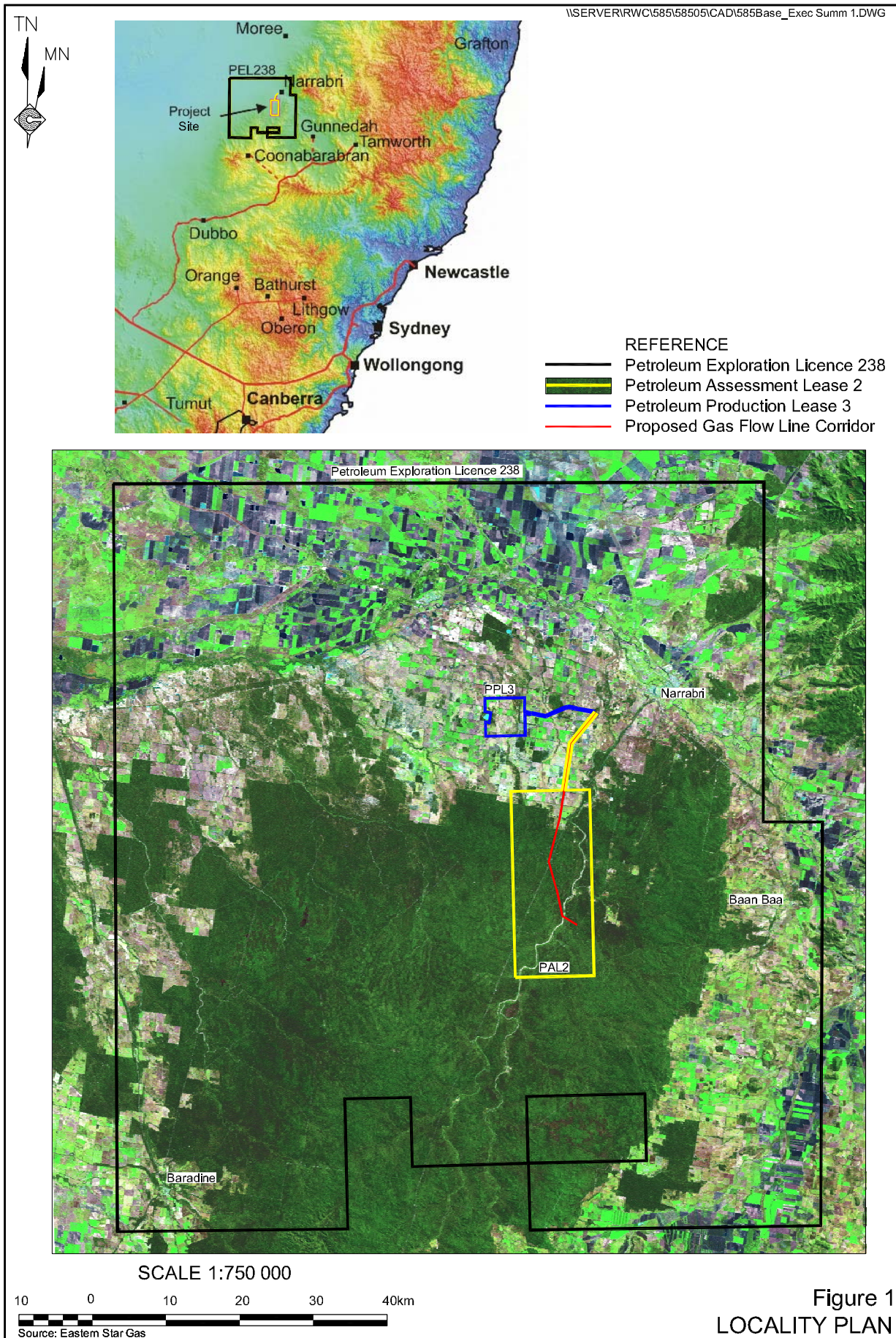


Figure 1
 LOCALITY PLAN

The Project

The Narrabri CSG Utilisation Project comprises four main components, the locations of which are illustrated in **Figure 2**.

1. A gas gathering system at the Bibblewindi and Bohena CSG Pilots.
The gas gathering system will comprise a network of small diameter (200mm) pipes transporting gas from individual wells to an inlet hub and gas compression facility. The system will collect gas from nine wells at the Bibblewindi CSG Pilot and three wells at the Bohena CSG Pilot.
2. Gas compression facilities at the Bibblewindi and Bohena CSG Pilots.
Each gas compression facility will be trailer-mounted and increase gas pressure from approximately 100kPa to 1000kPa.
3. A 32km long buried gas flow line.
The flow line will be located within a 20m wide corridor although a width of only 10m will be required for all construction activities.
4. The expansion of generating capacity at the existing Wilga Park Power Station.
The power station will be expanded to a capacity of 40MW through the installation of ten 3MW gas driven reciprocating engine generators. The power station will supply electricity into the 66kV network through a substation adjacent to the power station.

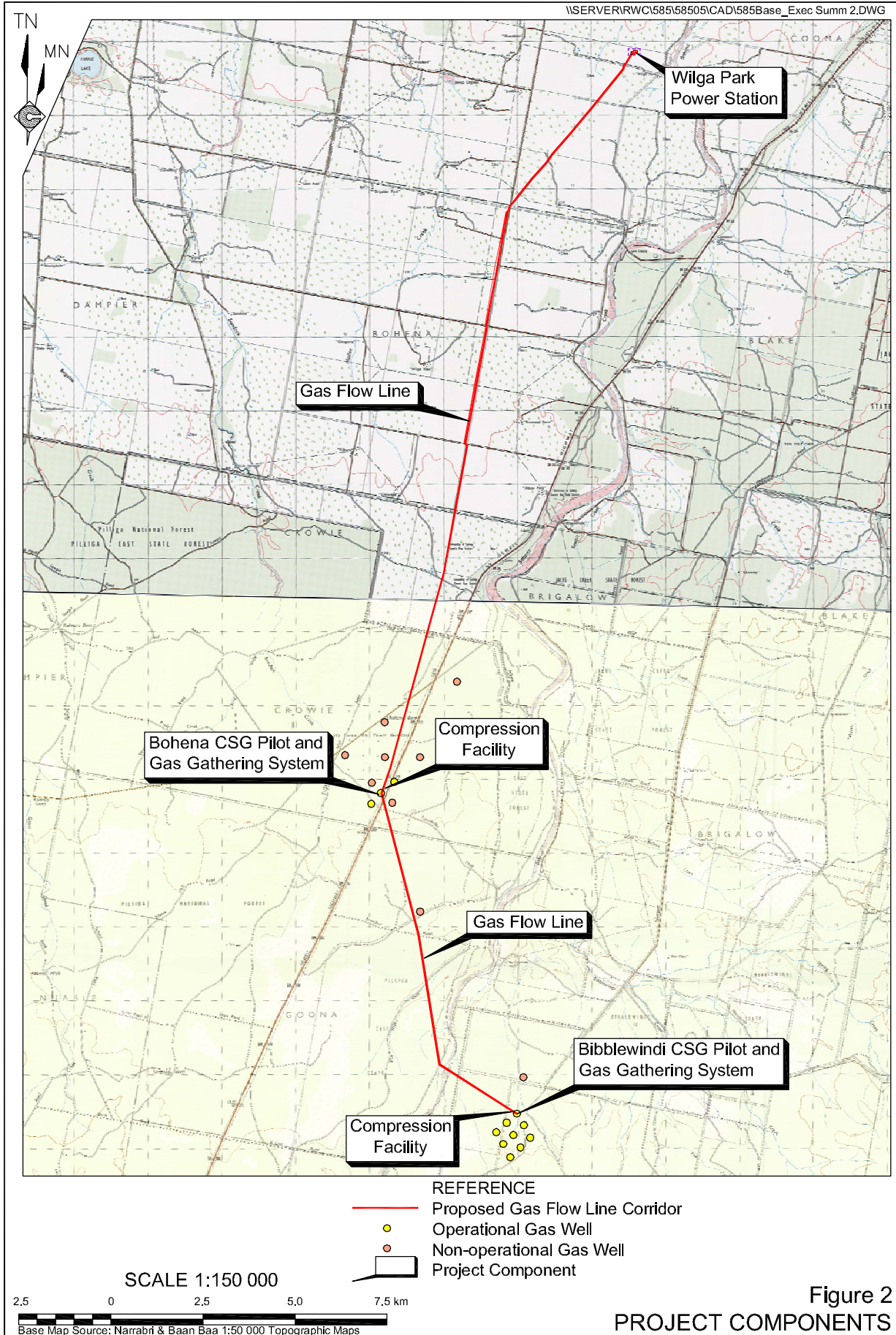
Construction Activities

The Project construction activities will involve the following.

1. Installation of the GGS and gas flow line in both Forestry lands and cleared agricultural lands.
2. Crossing of Bohena Creek.
3. Crossing of the Newell Highway and Shire Roads.
4. The expansion of the existing Wilga Park Power Station facility.

The installation of the gas gathering system and gas flow line will involve the following activities.

- Surveying the Gas Flow Line Corridor.
- Vegetation Clearance.
- Topsoil Stripping and Stockpiling.
- Trench Surveying.



- Trenching.
- Flow Line Jointing.
- Pipe Hydrotesting.
- Backfilling and Rehabilitation.

The expansion of the Wilga Park Power Station would involve the following activities.

- Site surveying.
- Importation and compaction of approximately 1500m³ of suitable base material to create the compound surface within the extended site.
- Excavation, construction / installation of all subsurface pipe work.
- Construction of concrete foundations for all generators and new buildings.
- Construction of all new buildings.
- Progressive placement and connection of all new generators.
- Installation of upgraded transformers and related electrical equipment.
- Erection of a perimeter fence.

Construction activities would be undertaken between 7:00am and 6:00pm, 7 days per week.

Project Operations

The operation of the GGS and gas flow line does not require any specific operational activities on behalf of the Proponent. Once the GGS connects the CSG wells to the gas flow line inlet and compression unit, operation is automatic. The main operational focus will be monitoring of the CSG wells and the compression units.

The operation of the power station involves predominantly monitoring and planned maintenance activities on the gas driven engines. The Proponent employs two full time power station attendants to complete all activities associated with the operation of the facility.

Environmental Setting

The Project Site for the Narrabri Coal Seam Gas Utilisation Project is located in two distant areas, namely:

- (a) forested lands within the Bibblewindi and Pilliga East State Forests; and
- (b) cleared agricultural lands.

The route of the gas flow line corridor was selected with due consideration of land use, environmental, cultural heritage and available access. The exact location was negotiated with each respective land owner.

The proposed Wilga Park Power Station expansion would occur on and adjacent to the existing facility on cleared, freehold lands. The selected site makes best use of current power station infrastructure and minimises the overall area impacted by the expansion.

Ecological assessments undertaken for the Project identified the following.

- Six vegetation communities including the Brigalow Endangered Ecological Community occur within the Study Area.
- Fourteen Threatened flora species are considered likely to occur within the locality though none were detected during field surveys.
- Nine Threatened fauna species were recorded during field surveys of the Study Area.
- No critical habitats Threatened ecological fauna communities or populations occur within the Study Area.
- With the implementation of recommended mitigation measures, there would be no significant impacts on any Endangered Ecological Communities, critical habitat, Threatened flora or fauna species or population.

No Aboriginal cultural heritage sites were located within the gas flow line corridor. The corridor traverses comparatively flat topography grading gently to the north with only one substantial natural drainage feature at Bohena Creek.

Impact Assessment

The design of the Project and the inclusion of a range of mitigation measures and safeguards have assisted to minimise the overall impact of the Project upon the local environment. The following conclusions have been drawn in the assessment of the various environmental features within and surrounding the Project Site.

- **Greenhouse Gas and Air Quality Impacts**

The net benefit the Project presents to a measurable reduction in greenhouse gas impacts has been described. The utilisation of CSG produced from the Bibblewindi and Bohena CSG Pilots represents an environmentally responsible method of consumption in light of the relative impact of atmospheric venting of this resource. Air pollutant levels are predicted to remain below DECC criteria for fugitive dust emissions and stated SO₂ and NO₂ emission limits. The emission of CO₂ from the combustion of CSG at the Wilga Park Power Station will result in a minor increase in the current State and National emission inventory.

- **Flora and Fauna**

Modification and alteration of native vegetation and habitat for faunal species has been reduced to the smallest extent possible in light of the project design components and rehabilitation objectives. No threatened species have been identified as likely to be impacted by the Project

- **Soils and Land Capability**

The impact on the Project Site's soils and land capability have been adequately described and mitigated to acceptable levels. Any losses in these terms would be temporary and manageable given the safeguards employed to protect its inherent value to the rehabilitation process.

- **Aboriginal Heritage**

The Project will not impact on any known places or items of Aboriginal heritage significance within the Project Site. The Proponent has outlined a range of safeguards, controls and mitigation measures that will reduce the risk of impact on previously undiscovered places and items of Aboriginal heritage significance.

- **Noise Impacts**

Whilst the Project will generate industrial noise in excess of current background levels, these levels will remain within stated DECC criteria for all construction and operational activities.

- **Traffic**

Traffic levels along the Newell Highway would not increase significantly. Localised traffic increases on forestry and Shire roads for the duration of the construction phase are likely; however, they are not expected to result in any significant issues with the safe and efficient flow of traffic in and around the Project Site. Adequate traffic management planning will ensure that no public road is closed at any time during the construction phase of the Project.

- **Visual Amenity**

The Project would result in a short to medium term (3-5 year) alteration of the visual amenity along the southern section of the flow line corridor where clearing will be undertaken in both the Bibblewindi and Pilliga East State Forests. The visual impact of the Project on the cleared agricultural lands is consistent with the land use type and does not represent a significant departure from the ongoing operation of cropping and grazing enterprises across this environment.

- **European Heritage**

The Project will not impact on any known places or items of European heritage significance within the Project Site. The Proponent has outlined an extensive range of safeguards, controls and mitigation measures that reduce the risk of impact on previously undiscovered places and items of significance.

- **Potential Land Use Conflicts**

The Proponent has negotiated with each of the land owners along the proposed gas flow line corridor and in all cases, except one, has reached a satisfactory agreement to avoid any unacceptable impacts upon the land uses of the land within and adjoining the corridor. The only case where agreement has not been amicably reached is currently going before an Arbitrator appointed by Minister of Mineral Resources.

- **Socio-economic Considerations**

The impact of the Project on the local and regional socio-economic environment has been determined as positive, with measurable increases in direct and indirect employment opportunities and the utilisation of the region's extensive network of retail and industrial service providers.

The Project, as an integral part of the Joint Venture's objectives for development of CSG resources in PEL238, would also have significant economic benefits to NSW through the generation of royalty revenue and the establishment of additional, gas fired electricity generation capacity.

- **Conclusions**

The Narrabri Coal Seam Gas Utilisation Project presents a feasible option for the consumption of gas produced from within PAL2. The Project has been designed to address the key issues raised by all levels of Government, landholders affected by the Project and the wider community.

The Project provides a pathway for the consumption of CSG produced during the extended testing of CSG wells in preference to the venting of gases to atmosphere. In addition to the environmental benefits offered by the Project, the construction and operation of the project would result in a significant economic boost to the Narrabri Region.