

Notice of Modification

Section 75W of the *Environmental Planning and Assessment Act 1979*

As delegate of the Minister for Planning, I modify the project approval referred to in Schedule 1, as set out in Schedule 2.


Daniel Keary
Director
Industry, Key Sites & Social Projects

Sydney

22ND

JULY

2014

SCHEDULE 1

The project approval (06_0334) granted by the A/Deputy Director-General for the Tharbogang Quarry and Landfill on 8 July 2010.

SCHEDULE 2

1. In the definitions, delete the definition for Department, Director-General, Minister, RTA, Site, and applicant where it secondly occurs, and insert the following definitions in alphabetical order:

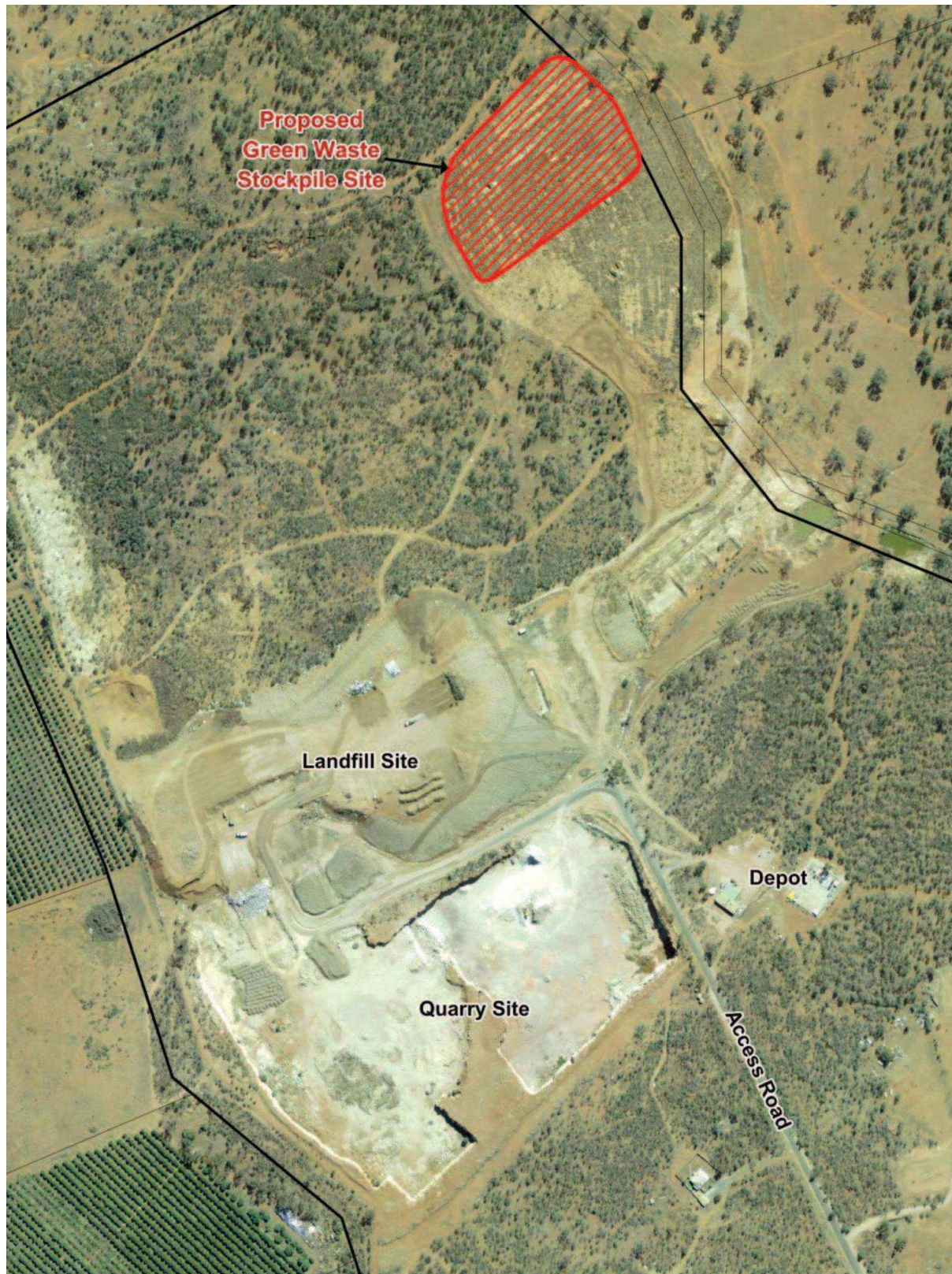
Department Minister MOD 2 Secretary	Department of Planning & Environment Minister for Planning, or delegate Modification Application (06_0034 MOD 2) and supporting documentation titled <i>Tharbogang Landfill and Quarry Expansion Project: Preliminary Environmental Assessment – Modification</i> , prepared by CPE Associates Pty Ltd for Griffith City Council and dated June 2014 Secretary of the Department, or nominee
--	---
2. In the conditions, delete all instances of the word Director-General and insert instead the word Secretary.
3. In condition 2 of Schedule 2, delete conditions (b) to (d) and insert the following:
 - (b) site layout plan as shown in Appendix 1 as amended by the drawings in Appendix 1A;
 - (c) Statement of Commitments;
 - (d) MOD 1;
 - (e) MOD 2; and
 - (f) the conditions of this consent.
4. Insert the following after condition 5 of Schedule 2:
 - 5(a). Within 3 months of any modification approval, the Proponent must prepare and implement a revised version of any relevant management plan or monitoring program to the satisfaction of the Secretary.
5. Insert the following after condition 8 of Schedule 2:
 - 8(a). The landfill shall not exceed the maximum volume for each landfill cell specified in Table A. Calculation of the cell volume shall include the intermediate non-waste layers but shall not include the final cell cap, leachate barrier or leachate drainage layer.

Table A – Maximum volume for each landfill cell

Cell 1	Cell 2	Cell 3	Cell 4	Cell 5
131,634m ³	124,781m ³	119,121m ³	142,096m ³	142,497m ³

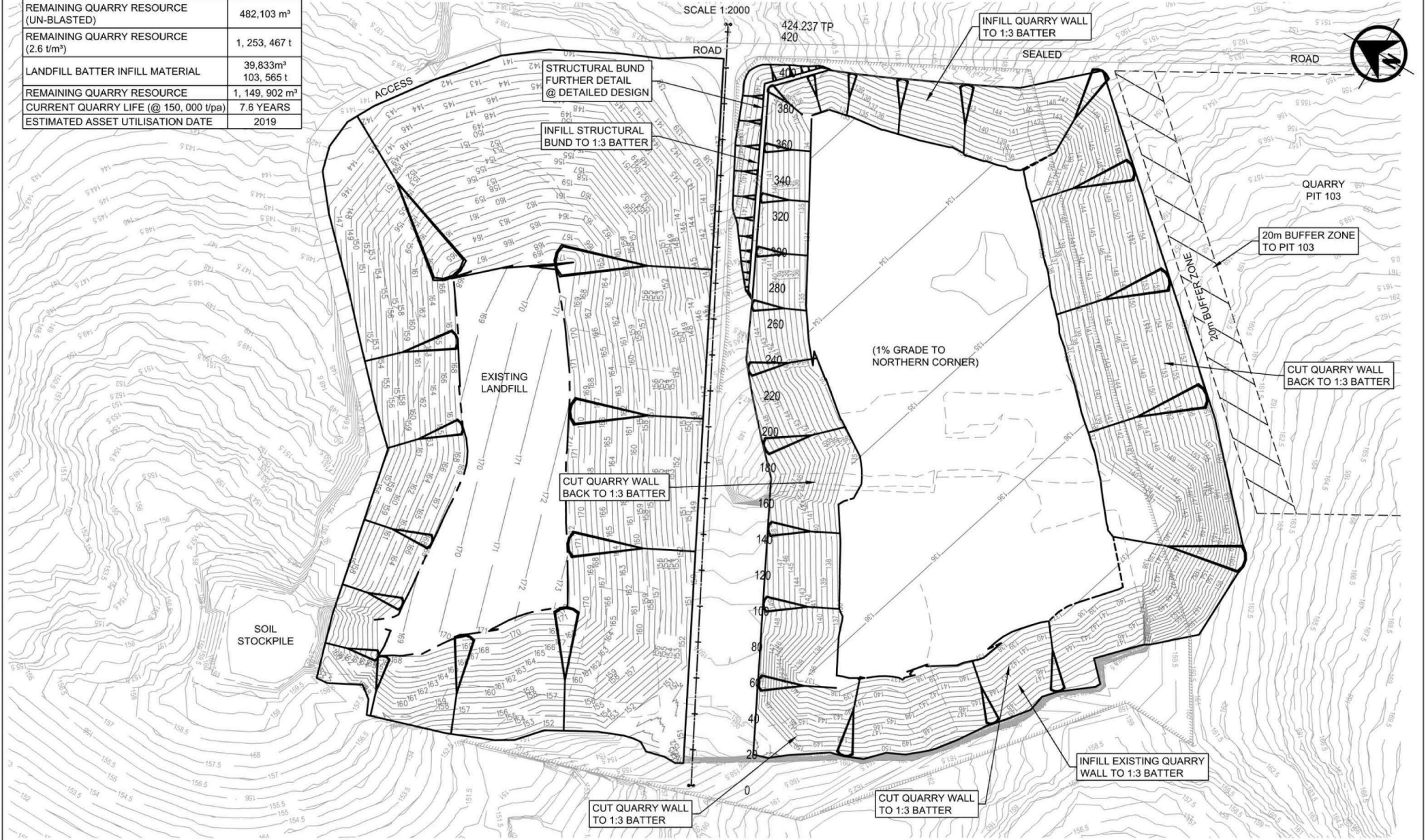
6. In condition 7 of Schedule 3, delete conditions (g) and (h) and insert after the word activities, the following:
 - (g) stockpile green waste on an impermeable pad with bunding to contain leachate; and
 - (h) progressively cap the landfill cells using an EPA endorsed method.
7. In condition 18 of Schedule 3, delete condition (b) and insert instead:
 - (b) ensure that this leachate barrier system complies with specifications in the most current version of the EPL;
8. Insert the following after Appendix 1:

APPENDIX 1A
MODIFICATION 2 – DRAWINGS



CALCULATION SUMMARY	
REMAINING QUARRY RESOURCE (UN-BLASTED)	482,103 m³
REMAINING QUARRY RESOURCE (2.6 t/m³)	1,253,467 t
LANDFILL BATTER INFILL MATERIAL	39,833m³ 103,565 t
REMAINING QUARRY RESOURCE	1,149,902 m³
CURRENT QUARRY LIFE (@ 150,000 t/pa)	7.6 YEARS
ESTIMATED ASSET UTILISATION DATE	2019

FINAL QUARRY LANDFORM FOR CURRENT QUARRY



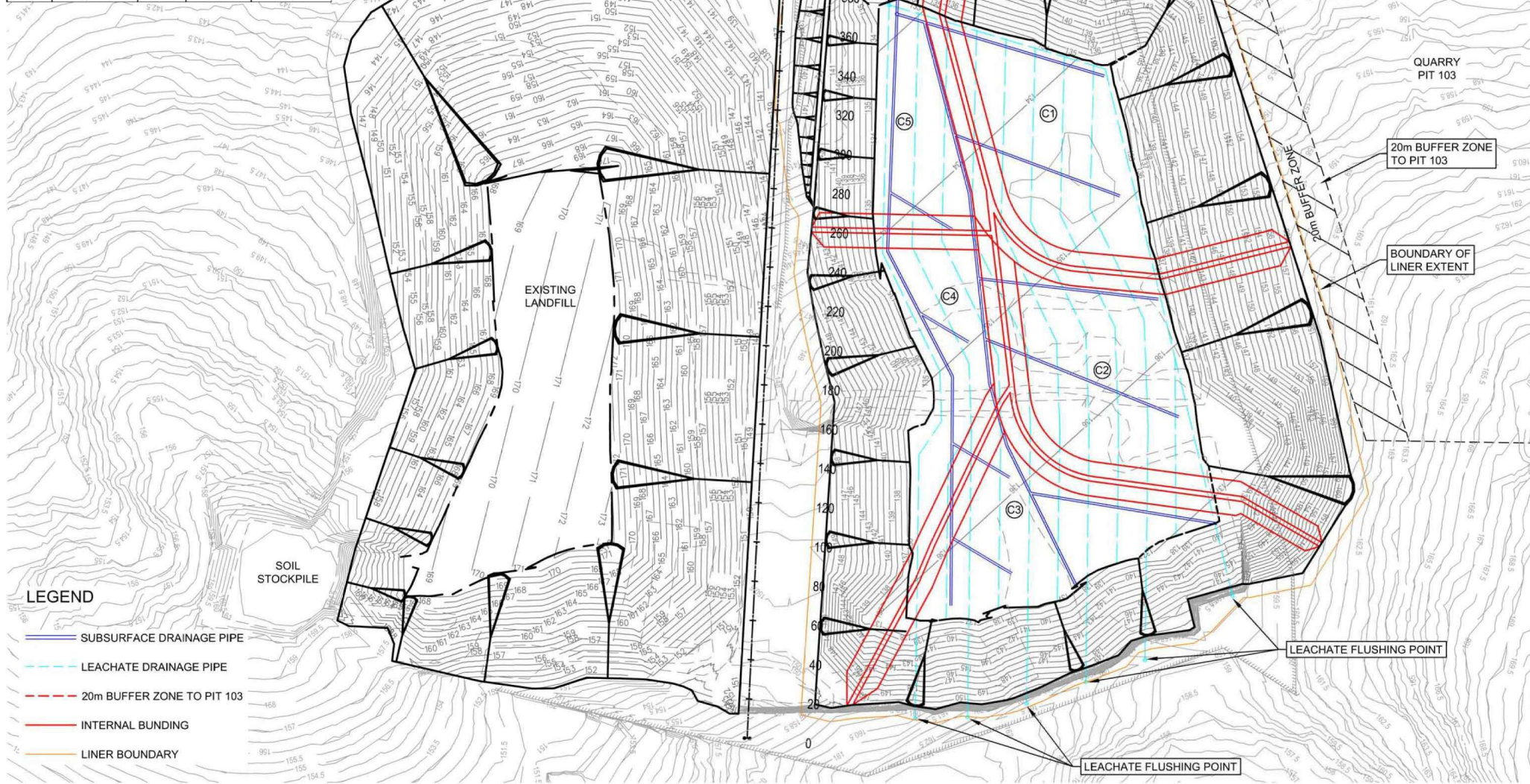
D	ISSUE FOR REVIEW	04.03.2013	SGY	CH	 PO Box 3009 Nowra North NSW 2541 Fax. 02 4446 0511	DRAWN: S.G.Y	SHEET C	SCALE AS NOTED
C	ISSUE FOR REVIEW	21.02.2013	SGY	CH		CHECK: C.H	THARBOGANG LANDFILL PROJECT FINAL QUARRY LANDFORM FOR CURRENT QUARRY	
B	ISSUE FOR REVIEW	18.12.2012	SGY	CH		APPR. P.H		
A	ISSUE FOR REVIEW	11.12.2012	SGY	CH		REV: D		
RevNo	Revision note	Date	Signature	Checked				

NEW LANDFILL CELL FLOOR AND WALL CONCEPT DESIGN

SCALE 1:2000



SUMMARY CALCULATIONS				
	BUND MATERIAL QUANTITY m ³	LINER AREA m ²	LEACHATE PIPE m	SUBSURFACE DRAINAGE PIPE m
C1	3,683.8	18,523	834.8	309.2
C2	3,757.5	19,361	789.9	300.8
C3	2,228.8	20,103	873.4	418.6
C4	1,138.8	22,252	417.9	171.7
C5	—	19,491	287.2	139.1
TOTAL	10,808.9	99,730	3,203.2	1,339.4



D	ISSUE FOR REVIEW	04.03.2013	SGY	CH
C	ISSUE FOR REVIEW	21.02.2013	SGY	CH
B	ISSUE FOR REVIEW	18.12.2012	SGY	CH
A	ISSUE FOR REVIEW	11.12.2012	SGY	CH
RevNo	Revision note	Date	Signature	Checked



PO Box 3009
Nowra North NSW 2541 Fax. 02 4446 0511

DRAWN: S.G.Y.
CHECK: C.H.
APPR. P.H.
REV: D

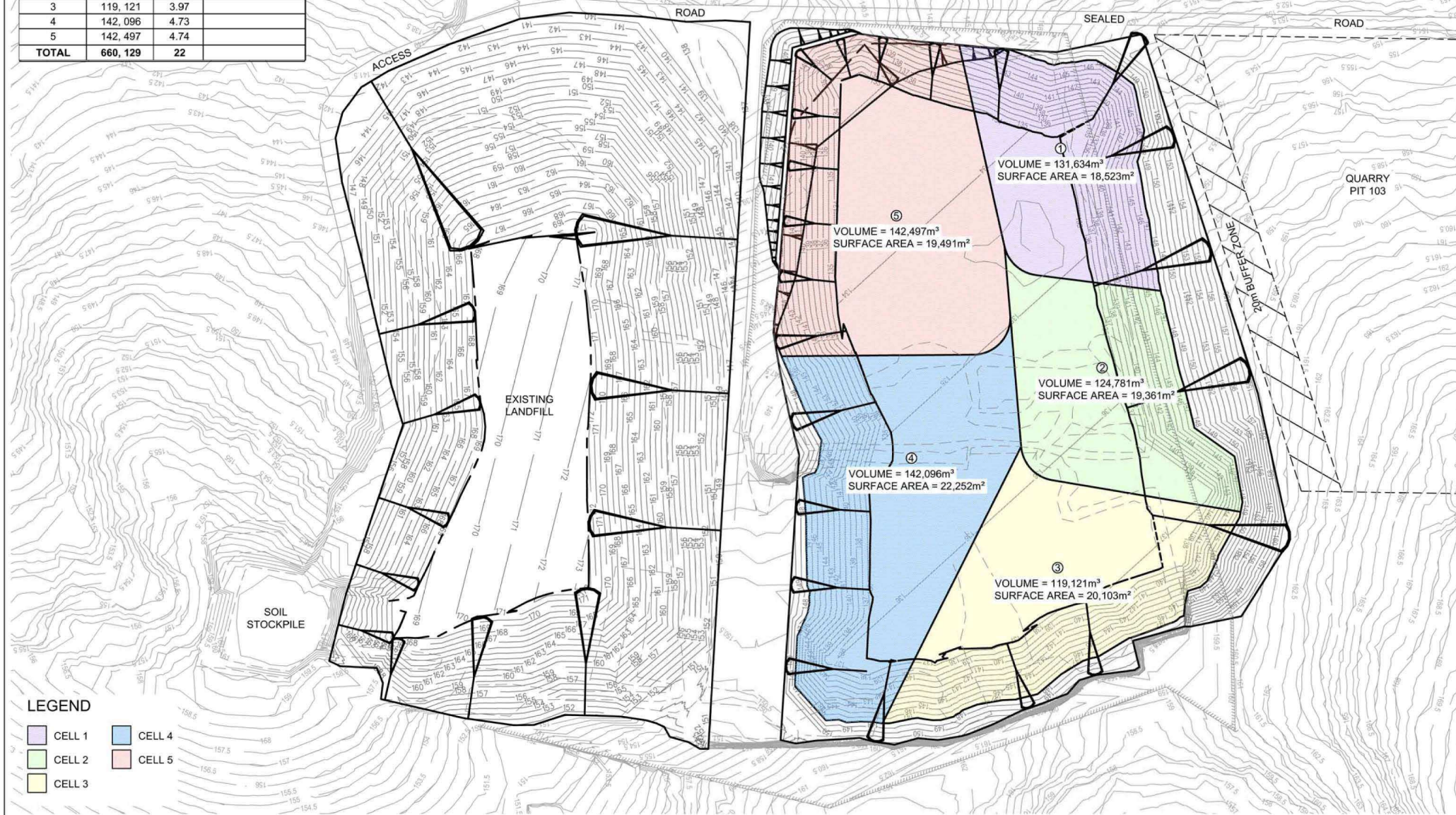
SHEET D1 SCALE AS NOTED
THARBOGANG LANDFILL PROJECT
NEW LANDFILL CELL FLOOR
AND WALL CONCEPT DESIGN

CALCULATION SUMMARY			
CELL	CAPACITY	LIFE YEARS	CAPITAL ESTABLISHMENT COST
1	131,634	4.38	
2	124,781	4.16	
3	119,121	3.97	
4	142,096	4.73	
5	142,497	4.74	
TOTAL	660,129	22	

NEW LANDFILL STAGING PLAN

CELLS 1 - 5

SCALE 1:2000



LEGEND

CELL 1	CELL 4
CELL 2	CELL 5
CELL 3	

D	ISSUE FOR REVIEW	04.03.2013	SGY	CH
C	ISSUE FOR REVIEW	21.02.2013	SGY	CH
B	ISSUE FOR REVIEW	18.12.2012	SGY	CH
A	ISSUE FOR REVIEW	11.12.2012	SGY	CH
RevNo	Revision note	Date	Signature	Checked



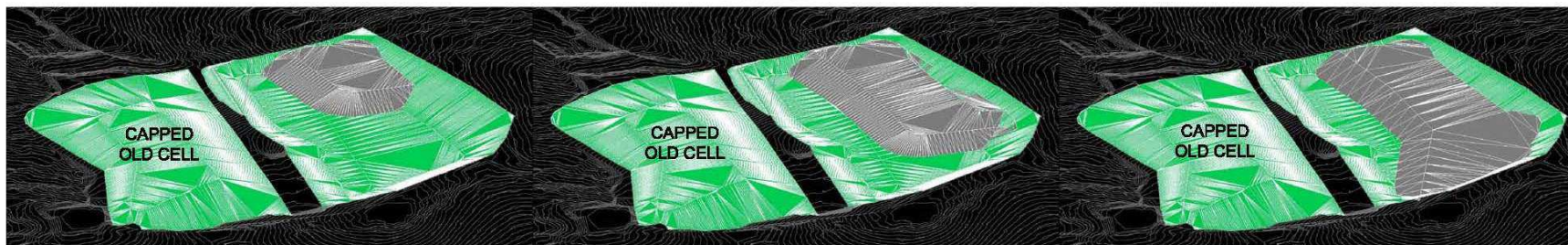
PO Box 3009
Nowra North NSW 2541 Fax. 02 4446 0511

DRAWN: S.G.Y.
CHECK: C.H.
APPR: P.H.
REV: D

SHEET	D2	SCALE	AS NOTED
THARBOGANG LANDFILL PROJECT NEW LANDFILL STAGING PLAN CELLS 1 - 5			

3D NEW LANDFILL STAGING PLAN

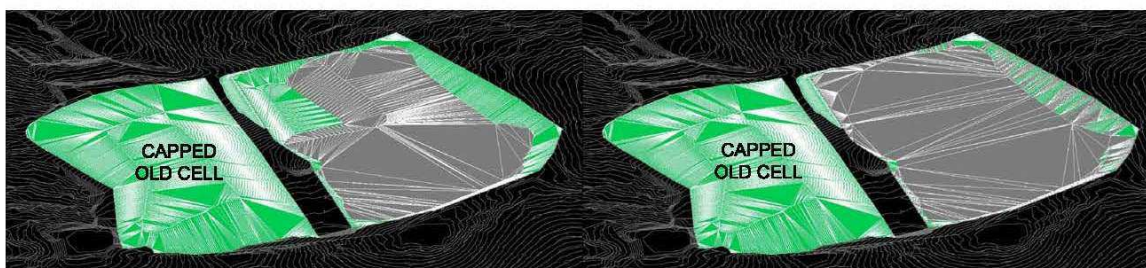
SCALE 1:2000



CELL 1
CAPACITY = 131,634m³
LIFE = 4.38 YEARS
COST =

CELL 2
CAPACITY = 124,781m³
LIFE = 4.16 YEARS
COST =

CELL 3
CAPACITY = 119,121m³
LIFE = 3.97 YEARS
COST =



CELL 4
CAPACITY = 142,096m³
LIFE = 4.73 YEARS
COST =

CELL 5
CAPACITY = 142,497m³
LIFE = 4.74 YEARS
COST =

D	ISSUE FOR REVIEW	04.03.2013	SGY	CH	 PO Box 3009 Nowra North NSW 2541 Fax. 02 4446 0511	DRAWN: S.G.Y	SHEET	SCALE
C	ISSUE FOR REVIEW	21.02.2013	SGY	CH		CHECK: C.H	G1	AS NOTED
B	ISSUE FOR REVIEW	18.12.2012	SGY	CH		APPR. P.H	THARBOGANG LANDFILL PROJECT 3D LANDFILL STAGED DEVELOPMENT SEQUENCE PLANS - SHEET 1	
A	ISSUE FOR REVIEW	11.12.2012	SGY	CH		REV: D		
RevNo	Revision note	Date	Signature	Checked				