

Drawing no. 07002g_CP_01-3

Date 14 November 2008

Source Geoscience Australia
NSW Department of Lands
RLMS Pty Ltd

Datum GDA 94

Legend

- | | |
|----------------------------|---------------------------------|
| ○ Kilometre point | — Principal road |
| ■ Study Area | — Secondary road |
| ✈ Airport/Landing ground | — Minor road |
| ■ Water storage area | - - Minor road (unsealed) |
| ■ Travelling stock reserve | --- Railway |
| --- State border | — Major river (perennial) |
| | - - Minor river (non-perennial) |

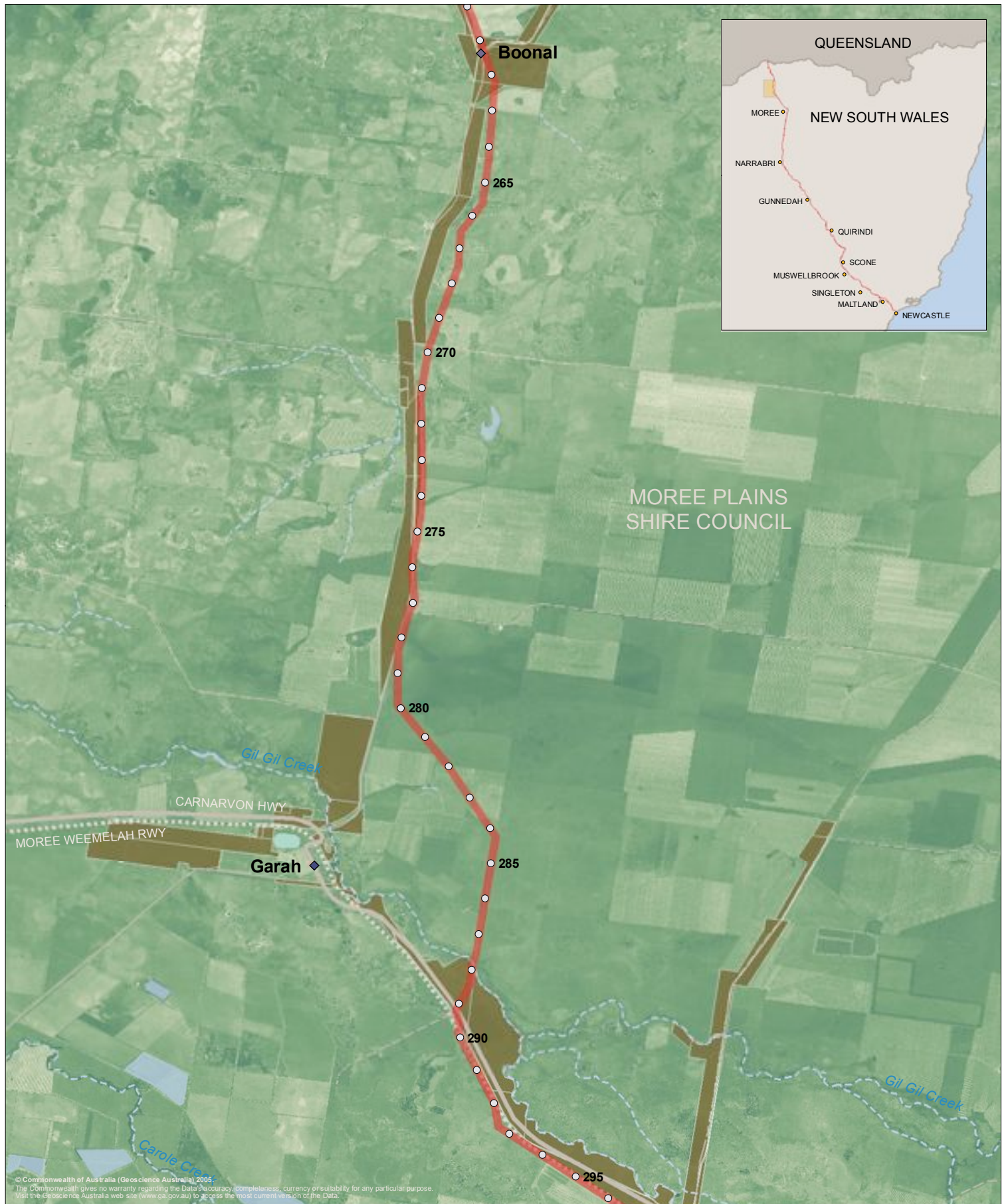
 **Queensland Hunter
Gas Pipeline**

Figure 5.1 200m wide Study Area - Boomi area (KP 222-261)

1:140,000 (at A4)

0 1 2 3 4km





Drawing no. 07002g_CP_02-3

Date 14 November 2008

Source Geoscience Australia
NSW Department of Lands
RLMS Pty Ltd

Datum GDA 94

Legend

- Kilometre point
- Study Area
- Recreation area
- Water storage area
- Travelling stock reserve
- Principal road
- Secondary road
- Minor road
- - Minor road (unsealed)
- Railway
- Major river (perennial)
- - Minor river (non-perennial)

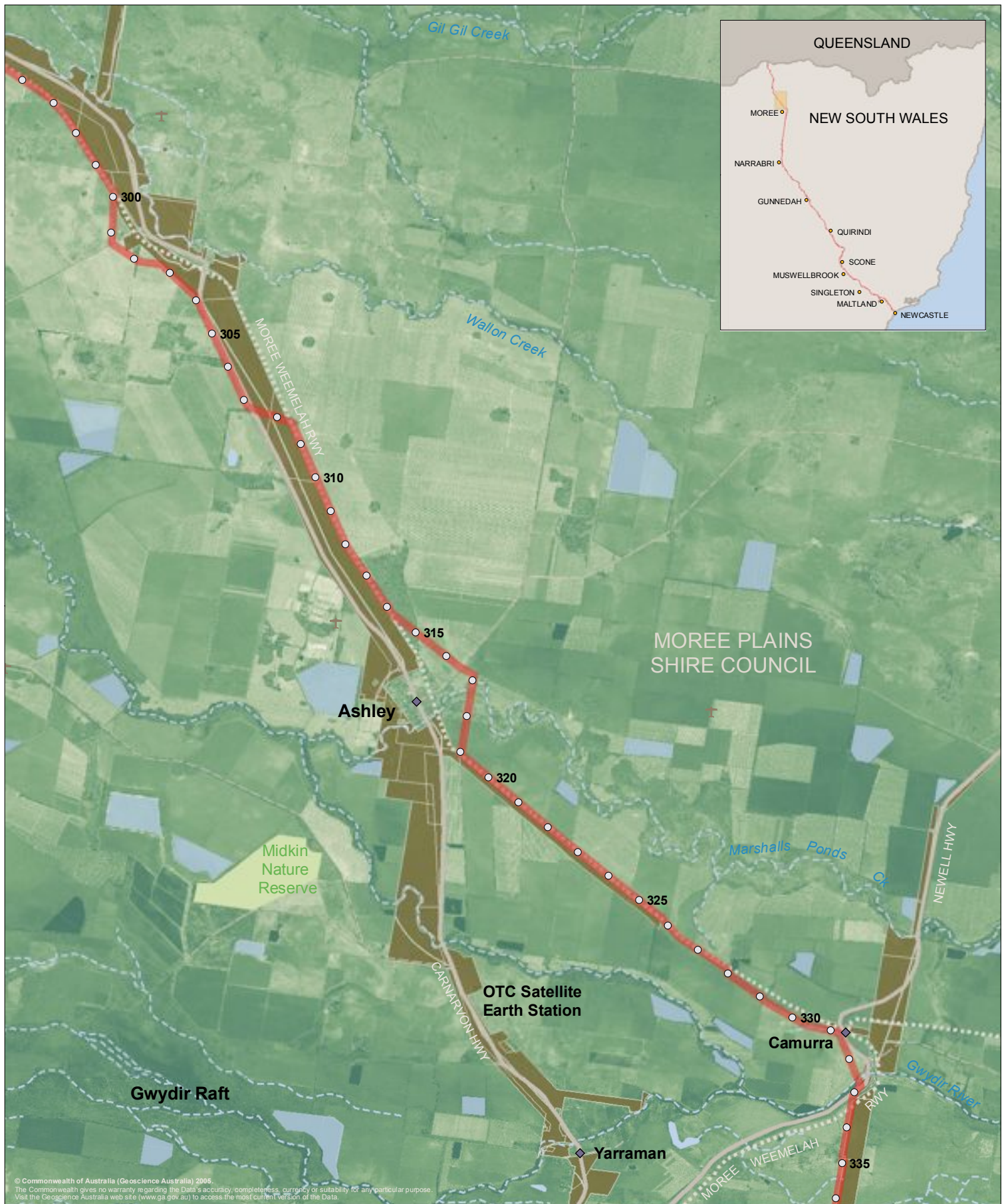
 **Queensland Hunter Gas Pipeline**

Figure 5.2 200m wide Study Area - Garah area (KP 263-296)

1:140,000 (at A4)

0 1 2 3 4km





Drawing no. 07002g_CP_03-3

Date 14 November 2008

Source Geoscience Australia
NSW Department of Lands
RLMS Pty Ltd

Datum GDA 94

Legend

- Kilometre point
- Study Area
- Airport/Landing ground
- NSW estate
- Water storage area
- Travelling stock reserve
- Principal road
- Secondary road
- Minor road
- Minor road (unsealed)
- Railway
- Major river (perennial)
- Minor river (non-perennial)

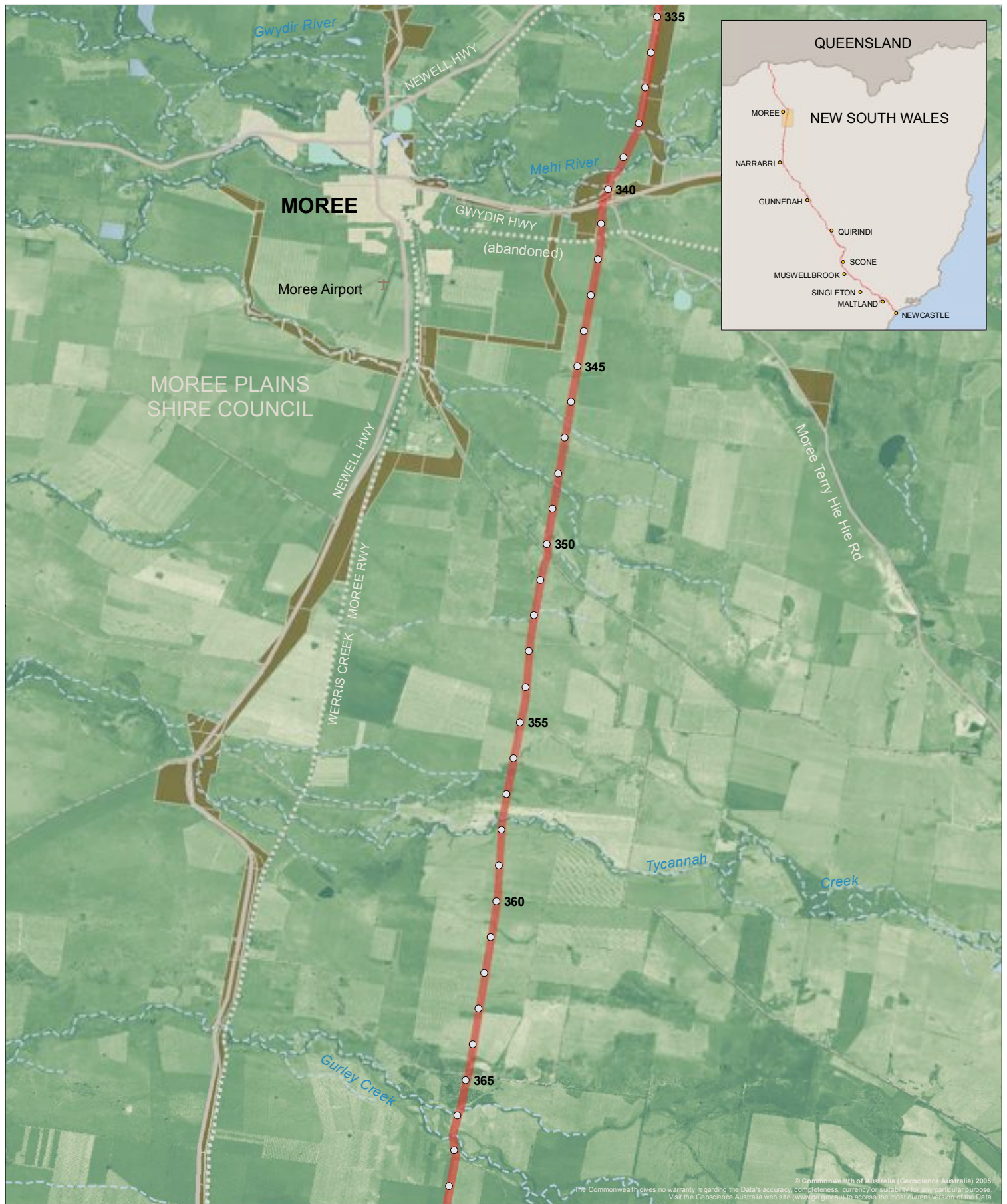
 **Queensland Hunter Gas Pipeline**

Figure 5.3 200m wide Study Area - Ashley area (KP 296-336)

1:140,000 (at A4)

0 1 2 3 4km





Drawing no. 07002g_CP_04-3

Date 14 November 2008

Source Geoscience Australia
NSW Department of Lands
RLMS Pty Ltd

Datum GDA 94

Legend

- | | |
|----------------------------|---------------------------------|
| ○ Kilometre point | — Principal road |
| ■ Study Area | — Secondary road |
| ✈ Airport/Landing ground | — Minor road |
| ■ Recreation area | - - Minor road (unsealed) |
| ■ Water storage area | ■ Railway |
| ■ Built up area | — Major river (perennial) |
| ■ Travelling stock reserve | - - Minor river (non-perennial) |

 **Queensland Hunter
Gas Pipeline**

Figure 5.4 200m wide Study Area - Moree area (KP 335-369)

1:140,000 (at A4)

0 1 2 3 4km





Drawing no. 07002g_CP_05-3

Date 14 November 2008

Source Geoscience Australia
NSW Department of Lands
RLMS Pty Ltd

Datum GDA 94

Legend

- Kilometre point
- Study Area
- ✈ Airport/Landing ground
- Recreation area
- Travelling stock reserve
- LGA boundary
- Principal road
- Secondary rRoad
- Minor road
- - - Minor road (unsealed)
- Railway
- Major river (perennial)
- - - Minor river (non-perennial)

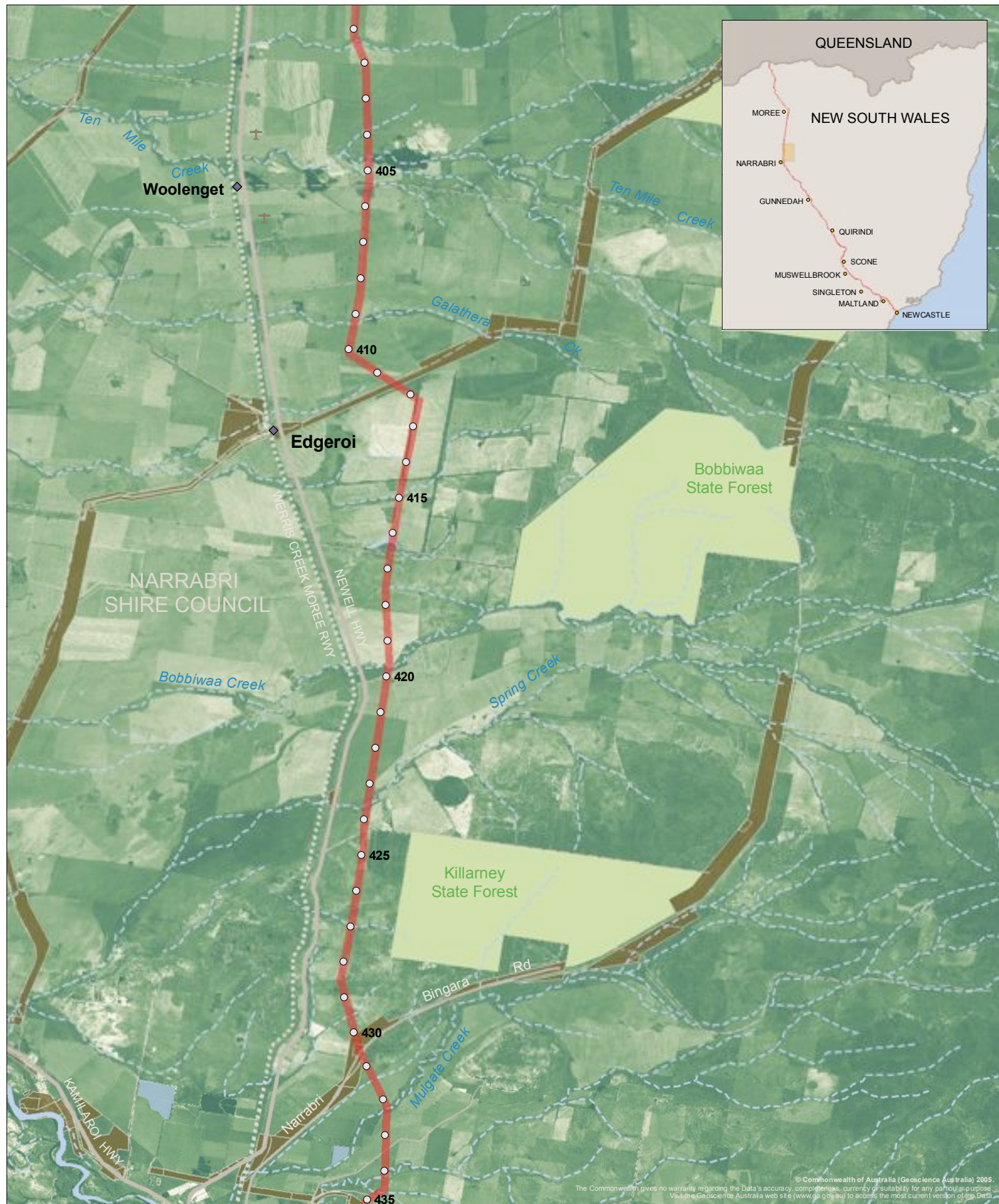
 **Queensland Hunter Gas Pipeline**

Figure 5.5 200m wide Study Area - Bellata area (KP 369-401)

1:140,000 (at A4)

0 1 2 3 4km





Drawing no. 07002g_CP_06-3

Date 14 November 2008

Source Geoscience Australia
NSW Department of Lands
RLMS Pty Ltd

Datum GDA 94

Legend

- | | |
|----------------------------|---------------------------------|
| ○ Kilometre point | — Principal road |
| ■ Study Area | — Secondary road |
| ✈ Airport/Landing ground | — Minor road |
| ■ NSW estate | - - Minor road (unsealed) |
| ■ Water storage area | ■ Railway |
| ■ Travelling stock reserve | — Major river (perennial) |
| | - - Minor river (non-perennial) |

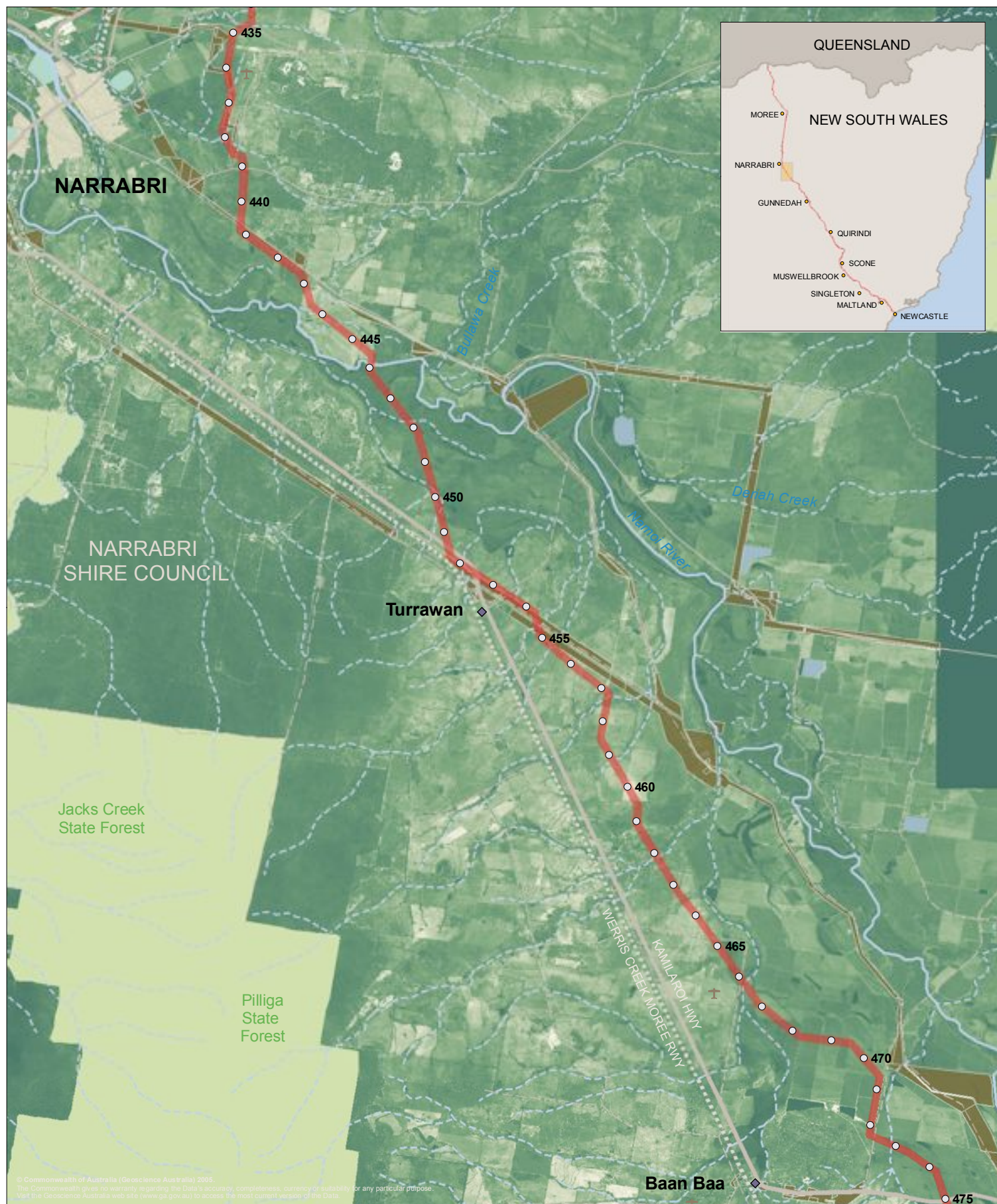
 **Queensland Hunter Gas Pipeline**

Figure 5.6 200m wide Study Area - Narrabri north area (KP 401-435)

1:140,000 (at A4)

0 1 2 3 4km





Drawing no. 07002g_CP_07-3

Date 14 November 2008

Source Geoscience Australia
NSW Department of Lands
RLMS Pty Ltd

Datum GDA 94

Legend

- | | | |
|--------------------------|----------------------------|---------------------------------|
| ○ Kilometre point | ■ Built up area | — Principal road |
| ■ Study Area | ■ Travelling stock reserve | — Secondary road |
| ✈ Airport/Landing ground | | — Minor road |
| ■ NSW estate | | --- Minor road (unsealed) |
| ■ Recreation area | | --- Railway |
| ■ Water storage areas | | — Major river (perennial) |
| | | --- Minor river (non-perennial) |

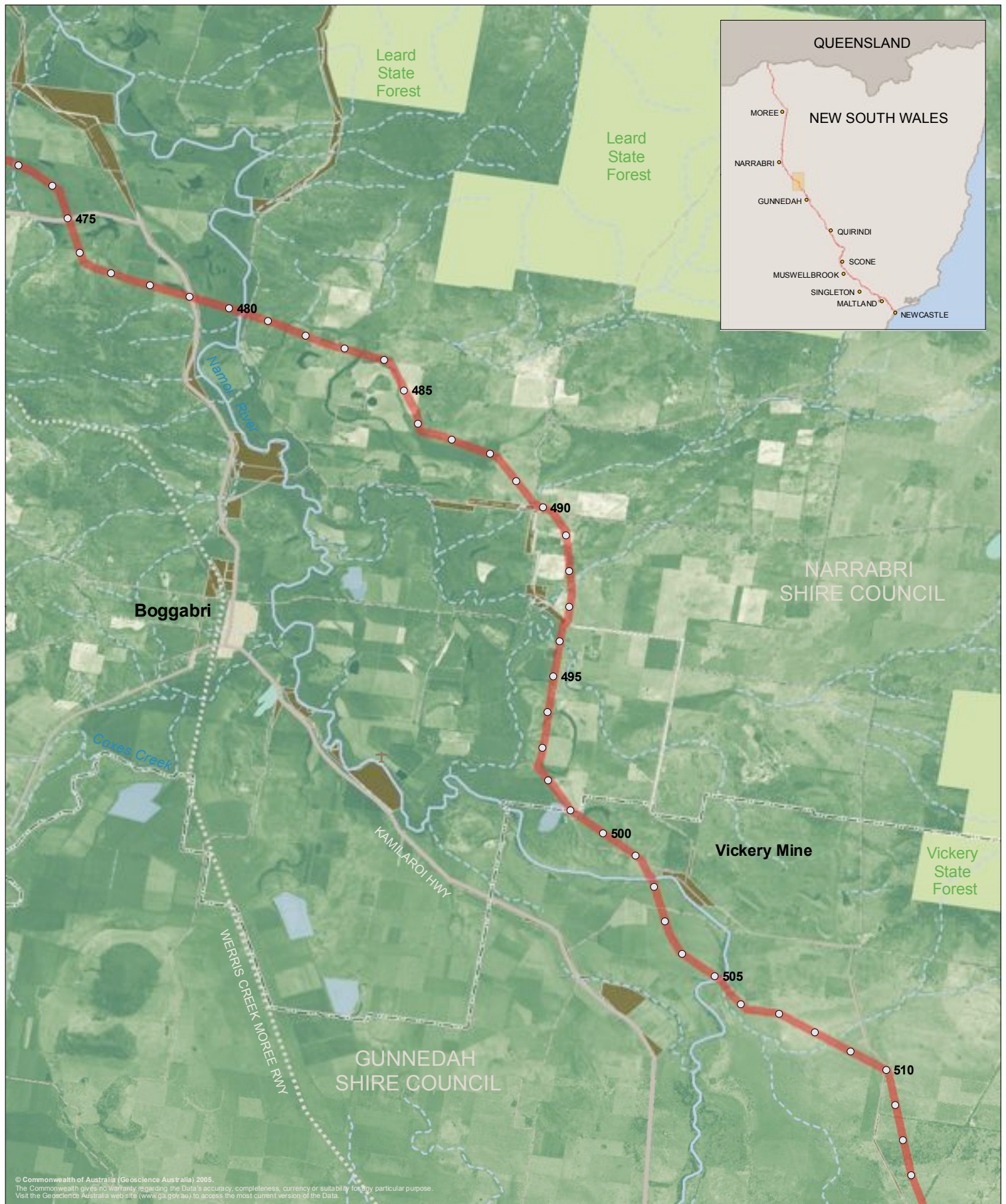
 **Queensland Hunter Gas Pipeline**

Figure 5.7 200m wide Study Area - Narrabri area (KP 435-475)

1:140,000 (at A4)

0 1 2 3 4km





Drawing no. 07002g_CP_08-3

Date 14 November 2008

Source Geoscience Australia
NSW Department of Lands
RLMS Pty Ltd

Datum GDA 94

Legend

- | | | |
|--------------------------|----------------------------|-------------------------------|
| ○ Kilometre point | ■ Travelling stock reserve | — Principal road |
| ■ Study Area | □ LGA boundary | — Secondary road |
| ✈ Airport/Landing ground | | — Minor road |
| ■ NSW estate | | — Minor road (unsealed) |
| ■ Recreation area | | — Railway |
| ■ Water storage area | | — Major river (perennial) |
| ■ Built up area | | — Minor river (non-perennial) |

 **Queensland Hunter Gas Pipeline**

Figure 5.8 200m wide Study Area - Boggabri area (KP 473-513)

1:140,000 (at A4)

0 1 2 3 4km





Drawing no. 07002g_CP_09-3

Date 14 November 2008

Source Geoscience Australia
NSW Department of Lands
RLMS Pty Ltd

Datum GDA 94

Legend

- | | |
|------------------------------|-----------------------------------|
| ○ Kilometre point | — Principal road |
| ■ Proposed pipeline corridor | — Secondary road |
| ✈ Airport/Landing ground | — Minor road |
| ■ Recreation area | - - Minor road (unsealed) |
| ■ Water storage area | - - - Railway |
| ■ Built up area | — Major river (perennial) |
| ■ Travelling stock reserve | - - - Minor river (non-perennial) |

 **Queensland Hunter
Gas Pipeline**

88-888

1:140,000 (at A4)

0 1 2 3 4km



Figure 5.9 200m wide Study Area: Gunnedah area (KP 513-552)



Drawing no. 07002g_CP_10-3

Date 14 November 2008

Source Geoscience Australia
NSW Department of Lands
RLMS Pty Ltd

Datum GDA 94

Legend

- | | |
|----------------------------|---------------------------------|
| ○ Kilometre point | — Principal road |
| ■ Study Area | — Secondary road |
| ■ NSW estate | — Minor road |
| ■ Water storage area | - - Minor road (unsealed) |
| ■ Travelling stock reserve | — Railway |
| □ LGA boundary | — Major river (perennial) |
| | - - Minor river (non-perennial) |

 **Queensland Hunter Gas Pipeline**

Figure 5.10 200m wide Study Area - Breeza area (KP 551-591)

1:140,000 (at A4)

0 1 2 3 4km





Drawing no. 07002g_CP_11-3

Date 14 November 2008

Source Geoscience Australia
 NSW Department of Lands
 RLMS Pty Ltd

Datum GDA 94

Legend

- | | |
|----------------------------|-------------------------------|
| ○ Kilometre point | — Principal road |
| ■ Study Area | — Secondary road |
| ■ Recreation area | — Minor road |
| ■ Water storage area | — Minor road (unsealed) |
| ■ Built up area | — Railway |
| ■ Travelling stock reserve | — Major river (perennial) |
| | — Minor river (non-perennial) |

Queensland Hunter Gas Pipeline

Figure 5.11 200m wide Study Area - Quirindi area (KP 591-634)

1:140,000 (at A4)

0 1 2 3 4km





Drawing no. 07002g_CP_12-3

Date 14 November 2008

Source Geoscience Australia
NSW Department of Lands
RLMS Pty Ltd

Datum GDA 94

Legend

- | | |
|----------------------------|-------------------------------|
| ○ QHGP_MainLine_RevL_KPs | Principal road |
| ■ Study Area | Secondary road |
| ✈ Airport/Landing ground | Minor road |
| ■ NSW estate | Minor road (unsealed) |
| ■ Built up area | ■ Railway |
| ■ Travelling stock reserve | — Major river (perennial) |
| □ LGA boundary | — Minor river (non-perennial) |

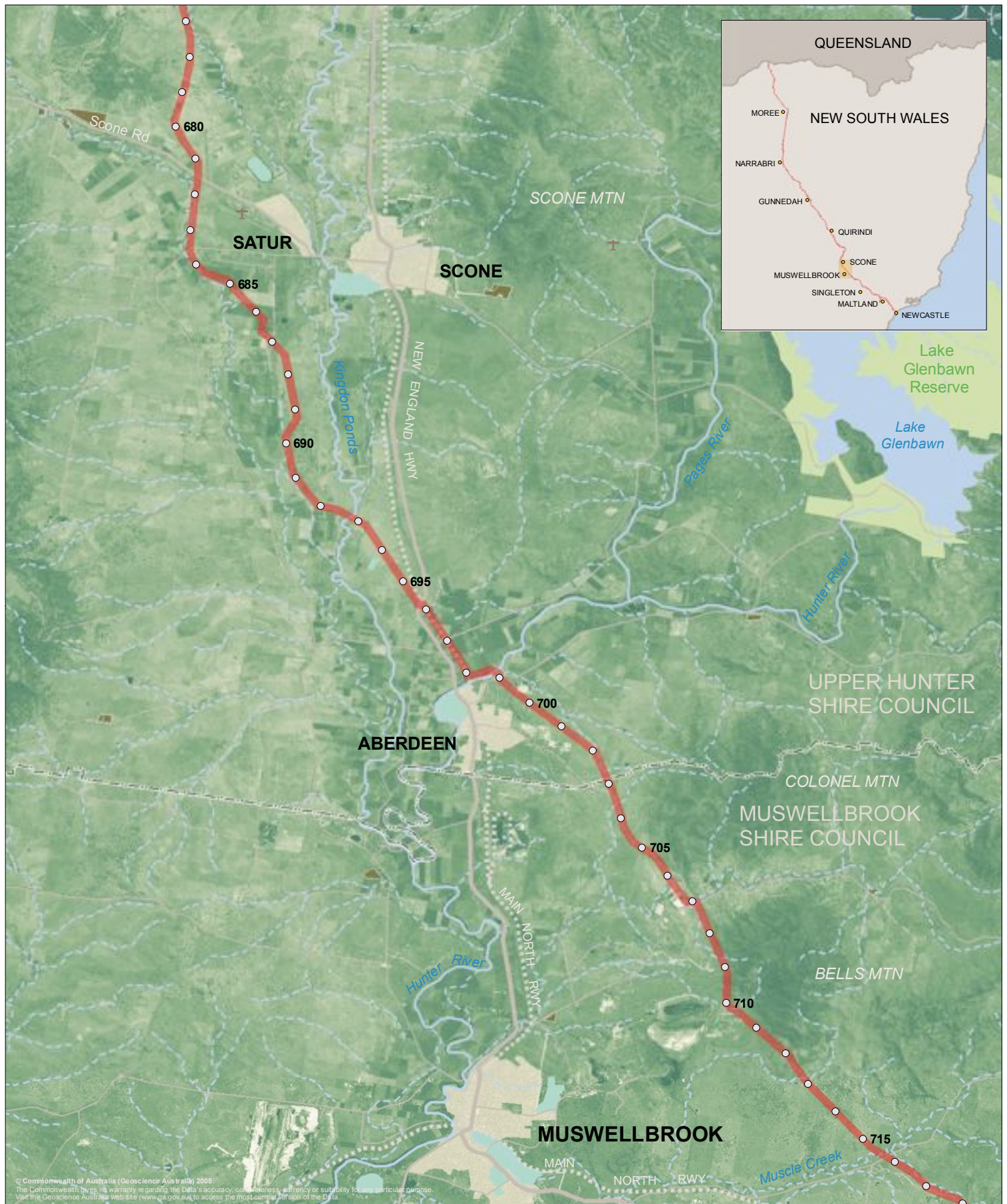
 **Queensland Hunter Gas Pipeline**

Figure 5.12 200m wide Study Area - Murrurundi area (KP 633-678)

1:140,000 (at A4)

0 1 2 3 4km





Drawing no. 07002g_CP_13-3

Date 14 November 2008

Source Geoscience Australia
NSW Department of Lands
RLMS Pty Ltd

Datum GDA 94

Legend

- | | | |
|--------------------------|----------------------------|-------------------------------|
| ○ Kilometre point | ■ Travelling stock reserve | — Principal road |
| ■ Study Area | □ LGA boundary | — Secondary road |
| ✈ Airport/Landing ground | | — Minor road |
| ■ NSW estate | | — Minor road (unsealed) |
| ■ Recreation area | | — Railway |
| ■ Water storage area | | — Major river (perennial) |
| ■ Built up area | | — Minor river (non-perennial) |

 **Queensland Hunter
Gas Pipeline**

Figure 5.13 200m wide Study Area: Muswellbrook area (KP 677-718)

1:140,000 (at A4)

0 1 2 3 4km





Drawing no. 07002g_CP_14-3

Date 14 November 2008

Source Geoscience Australia
NSW Department of Lands
RLMS Pty Ltd

Datum GDA 94

Legend

- | | |
|----------------------------|---------------------------------|
| ○ Kilometre point | — Principal road |
| ■ Study Area | — Secondary road |
| ✈ Airport/Landing ground | — Minor road |
| ■ NSW estate | - - Minor road (unsealed) |
| ■ Water storage area | ... Railway |
| ■ Travelling stock reserve | — Major river (perennial) |
| □ LGA boundary | - - Minor river (non-perennial) |

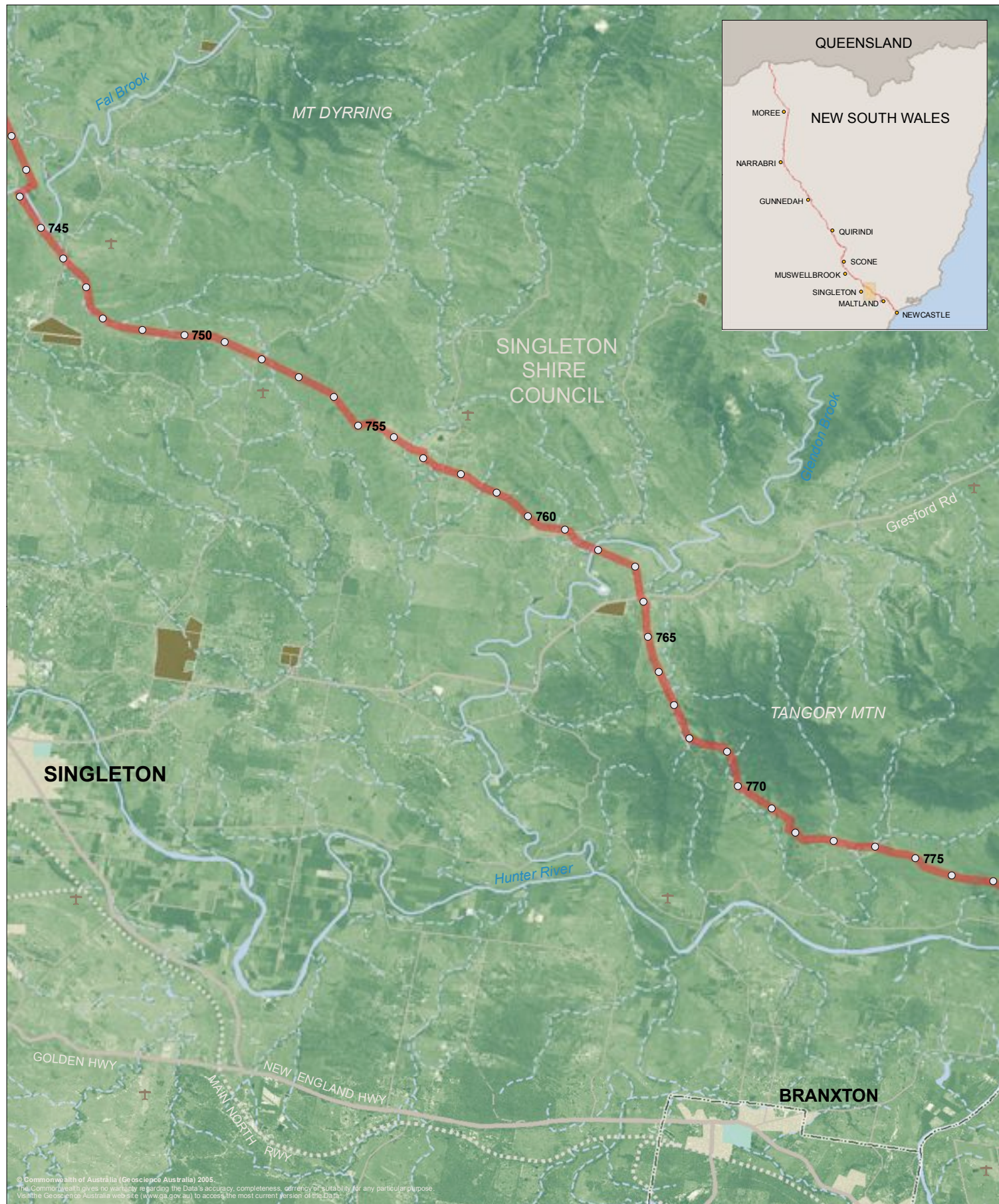
 **Queensland Hunter
Gas Pipeline**

Figure 5.14 200m wide Study Area - Singleton north area (KP 714-750)

1:140,000 (at A4)

0 1 2 3 4km





Drawing no. 07002g_CP_15-3

Date 14 November 2008

Source Geoscience Australia
NSW Department of Lands
RLMS Pty Ltd

Datum GDA 94

Legend

- | | |
|----------------------------|---------------------------------|
| ○ Kilometre point | — Principal road |
| ■ Study Area | — Secondary road |
| ✈ Airport/Landing ground | — Minor road |
| ■ Recreation area | - - Minor road (unsealed) |
| ■ Built up area | — Major river (perennial) |
| ■ Travelling stock reserve | - - Minor river (non-perennial) |
| ■ LGA boundary | ■ Railway |

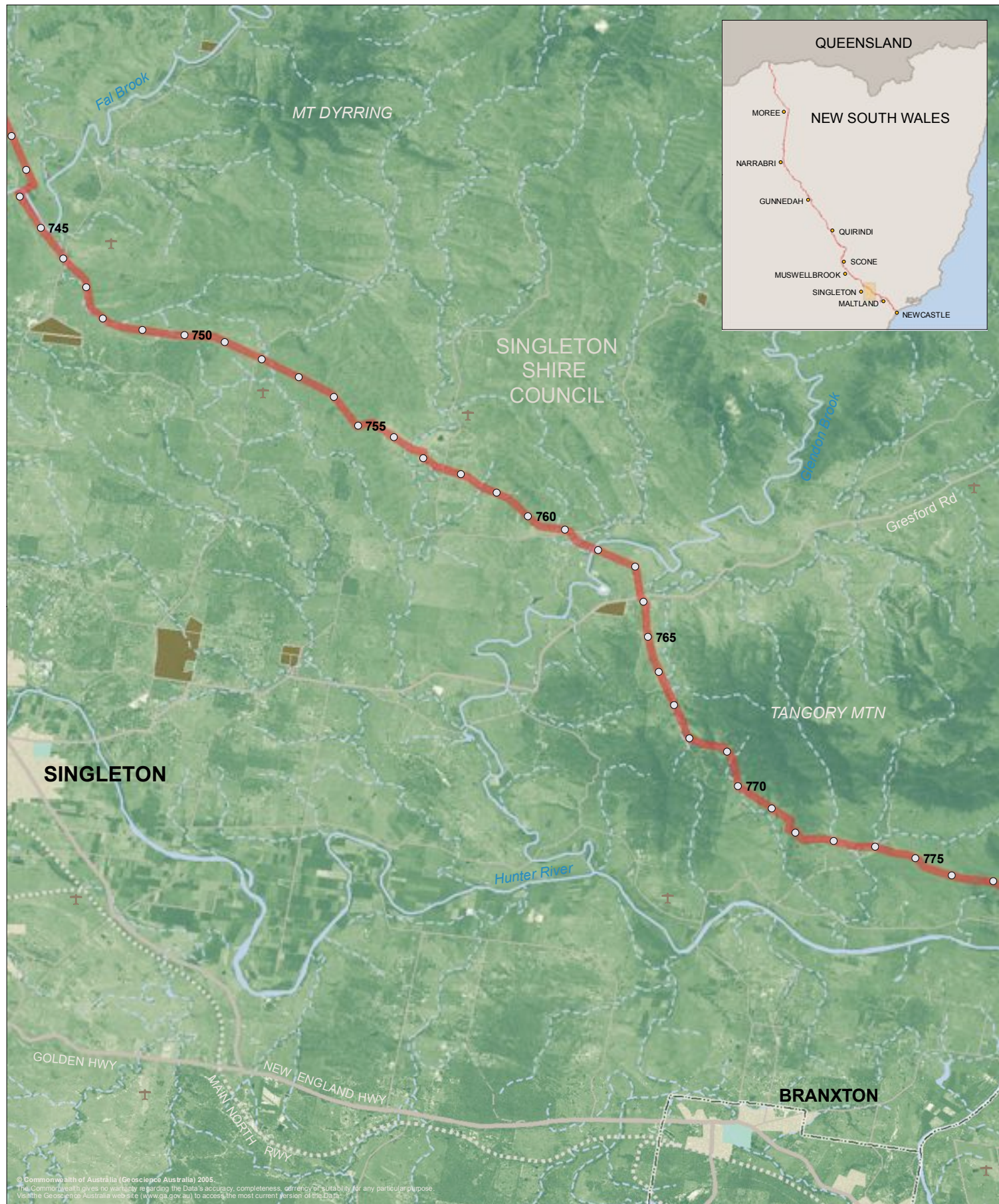
 **Queensland Hunter Gas Pipeline**

Figure 5.15 200m wide Study Area - Singleton east area (KP 742-777)

1:140,000 (at A4)

0 1 2 3 4km





Drawing no. 07002g_CP_15-3

Date 14 November 2008

Source Geoscience Australia
NSW Department of Lands
RLMS Pty Ltd

Datum GDA 94

Legend

- | | |
|----------------------------|-----------------------------|
| ○ Kilometre point | Principal road |
| ■ Study Area | Secondary road |
| ✈ Airport/Landing ground | Minor road |
| ■ Recreation area | Minor road (unsealed) |
| ■ Built up area | Major river (perennial) |
| ■ Travelling stock reserve | Minor river (non-perennial) |
| ■ LGA boundary | ■ Railway |

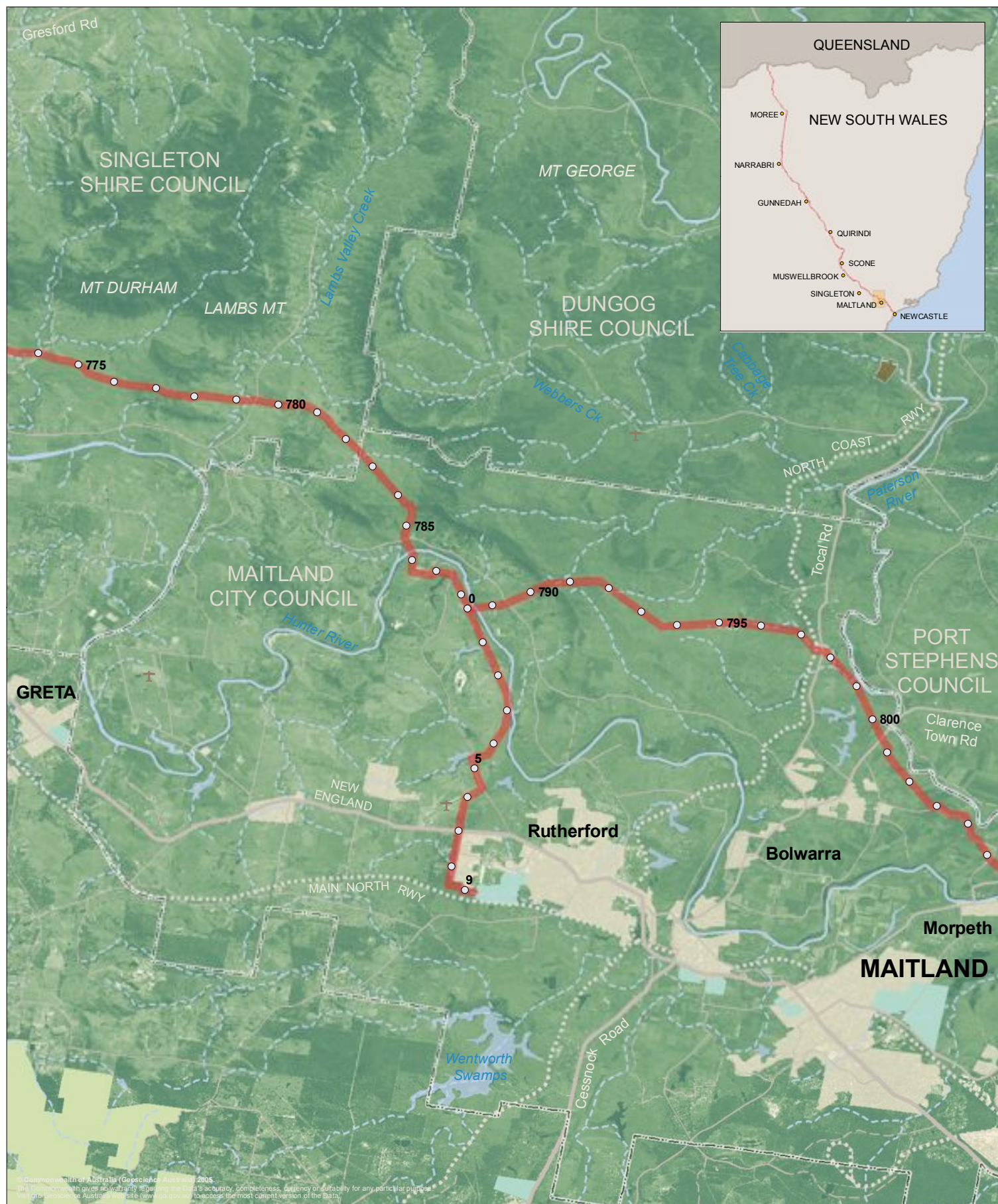
 **Queensland Hunter Gas Pipeline**

Figure 5.15 200m wide Study Area - Singleton east area (KP 742-770)

1:140,000 (at A4)

0 1 2 3 4km





Drawing no. 07002g_CP_16-3

Date 14 November 2008

Source Geoscience Australia
NSW Department of Lands
RLMS Pty Ltd

Datum GDA 94

Queensland Hunter Gas Pipeline

1:140,000 (at A4)

0 1 2 3 4km



