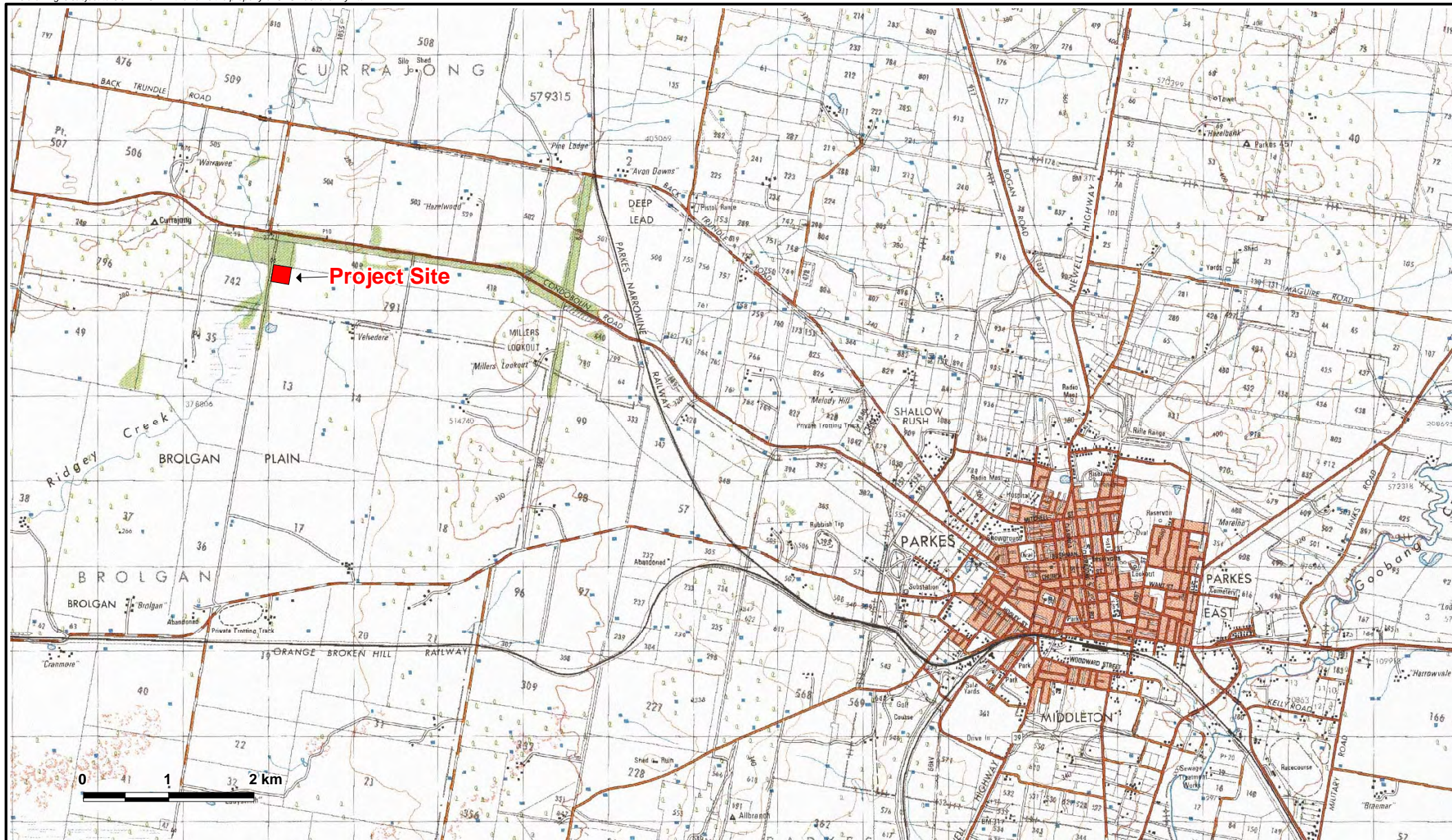



## Figures







0 1 2 km

Client INTERNATIONAL POWER (AUSTRALIA) PTY LTD	Project ENVIRONMENTAL ASSESSMENT - PARKES PEAKING POWER PLANT	Title SITE LOCATION						
	<table border="1"> <tr> <td>Drawn: AJW</td><td>Approved: CJ</td><td>Date: 18/12/2006</td></tr> <tr> <td>Job No: 43177456</td><td colspan="2">File No: 43177456.013.wor</td></tr> </table>	Drawn: AJW	Approved: CJ	Date: 18/12/2006	Job No: 43177456	File No: 43177456.013.wor		Figure: 1
Drawn: AJW	Approved: CJ	Date: 18/12/2006						
Job No: 43177456	File No: 43177456.013.wor							







 Source:	Client INTERNATIONAL POWER (AUSTRALIA) PTY LTD		Project ENVIRONMENTAL ASSESSMENT - PARKES PEAKING POWER PLANT		Title <b>INDICATIVE SITE LAYOUT</b>
			Drawn: AJW	Approved: CJ	Date: 18/12/2006
			Job No: <b>43177456</b>	File No: 43177456.027.wor	

Figure: **2a**







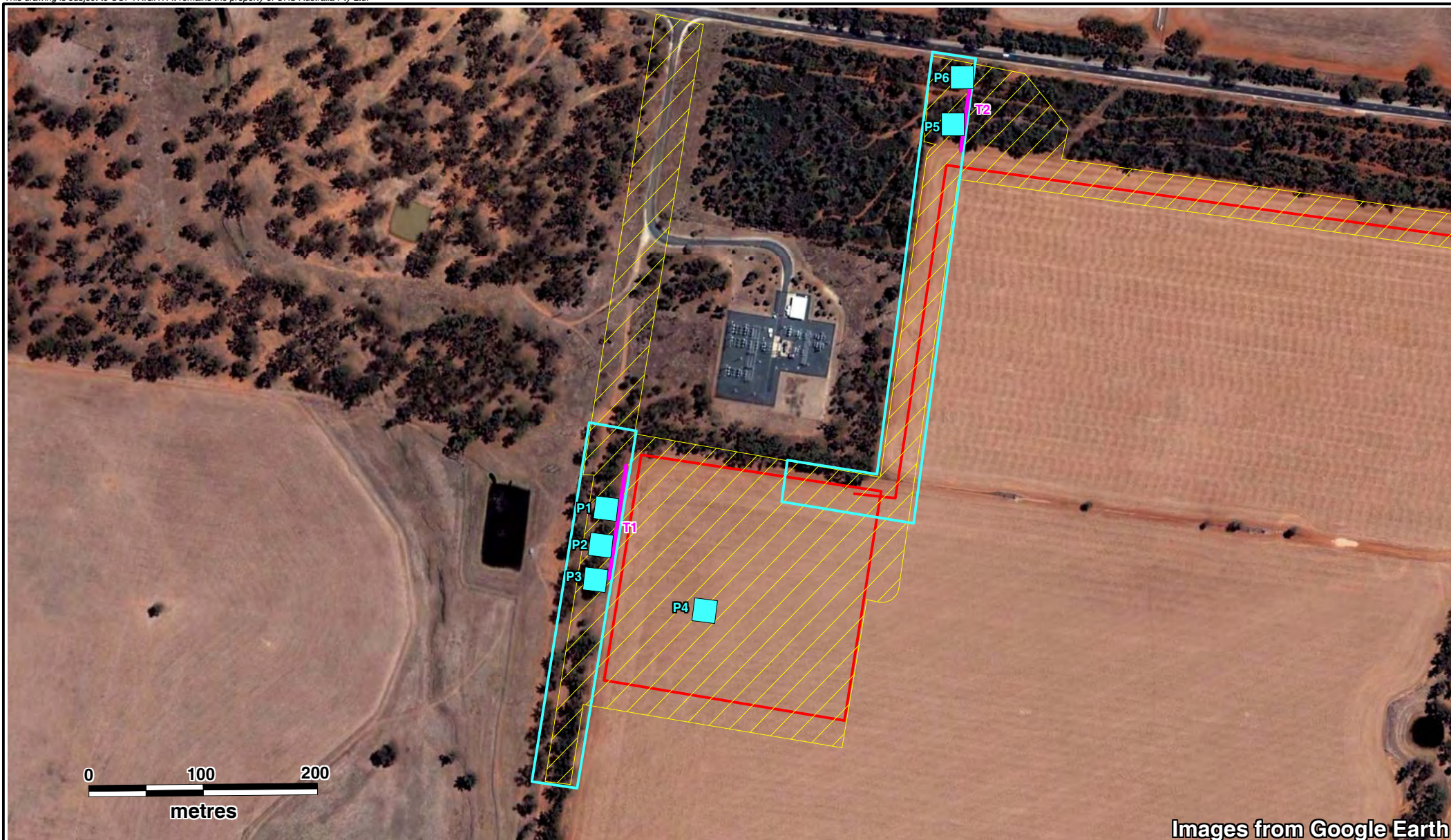
<div><div><div><div></div><div></div></div><div><div></div><div></div></div><div><div></div><div></div></div><div><div></div><div></div></div></div><div><div>Legend</div><div><div><div></div></div>Proposed Gas Pipeline Route</div><div><div><div></div></div>Alternative Section 1</div><div><div><div></div></div>Existing Gas Pipeline</div><div><div><div></div></div>Gas Pipeline Take-off Point</div></div><div>Source: Map compiled using Cadastral Plus, 2004 MapInfo Australain Pty Ltd and PSMA Australia Ltd.</div></div>	<div>Client</div> <div>INTERNATIONAL POWER (AUSTRALIA) PTY LTD</div>	<div>Project</div> <div>ENVIRONMENTAL ASSESSMENT - PARKES PEAKING POWER PLANT</div>			<div>Title</div> <div>GAS PIPELINE ROUTE AND ALTERNATIVE SECTION 1</div>
	<div>URS</div>	<div>Drawn: AJW</div> <div>Approved: CJ</div> <div>Date: 26/06/2007</div>			<div>Figure: 2b</div>
		<div>Job No: 43177456</div> <div>File No: 43177456.014.wor</div>			





 <div>Proposed Gas Pipeline Route</div> <div>Alternative Section 1</div>	Client INTERNATIONAL POWER (AUSTRALIA) PTY LTD		Project ENVIRONMENTAL ASSESSMENT - PARKES PEAKING POWER PLANT		Title <b>ROAD RESERVE AND ALTERNATIVE SECTION 1</b>
			Drawn: AJW    Approved: CJ    Date: 26/06/2007		Figure: <b>2c</b>
			Job No: <b>43177456</b> File No: 43177456.043.wor		
Source: Map compiled using Cadastral Plus, 2004 MapInfo Australain Pty Ltd and PSMA Australia Ltd.					





<p><b>Legend</b></p> <p>  Proposed Gas Pipeline Route          Diurnal Bird Survey Area       </p> <p>  100m Vegetation Transect       </p> <p>  20m x 20m Vegetation Survey Plot       </p> <p>  Random Meander       </p>		<p>Client</p> <p>INTERNATIONAL POWER (AUSTRALIA) PTY LTD</p> <p><b>URS</b></p>		<p>Project</p> <p>ENVIRONMENTAL ASSESSMENT - PARKES PEAKING POWER PLANT</p> <p>           Drawn: AJW    Approved: CJ    Date: 18/12/2006         </p> <p>           Job No: <b>43177456</b>    File No: 43177456.019.wor         </p>		<p>Title</p> <p><b>PLANT SITE SURVEY LOCATIONS</b></p> <p>Figure: <b>3a</b></p>
---	--	--	--	---	--	---





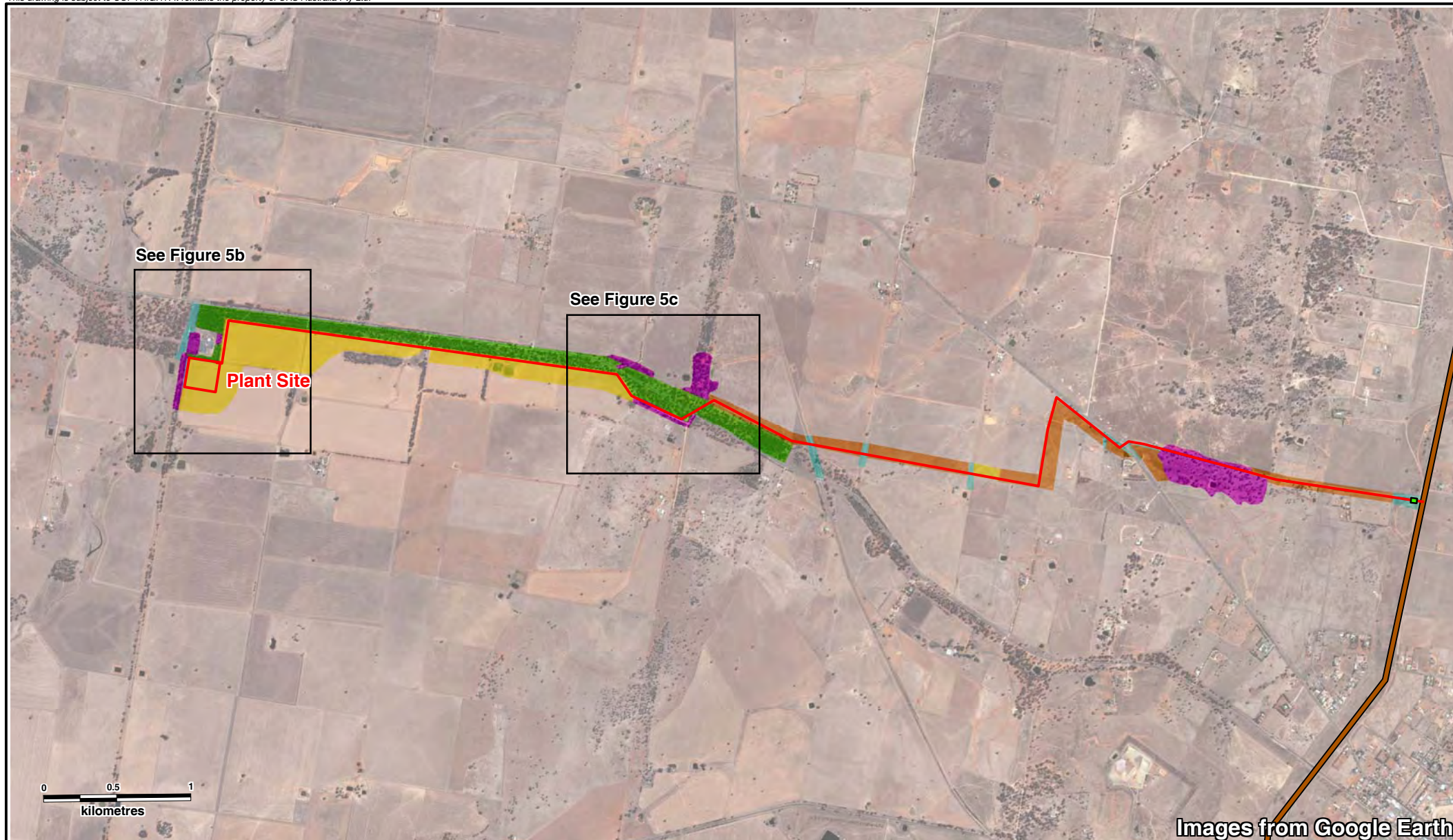
<b>Legend</b> Proposed Gas Pipeline Route Existing Gas Pipeline Random Meander Gas Pipeline Take-off Point Diurnal Bird Survey Area 20m x 20m Vegetation Survey Plot		Client INTERNATIONAL POWER (AUSTRALIA) PTY LTD 	Project ENVIRONMENTAL ASSESSMENT - PARKES PEAKING POWER PLANT Drawn: AJW    Approved: CJ    Date: 26/06/2007 Job No: <b>43177456</b> File No: 43177456.015.wor	Title <b>GAS PIPELINE SURVEY LOCATIONS</b> Figure: <b>3b</b>
--	--	--	--	--





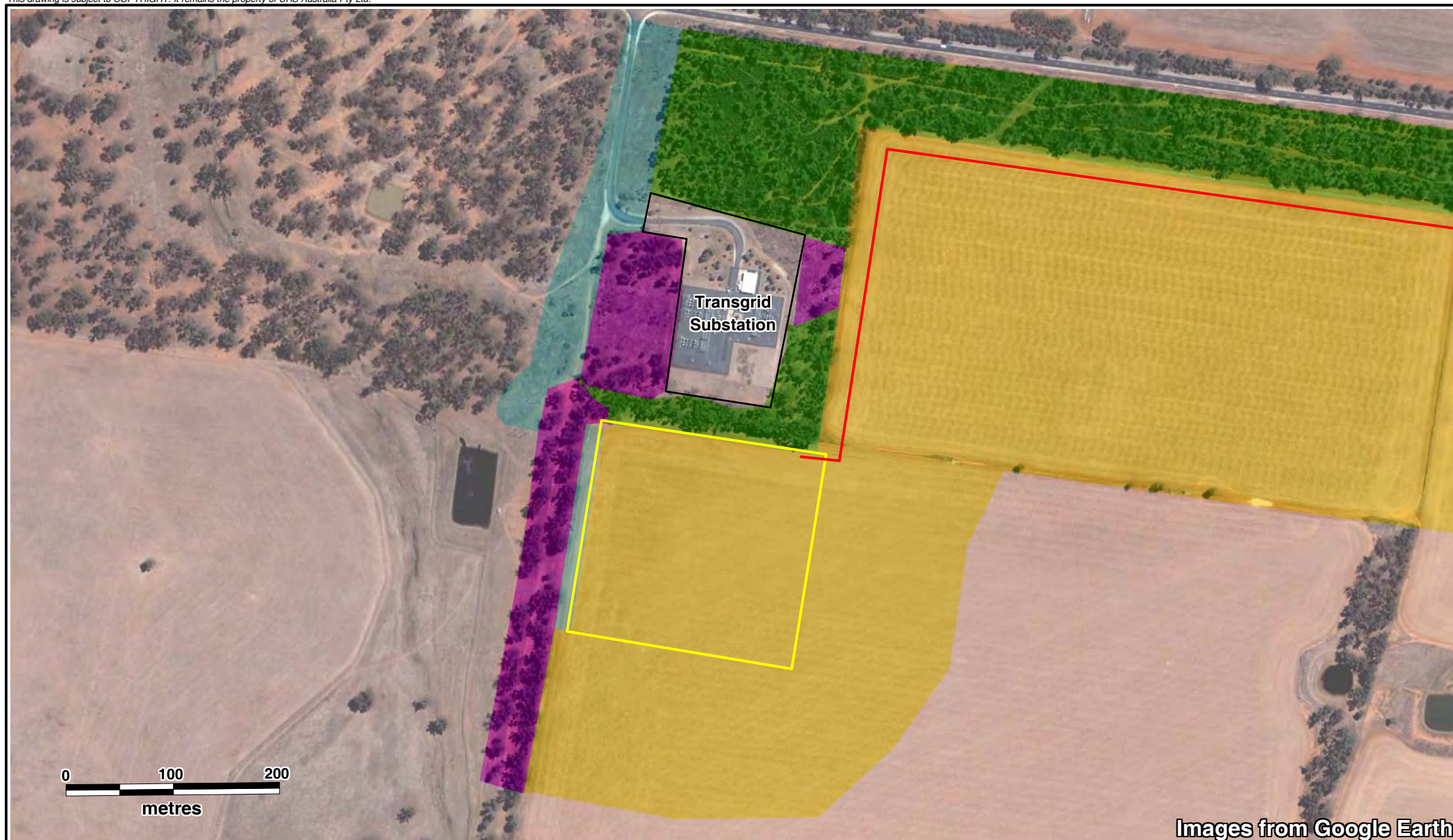
<p><b>Legend</b></p> <p>— Proposed Gas Pipeline Route</p> <p>— Existing Gas Pipeline</p> <p>★ Grey-crowned Babbler (Vulnerable under TSC Act)</p> <p>/// Fuzzy Box Woodland (TSC Act Listed EEC)</p>	<p>Client</p> <p>INTERNATIONAL POWER (AUSTRALIA) PTY LTD</p> <p><b>URS</b></p>	<p>Project</p> <p>ENVIRONMENTAL ASSESSMENT - PARKES PEAKING POWER PLANT</p> <p>Drawn: AJW    Approved: CJ    Date: 21/03/2007</p> <p>Job No: <b>43177456</b>    File No: 43177456.021.wor</p>	<p>Title</p> <p><b>THREATENED SPECIES AND COMMUNITIES</b></p> <p>Figure: <b>4</b></p>
--	--	---	---












	Proposed Gas Pipeline Route		Ungrazed Cleared Land		Client <b>INTERNATIONAL POWER (AUSTRALIA) PTY LTD</b>	Project <b>ENVIRONMENTAL ASSESSMENT - PARKES PEAKING POWER PLANT</b>	Title <b>GAS PIPELINE VEGETATION COMMUNITIES</b>
	Existing Gas Pipeline	Grazed Cleared Land	Ploughed Cropland	Disturbed Remnant Woodland		Drawn: AJW    Approved: CJ    Date: 21/08/2007	Figure: <b>5a</b>
Fuzzy Box Woodland (TSC Act Listed EEC)						Job No: <b>43177456</b> File No: 43177456.048.wor	





	 Proposed Gas Pipeline Route	 Ungrazed Cleared Land	Client INTERNATIONAL POWER (AUSTRALIA) PTY LTD	Project  ENVIRONMENTAL ASSESSMENT - PARKES PEAKING POWER PLANT	Title  PLANT SITE VEGETATION COMMUNITIES		
	 Fuzzy Box Woodland (TSC Act Listed EEC)	 Ploughed Cropland					
	 Disturbed Remnant Woodland						
Source: Map compiled using Cadastral Plus, 2004 MapInfo Australain Pty Ltd and PSMA Australia Ltd.				Drawn: AJW	Approved: CJ	Date: 21/08/2007	Figure: 5b
				Job No: 43177456	File No: 43177456.023.wor		





- |  |   |
|--|---|
| <span style="color: red;">—</span> Proposed Gas Pipeline Route   | <span style="background-color: brown; border: 1px solid black; display: inline-block; width: 20px; height: 10px;"></span> Grazed Cleared Land |
| <span style="color: blue;">—</span> Alternative Section 1  | <span style="background-color: yellow; border: 1px solid black; display: inline-block; width: 20px; height: 10px;"></span> Ploughed Cropland  |
| <span style="background-color: green; border: 1px solid black; display: inline-block; width: 20px; height: 10px;"></span> Fuzzy Box Woodland<br>(TSC Act Listed EEC) |   |
| <span style="background-color: purple; border: 1px solid black; display: inline-block; width: 20px; height: 10px;"></span> Disturbed Remnant Woodland                |   |

Source: Map compiled using Cadastral Plus, 2004 MapInfo Australain Pty Ltd and PSMA Australia Ltd.

Client  
**INTERNATIONAL POWER  
(AUSTRALIA) PTY LTD**

**URS**

Project  
**ENVIRONMENTAL ASSESSMENT  
- PARKES PEAKING POWER PLANT**

Drawn: AJW	Approved: CJ	Date: 26/06/2007
Job No: <b>43177456</b>		File No: 43177456.024.wor

Title  
**ROAD RESERVE  
VEGETATION COMMUNITIES**

Figure: **5c**