

# **KINGS BEACH (No. 2) PTY LTD CASUARINA BEACH TOWN CENTRE**

APPLICATION FOR DEVELOPMENT APPROVAL  
DRAWINGS REFERENCED IN ENGINEERING STATEMENT, JUNE 2008



#### PROPERTY DESCRIPTION

LOT 223 ON LOT 1048494  
Parish of Cudgen  
County of Rous



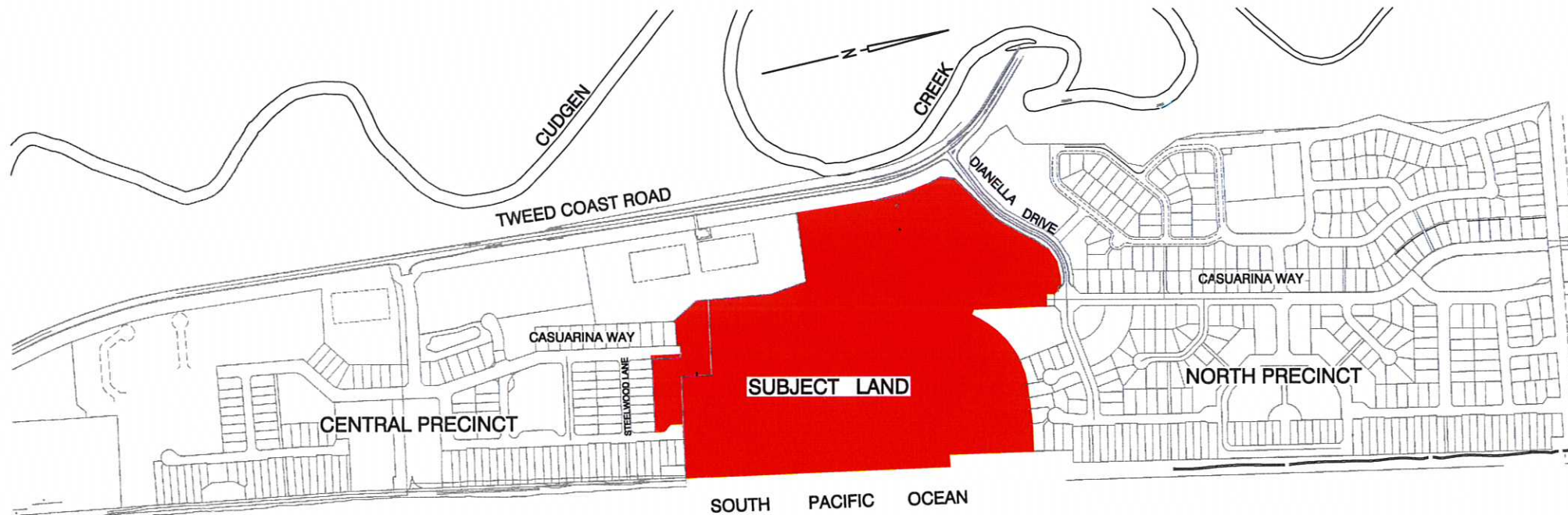


LOCALITY PLAN  
NOT TO SCALE

DEVELOPMENT APPLICATION FIGURES LIST	
Fig No.	Description
FIGURE No. DA20	LOCALITY PLAN, SITE PLAN AND SCHEDULE OF DRAWINGS
FIGURE No. DA21	SUBJECT LAND AND AIR PHOTO 2005
FIGURE No. DA22	EXISTING CONTOURS PLAN
FIGURE No. DA23	ROAD LAYOUT PLAN
FIGURE No. DA24	FINISHED SURFACE CONTOURS
FIGURE No. DA25	CUT / FILL DEPTHS LAYOUT PLAN
FIGURE No. DA26	SITE CROSS SECTIONS
FIGURE No. DA27	EROSION AND SEDIMENT CONTROL LAYOUT PLAN
FIGURE No. DA28	ROAD No 1 LONGITUDINAL SECTION
FIGURE No. DA29	CASUARINA WAY ( ROAD No.2 ) LONGITUDINAL SECTION
FIGURE No. DA30	ROAD No 3 ( CASUARINA WAY ) AND ROAD No 4 LONGITUDINAL SECTIONS
FIGURE No. DA31	ROAD No 5 LONGITUDINAL SECTION
FIGURE No. DA32	ROAD No 6 LONGITUDINAL SECTION
FIGURE No. DA33	ROAD No 7 LONGITUDINAL SECTION
FIGURE No. DA34	TYPICAL CROSS SECTION - SHEET 1
FIGURE No. DA35	TYPICAL CROSS SECTION - SHEET 2
FIGURE No. DA36	CATCHMENT AREAS AND DRAINAGE PATHS
FIGURE No. DA37	SEWER RETICULATION LAYOUT PLAN
FIGURE No. DA38	WATER RETICULATION LAYOUT PLAN
FIGURE No. DA39	SUBDIVISION LAYOUT PLAN
FIGURE No. DA40	DEDICATION AND EASEMENT PLAN
FIGURE No. DA41	STAGING PLAN
FIGURE No. DA42	PROPOSED FRONTAL CYCLEWAY/INFILTRATION BASINS LAYOUT PLAN
FIGURE No. DA43	PROPOSED FRONTAL CYCLEWAY/INFILTRATION BASINS CROSS SECTIONS
FIGURE No. DA44	PROPOSED CYCLEWAY/DRAINAGE RE-ALIGNMENT LAYOUT PLAN
FIGURE No. DA45	PROPOSED CYCLEWAY/DRAINAGE RE-ALIGNMENT LONGSECTION
FIGURE No. DA46	PROPOSED ADDITIONAL WORKS IN LOT 10

CARDNO STANDARD DRAWING LIST	
Drg No.	Description
S5/6-20	SEDIMENT AND EROSION CONTROL DETAILS

TWEED SHIRE COUNCIL STANDARD DRAWINGS LIST	
Drg No.	Description
S.D. 501	SEDIMENT CONTROL DEVICES SEDIMENT FENCE ENTRY/EXIT SEDIMENT TRAP
S.D. 502	SEDIMENT CONTROL DEVICES KERB AND FIELD INLETS, CHECK DAMS & STRAW BALE BANK



SITE PLAN  
NOT TO SCALE

© Cardno (Qld) Pty Ltd All Rights Reserved 2002.  
Copyright in the whole and every part of this drawing belongs to Cardno (Qld) Pty Ltd and may not be used, sold, transferred, copied or reproduced in whole or in part in any manner or form or on any media, to any person other than by agreement with Cardno (Qld) Pty Ltd.

This document is produced by Cardno (Qld) Pty Ltd solely for the benefit of and use by the client in accordance with the terms of the retainer. Cardno (Qld) Pty Ltd does not and shall not assume any responsibility or liability whatsoever to any third party arising out of any use or reliance by third party on the content of this document.

**Cardno**  
Cardno (Qld) Pty Ltd ACN: 051 074 992  
Commercial Centre, Isle of Capri  
Gold Coast City, Queensland 4217  
Email: gco@cardno.com.au

KINGS BEACH (No. 2) PTY LTD	
CASUARINA BEACH	SCALE :- NOT TO SCALE A1
TOWN CENTRE	DATE :- 10 JULY, 2007 REV. J
DA SUBMISSION	DRAWING No. 7079/4/1-FIG DA20

FIGURE No.DA20J(06/11/09)  
LOCALITY PLAN, SITE PLAN AND  
SCHEDULE OF DRAWINGS





© Cardno (Qld) Pty Ltd All Rights Reserved 2002.  
Copyright in the whole and every part of this drawing belongs to Cardno (Qld) Pty Ltd and may not be used, sold, transferred, copied or reproduced in whole or in part in any manner or form or on any media, to any person other than by agreement with Cardno (Qld) Pty Ltd.

This document is produced by Cardno (Qld) Pty Ltd solely for the benefit of and use by the client in accordance with the terms of the retainer. Cardno (Qld) Pty Ltd does not and shall not assume any responsibility or liability whatsoever to any third party arising out of any use or reliance by third party on the content of this document.

**Cardno**  
Cardno (Qld) Pty Ltd ACN: 051 074 992  
Commercial Centre, Isle of Capri  
Gold Coast City, Queensland 4217  
Email: geo@cardno.com.au

IMAGE FILE NAME: I:\707901 Casuarina Beach\77\Reports\casuarina01.jpg  
G:\707901\04\01\DA Approval\70790401-figure-sheet.dwg  
CAD FILE NAME: G:\7079\04\01\DA Approval\November Amendments\70790401DA21.dwg

KINGS BEACH (No. 2) PTY LTD		
CASUARINA BEACH TOWN CENTRE DA SUBMISSION	SCALE :-	NOT TO SCALE
	DATE :-	10 JULY, 2007
	REV. E	
DRAWING No.		7079/4/1-FIG DA21

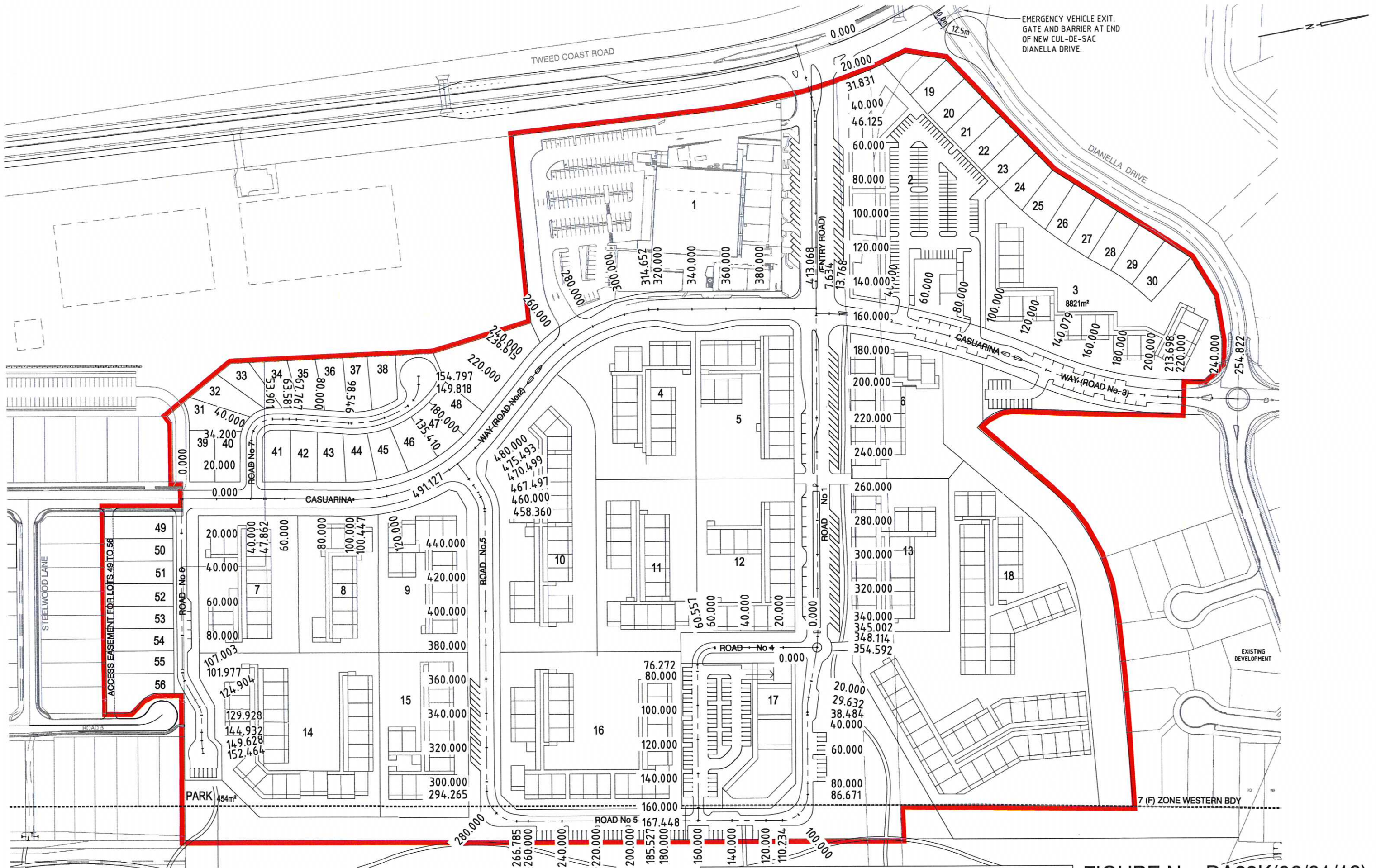
FIGURE No.DA21F(10/08/09)

SUBJECT LAND  
AIR PHOTO 2005









20 10 0 20 40 60 80  
SCALE BEFORE REDUCTION  
1:2000

© Cardno (Qld) Pty Ltd All Rights Reserved 2002.  
Copyright in the whole and every part of this drawing belongs to Cardno (Qld) Pty Ltd and may not be used, sold, transferred, copied or reproduced in whole or in part in any manner or form or on any media, to any person other than by agreement with Cardno (Qld) Pty Ltd.

This document is produced by Cardno (Qld) Pty Ltd solely for the benefit of and use by the client in accordance with the terms of the retainer. Cardno (Qld) Pty Ltd does not and shall not assume any responsibility or liability whatsoever to any third party arising out of any use or reliance by third party on the content of this document.

**Cardno**  
Cardno (Qld) Pty Ltd ACN: 051 074 992  
Commercial Centre, Isle of Capri  
Gold Coast City, Queensland 4217  
Email: gco@cardno.com.au

KINGS BEACH (No. 2) PTY LTD

CASUARINA BEACH  
TOWN CENTRE  
DA SUBMISSION

SCALE :- 1:2000	A1
DATE :- 10 JULY, 2007	REV. K
DRAWING No.	
7079/4/1-FIG DA23	

FIGURE No. DA23K(06/01/10)  
ROAD LAYOUT PLAN





NOTE:  
REFER FIGURE DA26 FOR  
SITE CROSS SECTIONS

20 10 0 20 40 60 80m  
SCALE BEFORE REDUCTION 1:1000

© Cardno (Qld) Pty Ltd All Rights Reserved 2002.

Copyright in the whole and every part of this drawing belongs to Cardno (Qld) Pty Ltd and may not be used, sold, transferred, copied or reproduced in whole or in part in any manner or form or on any media, to any person other than by agreement with Cardno (Qld) Pty Ltd.

This document is produced by Cardno (Qld) Pty Ltd solely for the benefit of and use by the client in accordance with the terms of the retainer. Cardno (Qld) Pty Ltd does not and shall not assume any responsibility or liability whatsoever to any third party arising out of any use or reliance by third party on the content of this document.



Cardno (Qld) Pty Ltd ACN: 051 074 992  
Commercial Centre, Isle of Capri  
Gold Coast City, Queensland 4217  
Email: gco@cardno.com.au

KINGS BEACH (No. 2) PTY LTD

CASUARINA BEACH

TOWN CENTRE

DA SUBMISSION

SCALE :- AS SHOWN	A1
DATE :- 10 JULY, 2007	REV. M
DRAWING No.	
7079/2/1-FIG DA24	

FIGURE No. DA24M(06/01/10)  
FINISHED SURFACE CONTOURS





# LEGEND:

- 1.0 — FILL DEPTH CONTOURS (0.5m INTERVALS)
- 1.0 — CUT DEPTH CONTOURS (0.5m INTERVALS)
- CUT/FILL INTERFACE
- CUT AREA
- FILL AREA
- ADDITIONAL MINOR CUT FOR INFILTRATION BASINS
- SITE BOUNDARY

20 10 0 20 40 60 80  
SCALE BEFORE REDUCTION 1:1000

© Cardno (Qld) Pty Ltd All Rights Reserved 2002.  
Copyright in the whole and every part of this drawing belongs to Cardno (Qld) Pty Ltd and may not be used, sold, transferred, copied or reproduced in whole or in part in any manner or form or on any media, to any person other than by agreement with Cardno (Qld) Pty Ltd.

This document is produced by Cardno (Qld) Pty Ltd solely for the benefit of and use by the client in accordance with the terms of the retainer. Cardno (Qld) Pty Ltd does not and shall not assume any responsibility or liability whatsoever to any third party arising out of any use or reliance by third party on the content of this document.

**Cardno**  
Cardno (Qld) Pty Ltd ACN: 051 074 992  
Commercial Centre, Isle of Copri  
Gold Coast City, Queensland 4217  
Email: gco@cardno.com.au

KINGS BEACH (No. 2) PTY LTD

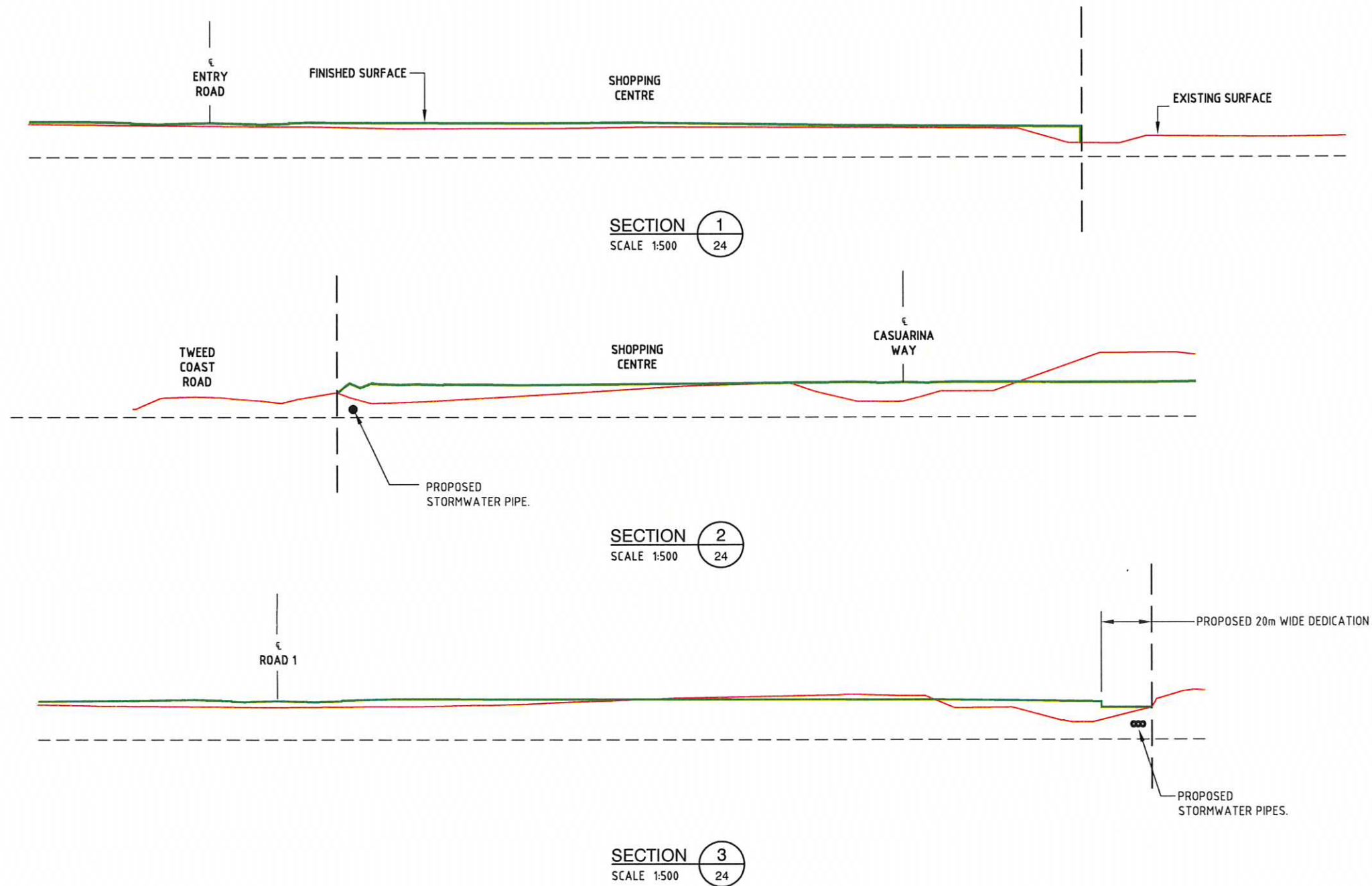
CASUARINA BEACH  
TOWN CENTRE  
DA SUBMISSION

SCALE: 1:2000 A1  
DATE: 10 JULY, 2007 REV. K  
DRAWING No.  
7079/4/1-FIG DA25

FIGURE No. DA25K(21/12/09)

CUT / FILL DEPTHS  
LAYOUT PLAN





10 5 0 10 20 30 40m  
SCALE BEFORE REDUCTION 1:500

© Cardno (Qld) Pty Ltd All Rights Reserved 2002.  
Copyright in the whole and every part of this drawing belongs to Cardno (Qld) Pty Ltd and may not be used, sold, transferred, copied or reproduced in whole or in part in any manner or form or on any media, to any person other than by agreement with Cardno (Qld) Pty Ltd.

This document is produced by Cardno (Qld) Pty Ltd solely for the benefit of and use by the client in accordance with the terms of the retainer. Cardno (Qld) Pty Ltd does not and shall not assume any responsibility or liability whatsoever to any third party arising out of any use or reliance by third party on the content of this document.

**Cardno**  
Cardno (Qld) Pty Ltd ACN: 051 074 992  
Commercial Centre, 1111 of Coprt  
Gold Coast City, Queensland 4217  
Email: gco@cardno.com.au

KINGS BEACH (No. 2) PTY LTD		
CASUARINA BEACH  TOWN CENTRE  DA SUBMISSION	SCALE :- 1500	
	A1	
	DATE :- 10 JULY, 2007	REV. I
	DRAWING No. 7079/2/1-FIG DA26	

FIGURE No. DA26I(21/12/09)  
SITE CROSS SECTIONS



SEDIMENT BASIN SIZES

BASIN NUMBER	MINIMUM BASIN SIZE (m)
SB1A	14 x 42 x 0.6
SB1B	14 x 42 x 0.6
SB2	6 x 17 x 0.6
SB3	8 x 24 x 0.6

NOTES:

1. EROSION AND SEDIMENT CONTROL MEASURES TO BE INSTALLED AND MODIFIED TO SUIT THE LANDFORM AT THE TIME.
2. IT IS EXPECTED THAT RUNOFF WITHIN SEDIMENT BASINS WILL INFILTRATE THROUGH THE SAND FILTER MEDIA.
3. SEDIMENT BASIN SB1A TO BE RELOCATED TO POSITION OF BASIN SB1B AS GRADING OF CATCHMENT VARIES DURING BULK EARTHWORKS
4. TSC's DEVELOPMENT DESIGN SPECIFICATION D7 ANNEXURE A - "CODE OF PRACTICE FOR SOIL AND WATER MANAGEMENT ON CONSTRUCTION WORKS," SECTION D7.A7 SEDIMENT CONTROL CONDITION 7.2 STATES: "SEDIMENT BASIN(S) MUST BE CONSTRUCTED WHERE THE AREA TO BE DEVELOPED EXCEEDS 1 HECTARE. WHERE IT IS LESS THEN 1 HECTARE, OTHER SEDIMENT CONTROL DEVICES MAY BE ACCEPTED." THEREFORE FOR CATCHMENT AREAS OF GENERALLY 1 HECTARE OR LESS EROSION CONTROL DEVICES OTHER THAN SEDIMENTATION BASINS HAVE BEEN UTILISED.

LEGEND:

- SB3

TEMPORARY SEDIMENT BASIN
- SEDIMENT BASIN DISCHARGE ARRANGEMENT (REFER CARDNO STD DRG S5/6-20)
- 5.5

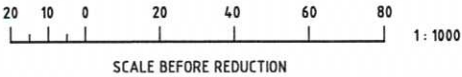
EXISTING CONTOURS
- SF

SEDIMENT FILTER FENCE (REFER TSC STD DRG S.D.501 REV B)
- PB

PERIMETER BUND (REFER CARDNO STD DRG S5/6-20)
- CD

CATCH DRAIN (REFER CARDNO STD DRG S5/6-20)
- STABILISED SITE ACCESS (REFER CARDNO STD DRG S5/6-20)
- E

PRELIMINARY BULK EARTHWORKS CATCHMENT AREA
- SITE BOUNDARY



© Cardno (Qld) Pty Ltd All Rights Reserved 2002.  
Copyright in the whole and every part of this drawing belongs to Cardno (Qld) Pty Ltd and may not be used, sold, transferred, copied or reproduced in whole or in part in any manner or form or on any media, to any person other than by agreement with Cardno (Qld) Pty Ltd.

This document is produced by Cardno (Qld) Pty Ltd solely for the benefit of and use by the client in accordance with the terms of the retainer. Cardno (Qld) Pty Ltd does not and shall not assume any responsibility or liability whatsoever to any third party arising out of any use or reliance by third party on the content of this document.

**Cardno**

Cardno (Qld) Pty Ltd ACN: 051 074 992  
Commercial Centre, Isle of Capri  
Gold Coast City, Queensland 4217  
Email: gco@cardno.com.au

KINGS BEACH (No. 2) PTY LTD

CASUARINA BEACH TOWN CENTRE

DA SUBMISSION

SCALE :- 1:1,000

DATE :- 10 JULY, 2007

DRAWING No.

A1

REV. J

7079/4/1-FIG DA27

FIGURE No.DA27J(06/01/10)  
EROSION & SEDIMENT  
CONTROL LAYOUT PLAN

