



**Kelleher Nightingale Consulting Pty Ltd**

Archaeological and Heritage Management

ABN 26 120 187 671

17 December 2007

Chontelle Perucich  
Environment & Community Officer  
Northern Hume Alliance  
86 Murray Street  
Wagga Wagga NSW 2650

**Re. Identification of additional impacts to LB-PAD-2  
potential Aboriginal heritage site  
N3 Little Billabong**

Dear Chontelle,

This letter outlines the changes to impacts to an identified area of potential Aboriginal heritage significance for the Little Billabong (N3) section of the proposed Hume Highway Duplication. The changes are the result of revised drainage works and represent an alteration from the original RTA concept.

**N3 Little Billabong**

LB-PAD-2 is a potential archaeological deposit (PAD) situated along Little Billabong Creek. The PAD was identified by pedestrian survey in 2006. The PAD is roughly seven kilometres long and about half a kilometre wide (Figure LB1). The area identified as LB-PAD-2 comprises several areas of high archaeological potential. The connections between these potential cultural features within the greater PAD display a potentially important spatial continuity as they show how a landform (such as the extended creek bank) functioned within Aboriginal culture. The land encompassed by LB-PAD-2 is therefore comprised of both areas of high archaeological potential and the spatial connections between these places.

**Impact**

Works related to the Hume Highway Duplication Project at Little Billabong will have an impact on a discrete portion of LB-PAD-2. Proposed drainage works will slice through a small portion of the PAD. These works include: the installation of a drainage channel just south of the junction between Little Billabong Road and the Hume Highway (Figure 2), culvert modifications opposite Westby Lane (Figure 3), and associated channel works along the east side of the highway.

**Test Excavation**

Impacts to the PAD require a test excavation to determine the appropriate level of mitigation which may be required for the PAD.

**Scope of Work**

The test excavation program will only target the designated impact area (Figures 2 and 3). This tactical approach will allow an informed assessment of the impact area. It is anticipated that approximately 20 1m<sup>2</sup> test squares will be required to assess the impact area. The test methodology will follow the procedures established for the existing archaeological program. All archaeological work will be undertaken with the participation of registered Aboriginal community stakeholders following the requisite consultation process.

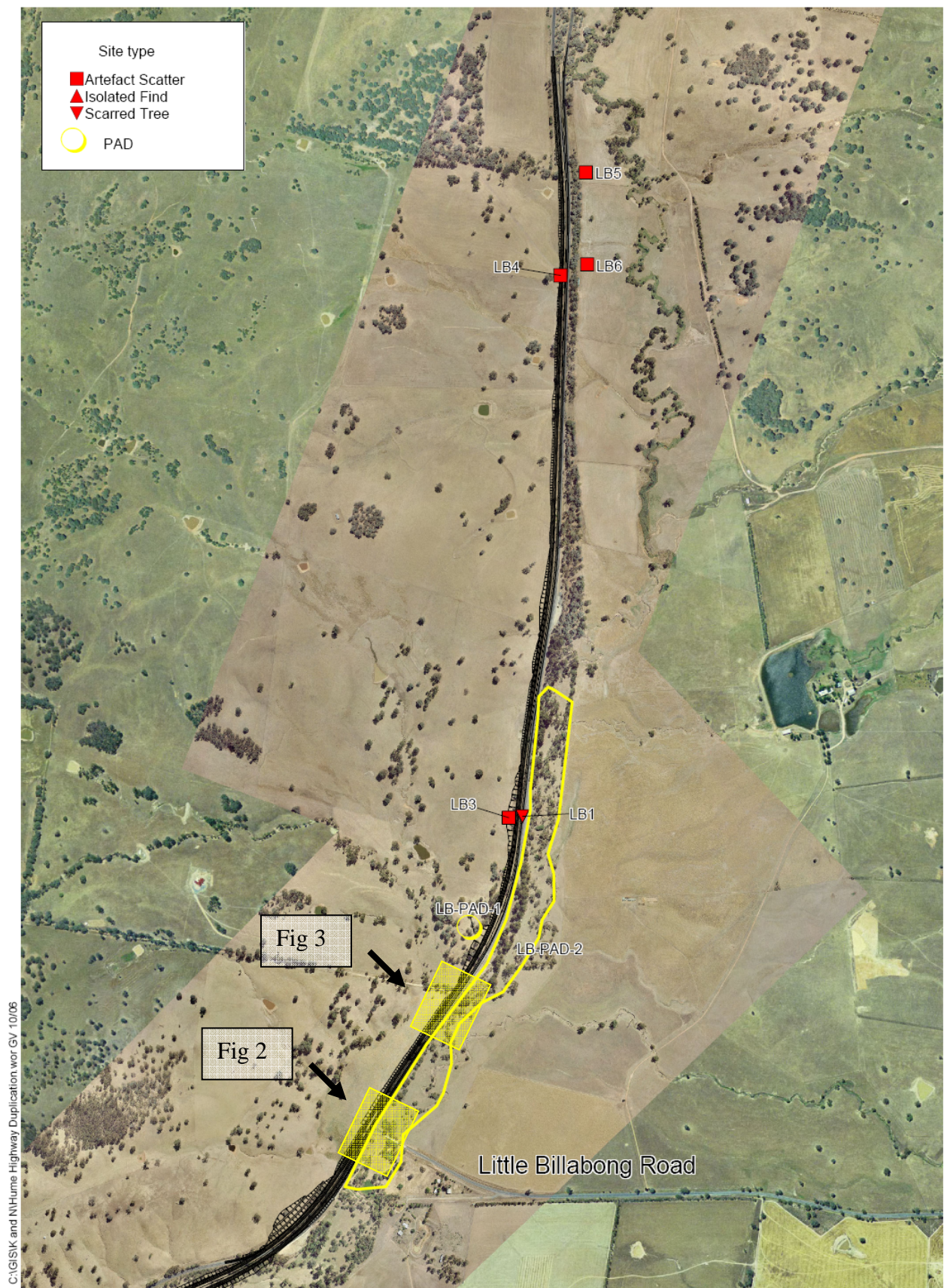
If you have any questions or would like to discuss this further, please do not hesitate to contact me

Office: (02) 9993 0571  
Fax: (02) 9283 8720  
Mobile: Matthew 0400 821 264  
Email: [Matthew.Kelleher@knconsult.com.au](mailto:Matthew.Kelleher@knconsult.com.au)

Yours sincerely

Dr Matthew Kelleher  
Director/Archaeologist  
Kelleher Nightingale Consulting Pty Ltd





C:\GIS\K and N\Hume Highway Duplication\work\GV 10\06



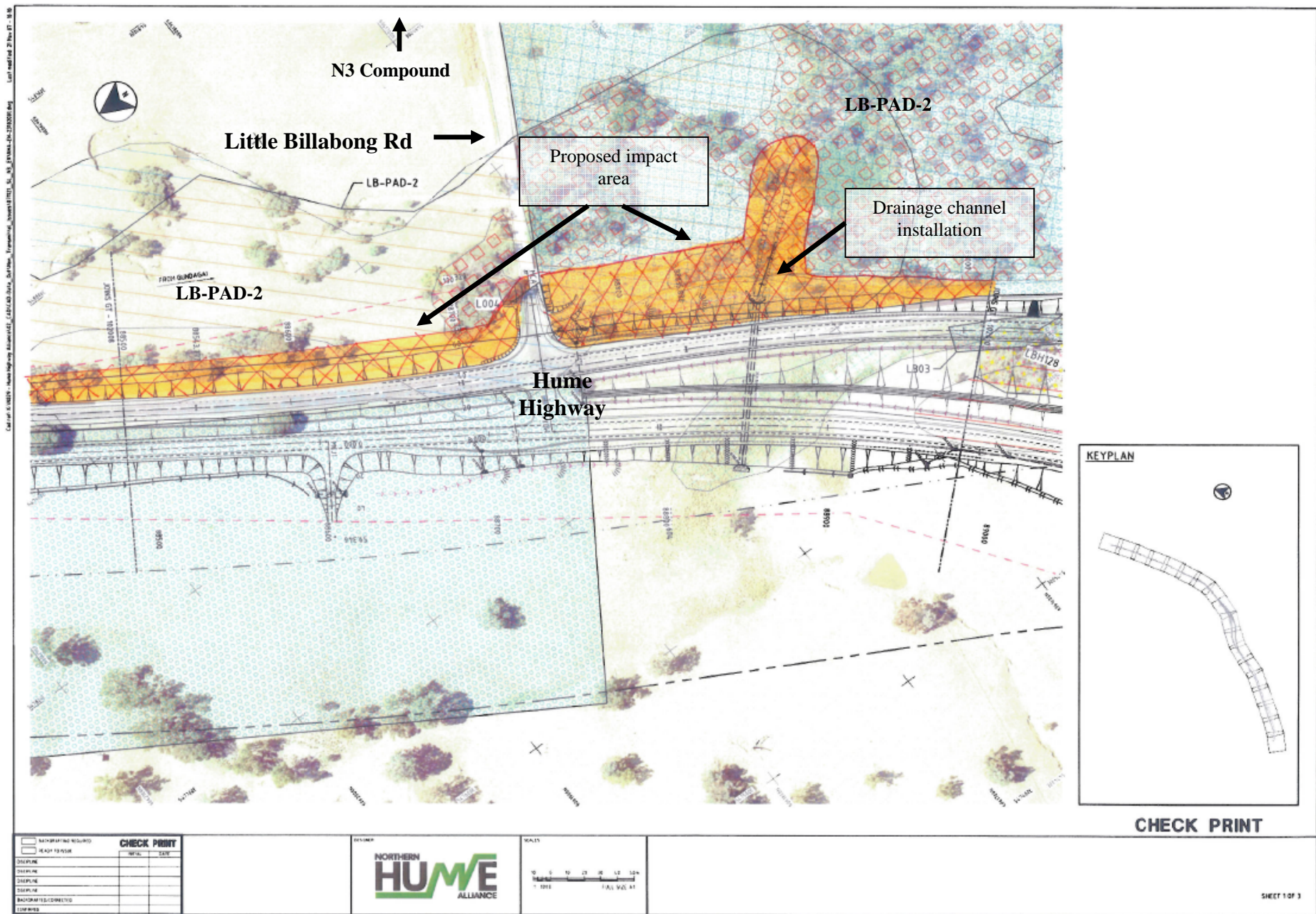


Figure 2. LB-PAD-2 showing proposed impact area.



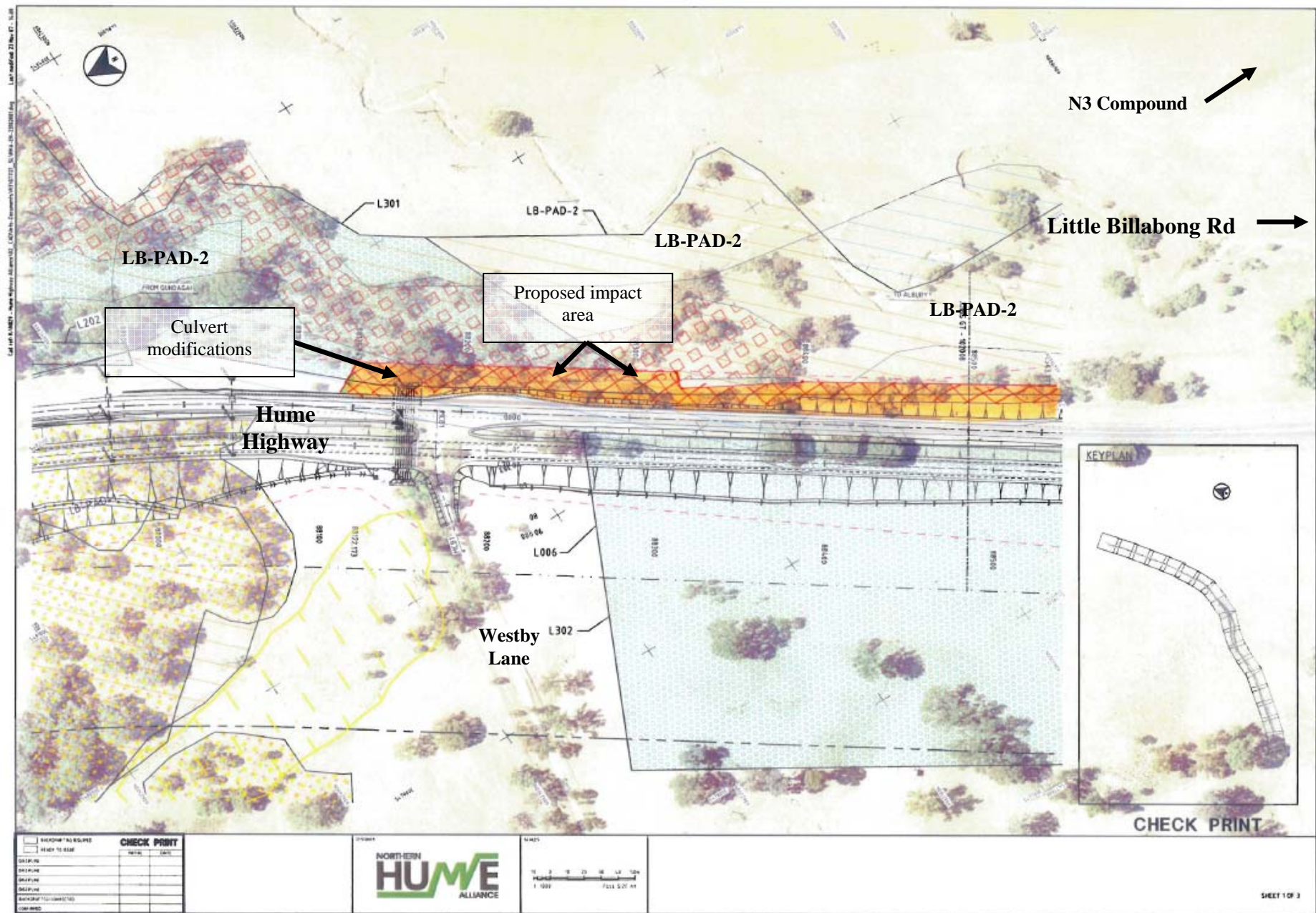


Figure 3. LB-PAD-2 showing proposed impact area.