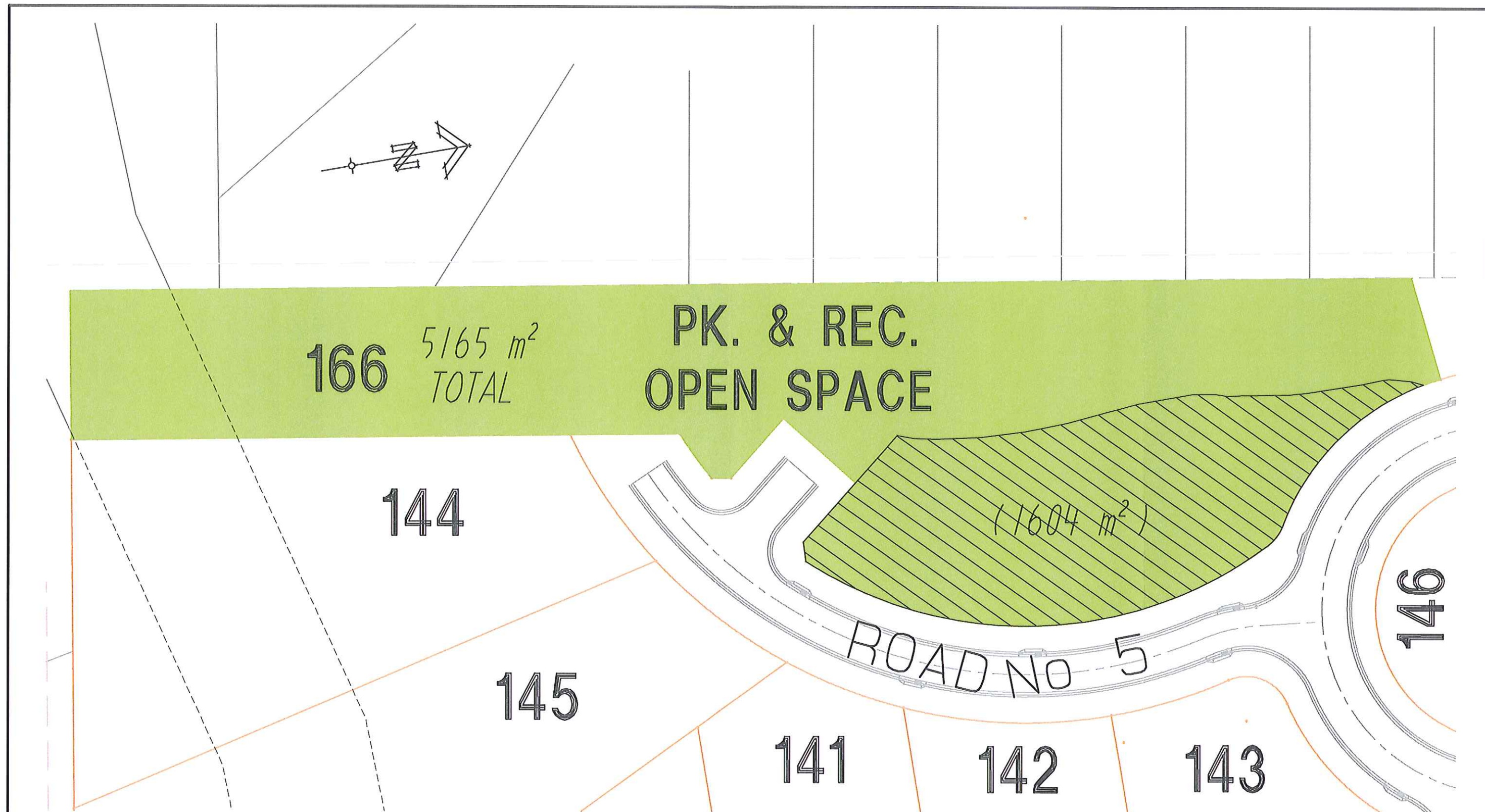






<div>Revision</div> <div>Client</div>		<div>Chk'd</div>	<div>Important Notes: (THIS NOTE IS AN INTEGRAL PART OF THIS PLAN)</div> <div>All dimensions and areas are approximate only, and are subject to survey and Council approval.</div> <div>Proposed Landform slope has been determined from approved Conics landscape plan dated August 2008 DWG No. 71887-SD-2.04</div> <div>The boundaries shown on this plan should not be used for final detailed engineers design.</div> <div><div><div></div><div>.... Park and Recreation / Water Quality</div></div><div><div></div><div>.... Park and Recreation (less than 8% slope)</div></div></div>	<div>LOCAL PARK AREAS</div> <div>PROPOSED SUBDIVISION</div> <div>LOT 9 IN DP 1039569</div> <div>FRASER DRIVE – TWEED HEADS SOUTH</div> <div>Parish of TERRANORA County of ROUS</div> <div>J: \14200–\14246\Projects\open–space.pro</div> <table><tr><td>Scale</td><td>Level Datum</td><td>F.Bk</td><td>L.Bk</td><td>Drawn SDS</td></tr><tr><td>1 : 400 @ A3</td><td>—</td><td>—</td><td>—</td><td>Chk'd</td></tr></table>	Scale	Level Datum	F.Bk	L.Bk	Drawn SDS	1 : 400 @ A3	—	—	—	Chk'd	<div><div>B & P SURVEYS</div><div>CONSULTING SURVEYORS</div><div>A.B.N. 55 010117236</div><div>30 Beryl Street</div><div>Tweed Heads, NSW, 2485, Australia</div><div>Telephone: (07) 5536 3611</div><div>Fax: (07) 5536 3701</div><div>Email: tweed@bpsurveys.com.au</div><div>Webpage: www.bpsurveys.com.au</div><div>Offices Also At : Surfers Paradise Murwillumbah</div><div>Ph.(07) 55390499 Ph.(02) 66721924</div></div> <div><div><div></div><div>A QUALITY ASSURED COMPANY</div></div><div><div></div><div></div><div></div><div></div></div></div> <table><tr><td>Ref. No.</td><td>Date</td><td>Drawing No./Size</td><td>Rev.</td></tr><tr><td>T14246</td><td>28.01.2010</td><td>18043 D</td><td>—</td></tr></table>	Ref. No.	Date	Drawing No./Size	Rev.	T14246	28.01.2010	18043 D	—
Scale	Level Datum	F.Bk	L.Bk	Drawn SDS																			
1 : 400 @ A3	—	—	—	Chk'd																			
Ref. No.	Date	Drawing No./Size	Rev.																				
T14246	28.01.2010	18043 D	—																				
<div>GREENVIEW DEVELOPMENTS</div>																							

GREENVIEW DEVELOPMENTS



		Important Notes: (THIS NOTE IS AN INTEGRAL PART OF THIS PLAN)		LOCAL PARK AREAS					B & P SURVEYS CONSULTING SURVEYORS A.B.N. 55 010117236 30 Beryl Street Tweed Heads, NSW, 2485, Australia Telephone: (07) 5536 3611 Fax: (07) 5536 3701 Email: tweed@bpsurveys.com.au Webpage: www.bpsurveys.com.au																
		All dimensions and areas are approximate only, and are subject to survey and Council approval.		PROPOSED SUBDIVISION LOT 9 IN DP 1039569 FRASER DRIVE – TWEED HEADS SOUTH																					
		Proposed Landform slope has been determined from approved Conics landscape plan dated August 2008 DWG No. 71887-SD-2.05		Parish of TERRANORA County of ROUS					A QUALITY ASSURED COMPANY 																
		The boundaries shown on this plan should not be used for final detailed engineers design.		J: \14200–\14246\Projects\open–space.pro					Offices Also At : Surfers Paradise Murwillumbah Ph. (07) 55390499 Ph. (02) 66721924																
Revision		Chk'd		 Park and Recreation		 Park and Recreation (less than 8% slope)		Scale 1 : 500 @ A3		Level Datum —		F.Bk —		L.Bk —		Drawn SDS Chk'd		Ref. No. T14246		Date 28.01.2010		Drawing No./Size 18038 D		Rev. —	
Client																									
GREENVIEW DEVELOPMENTS																									

- Park and Recreation
- Park and Recreation
(less than 8% slope)