

Notice of Modification

Section 75W of the *Environmental Planning and Assessment Act 1979*

As delegate of the Minister for Planning under delegation executed on 14 September 2011, we the Planning Assessment Commission of New South Wales (the Commission) hereby approve the modification of the project application referred to in Schedule 1, subject to the conditions outlined in Schedule 2.

Member of the Commission

Member of the Commission

Sydney

2014

SCHEDULE 1

Application No:	Project Approval (MP 06_239), granted by then Minister for Planning on 6 November 2007
Proponent:	Veolia Environmental Services (Australia) Pty Ltd
Approval Authority:	Minister for Planning
Land:	- Lot 1 DP 241092; - Lots 33, 34, 69 & 97 DP 754919; and - Lot 4 DP 830765.
Project:	Woodlawn Alternative Waste Technology Project
Modification:	MP 06_0239 MOD 1 to amend: - site layout and infrastructure; - waste processing technology; and - hours of operation.

SCHEDULE 2

This project approval is modified by:

1. Replacing the definitions of 'Department' and 'EA' in the definitions list after Schedule 1 as follows:

Department	Department of Planning and Environment
EA	Environmental Assessment titled <i>Woodlawn Alternative Waste Technology Project</i> , dated November 2006, and the Response to Submissions dated May 2007, as modified by MP 06_0239 MOD 1

2. Deleting the definitions of 'DECC' and 'Director-General' in the definitions list after Schedule 1.
3. Inserting new definitions of 'EPA' and 'Secretary' in the definitions list after Schedule 1 in alphabetical order as follows:

EPA	Environment Protection Authority
Secretary	the Secretary of the Department, or nominee

4. Replacing all references to 'DECC' in the approval with 'EPA'.
5. Replacing all references to 'Director-General' in the approval with 'Secretary'.
6. Replacing Condition 2 in Schedule 2 with the following:

Terms of Approval

2. The Proponent shall carry out the project generally in accordance with the:
 - (a) EA;
 - (b) Statement of Commitments;
 - (c) modification application MP 06_0239 MOD 1, accompanying Environmental Assessment dated 20 January 2014 and Response to Submissions dated 6 March 2014 prepared by Veolia Environmental Services (Australia) Pty Ltd; and
 - (d) conditions of this approval.

Note: The layout of the project is shown in Appendix 1.

7. Replacing Condition 4 after Condition 3 in Schedule 3 with the following:

Limits on Outputs

4. Except for the following, the Proponent shall dispose of all outputs produced on site to the Woodlawn Landfill:
 - (a) recyclables extracted and delivered off-site for resource recovery purposes;
 - (b) restricted solid waste and hazardous waste extracted from the input waste stream and lawfully disposed of off-site; and
 - (c) compost output products approved for use under the POEO Act and Regulations.

Note: This approval does not alter the restrictions on input rates in the current approval for the Woodlawn Landfill in any way.

8. Replacing Condition 22 after Condition 21 in Schedule 3 with the following:
 22. The Applicant shall ensure that the project does not cause or permit the emission of any offensive odour (as defined in the POEO Act).
9. Replacing Condition 27 after Condition 26 in Schedule 3 with the following:
 27. The Proponent shall comply with the operating hours in Table 5, unless otherwise agreed by the Secretary.

Table 5: AWT Site Operating Hours

Activity	Day	Hours
<i>Construction</i>	Monday - Friday	7 am – 6 pm
	Saturday	7 am – 1 pm
	Sunday & Public Holidays	Nil
<i>Operations</i>	Monday - Saturday	6 am – 10 pm
<i>Emergency</i>	Monday - Sunday	Anytime

Note: Operation of BRS Drums and associated infrastructure is permitted to occur over 24 hours

10. Replacing the heading before Condition 29 after Condition 28 in Schedule 3 with the following:

Meteorological Monitoring

11. Deleting Condition 30 after Condition 29 in Schedule 3 and inserting the words 'Deleted'.

12. Replacing Condition 31 after Condition 30 in Schedule 3 with the following:

31. The Proponent shall:

- (a) provide sufficient car parking on site to accommodate the parking demand of the project;
- (b) ensure that the:
 - car parking is constructed in accordance with the relevant requirements of *Australian Standard AS 2890.1-2004*; and
 - internal road network is constructed in accordance with the relevant requirements of *Australian Standard AS 2890.2-2002*.

13. Replacing Condition 32 after Condition 31 in Schedule 3 with the following:

Road Maintenance Contributions

32. The Proponent shall contribute to both Palerang Council and Goulburn Mulwaree Council for the maintenance of the relevant sections of Collector and Bungendore Road that are used by the project. These contributions are to be paid quarterly, are subject to indexation and must be in general accordance with any relevant Section 94 Contributions Plan.

Notes:

- *In the event that one of the Council's does not have a relevant Section 94 Contributions Plan, then the adjoining Council's plan should be used instead.*
- *Goulburn Mulwaree Council's current applicable contributions plan (at 4 April 2014) is the 'Goulburn Mulwaree Section 94 Development Contributions Plan 2009 Amendment No. 2'. This plan is subject to indexation each year and is available on Council's website.*
- *Contributions which are directly associated with the local road network shall be separate (in addition to) any royalties Veolia Trust contributes to local community projects.*

14. Inserting a new Condition 34A after Condition 34 in Schedule 3 as follows:

34A. The Proponent shall prepare and implement a Waste Receipt and Vehicle Control Plan for the project to the satisfaction of the Secretary. The plan shall:

- (a) be approved by the Secretary prior to the commencement of operation;
- (b) be prepared in consultation with the EPA;
- (c) include details of the infrastructure, systems and procedures, that will be implemented to ensure compliance with the requirements of Section 88 of the POEO Act and Clauses 12 and 15 of the *Protection of the Environment (Waste) Regulation 2005*;
- (d) include details of all vehicle entry and exit points, including emergency exits; and
- (e) be incorporated into the Operational Environmental Management Plan for the project.

15. Inserting a new Condition 36 after Condition 35 in Schedule 3 as follows:

36. The Proponent shall construct all new buildings associated with the project using materials and colours that complement the surrounding landscape.

16. Inserting a new Condition 37 after Condition 36 in Schedule 3 as follows:

Landscaping Management

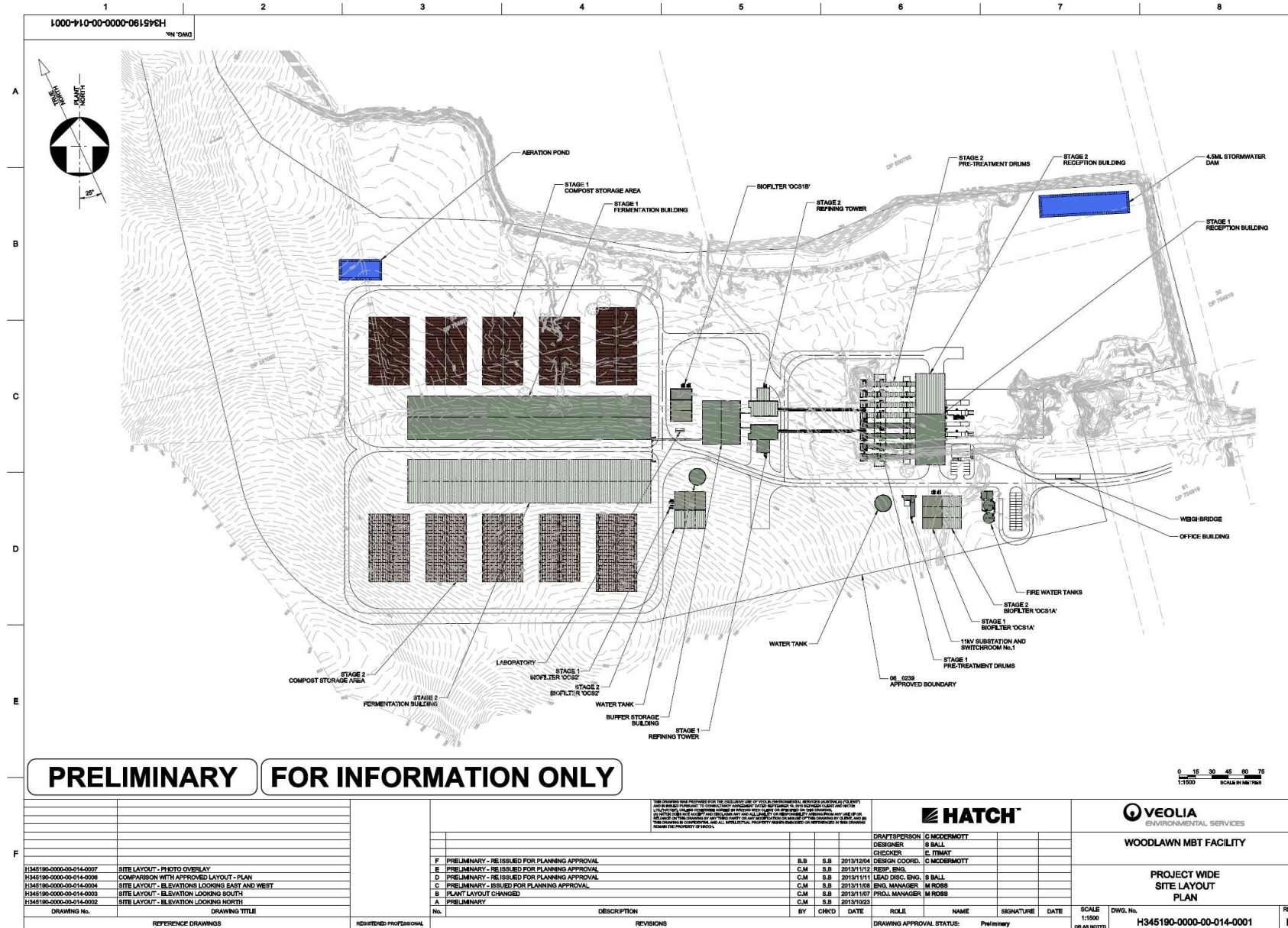
37. The Proponent shall prepare and implement a Landscaping Management Plan for the project to the satisfaction of the Secretary. The plan shall:

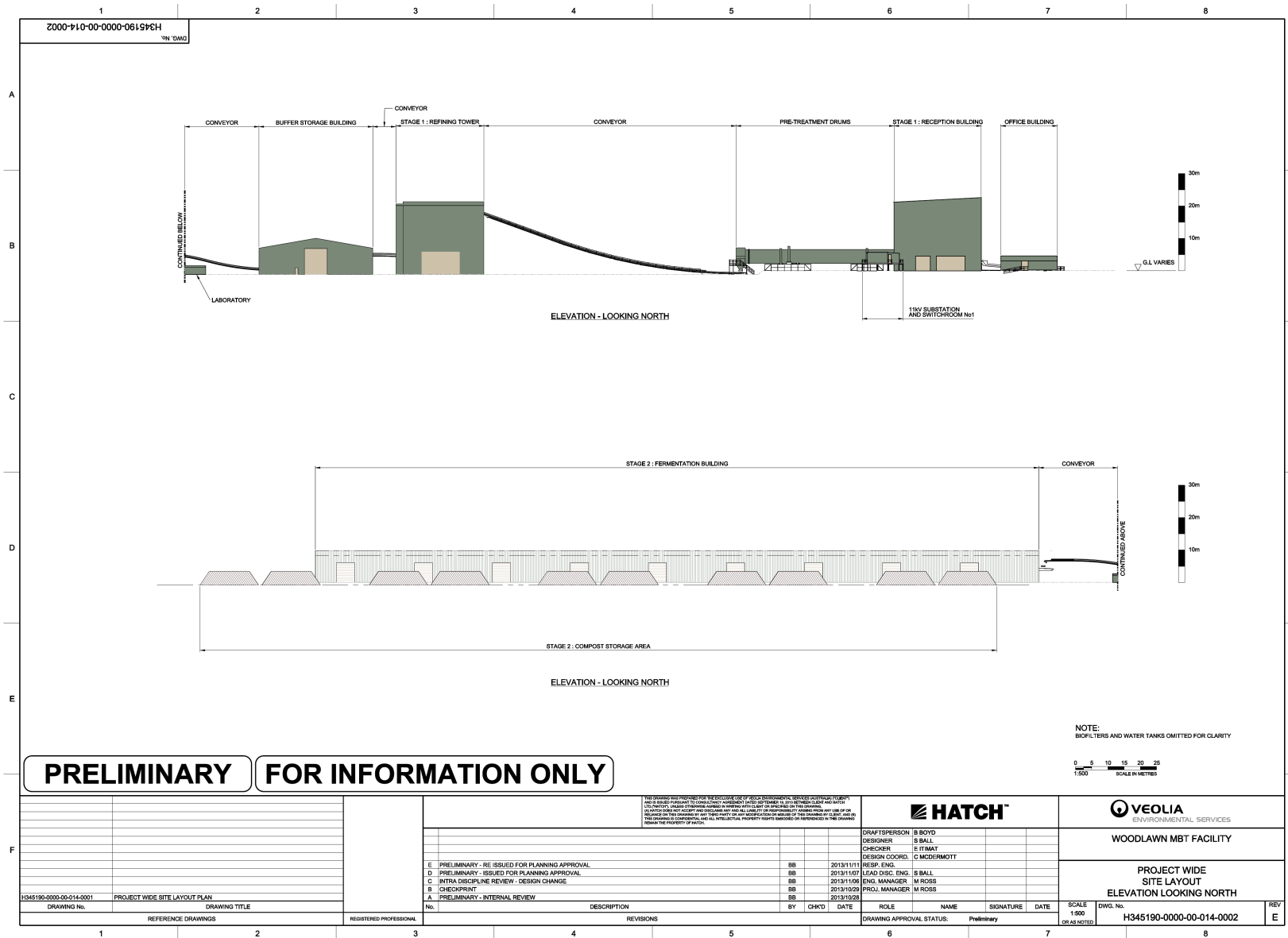
- (a) be approved by the Secretary prior to the commencement of construction;
- (b) detail landscaping and vegetation treatments for the project with particular attention to minimising the visibility of the project from residences and public vantage points including Collector Road; and

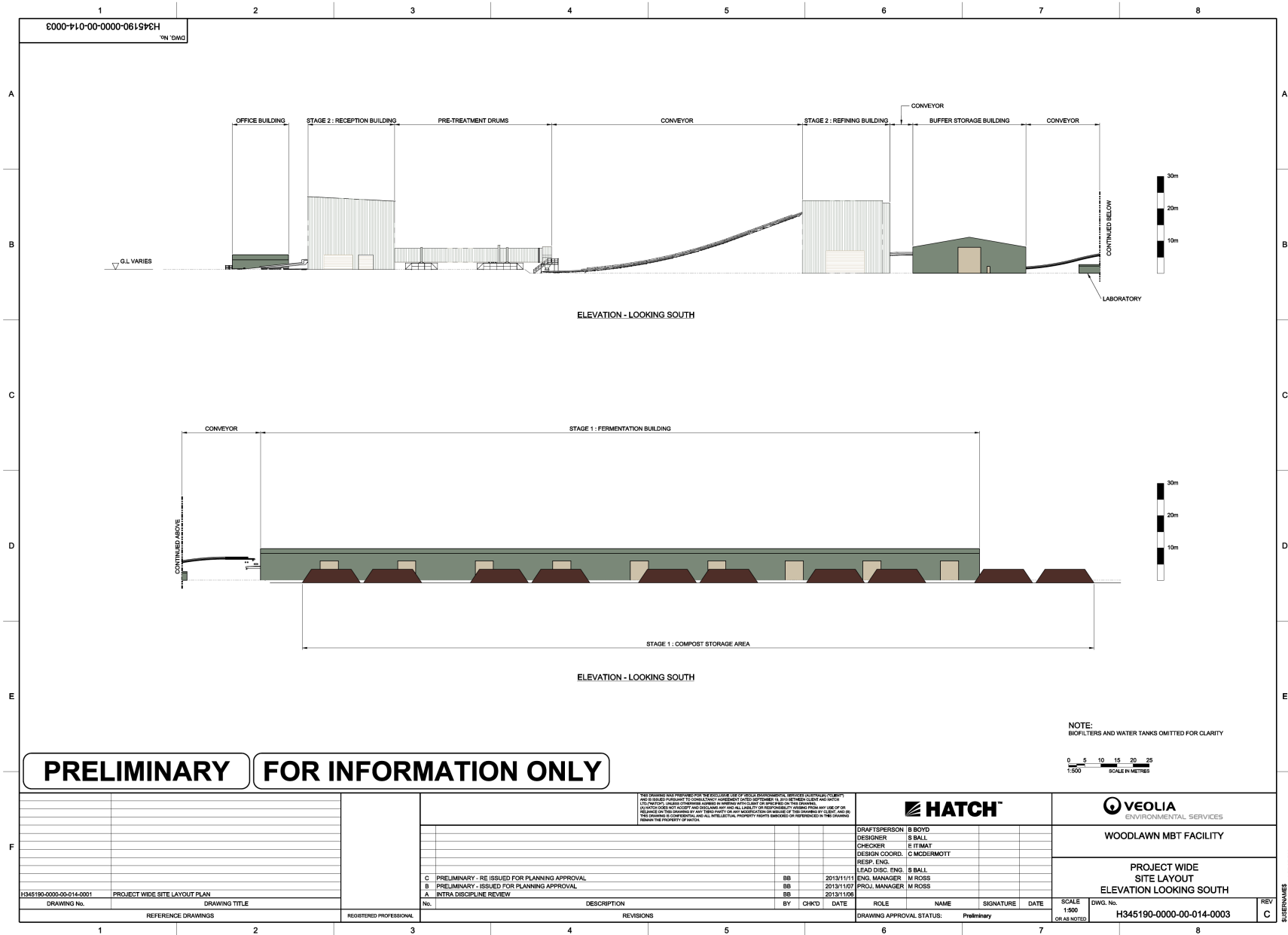
- (c) describe the on-going measures that would be implemented to maintain landscaping and vegetation on the site for the life of the project.

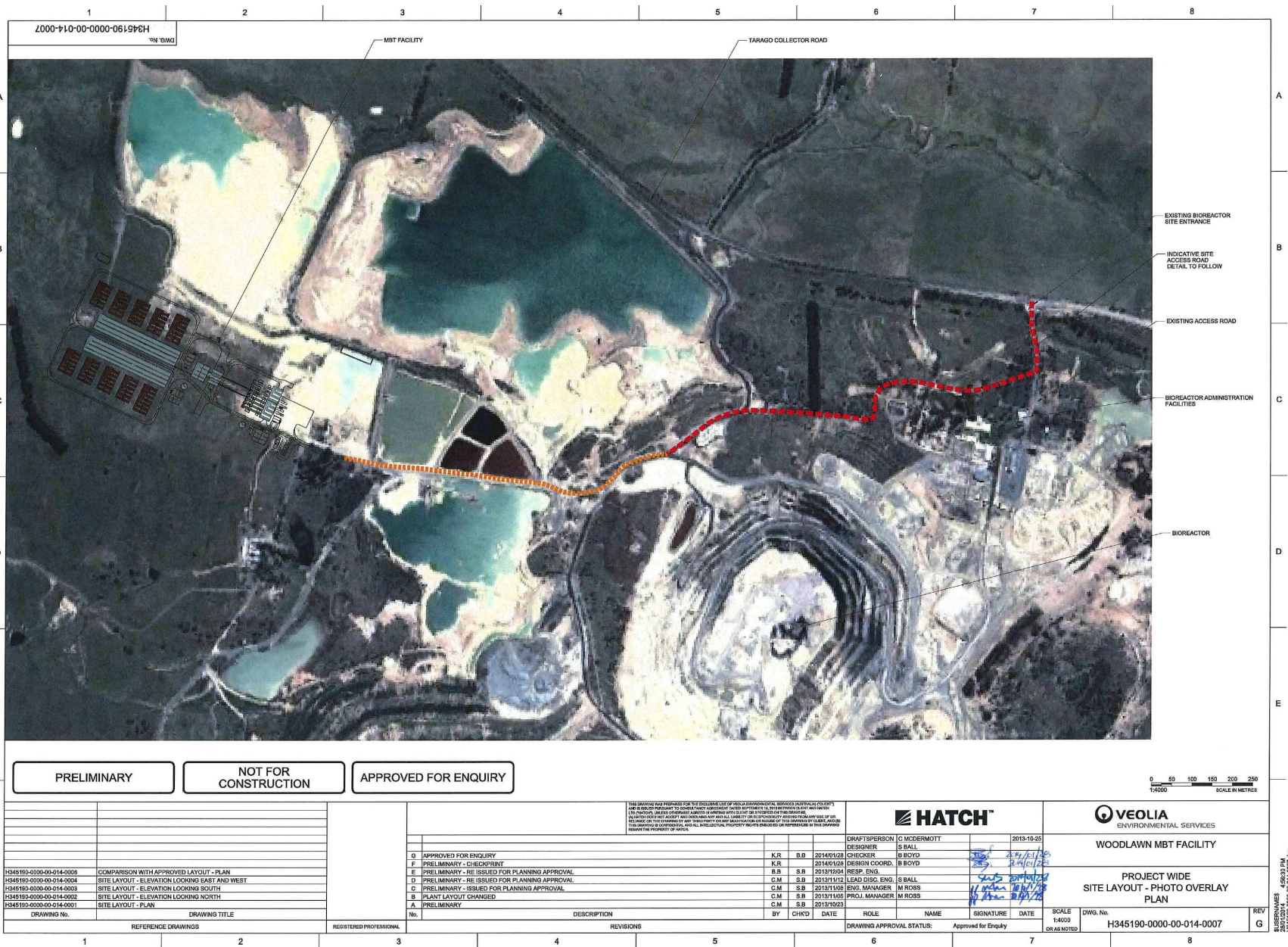
17. Replacing Appendix 1 and Appendix 2 with the following:

APPENDIX 1 – SITE PLANS









8/20/2014 1:44:07 PM
H345190-0000-00-014-0007.dgn

APPENDIX 2 – STATEMENT OF COMMITMENTS

Reference No.	Environmental and Operational Controls
Waste Received at the Development	
1	The Development will only receive Municipal Solid Waste, commercial waste and green waste. Each container of waste delivered to the Development will be weighed, recorded and tipped into the Development's receival area where it will be visually inspected prior to being processed in the MBT facility. Any material that is not suitable for recycling, composting or other reuse will be separated from the remainder of the waste stream and stored for subsequent disposal at a suitably approved waste handling facility. The remaining material that is not recycled, composted or otherwise reused will be transported to the Woodlawn Bioreactor for disposal.
2	Veolia will maintain a permit issued by Department of Primary Industries (DPI), under Section 16 of the Plant Disease Act 1924, allowing the movement of solid waste (including source segregated green waste) from Sydney to the Woodlawn Bioreactor and the Development and the use of compost for mine rehabilitation.
3	Compost derived from mix waste will be produced to satisfy the physical and chemical contaminant thresholds specified in the General and Site Specific Resource Recovery Exemptions, in accordance with Clause 51 and 51A of the POEO (Waste) Regulations for the application of any compost output from the Development to land. Veolia has an agreement with TriAusMin regarding the use of compost for mine site rehabilitation and will continue to work with TriAusMin to ensure relevant amendments are made to the Woodlawn Mining Operations Plan (MOP) with respect to the use of compost for mine rehabilitation.
4	Residual from the Development will not be used as daily cover in the Woodlawn Bioreactor without prior approval from the EPA.
5	Alternative fuel derived from the Development will not be used at any offsite facility without prior approval from the EPA.
6	Disposal of material from the Development in the Woodlawn Bioreactor will be carried out in accordance with the consent for the Woodlawn Bioreactor.
Soil and Water Management	
7	Prior to commencement of construction, sediment and erosion controls as set out in Section 6.2.1.3 of the original EA (Unwelt, 2006) will be implemented.
8	Clean water diversion drains will be constructed to achieve the revised drainage requirements for the Development, as shown in Figure 2.1.2 of the modification EA (Veolia, 2013).
9	A stormwater dam will be constructed to accept runoff from the 1 in 100 year 24 hour duration Average Recurrence Interval event, as shown in Figure 2.1.2 of the modification EA (Veolia, 2013).
10	A single leachate aeration pond will be sized to store run off from a storm of magnitude 1 in 10 year Average Recurrence Interval (ARI) 24-hour duration rainfall event, located as shown in Figure 2.1.2 of the modification EA (Veolia, 2013).
Site Rehabilitation after Decommissioning	
11	At the end of the life of the operation, infrastructure will be removed from the site and the site will be regraded and planted with pasture species unless an alternate and approved use is identified.
Traffic and Road Management	
12	The Development would utilise the existing Woodlawn Bioreactor site access intersection on Collector Road, as shown in Figure 2.1.1 of the modification EA (Veolia, 2013).
Reporting	
13	Veolia will prepare and circulate an annual community newsletter providing an overview of the Development's operation and the Company's performance against its statement of commitments.
Air Quality	

14	<p>Veolia will incorporate the following odour control measures within the Development:</p> <ul style="list-style-type: none"> ▪ prepare enclosed processing areas ▪ Odour control system (biofilters) <p>Additional odour control measures shall also include:</p> <ul style="list-style-type: none"> ▪ automated aeration technology for accelerating the process of fermentation to achieve stability of organic matter; and ▪ technology for enhancing fermentation and treating odour emissions from compost with the use of a cover system.
Greenhouse Gas	
15	<p>Where practical, Veolia shall utilise the following control measures to minimise greenhouse gas emissions:</p> <ul style="list-style-type: none"> ▪ Regularly servicing all stationary plant and machinery within the Development. ▪ Purchasing green power to offset electricity usage for the site. ▪ Using sensor lighting and high efficiency lighting. ▪ Turning off vehicles and/or plant and machinery when not in use. ▪ Using B5 and E10 fuels within onsite vehicles and B5 blended diesel for stationary plant and equipment.
Visual Amenity	
16	<p>Veolia shall endeavour to maintain the visual amenity of the local area with the following design measures:</p> <ul style="list-style-type: none"> ▪ Construction of new buildings using material and colours that complement the surrounding rural landscape. ▪ Installation of external lighting associated with the Development that will not create nuisance to surrounding receivers and/or roadways and which complies with 'Control of Obstructive Effects of Outdoor Lighting' in accordance with the Project Approval visual amenity condition.