

Communities NSW - Sport and Recreation

Version: 2 - Updated September 2010



Update annually prior to the bushfire season

Contact	Number
Report All Fires / Emergencies	Dial 000 or 112 (mobile)
Southern Highlands Regional Shooting Complex site contact	(0411) 566 941
Communities NSW Sport and Recreation	(02) 9006 3840 (bh) 0402 038 344 (ah)
Utilities - Sydney Water	13 20 90
- TransGrid	(02) 6226 9666
Emergency Services (Fire, Police, Ambulance)	Dial 000 or 112 (mobile)
NSW Rural Fire Service (Wingecarribee)	(02) 4871 2666
NSW Rural Fire Service (Bowral)	(02) 4862 9299
Bowral and District Hospital	(02) 4861 0200
Bushfire Information - NSW Rural Fire Service	1800 679 737
RTA Road Closure Information	132 701
NSW National Parks - Duty Officer	0419 428 054

Refer to Section 1 of the Bushfire Management Plan

The facility is located on Wattle Ridge Road approximately 5 km north-west of the village of Hill Top and 15 km north of Mittagong.

The Southern Highlands Regional Shooting Complex is a recreational shooting complex covering approximately 1036 ha, consisting of a 136 ha Special Activity Zone and a 900 ha Conservation Zone. The facility comprises eastern (800 m long rifle range, clubhouse, toilet facilities and informal car parking) and western (500 m range, pistol range, carpark) sections.

Season: The statutory bushfire danger period for the Southern Highlands Regional Shooting Complex is from 1 October to 31 March annually. In drought affected seasons fire danger may commence earlier (as determined by the Commissioner NSW RFS), with fire potential across the landscape increasing once grasses are more than 60 - 70% cured

equipment use, result from lightning strike or be caused by arson or accidental human ignition

the north / north-west under very high to Catastrophic Fire Danger. The site is located amongst large areas of bushland and there is significant risk that fire may enter the property from surrounding bushland

Dry sclerophyll
(shrubby understorey): These areas can support fast moving grassfires, and crowning and spotting may occur in shrubby or denser woodland patches where elevated and near surface fuels exist

to the presence of moist fuels. Exclude fire from rainforest areas where possible

Fire Recovery See Sections 5 and 6 of the BMP

Monitoring & Reporting:

What?	How?	When?
<i>Bushfire Plan</i>	✓ Display in a visible location and become familiar with this Property Bushfire Management Plan	Before / during bushfire season
<i>Pre-season fire refresher</i>	✓ Hold an annual refresher day and drills prior to the bushfire season about what to do in the event of a bushfire. The local Rural Fire Service may be able to assist	Before the bushfire season
<i>Grass slashing</i>	✓ Keep grasses mown in existing slashed areas (<i>Asset Protection and Strategic Fire Advantage Zones</i>), and maintain grass cover to less than 10 cm.	Before / during bushfire season
<i>Use trails wisely</i>	✓ Maintain and protect trail surfaces by restricting trail use during wet conditions	Throughout the year
<i>Bushfire mitigation works</i>	✓ The Club site supervisor is to ensure that works described in the BUSHFIRE MITIGATION WORKS SCHEDULE have been conducted	Before the bushfire season
<i>Asset maintenance and bushfire preparations</i>	✓ Annually the Club site supervisor is to maintain and prepare club buildings and surrounds for bushfires (clearing gutters, sealing gaps, trimming vegetation within the APZ). This could be undertaken as part a club working bee, and coincide with the pre-season refresher day. (See Sections One, Two and Appendix B of the Bushfire Management Plan for specifications)	Prior to the bushfire season and maintained during the season.
<i>Contact details</i>	✓ Check COMMUNICATION DETAILS and update on this Property Bushfire Management Plan	Before the bushfire season
<i>Site safety inductions</i>	<p>✓ The site supervisor ensures that all site users and visitors are inducted on arrival and understand safety requirements and response procedures (BUSHFIRE RESPONSE STRATEGY, FLOW CHART and FIRE PREPAREDNESS STRATEGY sections)</p> <p>✓ Site safety induction for contractors and persons undertaking work on the site is to include information specific to Hot Works Permits. See the BUSHFIRE AWARENESS PROGRAM for further details</p>	Prior to site use
<i>Site comms</i>	✓ The site supervisor must have a portable radio or NextG Mobile phone and can contact site users	During site use
<i>Contact with Wingecambee RFS</i>	✓ Site supervisor contacts the Wingecambee Rural Fire Service to determine the Fire Danger Rating for the day/weekend of operation and to advise of the expected timing and duration of site access, including number of users. See the BUSHFIRE AWARENESS PROGRAM for further details	Prior to opening the Complex (during bushfire season only)
<i>Fire awareness and warnings</i>	✓ The site supervisor must listen to ABC Local Radio Illawarra 97.3 throughout the day for bushfire warnings and changes to fire danger. See the BUSHFIRE AWARENESS PROGRAM for further details.	During site use (during the bushfire season only)
<i>Site use restrictions</i>	✓ The Club site supervisor must implement all restrictions listed in the FIRE PREPAREDNESS STRATEGY and is to remain observant for any smoke/ flames in the area	During site use
<i>Bushfire notification and response</i>	✓ If smoke or flames are observed, the Club site supervisor is to stop activities in the area and notify all site users and fire authority, and ensure that all site users follow emergency standard instructions during a bushfire. See BUSHFIRE RESOURCE INFORMATION and FLOW CHART	During site use

Refer to Section 4 of the Bushfire Management Plan

Incident Control	Control functions
------------------	-------------------

Bush / grass fires may be attended to by NSW Rural Fire Service. Note a response by a fire authority cannot always be expected, particularly on days of elevated fire danger with a high level of fire activity.

the external fire authority

Assembly Area. See FLOW CHART

Intersection of West Road Fire Trail, Hill Top NSW. Lat/Long (decimal): -34.516391 S 150.456090E - MGA
266100 E 6199750N

Do not attempt to evacuate at the last minute, evacuate early if possible

Follow the advice of the Club site supervisor or the responding fire authority

If fire is close it may be safer to seek shelter within the Clubhouse buildings until the fire passes

Roads are extremely dangerous places to be caught during a fire. There are more than 2 km of road between the Southern Highlands Regional Shooting Complex and Hill Top

Stay clam, do not panic

Vehicle and Machinery Access If possible, trails should not be used in wet conditions. Vehicles and machinery can damage wet soils and result in expensive damage to trail surfaces. Ensure plant is clean (seeds / dirt) prior to use on site.

Refer to Section 3 of the Bushfire Management Plan

Site Safety Induction: A Site Safety Induction is to be conducted for all site staff, visitors and contractors at sign-on to the Complex. The Induction is to include procedures for bushfire response (**BUSHFIRE RESPONSE STRATEGY, FLOW CHART and FIRE PREPAREDNESS STRATEGY** sections).

Notifications The Burn Contractor or Fire Authority is responsible for notifications prior to the commencement of burning.

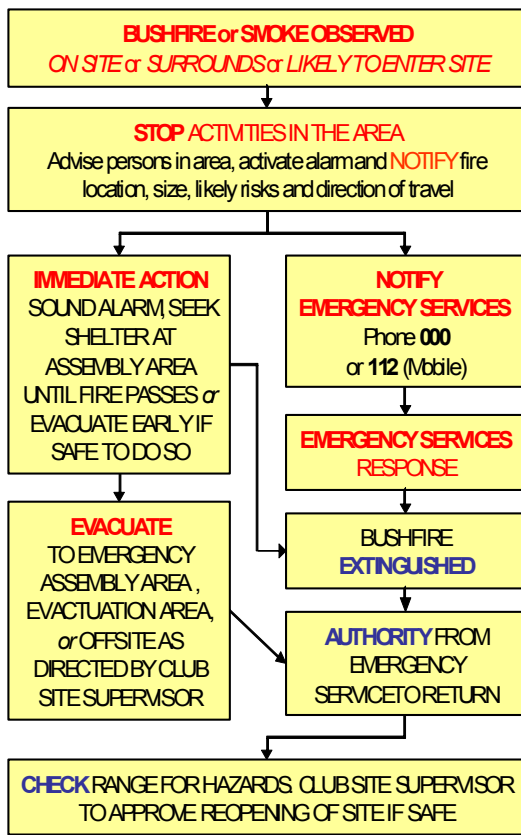
Neighbour Liaison Notifications, neighbour liaison and reporting of prescribed burns are to be carried out in accordance with Fire Authority procedures. Liaison should include site users, neighbours, NSW fire authorities (including '000'), Sydney Water and TransGrid. See the **COMMUNICATION DETAILS** table for contact phone numbers.

Pre-Season

reporting and emergency assembly/evacuation procedures before the commencement of the fire season. Procedures are readily available and may be sourced from existing community awareness programs such as those provided by the RFS.

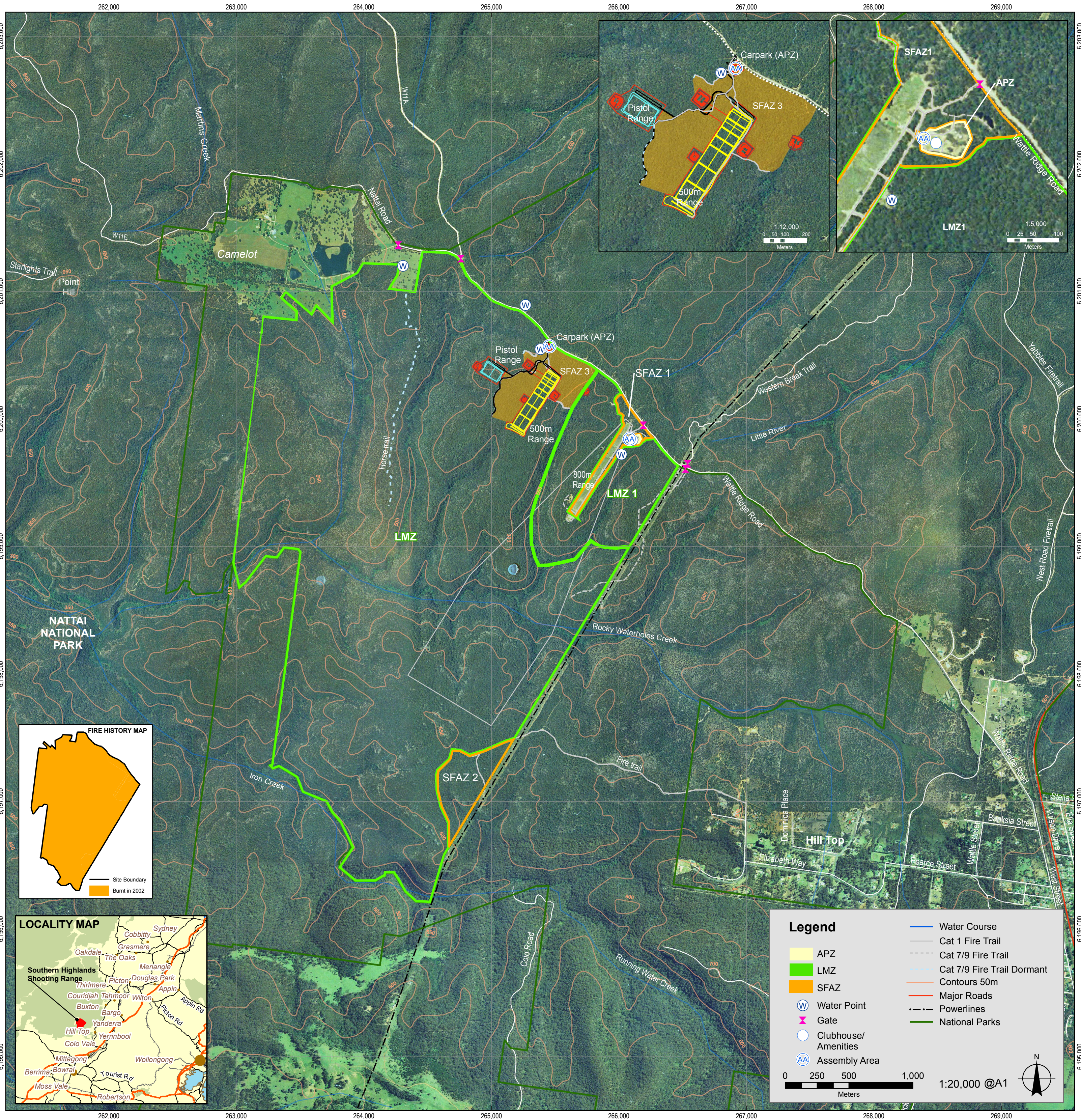
the **BUSHFIRE MITIGATION WORKS SCHEDULE** (below) have been undertaken prior to the commencement of the fire season.

Notification: The Club site supervisor must contact Wingecambee RFS and seek advice on the Fire Danger Rating prior to opening the Complex. The Club site supervisor must listen to ABC Local Radio Illawarra 97.3 throughout the day for fire warnings. The Club site supervisor must ensure that *Restrictions* listed in the FIRE **PREPAREDNESS STRATEGY** for Low, Moderate and High *Fire Danger Ratings* (below) are relayed to and followed by all persons on the site. If any uncertainty exists regarding forecast conditions, the Club site supervisor is to contact and seek advice from Wingecambee Rural Fire Service.



Refer to Section 2 of the Bushfire Management Plan

Works	Fire Management Zone	Standard	Timing	Delivery	Procedures	Monitoring
Asset maintenance and seasonal bushfire preparedness	Asset Protection Zone (APZ) <i>Clubhouse and amenities</i>	Refer to Sections 1, 2 and Appendix B of the BMP	Annually prior to fire season (September)	Southern Highlands Shooting Club	Inspect roof gutters, external vent/opening covers, fly screens, external combustible building materials and gardens/fire hazards adjacent to buildings	Communities NSW Sport and Recreation
Grass slashing	APZ and Strategic Fire Advantage Zone 1 (SFAZ) 1 <i>Shooting range and existing mown areas</i>	Low cut grass <10cm Refer to Section 2 and Appendix B of the BMP	Throughout Bushfire Season	Southern Highlands Shooting Club	Slashing when grass is approaching 60% cured, maintain slashing regime to keep grass cover at less than 10 cm	Communities NSW Sport and Recreation
Fire trail maintenance and slashing	<i>Road and trail network – all areas</i>	NSW RFS Fire Trail standards Refer to Section 1 and 2 and Appendix C of the BMP	Annually prior to fire season (September)	Communities NSW Sport and Recreation	Conduct pre-fire season assessment of roads and fire trails, identify areas untrafficable to firefighting vehicles Repair or identify detour routes Slash trails to maintain access throughout the fire season	Communities NSW Sport and Recreation
Hazard reduction prescribed burning	(SFAZ) and Land Management Zones (LMZ) <i>Surrounding the shooting ranges, clubhouse and amenities, and south of Rocky Waterholes Ck</i>	Fuel Hazard Rating: Surface Fuels ≤ LOW Near Surface Fuels ≤ LOW Elevated Fuels ≤ MODERATE Bark Fuels ≤ HIGH See Sections 1 and 2 of the BMP	2011 – SFAZ 1 & 2 2012 – LMZ 1 2013 – SFAZ 3	Burn Contractor	Prepare hazard reduction burn plans 12 months before scheduled month/season Engage resources for burning 2 months before scheduled burn period Mobilise identified burning resources as scheduled in accordance with burn plan	Communities NSW Sport and Recreation / Burn Contractor
Contractor Hot Works	<i>All areas</i>	Hot Works Permit procedures	Throughout Bushfire Season	Southern Highlands Shooting Club	Follow procedures for working with a Hot Works Permit	Communities NSW Sport and Recreation



Fire Danger Rating	Working Restrictions (All Areas)
Outside Fire Season – See the BUSHFIRE MITIGATION WORKS SCHEDULE and Section 2 of the Bushfire Management Plan	
During Fire Season (01 October to 31 March) Restrictions below	
Low [FDI 1-4]	No specific restrictions in place for staff, visitors or contractors. Contractor works must be consistent with instructions (including Hot Works Permit conditions).
Moderate [FDI 5-11]	<u><i>As for Low-Moderate plus:</i></u> All staff, visitors or contractors using the Complex must be briefed on appropriate fire prevention measures and on what to do in a fire. Advice is to be made available at sign-on. The Site Supervisor should have an emergency contact system in place such as a portable radio or NextG Mobile (as there is little digital mobile coverage on the property). The Site Supervisor must listen to ABC Local Radio Illawarra 97.3 for fire warnings.
High [FDI 12-24]	<u><i>As for High plus:</i></u> Activities that might cause accidental ignitions (e.g. slashing, external welding) should be suspended. Non essential access to bush/land should be limited and consideration must be given to closing the site. The Site Supervisor must be ready to evacuate the Complex if required or advised by the NSW RFS / NSW Police. Site users must be ready to follow higher level restrictions where fire danger increases above forecast and must be ready to evacuate if safe. Users must maintain contact with the Site Supervisor (i.e. don't leave the Ranges or buildings).
Very High [FDI 25-49]	<u><i>As for High plus:</i></u> Activities that might cause accidental ignitions (e.g. slashing, external welding) should be suspended. Non essential access to bush/land should be limited and consideration must be given to closing the site. The Site Supervisor must be ready to evacuate the Complex if required or advised by the NSW RFS / NSW Police. Site users must be ready to follow higher level restrictions where fire danger increases above forecast and must be ready to evacuate if safe. Users must maintain contact with the Site Supervisor (i.e. don't leave the Ranges or buildings).
Severe [FDI 50-74] Extreme [FDI 75-99] Catastrophic [FDI 100+]	Total Fire Ban declared. The Ranges must be closed and any activities that might cause accidental ignitions must be suspended.