

ANNEXURE 1

**Director-General Requirements (DGRs)
for the preparation of this EA**

Stephen Richardson

From: Deana Burn <Deana.Burn@planning.nsw.gov.au>
Sent: Tuesday, 6 October 2015 9:27 AM
To: Stephen Richardson; Christopher Ritchie
Cc: Brian Hanley; John Studdert; Aaron Ticehurst
Subject: RE: Proposed Modification Application to MP06-0228, Shoalhaven Starches Expansion Project, Modification to Approved Packing Plant, Bolong Road, Bomaderry

Hi Stephen

Please find below environmental assessment (EA) requirements for modification of the packing plant. I understand that the modification involves:

- increasing the floor area of the packing plant from 3050m² to 6200m² (excluding awnings)
- constructing 5 storage silos adjacent to the packing plant;
- relocating the packing plant within the previously approved lots (Lot 16 DP 1121337 and Lot 2 DP 538289);
- constructing an additional rail spur line adjacent to the packing plant to accommodate the increase in dry product transported from the site; and
- changing the location and alignment of the pipe bridge across Bolong Road.

The scoping document dated 21 September identifies the key issues associated with the modification. The Department confirms that it requires the EA for the modification to include:

Modification Description – a clear description of the modification and staging of works (approved and proposed). Clearly explain if the previously approved elements will also be constructed at the same time as the modification. Include clear figures.

Noise - An assessment in accordance with the EPA's Industrial Noise Policy and Interim Construction Noise Guideline, including a description of the proposed mitigation measures. A review of the modification against the existing EPL conditions and any noise reduction programs.

Flooding - A flood impact assessment including impacts of the increased building footprint on flood storage, flow velocity and flood depths both on and off the site, including the need for any mitigation and/or compensation measures.

Traffic (road and rail) - Assessment of road and rail traffic impacts including type and number of movements compared with existing and approved development. Details of how the modification meets the requirements of the Rail Safety National Law (NSW), including accreditation for the scope of works and development of appropriate safety interfaces if required.

Air & Odour - An assessment in accordance with the EPA's Approved Methods for the Modelling and Assessment of Air Pollutants in NSW, including a comparison with measured impacts (odour audits) and approved impacts.

Visual - An assessment of the visual impacts of the increased building footprint, silos and additional rail spur line, including any changes to approved heights, scale and lighting as viewed from key vantage

points. Include details of proposed building materials, textures and colours, including photomontages to show the changes proposed by the modification.

Contamination – a Stage 2 contamination assessment to identify the nature and extent of contamination on the packing plant site and measures to remediate the areas identified as impacted by hydrocarbon and asbestos contamination on the packing plant site. The existing project approval requires a site audit statement to validate the remediation. Assessment/management measures are also required for groundwater which was identified as impacted by zinc above relevant guidelines, on the packing plant site.

Hazards - Preparation of a Preliminary Hazard Analysis in accordance with the Department's HIPAP 6.

Consultation - with neighbouring landowners, Council, EPA, RMS, OEH, DPI, NSW Transport and Office of the National Rail Safety Regulator.

Please give me a call if you have any questions.

Regards,
Deana.

From: Stephen Richardson [mailto:Steve@cowmanstoddart.com.au]

Sent: Monday, 21 September 2015 3:58 PM

To: Deana Burn; Christopher Ritchie

Cc: Brian Hanley; John Studdert; Aaron Ticehurst

Subject: Proposed Modification Application to MP06-0228, Shoalhaven Starches Expansion Project, Modification to Approved Packing Plant, Bolong Road, Bomaderry

Dear Deana & Chris,

I understand that you have been in discussions with Brian Hanley in which the above modification proposal has been discussed.

Shoalhaven Starches intend to undertake modifications to the approved Packing Plant . The proposal involves retaining the proposed approved Packing Plant in the general location as originally approved on Lot 16 DP 1121337 and Lot 2 DP 538289 Bolong Road and Railway Street Bomaderry. Shoalhaven Starches however will seek to modify the size and siting of the proposed Packing Plant on this previously approved site. It will also be proposed to provide an additional rail spur line on the Packing Plant site to that which as originally approved; and to slightly change the location and alignment of the Bolong Road bridge crossing that will contain pipework that will service the proposed modified Packing Plant..

Attached is a brief scoping submission that I have prepared on Shoalhaven Starches behalf, which outlines the proposed modification to the above approved project, and details issues that such a proposal will raise and which should be addressed in any Modification Application. It is envisaged that such will assist the Department in framing any requirements that it may have for this Modification Application submission.

The attached submission is therefore submitted seeking the Department's requirements for the Environmental Assessment for this project.

If you require any further clarification in connection with this matter please do not hesitate to contact me.

Regards

Stephen Richardson
Cowman Stoddart Pty Ltd
PO BOX 738 NOWRA NSW 2541

T 02 4423 6198

T 02 4423 6199

F 02 4423 1569

www.cowmanstoddart.com.au

steve@cowmanstoddart.com.au

This message is intended for the addressee named and may contain confidential/privileged information. If you are not the intended recipient, please delete it and notify the sender.

Views expressed in this message are those of the individual sender, and are not necessarily the views of the Department.

You should scan any attached files for viruses.

Stephen Richardson

From: Deana Burn <Deana.Burn@planning.nsw.gov.au>
Sent: Tuesday, 27 October 2015 3:22 PM
To: John Studdert; Stephen Richardson; Christopher Ritchie
Cc: Brian Hanley; Aaron Ticehurst
Subject: RE: Proposed Modification Application to MP06-0228, Shoalhaven Starches Expansion Project, Modification to Approved Packing Plant, Bolong Road, Bomaderry

Hi John

I have reviewed the information provided and agree that the Phase 2 contamination assessment can be provided post determination.

Can you please incorporate the information provided in your email below into the EA for the modification so that it is clear that the modified packing plant will not have an impact on the area of identified contamination. It would also be helpful to discuss the proposed timing for construction of the approved components, such as the container storage area, as this is adjacent to borehole CTP 28. So, include a statement or mitigation measure that the Phase 2 contamination assessment would be undertaken before any works commence on the approved or modified components.

Regards,
Deana.

From: John Studdert [mailto:John.Studdert@manildra.com.au]
Sent: Thursday, 15 October 2015 5:19 PM
To: Deana Burn; Stephen Richardson; Christopher Ritchie
Cc: Brian Hanley; Aaron Ticehurst
Subject: RE: Proposed Modification Application to MP06-0228, Shoalhaven Starches Expansion Project, Modification to Approved Packing Plant, Bolong Road, Bomaderry

Hi Deana,

As discussed during our meeting on Tuesday, please see attached information in relation to the contamination assessment conducted on the proposed packing plant site.

The location of the detected asbestos & petroleum hydrocarbons (borehole CTP28) is situated approximately 42 meters west of the proposed packing plant footprint.

We request you consider the need for a stage 2 contamination assessment for the modification to the packing plant be completed after determination of the application.

Regards,
John

From: Deana Burn [mailto:Deana.Burn@planning.nsw.gov.au]
Sent: Wednesday, 7 October 2015 4:49 PM
To: Stephen Richardson <Steve@cowmanstoddart.com.au>; Christopher Ritchie <Chris.Ritchie@planning.nsw.gov.au>
Cc: Brian Hanley <brian.hanley@manildra.com.au>; John Studdert <John.Studdert@manildra.com.au>; Aaron Ticehurst <aaron.ticehurst@manildra.com.au>
Subject: Re: Proposed Modification Application to MP06-0228, Shoalhaven Starches Expansion Project, Modification to Approved Packing Plant, Bolong Road, Bomaderry

Hi Stephen

The modification is significant in terms of the increase in size of the packing plant and the additional rail spur line. It is better to do the assessment up front, rather than defer it to a later stage, particularly when the issue has been identified as a recommendation of an earlier study. The study noted that the packing plant area contained asbestos and that it presents a potential health risk during redevelopment, hence the recommendation for further Stage 2 assessment. Therefore, a Stage 2 contamination assessment for the modification is still required.

Regards,
Deana.

From: Stephen Richardson <Steve@cowmanstoddart.com.au>
Sent: Wednesday, 7 October 2015 16:21
To: Deana Burn; Christopher Ritchie
Cc: Brian Hanley; John Studdert; Aaron Ticehurst
Subject: RE: Proposed Modification Application to MP06-0228, Shoalhaven Starches Expansion Project, Modification to Approved Packing Plant, Bolong Road, Bomaderry

Dear Deana,

Thank you for your email below with the requirements for the Packing Plant modification.

I note that you indicate that a stage 2 contamination assessment should be undertaken in relation to this modification application. Whilst it is acknowledged that the original site contamination assessment identified the need for further assessment and remediation with respect to contamination, this recommendation would still apply regardless of whether the proposal is modified. In other words the modification application should not trigger the stage 2 assessment – rather this should be undertaken prior to works commencing on the site and possibly prior to issue of a CC for the works. Is it therefore necessary that such an assessment be required as part of this modification application?

Regards

Stephen Richardson
Cowman Stoddart Pty Ltd
PO BOX 738 NOWRA NSW 2541
T 02 4423 6198
T 02 4423 6199
F 02 4423 1569
www.cowmanstoddart.com.au
steve@cowmanstoddart.com.au

From: Deana Burn [<mailto:Deana.Burn@planning.nsw.gov.au>]
Sent: Tuesday, 6 October 2015 9:27 AM
To: Stephen Richardson <Steve@cowmanstoddart.com.au>; Christopher Ritchie <Chris.Ritchie@planning.nsw.gov.au>
Cc: Brian Hanley <brian.hanley@manildra.com.au>; John Studdert <John.Studdert@manildra.com.au>; Aaron Ticehurst <aaron.ticehurst@manildra.com.au>
Subject: RE: Proposed Modification Application to MP06-0228, Shoalhaven Starches Expansion Project, Modification to Approved Packing Plant, Bolong Road, Bomaderry

Hi Stephen

ANNEXURE 2

**Letter to Landholders
and
Relevant Government Departments/Agencies**

**prepared by
Manildra Group**



100% Australian Owned

MANILDRA GROUP

Postal Address:
P.O. Box 123, Nowra
N.S.W. Australia 2541
Telephone: (02) 4423 8200
Facsimile: (02) 4421 7760

SHOALHAVEN MILLING COMPANY - MANILDRA FLOUR MILLS PTY. LTD. - MANILDRA STARCHES PTY. LTD. - MANILDRA SUGARS
SHOALHAVEN STARCHES PTY. LTD. - TASMAN STARCHES PTY. LTD. - MANILDRA STOCKFEED PTY. LIMITED
NAMOI FLOUR MILLS PTY. LIMITED - MANILDRA ENERGY AUSTRALIA PTY. LTD. - MANILDRA MILLING CORPORATION - U.S.A.

28 October, 2015

The Landowner

Dear Sir

**RE: PROPOSED MODIFICATION APPLICATION TO MP06_0228
SHOALHAVEN STARCHES EXPANSION PROJECT
MODIFICATION TO APPROVED PACKING PLANT
SHOALHAVEN STARCHES, BOLONG ROAD, BOMADERRY**

1.0 Introduction

The purpose of this submission is to advise you and seek any comments that you may have in relation to Shoalhaven Starches Pty Ltd proposal to modify the approved Packing Plant development on the northern side of Bolong Road opposite the factory site.

The Shoalhaven Starches Expansion Project (SEPP) included approval for a Packing Plant on Lot 16 DP 1121337 and Lot 2 DP 538289 on the northern side of Bolong Road with access to Railway Street, and entrance from Bolong Rd, Bomaderry. Shoalhaven Starches now propose to retain the Packing Plant on the same parcels of land as originally approved under the SSEP, but modify the size and siting of the proposed Packing Plant on this previously approved site.

It is also proposed to provide an additional rail spur line on the Packing Plant site to that which as originally approved; and to slightly change the location and alignment of the Bolong Road bridge crossing that will contain pipework which services the proposed modified Packing Plant.

Shoalhaven Starches are presently in the process of preparing an Environmental Assessment that will accompany an application to the NSW Department of Planning & Environment seeking approval for this modification proposal. In its requirements for the preparation of the Environmental Assessment the Department have requested that Shoalhaven Starches consult with relevant local, state and Commonwealth government authorities, and landowners. The purpose of this submission is to undertake consultation with you and to seek your comments in relation to this proposal in accordance with the requirements of the NSW Department of Planning & Environment.

2.0 MP06_0228 – The Approved Development

Project Approval MP06_0228 was granted by the Minister for Planning on the 28th January 2009 for the Shoalhaven Starches Expansion Project. This approval also encapsulated previous approvals for the site into one overall approval for the site (at that time).

The Shoalhaven Starches Expansion Project is a 'transitional Part 3A Project' for the purposes of Schedule 6A of the Environmental Planning & Assessment Act.

The Shoalhaven Starches Expansion Project sought to increase ethanol production at the Bomaderry plant in a staged manner from 126 million litres per year to 300 million litres per year. To accomplish the increase in ethanol production, this project required a series of plant upgrades and increase in throughput of raw materials, principally flour and grain. The Project included the following alterations and additions:

- The provision of an additional product dryer;
- Additional equipment and storage vessels for the ethanol plant including additional fermenters, additional cooling towers and molecular sieves,
- Upgrades to the Stillage Recovery Plant, including additional DDGS Dryers, Decanters, chemical storage and evaporators. This proposal also included the installation of a DDGS Pellet Plant.
- The establishment of a new packing plant, container loading area and rail spur line on the northern side of Bolong road.

3.0 The Modification Proposal

Under this Modification Application it is proposed to increase the floor area and slightly relocate the approved Packing Plant from that which was originally approved as part of the SSEP. It is also proposed to erect silos adjacent to and within the Packing Plant site to store product prior to packing that is transferred to the site from across Bolong Road. The Packing Plant will remain on the same parcels of land where it was originally approved.

Following further detailed engineering design it has become apparent that the footprint originally set aside for the proposed Packing Plant under the SSEP provided insufficient area for the plant, equipment and product storage requirements. As a result it is proposed to increase the floor area of the approved development. The approved Packing Plant under the SSEP comprised a floor area (excluding awnings) of 3050 m². The proposed modified Packing Plant will comprise a floor area (excluding awnings) of 6200 m².

The increase in footprint of the Packing Plant building has largely arisen as a result of further detailed engineering design in terms of the intended plant and machinery that will be sited within the building. A greater level of flexibility is being sought in terms of packaging with this modified proposal with a range of packing alternatives now being proposed ranging from 12.5 and 25 kg bags, bulk bag filling (1 tonne) to bulk containers for export markets. These different packaging alternatives will each necessitate different packing plant and equipment not originally envisaged with the SSEP. Furthermore the footprint of these individual packing plant will be larger than that which was originally envisaged with the SSEP. The increase in dry product is a result of the diversion of liquid starch from ethanol to dry starch and will also require additional storage area within this building compared to that originally proposed with the SSEP.

The Modification Application will also seek to provide an additional rail spur line to that which was approved as part of the SSEP on this land as well. The additional rail spur line is required to accommodate the increase in dry product that will be transported from the site in containers for export markets. In addition it is also proposed to consolidate the storage and handling of

containers on this part of the overall factory complex, thereby reducing rail movements across Bolong Road (and thereby reducing subsequent traffic impacts along Bolong Road).

It will also be proposed to slightly modify the location and re-alignment of the approved bridge crossing of Bolong Road. These adjustments to the approved Bridge crossing arise in response to the proposed relocation of the Product Dryer to the west of Abernethy's Creek and which is the subject of a separate Modification Application to the Department.

The re-alignment of the bridge crossing will also reduce energy consumption (and associated costs) by ensuring a more direct transfer route between the Product Dryer (as modified) and the Packing Plant site. Relocating the bridge crossing will also ensure that it does not need to cross Abernethy's Creek as was the case with the approved location.

The modified proposal will not result in any increase in overall production rate limits that have been imposed by past approvals. The proposal will not involve any change in the amount of raw products that will be utilised; nor will it involve in any changes in the amount of waste waters that will need to be treated and disposed.

As the Project is a 'Transitional Part 3A Project' the provisions of Section 75W of the EP & A Act continue to apply to this proposal.

Plan and elevation details of the proposed modification are attached to this submission for your consideration.

4.0 Purpose of this Submission

As outlined above Shoalhaven Starches are presently in the process of preparing an Environmental Assessment that will accompany an application to the NSW Department of Planning & Environment seeking approval for this proposal.

In its requirements for the preparation of the Environmental Assessment the Department have requested that Shoalhaven Starches consult with relevant local, state and Commonwealth government authorities, and local landowners.

The purpose of this submission therefore is to undertake consultation with you and to seek any comments you may have in relation to this proposal in accordance with the requirements of the NSW Department of Planning & Environment. If you wish to make any comments or raise any specific issues in relation to this proposal I would appreciate it if you could respond in writing to this letter by the 11th November 2015. This will enable your comments to be taken into consideration in the formulation of the Environmental Assessment that is presently being prepared in relation to this project.

In the meantime if you require any further information in relation to this matter please do not hesitate to contact me.

Yours faithfully



Ming Leung
Site Manager
Shoalhaven Starches Pty Ltd
T-4423.8200 M-0400.853.637

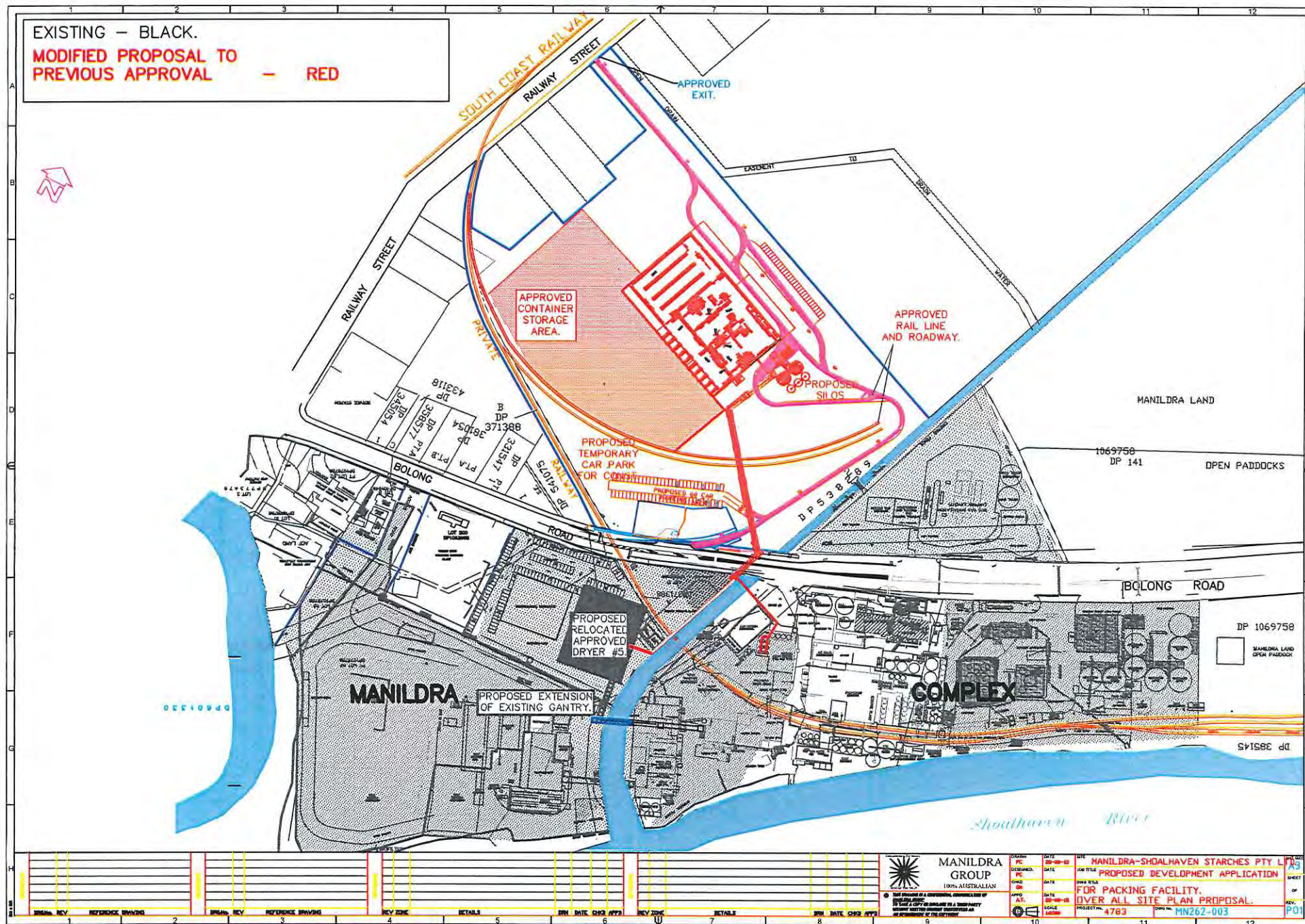
E-ming.leung@manildra.com.au

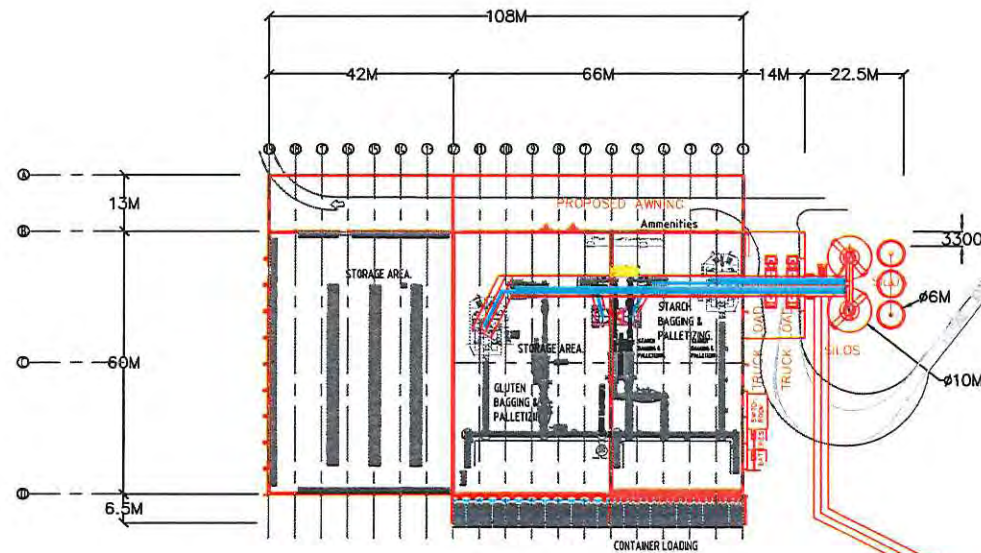
LIST OF ATTACHMENTS:

1. PROPOSED MODIFICATION FOR PACKING FACILITY OVERALL SITE PLAN
2. PROPOSED MODIFICATION FOR PACKING PLANT FACILITY BUILDING
3. Overall Site Plan 28-Oct-15

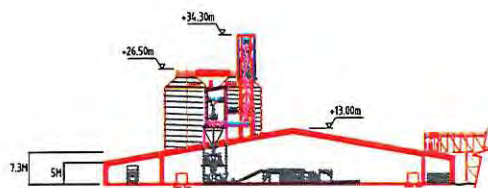
**MODIFIED PROPOSAL TO
PREVIOUS APPROVAL**

RED

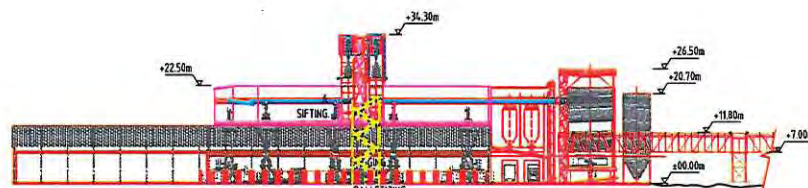




PLAN VIEW



WESTERN ELEVATION
AT BAG PACKER.



SOUTHERN ELEVATION



EASTERN ELEVATION

NO.	REV	DESCRIPTION
1		REFERENCE DRAWING
2		REFERENCE DRAWING
3		REFERENCE DRAWING

DRAWN P.C.	DATE 20-08-18	SITE MANILDRA-SHOALHAVEN STARCHES PTY LTD	SHEET NO. A3
CHECKED P.C.	DATE 20-08-18	PROJECT PROPOSED MODIFICATION APPLICATION	OF P02
APPROVED A.T.	DATE 20-08-18	SCALE 1:1250	REV P02
		PRODUCT No. 5767	DWG No. MN262-005

OVERALL SITE PLAN SHOWING ETHANOL UPGRADE FOR SHOALHAVEN STARCHES P/L JUNE 2008

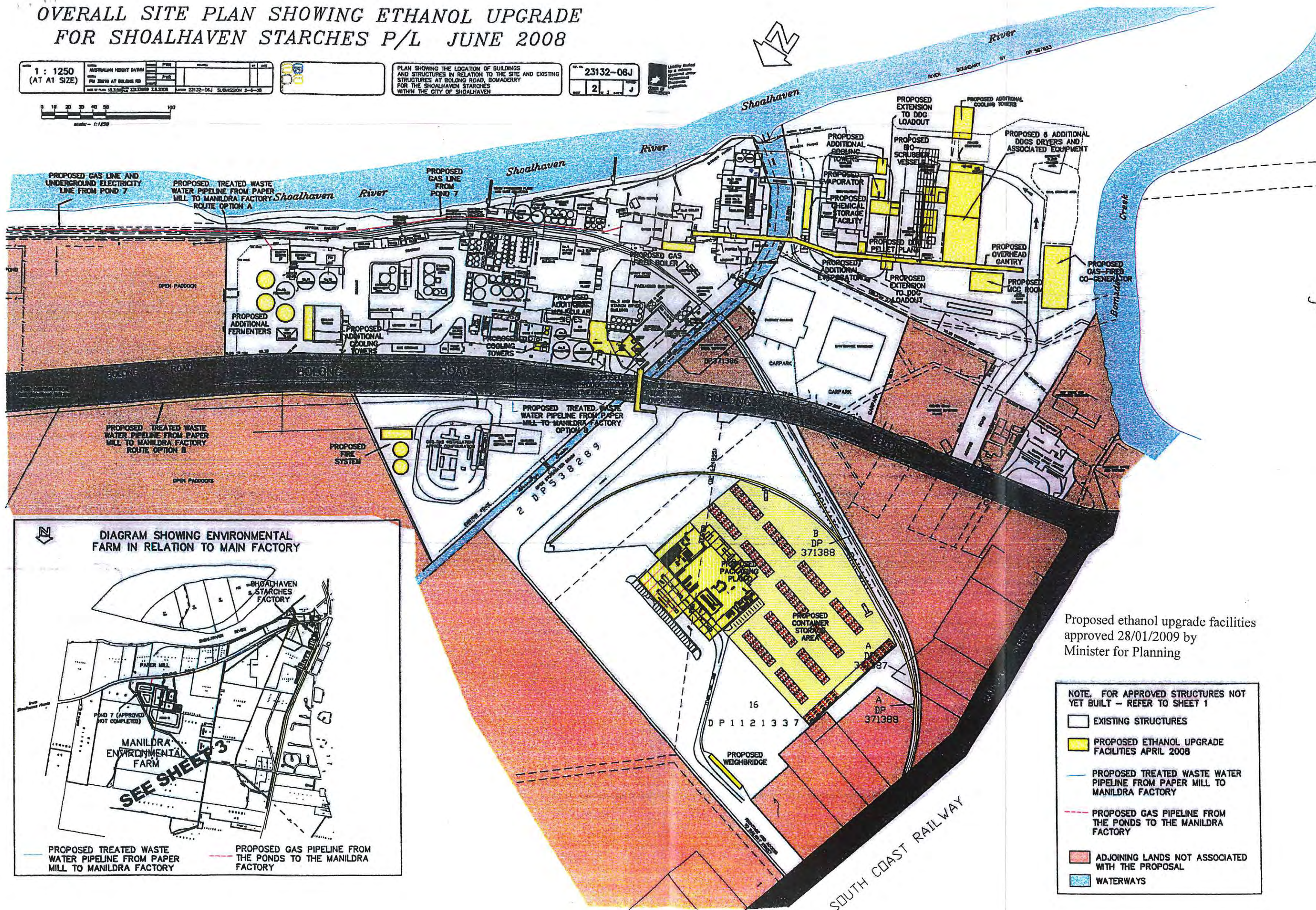
1 : 1250
(AT A1 SIZE)

Australian Height Datum
PG 2870 AT BOLDING RD
Scale of Map: 1:1250 (PG 23132-06J 2.6.2008) Submission 2-4-08



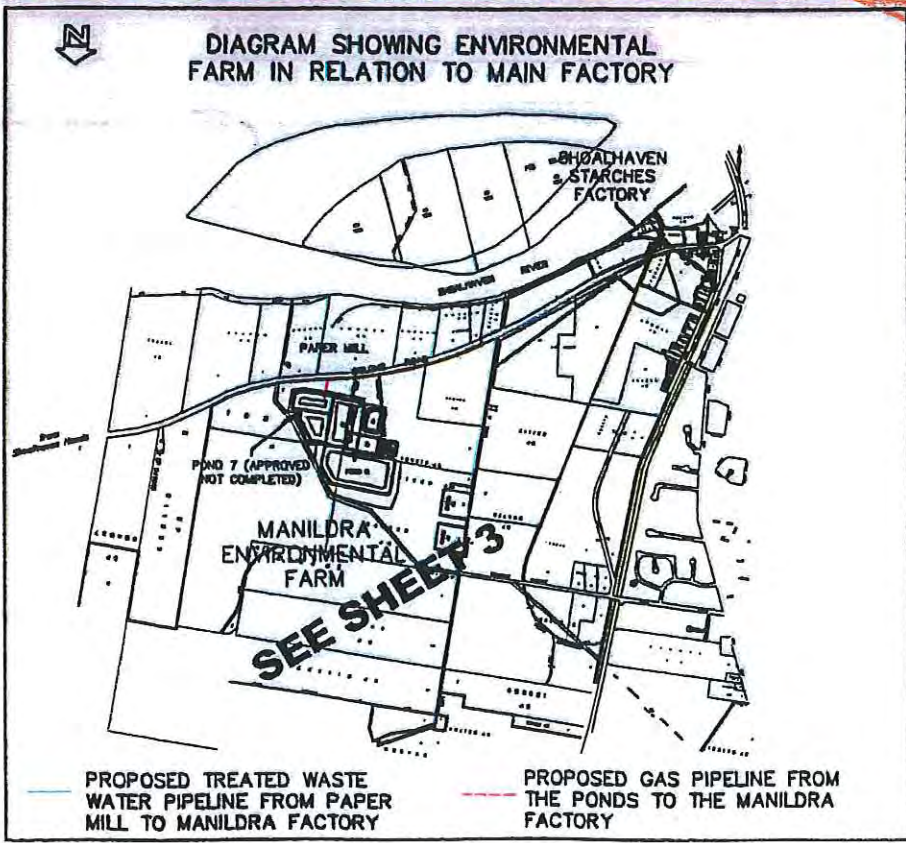
PLAN SHOWING THE LOCATION OF BUILDINGS
AND STRUCTURES IN RELATION TO THE SITE AND EXISTING
STRUCTURES AT BOLDING ROAD, BOMADERRY
FOR THE SHOALHAVEN STARCHES
WITHIN THE CITY OF SHOALHAVEN

23132-06J
2



Proposed ethanol upgrade facilities
approved 28/01/2009 by
Minister for Planning

- NOTE. FOR APPROVED STRUCTURES NOT
YET BUILT - REFER TO SHEET 1
- EXISTING STRUCTURES
 - PROPOSED ETHANOL UPGRADE
FACILITIES APRIL 2008
 - PROPOSED TREATED WASTE WATER
PIPELINE FROM PAPER MILL TO
MANILDRA FACTORY
 - PROPOSED GAS PIPELINE FROM
THE PONDS TO THE MANILDRA
FACTORY
 - ADJOINING LANDS NOT ASSOCIATED
WITH THE PROPOSAL
 - WATERWAYS



Then General Manager
Shoalhaven City Council
PO BOX 42
NOWRA NSW 2541

The Regional Manager
NSW Environment Protection Authority
PO Box 733,
Queanbeyan NSW 2620

Attention: Stefan Press

The Regional Manager
NSW Roads & Maritime Services
P.O. Box 477
Wollongong NSW 2500

The Regional Manager
NSW Office of Environment & Heritage
PO Box 513,
Wollongong NSW 2500

The Regional Manager
NSW Department of Primary Industries (Water)
PO Box 309
Nowra NSW 2541

The Secretary
Transport for NSW
PO Box K659
Haymarket NSW 1240

The Chief Executive
Office of the National Rail Safety Regulator (NSW)
PO Box A2633,
Sydney South, NSW 1235

The Landowner

Stephen Richardson

From: David Zerafa <david.zerafa@dpi.nsw.gov.au>
Sent: Thursday, 28 January 2016 2:23 PM
To: Stephen Richardson
Subject: Re: FW: Proposed Modification to Approved Packing Plant, Shoalhaven Starches Expansion Project

Hi Stephen,

My apologies for not responding sooner. I have just returned from leave yesterday so this is my first opportunity to respond to your email.

Stephen, I can confirm that your email reflects the discussions we had at our meeting at Shoalhaven Starches on 9th December 2015.

My only additional suggestion is in regards to the riparian revegetation offset along Abernethys Creek, that the revegetation occupy the entire area remaining between the creek and the proposed road.

Regards David

David Zerafa
Senior Water Regulation Officer
Department of Primary Industries - Water

NSW Government Offices
5 O'Keefe Avenue, Nowra
PO Box 309 Nowra 2541
Phone (02) 4428 9142
Fax (02) 4421 2172
Mobile 0427 663187
Email:david.zerafa@dpi.nsw.gov.au

On 17 December 2015 at 08:11, Stephen Richardson <Steve@cowmanstoddart.com.au> wrote:

Dear David,

I refer to my email dated 9th December 2015 in connection with the above matter. Could you advise when you expect that you will be able to respond to that email?

Regards

Stephen Richardson

Cowman Stoddart Pty Ltd

PO BOX 738 NOWRA NSW 2541

T 02 4423 6198

T 02 4423 6199

www.cowmanstoddart.com.au

steve@cowmanstoddart.com.au

From: Stephen Richardson

Sent: Wednesday, 9 December 2015 11:59 AM

To: 'david.zerafa@dpi.nsw.gov.au' <david.zerafa@dpi.nsw.gov.au>

Cc: Brian Hanley <brian.hanley@manildra.com.au>; Greg Murphy <greg.murphy@manildra.com.au>; John Studdert <John.Studdert@manildra.com.au>; 'Aaron Ticehurst' <aaron.ticehurst@manildra.com.au>; 'mark.owens@manildra.com.au' <mark.owens@manildra.com.au>

Subject: Proposed Modification to Approved Packing Plant, Shoalhaven Starches Expansion Project

Dear David,

I refer to our meeting held at Shoalhaven Starches offices this morning in connection with the above matter.

At the meeting we discussed Shoalhaven Starches proposal to modify the alignment of the rail spur line and the provision of a second rail spur line. In addition, the re-alignment of the rail spur line and additional rail line will push these works and the approved access road further in an easterly direction towards Abernethy's Creek. Plans of these works have previously been supplied to you in correspondence from Manildra dated 28th October 2015 and again further revised designs in my email to you dated 8th December 2015. These modified works would encroach into the 30 metre riparian corridor zone identified in the original riparian assessment that supported the original Project Application for this proposal. As discussed at the meeting however, the approved Landscape & Vegetation Management Plan under this previous Project Approval made provision for only planting of vegetation along the top bank of Abernethy's Creek to the north of Bolong Road.

At our meeting earlier today, you confirmed that the 30 metre riparian corridor zone was a guideline and was not necessarily hard and fast. Following our discussion of the proposal you indicated that you did not raise objection to the proposal provided the application provides justifies for the encroachment within proximity of Abernethy's Creek including :

- The need for the provision of two rail spur lines so as to provide additional rail storage on the north side of Bolong Road which will reduce the extent to which rail movements will impact on traffic travelling along Bolong Road.
- The required design requirements that warrant a larger radius arc than originally approved.
- The basis for the commencement point of the spur line.
- Demonstrate that the proposal works will not have an adverse impact on the stability of the streambank of Abernethy's Creek.
- Provide a vegetation offset by way of a wider streambank revegetation along the Abernethy's Creek to the east of the proposed road and extending along the Abernethy's Creek frontage to this side.

Such revegetation is to be wider than that originally approved (say a minimum of 10 m wide at the northern boundary) and extending towards Bolong Road.

I trust that the above is consistent with your recollection of our meeting. I would appreciate it if you could respond by reply email that you concur with the above summary, and if required detail anything that I may have left out which you consider we should address.

I would appreciate it if you could provide your response to this email as soon as possible.

If you require any clarification in connection with the above please do not hesitate to contact me.

Regards

Stephen Richardson

Cowman Stoddart Pty Ltd

PO BOX 738 NOWRA NSW 2541

T 02 4423 6198

T 02 4423 6199

F 02 4423 1569

www.cowmanstoddart.com.au

steve@cowmanstoddart.com.au

This message is intended for the addressee named and may contain confidential information. If you are not the intended recipient, please delete it and notify the sender. Views expressed in this message are those of the individual sender, and are not necessarily the views of their organisation.



**Office of
Environment
& Heritage**

Date: 9 November 2015
Your reference: Proposed Mod MP06_0228
Our reference: DOC15/446604
Contact: Calvin Houlison
4224 4179

Ming Leung
Site Manager
Shoalhaven Starches Pty Ltd
PO Box 123
NOWRA NSW 2541
E-mail: ming.leung@manildra.com.au

Dear Mr Leung

RE: Proposed Modification to Approved Packing Plant, Shoalhaven Starches (MP06_0228)

Thank you for consulting us regarding the proposed modification to the approved Shoalhaven Starches expansion project. We understand that the proposed modification comprises an increase in the floor area of the approved packing plant from 3050m² to 6200m², additional rail spur and realigned bridge crossing of Bolong Road.

The implications of the full range of floods, including events greater than the design flood, up to the probable maximum flood (PMF), should be considered as part of the proposed modification. In particular, consideration should be given to:

- the impact of flooding on the development;
- the impact of the development on flood behaviour including any management measures to mitigate adverse flood impacts;
- the impact of flooding on the safety of people/users of the development;
- the development control plans or policies of Shoalhaven City Shire Council (SCC) in relation to the management of flood risk;
- the best available flood information for the area from SCC;
- the SCC's requirements for flood investigations to support development, whether flood information is currently available or not;
- the full range of flood events, up to and including the probable maximum flood (PMF);
- the flood hazard in the area including the hydraulic hazard, floodways, flood readiness, flood warning time, rate of rise of floodwater, flood duration and type of development;
- the flood hazard of any access routes;
- the implications of climate change on flooding; and,
- the impact of flooding on the safety of people/users of the development.

Please do not hesitate to contact me on 4224 4179 or via e-mail calvin.houlison@environment.nsw.gov.au should you have any further queries.

Yours sincerely

A handwritten signature in black ink, appearing to be 'CH' or a stylized 'LH'.

CALVIN HOULISON
Conservation Planning Officer



Australian Government
Department of Defence
Estate and Infrastructure Group

Anthony Farrell
Director Estate Planning ACT/NSW
Estate Planning Branch
Brindabella Business Park (BP26-1-A066)
PO Box 7925
Department of Defence
CANBERRA BC ACT 2610
☎: (02) 6266 8034
✉: anthony.farrell@defence.gov.au

REF: AF23655393

Mr Stephen Richardson
Cowman Stoddart Pty Ltd
PO Box 738
Nowra NSW 2541

Dear Mr Richardson

RE: Shoalhaven Starches – Modification to Shoalhaven Starches Expansion Project (SSEP)

The Department of Defence (Defence) would like to thank Cowman Stoddart Pty Ltd for referring this matter to Defence. Defence understands the applicant, Shoalhaven Starches Pty Ltd, is proposing to undertake further modifications to its approved development at its Bolong Road, Bomaderry factory site which will result in parts of its development exceeding a height of 30 metres.

Defence has reviewed the proposal and the proposed modifications will not infringe the Outer Horizontal Surface of the Obstruction Limitation Surface (257.5m Australian Height Datum) of HMAS *Albatross*.

However, there is an ongoing need to obtain and maintain accurate information about tall structures. The risk posed by a tall structure to aircraft safety can be minimised if information on the tall structure is conveyed to pilots so that they can fly at a safe margin above the structure. Airservices Australia is responsible for recording the location and height of tall structures. The information is held in a central database and relates to the erection, extension or dismantling of tall structures the top of which is:

- a. 30 metres or more above ground level - within 30 kilometres of an aerodrome, or
- b. 45 metres or more above ground level elsewhere.

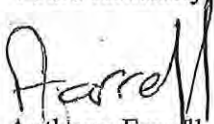
The proposed modifications will meet the above definition of tall structure. Defence therefore requests the applicant provide Airservices Australia with "as constructed" details. The "as constructed" information can be emailed to Airservices Australia via vod@airservicesaustralia.com

Should LED obstruction lighting be provided to the proposed modifications, then Defence requests the frequency range of the LED light emitted fall within the range of wavelengths 655 to 930 nanometers, thus being visible to persons using night vision devices.

Defence has no concerns at this time with the proposal subject to the above requests being met.

Should you have any questions my point of contact on this matter is Mr Sean Wilkinson who can be contacted on (02) 6266 8201 or via email at DSRGIDEP.ExecutiveSupport@defence.gov.au.

Yours faithfully



Anthony Farrell

Director Estate Planning ACT/NSW

10 December 2015