

Modification of Development Consent

Section 4.55(1A) of the *Environmental Planning and Assessment Act 1979*

As delegate for the Minister for Planning under delegation executed on 26 April 2021, I approve the modification of the development consent referred to in Schedule 1, subject to the conditions in Schedule 2.



Joanna Bakopanos
Team Leader
Industry Assessments

Sydney

15 February 2022

SCHEDULE 1

Development Consent

Approval:

MP06_0228 granted by the Minister for Planning on 28 January 2009

For the following:

Shoalhaven Starches Expansion Project

Modification 24

Modification Application:

MP06_0228-Mod-24 (MOD 24)

Modification to the approved Gluten Dryer No.8 (GD8) Building including the increase in building footprint, increase in building height, re-siting of the GD8 building and the relocation of site infrastructure to accommodate changes to the GD8 building.

Applicant:

Shoalhaven Starches Pty Ltd

Consent Authority:

Minister for Planning

The Land:

Bolong Road, Bomaderry

SCHEDULE 2

This consent is modified as follows:

In the Definitions List:

1. Delete the words “Industry” in the definition of “Department”.

2. Delete the words “and MOD 20” in the definition of “Development” and replace with the words “, MOD 20 and MOD 24.”
3. Delete the words “,Industry” in the definition of “Planning Secretary”.

In Schedule 2: Administrative Conditions:

4. Inserting new Condition 2v) after Condition 2u) as follows:
 - v) modification application MP06_0228-Mod-24 (MOD 24), accompanying Statement of Environmental Effects dated 15 December 2022, prepared by Cowman Stoddart Pty Ltd (see Appendix 2U) and plans dated 28 October 2021.

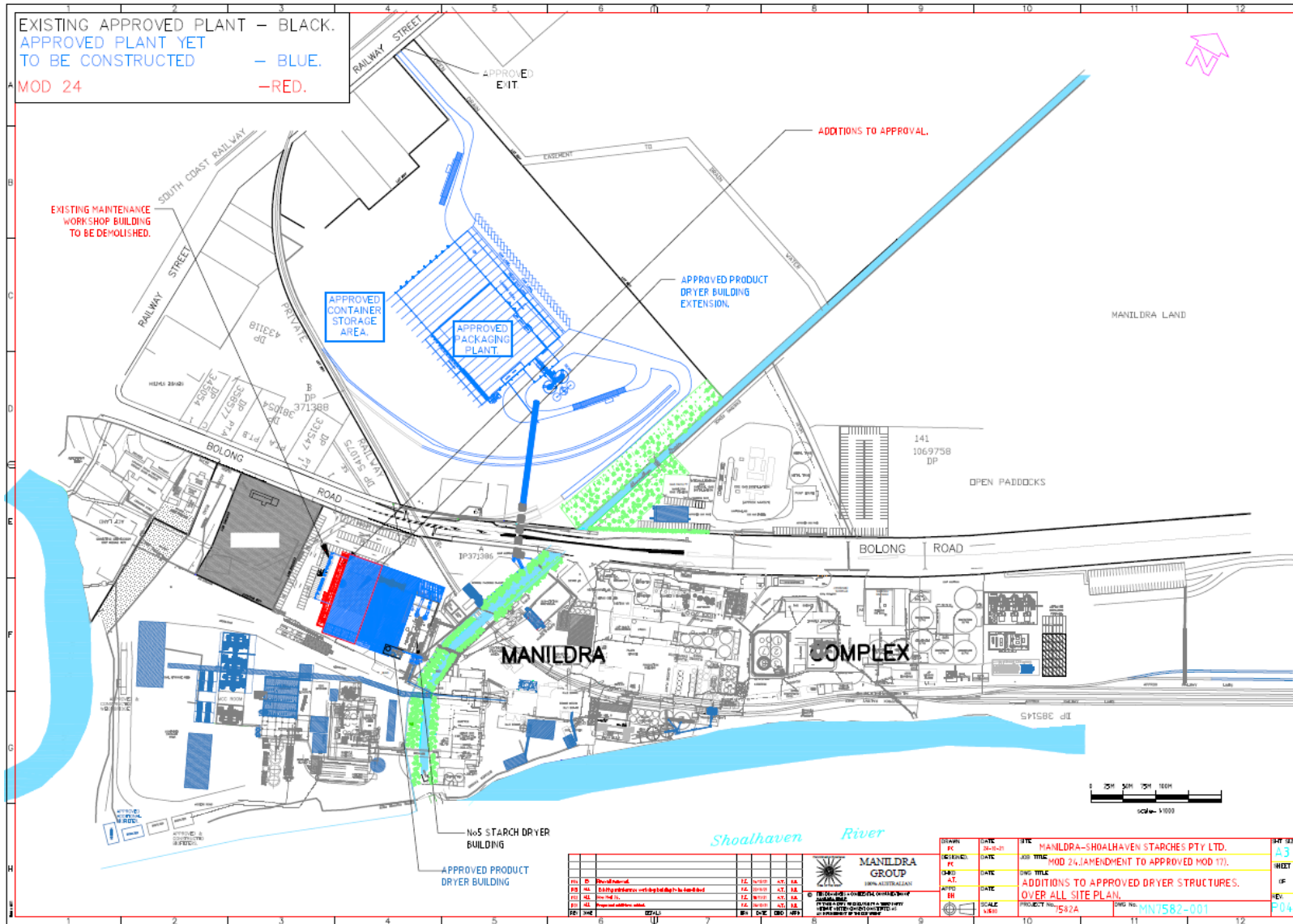
In the Appendices

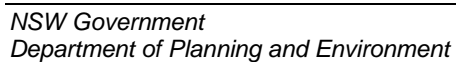
5. Inserting new Appendix 2U (as shown in Appendix 1) after Appendix 2T.

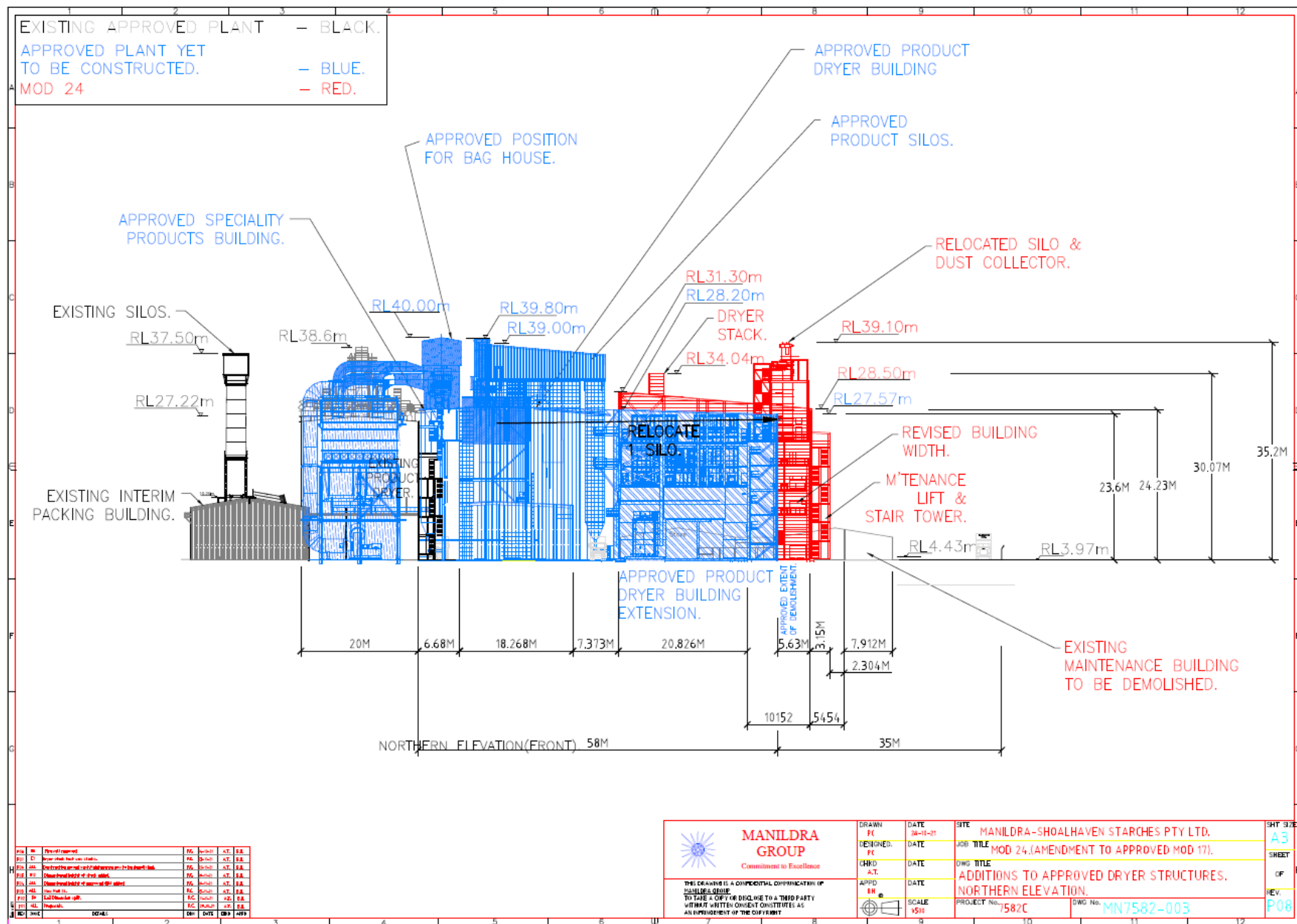
End of modification

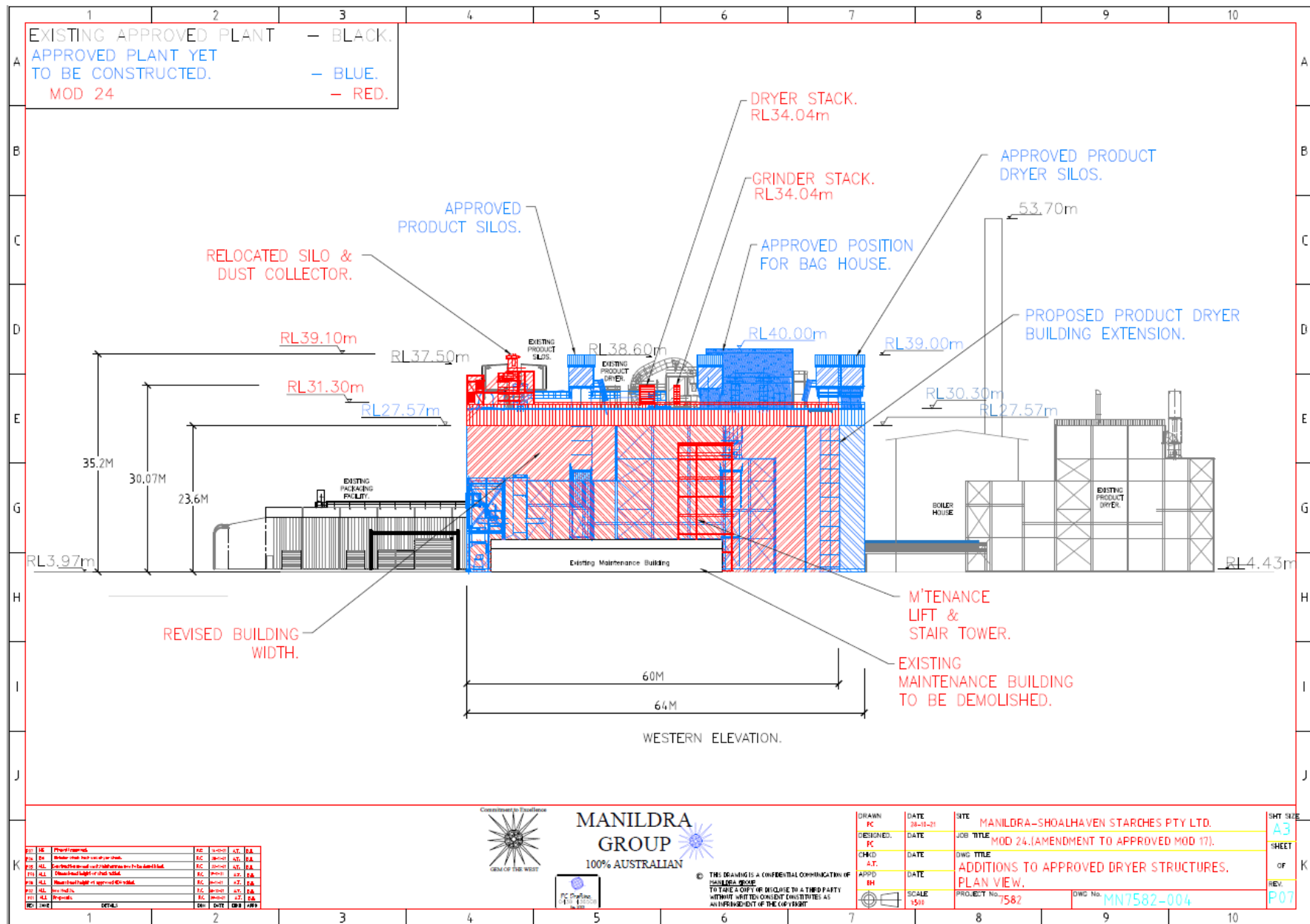
(MP06_0228-Mod-24)

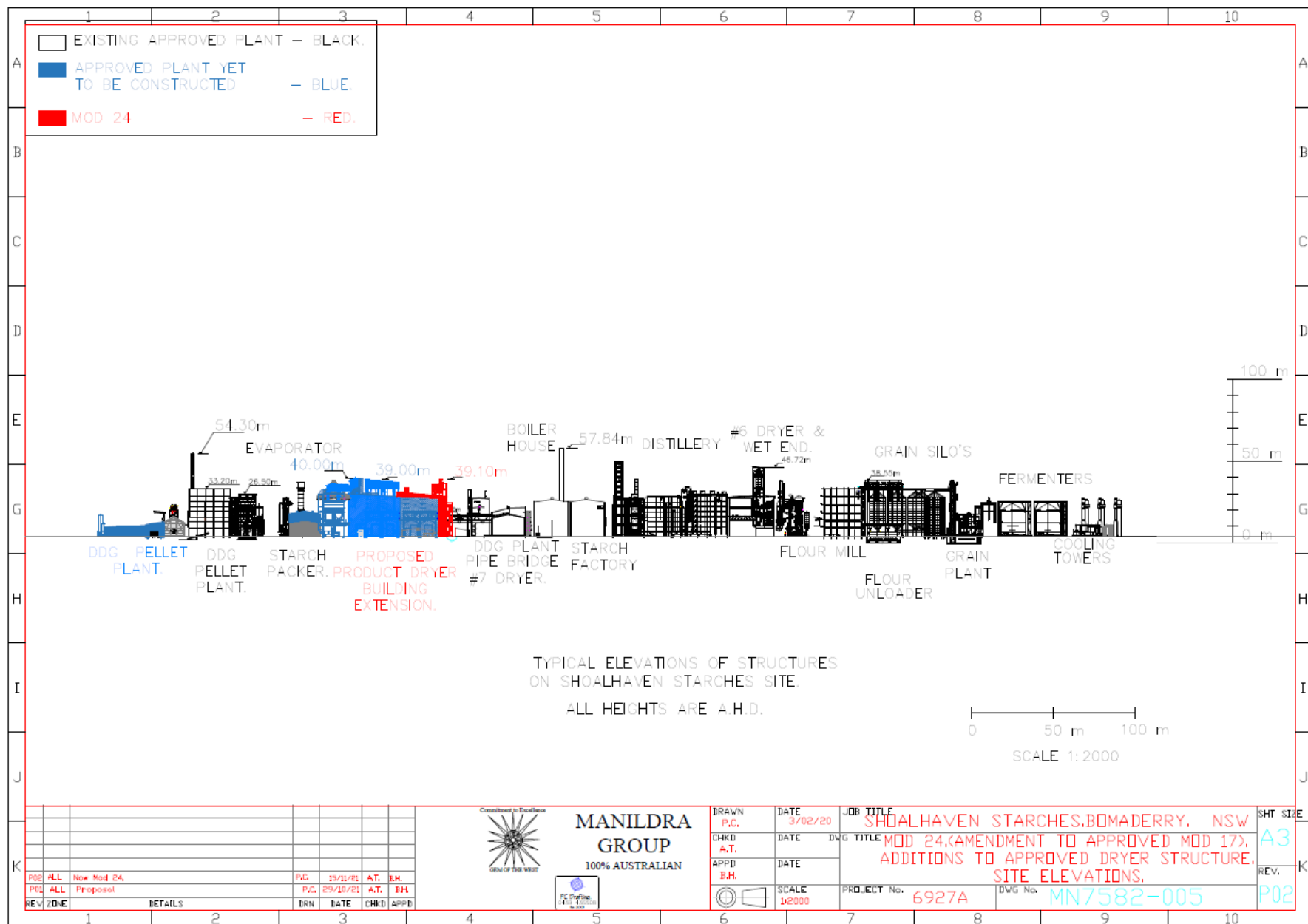
Appendix 2U – Site Plans (MP 06_0228 MOD 24)

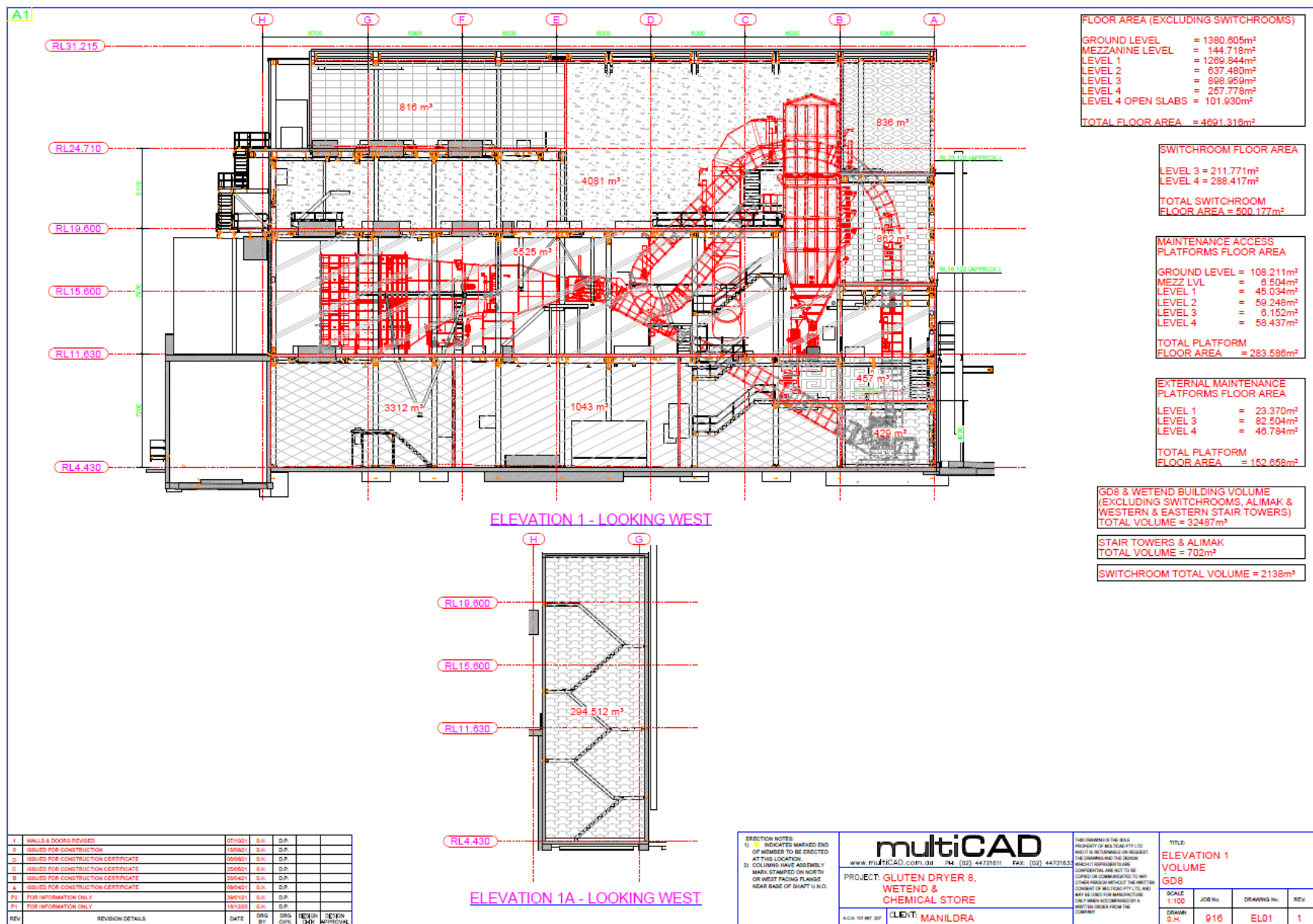




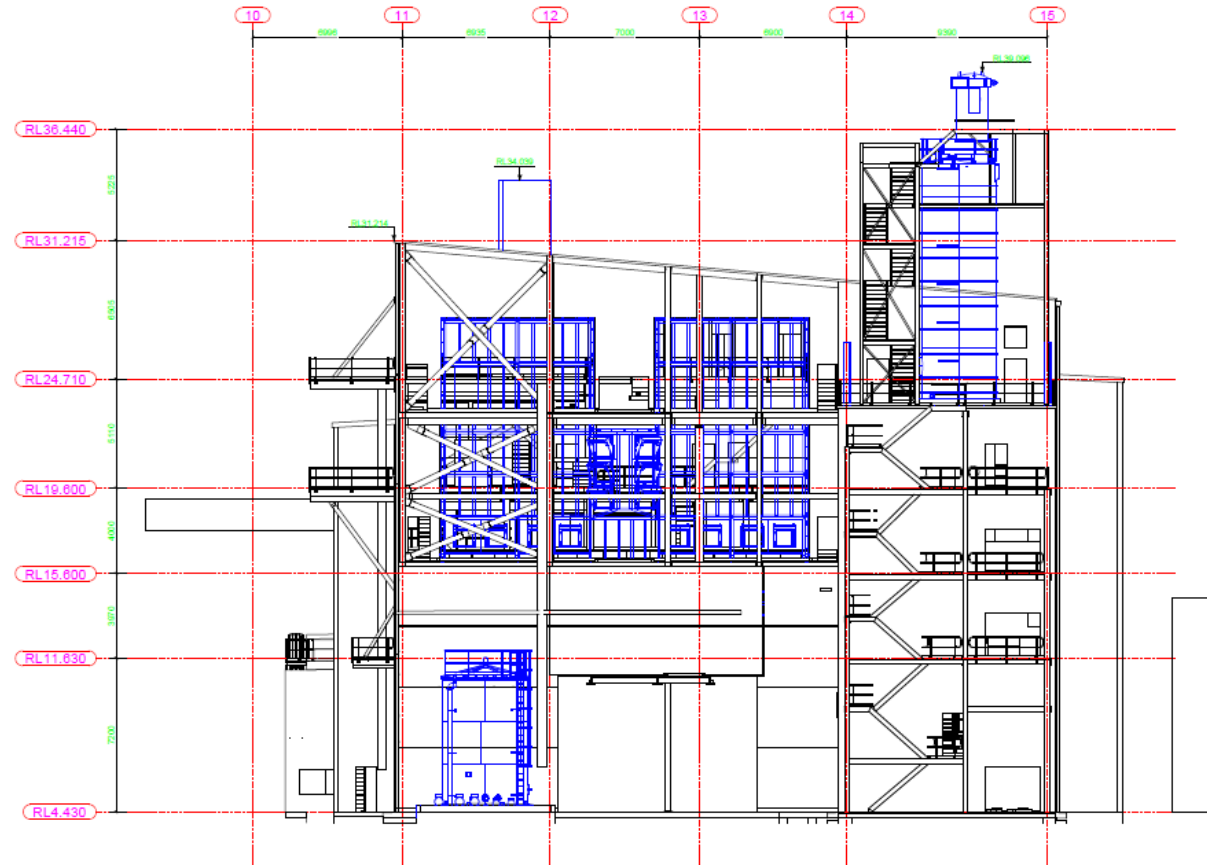








A1



SECTION NOTES:
1) INDICATED MARKED END
OF MEMBERS TO BE DETECTED
AT THIS LOCATION.
2) COLUMNS HAVE ASSEMBLY
MARKS STAMPED ON NORTH
OR WEST FACING FLANGE
NEAR BASE OF SHIRT S.I.D.

multiCAD
www.multiCAD.com.au PH: (02) 44721611 FAX: (02) 44721633
PROJECT: GLUTEN DRYER 8,
WETEND &
CHEMICAL STORE
CLIENT: MANILDRA

THIS DRAWING IS THE SOLE
PROPERTY OF MULTICAD PTY LTD
AND IS NOT TO BE REPRODUCED
OR COPIED IN ANY MANNER
WITHOUT THE WRITTEN
CONSENT OF MULTICAD PTY LTD.
ANY REUSE FOR MANUFACTURE
OR CONSTRUCTION WITHOUT THE
WRITTEN CONSENT OF THE
COMPANY.

TITLE:
NORTHERN ELEVATION
GD8 & WETEND

SCALE	JOB No.	DRAWING No.	REV.
1:100	916	EL14	0

REV	ISSUED FOR CONSTRUCTION	DATE	DESIGNED BY	CHECKED BY	APPROVED BY
0	ISSUED FOR CONSTRUCTION	20/10/21	S.K.	D.P.	

