

# Modification of Development Consent

Section 4.55(1A) of the *Environmental Planning and Assessment Act 1979*

As delegate of the Minister for Planning and Public Spaces executed on 9 March 2020, we the Independent Planning Commission of New South Wales (the Commission) approve the modification of the development consent referred to in Schedule 1, subject to the conditions in Schedule 2.

## Member of the Commission

Sydney

2020

---

### SCHEDULE 1

**Development consent:** 06\_0228

**Applicant:** Shoalhaven Starches Pty Ltd

**Consent Authority:** Minister for Planning and Public Spaces

**Development:** Shoalhaven Starches Expansion Project

**Date of original approval:** 29 January 2009

**Modification:** 06\_0228 MOD 17 - relocation of the approved No.5 Starch Dryer baghouse, installation of a service lift, alterations to the Specialty Products Building and Product Dryer Building including increase of building footprint, elevation of service conduit and alternative woodchip fuel source for Boilers 2 and 4.

## SCHEDULE 2

This consent is modified as follows:

### **In the Definitions List:**

1. Delete the following definition:

Development	The development described in the EA, which includes the continued implementation of all existing and approved development on site, as modified by MOD 1, MOD 2, MOD 3, MOD 4, MOD 5, MOD 6, MOD 7, MOD 8, MOD 9, MOD 10, MOD 11, MOD 12, MOD 13, MOD 14, MOD 15, MOD 16 and MOD 18
-------------	--

2. Insert the following definition in alphabetical order:

Development	The development described in the EA, which includes the continued implementation of all existing and approved development on site, as modified by MOD 1, MOD 2, MOD 3, MOD 4, MOD 5, MOD 6, MOD 7, MOD 8, MOD 9, MOD 10, MOD 11, MOD 12, MOD 13, MOD 14, MOD 15, MOD 16, MOD 17 and MOD 18
-------------	--

### **In Schedule 2: Administrative Conditions:**

3. delete Condition 2r) and replace with the following:

- r) modification application 06\_0228 MOD 17, accompanying Statement of Environmental Effects dated 13 December 2019, prepared by Cowman Stoddart Pty Ltd, Addendum Statement of Environmental Effects and amended plans dated 19 June 2020 and RtS dated 28 July 2020.

4. Inserting new Condition 2s) after Condition 2r) as follows:

- s) modification application 06\_0228 MOD 18, accompanying Statement of Environmental Effects dated 18 May 2020, prepared by Cowman Stoddart Pty Ltd (see Appendix 2P), RtS and amended plans date 6 July 2020.

### **In Schedule 3: Specific Environmental Conditions:**

5. Inserting new Condition 9I after Condition 9H as follows:

- 9I. Within 8 months of commissioning Boilers 2 and 4 for use with a mixed fuel source as described in MOD 17, the Applicant must submit a Post Commissioning Verification Report to the Planning Secretary and the EPA. The report must:
  - a) include the analytical results and monitoring reports for post commissioning monitoring undertaken in accordance with the requirements set out in the EPL and for the pollutants specified in the EPL;
  - b) compare the results obtained by post commissioning monitoring with the estimates and predictions of the Air Quality Impact Assessment prepared by GHD for MOD 17; and
  - c) compare the results obtained by post commissioning monitoring with emissions limits contained in the EPL.

6. Inserting new Condition 9J after Condition 9I as follows:

9J. If the Post Commissioning Verification Report shows that monitoring results exceed the emission concentration limits contained in the EPL and/ or the predictions of the AQIA prepared for MOD 17, the Applicant is required to implement all reasonable and feasible measures to achieve compliance with the relevant limit, to the satisfaction of the Planning Secretary.

7. delete Condition 14Je) and replace with the following:

- e) silencers fitted to each exhaust fan must not exceed a sound pressure level such that the cumulative level of noise emission from all fans combined does not exceed a total sound pressure level of 74 dB(A) when measured or calculated at a distance of 3 m from the discharge silencers. The level of noise reduction achieved must be demonstrated through a final design noise verification as required under Condition 14L.

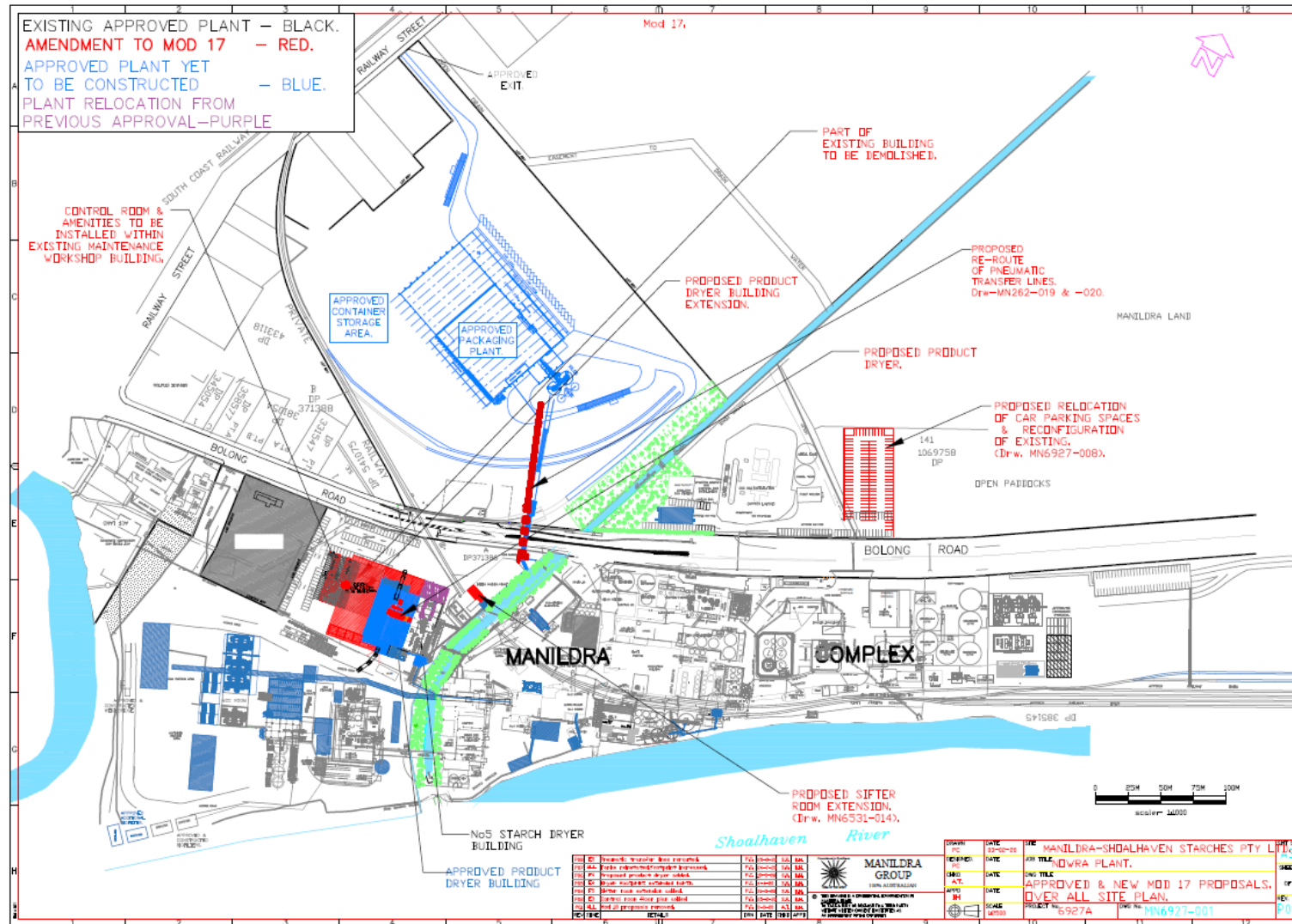
**In the Appendices:**

8. Inserting new Appendix 2R (as shown in Appendix 1) after Appendix 2Q.

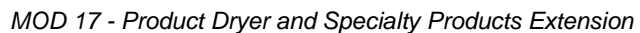
**End of modification  
(06\_0228 MOD 17)**

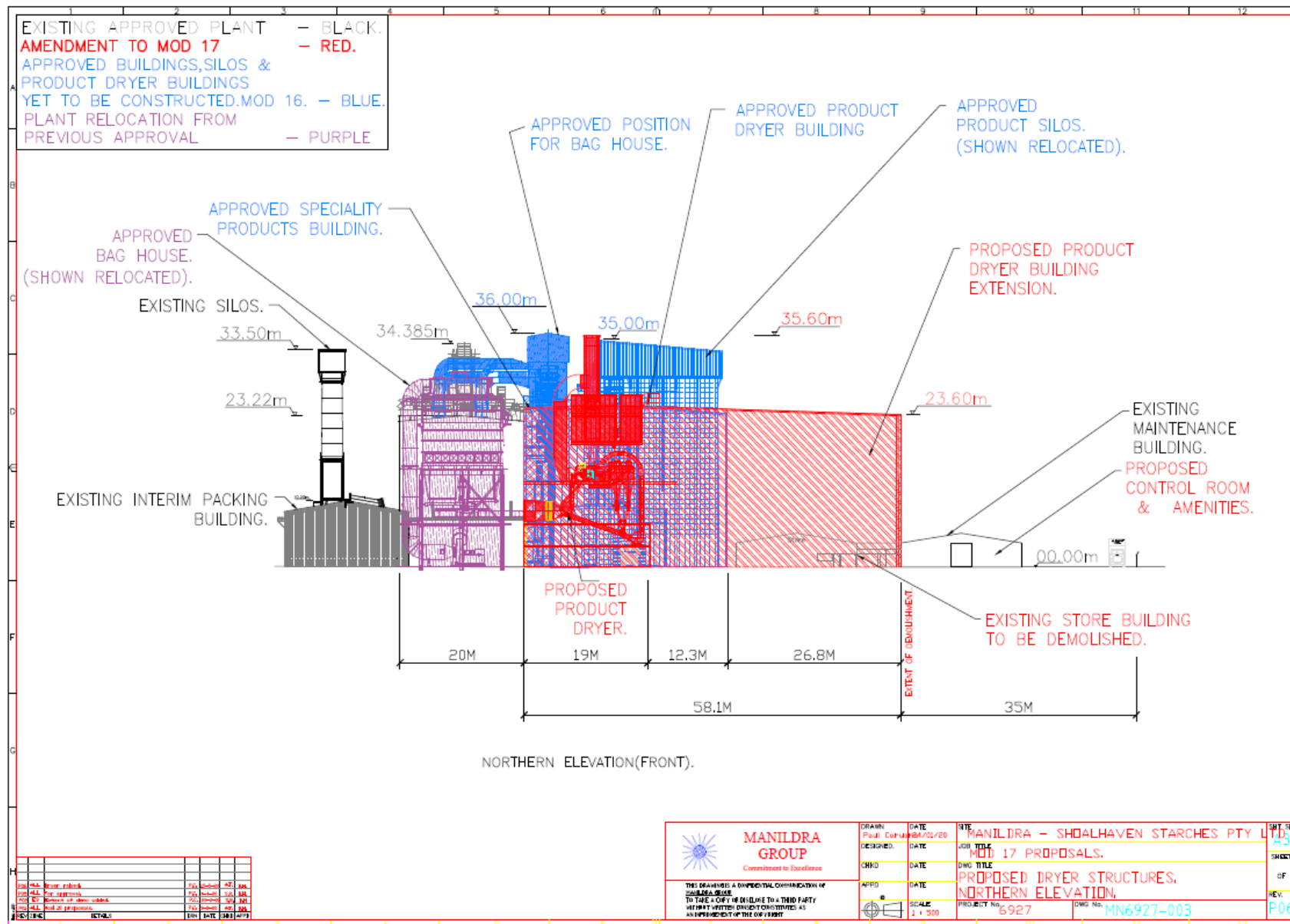
## Appendix 1

### Appendix 2R – Site Plans (MP 06\_0228 MOD 17)

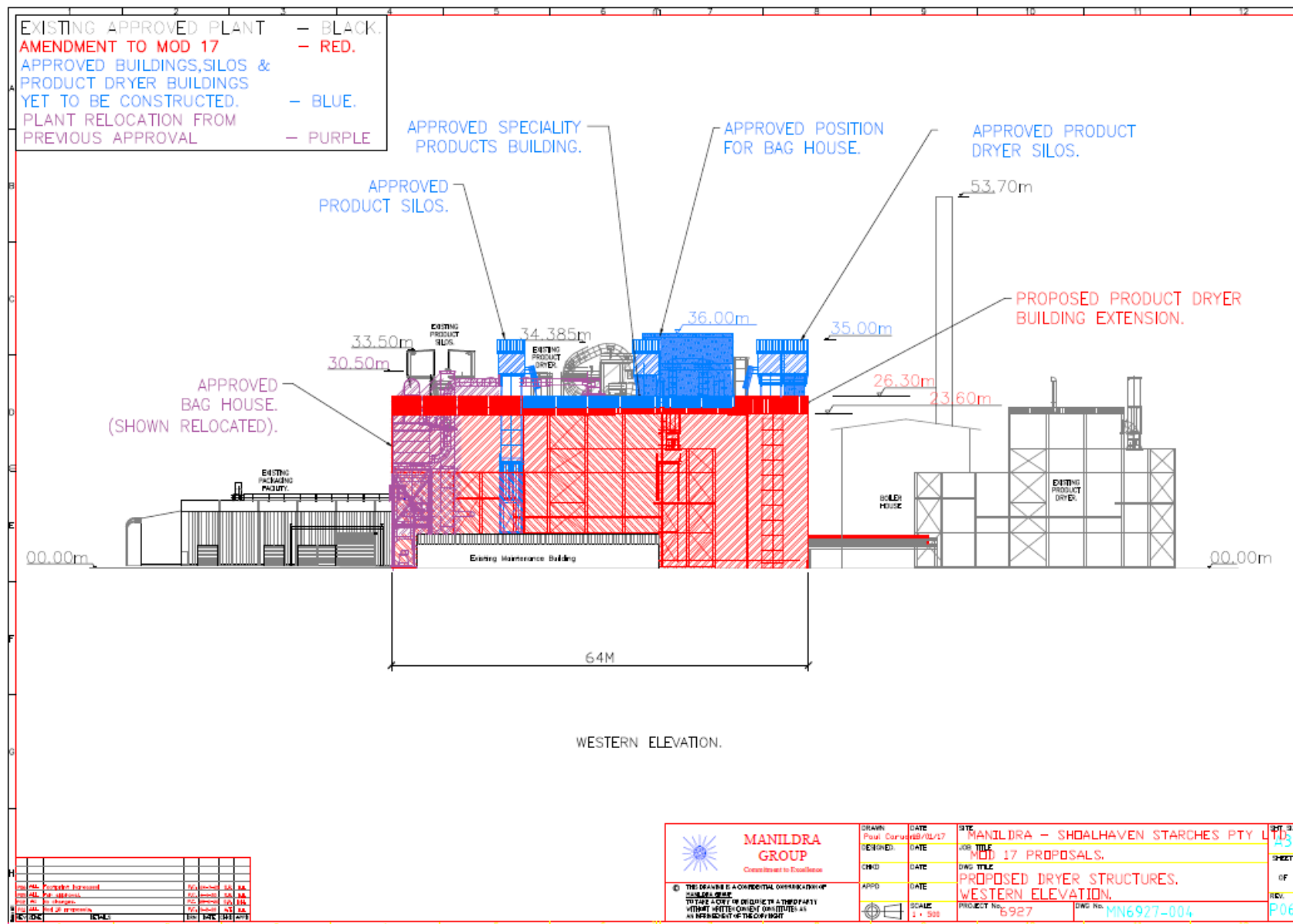


MOD 17 – Site Plan

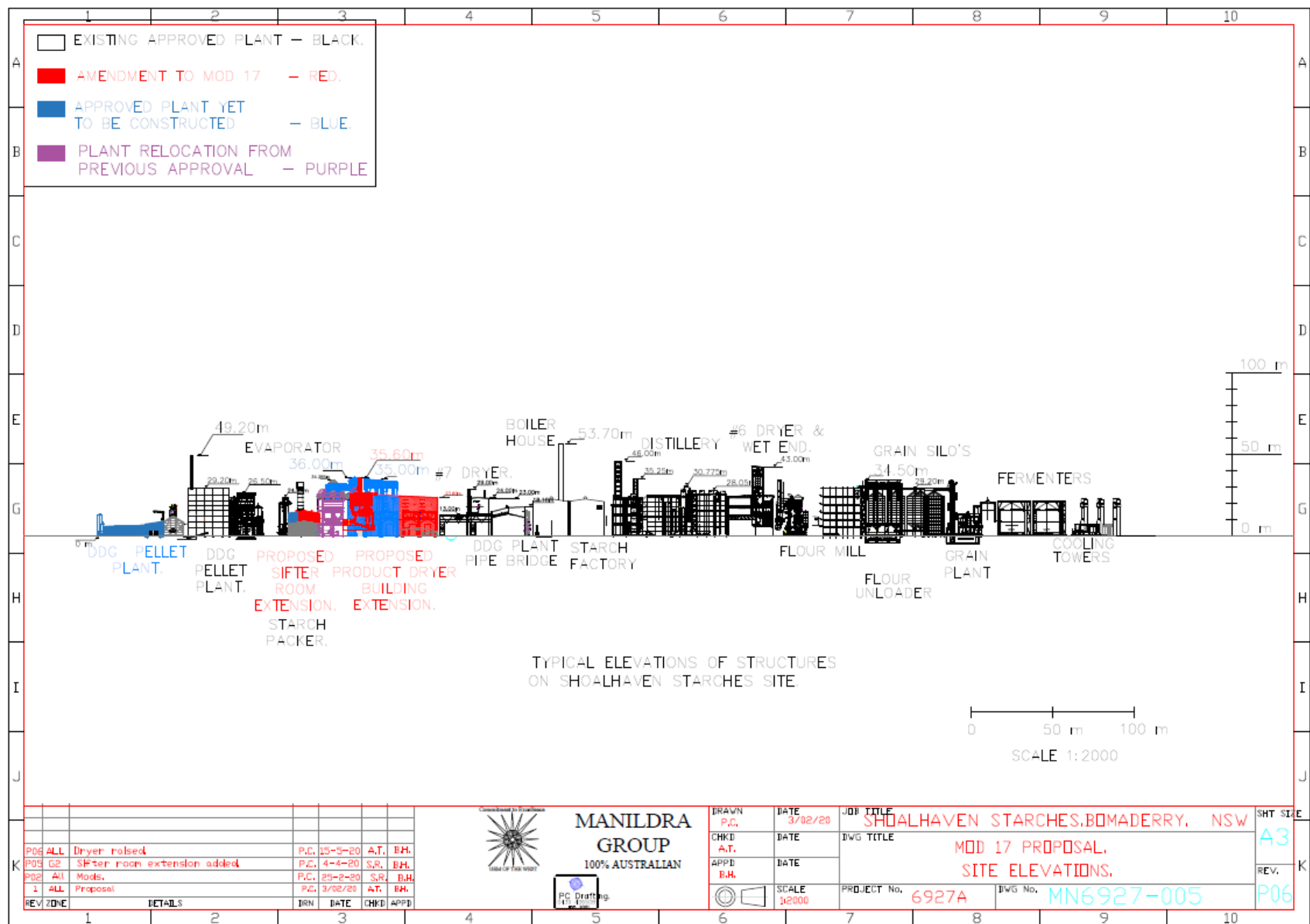








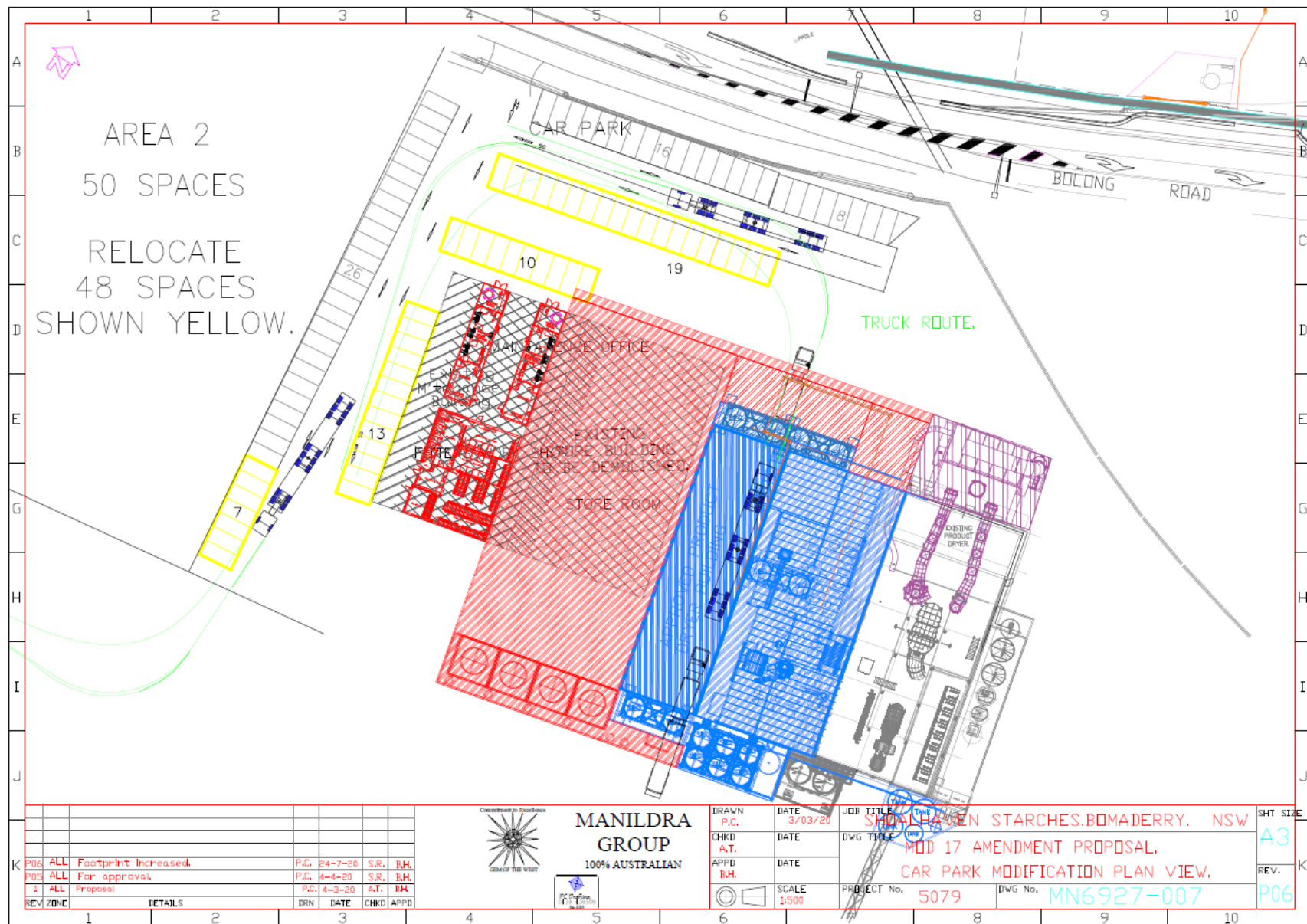
MOD 17 – Product Dryer Western Elevation



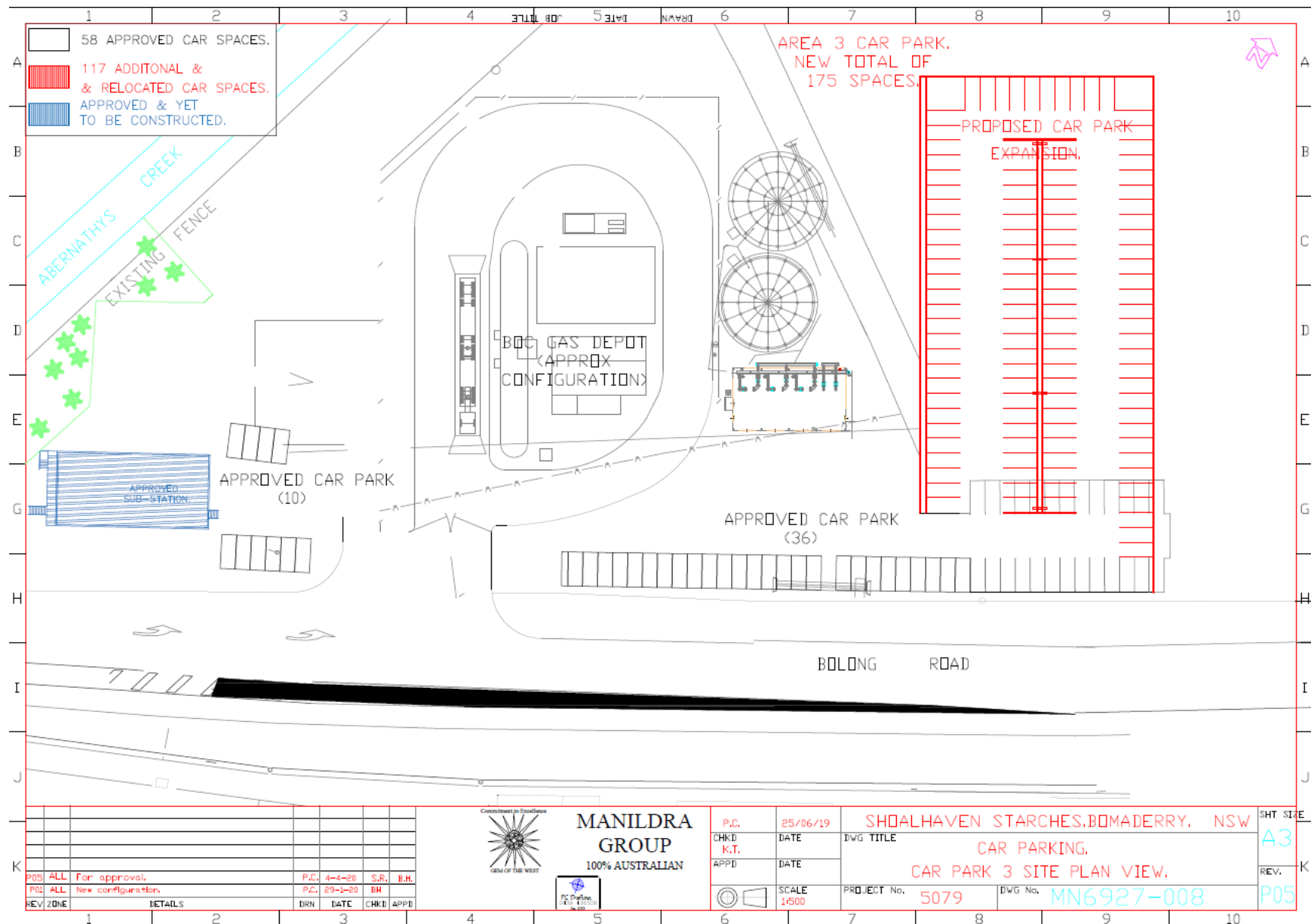
MOD 17 – Site Elevation







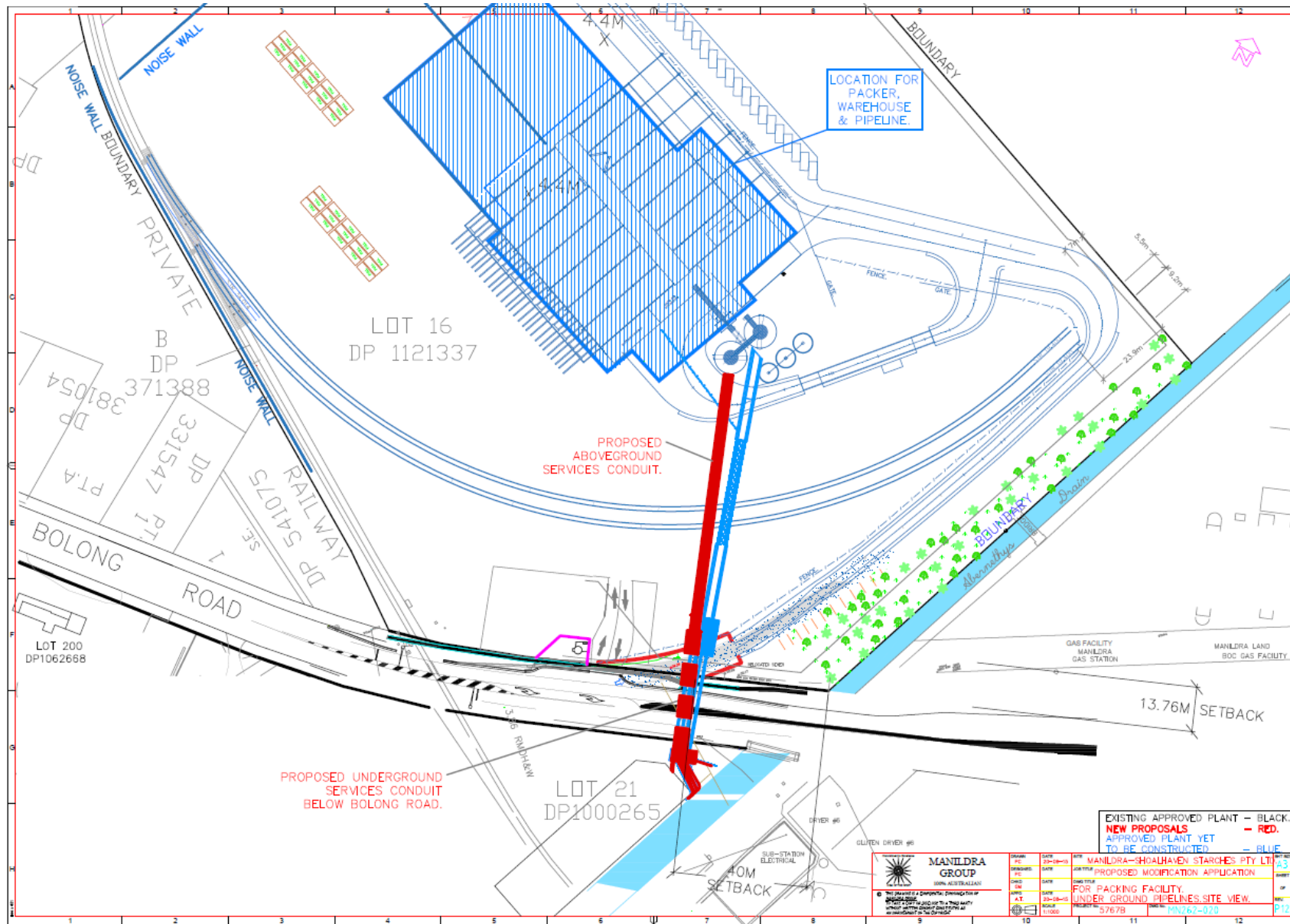
MOD 17 – Relocated Car Parking



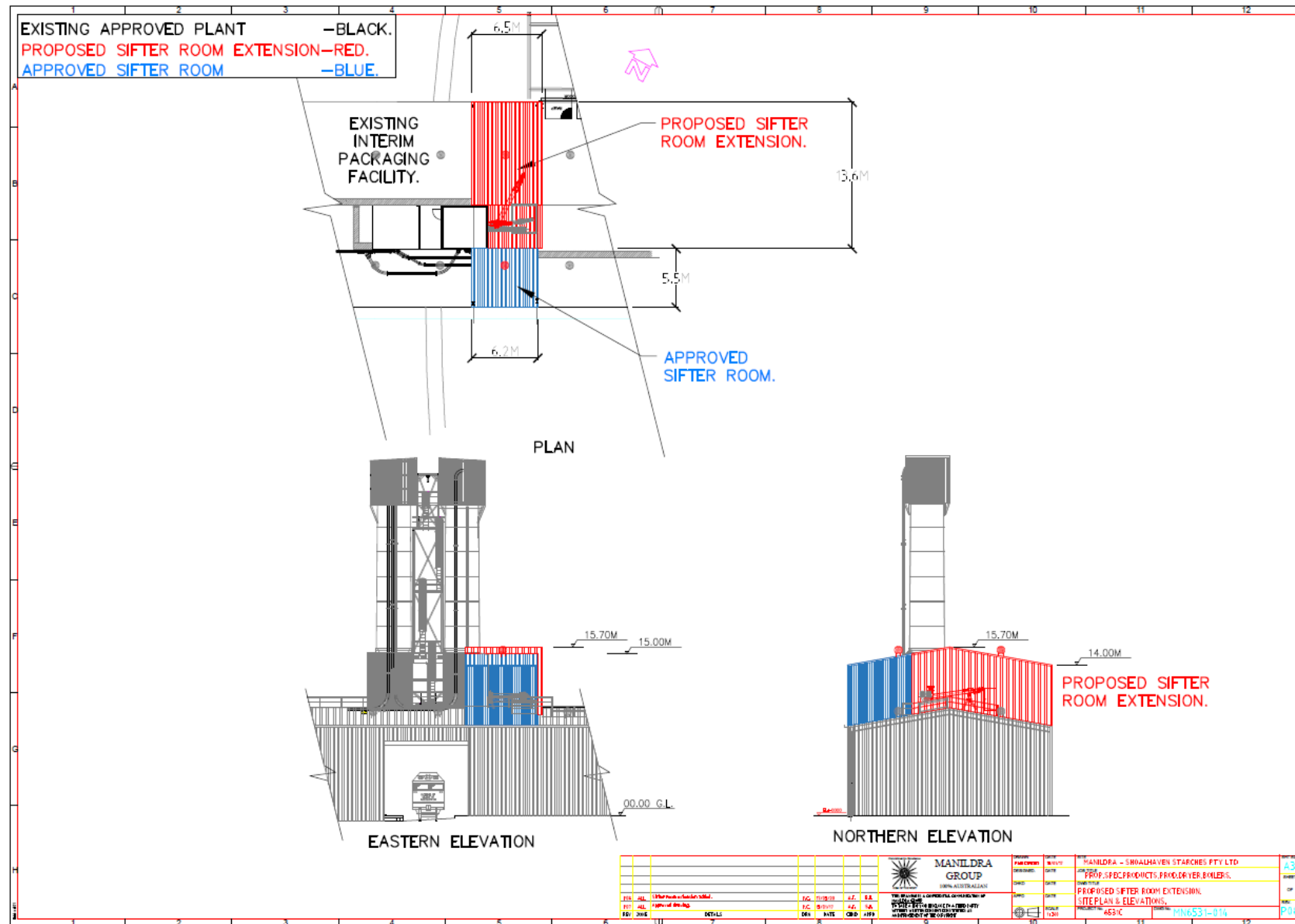
MOD 17 – New Car Parking







MOD 17 – Service Conduit Site Plan



MOD 17 – Sifter Extension