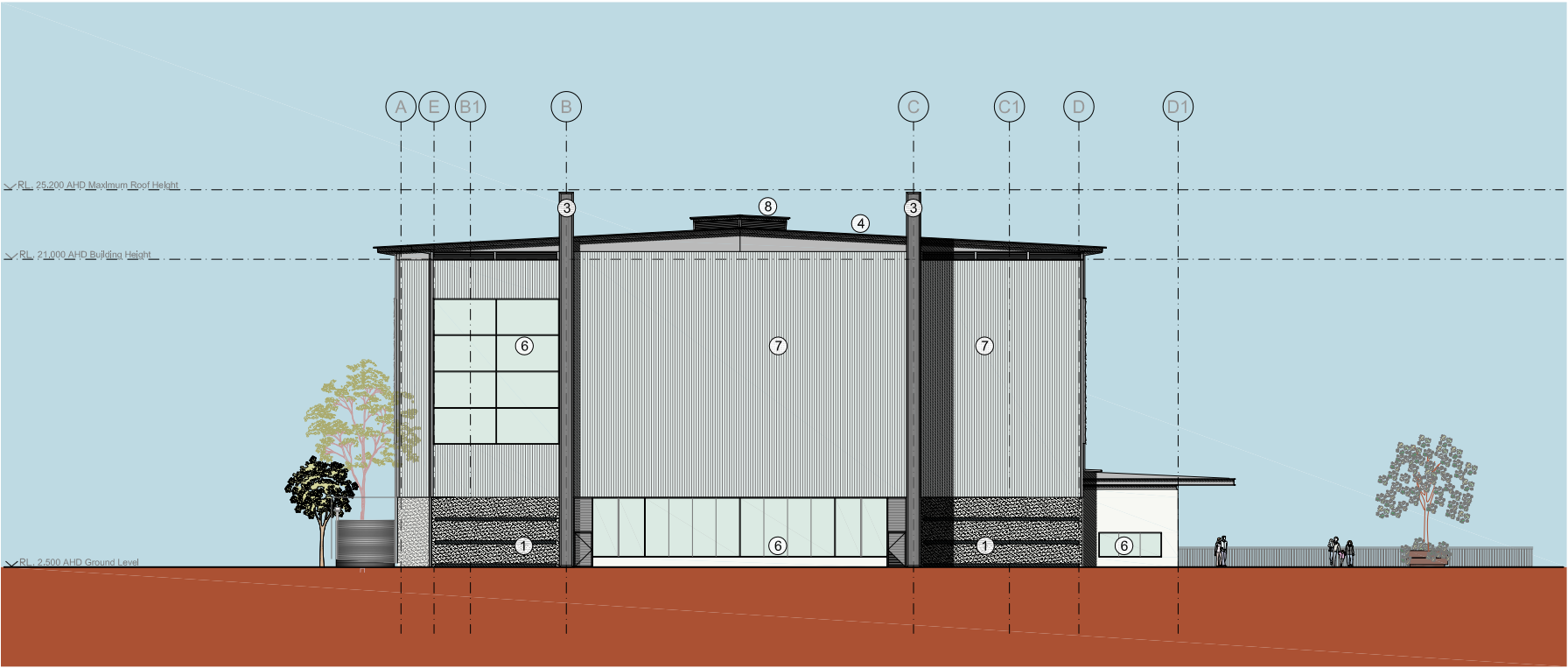








01 East Elevation
1: 200



02 West Elevation
1: 200

Finishes Schedule

	1 Pre-cast off-form concrete (Grey)		2 Concrete with off-form finish		3 Metal sheet with Colorbond finish		4 Metal sheet roofing with Colourbond "Coolmax" finish or similar		5 Glass reinforced polyester wall sheet - grey		6 Glazing		7 Glass reinforced polyester wall sheet - clear		8 Translucent fibreglass roof sheet
---	-------------------------------------	---	---------------------------------	---	-------------------------------------	---	---	---	--	---	-----------	---	---	---	-------------------------------------

 <p>MICHAEL FOUNTAIN ARCHITECTS PTY LTD 2/5 NARABANG WAY BELROSE NSW 2085 TEL (02) 9450 2070 FAX (02) 9450 2757 www.mfa.com.au</p>	<p>PRINTED: May 03, 2012 - 5:12pm P:\ROZELLE MARINE FACILITY - 0114\Cadwork\MFA drawings\MP - Masterplan\86 MARCH 2012\DA DRAWINGS\B 200+201 Elevations- Rendered-Issue G.dwg</p>		project Rozelle Bay Marine Centre James Craig Road, Rozelle Bay, NSW	drawing Western Boat Store Elevations	scale 1: 200	drawing no B-201-DA
					date March 12	issue G