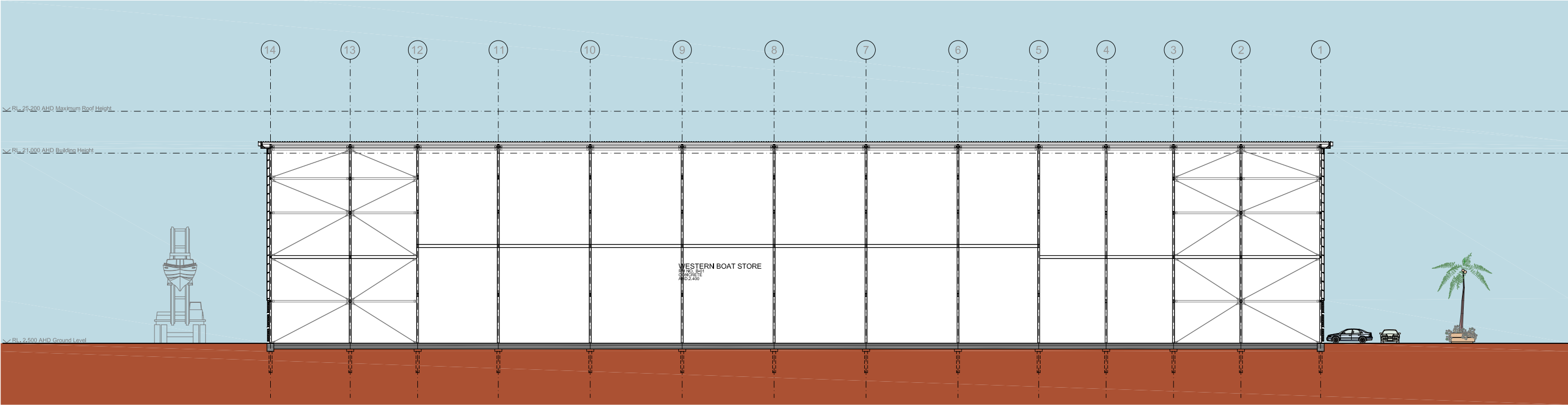




01 Section  
1: 200



02 Section  
1: 200

Finishes Schedule

- 1 Pre-cast off-form concrete (Grey) 2 Concrete with off-form finish 3 Metal sheet with Colorbond finish 4 Metal sheet roofing with Colourbond "Coolmax" finish or similar 5 Glass reinforced polyester wall sheet - grey 6 Glazing 7 Glass reinforced polyester wall sheet - clear 8 Translucent fibreglass roof sheet

 <div><b>MICHAEL FOUNTAIN ARCHITECTS PTY LTD</b> 2/5 NARABANG WAY BELROSE NSW 2085 TEL (02) 9450 2070 FAX (02) 9450 2757 www.mfa.com.au</div>	PRINTED: May 03, 2012 - 5:16pm P:\ROZELLE MARINE FACILITY - 0114\Cadwork\MFA drawings\MP - Masterplan\86 MARCH 2012\IDA DRAWINGS\B 210+211 Sections- Rendered- issue G.dwg		project Rozelle Bay Marine Centre James Craig Road, Rozelle Bay, NSW	drawing Western Boat Store Sections	scale 1: 200	drawing no B-211-DA
					date March 12	issue G