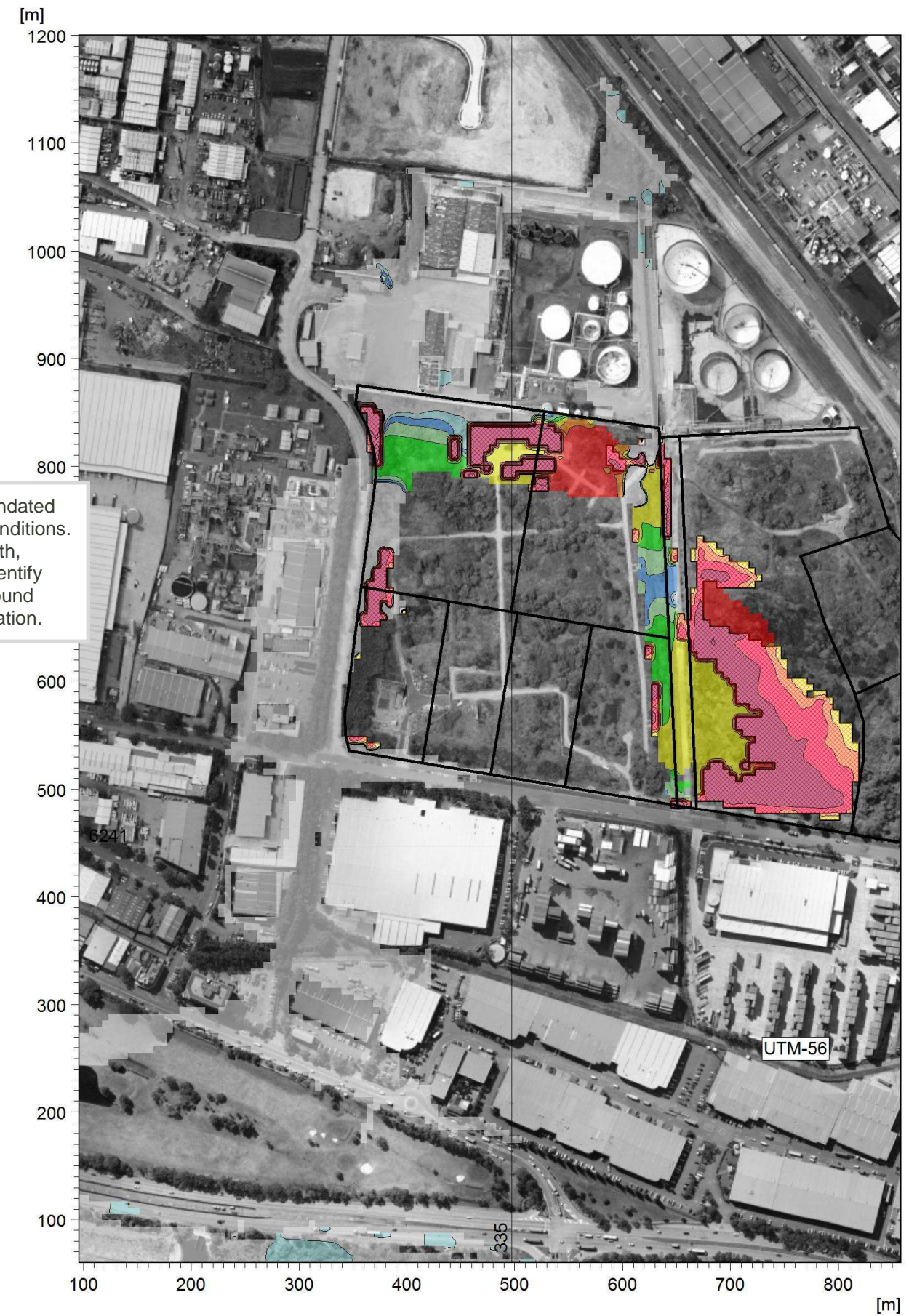
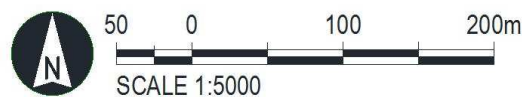




(a) Approved Design - Existing



(b) As-Con with Turning Head at RL~3.85m - Existing

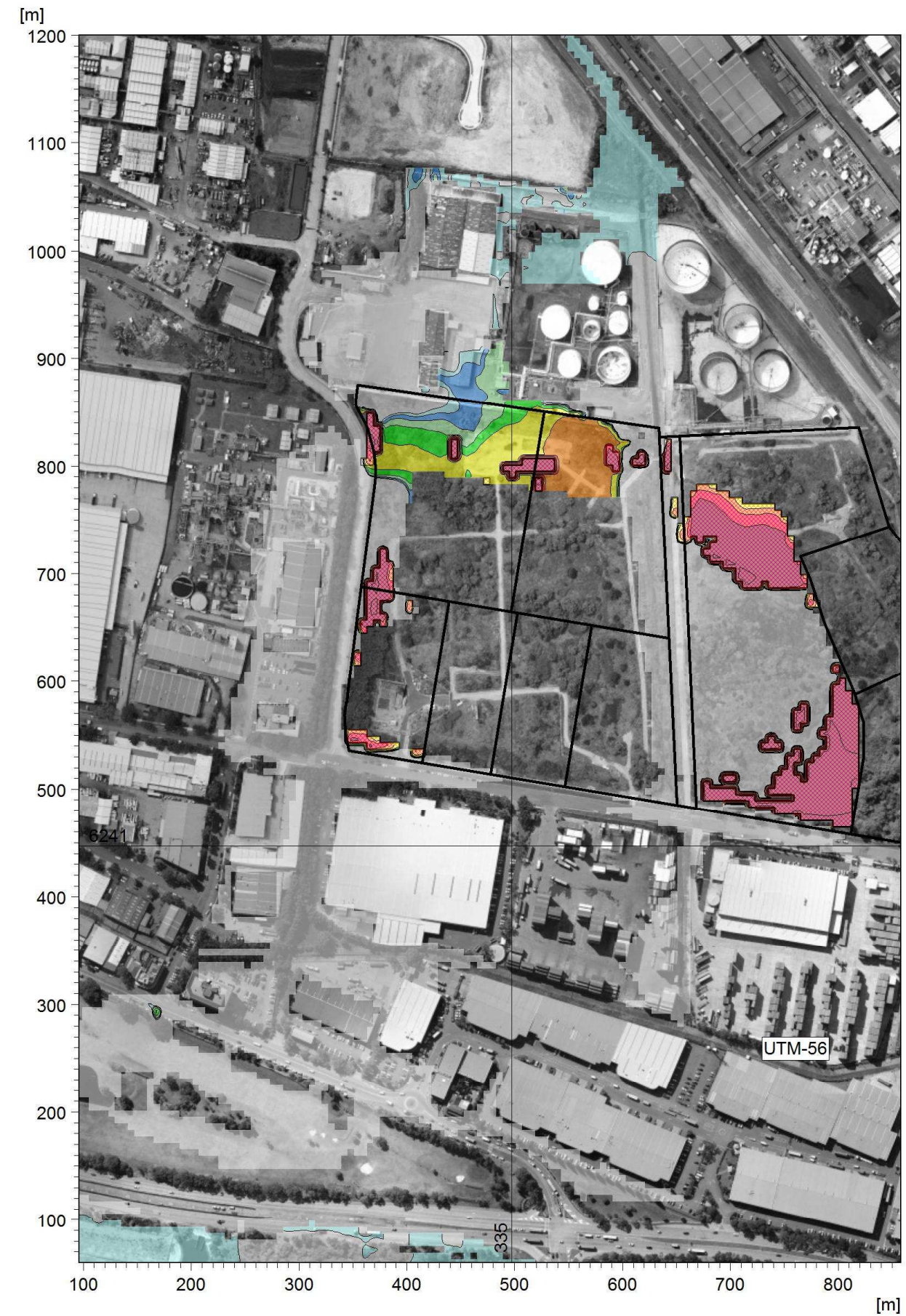


Date: 24 January 2016 Version: 0 Job No: 247910

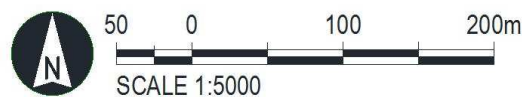




(a) Approved Design - Existing



(b) As-Con with Turning Head at RL~3.85m - Existing



Date: 24 January 2016 Version: 0 Job No: 247910

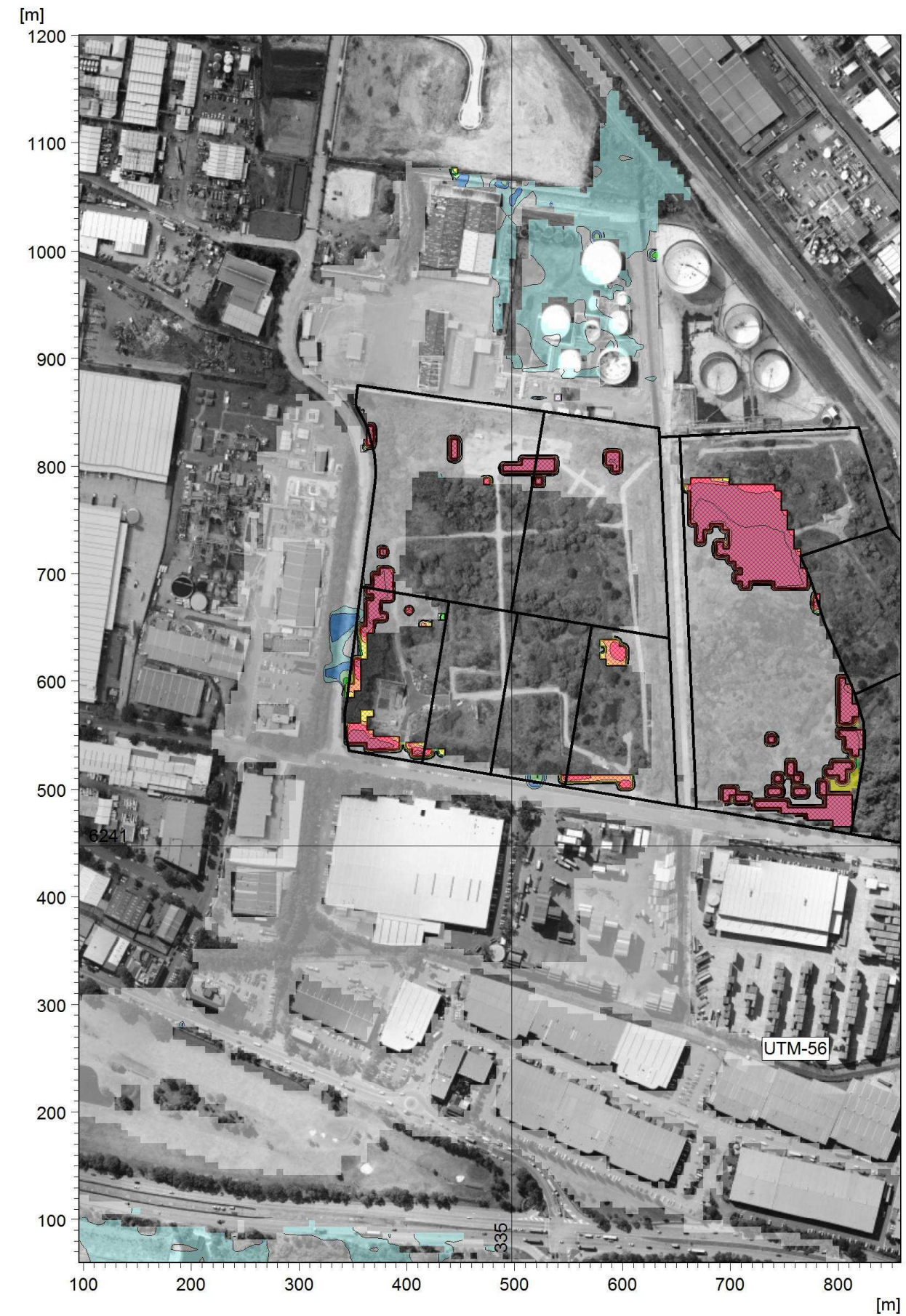
Port Botany Industrial Estate Turning Head Flood Impact Assessment

Figure 6: 10% AEP Design and Turning Head Scenario 1 differences to Existing

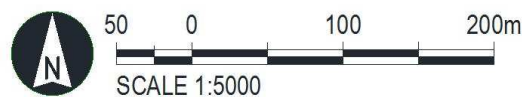




(a) Approved Design - Existing



(b) As-Con with Turning Head at RL~3.85m - Existing



Date: 24 January 2016 Version: 0 Job No: 247910

Port Botany Industrial Estate

Turning Head Flood Impact Assessment

Figure 7: 1% AEP Design and Turning Head Scenario 1 differences to Existing