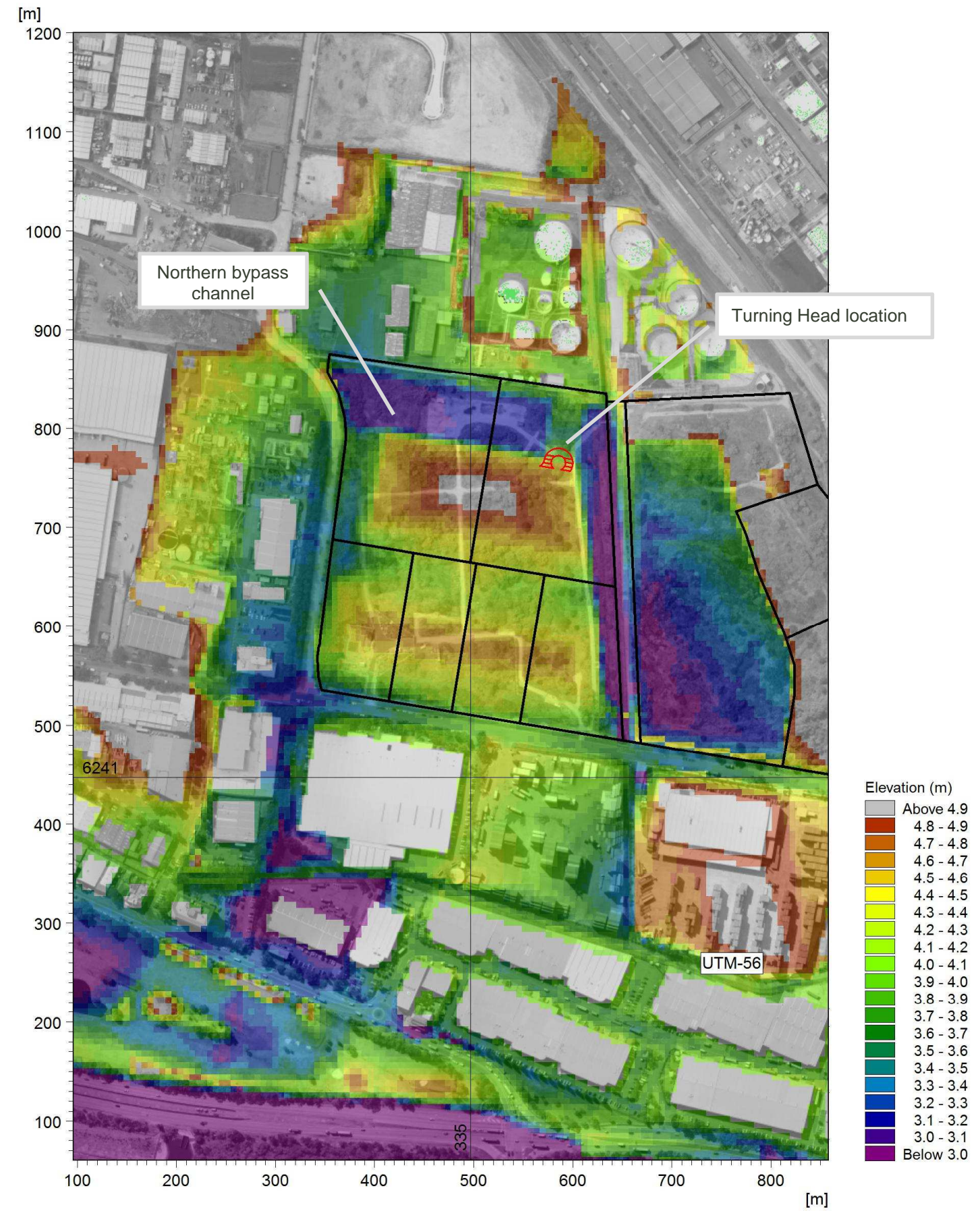
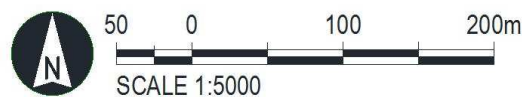


(a) Pre-Development



(b) As-Constructed



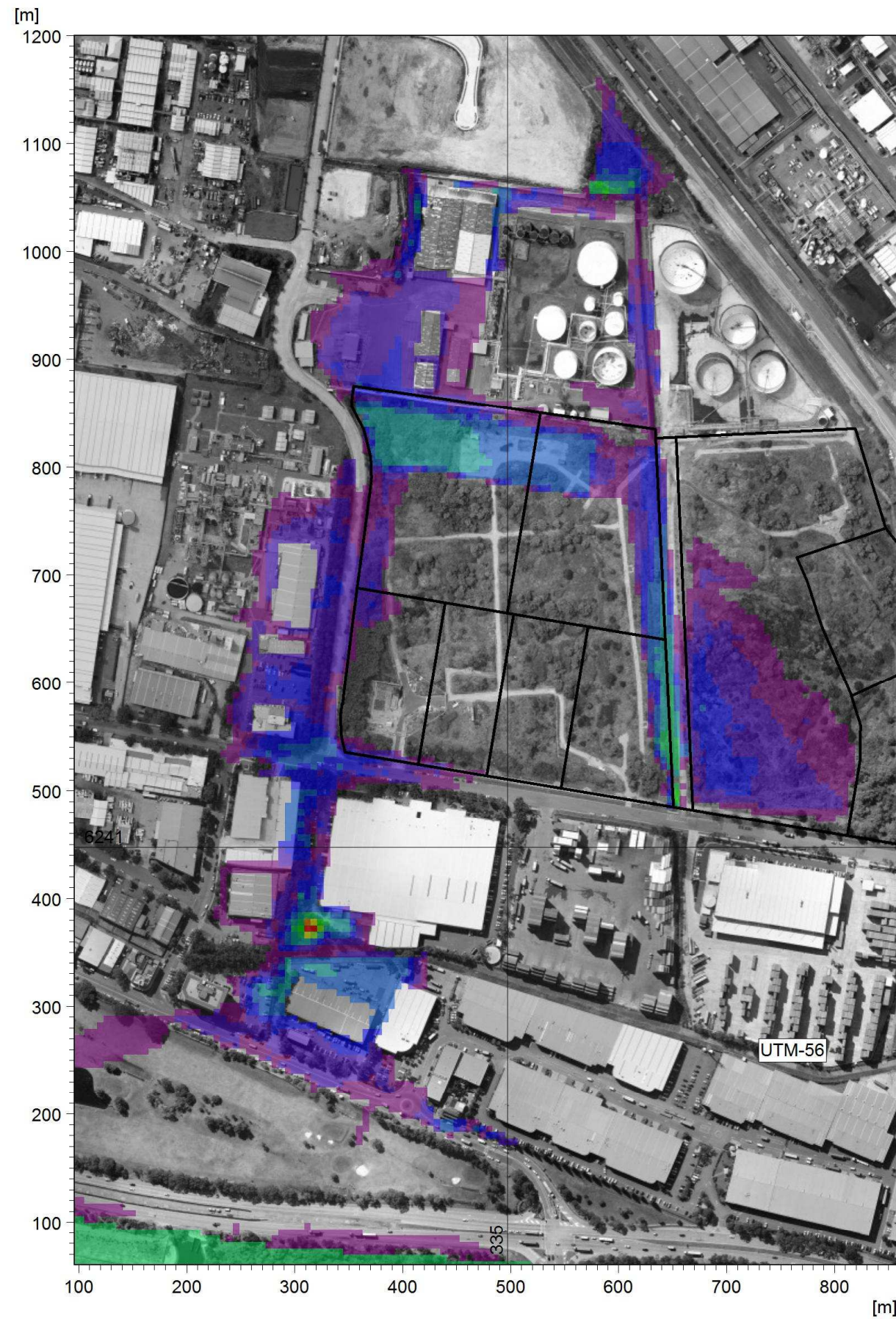
Date: 24 January 2016 Version: 0 Job No: 247910

Port Botany Industrial Estate

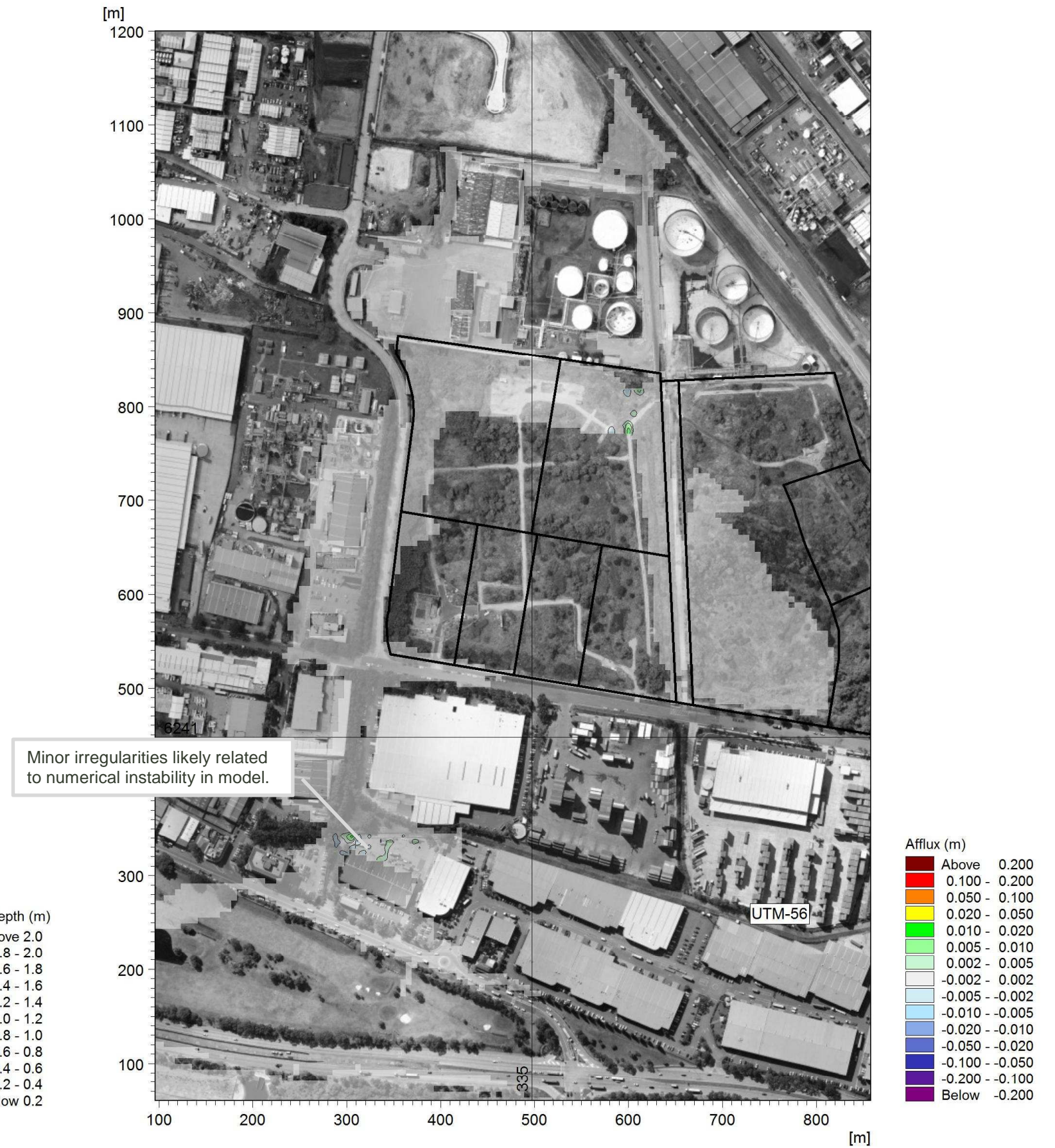
Turning Head Flood Impact Assessment

Figure 1: Topography



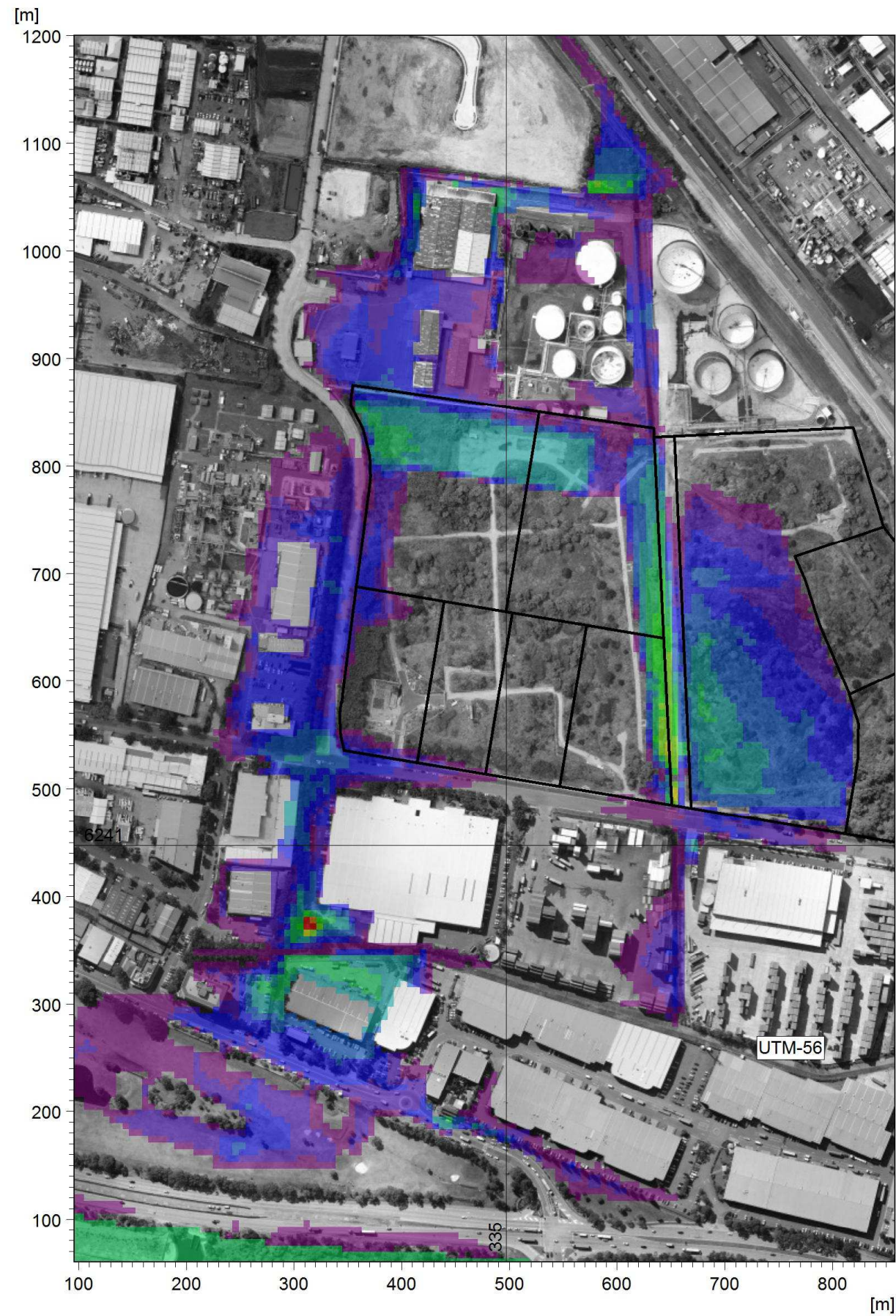


(a) As-Con with Turning Head at RL~3.85m (Scenario 1) Flow Depth

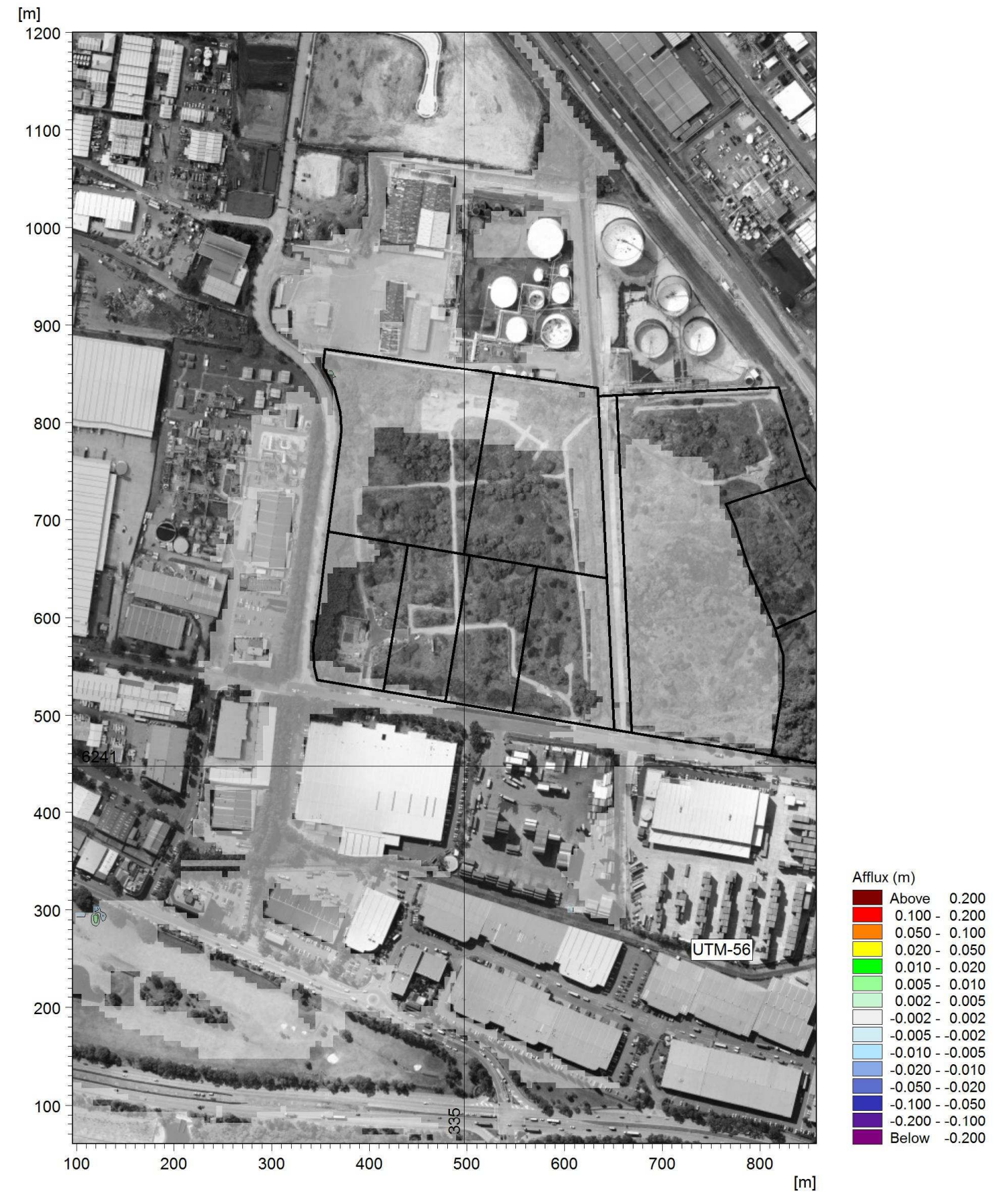


(b) As-Con with Turning Head at RL~3.85m (Scenario 1) - As Constructed



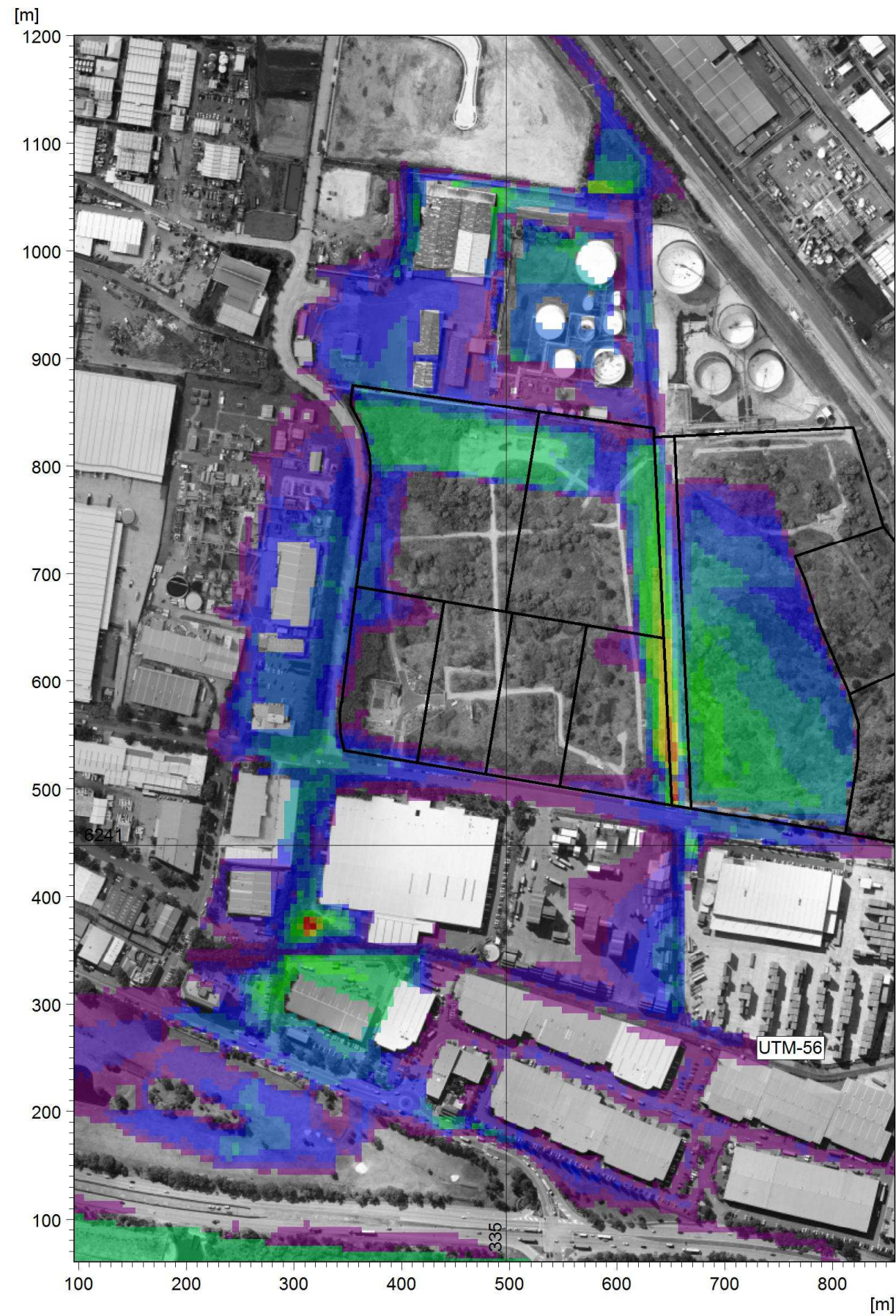


(a) As-Con with Turning Head at RL~3.85m (Scenario 1) Flow Depth

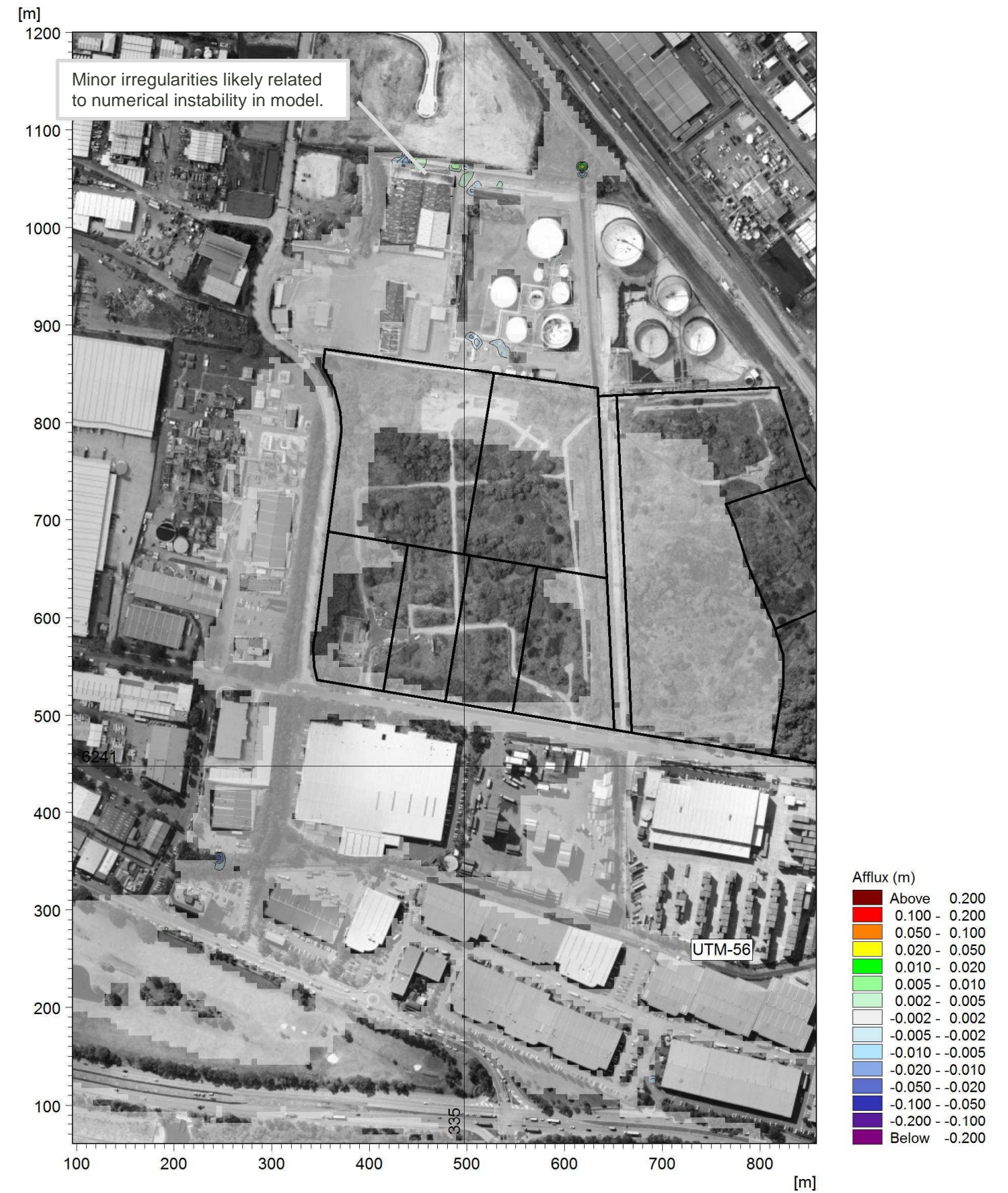


(b) As-Con with Turning Head at RL~3.85m (Scenario 1) - As Constructed





(a) As-Con with Turning Head at RL~3.85m (Scenario 1) Flow Depth



(b) As-Con with Turning Head at RL~3.85m (Scenario 1) - As Constructed