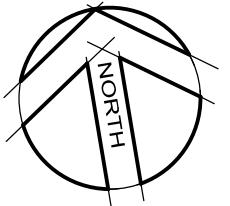
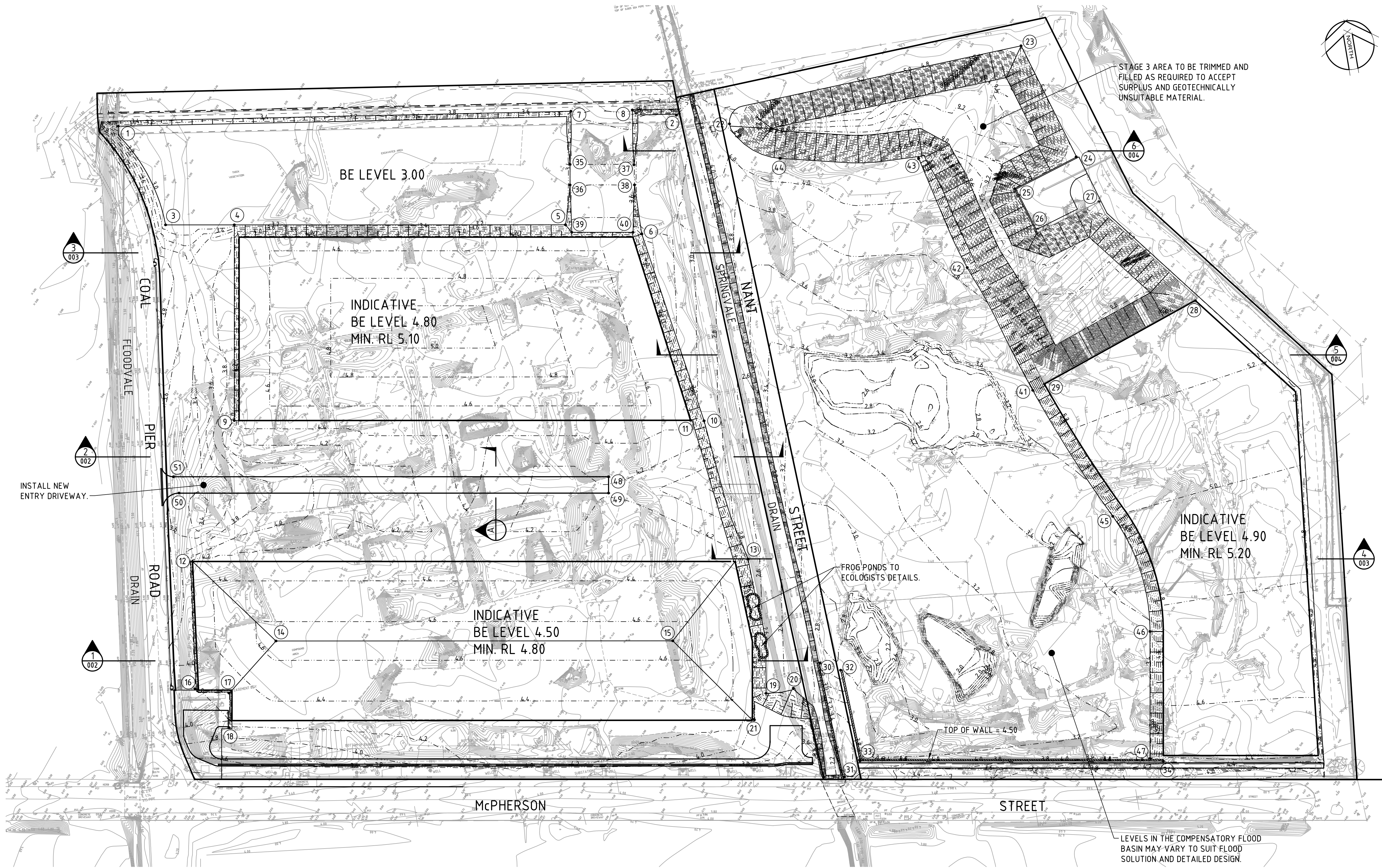


DATE PLOTTED: 24 January 2013 12:11 PM BY: DAVID BALL (SYDNEY)

XREF's: X-BH-A1-SHT; X-Contour Existing; X-Contour Design 200mm; X-Bulk; 12377A_DAO1_REV0_m; X-Base Layout; SITE_LEG; ACCESS ROAD_DETAILS
CAD FILE: C:\210094 - Southlands Worwest Civil\Drawings\DA\210094-DA-001(B) INDICATIVE BULK EARTHWORKS PLAN.dwg



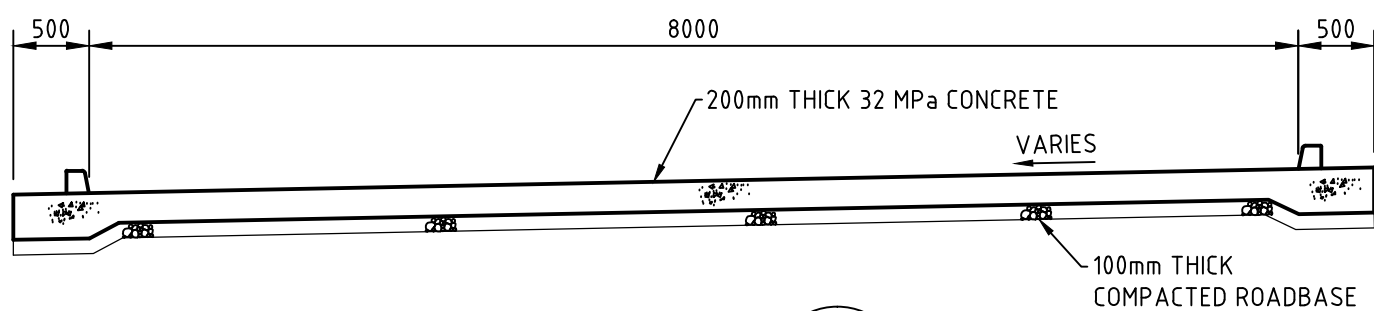
BULK EARTHWORKS SETOUT			
POINT No.	EASTING	NORTHING	FSL
1	334861.588	62414.07.751	3.20
2	335132.291	6241368.081	3.20
3	334876.521	6241356.209	3.20
4	334909.739	6241350.680	3.20
5	335069.823	6241324.031	3.20
6	335106.022	6241313.406	3.40
7	335081.665	6241378.484	3.60
8	335111.450	6241374.181	4.00
9	334893.983	6241256.073	4.00
10	335121.066	6241218.083	3.00
11	335114.547	6241219.436	4.40
12	334862.435	6241191.281	4.30
13	335131.213	6241147.714	2.80
14	334896.349	6241146.108	4.70
15	335088.210	6241114.216	4.70
16	334853.385	6241129.493	4.00
17	334869.433	6241124.709	4.00
18	334866.671	6241108.028	3.93
19	335129.078	6241081.292	2.60
20	335142.665	6241081.583	2.43
21	335121.283	6241069.457	4.00
22	335157.266	6241359.650	4.24
23	335304.516	6241373.906	5.07
24	335322.231	6241315.753	4.92
25	335289.996	6241305.283	4.41
26	335297.100	6241282.201	5.00
27	335329.615	6241292.208	5.20
28	335368.211	6241236.730	5.20
29	335288.561	6241208.508	5.20
30	335157.558	6241091.627	3.00
31	335160.211	6241034.606	3.60
32	335166.964	6241086.528	2.90
33	335169.004	6241041.068	3.60
34	335315.665	6241016.555	4.20
35	335076.915	6241352.859	3.40
36	335075.270	6241342.979	3.40
37	335107.818	6241347.539	3.40
38	335106.442	6241337.781	3.40
39	335072.282	6241319.908	4.00
40	335101.916	6241314.972	4.00
41	335282.434	6241206.337	3.80
42	335260.632	6241270.978	3.99
43	335245.958	6241327.799	4.20
44	335179.032	6241338.838	4.20
45	335310.961	6241138.937	3.60
46	335319.674	6241080.296	3.40
47	335309.461	6241018.858	3.40
48	335070.372	6241198.744	4.27
49	335069.057	6241190.853	4.20
50	334861.419	6241225.434	3.50
51	334860.031	6241233.775	3.50

LEGEND

- PROPOSED BULK EARTHWORKS CONTOUR
- BUILDING PLATFORMS
- SETOUT POINT

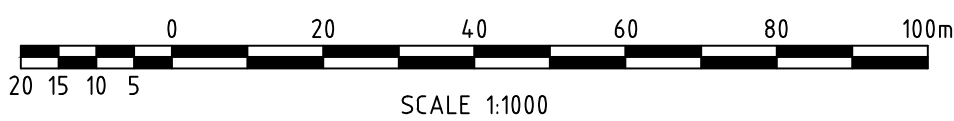
NOTE:

- LEVELS ARE INDICATIVE ONLY. EARTHWORKS LEVELS ON STAGE 1 MAY VARY TO SUIT A BALANCE OF CUT AND FILL AND FLOOD LEVELS.
- ALL BATTERS TO BE MAXIMUM 1:3 GRADIENT OR AS RECOMMENDED BY GEOTECHNICAL ENGINEER.



SECTION
SCALE 1:20

A



SCALE 1:1000

© Cardno Ltd 2011
All Rights Reserved.

This document is produced by Cardno Ltd solely for the benefit of and use by the client in accordance with the terms of the retainer. Cardno Ltd does not and shall not assume any responsibility or liability whatsoever to any third party arising out of any use or reliance by third party on the content of this document.



ABN: 95 001 145 035
Level 9, The Forum, 203 Pacific Highway, St Leonards, NSW Australia 2065
Phone (+61 2) 9436 7700 Fax (+61 2) 9499 3902
Email: Sydney@cardno.com.au Web: www.cardno.com.au



Quality
Endorsed
Company
AS 9001, Lic. 5960
Standards Australia

Drawn DJB	Date JAN'13	Client ORICA
Checked RL	Date JAN'13	
Designed RH	Date JAN'13	
Verified RL	Date JAN'13	
Approved RL	Date JAN'13	

SOUTHLANDS
INDUSTRIAL ESTATE
CIVIL WORKS PACKAGE
INDICATIVE BULK EARTHWORKS PLAN

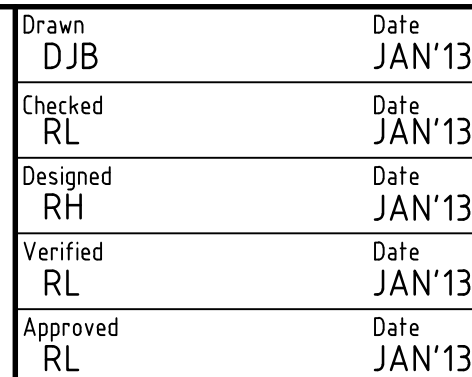
FOR APPROVAL

Date	Datum	Scale	Size
JAN'13	AHD	1:1000	A1
Drawing Number: 210094-DA-001			Revision B



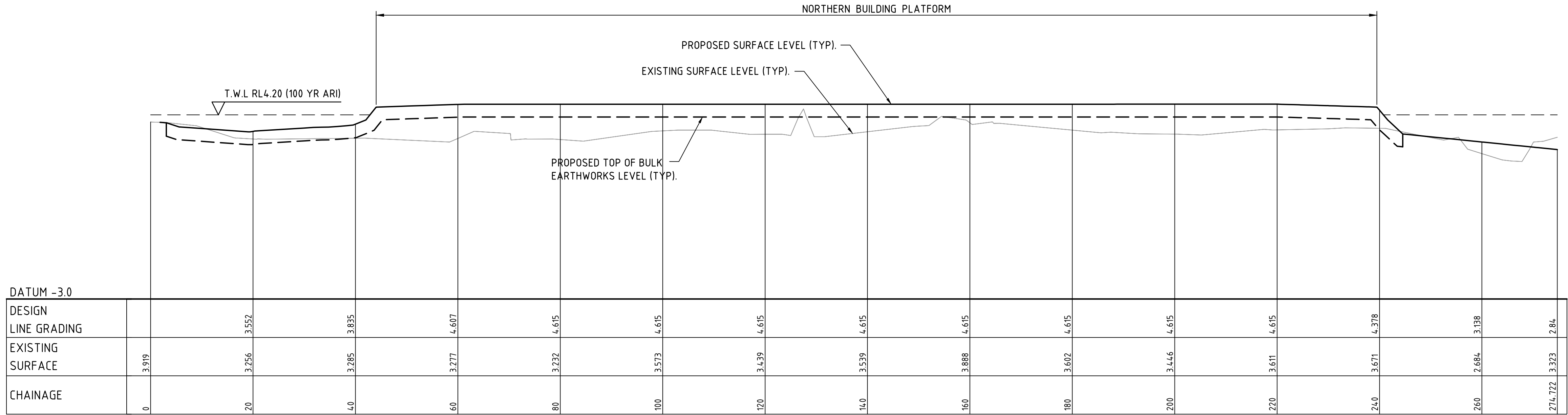
 **Cardno**

ABN: 95 001 145 035
Level 9, The Forum, 203 Pacific Highway, St Leonards, NSW
Australia 2065
Phone (+61 2) 9496 7700 Fax (+61 2) 9499 3902
Email: Sydney@cardno.com.au Web: www.cardno.com.au

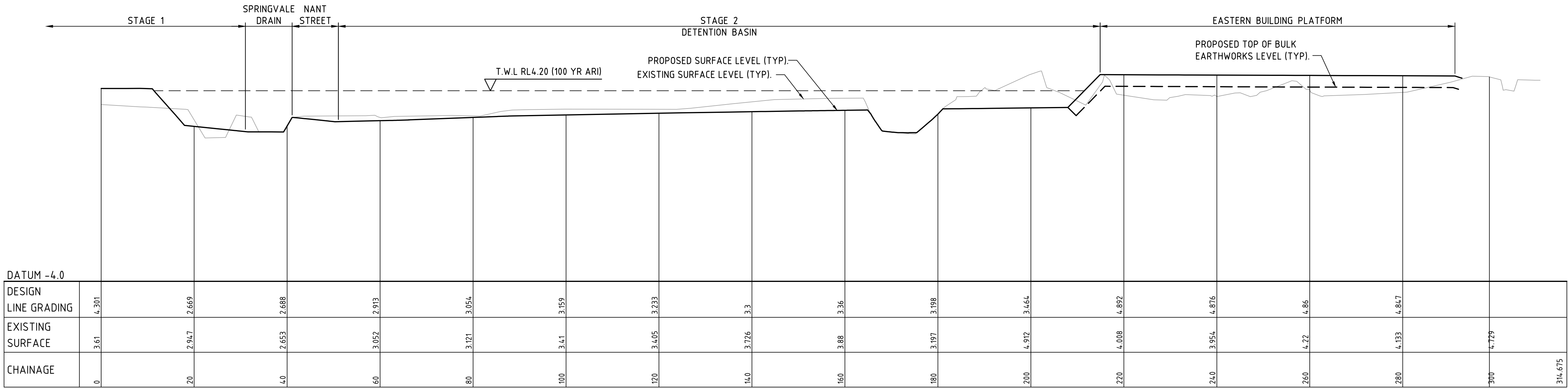


Status				FOR APPROVAL	
Date	JAN'13	Datum	AHD	Scale	AS SHOWN
				Size	A1
Drawing Number					Revision
210094-DA-002					B

0 10 20 30 40 50 60 70 80 90 100 110 120 130 140 150mm ON A1 ORIGINAL



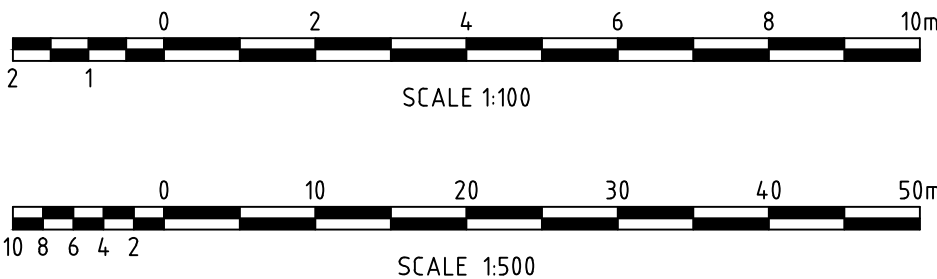
SECTION 3
HORIZONTAL SCALE 1:500
VERTICAL SCALE 1:100



SECTION 4
HORIZONTAL SCALE 1:500
VERTICAL SCALE 1:100

NOTE:
ALL LEVELS ARE INDICATIVE ONLY.
LEVELS MAY VARY TO SUIT A BALANCE
OF CUT AND FILL AND FLOOD LEVELS.

Rev	Date	Description	Drawn	Appr.
B	24.01.13	REISSUED FOR APPROVAL	DJB	RL
A	22.01.13	ISSUED FOR APPROVAL	DJB	RL



© Cardno Ltd 2011
All Rights Reserved.
This document is produced by Cardno Ltd solely for the benefit of and use by the client in accordance with the terms of the retainer. Cardno Ltd does not and shall not assume any responsibility or liability whatsoever to any third party arising out of any use or reliance by third party on the content of this document.

Cardno
ABN: 95 001 145 035
Level 9, The Forum, 203 Pacific Highway, St Leonards, NSW Australia 2065
Phone (+61 2) 94 96 7100 Fax (+61 2) 94 99 3902
Email: Sydney@cardno.com.au Web: www.cardno.com.au



Drawn DJB	Date JAN'13
Checked RL	Date JAN'13
Designed RH	Date JAN'13
Verified RL	Date JAN'13
Approved RL	Date JAN'13

Client ORICA SOUTHLANDS INDUSTRIAL ESTATE CIVIL WORKS PACKAGE INDICATIVE BULK EARTHWORKS SECTIONS - SHEET 2
--

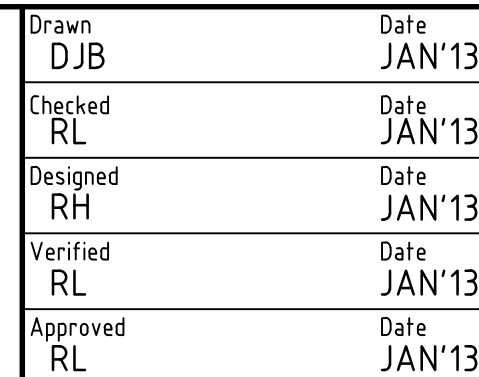
FOR APPROVAL			
Date JAN'13	Datum AHD	Scale AS SHOWN	Size A1
Drawing Number 210094-DA-003			Revision B



ALL LEVELS ARE INDICATIVE ONLY.
LEVELS MAY VARY TO SUIT A BALANCE
OF CUT AND FILL AND FLOOD LEVELS.



This document is produced by Cardno Ltd solely for the benefit of and use by the client in accordance with the terms of the retainer. Cardno Ltd does not and shall not assume any responsibility or liability whatsoever to any third party arising out of any use or reliance by third party on the content of this document.



SOUTHLANDS
INDUSTRIAL ESTATE
CIVIL WORKS PACKAGE
INDICATIVE BULK EARTHWORKS SECTIONS -
SHEET 3

Status	FOR APPROVAL
--------	--------------

Date JAN'13	Datum AHD	Scale AS SHOWN	Size A1
Drawing Number 210094-DA-004			Revision B

0 10 20 30 40 50 60 70 80 90 100 110 120 130 140 150mm ON A1 ORIGINAL