

# MULLANE PLANNING CONSULTANTS

PTY LIMITED ACN 089 318 561

*Innovation in Urban Planning & Development*

ABN: 14 089 318 561

**JOHN MULLANE, DIRECTOR**

Dip. T & CP (Syd.) MPIA  
Prof. Cert. Arbitration (Adelaide)

"Kerry Lodge"  
12 Mount Street  
Glenbrook 2773

P.O. Box 107  
Penrith 2751

[jmullane@pnc.com.au](mailto:jmullane@pnc.com.au)

Telephone:  
(0408) 961 839  
(02) 4739 6267

Fax:  
(02) 4739 9048

**REQUEST TO MODIFY  
PROJECT APPROVAL (06-185) – SITA  
ADVANCED WASTE TREATMENT  
FACILITY – VARIATION TO  
HOURS OF OPERATION –  
LOT 1 DP542395 AND  
LOT 740 DP810111, ELIZABETH DRIVE,  
KEMPS CREEK**

## **1.0**

### **THE REQUEST**

The request seeks to vary the external hours of operation of the SAWT from the current cessation of 6.00 pm, until 10.00 pm.

The Project Approval (Condition 12) specifies that outdoor operations shall only operate between 6.00 am and 6.00 pm (Monday – Friday) and 8.00 am till 5.00 pm (Saturday).

SITA Australia Pty Limited operates two developments on Lot 1 DP542395 and Lot 740 DP810111 (No 1725a) Elizabeth Drive, Badgerys Creek.

The first of those developments was approved as an Extraction of Clay, Shale Sandstone and Laminate and the Progressive Rehabilitation by Backfilling Quarried Areas with Solid, Non-Putrescible Waste ..... 2 November 1989 and subsequently modified 28 February 1992, 27 October 1993, 22 September 1999, 16 November 2001 and 9 November 2009 (the Landfill).

The second of the developments was approved 15 April 2008 by the Minister for Planning, pursuant to the provisions of Section 75J of the Environmental Planning & Assessment Act 1979, and granted approval to the SITA Advanced Waste Treatment Facility (SAWT).

The two developments are linked to the extent that the residual, inert, waste product produced by the SAWT is deposited in the landfill. This is the residual component of the SAWT process which has no value in the composted product, produced by the SAWT.

### 3.0

#### THE EXTENSION OF OPERATING HOURS

In order to facilitate more effective management of the SAWT facility, SITA wishes to remove 10 small truck loads of inert waste from the SAWT between the hours of 6.00 pm – 10.00 pm, which is after the current hours of operation conclude.

Removal of the inert material during this time will allow SITA to immediately commence receipt of the waste stream into the SAWT at the commencement of operations (6.00 am), rather than spend otherwise operational time, removing the inert material prior to operations commencing.

The truck which would remove the inert material and transfer same to the landfill is a small 6 tonne “hooklift” truck, and the route to the landfill is as indicated on the plans at Appendix i).

Between the hours of 9.00 pm and 10.00 pm, a spray machine known as a “Concover” machine would spray ground mulch onto the inert material transferred from the SAWT.

The spraying of the wet mulch mixture is to effectively secure a covering of the inert material until it is placed in the landfill the following day.

Again, in order to improve the operation of the SAWT, SITA wishes to also remove up to five or six loads of processed waste from the SAWT to the maturation beds in order to create effective space for the next day's operation.

Allied with this extension is the complimentary removal of five to six loads of composted material from the maturation beds back into the SAWT so as to facilitate bagging of the material early at the start of operations the next day.

The only obvious consideration in such a variation to the approved hours of operation is that related to any noise created by those operations. To that extent, Wilkinson Murray, Acoustic Consultants, has provided an assessment which concludes as follows:

*"The calculated evening noise levels are within the relevant criteria at all the receivers and for all wind conditions. Since Scenario 2 meets the criteria, it is concluded that Scenario 1 with half the number of fans also meets the noise criteria."*

The acoustic assessment appears as Appendix ii).

The approval and establishment of the SAWT represented a very significant step in meeting the Government's objective of reducing the volume of the waste stream which is currently directly fed into landfill, and, at the same time, converting a major proportion of the waste stream into an environmentally valuable set of by-products.

In this instance, SITA is simply seeking to improve the operation of the facility through the removal of 10 truckloads of inert waste material between 6.00 pm – 10.00 pm, and the removal and emplacement of composted material, within and without the SAWT facility during these hours.

These changes to operating hours have been assessed by Wilkinson Murray and found not to create any noise levels which would breach acceptable standards for such operations and conditions.

It is considered that those altered operating hours will not create any impact on surrounding land uses, and therefore the opportunity to improve operations on the site should be one which can be taken with enough certainty to know the public interest has been met.

I commend the variations to the Minister.

J S MULLANE

# Appendix i



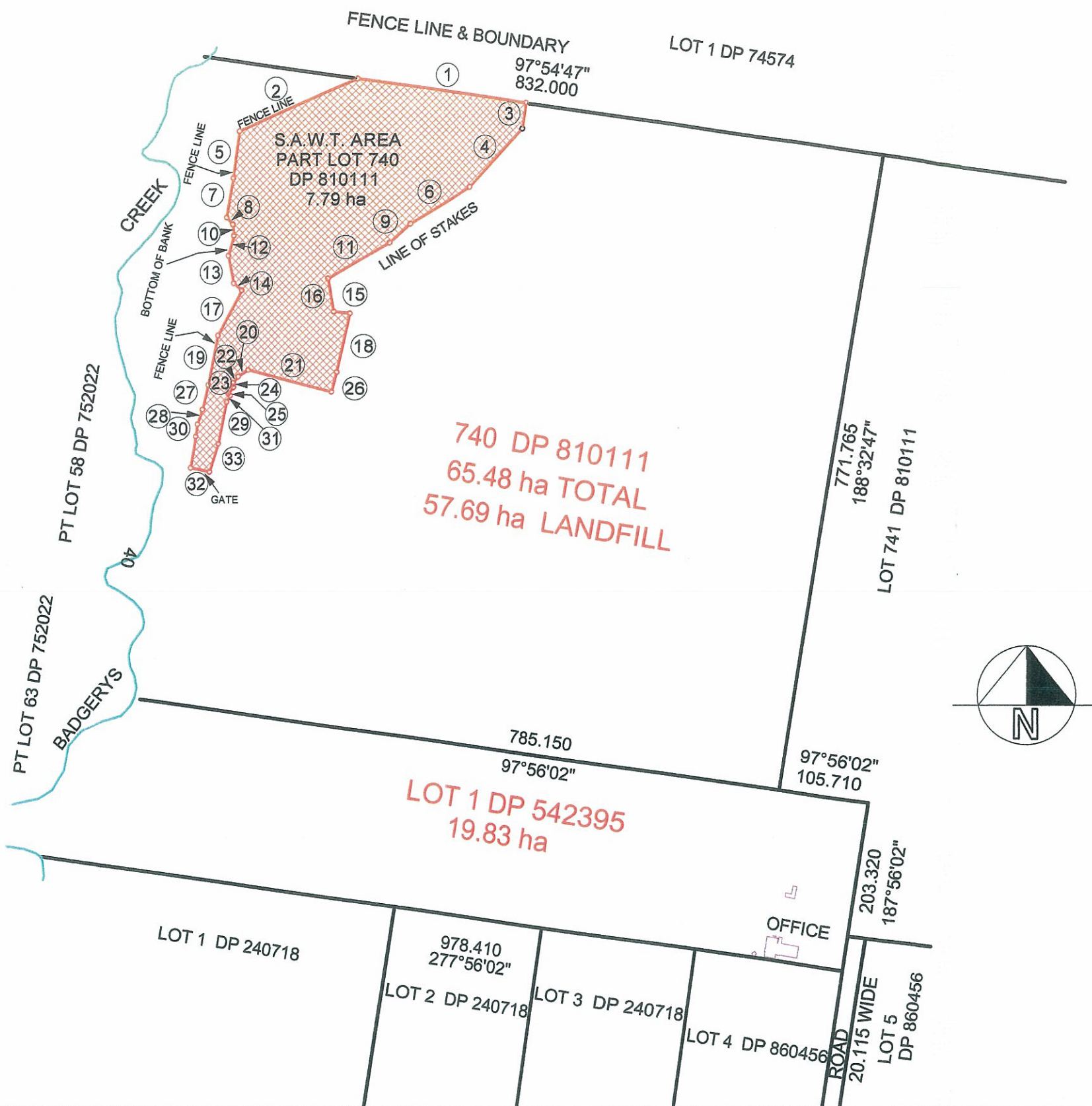
== Proposed SAWT Entry Road to landfill





FIGURE 2: Elizabeth Drive Landfill Site





**LINE TABLE**

Number	Bearing	Distance	Number	Bearing	Distance
1	277°54'47"	207.019	18	11°46'21"	71.849
2	66°15'05"	156.467	19	10°54'11"	60.328
3	187°54'47"	30.737	20	57°14'28"	15.256
4	43°18'17"	96.407	21	104°18'33"	105.993
5	7°03'18"	56.307	22	41°10'04"	9.679
6	58°37'33"	84.243	23	220°31'23"	9.931
7	9°22'45"	47.537	24	173°34'17"	5.313
8	316°42'32"	11.369	25	315°49'34"	3.613
9	46°30'01"	32.830	26	13°27'57"	24.257
10	353°37'19"	13.553	27	193°33'04"	30.245
11	58°35'30"	82.367	28	199°12'05"	18.826
12	15°17'54"	24.641	29	11°19'00"	50.815
13	348°15'18"	33.683	30	187°50'39"	14.786
14	309°32'16"	13.504	31	29°56'12"	9.021
15	276°40'39"	18.894	32	281°20'48"	24.006
16	349°47'35"	40.073	33	17°46'54"	35.304
17	28°36'10"	61.459			

PLAN SHOWING THE BOUNDARIES OF THE S.A.W.T. AREA  
 OVER PART OF LOT 740 DP 810111  
 SITA -ELIZABETH DRIVE KEMPS CREEK

SCALE 1:6000

DRAWN BY RW

**MATTHEW FREEBURN**  
**LAND, ENGINEERING & MINING**  
**SURVEYORS**  
**2/2 CASTLEREAGH STREET**  
**PENRITH 2750**

Ph 02-47212289

FAX 02-47215646

EMAIL: R.WARD@FREEBURNSURVEYORS.COM

DATE:  
 3.5.10

REFERENCE:  
 SITA-02.03.09

# Appendix ii