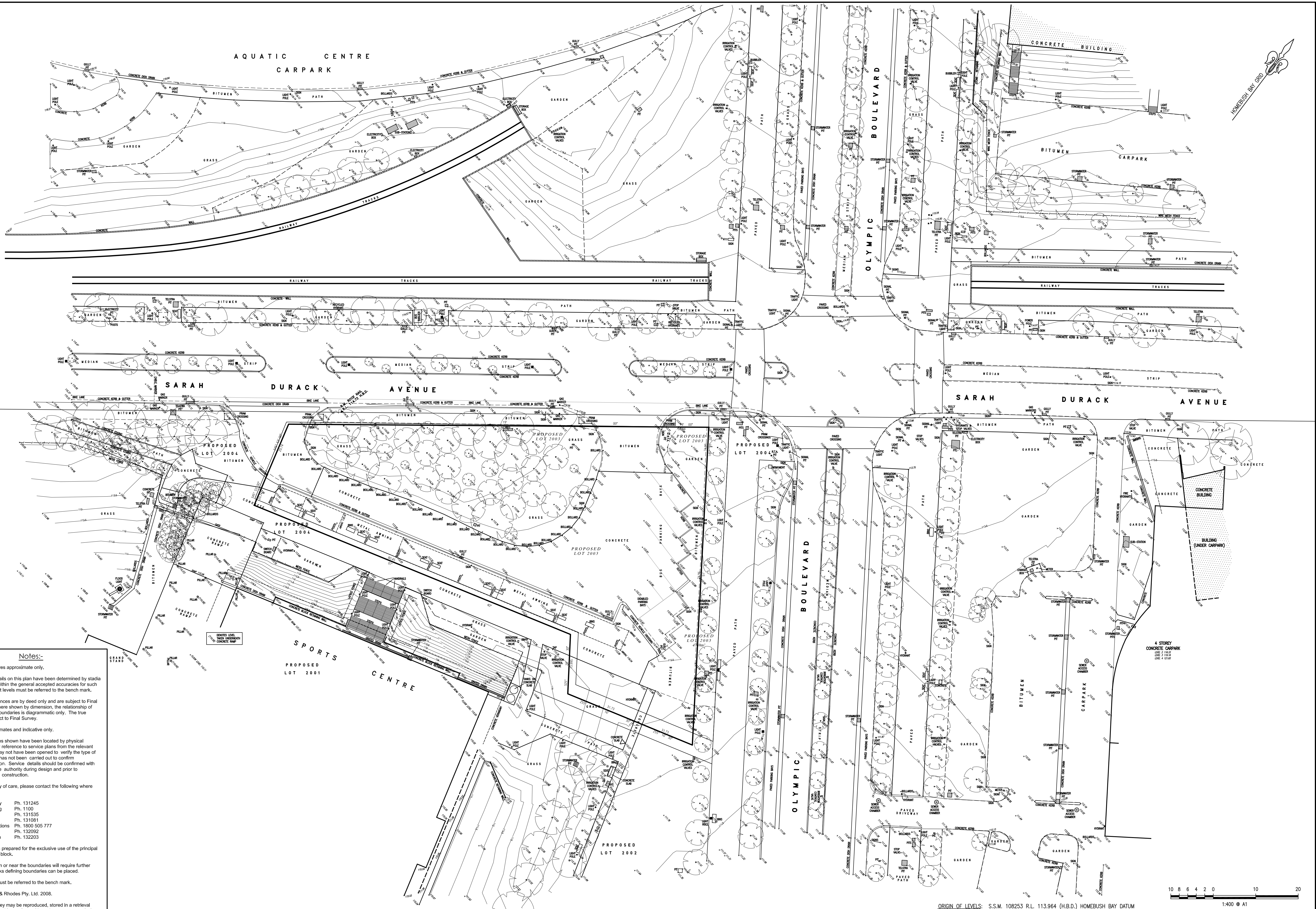


ATTACHMENT B

SITE SURVEY DRAWINGS

Prepared by

CRAIG and RHODES SURVEYORS



Notes:-

Location of structures approximate only.

The levels and details on this plan have been determined by staff methods and are within the general accepted accuracies for such surveys. All set out levels must be referred to the bench mark.

Bearings and Distances are by deed only and are subject to Final Survey. Except where shown by dimension, the relationship of improvements to boundaries is diagrammatic only. The true positions are subject to Final Survey.

Tree sizes are estimates and indicative only.

Services and utilities shown have been located by physical evidence and/or by reference to service plans from the relevant authorities. Pits may not have been opened to verify the type of utility. Excavation has not been carried out to confirm underground location. Service details should be confirmed with the relevant service authority during design and prior to commencement of construction.

As part of your duty of care, please contact the following where necessary :-

AGL Gas Company Ph. 131245
Dial Before You Dig Ph. 1100
Energy Australia Ph. 131535
Integral Energy Ph. 131081
Optus Communications Ph. 1800 505 777
Sydney Water Ph. 132092
Telstra Corporation Ph. 132203

This plan has been prepared for the exclusive use of the principal as listed in the title block.

Any construction on or near the boundaries will require further survey so that marks defining boundaries can be placed.

All set out levels must be referred to the bench mark.

© Copyright Craig & Rhodes Pty. Ltd. 2008.

No part of this survey may be reproduced, stored in a retrieval system or transmitted in any form without the express permission of the copyright owner except as permitted under the Copyright Act 1968.

Any permitted downloading, electronic storage, display, print, copy or reproduction of this survey should contain no alteration or addition to the original.

These notes must not be erased.

AMENDMENTS		
No.	Date	Description

Project: **DETAIL SURVEY OVER S.O.P.A. SITE 13 & SURROUNDS. LOT 201, D.P.1041756, HOMEBUSH.**

Principal:	A.V. JENNINGS		
Scale	1:400	Date	03.03.08
Datum	H.B.G.	L.G.A.	HOMEBUSH
Surveyed	T.G. & L.H.	Drawn	B.R.M.
		Checked	D.H.

ORIGIN OF LEVELS: S.S.M. 108253 R.L. 113.964 (H.B.D.) HOMEBUSH BAY DATUM

CRAG & RHODES
SURVEYORS PLANNERS CIVIL & STRUCTURAL ENGINEERS
INCORPORATING JOHN G. NELSON & ASSOCIATES AND COMPLETE CONSULTANTS

ABN 77 050 209 991
Level 4, Suite 400
15-18 Cambridge St
EPPING NSW 2121
PO Box 233
EPPING NSW 1710
reception@cragandrhodes.com.au
www.craigandrhodes.com.au
© Craig & Rhodes

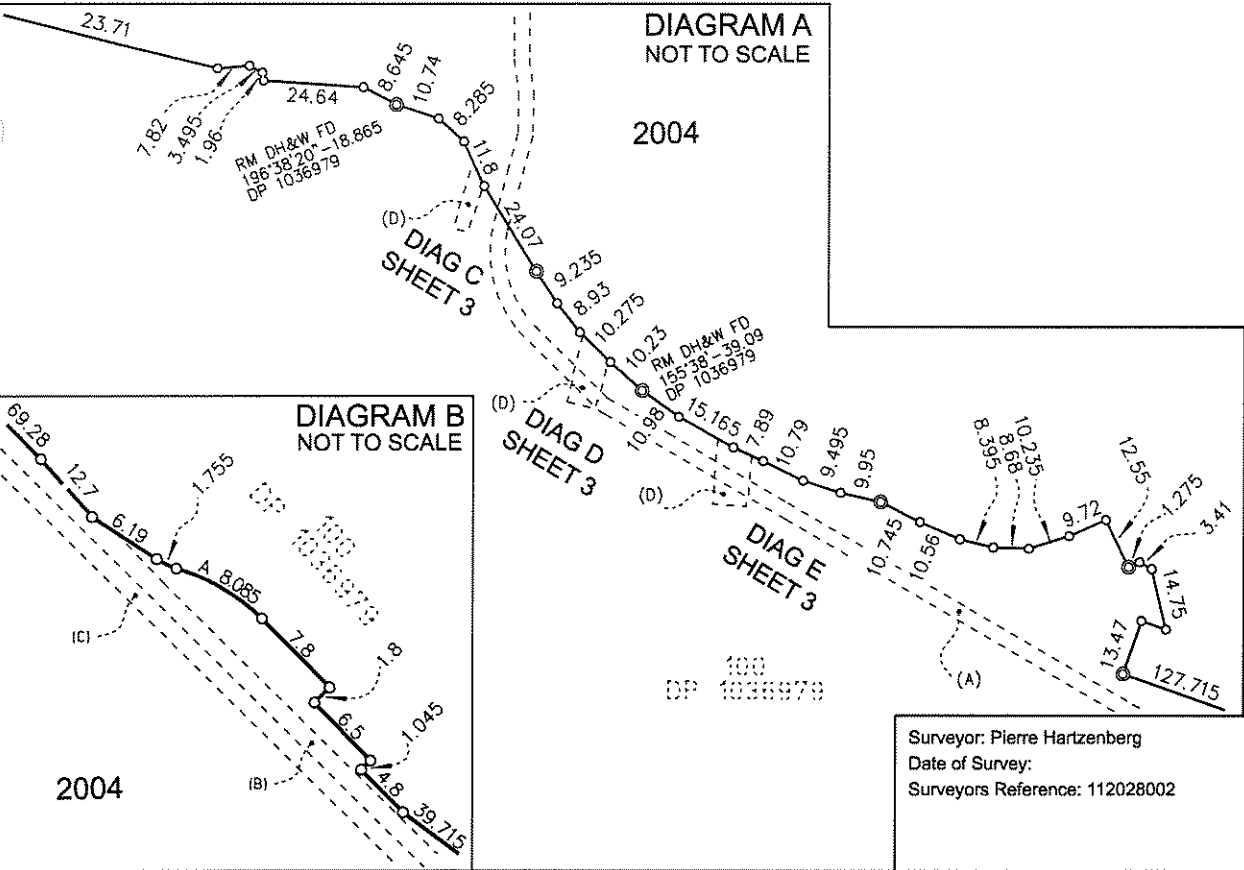
ACN 050 209 991
DX 4408 EPPING
Tel. 9669-1650
Fax. 9669-2341
reception@cragandrhodes.com.au
www.craigandrhodes.com.au
© Craig & Rhodes

Directory	Z:\233-06	Dwg. File	23306T3
Sheet No.	1	Our Ref.	233-06
of 1	Sheets		

10 8 6 4 2 0 10 20
1:400 @ A1

- A EASEMENT FOR UNDERGROUND ELECTRICITY CABLES 3.66' WIDE DEALING 7786255 DP 1012876
- B EASEMENT FOR UNDERGROUND TRANSMISSION LINE 4.5, 5, 7, 7.5, 9, 11, 12, & 36.575' WIDE & VARIABLE WIDTH (VIDE DP 1036982)
- C EASEMENT FOR DRAINAGE 9.0, 16.0' WIDE & VARIABLE VIDE DP 1036979
- D EASEMENT FOR SUPPORT OF ROAD BRIDGES AND FOOT BRIDGES VARIABLE WIDTH VIDE DP 1036979
- E EASEMENT FOR PIPELINE VIDE DEALING Q618732, DP 499007 (SHEET 10) DEALINGS Z946755, Z946756, Z946757 (DP 499008 SHEET 7)
- F EASEMENT FOR ELECTRICITY PURPOSES 2.44' WIDE VIDE DEALING No. J937238 (DP 223082)
- G EASEMENT FOR ELECTRICITY MAINS 3.05' WIDE VIDE D40474 (DP 430149)
- H EASEMENT FOR ELECTRICITY PURPOSES 3.05' WIDE VIDE D928745 (DP 106717)
- J EASEMENT FOR GAS PIPELINE 3.05' WIDE VIDE F708337 (DP 448654)

SURVEYING REGULATION 2006: CLAUSE 35(1)(B) & 61(2)									
MARK	MGA CO-ORDINATES		ZONE	CLASS	ORDER	ORIGIN	RL AHD	CLASS	ORDER
	EASTING	NORTHING							
SSM 67055	321 182.920	6 252 149.753	56	B	2	SCIMS	10.915	LC	L3
SSM 108240	321 211.730	6 252 445.345	56	B	2	SCIMS			
SSM 108246	321 587.237	6 252 711.887	56	B	2	SCIMS			
SSM 108247	321 066.698	6 252 278.963	56	B	2	SCIMS			
SSM 108253	321 446.249	6 252 591.009	56	B	2	SCIMS			
SSM 125676	321 320.055	6 252 498.981	56	B	2	SCIMS			
SSM 125927	321 308.217	6 252 124.591	56	B	2	SCIMS			
SSM 125929	321 452.640	6 252 236.227	56	B	2	SCIMS			
SSM 125930	321 580.056	6 252 347.461	56	B	2	SCIMS			
SOURCE: MGA CO-ORDINATES ADOPTED FROM SCIMS ON THE 14th AUGUST 2007									
COMBINED SEA LEVEL & SCALE FACTOR=0.999993									



Surveyor: Pierre Hartzenberg
Date of Survey:
Surveyors Reference: 112028002

PLAN OF SUBDIVISION OF LOT 201 IN
DP 1041756

L.G.A.: AUBURN
Locality: HOMEBUSH BAY
Subdivision No:

Registered

D.P.

Lengths are in metres. Reduction Ratio 1:2500