

ANNEXURE C

EROSION AND SEDIMENT CONTROLS

Prepared by
M+G Consulting

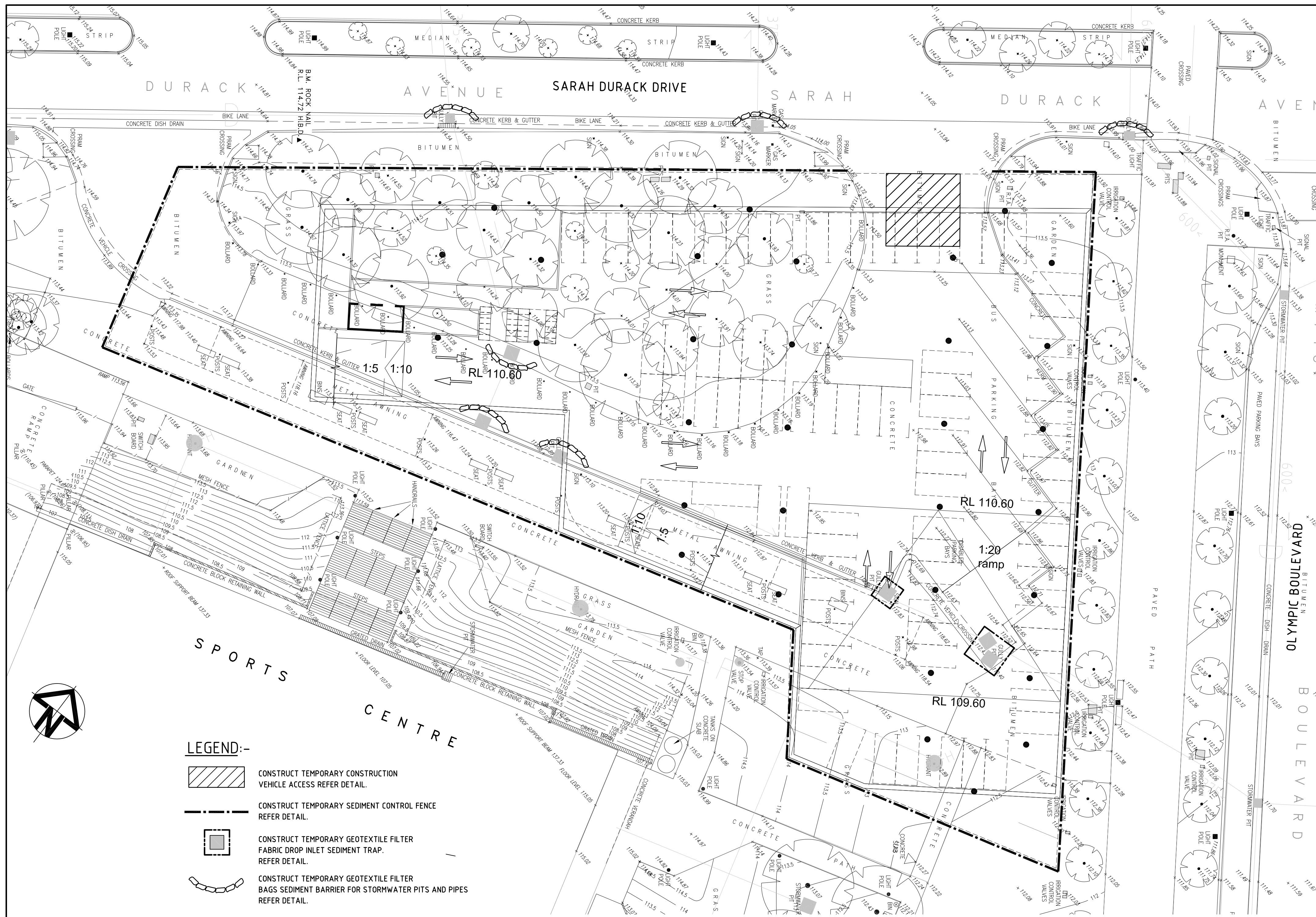
SEDIMENT AND EROSION CONTROL NOTES

SEDIMENT RUN-OFF CONTROL NOTES

1. THIS IS A CONCEPTUAL SOIL AND WATER MANAGEMENT PLAN(SWMP) ONLY, AND SHOWS A POSSIBLE WAY OF MANAGING SOIL EROSION. THE CONTRACTOR SHALL PREPARE A DETAILED PLAN AND OBTAIN APPROVAL FROM THE RELEVANT AUTHORITY - PRIOR TO ANY WORKS.
2. THIS PLAN IS TO BE READ WITH THE ENGINEERING PLANS, AND ANY OTHER PLANS, WRITTEN INSTRUCTIONS, SPECIFICATIONS OR DOCUMENTATION THAT MAY BE ISSUED AND RELATING TO DEVELOPMENT OF THE SUBJECT SITE.
3. ALL BUILDERS AND SUB-CONTRACTORS SHALL BE INFORMED OF THEIR RESPONSIBILITIES IN MINIMISING THE POTENTIAL FOR SOIL EROSION AND POLLUTION TO DOWNSLOPE LANDS AND WATERWAYS.
4. WATER WILL BE PREVENTED FROM ENTERING THE PERMANENT DRAINAGE SYSTEM UNLESS IT IS RELATIVELY SEDIMENT FREE i.e THE CATCHMENT AREA HAS BEEN PERMANENTLY LANDSCAPED AND/OR LIKELY SEDIMENT HAS BEEN FILTERED THROUGH AN APPROVED STRUCTURE.
5. THE CONTRACTOR SHALL INSTALL AND MAINTAIN SOIL EROSION AND SEDIMENT CONTROL MEASURES IN ACCORDANCE WITH THE REQUIREMENTS OF COUNCIL AND MEETING ALL EPA REQUIREMENTS
6. GRADE FINISHED SURFACE TO SHED WATER EVENLY WITHOUT CHANNELLING (UNTIL PIPED STORMWATER SYSTEM IS CONSTRUCTED).
7. MAINTAIN THE EROSION CONTROL DEVICES INDICATED ON THE DRAWINGS THROUGHOUT DURATION OF THE PROJECT.
8. WHEN PROPOSED STORMWATER PITS ARE CONSTRUCTED, PREVENT SITE RUNOFF ENTERING UNLESS SILT FENCES ARE ERECTED AROUND PITS.
9. DUST PREVENTION: THROUGHOUT CONSTRUCTION, DUST PRODUCING SURFACES MUST BE LIGHTLY WATERED AS REQUIRED TO PREVENT EXCESSIVE DUST GENERATION. WATERING SHOULD BE REGULATED TO ENSURE THAT RUN-OFF DOES NOT OCCUR.

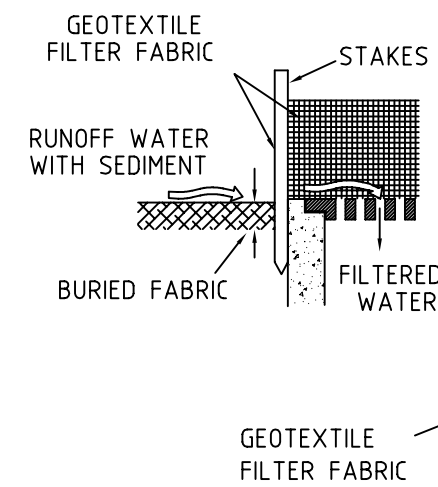
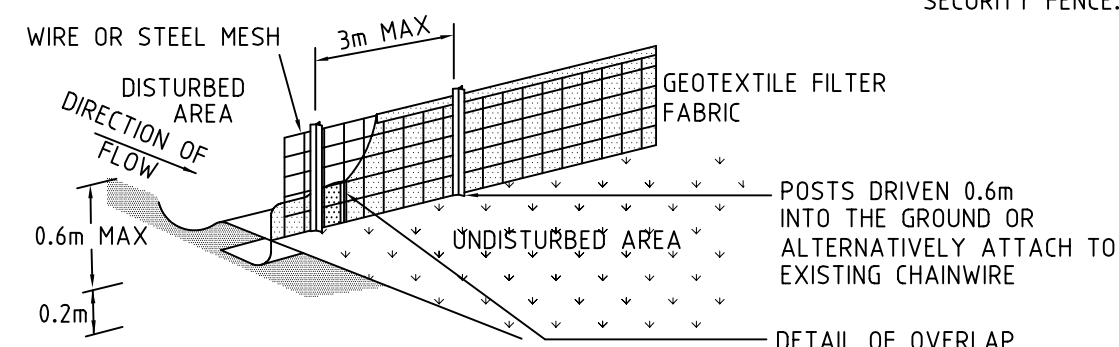
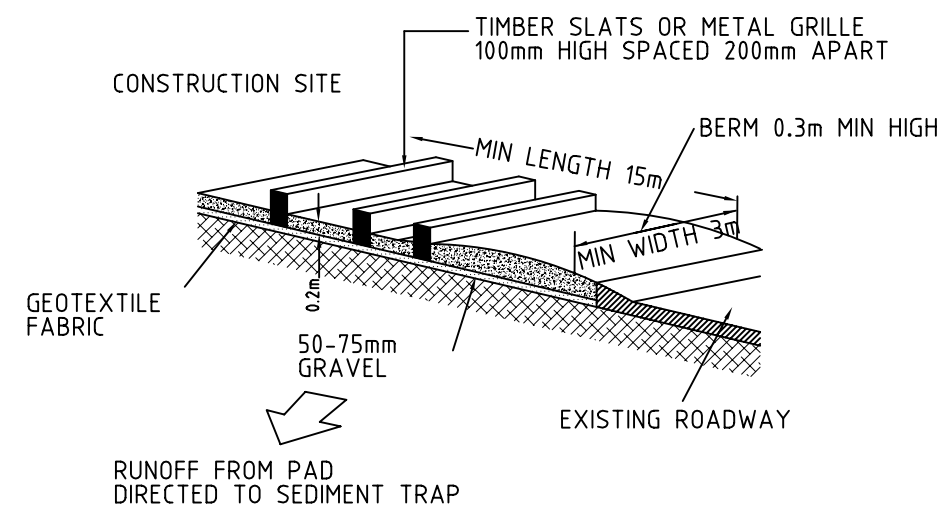
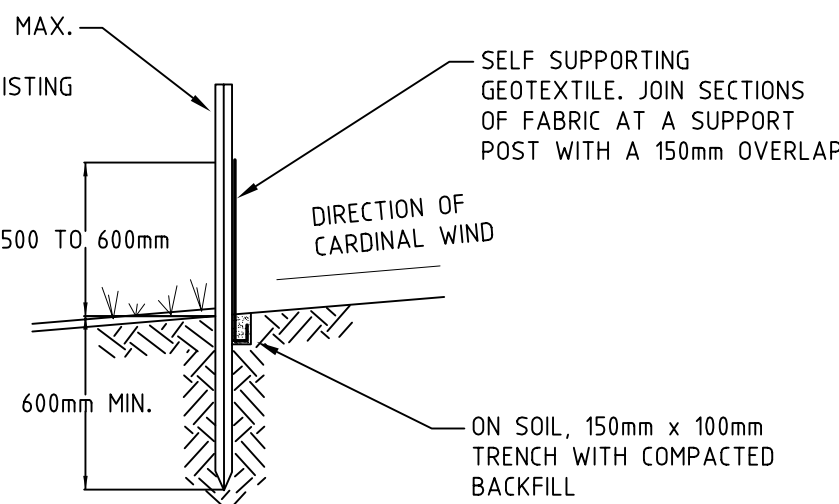
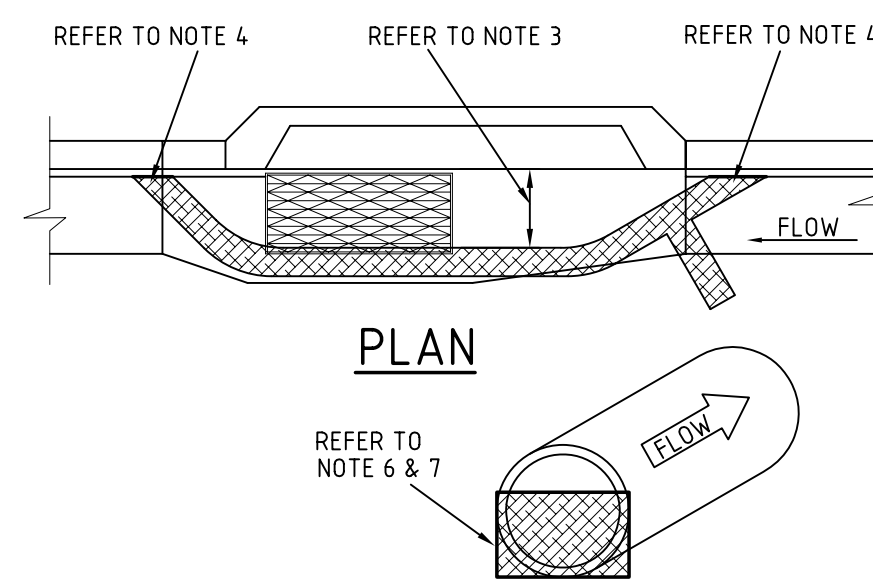
GENERAL NOTES

1. ALL WORKS ARE TO BE UNDERTAKEN WITH SEDIMENT AND EROSION MEASURES IN ACCORDANCE WITH COUNCILS REQUIREMENTS AND MEETING ALL EPA REQUIREMENTS.
2. THE CONTRACTOR SHALL LOCATE ALL EXISTING SERVICES PRIOR TO COMMENCING CONSTRUCTION AND PROTECT AND MAKE ARRANGEMENTS WITH THE RELEVANT AUTHORITY TO RELOCATE AND/OR ADJUST IF NECESSARY. INFORMATION GIVEN ON THE DRAWINGS IN RESPECT TO SERVICE IS FOR GUIDANCE.
3. CONTRACTOR IS NOT TO ENTER UPON NOR DO ANY WORK WITHIN ADJACENT LANDS WITHOUT THE PERMISSION OF THE OWNER.
4. ALL SITE REGARDING AREAS SHALL BE FINALLY GRADED IN ACCORDANCE WITH THE BULK EARTHWORKS DRAWINGS.
5. ALL LEVELS ARE TO AHD
- ALL LEVELS ARE IN METRES AND DIMENSIONS IN MILLIMETRES.



LEGEND:-

- CONSTRUCT TEMPORARY CONSTRUCTION VEHICLE ACCESS REFER DETAIL.
- CONSTRUCT TEMPORARY SEDIMENT CONTROL FENCE REFER DETAIL.
- CONSTRUCT TEMPORARY GEOTEXTILE FILTER FABRIC DROP INLET SEDIMENT TRAP. REFER DETAIL.
- CONSTRUCT TEMPORARY GEOTEXTILE FILTER BAGS SEDIMENT BARRIER FOR STORMWATER PITS AND PIPES REFER DETAIL.

SEDIMENT AND EROSION CONTROL PLAN
SCALE 1:250GEOTEXTILE FILTER FABRIC DROP INLET
SEDIMENT TRAP
NTSSEDIMENT CONTROL FENCE
NTSTEMPORARY CONSTRUCTION VEHICLE EXIT
MAINTENANCE:-
NTS
THE TEMPORARY ACCESS SHALL BE MAINTAINED IN A CONDITION THAT PREVENTS TRACKING OR FLOWING OF SEDIMENT ONTO PUBLIC RIGHTS OF WAY. THIS MAY REQUIRE PERIODIC TOP DRESSING WITH ADDITIONAL GRAVEL AS CONDITIONS DEMAND AND REPAIR AND/OR CLEANOUT OF ANY MEASURES USED TO TRAP SEDIMENT. ALL SEDIMENT SPILLED, DROPPED, WASHED OR TRACKED ONTO PUBLIC RIGHTS OF WAY MUST BE REMOVED.

GEOTEXTILE FILTER BAGS

SEDIMENT BARRIER FOR STORMWATER PITS & PIPES
NOTES:-

1. SLEEVES OR SLEAVES ARE TO BE MADE FROM GEOTEXTILE FABRIC LONGER THEN THE LENGTH OF THE INLET PIT.
2. FILL SLEEVE WITH 5 OR 10mm CLEAN GRAVEL.
3. PLACE THE SLEEVE AT THE OPENING OF THE KERB INLET LEAVING A 100mm GAP TO ACT AS AN EMERGENCY OVERFLOW.
4. SLEEVE MUST BE PLACED AGAINST THE KERB TO PREVENT BYPASS.
5. FIT SLEEVE TO ALL INLETS DOWNSTREAM OF THE WORKS.
6. FOR DRAINAGE WORKS FIT GEOTEXTILE FABRIC OR GEO BAGS TO UPSTREAM FACE OF ALL OPEN PIPES.
7. MAINTAIN AN OPENING AT THE TOP OF THE PIPE OF 1/3 OF THE PIPE DIAMETER.
8. THE FILTERS ARE TO BE CLEANED AND MAINTAINED DAILY.
9. ALL CARE SHOULD BE TAKEN TO MINIMISE SEDIMENT REACHING THE STORMWATER SYSTEM BY MINIMISING EXCAVATION WORKS AND PREVENTING EXCESS WATER FLOW THROUGH WORKS.

1	ISSUED FOR APPROVAL	04-03-08			
No.	REVISION	DATE	No.	REVISION	DATE

ARCHITECT

BATESSMART™

PROJECT

Sydney Olympic Park
Site 13

CLIENT

AVJennings

LEVEL 2, 11 - 13 BROOKHOLLOW AVENUE BAULKHAM HILLS
PH 02 9846 6400 F 02 9846 6401

M+G Consulting

M & G CONSULTING ENGINEERS PTY LTD
ABN 65 094 864 990Level 3, 110 Pacific Highway
North Sydney NSW 2060
PO Box 1656 North Sydney NSW 2059Tel: +61 (0)2 8920 3966
Fax: +61 (0)2 8920 3977
Email: cad@mg.com.au

TITLE

SEDIMENT & EROSION CONTROL
CONCEPT PLAN & DETAILS

DRAWN	DESIGNED	REVIEWED	DATE	SCALE
SCM	SCM	---	MAR 2008	1:250 AT A1
JOB No.	DRAWING No.			
2890	C02			1 ISSUE