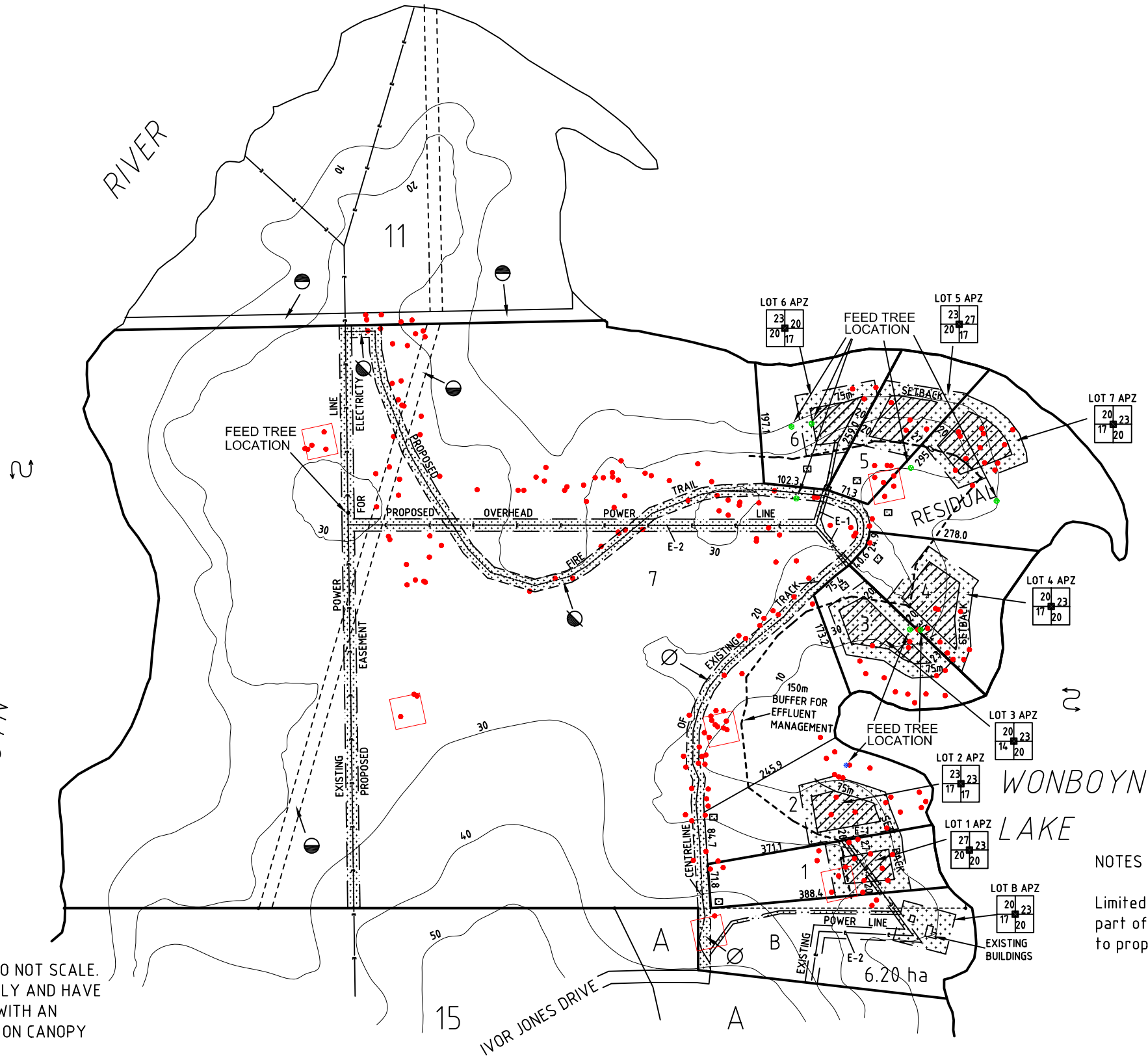


## **ATTACHMENT 5.6**

### **Plan Showing Hollow Bearing and Feed Trees**



- NOTE:
- TREE LOCATIONS ARE NOT ACCURATE DO NOT SCALE. LOCATION OF TREES ARE INDICATIVE ONLY AND HAVE BEEN DETERMINED BY HAND HELD GPS WITH AN ACCURACY OF +/- 3 TO 15m DEPENDING ON CANOPY COVER.
- E-2 PROPOSED EASEMENT FOR ELECTRICITY 20 WIDE
  - E-1 PROPOSED UNDERGROUND POWER LINE AND EASEMENT FOR ELECTRICITY 10 WIDE
  - Ø PROPOSED RIGHT OF CARRIAGEWAY 20m WIDE
  - PROPOSED RIGHT OF CARRIAGEWAY 20m WIDE
  - RESERVED ROAD 20.115m WIDE
  - PUBLIC ROAD 20.115m WIDE & VAR.

PLAN OF POTENTIAL AREAS TO BE DISTURBED RESULTING FROM SUBDIVISION OF PORTION 14 PLUS BOUNDARY ADJUSTMENT OF LOT B IN DP 33573 AT PICNIC POINT, WONBOYN LAKE

FOR PICNIC POINT PTY LTD OWNER



PO BOX 639  
35 FLINDERS STREET  
EDEN NSW 2551  
PHONE: (02) 6496 3418  
FAX: (02) 6496 2259  
E-MAIL: property@rwsurveying.com

- NOTES
- Limited vegetation removal and only where necessary as part of the road construction and provision of electricity to proposed lots.
- REV 6 30-04-2010 NOTES ADDED, FIRE TRAIL RE-ALIGNED
  - REV 5 27-04-2010 TREE LOCATIONS REVISED TREE TYPES REVISED
  - REV 4 01-04-2010 POSITION OF HOLLOW BEARING TREES ADDED
  - REV 3 15-06-2009 POSITION OF HOLLOW BEARING TREES ADDED
  - REV 2 09-02-2009 BUILDING ENVELOPE LOT 2 AMENDED
  - REV 1 21-01-2009 BDY LOTS 1 & 2 CHANGED, BUILDING ENVELOPES AND APZ'S FOR LOTS 1, 2, 4, 5, 6 & 7 AMENDED

LEVEL DATUM  
CONTOUR INFORMATION  
PREPARED FROM KIAH 1:25000  
TOPOGRAPHIC MAP

SCALE	DATE	DRN.	CHK.	SIZE	REV.
1:8000	30-04-2010	SB	MS	A3	
REFERENCE/DRAWING NAME					
0833 H SHEET 1 OF 2					6

