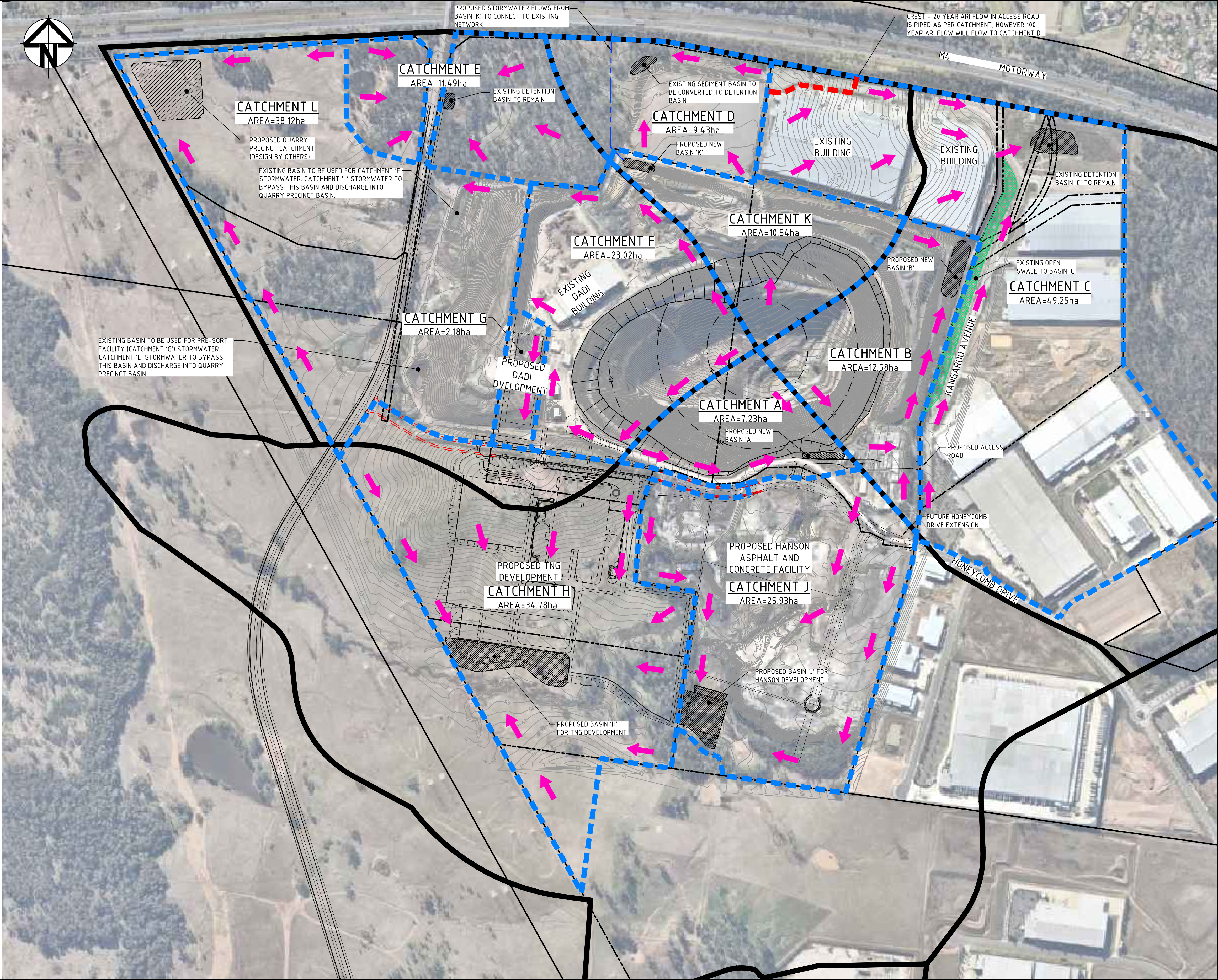
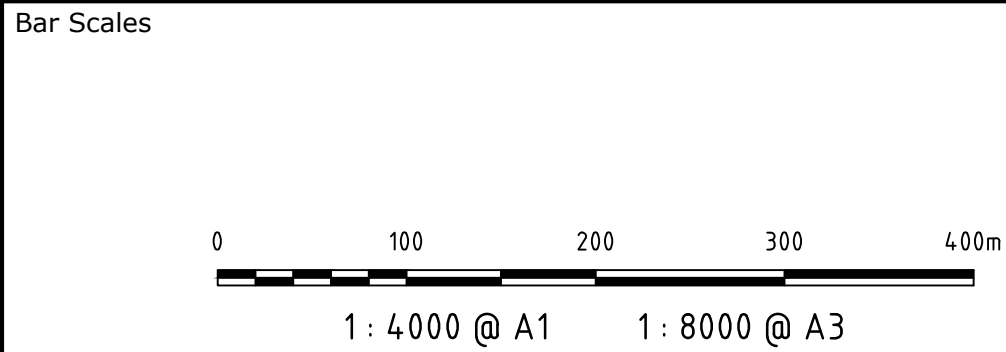


CATCHMENT	AREA	VOLUME REQUIRED FOR OSD	SURFACE AREA REQUIRED FOR BIO-RETENTION
A	7.23ha	2,510m ³	730m ²
B	12.58ha	4,300m ³	1,320m ²
C	49.25ha	-	-
D	9.43ha	3,300m ³	950m ²
E	11.49ha	-	-
F	23.02ha	8,300m ³	2,400m ²
G	2.18ha	760m ³	220m ²
H	34.78ha	12,080m ³	3,510m ²
J	25.93ha	UNKNOWN	UNKNOWN
K	10.54ha	3,600m ³	1,070m ²
L	38.12ha	13,250m ³	3,840m ²

- NOTE:
1. SIZE OF OSD/BIO-RETENTION BASINS BASED ON ASSUMPTION THAT CATCHMENT WILL BE 80% IMPERVIOUS AREA.
 2. CALCULATIONS AS PER BLACKTOWN CITY COUNCIL SEPP No.59.
 3. WSUD TARGET REDUCTION REQUIREMENTS;
 - 85% TOTAL SUSPENDED SOLIDS (TSS)
 - 65% TOTAL PHOSPHORUS (TP)
 - 45% TOTAL NITROGEN (TN)
 - 90% TOTAL HYDROCARBONS
 - 90% GROSS POLLUTANTS
 4. CATCHMENTS 'C' AND 'E' WILL NOT BE ALTERED. EXISTING BASINS ARE ASSUMED SUFFICIENT.
 5. CATCHMENT 'J' IS ASSUMED TO DRAIN TO BASIN 'J' AND HAS BEEN ASSIGNED ACCORDINGLY.



Issue	Description	Date
P6	ISSUED FOR INFORMATION	26-10-15
P5	ISSUED FOR INFORMATION	12-10-15
P4	ISSUED FOR INFORMATION	18-09-15
P3	ISSUED FOR INFORMATION	01-09-15
P2	ISSUED FOR INFORMATION	28-08-15
P1	ISSUED FOR INFORMATION	24-08-15



THIS DRAWING CANNOT BE COPIED OR REPRODUCED IN ANY FORM OR USED FOR ANY OTHER PURPOSE OTHER THAN THAT ORIGINALLY INTENDED WITHOUT THE WRITTEN PERMISSION OF AT&L



Client	Drawn	ASD
	Designed	ASD
	Checked	AT
	Approved	

Project	GENESIS XERO WASTE FACILITY EASTERN CREEK
Title	PROPOSED FUTURE STORMWATER MANAGEMENT PLAN

Civil Engineers and Project Managers	at&l	FOR INFORMATION NOT TO BE USED FOR CONSTRUCTION	A1
Suite 702, 154 Pacific Hwy St Leonards NSW 2065 ABN 96 130 882 405 Tel: 02 9439 1777 Fax: 02 9460 8413 www.atl.net.au info@atl.net.au	Drawing No.	Project No.	Issue
	SKC007	15-309	P6