

THIS DRAWING IS FOR COUNCIL APPROVAL PURPOSES ONLY. IT IS NOT FOR TO BE USED FOR CONSTRUCTION.

THIS DRAWING IS COPYRIGHT AND CANNOT BE REPRODUCED IN WHOLE OR IN PART OR BY ANY MEDIUM WITHOUT THE WRITTEN PERMISSION OF BILLBERGA DESIGN PTY LTD.

DRAWINGS PREPARED BY  
**BILLBERGIA design PTY LTD**  
**BILLBERGIA GROUP**  
SUITE 101, 25 ANGAS ST, MEADOWBANK NSW 2114  
TEL: 8878 6900 FAX: 8878 6995  
NOMINATED ARCHITECT: BEN MITCHELL (REG. NO 6339)

CONCEPT DESIGN ARCHITECTS  
TURNER + ASSOCIATES AND FENDER KATZALIDES  
IN ASSOCIATION  
DA, DESIGN DEVELOPMENT ARCHITECTS  
TURNER + ASSOCIATES  
CURRENT DRAWINGS HAVE BEEN PREPARED  
BY BILBERGIA DESIGN PTY LTD

NO.	DESCRIPTION	DATE	DRAWING PREPARED BY
5	SECTION 75W SUBMISSION 2	06.09.10	BILBERGIA DESIGN PTY LTD
4	SECTION 75W SUBMISSION 1	09.03.09	TURNER & ASSOCIATES
3	PRELIMINARY 575W 1 ISSUE	09.01.09	TURNER & ASSOCIATES
2	ISSUED FOR DRP	13.11.08	TURNER & ASSOCIATES
1	ISSUED FOR INFORMATION	11.11.08	TURNER & ASSOCIATES

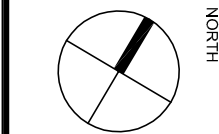
BILBERGIA DESIGN PTY LTD - DRAWING APPROVED BY

**BM**

APPLICANT  
**SITE 3**  
**DEVELOPMENT COMPANY PTY LTD**  
MEADOWBANK NSW 2114

PROJECT  
SOP 3.1

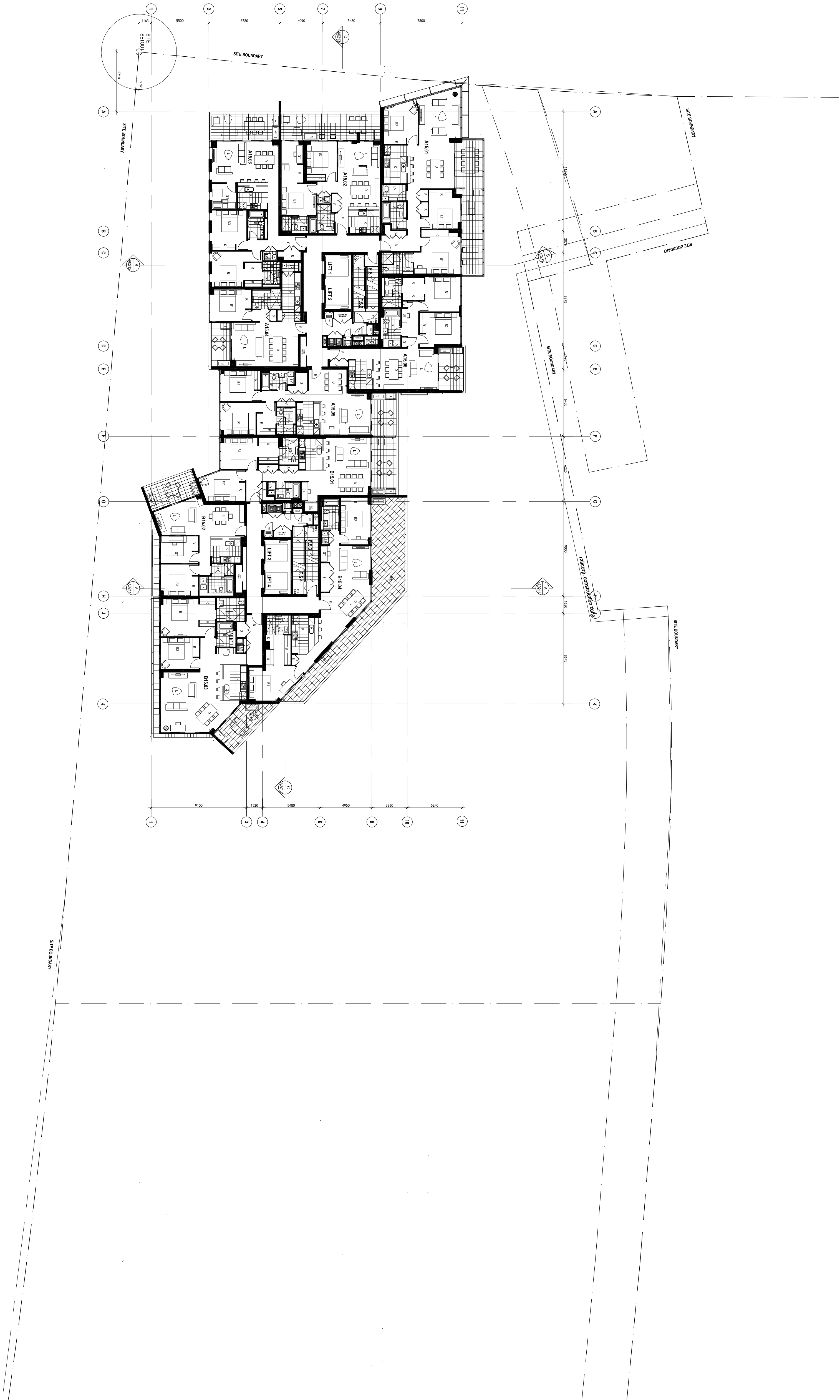
**PROPOSED DEVELOPMENT**  
SYDNEY OLYMPIC PARK  
STAGE 3 : SITE 1

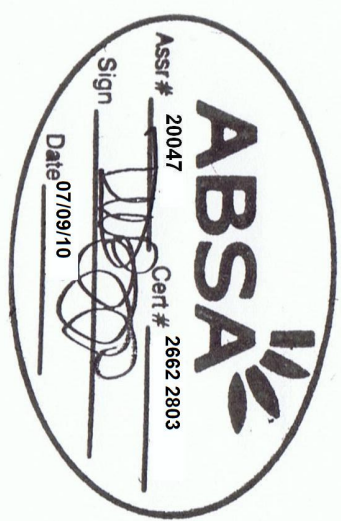


SCALE  
1:200 @ A1  
SCALE BAR  
0 2 4 6 8 10 12m

DRAWING TITLE  
**FLOOR PLAN**  
LEVEL 15  
PRINT DATE  
PROJECT ID  
DRAWING NO.  
SOP3.1 DA21 5

**DRAWING ISSUED BECAUSE REQUIRED FOR NEW BASIX CERTIFICATE**





THIS DRAWING IS FOR COUNCIL APPROVAL PURPOSES ONLY. IT IS NOT FOR TO BE USED FOR CONSTRUCTION.

THIS DRAWING IS COPYRIGHT AND CANNOT BE REPRODUCED IN WHOLE OR IN PART OR BY ANY MEDIA WITHOUT THE WRITTEN PERMISSION OF BILLBERGIA DESIGN PTY LTD.

DRAWINGS PREPARED BY  
**BILLBERGIA design PTY LTD**  
**BILLBERGIA GROUP**  
SUITE 101, 25 ANGAS ST., MEADOWBANK NSW 2114  
TEL: 8878 6900 FAX: 8878 6995  
NOMINATED ARCHITECT: BEN MITCHELL (REG. NO 6339)

CONCEPT DESIGN ARCHITECTS  
TURNER + ASSOCIATES AND FENDER KATSLIDES  
IN ASSOCIATION  
DA DESIGN DEVELOPMENT ARCHITECTS  
TURNER + ASSOCIATES  
CURRENT DRAWINGS HAVE BEEN PREPARED BY  
BILBERGIA DESIGN PTY LTD

NO.	DESCRIPTION	DATE	DRAWING PREPARED BY
1	SECTION 75W SUBMISSION 2	06.09.10	BLDERBERG DESIGN PTY LTD
2	SECTION 75W SUBMISSION 1	04.03.09	TURNER AND ASSOCIATES
3	PRELIMINARY 575W 1 ISSUE	09.01.09	TURNER AND ASSOCIATES
4	ISSUED FOR GRP	13.11.08	TURNER AND ASSOCIATES
5	ISSUED FOR INFORMATION	11.11.08	TURNER AND ASSOCIATES

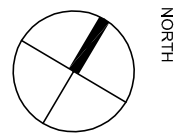
BLDERBERG DESIGN PTY LTD - DRAWING APPROVED BY

**BM**

APPLICANT  
**SITE 3**  
**DEVELOPMENT COMPANY PTY LTD**  
MEADOWBANK NSW 2114

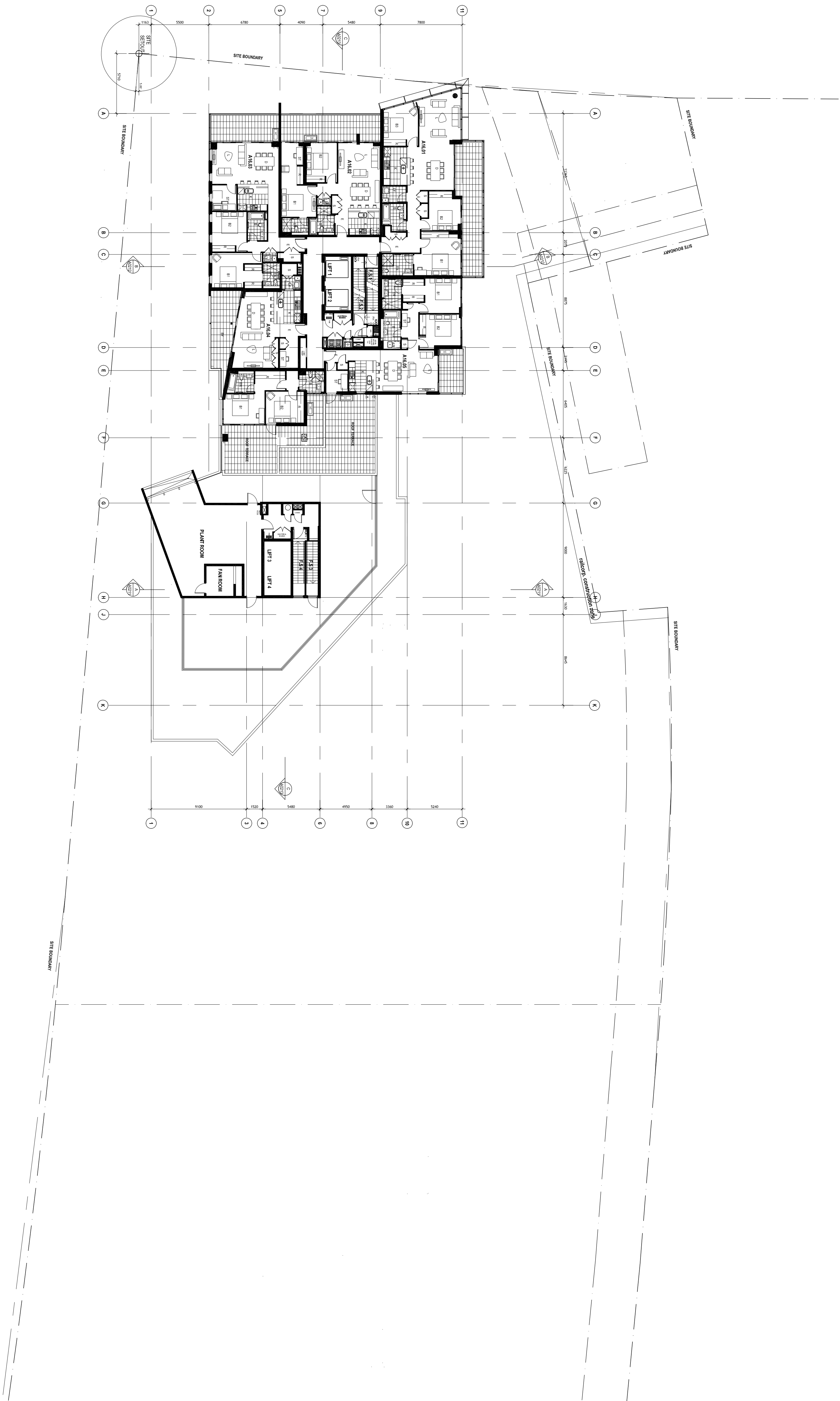
PROJECT  
SOP 3.1

PROPOSED DEVELOPMENT  
SYDNEY OLYMPIC PARK  
STAGE 3 : SITE 1



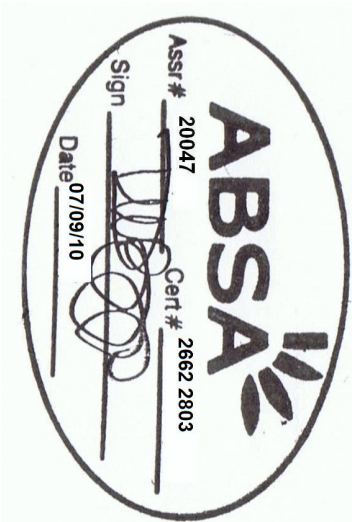
SCALE  
1:200 @ A1  
SCALE BAR  
0 2 4 6 8 10 12m

DRAWING TITLE  
**FLOOR PLAN**  
LEVEL 16  
PRINT DATE  
PROJECT ID  
DRAWING NO.  
SOP3.1 DA22 5  
ISSUE



**DRAWING ISSUED BECAUSE REQUIRED FOR NEW BASIX CERTIFICATE**





THIS DRAWING IS FOR COUNCIL APPROVAL PURPOSES ONLY. IT IS NOT FOR TO BE USED FOR CONSTRUCTION.

THIS DRAWING IS COPYRIGHT AND CANNOT BE REPRODUCED IN WHOLE OR IN PART OR BY ANY MEDIA WITHOUT THE WRITTEN PERMISSION OF BILLBERGIA DESIGN PTY LTD.

DRAWINGS PREPARED BY  
**BILLBERGIA design PTY LTD**  
**BILLBERGIA GROUP**  
SUITE 101, 25 ANGAS ST., MEADOWBANK NSW 2114  
TEL: 8878 6900 FAX: 8878 6995  
NOMINATED ARCHITECT: BEN MITCHELL (REG. NO 6339)

CONCEPT DESIGN ARCHITECTS  
TURNER + ASSOCIATES AND FENDER KATSLIDES  
IN ASSOCIATION  
DA DESIGN DEVELOPMENT ARCHITECTS  
TURNER + ASSOCIATES  
CURRENT DRAWINGS HAVE BEEN PREPARED BY  
BILBERGIA DESIGN PTY LTD

ISSUE	DATE	DRAWING PROVIDED BY
1	06.09.10	BILBERGIA DESIGN PTY LTD
2	06.09.10	BILBERGIA DESIGN PTY LTD
3	04.03.09	TURNER AND ASSOCIATES
4	09.01.09	TURNER AND ASSOCIATES
5	09.01.09	TURNER AND ASSOCIATES
6	13.11.08	TURNER AND ASSOCIATES
7	13.11.08	TURNER AND ASSOCIATES
8	11.11.08	TURNER AND ASSOCIATES

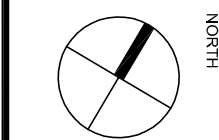
BILBERGIA DESIGN PTY LTD - DRAWING APPROVED BY

**BM**

APPLICANT  
**SITE 3**  
**DEVELOPMENT COMPANY PTY LTD**  
MEADOWBANK NSW 2114

PROJECT  
SOP 3.1

PROPOSED DEVELOPMENT  
SYDNEY OLYMPIC PARK  
STAGE 3 : SITE 1



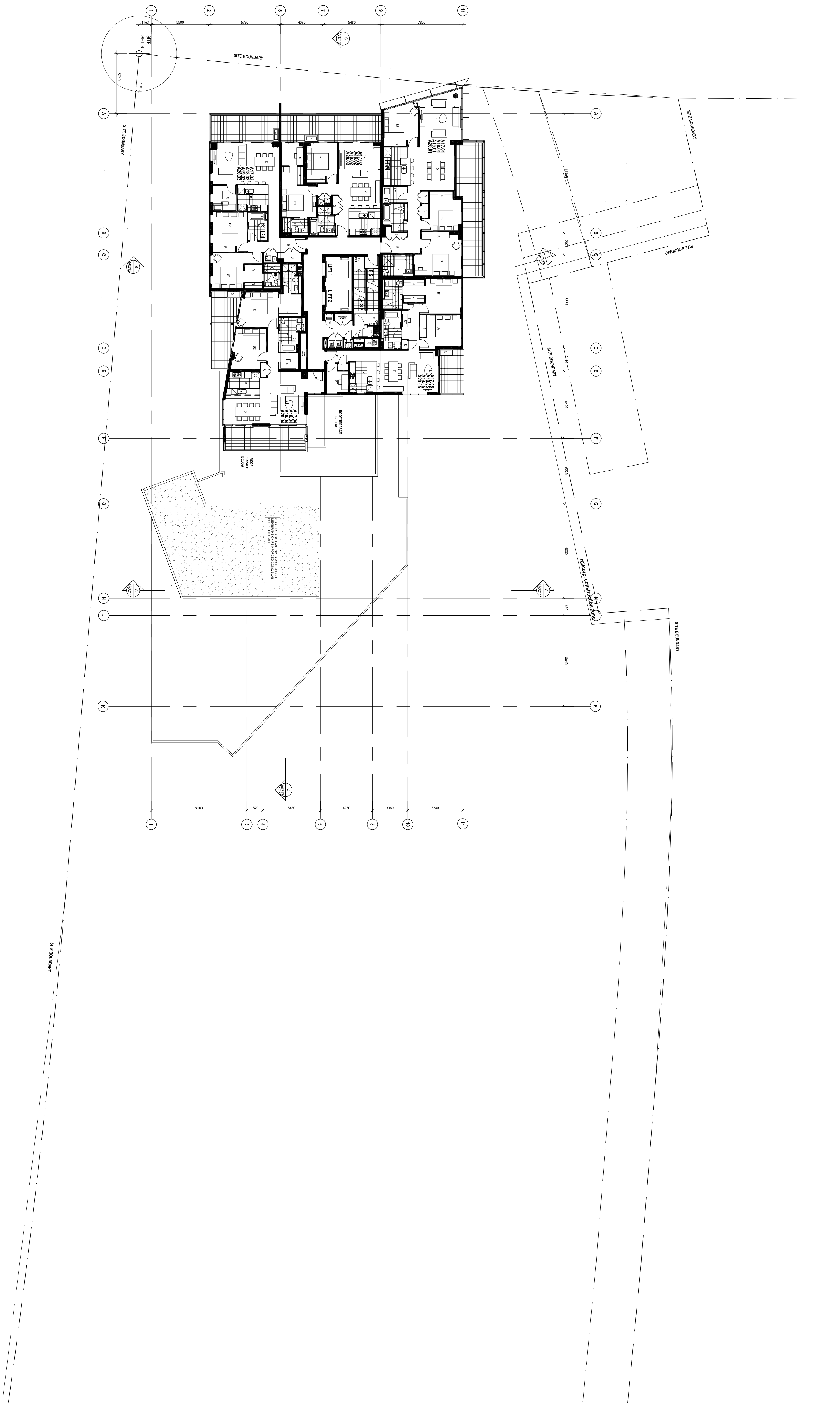
SCALE  
1:200 @ A1  
SCALE BAR  
0 2 4 6 8 10 12m

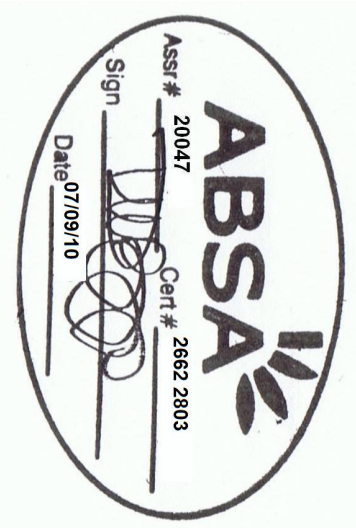
DRAWING TITLE  
**FLOOR PLAN**  
LEVELS 17 TO 20

PRINT DATE PROJECT ID DRAWING NO. ISSUE

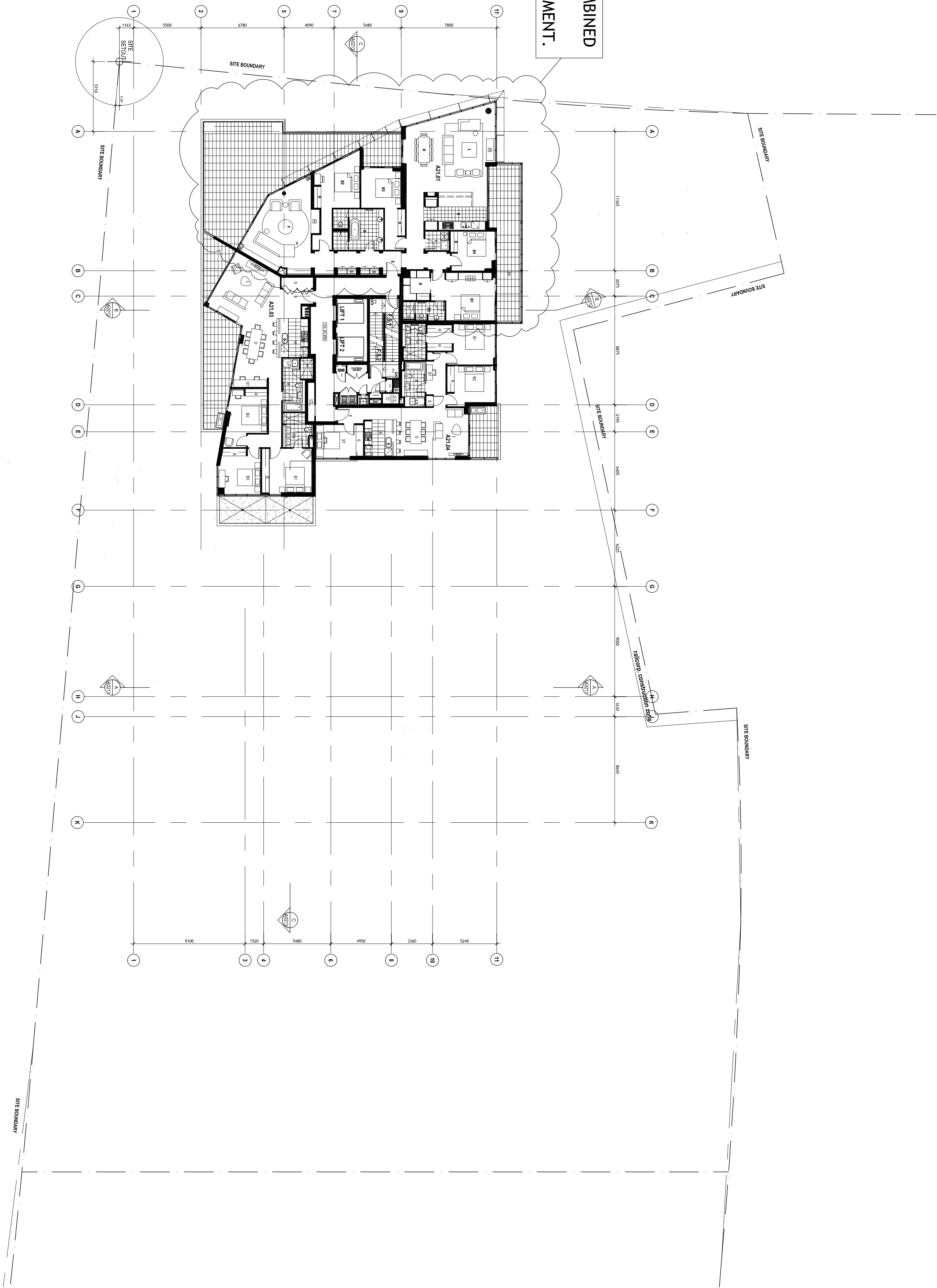
SOP3.1 DA23 5

DRAWING ISSUED BECAUSE REQUIRED FOR NEW BASIX CERTIFICATE





APARTMENTS A21.01 AND A21.02 COMBINED INTO A SINGLE APARTMENT.  
ONE LESS BEDROOM, ONE LESS APARTMENT.



THIS DRAWING IS FOR COUNCIL APPROVAL  
PURPOSES ONLY.  
IT IS NOT FOR TO BE USED FOR  
CONSTRUCTION.

THIS DRAWING IS COPYRIGHT AND CANNOT BE  
REPRODUCED IN WHOLE OR IN PART OR BY  
ANY MEDIUM WITHOUT THE WRITTEN  
PERMISSION OF BILLBERGIA DESIGN PTY LTD.

DRAWINGS PREPARED BY  
**BILLBERGIA design PTY LTD**

**BILLBERGIA GROUP**

SUITE 101, 25 ANGAS ST, MELBOWNS PARK NSW 2114  
TEL: 8878 6000  
NOTED ARCHITECT: BEN MICHELL (REG. NO 6339)  
FAX: 8878 6995

CONCEPT DESIGN ARCHITECTS  
TURNER + ASSOCIATES AND FENDER KATSLIDES  
IN ASSOCIATION  
PA DESIGN DEVELOPMENT ARCHITECTS  
TURNER + ASSOCIATES  
CURRENT DRAWINGS HAVE BEEN PREPARED BY  
**BILBERGIA DESIGN PTY LTD**

DATE	ISSUED FOR	DATE	ISSUED FOR
06.09.10	SECTION 735W SUBMISSION 1	06.09.10	SECTION 735W SUBMISSION 1
09.01.09	SECTION 735W SUBMISSION 2	09.01.09	SECTION 735W SUBMISSION 2
11.11.08	ISSUED FOR INFORMATION	11.11.08	ISSUED FOR INFORMATION

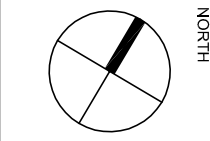
BLISSARD DESIGN PTY LTD - DRAWING APPROVED BY

**BM**

APPLICANT  
**SITE 3**  
**DEVELOPMENT COMPANY PTY LTD**  
MEADOWBANK NSW 2114

# PROJECT SOP 3.1

PROPOSED DEVELOPMENT  
SYDNEY OLYMPIC PARK  
STAGE 3 : SITE 1



SCALE  
1 : 200 @ A1 1:400 @ A3  
SCALE BAR  
0 2 4 6 8 10 12m

DRAWING TITLE  
**LEVEL 21 PLAN**

PRINT DATE PROJECT ID DRAWING NO. ISSUED BY  
 08.07.10 SOP3.1 DA27 4



THIS DRAWING IS FOR COUNCIL APPROVAL.  
IT IS NOT TO BE USED FOR CONSTRUCTION.  
THIS DRAWING IS COPYRIGHT AND CANNOT BE REPRODUCED IN WHOLE OR IN PART OR BY ANY MEANS WITHOUT THE WRITTEN PERMISSION OF BILBERGIA DESIGN PTY LTD.

DRAWINGS PREPARED BY

**BILBERGIA design PTY LTD**

**BILBERGIA GROUP**

SUITE 101, 25 ANGAS ST, MEADOWBANK NSW 2114  
DRAWING NO: DA28  
DRAWN BY: BEN MICHELL (REG. NO 6339)

DESIGNER/ENGINEER/ARCHITECT

THE ASSOCIATION OF ARCHITECTS AND ENGINEERS IN ASSOCIATION  
104 RUSSELL STREET, SYDNEY NSW 2000  
TEL: (02) 9231 1111  
WWW.AAAS.AU

CONCEPT DESIGN/ARCHITECT

**BILBERGIA design PTY LTD**

DESIGNER/ENGINEER/ARCHITECT

THE ASSOCIATION OF ARCHITECTS AND ENGINEERS IN ASSOCIATION  
104 RUSSELL STREET, SYDNEY NSW 2000  
TEL: (02) 9231 1111  
WWW.AAAS.AU

CONCEPT DESIGN/ARCHITECT

**BILBERGIA design PTY LTD**

NO.	DESCRIPTION	DATE	DRAWING APPROVED BY
1	SECTION 1/10 SUBMISSION 1	06.09.10	BILBERGIA DESIGN PTY LTD
2	SECTION 2/10 SUBMISSION 2	06.09.10	BILBERGIA DESIGN PTY LTD
3	SECTION 3/10 SUBMISSION 3	06.09.10	BILBERGIA DESIGN PTY LTD
4	SECTION 4/10 SUBMISSION 4	06.09.10	BILBERGIA DESIGN PTY LTD
5	SECTION 5/10 SUBMISSION 5	06.09.10	BILBERGIA DESIGN PTY LTD
6	SECTION 6/10 SUBMISSION 6	06.09.10	BILBERGIA DESIGN PTY LTD
7	SECTION 7/10 SUBMISSION 7	06.09.10	BILBERGIA DESIGN PTY LTD
8	SECTION 8/10 SUBMISSION 8	06.09.10	BILBERGIA DESIGN PTY LTD
9	SECTION 9/10 SUBMISSION 9	06.09.10	BILBERGIA DESIGN PTY LTD
10	SECTION 10/10 SUBMISSION 10	06.09.10	BILBERGIA DESIGN PTY LTD
11	SECTION 11/10 SUBMISSION 11	06.09.10	BILBERGIA DESIGN PTY LTD
12	SECTION 12/10 SUBMISSION 12	06.09.10	BILBERGIA DESIGN PTY LTD
13	SECTION 13/10 SUBMISSION 13	06.09.10	BILBERGIA DESIGN PTY LTD
14	SECTION 14/10 SUBMISSION 14	06.09.10	BILBERGIA DESIGN PTY LTD
15	SECTION 15/10 SUBMISSION 15	06.09.10	BILBERGIA DESIGN PTY LTD
16	SECTION 16/10 SUBMISSION 16	06.09.10	BILBERGIA DESIGN PTY LTD
17	SECTION 17/10 SUBMISSION 17	06.09.10	BILBERGIA DESIGN PTY LTD
18	SECTION 18/10 SUBMISSION 18	06.09.10	BILBERGIA DESIGN PTY LTD
19	SECTION 19/10 SUBMISSION 19	06.09.10	BILBERGIA DESIGN PTY LTD
20	SECTION 20/10 SUBMISSION 20	06.09.10	BILBERGIA DESIGN PTY LTD
21	SECTION 21/10 SUBMISSION 21	06.09.10	BILBERGIA DESIGN PTY LTD
22	SECTION 22/10 SUBMISSION 22	06.09.10	BILBERGIA DESIGN PTY LTD
23	SECTION 23/10 SUBMISSION 23	06.09.10	BILBERGIA DESIGN PTY LTD
24	SECTION 24/10 SUBMISSION 24	06.09.10	BILBERGIA DESIGN PTY LTD
25	SECTION 25/10 SUBMISSION 25	06.09.10	BILBERGIA DESIGN PTY LTD
26	SECTION 26/10 SUBMISSION 26	06.09.10	BILBERGIA DESIGN PTY LTD
27	SECTION 27/10 SUBMISSION 27	06.09.10	BILBERGIA DESIGN PTY LTD
28	SECTION 28/10 SUBMISSION 28	06.09.10	BILBERGIA DESIGN PTY LTD
29	SECTION 29/10 SUBMISSION 29	06.09.10	BILBERGIA DESIGN PTY LTD
30	SECTION 30/10 SUBMISSION 30	06.09.10	BILBERGIA DESIGN PTY LTD
31	SECTION 31/10 SUBMISSION 31	06.09.10	BILBERGIA DESIGN PTY LTD
32	SECTION 32/10 SUBMISSION 32	06.09.10	BILBERGIA DESIGN PTY LTD
33	SECTION 33/10 SUBMISSION 33	06.09.10	BILBERGIA DESIGN PTY LTD
34	SECTION 34/10 SUBMISSION 34	06.09.10	BILBERGIA DESIGN PTY LTD
35	SECTION 35/10 SUBMISSION 35	06.09.10	BILBERGIA DESIGN PTY LTD
36	SECTION 36/10 SUBMISSION 36	06.09.10	BILBERGIA DESIGN PTY LTD
37	SECTION 37/10 SUBMISSION 37	06.09.10	BILBERGIA DESIGN PTY LTD
38	SECTION 38/10 SUBMISSION 38	06.09.10	BILBERGIA DESIGN PTY LTD
39	SECTION 39/10 SUBMISSION 39	06.09.10	BILBERGIA DESIGN PTY LTD
40	SECTION 40/10 SUBMISSION 40	06.09.10	BILBERGIA DESIGN PTY LTD
41	SECTION 41/10 SUBMISSION 41	06.09.10	BILBERGIA DESIGN PTY LTD
42	SECTION 42/10 SUBMISSION 42	06.09.10	BILBERGIA DESIGN PTY LTD
43	SECTION 43/10 SUBMISSION 43	06.09.10	BILBERGIA DESIGN PTY LTD
44	SECTION 44/10 SUBMISSION 44	06.09.10	BILBERGIA DESIGN PTY LTD
45	SECTION 45/10 SUBMISSION 45	06.09.10	BILBERGIA DESIGN PTY LTD
46	SECTION 46/10 SUBMISSION 46	06.09.10	BILBERGIA DESIGN PTY LTD
47	SECTION 47/10 SUBMISSION 47	06.09.10	BILBERGIA DESIGN PTY LTD
48	SECTION 48/10 SUBMISSION 48	06.09.10	BILBERGIA DESIGN PTY LTD
49	SECTION 49/10 SUBMISSION 49	06.09.10	BILBERGIA DESIGN PTY LTD
50	SECTION 50/10 SUBMISSION 50	06.09.10	BILBERGIA DESIGN PTY LTD
51	SECTION 51/10 SUBMISSION 51	06.09.10	BILBERGIA DESIGN PTY LTD
52	SECTION 52/10 SUBMISSION 52	06.09.10	BILBERGIA DESIGN PTY LTD
53	SECTION 53/10 SUBMISSION 53	06.09.10	BILBERGIA DESIGN PTY LTD
54	SECTION 54/10 SUBMISSION 54	06.09.10	BILBERGIA DESIGN PTY LTD
55	SECTION 55/10 SUBMISSION 55	06.09.10	BILBERGIA DESIGN PTY LTD
56	SECTION 56/10 SUBMISSION 56	06.09.10	BILBERGIA DESIGN PTY LTD
57	SECTION 57/10 SUBMISSION 57	06.09.10	BILBERGIA DESIGN PTY LTD
58	SECTION 58/10 SUBMISSION 58	06.09.10	BILBERGIA DESIGN PTY LTD
59	SECTION 59/10 SUBMISSION 59	06.09.10	BILBERGIA DESIGN PTY LTD
60	SECTION 60/10 SUBMISSION 60	06.09.10	BILBERGIA DESIGN PTY LTD
61	SECTION 61/10 SUBMISSION 61	06.09.10	BILBERGIA DESIGN PTY LTD
62	SECTION 62/10 SUBMISSION 62	06.09.10	BILBERGIA DESIGN PTY LTD
63	SECTION 63/10 SUBMISSION 63	06.09.10	BILBERGIA DESIGN PTY LTD
64	SECTION 64/10 SUBMISSION 64	06.09.10	BILBERGIA DESIGN PTY LTD
65	SECTION 65/10 SUBMISSION 65	06.09.10	BILBERGIA DESIGN PTY LTD
66	SECTION 66/10 SUBMISSION 66	06.09.10	BILBERGIA DESIGN PTY LTD
67	SECTION 67/10 SUBMISSION 67	06.09.10	BILBERGIA DESIGN PTY LTD
68	SECTION 68/10 SUBMISSION 68	06.09.10	BILBERGIA DESIGN PTY LTD
69	SECTION 69/10 SUBMISSION 69	06.09.10	BILBERGIA DESIGN PTY LTD
70	SECTION 70/10 SUBMISSION 70	06.09.10	BILBERGIA DESIGN PTY LTD
71	SECTION 71/10 SUBMISSION 71	06.09.10	BILBERGIA DESIGN PTY LTD
72	SECTION 72/10 SUBMISSION 72	06.09.10	BILBERGIA DESIGN PTY LTD
73	SECTION 73/10 SUBMISSION 73	06.09.10	BILBERGIA DESIGN PTY LTD
74	SECTION 74/10 SUBMISSION 74	06.09.10	BILBERGIA DESIGN PTY LTD
75	SECTION 75/10 SUBMISSION 75	06.09.10	BILBERGIA DESIGN PTY LTD
76	SECTION 76/10 SUBMISSION 76	06.09.10	BILBERGIA DESIGN PTY LTD
77	SECTION 77/10 SUBMISSION 77	06.09.10	BILBERGIA DESIGN PTY LTD
78	SECTION 78/10 SUBMISSION 78	06.09.10	BILBERGIA DESIGN PTY LTD
79	SECTION 79/10 SUBMISSION 79	06.09.10	BILBERGIA DESIGN PTY LTD
80	SECTION 80/10 SUBMISSION 80	06.09.10	BILBERGIA DESIGN PTY LTD
81	SECTION 81/10 SUBMISSION 81	06.09.10	BILBERGIA DESIGN PTY LTD
82	SECTION 82/10 SUBMISSION 82	06.09.10	BILBERGIA DESIGN PTY LTD
83	SECTION 83/10 SUBMISSION 83	06.09.10	BILBERGIA DESIGN PTY LTD
84	SECTION 84/10 SUBMISSION 84	06.09.10	BILBERGIA DESIGN PTY LTD
85	SECTION 85/10 SUBMISSION 85	06.09.10	BILBERGIA DESIGN PTY LTD
86	SECTION 86/10 SUBMISSION 86	06.09.10	BILBERGIA DESIGN PTY LTD
87	SECTION 87/10 SUBMISSION 87	06.09.10	BILBERGIA DESIGN PTY LTD
88	SECTION 88/10 SUBMISSION 88	06.09.10	BILBERGIA DESIGN PTY LTD
89	SECTION 89/10 SUBMISSION 89	06.09.10	BILBERGIA DESIGN PTY LTD
90	SECTION 90/10 SUBMISSION 90	06.09.10	BILBERGIA DESIGN PTY LTD
91	SECTION 91/10 SUBMISSION 91	06.09.10	BILBERGIA DESIGN PTY LTD
92	SECTION 92/10 SUBMISSION 92	06.09.10	BILBERGIA DESIGN PTY LTD
93	SECTION 93/10 SUBMISSION 93	06.09.10	BILBERGIA DESIGN PTY LTD
94	SECTION 94/10 SUBMISSION 94	06.09.10	BILBERGIA DESIGN PTY LTD
95	SECTION 95/10 SUBMISSION 95	06.09.10	BILBERGIA DESIGN PTY LTD
96	SECTION 96/10 SUBMISSION 96	06.09.10	BILBERGIA DESIGN PTY LTD
97	SECTION 97/10 SUBMISSION 97	06.09.10	BILBERGIA DESIGN PTY LTD
98	SECTION 98/10 SUBMISSION 98	06.09.10	BILBERGIA DESIGN PTY LTD
99	SECTION 99/10 SUBMISSION 99	06.09.10	BILBERGIA DESIGN PTY LTD
100	SECTION 100/10 SUBMISSION 100	06.09.10	BILBERGIA DESIGN PTY LTD

APPLICANT

**SITE 3**  
**DEVELOPMENT COMPANY PTY LTD**  
MEADOWBANK NSW 2114

PROJECT

**SOPA 3.1**

PROJECT

**SOPA 3.1**

PROPOSED DEVELOPMENT

SYDNEY OLYMPIC PARK  
STAGE 3 : SITE 1

NORTH

SCALE

**1 : 200 @ A1 1:400 @ A3**

DRAWING TITLE

**LEVEL 22 & 23 PLAN**

PRINT DATE

05.11.09

PROJECT ID

SOP3.1

DRAWING NO.

DA28

ISSUE

4

DRAWING ISSUED BECAUSE REQUIRED FOR NEW BASIX CERTIFICATE