

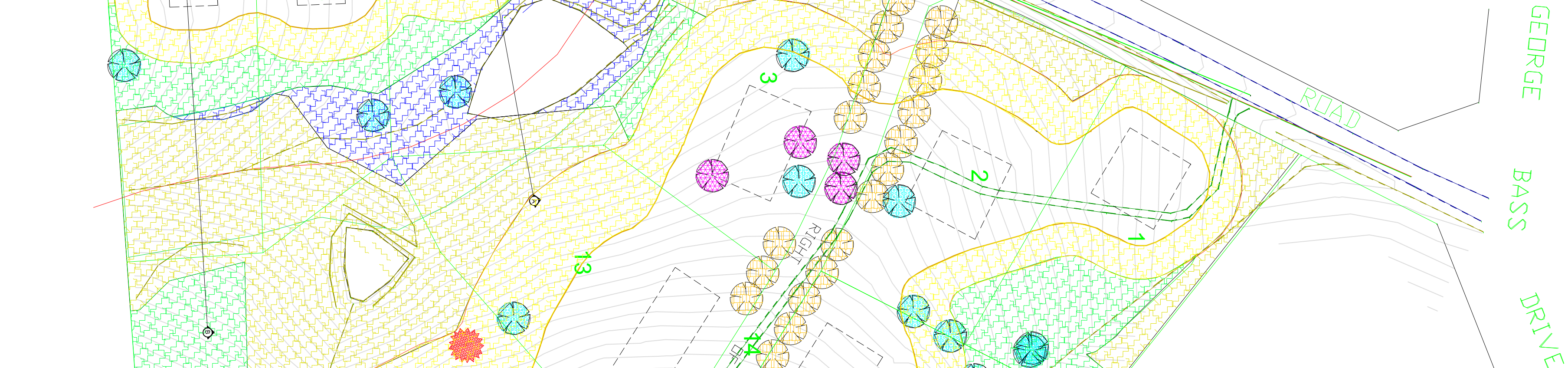
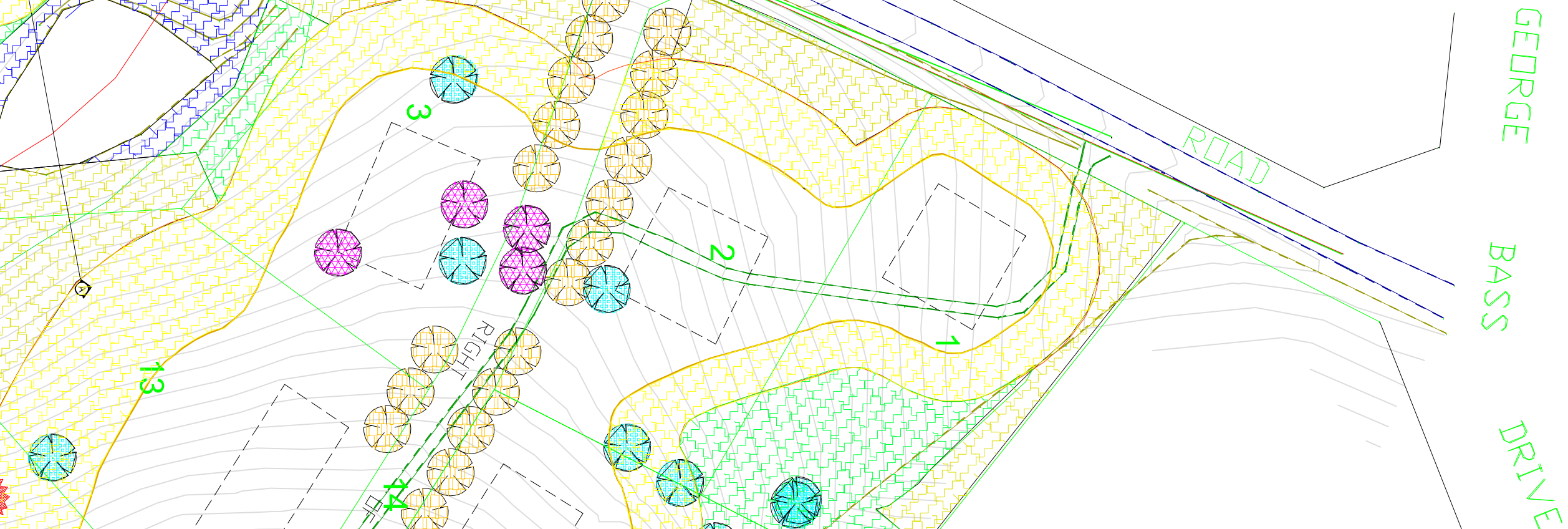
GEORGE
BASS
DRIVE

GEORGE
BASS
DRIVE

Year	George (%)	Bass (%)	Drine (%)
1980	15	10	5
1985	18	12	7
1990	20	14	10
1995	22	16	12
2000	25	20	15

[illegible]

An aerial map of the study area. The map shows a road labeled 'ROAD' and a street labeled 'GEORGE BASS DRIVE'. The map is divided into several parcels, some of which are shaded with different patterns (yellow, green, blue, and white). A dashed line indicates a boundary or a specific area of interest. A small blue circle with a crosshair is located in the bottom left corner of the map.

[illegible]

MAINTENANCE

MAINTENANCE

MAINTENANCE

MAINTENANCE

MAINTENANCE

WATERING: Water all plants adequately to keep them healthy and growing vigorously. The minimum acceptable watering requirement is to spend 30 minutes of rainfall (infill) of its equivalent, or its equivalent in both, during each period of care week for infill establishment period and then as required to maintain vigorous and healthy growth.

FERTILIZING: Apply a slow release fertilizer for lawns, to all plants once during the growing season at the rate specified by manufacturer.

WEEDING: Remove all weeds by hand as they appear. In planting areas and around individual plants in grass areas, take care not to damage the plants.

MAINTENANCE

MAINTENANCE

WATERING: Water all plants adequately to keep them healthy and growing vigorously. The minimum acceptable watering requirement is to equal 50mm of natural rainfall or its applied equivalent, or a combination of both, during each period of one week (or rainfall establishment period and then as required to maintain vigorous and healthy growth.

FEEDING/TUNING: Apply a slow release fertilizer for melons, to all plants once during the growing season at the rate specified by manufacturer.

WEEDS: Remove all weeds by hand as they appear. In planting areas and around individual plants in grass areas, take care to not contaminate mulch layer with soil.

MULCH: Maintain 75mm depth mulch layer in planting areas and around individual trees and shrubs in grass areas. Replace mulch as necessary with the same material as before specified to maintain the minimum depth over the soil surface.

MAINTENANCE

WATERING: Water all plants in the garden to equal 50mm of natural rainfall every 7-10 days during the establishment period and once a week thereafter.

FERTILIZING: Apply a slow release fertilizer to the plants at the time of planting.

WEEDS: Remove all weeds from the garden and mulch layer.

MULCH: Maintain 75mm of mulch in the garden, necessary with the same frequency as watering.

MAINTENANCE PERIOD: The maintenance period, maintenance to be performed on the garden, is 12 months.

MAINTENANCE

WATERING: Water all plants adequately to keep them healthy and growing vigorously. The minimum acceptable watering requirement is to equal 50mm of natural rainfall or its applied equivalent, or a combination of both, during each period of one week for initial establishment period and then as required to maintain vigorous and healthy growth.

FERTILIZING: Apply a slow release fertilizer for natives, to all plants once during the growing season at the rate specified by manufacturer.

WEEDING: Remove all weeds by hand as they appear. In planting areas and around individual plants in grass areas, take care not to overwater mulch layer with soil.

MULCH: Maintain 75mm depth mulch layer in planting areas around individual trees and shrubs in grass areas. Replace mulch as necessary with the same material as before specified to maintain this minimum depth over the set surface.

MAINTENANCE PERIOD: Maintenance period to continue for 15 weeks from installation or until established. Beyond formal maintenance period, maintenance to be carried out as required to maintain general plant health and appear in the fully CMA equivalent.

MAINTENANCE

WARNINGS: Water all plants adequately to keep them healthy and growing vigorously. The minimum acceptable watering requirement is to equal 50mm of natural rainfall or its applied equivalent, or a combination of both, during each period of one week for initial establishment period and then as required to maintain vigorous and healthy growth.

FERTILIZING: Apply a slow release fertilizer for natives, to all plants once during the growing season at the rate specified by manufacturer.

WEEDS: Remove all weeds by hand as they appear. In planting areas and around individual plants in grass areas, take care not to compact the mulch layer with soil.

MULCH: Maintain 75mm depth mulch layer in planting areas and around individual trees and shrubs in grass areas. Replace mulch as necessary with the same material as before specified to maintain this minimum depth over the soil surface.

MAINTENANCE RESCD: Maintenance period to continue for 12 weeks from installation or until established. Required form maintenance period, maintenance to be carried out as required to maintain ground plant health and vigor in line with CMV requirements.

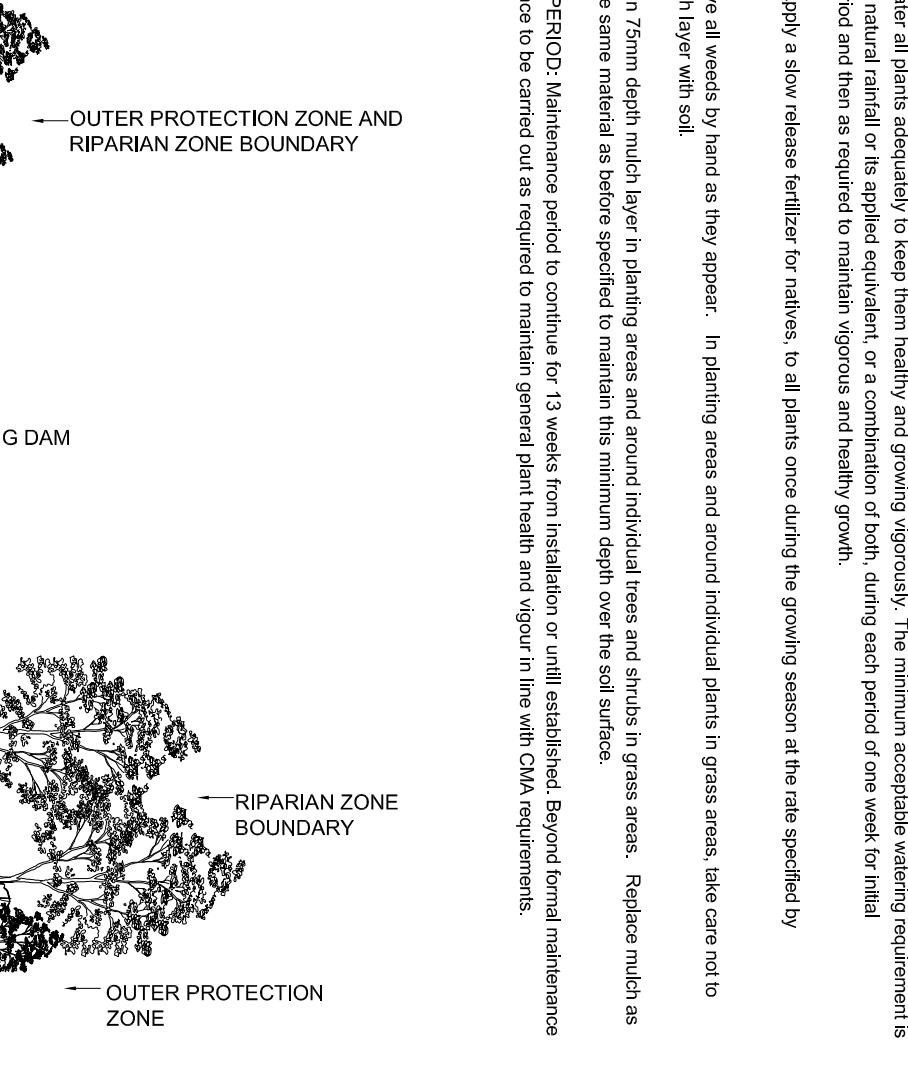
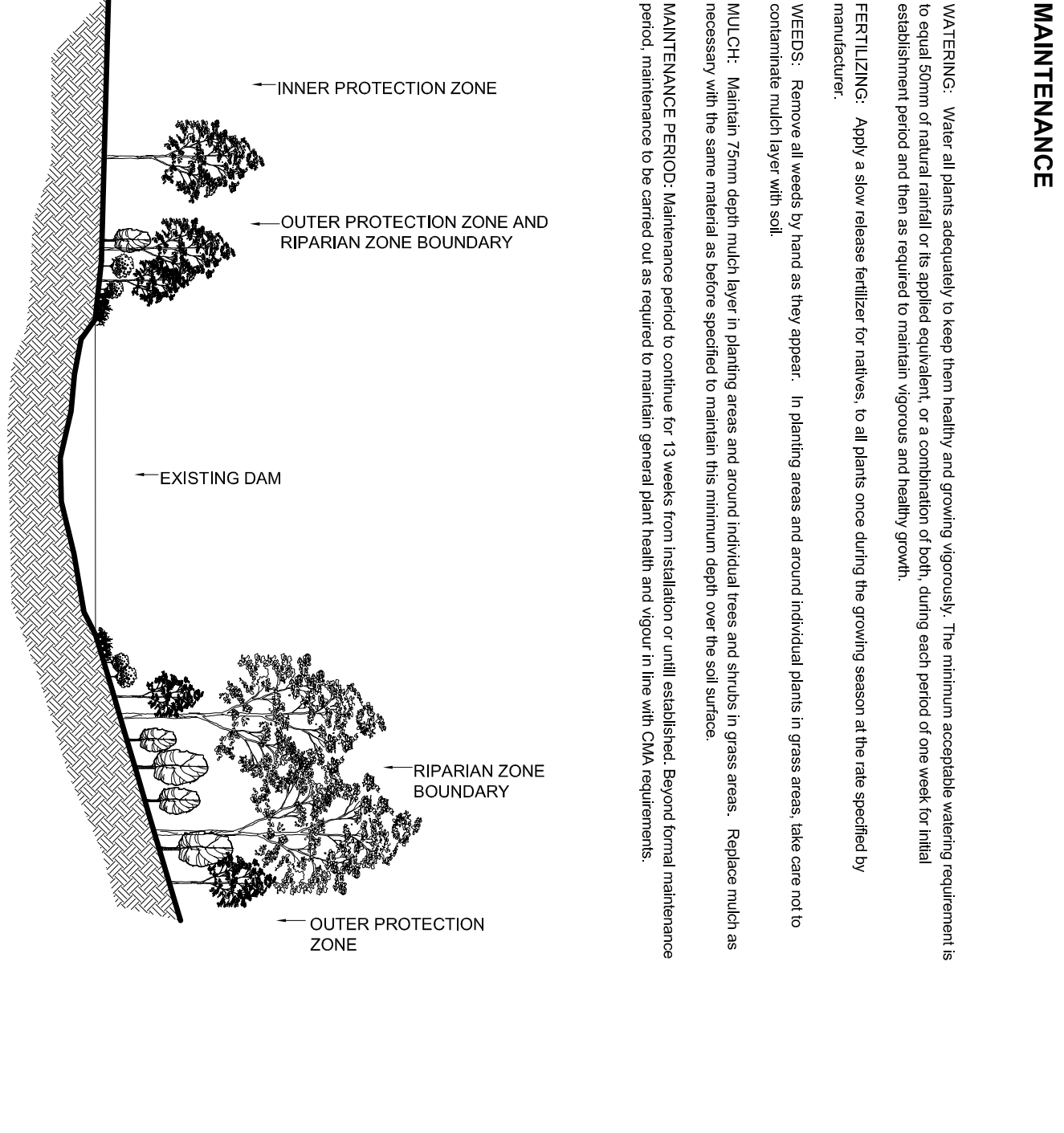


Diagram illustrating the maintenance requirements for a riparian zone. The diagram shows a cross-section of the ground with various layers and boundaries. Labels include:

- INNER PROTECTION ZONE
- OUTER PROTECTION ZONE AND RIPARIAN ZONE BOUNDARY
- EXISTING DAM
- RIPARIAN ZONE BOUNDARY
- OUTER PROTECTION ZONE



MAINTENANCE

WARNINGS: Water all plants adequately to keep them healthy and growing vigorously. The minimum acceptable watering requirement is equal to the amount of rainfall or the applied equivalent, or a combination of both, during each period of one week for initial establishment period and then as required to maintain vigorous and healthy growth.

FEEDING: Apply a slow release fertilizer for natives, to all plants once during the growing season at the rate specified by manufacturer.

MULCHING: Remove all weeds by hand as they appear. In planting areas and around individual plants in grass areas, take care not to compactly mulch layer with soil.

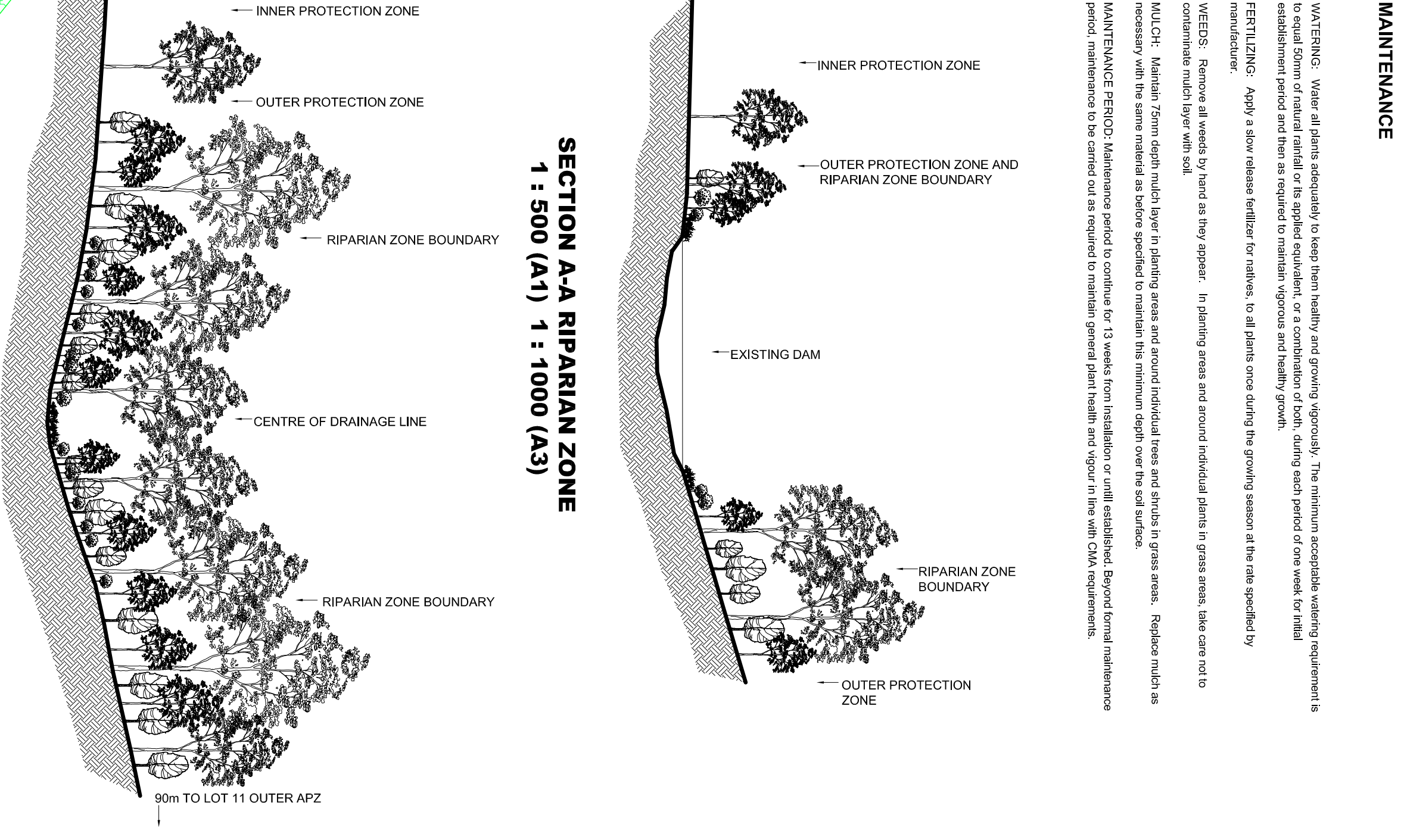
MULCH: Maintain 75mm depth mulch layer in planting areas and around individual trees and shrubs in grass areas. Replace mulch as necessary with the same material as before specified to maintain the minimum depth over the full surface.

MAINTENANCE PERIOD: Maintenance period to continue for 13 weeks from installation or until established. Beyond formal maintenance period, maintenance to be carried out as required to maintain general plant health and vigor in line with CMA requirements.

The diagram illustrates a cross-section of a riparian zone. On the left, a hatched area represents the 'INNER PROTECTION ZONE'. To its right is the 'OUTER PROTECTION ZONE AND RIPARIAN ZONE BOUNDARY', which contains several trees. Further right is the 'EXISTING DAM', indicated by a horizontal line with a small crossbar. To the right of the dam is the 'RIPARIAN ZONE BOUNDARY', which contains a dense cluster of trees. The area to the right of this boundary is the 'OUTER PROTECTION ZONE'.

SECTION A-A RIPARIAN ZONE

1 : 500 (A1) 1 : 1000 (A3)



MAINTENANCE

WATERING: Water all plants adequately to keep them healthy and growing vigorously. The minimum acceptable watering requirement is to equal 50mm of natural rainfall or its sapling equivalent, or a combination of both, during each period of one week for rainfall observation period and then as required to maintain vigorous and healthy growth.

FERTILIZING: Apply a slow release fertilizer for natives, to all plants once during the growing season at the rate specified by manufacturer.

WEEDS: Remove all weeds by hand as they appear. In planting areas and around individual plants in grass areas, take care not to contaminate mulch layer with soil.

MULCHING: Maintain 75mm depth mulch layer in planting areas and around individual trees and shrubs in grass areas. Replace mulch as necessary and the same material as before application to maintain the minimum depth over the full lifecycle.

MAINTENANCE PERIOD: Maintenance period to continue for 13 weeks from installation or until established. Beyond from maintenance period, maintenance to be carried out as required to maintain general plant health and vigor in line with OMA requirements.

SECTION A-A RIPARIAN ZONE
1 : 500 (A1) 1 : 1000 (A3)

SECTION B-B RIPARIAN ZONE
1 : 500 (A1) 1 : 1000 (A3)

90m TO LOT 11 OUTER APZ

DESIGN INTENT

DESIGN INTENT

The key design intentions of this landscape proposal are:

- ## DESIGN INTENT
- The key design intentions of this landscape proposal are:
- Use of native endemic species only
 - Creation of new habitat opportunities for fauna
 - Maintenance and improvement of current level of biodiversity
 - Increased opportunities for wildlife corridors through site
 - Retention of semi-rural character
 - Enhancement of visual quality of developed subdivision
 - Reduction in erosion potential

No.	Date
A	11/1/207
B	7/4/08
C	
D	
E	
F	
G	

of
the
site

GEORGE BASS DRIVE

ROAD

1307 74TH ST.

13

14

15

16

17

18

19

20

21

22

23

24

25

26

27

28

29

30

31

32

33

34

35

36

37

38

39

40

41

42

43

44

45

46

47

48

49

50

51

52

53

54

55

56

57

58

59

60

61

62

63

64

65

66

67

68

69

70

71

72

73

74

75

76

77

78

79

80

81

82

83

84

85

86

87

88

89

90

91

92

93

94

95

96

97

98

99

100

101

102

103

104

105

106

107

108

109

110

111

112

113

114

115

116

117

118

119

120

121

122

123

124

125

126

127

128

129

130

131

132

133

134

135

136

137

138

139

140

141

142

143

144

145

146

147

148

149

150

151

152

153

154

155

156

157

158

159

160

161

162

163

164

165

166

167

168

169

170

171

172

173

174

175

176

177

178

179

180

181

182

183

184

185

186

187

188

189

190

191

192

193

194

195

196

197

198

199

200

201

202

203

204

205

206

207

208

209

210

211

212

213

214

215

216

217

218

219

220

221

222

223

224

225

226

227

228

229

230

231

232

233

234

235

236

237

238

239

240

241

242

243

244

245

246

247

248

249

250

251

252

253

254

255

256

257

258

259

260

261

262

263

264

265

266

267

268

269

270

271

272

273

274

275

276

277

278

279

280

281

282

283

284

285

286

287

288

289

290

291

292

293

294

295

296

297

298

299

300

301

302

303

304

305

306

307

308

309

310

311

312

313

314

315

316

317

318

319

320

321

322

323

324

325

326

327

328

329

330

331

332

333

334

335

336

337

338

339

340

341

342

343

344

345

346

347

348

349

350

351

352

353

354

355

356

357

358

359

360

361

362

363

364

365

366

367

368

369

370

371

372

373

374

375

376

377

378

379

380

381

382

383

384

385

386

387

388

389

390

391

392

393

394

395

396

397

398

399

400

401

402

403

404

405

406

407

408

409

410

411

412

413

414

415

416

417

418

419

420

421

422

423

424

425

426

427

428

429

430

431

432

433

434

435

436

437

438

GEORGE BASS DRIVE

ROAD

1307 74TH ST.

13

1

2

3

4

5

6

7

8

9

10

11

12

13

14

15

16

17

18

19

20

0 100

11/12/07

74th St.

No. Date

A 11/12/07

B 74th St.

C

D

E

F

G

H

I

J

K

L

M

N

O

P

Q

R

S

T

U

V

W

X

Y

Z

AA

AB

AC

AD

AE

AF

AG

AH

AI

AJ

AK

AL

AM

AN

AO

AP

AQ

AR

AS

AT

AU

AV

AW

AX

AY

AZ

BA

BB

BC

BD

BE

BF

BG

BH

BI

BJ

BK

BL

BM

BN

BO

BP

BQ

BR

BS

BT

BU

BV

BW

BX

BY

BZ

CA

CB

CC

CD

CE

CF

CG

CH

CI

CJ

CK

CL

CM

CN

CO

CP

CQ

CR

CS

CT

CU

CV

CW

CX

CY

CZ

DA

DB

DC

DD

DE

DF

DG

DH

DI

DJ

DK

DL

DM

DN

DO

DP

DQ

DR

DS

DT

DU

DV

DW

DX

DY

DZ

EA

EB

EC

ED

EE

EF

EG

EH

EI

EJ

EK

EL

EM

EN

EO

EP

EQ

ER

ES

ET

EU

EV

EW

EX

EY

EZ

FA

FB

FC

FD

FE

FF

FG

FH

FI

FJ

FK

FL

FM

FN

FO

FP

FQ

FR

FS

FT

FU

FV

FW

FX

FY

FZ

GA

GB

GC

GD

GE

GF

GG

GH

GI

GJ

GK

GL

GM

GN

GO

GP

GQ

GR

GS

GT

GU

GV

GW

GX

GY

GZ

HA

HB

HC

HD

HE

HF

HG

HH

HI

HJ

HK

HL

HM

HN

HO

HP

HQ

HR

HS

HT

HU

HV

HW

HX

HY

HZ

IA

IB

IC

ID

IE

IF

IG

IH

II

IJ

IK

IL

IM

IN

IO

IP

IQ

IR

IS

IT

IU

IV

IW

IX

IY

IZ

JA

JB

JC

JD

JE

JF

JG

JH

JI

IJ

JK

JL

JM

JN

JO

JP

JQ

JR

JS

JT

JU

JV

JW

JX

JY

JZ

KA

KB

KC

KD

KE

KF

KG

KH

KI

KJ

KL

KM

KN

KO

KP

KQ

KR

KS

KT

KU

KV

KW

KX

KY

KZ

LA

LB

LC

LD

LE

LF

LG

LH

LI

LJ

LK

LL

LM

LN

LO

LP

LQ

LR

LS

LT

LU

LV

LW

LX

LY

LZ

MA

MB

MC

MD

ME

MF

MG

MH

MI

MJ

MK

ML

MM

MN

MO

MP

MQ

MR

MS

MT

MU

MV

MW

MX

MY

MZ

NA

NB

NC

ND

NE

NF

NG

NH

NI

NJ

NK

NL

NM

NN

NO

NP

NQ

NR

NS

NT

NU

NV

NW

NX

NY

NZ

OA

OB

OC

OD

OE

OF

OG

OH

OI

OJ

OK

OL

OM

ON

OO

OP

OQ

OR

OS

OT

OU

OV

OW

OX

OY

OZ

PA

PB

PC

PD

PE

PF

PG

PH

PI

PJ

PK

PL

PM

PN

PO

PP

PQ

PR

PS

PT

PU

PV

PW

PX

PY

PZ

QA

QB

QC

QD

QE

QF

QG

QH

QI

QJ

QK

QL

QM

QN

QO

QP

QQ

QR

QS

QT

QU

QV

QW

QX

QY

QZ

RA

RB

RC

RD

RE

RF

RG

RH

RI

RJ

RK

RL

RM

RN

RO

RP

RQ

RR

RS

RT

RU

RV

RW

RX

RY

RZ

SA

SB

SC

GEORGE BASS DRIVE

ROAD

1307 74TH ST.

13

1

2

3

4

5

6

7

8

9

10

11

12

13

14

15

16

17

18

19

20

0 100 FEET

11/12/07

7405

No. Date

A 11/12/07

B 7405

C

D

E

F

G

H

I

J

K

L

M

N

O

P

Q

R

S

T

U

V

W

X

Y

Z

AA

AB

AC

AD

AE

AF

AG

AH

AI

AJ

AK

AL

AM

AN

AO

AP

AQ

AR

AS

AT

AU

AV

AW

AX

AY

AZ

BA

BB

BC

BD

BE

BF

BG

BH

BI

BJ

BK

BL

BM

BN

BO

BP

BQ

BR

BS

BT

BU

BV

BW

BX

BY

BZ

CA

CB

CC

CD

CE

CF

CG

CH

CI

CJ

CK

CL

CM

CN

CO

CP

CQ

CR

CS

CT

CU

CV

CW

CX

CY

CZ

DA

DB

DC

DD

DE

DF

DG

DH

DI

DJ

DK

DL

DM

DN

DO

DP

DQ

DR

DS

DT

DU

DV

DW

DX

DY

DZ

EA

EB

EC

ED

EE

EF

EG

EH

EI

EJ

EK

EL

EM

EN

EO

EP

EQ

ER

ES

ET

EU

EV

EW

EX

EY

EZ

FA

FB

FC

FD

FE

FF

FG

FH

FI

FJ

FK

FL

FM

FN

FO

FP

FQ

FR

FS

FT

FU

FV

FW

FX

FY

FZ

GA

GB

GC

GD

GE

GF

GG

GH

GI

GJ

GK

GL

GM

GN

GO

GP

GQ

GR

GS

GT

GU

GV

GW

GX

GY

GZ

HA

HB

HC

HD

HE

HF

HG

HH

HI

HJ

HK

HL

HM

HN

HO

HP

HQ

HR

HS

HT

HU

HV

HW

HX

HY

HZ

IA

IB

IC

ID

IE

IF

IG

IH

II

IJ

IK

IL

IM

IN

IO

IP

IQ

IR

IS

IT

IU

IV

IW

IX

IY

IZ

JA

JB

JC

JD

JE

JF

JG

JH

JI

IJ

JK

JL

JM

JN

JO

JP

JQ

JR

JS

JT

JU

JV

JW

JX

JY

JZ

KA

KB

KC

KD

KE

KF

KG

KH

KI

KJ

KK

KL

KM

KN

KO

KP

KQ

KR

KS

KT

KU

KV

KW

KX

KY

KZ

LA

LB

LC

LD

LE

LF

LG

LH

LI

LJ

LK

LL

LM

LN

LO

LP

LQ

LR

LS

LT

LU

LV

LW

LX

LY

LZ

MA

MB

MC

MD

ME

MF

MG

MH

MI

MJ

MK

ML

MM

MN

MO

MP

MQ

MR

MS

MT

MU

MV

MW

MX

MY

MZ

NA

NB

NC

ND

NE

NF

NG

NH

NI

NJ

NK

NL

NM

NN

NO

NP

NQ

NR

NS

NT

NU

NV

NW

NX

NY

NZ

OA

OB

OC

OD

OE

OF

OG

OH

OI

OJ

OK

OL

OM

ON

OO

OP

OQ

OR

OS

OT

OU

OV

OW

OX

OY

OZ

PA

PB

PC

PD

PE

PF

PG

PH

PI

PJ

PK

PL

PM

PN

PO

PP

PQ

PR

PS

PT

PU

PV

PW

PX

PY

PZ

QA

QB

QC

QD

QE

QF

QG

QH

QI

QJ

QK

QL

QM

QN

QO

QP

QQ

QR

QS

QT

QU

QV

QW

QX

QY

QZ

RA

RB

RC

RD

RE

RF

RG

RH

RI

RJ

RK

RL

RM

RN

RO

RP

RQ

RR

RS

RT

RU

RV

RW

RX

RY

RZ

SA

SB

GEORGE BASS DRIVE

ROAD

1307 74TH ST.

13

1

2

3

4

5

6

7

8

9

10

11

12

13

14

15

16

17

18

19

20

0 100 FEET

11/12/07

7405

No. Date

A 11/12/07

B 7405

C

D

E

F

G

H

I

J

K

L

M

N

O

P

Q

R

S

T

U

V

W

X

Y

Z

AA

AB

AC

AD

AE

AF

AG

AH

AI

AJ

AK

AL

AM

AN

AO

AP

AQ

AR

AS

AT

AU

AV

AW

AX

AY

AZ

BA

BB

BC

BD

BE

BF

BG

BH

BI

BJ

BK

BL

BM

BN

BO

BP

BQ

BR

BS

BT

BU

BV

BW

BX

BY

BZ

CA

CB

CC

CD

CE

CF

CG

CH

CI

CJ

CK

CL

CM

CN

CO

CP

CQ

CR

CS

CT

CU

CV

CW

CX

CY

CZ

DA

DB

DC

DD

DE

DF

DG

DH

DI

DJ

DK

DL

DM

DN

DO

DP

DQ

DR

DS

DT

DU

DV

DW

DX

DY

DZ

EA

EB

EC

ED

EE

EF

EG

EH

EI

EJ

EK

EL

EM

EN

EO

EP

EQ

ER

ES

ET

EU

EV

EW

EX

EY

EZ

FA

FB

FC

FD

FE

FF

FG

FH

FI

FJ

FK

FL

FM

FN

FO

FP

FQ

FR

FS

FT

FU

FV

FW

FX

FY

FZ

GA

GB

GC

GD

GE

GF

GG

GH

GI

GJ

GK

GL

GM

GN

GO

GP

GQ

GR

GS

GT

GU

GV

GW

GX

GY

GZ

HA

HB

HC

HD

HE

HF

HG

HH

HI

HJ

HK

HL

HM

HN

HO

HP

HQ

HR

HS

HT

HU

HV

HW

HX

HY

HZ

IA

IB

IC

ID

IE

IF

IG

IH

II

IJ

IK

IL

IM

IN

IO

IP

IQ

IR

IS

IT

IU

IV

IW

IX

IY

IZ

JA

JB

JC

JD

JE

JF

JG

JH

JI

IJ

JK

JL

JM

JN

JO

JP

JQ

JR

JS

JT

JU

JV

JW

JX

JY

JZ

KA

KB

KC

KD

KE

KF

KG

KH

KI

KJ

KK

KL

KM

KN

KO

KP

KQ

KR

KS

KT

KU

KV

KW

KX

KY

KZ

LA

LB

LC

LD

LE

LF

LG

LH

LI

LJ

LK

LL

LM

LN

LO

LP

LQ

LR

LS

LT

LU

LV

LW

LX

LY

LZ

MA

MB

MC

MD

ME

MF

MG

MH

MI

MJ

MK

ML

MM

MN

MO

MP

MQ

MR

MS

MT

MU

MV

MW

MX

MY

MZ

NA

NB

NC

ND

NE

NF

NG

NH

NI

NJ

NK

NL

NM

NN

NO

NP

NQ

NR

NS

NT

NU

NV

NW

NX

NY

NZ

OA

OB

OC

OD

OE

OF

OG

OH

OI

OJ

OK

OL

OM

ON

OO

OP

OQ

OR

OS

OT

OU

OV

OW

OX

OY

OZ

PA

PB

PC

PD

PE

PF

PG

PH

PI

PJ

PK

PL

PM

PN

PO

PP

PQ

PR

PS

PT

PU

PV

PW

PX

PY

PZ

QA

QB

QC

QD

QE

QF

QG

QH

QI

QJ

QK

QL

QM

QN

QO

QP

QQ

QR

QS

QT

QU

QV

QW

QX

QY

QZ

RA

RB

RC

RD

RE

RF

RG

RH

RI

RJ

RK

RL

RM

RN

RO

RP

RQ

RR

RS

RT

RU

RV

RW

RX

RY

RZ

SA

SB

GEORGE BASS DRIVE

ROAD

1307 74TH ST.

13

1

2

3

4

5

6

7

8

9

10

11

12

13

14

15

16

17

18

19

20

0 100 FEET

11/12/07

7405

No. Date

A 11/12/07

B 7405

C

D

E

F

G

H

I

J

K

L

M

N

O

P

Q

R

S

T

U

V

W

X

Y

Z

AA

AB

AC

AD

AE

AF

AG

AH

AI

AJ

AK

AL

AM

AN

AO

AP

AQ

AR

AS

AT

AU

AV

AW

AX

AY

AZ

BA

BB

BC

BD

BE

BF

BG

BH

BI

BJ

BK

BL

BM

BN

BO

BP

BQ

BR

BS

BT

BU

BV

BW

BX

BY

BZ

CA

CB

CC

CD

CE

CF

CG

CH

CI

CJ

CK

CL

CM

CN

CO

CP

CQ

CR

CS

CT

CU

CV

CW

CX

CY

CZ

DA

DB

DC

DD

DE

DF

DG

DH

DI

DJ

DK

DL

DM

DN

DO

DP

DQ

DR

DS

DT

DU

DV

DW

DX

DY

DZ

EA

EB

EC

ED

EE

EF

EG

EH

EI

EJ

EK

EL

EM

EN

EO

EP

EQ

ER

ES

ET

EU

EV

EW

EX

EY

EZ

FA

FB

FC

FD

FE

FF

FG

FH

FI

FJ

FK

FL

FM

FN

FO

FP

FQ

FR

FS

FT

FU

FV

FW

FX

FY

FZ

GA

GB

GC

GD

GE

GF

GG

GH

GI

GJ

GK

GL

GM

GN

GO

GP

GQ

GR

GS

GT

GU

GV

GW

GX

GY

GZ

HA

HB

HC

HD

HE

HF

HG

HH

HI

HJ

HK

HL

HM

HN

HO

HP

HQ

HR

HS

HT

HU

HV

HW

HX

HY

HZ

IA

IB

IC

ID

IE

IF

IG

IH

II

IJ

IK

IL

IM

IN

IO

IP

IQ

IR

IS

IT

IU

IV

IW

IX

IY

IZ

JA

JB

JC

JD

JE

JF

JG

JH

JI

IJ

JK

JL

JM

JN

JO

JP

JQ

JR

JS

JT

JU

JV

JW

JX

JY

JZ

KA

KB

KC

KD

KE

KF

KG

KH

KI

KJ

KL

KM

KN

KO

KP

KQ

KR

KS

KT

KU

KV

KW

KX

KY

KZ

LA

LB

LC

LD

LE

LF

LG

LH

LI

LJ

LK

LL

LM

LN

LO

LP

LQ

LR

LS

LT

LU

LV

LW

LX

LY

LZ

MA

MB

MC

MD

ME

MF

MG

MH

MI

MJ

MK

ML

MM

MN

MO

MP

MQ

MR

MS

MT

MU

MV

MW

MX

MY

MZ

NA

NB

NC

ND

NE

NF

NG

NH

NI

NJ

NK

NL

NM

NN

NO

NP

NQ

NR

NS

NT

NU

NV

NW

NX

NY

NZ

OA

OB

OC

OD

OE

OF

OG

OH

OI

OJ

OK

OL

OM

ON

OO

OP

OQ

OR

OS

OT

OU

OV

OW

OX

OY

OZ

PA

PB

PC

PD

PE

PF

PG

PH

PI

PJ

PK

PL

PM

PN

PO

PP

PQ

PR

PS

PT

PU

PV

PW

PX

PY

PZ

QA

QB

QC

QD

QE

QF

QG

QH

QI

QJ

QK

QL

QM

QN

QO

QP

QQ

QR

QS

QT

QU

QV

QW

QX

QY

QZ

RA

RB

RC

RD

RE

RF

RG

RH

RI

RJ

RK

RL

RM

RN

RO

RP

RQ

RR

RS

RT

RU

RV

RW

RX

RY

RZ

SA

SB

SC