

Clive Lucas, O.B.E., B.Arch., D.Sc.(Arch.)(*honoris causa*), Sydney,
L.F.R.A.I.A., F.R.S.A.
Registered Architect No. 2502
Nominated Architect

Ian Stapleton, B.Sc.(Arch.), B.Arch., Grad. Dip. Env. Law, F.R.A.I.A.
Registered Architect No. 4032

Hector Abrahams, B.Sc.(Arch.), B.Arch., R.A.I.A.
Registered Architect No. 5245

Associate:

Sean Johnson, B.A., Dip.Arch., M.Sc.(Arch.Cons.), R.A.I.A.
Registered Architect No. 4728

CLIVE LUCAS STAPLETON & PARTNERS

Architects & Heritage Consultants

A.C.N. 002 584 189 A.B.N. 60 763 960 154

Clive Lucas Stapleton & Partners Pty Ltd
155 Brougham Street, Kings Cross,
Sydney, 2011 Australia

Telephone: 61 (02) 9357 4811

Facsimile: 61 (02) 9357 4603

Email: mailbox@clsparchitects.com

Website: www.clsparchitects.com

SJ:gp

21st May 2012

The General Manager
Newcastle City Council
282 King Street
NEWCASTLE NSW 2300

Attn: Ms Fiona Leatham
Senior Project Manager

Dear Sir,

Re: Newcastle Regional Museum, Workshop Way, Newcastle – New Gates

We refer to the gates and fence proposed to span between the north elevations of the former Locomotive Boiler Shop and Blacksmiths Shop as shown on the enclosed drawings.

The gates are considered necessary to prevent unauthorised entry and vandalism (e.g. graffiti) in the area in front of the new museum entrance outside opening hours.

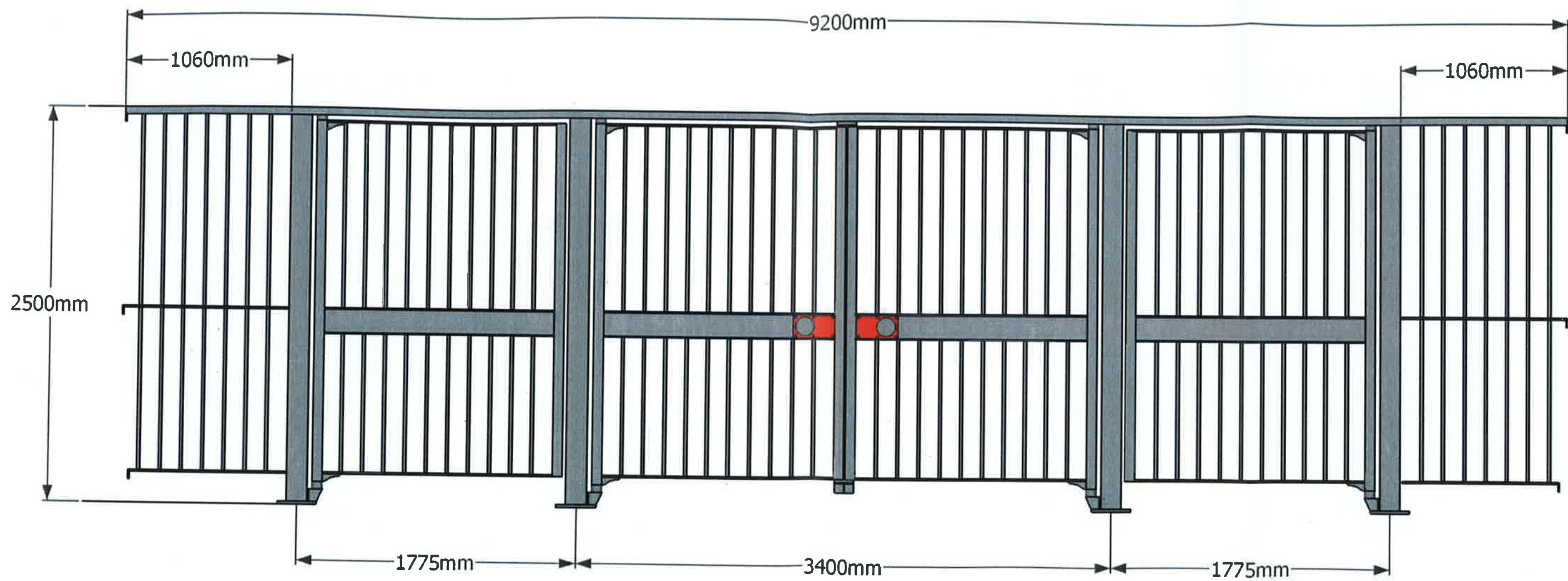
The gates are of a neutral contemporary design in keeping with the new elements of the museum, are set back from the corner of the buildings and, provided they are painted a dark colour, will not detract from the appreciation of the north elevation. They have been designed to touch the buildings lightly, and will be reversible with minimal damage to significant building fabric, providing fixings are confined to the joints of the brickwork.

In our opinion the proposed gates will have negligible heritage impact and should be approved by the relevant authority.

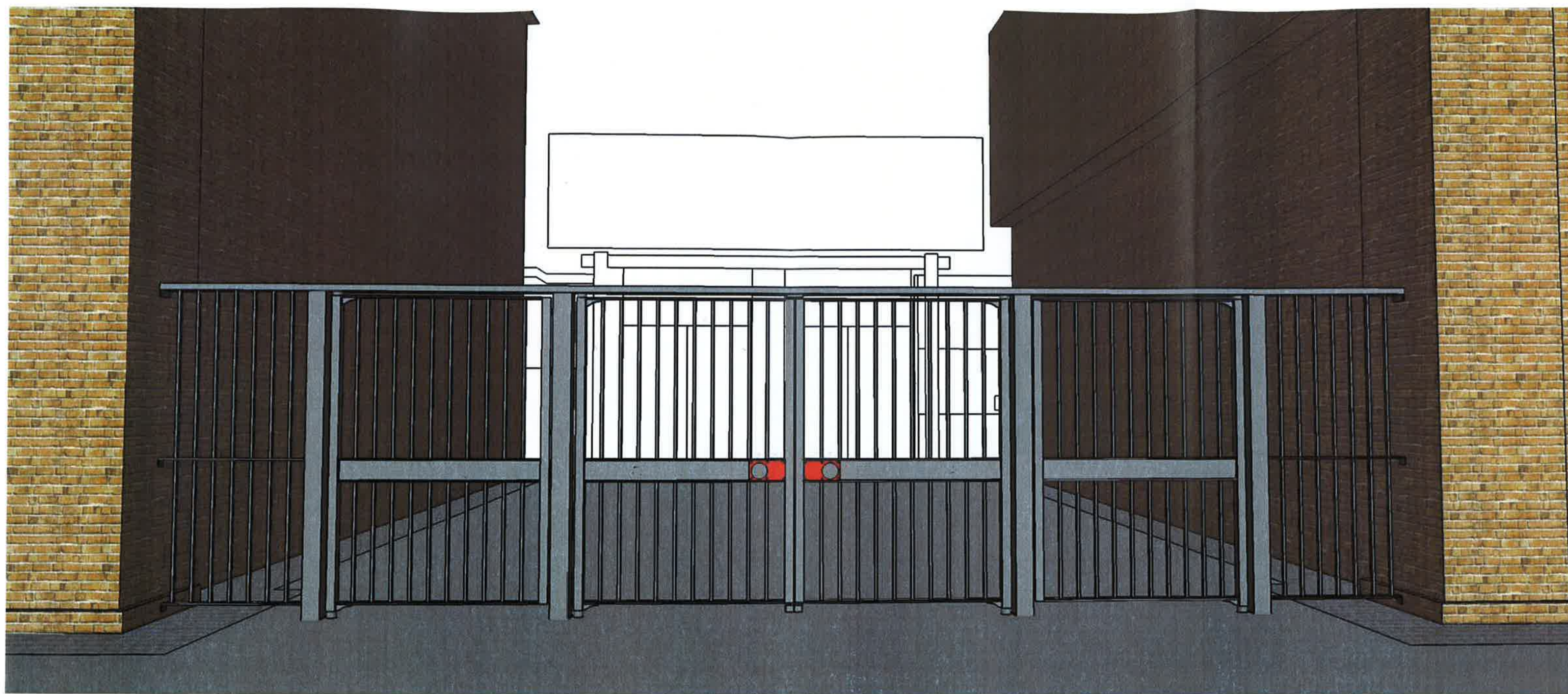
Yours faithfully



Sean Johnson
Clive Lucas, Stapleton & Partners Pty. Ltd.
Architects and Heritage Consultants
Encls. Drawings numbered 21/5/12 – (1-7)
Copy to Elizabeth Carpenter, FJMT Architects



21/5/12 - 1

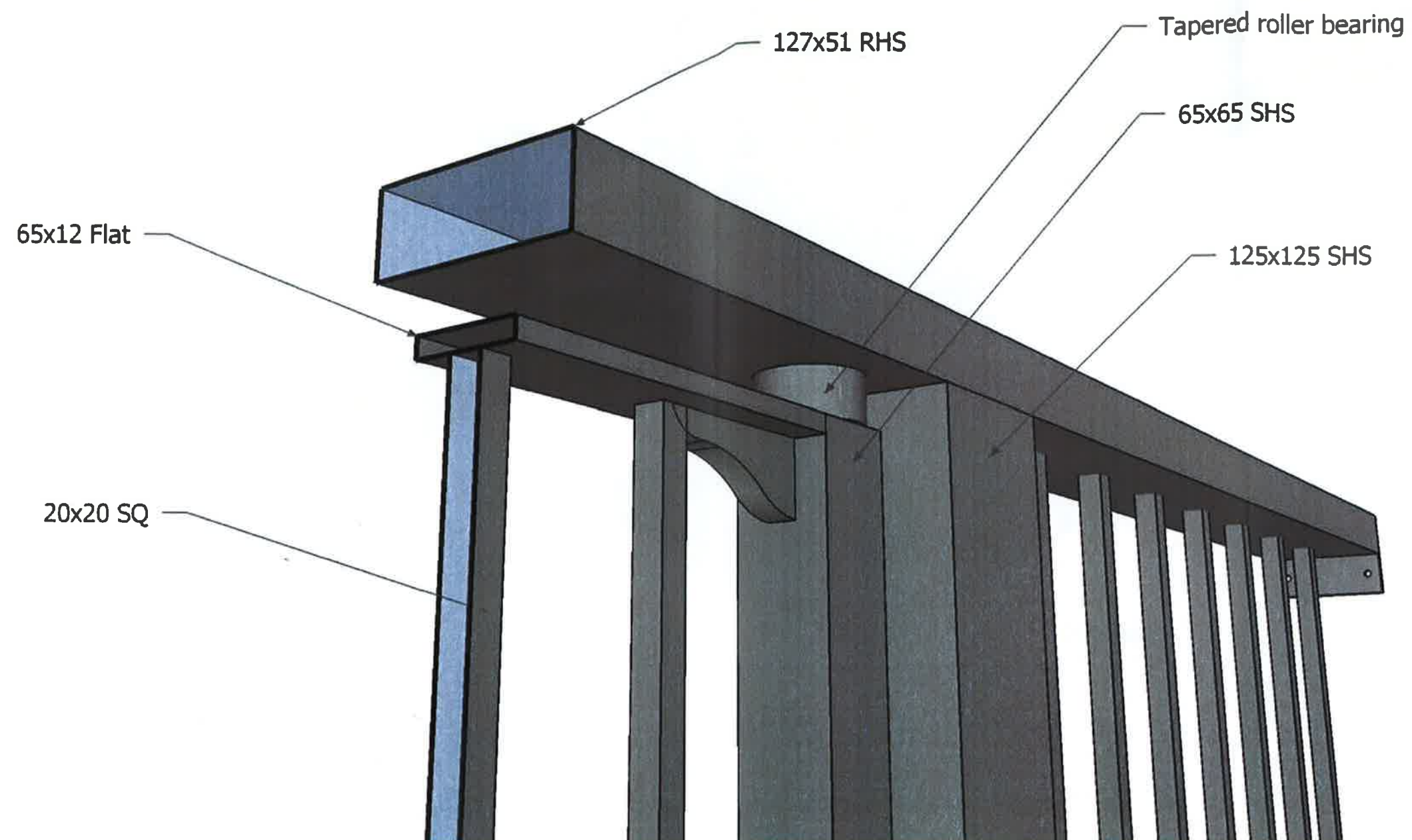


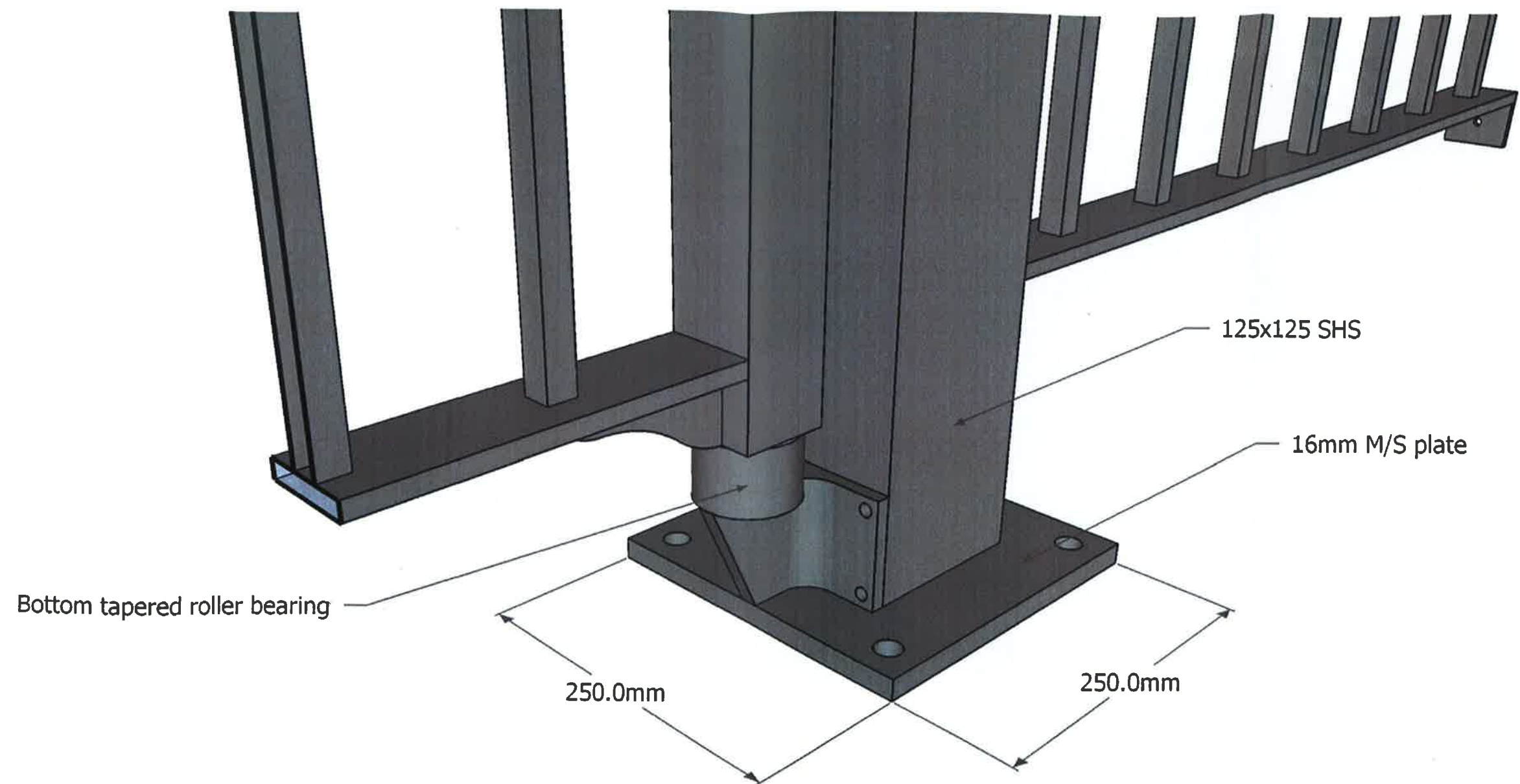
2/15/12 - 2



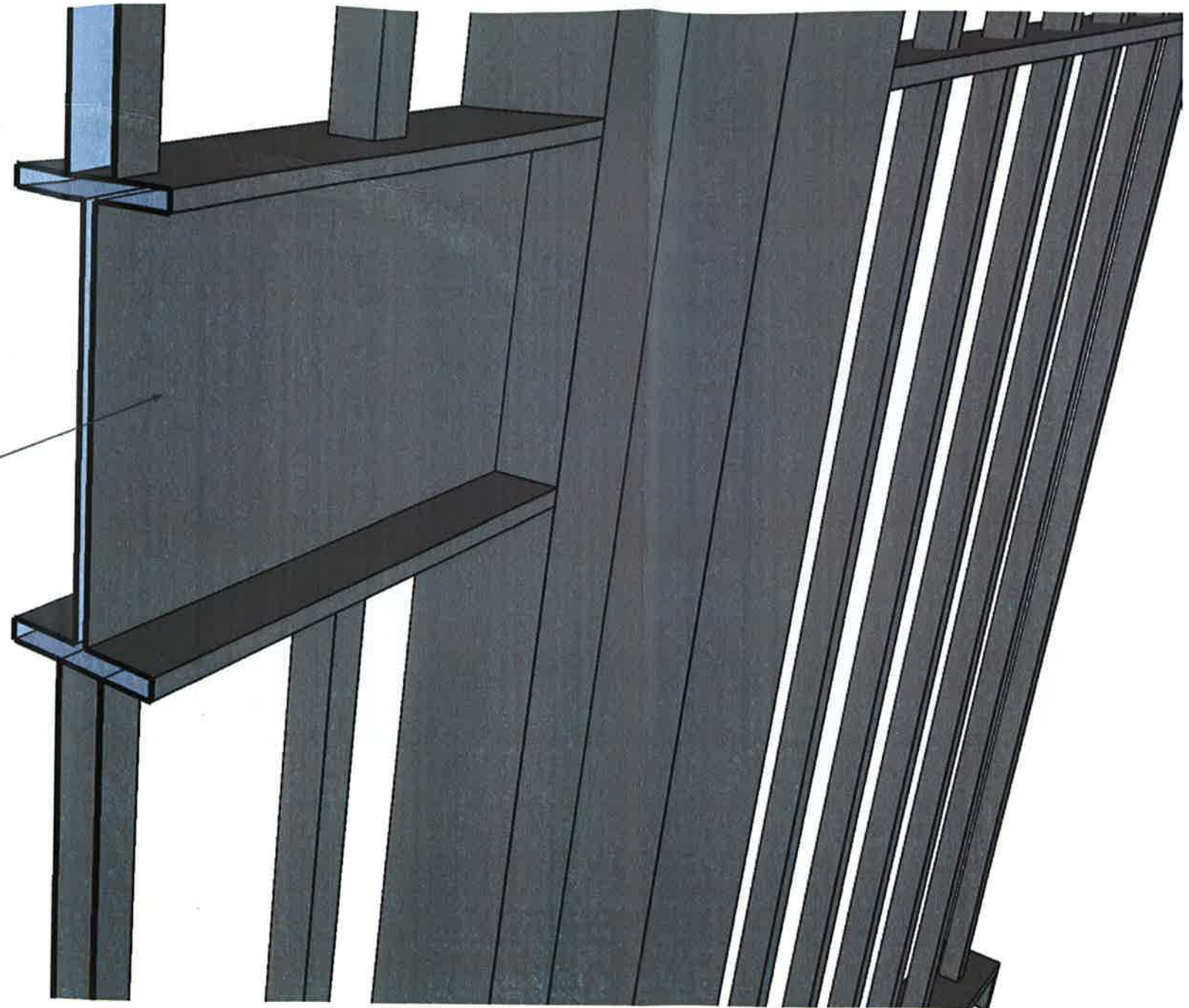
21/5/12 - 3







150 UB



21/5/12-7