

Part A

Introduction

Preamble

This Part introduces the proposal to develop an open cut coal mine within and adjacent to the existing Glennies Creek Colliery (the “Project”). This Part provides information on:

- the scope and format of the document;*
- the Proponent;*
- the importance and uses of coal resources in NSW, Australia and globally;*
- the history of mining at the Glennies Creek Colliery and the Camberwell Coal Mine and the background to the Project;*
- other Part 3A applications currently being assessed for the Glennies Creek Colliery;*
- the proposed approach towards environmental management and further documentation; and*
- the personnel involved in the Project design, document preparation and specialist consultant investigations.*



This page has intentionally been left blank



A1 SCOPE

Integra Coal Operations Pty Ltd (ICO), “the Proponent”, proposes to further develop the coal resources within and immediately adjacent to the Glennies Creek Colliery, approximately 12km north of Singleton in the Hunter Valley coal mining district of NSW (**Figure A1**). The proposed “Glennies Creek Open Cut Coal Mine” (‘the Project’) would target coal recoverable by open cut methods within an area referred to as the “Project Site” adjacent to the northern boundary of the former Camberwell North Pit.

The Project Site which is the subject of this assessment lies wholly within land zoned 1(a) under Singleton Local Environmental Plan (LEP) 1996. The plan identifies that “coal mining” is a permissible land use within the Project Site, ie. with development consent (or project approval) under the *Environmental Planning and Assessment Act 1979*.

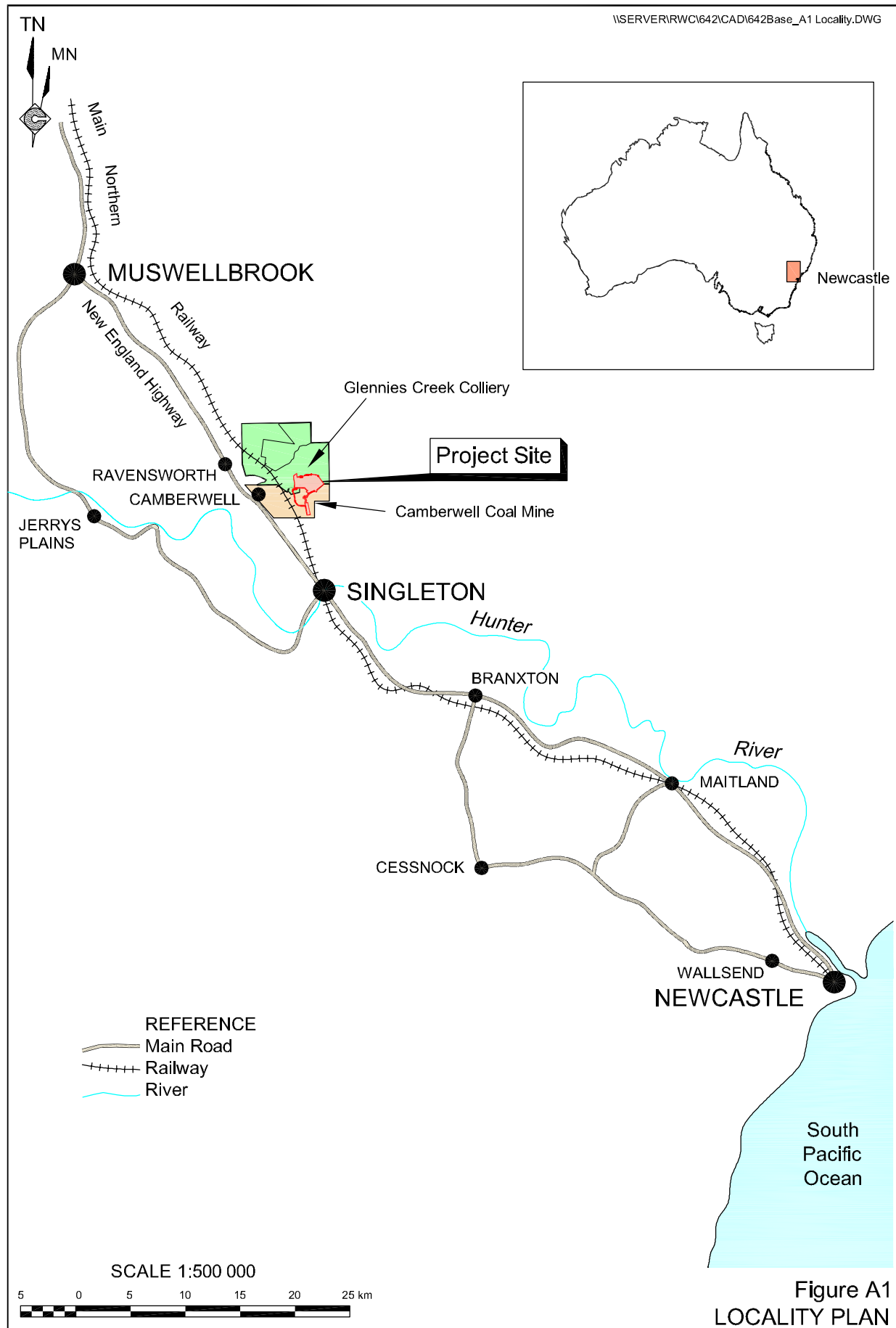
This *Environmental Assessment* has been prepared by R.W. Corkery & Co. Pty Ltd to accompany the Proponent’s application for project approval for the Project. A copy of the Major Projects Application lodged with the Department of Planning on 23 February 2006 for the Project is reproduced in **Appendix 1**. The *Environmental Assessment* describes the Project and presents a comprehensive environmental assessment undertaken for the Project, including management controls and measures identified to mitigate potential impacts and ensure the defined coal resource is mined in an environmentally responsible manner.

The Project is classified as a ‘Major Project’ under the *State Environmental Planning Policy (Major Projects) 2005* and hence the application for project approval is to be assessed under Part 3A of the *Environmental Planning and Assessment Act 1979*, with the Minister for Planning as the approval authority.

The application for project approval relates to the following proposed activities.

- Extraction of 7.7Mt of run-of-mine (ROM) coal by open cut mining methods over approximately 6 years at a maximum rate of extraction of 1.5Mt of ROM coal per year.
- Extraction of additional ROM coal through highwall or auger mining methods. The quantity of coal to be extracted by this method would be dependent upon economic, geological, geotechnical and operational constraints during the operation of the proposed open cut.
- Extraction of overburden and interburden material, as well as construction of an overburden emplacement within and adjacent to the proposed open cut.
- Transportation of ROM coal to the Camberwell Coal Handling and Preparation Plant (CHPP) either directly from the open cut or via intermediate stockpiles within the area of the proposed open cut or the approved Glennies Creek RL100 Stockpile Area.
- Storage and washing of ROM coal, despatch of product coal from the Camberwell CHPP and placement of fine reject material.
- Ancillary activities, including construction and use of an access road and site facilities area, as well as clearing and stripping of the areas to be disturbed.





Project approval is sought for each of these activities for the life of the proposed open cut.

It is noted that the Camberwell CHPP and Haul Route E are the subject of previous approvals for the Glennies Creek Colliery and Camberwell Coal Mine. However, as those previous approvals do not contemplate the use of coal sourced from the proposed Glennies Creek Open Cut Mine, this application contains further assessment of those activities having regard to the transportation and processing of coal from the Glennies Creek Open Cut Mine using Haul Route E and the Camberwell CHPP.

The information provided in this document is presented to a level of detail which adequately addresses all relevant issues identified by the various stakeholders including Government agencies, surrounding residents and the local community (refer to Part C). Emphasis has been placed upon comprehensively addressing the key issues and limiting coverage of those issues that are not central to the determination of the project approval application. This approach is consistent with Director-General's requirements issued for the Project (see **Appendix 2**).

A2 DOCUMENT FORMAT

This *Environmental Assessment* has been structured to satisfy the directives included in the Director-General's requirements, particularly as they relate to the expectations of the Department of Planning for the environmental assessment of a Major Project to focus upon key issues of interest to the community and relevant State and local government agencies.

The format of the *Environmental Assessment* is as follows.

- Part A:** introduces the Project and the Proponent and explains the relationship of the Project to the existing Glennies Creek Colliery and other Part 3A applications being prepared for the Colliery's ongoing operations. A brief overview of the Colliery's history is provided. Information is also presented on the ongoing documentation (ie. Mining Operations Plan and Annual Environmental Management Reports) intended for the Project as well as details related to the management of investigations during the preparation of this *Environmental Assessment*.
- Part B:** provides a description of the proposed Glennies Creek Open Cut Coal Mine including the Project's objectives, the coal resources, and activities required to establish and operate the mine. Details of the proposed open cut mining, waste rock emplacement, hours of operation and mine life, progressive and final rehabilitation and a description of the Biodiversity Offset Strategy are provided.
- Part C:** outlines the results of the consultation undertaken with Government agencies and the community and issues raised for coverage in this document. This Part also outlines the relevant State and regional planning instruments and provides the outcomes of a general environmental risk analysis undertaken to establish the specific environmental risk(s) posed by issues identified.
- Part D:** provides a description of various aspects of the existing environment, proposed impact mitigation measures and management controls, and an assessment of the residual impacts of the Project. Where appropriate, proposed environmental monitoring is outlined.



- Part E:** provides a draft statement of commitments the Proponent proposes to implement with respect to environmental management and monitoring from site establishment, through the operational phase of the proposed open cut to decommissioning.
- Part F:** presents an evaluation of the entire Project assuming the adoption of all of the Proponent's commitments. The proposed direct and indirect impacts are then justified, particularly in light of the principles of Ecologically Sustainable Development.
- Part G:** lists the various source documents referred to for information and data used during the preparation of the *Environmental Assessment*.
- Part H:** presents a glossary of acronyms, technical terms, symbols and units used throughout this document.
- Appendices:** present the following additional information.

Appendix 1. A copy of the Proponent's Major Projects Application.

Appendix 2. A copy of the Director-General's requirements and a tabulated summary of those requirements and the *Environmental Assessment* requirements provided by other government agencies which identifies where each requirement is addressed in the *Environmental Assessment*.

Appendix 3. A copy of the initial Glennies Creek Community Newsletter and a table which summarises all comments made and concerns raised by the community regarding the proposed Glennies Creek Open Cut Coal Mine.

This *Environmental Assessment* is supported by a two-volume *Specialist Consultant Studies Compendium* incorporating reports prepared by eight specialist environmental consultancies covering nine different environmental aspects of the Project. The contents of these reports, including the identified key issues, have been summarised into the appropriate Part(s) of this *Environmental Assessment*.

A3 THE PROPONENT

Integra Coal Operations Pty Ltd (Integra) is the management Company responsible for the operation of the Glennies Creek Colliery and the Camberwell Coal Mine. The Integra Coal Project was formed in August 2006 through the integration of the Glennies Creek and Camberwell joint ventures. Both Glennies Creek Coal Management Pty Ltd (GCCM) and Camberwell Coal Pty Ltd (Camberwell) are wholly owned by Integra Coal Operations Pty Ltd. The participants of the Integra joint venture are as follows.

- CVRD Australia Pty Ltd (61.2%) through subsidiary companies CVRD Australia (GC) Pty Ltd (36%) and Maitland Main Collieries Pty Ltd (25.2%) *
- NS Glennies Creek Pty Limited (3.6%) *



- POS – GC Pty Ltd (3.6%) *
- JS Glennies Creek Pty Ltd (1.8%) *
- JFE Steel (GC) Pty Ltd (1.8%) *
- Toyota Tsusho Mining (Australia) Pty Ltd (11.2%)
- Navidale Pty Ltd (14%)
- Toyota Tsusho Corporation (Australia) Pty Ltd (2.8%).

The joint venture parties identified with an asterisk comprise the Glennies Creek joint venture participants.

The major shareholder, CVRD Australia Pty Ltd is a subsidiary of Comanhia Vale to Rio Doce, a Brazilian mining company which ranks as the second largest mining company in the world.

A4 COAL USE AND MARKETS

Coal is primarily used in electricity production, with 39% of global electricity production generated from coal. Smaller amounts of coal are used for industrial, residential and metallurgical coking purposes. Coal is the principal form of reductant in the metallurgical industries, with around 70% of world steel production dependent on coal (Australian Coal Association, 2007).

Coal from seams in the Glennies Creek area are bituminous, high volatile, low sulphur and vitrinite rich and, after washing, are of low ash content. The low sulphur content of the Glennies Creek Open Cut coal provides potential for it to be blended with higher sulphur coals to allow strict environmental standards to be met. The low ash content after washing meets export specifications for coking and thermal purposes.

Black coal is Australia's largest commodity export, with exports worth approximately \$24.5 billion in 2005-06. Australia is also the world's largest single coal exporter with exports of 233 Mt in 2005-06, or approximately 30% of the world total. Total production of saleable black coal in Australia in 2005 was approximately 308Mt (Australian Coal Association 2007).

With respect to overseas coal markets, Australia's share in 2004 represented 20% of thermal coal sales and 60% of metallurgical coal sales worldwide (Australian Coal Association, 2007).

Australian coal is exported to more than 35 countries around the world. Japan and other Asian economies account for more than 80% of the export market for Australian coal, with smaller amounts exported to Europe, South America and South Africa (Australian Coal Association, 2007).



A5 GLENNIES CREEK COLLIERY AND CAMBERWELL COAL MINE OPERATIONS

A5.1 Introduction

Since August 2006, both the Glennies Creek Colliery and Camberwell Coal Mine have been integrated as the Integra Coal Project although the underlying mining tenements continue to be held by the original participants in the relevant joint ventures. It is noted that mining leases and other formal documents respectively remain in the names of Glennies Creek Coal Management Pty Ltd and Camberwell Coal Pty Ltd, the operating companies prior to the integration of the operations in August 2006.

This section provides an overview of both operations, given the planned inter-relationships between each operation and the proposed Glennies Creek Open Cut Coal Mine.

Figure A2 presents the various mining tenements for the Glennies Creek Colliery and the Camberwell Coal Mine.

A5.2 Glennies Creek Colliery

A5.2.1 History and Existing Approvals

Major interest in the development of the coal resource in the area now referred to as the Glennies Creek Colliery commenced in the mid 1970s with the extensive exploration culminating in the lodgement of a development application for an underground mine in August 1990. Following a Commission of Inquiry in mid 1991, development consent was granted in November 1991. Details of this development consent and other relevant approvals, licences and leases are as follows.

- Development Consent (DA 105/90) – granted 1 November 1991 by the then Minister for Planning. This consent has been modified five times since it was first granted to allow for minor modifications/upgrades to the overall mining operation.
- Project Approval 06_0057 – granted 30 January 2007 for surface facilities and activities.
- Mining Leases – a coal lease (CL382), a total of three mining leases (MLs 1437, 1518 and 1551), a Mining Lease Application (MLA303) and an exploration licence (EL5824) have been issued for the Glennies Creek Colliery by the Department of Primary Industries – Mineral Resources or its predecessor Departments. **Table A1** presents details of each of the leases which are relevant to the proposed open cut, together with Camberwell's Coal Lease (CL357), while **Figure A2** presents a plan showing the location of the relevant tenements. Each of the Glennies Creek Colliery leases is held in the names of the Glennies Creek joint venture participants listed in Part A3.



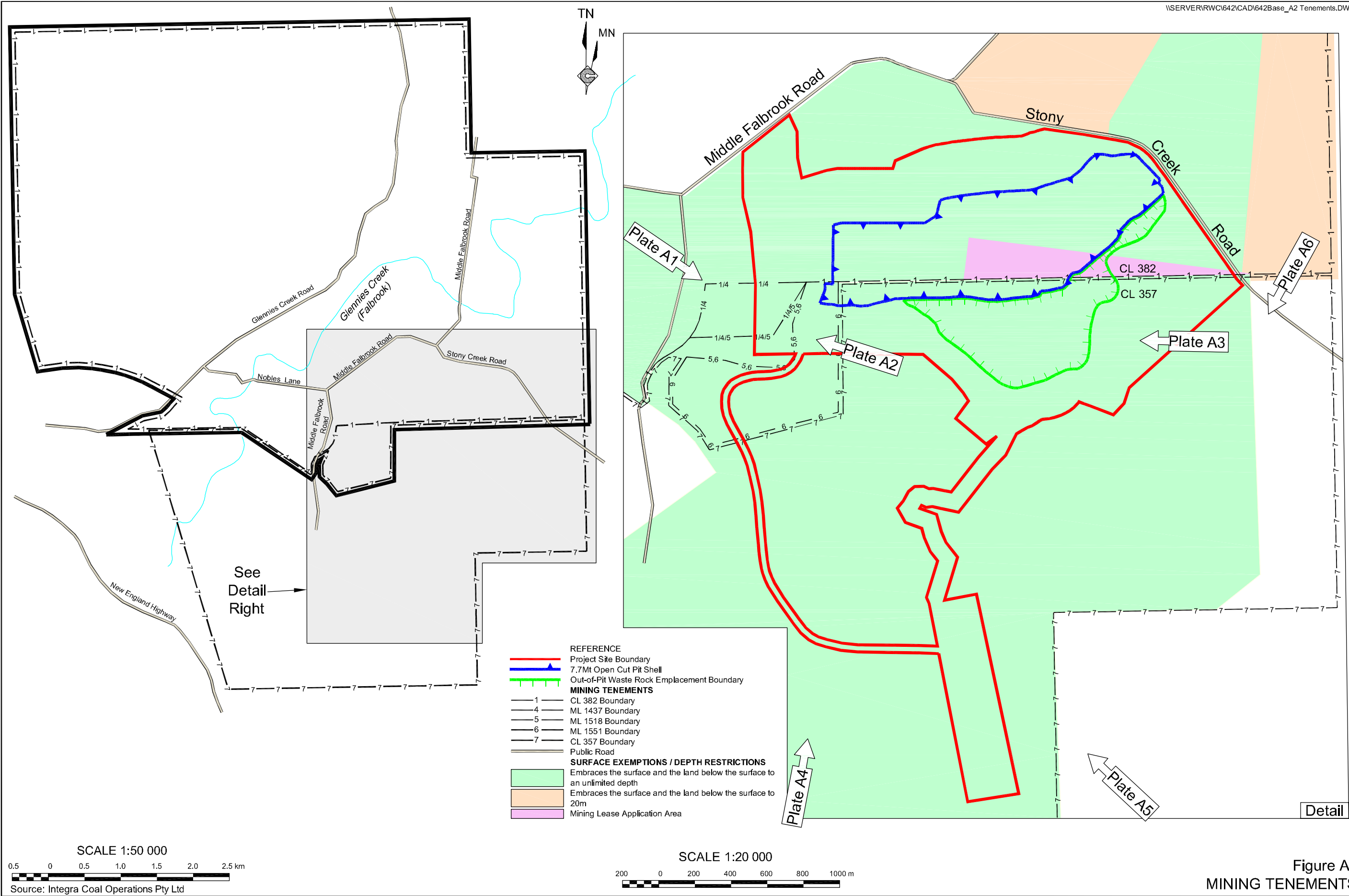


Table A1
Mining Tenements Relevant to Proposed Open Cut

Lease*	Area (ha)	Expiry Date	Relevance
CL 382	4 070	11.11.2012	The proposed open cut mining operation is located largely within the southern corner of this lease.
CL357	1 667	27.03.2011	This lease is held by Camberwell Coal Pty. Ltd.
ML 1437	14.8	27.03.2011	Encompasses Glennies Creek Colliery portal area.
ML 1518	9.6	27.03.2011	Encompasses the RL100 Stockpile Area.
ML 1551	43.13	27.03.2011	Encompasses a Part of Haul Route E.
MLA303	19.6	-	Encompasses a section of CL 382 with a restriction on mining-related activities from the surface to a depth of 20m.

* See Figure A2

- Environment Protection Licence (EPL) 7622 for coal mining, including coal works – conveyor and stockpile, on a scale of 3 500 000tpa to 5 000 000tpa saleable coal produced.
- Dangerous Goods Licence 35/034651.
- A total of eight Water Access Licences (484, 485, 690, 691, 1172, 1173, 1242 and 10095) and six Bore Licences (20BL/ 167917, 169571, 169573, 169574, 169862 and 169864) for the dewatering of the underground mine workings and for monitoring purposes, all of which are issued in perpetuity.
- Approvals for longwall mining from Department of Primary Industries – Mineral Resources for Longwall Panels LW1 to LW9 (within the Middle Liddell seam).

Each of the tenements identified in **Table A1** and relevant surface exemptions/depth restrictions are shown on **Figure A2**. It is noted that applications will be lodged by the appropriate parties with the Department of Primary Industries - Mineral Resources to extend the tenure of each of the leases listed in **Table A1**. In addition, the participants in the Glennies Creek joint venture have initiated an application for a new mining lease to cover an area subject to the surface exemption and depth restriction.

A5.2.2 Operations to Date

Initial mining operations commenced in October 1996 with major on-site activities commencing in December 1998. Underground mine development commenced in May 1999. Since that time, the Glennies Creek Colliery has been developed in three stages.

- **Stage 1** - Development of three entries in the Middle Liddell seam from the highwall of the Camberwell North Pit (May 1999 to April 2000).
- **Stage 2** - Development of the five heading Northwest Mains to prove mining conditions, and the installation of the initial longwall gateroads (June 2000 to August 2002).



- **Stage 3** - Installation and operation of a longwall unit with a maximum face width to date of 250m and associated development workings (August 2002 to date).

The surface facilities, located adjacent to the former Oak Park School House, were primarily established during Stages 1 and 2.

Plates A1 and **A2** display the current components of the existing operations within the Glennies Creek Colliery. The Pit Top Area boundary is highlighted on both plates.

Underground operations at the Glennies Creek Colliery produce a high quality, semi-hard coking coal for the export market, with the current approved coal production level set at 4.5 million tonnes per annum (Mtpa) ROM coal.



Plate A1: An oblique aerial view to the southeast across the Glennies Creek Colliery Pit Top Facilities in the foreground and Camberwell CHPP in the middle distance. Ref: E642-F128.

Plate A2: An oblique aerial view to the northwest towards the Glennies Creek Colliery Portal Area and Pit Top Facilities. Ref: E642-F019.



A5.2.3 Ongoing and Proposed Operations

Planned future underground operations include:

- completion of coal extraction within Longwall Panels 10 to 17 in the Middle Liddell seam (by financial year 2012 - 2013);
- development of underground access and infrastructure to enable mining of the Hebden and Barrett seams; and
- transfer of underground operations to the Hebden and Barrett seams.

In addition to the Part 3A application for the proposed open cut mine, the Proponent has prepared a separate application for project approval for underground coal mining of Longwall Panels 10 to 17 within the Middle Liddell seam in order to bring the activities at the Colliery under Part 3A of the EP&A Act. The respective areas covered by these applications are identified on **Figure A3**.

A5.2.4 Environmental Management and Performance

The Proponent operates the Glennies Creek Colliery in accordance with an environmental management system incorporating a range of elements designed to ensure that all environmental issues are proactively managed.

Environmental management on site is managed by Integra's Manager Safety and Environment with the assistance of GCCM's Safety and Environment Advisor. The Manager Safety and Environment reports directly to Integra's General Manager who has ultimate responsibility for environmental management on site. In addition to these two dedicated positions, all site personnel have environmental responsibilities included as part of their current work descriptions. Environmental issues are regularly covered in site toolbox meetings.

Glennies Creek Coal Management Pty Ltd has held Environment Protection Licence (EPL) 7622 since 1999 and, prior to that time, held Pollution Control Licence 7622. Since coal production commenced in 1999, the Colliery has only recorded two non-compliances against its licence, both related to longwall emulsion spills in 2003.

A5.2.5 Community / Stakeholder Relationship

In 1999, a Community Consultative Committee was established for the Glennies Creek Colliery. This Committee, which has operated continuously since that time, meets on a six monthly basis to discuss issues that members of the local community have raised with committee members relating to the operation of Glennies Creek Colliery, and to inform committee members of current and proposed operations and activities at the Colliery. The Committee includes a Singleton Shire Councillor, an officer of Singleton Shire Council, two landowner/residents from the surrounding local area, and two representatives from the mine, including the Safety and Environment Advisor.

Complaints with respect to the Colliery's performance are managed through an established management procedure involving complaints recording, follow-up and investigation. Complaint levels have typically ranged between 10 and 18 per year since 2005, with the majority of complaints pertaining to noise or lighting.

A5.3 Camberwell Coal Mine

A5.3.1 History and Existing Approvals

Operations at the Camberwell Coal Mine commenced in 1991 and include an open cut coal mine, a coal handling and preparation plant (Camberwell CHPP) and associated coal handling and rail loading facilities. The operations are managed by Integra Coal Operations Pty Ltd.



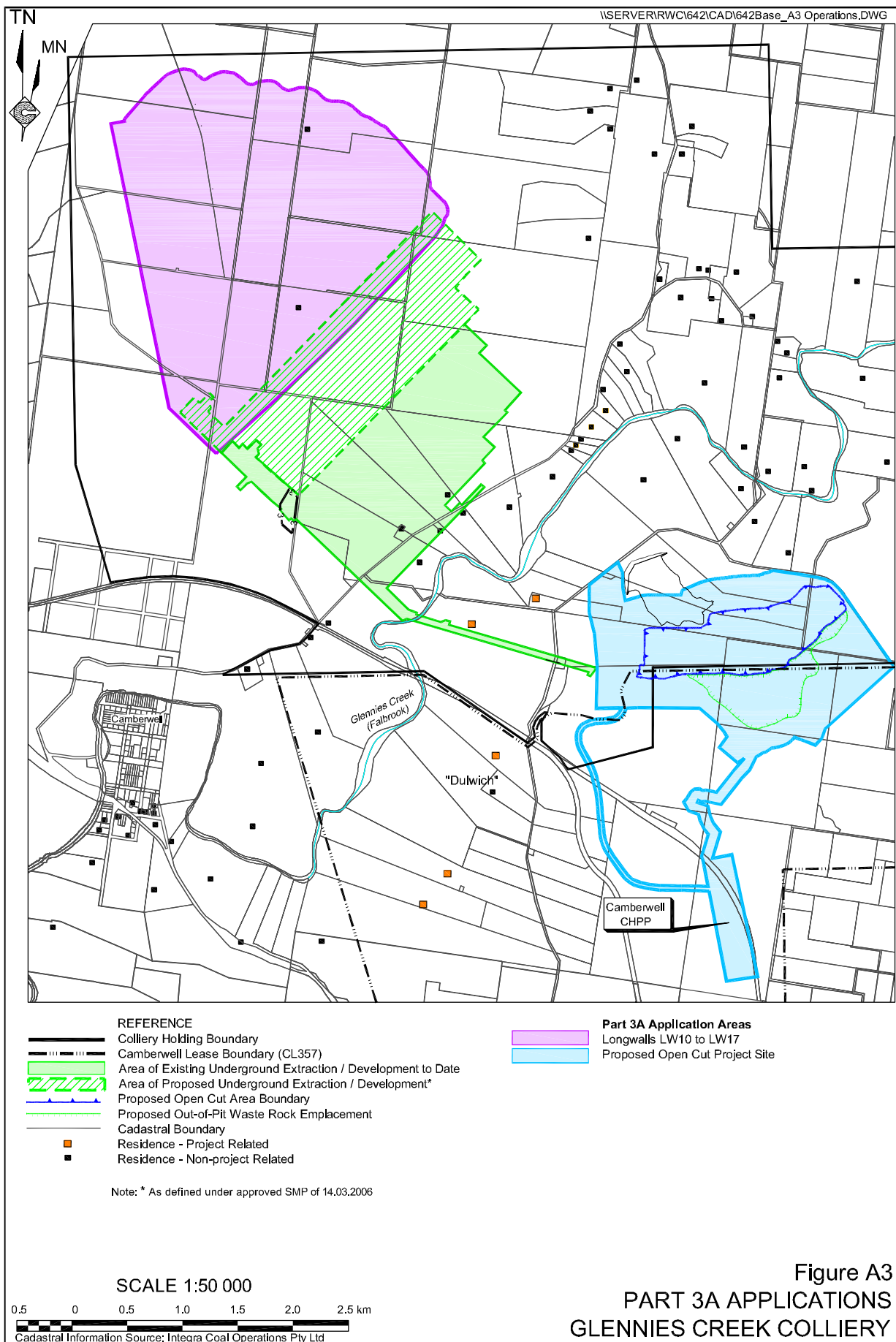


Figure A3
PART 3A APPLICATIONS
GLENNIES CREEK COLLIERY



Details of the various approvals and leases are as follows.

- Development Consent (DA 86/2889) – granted on 18 March 1990 by the then Minister for Planning. This consent has been modified on five occasions, including to provide for an increase in throughput in the CHPP (to 1200 tph) and to process coal originating from the Glennies Creek Underground Mine.
- Mining Leases – three tenements are held covering the operations across the Camberwell Coal Mine namely Coal Lease 357 (Renewal Date 27/02/2011) and Authorisations A44 and A81 (Renewals pending).
- Environment Protection Licence (EPL) 3390 for coal mining and coal works. The licence is relevant to a scale of 2 000 000tpa to 3500 000tpa saleable coal produced and >5 million tonnes of coal products loaded.
- Dangerous Goods Licence No 07-100005-001.
- A total of seven Water Access Licences (20CA / 201042, 200941, 200531, 200847, 200847 (supplementary), 201232 and 20BL169513), all of which are extraction licences.

A5.3.2 Operations to Date

Since 1991, multi-seam open cut mining has occurred principally within two pits, referred to as the North and South Pits. Mining ceased in the North Pit in 1999 and the bulk of the pit was backfilled leaving a small section in the northwestern corner without backfill to enable access to the Glennies Creek Colliery via a portal on the former highwall. Mining commenced in the South Pit in 1997 and is approved to yield up to 3.8Mtpa ROM coal by open cut methods. **Plates A3 and A4** display the largely backfilled North Pit and the activities in the South Pit.

The Camberwell CHPP has approval to process coal from both the Camberwell South Pit and the Glennies Creek Underground Mine until 18 March 2011 after which a further approval will be required. **Plate A5** displays the Camberwell CHPP and **Plate A6** shows Tailings Dam TD2, the tailings dam currently used to store tailings from the Camberwell CHPP.

A5.3.3 Ongoing and Proposed Operations

Planned operations within the Camberwell Coal Mine include the continuation of open cut mining in the South Pit until late 2009 after which it is proposed to develop a western extension in CL357 covering an area of up to 350ha, ie. subject to receipt of the necessary approvals.

Prior to March 2011, ie. the expiry of DA 86/2889, Integra Coal Operations Pty Limited intends to seek a further project approval for the long term use of the Camberwell CHPP, train loader and related facilities given that those facilities are to be used for the processing and despatch of coal from the Glennies Creek Colliery over the life of that operation.





Plate A3: View to the west across the rehabilitated northern slopes of the Camberwell North Pit.
Ref. E642-F085



Plate A4: View to the north across the Camberwell South Pit.
Ref. E642-F118



Plate A5: View to northwest across Camberwell CHPP.
Ref. E642-F140.



Plate A6: View to the southwest across the Camberwell Tailings Storage Dam TD2. Ref. E642-F106.



A5.3.4 Environmental Management and Performance

The Proponent operates Camberwell Coal Mine in accordance with an environmental management system incorporating a range of elements designed to ensure that all environmental issues are proactively managed.

Environmental management of the Camberwell Coal Mine is managed by Integra's Manager Safety and Environment with the assistance of Camberwell's Environmental Advisor. As is the case at the Glennies Creek Colliery, all site personnel have environmental responsibilities included as part of their current work descriptions and environmental issues are regularly covered in site toolbox and management meetings.

A5.3.5 Community / Stakeholder Relationship

A Community Consultative Committee was established for Camberwell Coal in December 2002. This Committee, which has operated continuously since that time, meets on a six monthly basis to discuss issues that members of the local community have raised with committee members relating to the operation of Camberwell Coal Mine, and to inform committee members of current and proposed operations and activities at the Coal Mine. The Committee includes a Singleton Shire Councillor, an officer of Singleton Shire Council, four landowner/residents from the surrounding local area, and two representatives from the mine, including Camberwell's Environmental Advisor.

Camberwell Coal Mine provides newsletters to surrounding residents and supports many local community organisations.

Camberwell Coal Mine has a complaints management procedure in place and, in all cases, complaints are followed up and, where possible, issues resolved by consultation. Complaint levels have averaged 23 per year since 2002, with the majority of concerns related to blasting.

A6 ENVIRONMENTAL MANAGEMENT AND DOCUMENTATION

Ongoing environmental management at the Glennies Creek Open Cut Coal Mine, including the Proponent's performance with respect to this document and the implementation of all relevant approval, licence or lease conditions, would be the responsibility of the General Manager. The Manager Safety and Environment would be responsible for managing all day-to-day environment-related matters in accordance with the site's overall environmental management system. The existing system would be updated to reflect the range of commitments and conditional requirements associated with the open cut mine.

An important component of the ongoing environmental management of the proposed open cut mine would be the development and use of the documentation required by the Department of Primary Industries - Mineral Resources and Department of Planning, including the Mining Operations Plan and Annual Environmental Management Reports.



Mining Operations Plan (MOP)

A MOP, accepted by Department of Primary Industries – Mineral Resources, would be required prior to the commencement of open cut mining. The MOP would provide a greater level of detail with respect to mining operations, rehabilitation and site environmental management than the *Environmental Assessment*, as well as including any additional procedures or management controls required to meet relevant project approval conditions. Notwithstanding the limited life of the project, it is envisaged that an initial MOP would be prepared covering the first four years of the Project, with a subsequent MOP submitted covering the final years of the Project and incorporating a mine closure plan.

The MOP would include the following information.

- **Introduction** - including a brief history of the operation, approvals, leases and licences and background information, mine geology, land ownership and consultation, reporting procedures and management responsibilities.
- **Pre-MOP Environment** - providing a brief description of topography, drainage, groundwater, soils, heritage, ecology, surrounding residences and services. This information would effectively be drawn from this *Environmental Assessment*.
- **Land Preparation** - providing details on land clearing, soil types and their physical and chemical characteristics, soil stripping, stockpiling and management.
- **Mining-related Activities** - describing buildings, facilities and services to be installed and maintained, and detailing mining operations (including sequencing) as well as in-pit and out-of-pit waste rock emplacement design and construction.
- **Rehabilitation** - describing the short term and long term rehabilitation objectives, the final landform and land uses, rehabilitation procedures to be employed and the sequence of progressive rehabilitation.
 - detailing the biodiversity offset strategy for the Project.
- **Environmental and Rehabilitation Risk Assessment** - presenting an evaluation of the risk of environmental harm as a result of each of the mine's component activities.
- **Environmental Management Controls** - describing the management, ie. diversion, storage and disposal of clean and/or sediment-laden water, and erosion and sediment management. Design details for all water management structures to be installed during the life of the mine would be presented.
 - describing the noise and air quality design controls for each stage of the Project including mining, waste rock emplacement and internal transportation.



- outlining the ecological controls to provide for the appropriate clearing, storage, re-spreading of vegetation and establishment of future corridors for native vegetation.
- outlining the monitoring program for aspects such as air quality, noise, water, blasting and meteorology and the contingency plans to respond to emergencies, incidents or any deficiency in environmental performance identified through monitoring or consultation.

Annual Environmental Management Report (AEMR)

An AEMR would be required annually for submission to the Department of Planning, Department of Primary Industries – Mineral Resources, Department of Environment and Climate Change, Department of Water and Energy and Singleton Council. Each AEMR would provide the opportunity to record actual performance and environmental impacts and to compare the impacts against those predicted in this *Environmental Assessment*, as well as to evaluate the effectiveness of the environmental management controls and monitoring and amend them, as required.

Each AEMR would provide the following information, where relevant.

- **Introduction:** - Environmental objectives of the Project and reporting period for the report.
- **Summary of Operations:** - Information on site establishment and/or construction activities, coal production levels, ROM coal transport, overburden / interburden emplacement, water use and dewatering levels and progressive rehabilitation / final landform preparation.
- Plans for the following 12 months of operations relating to coal production levels, ROM coal transport, overburden / interburden emplacement, progressive rehabilitation and final landform preparation.
- **Environmental Management and Monitoring:** - Monitoring data and a comparison with statutory criteria and predictions.
- Alterations/improvements to environmental management.
- An assessment of compliance with lease, licence and project approval conditions.
- **Community Relations** - Results of consultation with surrounding landholders, the wider community and the Community Consultative Committee.
- **Rehabilitation** - Activities undertaken during the reporting period including a review of progress with previous rehabilitation activities.



The initial AEMR would be submitted approximately 12 months after the commencement of mining-related activities.

A7 MANAGEMENT OF INVESTIGATIONS

This *Environmental Assessment* has been prepared by R.W. Corkery & Co. Pty. Limited. Rob Corkery (B.Sc.(Hons), M.Appl.(Sc)) co-ordinated the preparation of the document and also undertook the internal review. The formative work for the document was compiled by Kim Ferguson ((B.Env.Sc) Merit Honours) who also managed the Community Consultation component relating to the Project. Management of the completion of the document was undertaken by Mitchell Bland (B.Sc(Hons), M.EconGeol).

The document was compiled with the assistance of the following personnel from the Proponent.

- Sean Egan (B.E. (Min)), General Manager Business Development, AMCI Australia Pty. Ltd.
- Bob Corbett (B.Sc. (For)), Group Manager Environment, AMCI Australia Pty. Ltd.
- Mr Steve Kovac (B.E. (Mining)), Manager Technical Services, Integra Coal Operations Pty Ltd.
- Mr Chris Smith (B.E. (Mining), MBA), Project Manager, Integra Coal Operations Pty Ltd.
- Geoff MacKenzie, Manager Safety and Environment, Integra Coal Operations Pty Ltd.
- Ken Barry (B.Env.Sc; GradCert.Min.Res), Safety and Environment Advisor, Glennies Creek Coal Management Pty Ltd.

The team of specialist consultants which assisted in the preparation of the various assessments incorporated into the *Environmental Assessment* are listed below with reference to the number of their individual reports in the *Specialist Consultant Studies Compendium*.

- Part 1 (Volume 1) – Holmes Air Sciences Pty Ltd (*Air Quality Assessment*).
- Part 2 (Volume 1) – Heggies Pty Ltd (*Noise and Blasting Assessment*).
- Part 3 (Volume 1) – Countrywide Ecological Service (*Fauna Assessment*).
- Part 4 (Volume 1) – Geoff Cunningham Natural Resource Consultants Pty Ltd (*Flora Assessment*).
- Part 5 (Volume 2) – HLA Envirosciences Pty Ltd (*Aboriginal Heritage Assessment*).
- Part 6 (Volume 2) – Geoff Cunningham Natural Resource Consultants Pty Ltd (*Soils Assessment*).
- Part 7 (Volume 2) – PSM Australia Pty Ltd (*Surface Water Assessment*).
- Part 8 (Volume 2) – Australasian Groundwater and Environmental Consultants Pty Ltd (*Groundwater Assessment*).
- Part 9 (Volume 2) – The Allen Consulting Group (*Socio-Economic Assessment*).

