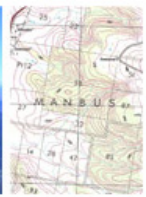


Kyoto energypark

Appendix N

Community Participation Plan
Pamada Pty Ltd



COMMUNITY PARTICIPATION PLAN

Introduction

Pamada has worked closely with the local community and key stakeholders throughout the duration of the project. A Community Register was generated in the early stages of the project to identify key stakeholders and generate awareness and understanding of the project through a consultation program. The document was prepared to generate awareness, create participation and feedback during the planning and approval stages of the project. The objective of the plan was to engage community members and encourage active feedback from people in the locality, businesses and those who share an interest in the project. Pamada has been committed to engaging these groups in an open and transparent manner. In order to meet this commitment Pamada has prepared and put into place an extensive and ongoing community participation plan from which commenced from a very early stage of the project to engage community awareness and overall participation in the project.

Pamada has undertaken extensive consultation with relevant Government agencies, service providers, key stakeholders and the local community residents to fully investigate potential environmental and social concerns relating to the project and locality. Pamada was required to prepare an Environmental Assessment (EA) report as a requirement of the Director General of the NSW Department of Planning (DoP) and in accordance with Part 3A of the Environment Planning and Assessment Act 1979. During the preparation of the assessment Pamada has collated and prioritised the issues raised by Government authorities, the community and other stakeholders.

This document describes the community consultation process, general outcomes and the prioritization of issues from the community.

The consultation component of the EA process will comprise two sections as follows:

- Liaison with a range of government and other stakeholders;
- Liaison with the local community, local organizations and business groups.

The consultation activities have both informed the community and stakeholders of the project and allowed any issues of concern to be raised at an early stage of the planning process and incorporated into the Environmental Assessment (EA).

The Participation Plan has formed the basis of the community engagement program to be used by Pamada staff, Public relations agencies and environmental consultants when discussing the project with community and government agencies during the investigation and reporting stages of the project. The document also includes records of community engagement outcomes and measures of effectiveness in providing accurate and transparent information about the proposal.

Government Consultation

Consultation with the Upper Hunter Shire Council was required during very early stages of the project with applications made for two wind monitoring towers installed on Mountain Station. In July 2003 Scone Shire Council (now amalgamated into Upper Hunter Council) granted development consent for a wind monitoring tower to EHN Pty Ltd. An application for a second monitoring tower was made by the landowner and was granted by the Upper Hunter Council in May 2005.

An amendment was made to the Scone LEP (1986) to allow for 'eco-generating works such as wind, solar, tidal and the like' to be considered in the shire (Scone LEP 1986 Amendment No 64). The draft LEP was placed on public exhibition from August to September 2005 and notification of approval was received by the Upper Hunter Council in December 2006. Public exhibition periods and notification of rezoning approval were advertised in local newspapers by the Upper Hunter Council (*Appendix A – Upper Hunter Council Media Release*)

Government departments, agencies and service provider's were consulted during the preparation of the Environmental Assessment (EA). Government Consultation has been both formal and informal with discussions used in refining the overall project planning and description. A Planning Focus Meeting was held on 31 January 2007 to inspect the sites and discuss formal requirements and issues that would need to be addressed in the EA. The Director Generals Requirements for assessment were received on 7 May 2007 which outlines specific issues that would need to be addressed in the EA. Ongoing, formal and informal consultation has also been conducted with the Department of Planning and other agencies during the assessment process. These interactions are discussed in more detail in the following sections.

Category	Groups Consulted
Approval Authority	NSW Department of Planning
Other Government Agencies	Department of Environment and Conservation Roads and Traffic Authority Department of Primary Industries (Minerals, Fisheries and Agriculture) Department of Natural Resources Hunter-Central Rivers Catchment Management Authority Energy Australia/Trans Grid NSW Rural Fire Service NSW Mine Subsidence Board Civil Aviation Safety Authority (CASA) Local Aboriginal Land Council and Key Indigenous Stakeholders Local Community

Local Councils	Upper Hunter Shire Council (Scone)
Federal Government Agencies	Commonwealth Department of Environment and Heritage Office of the Renewable Energy Regulator Civil Aviation Safety Authority Air Services Australia Department of Defence
Service Providers	Energy Australia Transgrid NEMMCO Telstra Emergency Service Operators

Pamada and individual consultants also consulted telecommunications service providers and emergency service providers during the preparation of this EA in order to identify any potential impacts of the proposed wind farm on telecommunications signals.

Pamada used the following methods to consult with government agencies and service providers:

- A Planning Focus Meeting held at Upper Hunter Shire Council Chambers Scone
- Assessment requests from the Director General
- Face to face meetings
- Consultation letters
- Copies of Community Newsletters sent to all Government department contacts
- General Correspondence and telephone discussions

Agencies organizations and departments were also contacted by individual consultants in preparation of specialist environmental studies on the two sites.

Planning Focus Meeting

Pamada held a Planning Focus Meeting (PFM) on 31st January 2007. Representatives of the following organizations attended the meeting:

Attended

- | | |
|--|------------------|
| • NSW Department of Planning (Infrastructure) | Neville Osborne |
| • NSW Department of Planning (Infrastructure) | Mark Turner |
| • NSW Department of Environment and Conservation | Mitchell Bennett |
| • Hunter-Central Rivers Catchment Management Authority | Steve Eceles |

- Upper Hunter Shire Council
- Upper Hunter Shire Council
- NSW Department of Primary Industries
- NSW Department of Primary Industries
- BBC Consulting Planners
- Pamada Pty Limited (the Proponent)
- Pamada Pty Limited (the Proponent)
- Middlebrook Scone Pty Limited (Landowner)

David Casson
Paul Smith
Cameron Ricketts
Julie Edman
Julie Horder
Mark Sydney
Jacquie Ryan
Allan Henderson

Apologies

- BBC Consulting Planners
- NSW Department of Planning (Hunter)
- NSW Department of Natural Resources
- NSW Rural Fire Service

Bob Chambers
Amy Blakely
Anthony Bryson
Doug Stevens



Photo taken at PFM at Mountain Station, Scone

Attendees visited the proposed sites for the Kyoto Energy Park project. A copy of the issues raised during the meeting is enclosed in *Appendix B – Minutes of Planning Focus Meeting*

Director General's Requirements

In accordance with Clause 73 of the EP&A Regulation 2000 Pamada received the requirements of the Director General of the Department of Planning (DGRs) on 7 May 2007.

Supplementary Environmental Assessment requirements were also attached to the DGRs from the following departments:

- NSW Department of Environment and Conservation
- Department of Natural Resources
- Hunter-Central Rivers Catchment Management Authority
- Upper Hunter Shire Council
- NSW Rural Fire Service

These requirements were used as the formal structure for Environmental Assessment for the project for individual consultants.

Face to Face Meetings

Representatives of the Kyoto Energy Park met with representatives of Upper Hunter Shire Council on a number of occasions both formally and through general briefings and discussions. These meetings included formal presentations to General Meetings of Council, briefings with Councilors, General Manager and Senior Planning Officers, and a presentation at a Council organized field day.

The purpose of the meetings was to keep Council informed of progress with the project and to discuss the following issues:

- Implications of location of proposed Kyoto Energy Park
- Permissibility with Upper Hunter Shire Council LEP
- The proposed community consultation process and current community issues in the project locality
- Emerging issues of concern with local residents and nearest neighbours
- Integration of the Kyoto Energy Park Infrastructure and long term land use strategies

Letters

Pamada on behalf of the Kyoto Energy Park sent a formal letter to relevant government agencies and service providers who either were not involved in the Planning Focus Meeting or who had not responded through the Director General's Requirements.

The letter described the proposed Energy Park and requested information into the matters that should be considered in the EA.

Government Consultation Letters

Category	Groups Consulted
Local Council	Upper Hunter Shire Council
Federal Government Agencies	Commonwealth Department of Environment and Heritage Office of the Renewable Energy Regulator Civil Aviation Safety Authority
NSW State Government	Energy Australia

Category	Groups Consulted
Local Council	Upper Hunter Shire Council
Federal Government Agencies	Commonwealth Department of Environment and Heritage Office of the Renewable Energy Regulator Civil Aviation Safety Authority
Authorities/Service Providers	Department of Environment and Conservation (DEC) Department of Lands Department of Lands – Office of the Surveyor General Department of Utilities, Energy and Sustainability NSW Heritage Office NSW Aboriginal Lands Council NSW Department of Primary Industries (Mineral Resources) NSW Government Radio Network NSW Police Service NSW Rural Fire Service NSW State Emergency Service

Community Information Updates

During the project Pamada produced a letter and a series of flyers (3) which were mailed to the Community and posted on the website. Copies of Community Information newsletters were sent to relevant contacts of representative Government Departments and agencies during the project. These newsletters are contained within Appendix C.

General Correspondence

General correspondence was made with Government representatives during the project planning stages either by individual consultants or directly with representatives of Pamada. These conversations were mainly via email and telephone with agencies and service providers to provide further information, discuss the issues raised and clarify details in the responses received.

Community Participation Strategy

A Community Participation Strategy was developed to ensure that the local landowners, residents and the wider community had a range of opportunities and avenues to information about the proposed Energy Park. The Plan also set out mechanisms for the community to provide comment on the proposal and for these comments to feed back into the EA process.

The key objectives of Pamada's consultation and participation strategy are to:

- Identify all key stakeholder groups and understand their interest in the project;
- Develop appropriate methods for engaging each stakeholder group;
- Provide the community with accurate information about the proposed energy park;
- Provide opportunities for the community to raise issues, make comments, ask questions and provide valuable local knowledge; and
- Indicate how the feedback received would be considered in the decision making process.

Identification of Key Interest Groups

Pamada identifies the following key interest groups:

- Local Aboriginal land council and cultural community;
- Local community groups;
- Local community (including nearest neighbours, landholders, adjoining residents, interested people in the broader community, local businesses, local service providers and elected members) and
- Non government organizations

Key Community Interest Groups Identified and Consulted

Category	Group
Local Aboriginal Community	Wanaruah Local Aboriginal Land Council
Local Community Groups	Scone Chamber of Commerce Country Women's Association Upper Hunter Landcare Group
Local Community	Local Residents Member for the Hunter - Federal Member for the Upper Hunter- State Local Government Councillors from Upper Hunter Shire Council Scone Rural Fire Service Scone Visitors Centre

Non Government Organizations	Australian Conservation Foundation (ACF) World Wide Fund for Nature (WWF) Threatened Species Network Australian Wind Energy Association (Auswind) Business Council for Sustainable Energy Greenpeace Planet Ark Nature Conservation Council of NSW Aerial Agricultural Association of Australia
------------------------------	---

Community Engagement

Pamada prepared a Community Participation Strategy involving a range of communication materials activities and events. Pamada developed the plan to provide appropriate methods for engaging groups of individuals (identified in the register), to provide different ways for the community to receive information and to provide a number of opportunities for feedback. The plan was extensive and broad reaching reflecting the anticipated lack of information for renewable energy developments in general.

Consultation has included the following activities to date:

- An introductory letter to local residents, community groups and businesses;
- mail distribution of Community Information newsletters (Jan 2007, Jul 2007, Jan 2008 – see);
- public response mechanisms (phone, fax, e-mail, letters);
- receipt of and response to phone calls, faxes, letters and other submissions;
- media coverage and advertisements;
- Presentations to key stakeholders and local business groups;
- advertisements in the local newspapers advertising Community Information Day;
- Community Information Day held in Scone
- Community attitude survey undertaken by Key Insights Pty Ltd as feedback to the information day;
- Kyoto Energy Park Website launched Oct 2007
- Face to Face meetings and group meetings with local residents
- Progress briefings at Council Meetings
- Meetings with Councilors and Senior Council Officers
- Presentation and visits to the proposed Kyoto Energy Park Site
- Opening of the Scone office in the main street for direct contact with local residents

Throughout each of these activities Pamada has strongly encouraged feedback from the community on all aspects of the proposed Kyoto Energy Park and the issues that should be addressed in this EA.

Each of these activities is described in more detail below. Appendix C contains a copy of main consultation material supplied to the community by Pamada.

Letters and Community Information Updates

A mailing register was set up with all identified stakeholders. Letters and flyers were sent to approximately 300 local residents, businesses and government departments. Flyers were also able to be viewed or downloaded from the Kyoto website.

- Pamada has sent an introductory letter and a series of flyers to the community, community groups organizations, business forums and government departments and agencies throughout the EA process as described below.
- **Community Information 1 January 2007.** A basic outline, description and location plan of the proposal including general benefits of the project and opportunities for Scone.
- **A formal letter 1 March 2007** Letter to local residents at the start of the environmental impact assessment process. The letter explained the feasibility of an energy park in Scone. The letter introduced an enquiry line for people to call and find out more about the project.
- **Community Information 2 July 2007** A description of the planning and approval process with anticipated timeframe. Outlining the benefits to the community and general facts.
- **Community Information 3 January 2008** A description of the global renewables market, Environmental Assessment Process, Community Information Day and contact details.

The brochures contained information about the EA process and was designed to encourage comments and feedback from the beginning of the project. The back page of the brochure invites the public to comment or find out more about the project via e-mail, phone, fax, post or via the project website.

These letters and flyers are attached in *Appendix C – Community letter and Information Updates*

Public Response Mechanisms

Pamada recognized that a number of response mechanisms were necessary to encourage the community to provide feedback on the proposed Kyoto Energy Park and the contents of the EA at all stages of the assessment process. Pamada set up the following response mechanisms:

- Scone Office in main street (Part Time staffing, generally 2 days per week. Appointments and meetings)
- Public Enquiry Line: 02 6545 9555
- Community Liason Officer (Scone Office)
- Kyoto Energy Park website: www.kyotoenergypark.com.au
- Email: info@pamada.com
- Fax: 02 9383 8321
- Post: Kyoto Energy Park, P O Box 35, SCONE NSW 2337

The Scone office was for meetings with community members discussions with residents and was operated on a part time basis by the Community Liason Officer. There was a considerable amount of emails, calls and lesser extent faxes received from local residents particularly the nearest affected neighbours. Most of the responses by Pamada have been sent via email and due to the detail and information required requested by the community. Some examples of the more frequent questions were for example:

- Distance from my residence to the proposed turbine
- Background noise at my house
- Number of visible turbines from my place
- Questions regarding devaluation of property

All Community queries were logged in a Community Register by the Liason Officer. A copy of these were sent to Key Insights Pty Ltd during the investigation into the Socio-economic study for the Energy Park. Key insights also received and responded to queries and concerns from residents via a formal letter or by discussion over the phone. All copies of correspondence and discussions with community were forwarded to Pamada .

Media Coverage and Advertisements

The project has generated extensive media coverage throughout the duration of the planning and investigation phases and is ongoing.

Some of the earlier media coverage generated is listed below and appears on the project website.

Media Coverage and Advertisements

Type	Subject	Date	Appeared In
Radio	Planning changes allow Scone to consider Wind Farms	19/12/06	ABC Radio Newcastle
Media Release, Upper Hunter Shire Council	Eco Generating LEP approved	21/12/06	Email from UHSC
Media Release	Green Light for Wind Farms	21/12/06	Scone Advocate
Media Release	Farm Site for Energy Centre	06/01/07	Newcastle Herald
Media Release	New Energy Future	08/01/07	Newcastle Herald
Media Release	New Wind Farms for Scone Turbines no stranger to UH	11/01/07	Scone Advocate
Media Release	Winds of change in power scheme	13/01/07	Newcastle Herald
Media Release	Green energy plan for Scone	17/01/07	Hunter Valley News
Advertisement	Chamber of Commerce Member Dinner	04/04/07	Shop Fronts
Media Release	The Man behind the energy plan Energy Park Plan Unveiled	12/04/07	Scone Advocate
Your Say	Is it the right site for a wind farm?	10/05/07	Scone Advocate
Your Say	Be part of the green revolution	17/05/07	Scone Advocate
Media Release	Energy Park plans to be assessed	14/06/07	Scone Advocate
Your Say	No wind farms in Scone	28/06/07	Scone Advocate
Council Briefs	Wind farms Concerns	26/07/07	Scone Advocate
Media Release	Ready for Publication (Scone High School – Newcastle Herald School Newspaper Competition	26/07/07	Scone Advocate
Media Release	Wind debate at CWA meeting	26/07/07	Scone Advocate
Comment by David Bauche	Wind debate is not black and white	26/07/07	Scone Advocate
Media Release	I don't want them in my backyard says windfarm neighbour – Not wanted here	16/08/07	Scone Advocate
Comment by David Bauche	Community must have their say	16/08/07	Scone Advocate
Your Say	Wind farms needed to save our valley	23/08/07	Scone Advocate
In Brief	Community want forum	23/08/07	Scone Advocate
Your Say	Energy junkies need their fix Wind turbine concerns Not in my secret valley	30/08/07	Scone Advocate
In Brief	Stop the Wind Farm Meeting	05/09/07	Hunter Valley News
Media Release	Wind farms to be discussed at meeting	06/09/07	Scone Advocate

Your Say	Why destroy the Horse Capital Support for opposition	06/09/07	Scone Advocate
Advertisement	Stop the Wind Farm	06/09/07	Mail Drop to Surrounding Landholders
Media Release	Anger grows over Scone wind farm	12/09/07	Hunter Valley News
Media Release	Anger at Wind Farm meeting	13/09/07	Scone Advocate
Media Release	Pamada denies knowledge of meeting	13/09/07	Scone Advocate
Your Say	Call for community to unite	13/09/07	Scone Advocate
Your Say	Wind farm opponent not credible	20/09/07	Scone Advocate
Your Say	Wind farms have benefits	20/09/07	Scone Advocate
Your Say	Industrial estate entry	27/09/07	Scone Advocate
Your Say	Industrial estate entry	27/09/07	Scone Advocate
Your Say	Response to wind farm claims	04/10/07	Scone Advocate
Your Say	Wind farm or airport	04/10/07	Scone Advocate
Media Release	Scone: Do you want to look at this?	04/10/07	Scone Advocate
Your Say	More information on wind farms	11/10/07	Scone Advocate
Your Say	SOS – Save our Scone	11/10/07	Scone Advocate
Your Say	Scone wind farm questions	18/10/07	Scone Advocate
Letter to the Editor	Why do we need a wind turbine industry in Scone?	18/10/07	Scone Advocate
Your Say	Wind on threatened species	25/10/07	Scone Advocate
Letter to the Editor	Call for council to protect Glen Range	01/11/07	Scone Advocate
Letter to the Editor	Comment on strategy	08/11/07	Scone Advocate
Letter to the Editor	Be aware of tower risk	08/11/07	Scone Advocate
Letter to the Editor	Strategy prompts call for local comment	08/11/07	Scone Advocate
Letter to the Editor	Turbine cane toads	22/11/07	Scone Advocate
Letter to the Editor	Loss of land value	22/11/07	Scone Advocate
Letter to the Editor	Turbines forgotten	22/11/07	Scone Advocate
Letter to the Editor	Wind turbines pose danger risk	06/12/07	Scone Advocate
Letter to the Editor	Windfarm blades spike fire fears	06/12/07	Hunter Valley News
Media Release	Wind farm impact	06/12/07	Scone Advocate
Letter to the Editor	Wind concern	13/12/07	Scone Advocate
Letter to the Editor	Negative winds	13/12/07	Scone Advocate
2 page Flyer	Upper Hunter Landscape Guardians	05/01/08	Mail Drop to Surrounding Landholders
Year in Review	Wind farm plans lodged	10/01/08	Scone Advocate
Letter to the Editor	We are not a garden club	10/01/08	Scone Advocate
Media Release	Guardians deliver wind message	16/01/08	Hunter Valley News
Letter to the Editor	Windfarm questions	30/01/08	Hunter Valley News
Letter to the Editor	Wind disappointment	30/01/08	Hunter Valley News
Letter to the Editor	Wind comments not true mood	28/02/08	Scone Advocate
Letter to the Editor	Shocked to hear about windfarm	28/02/07	Scone Advocate
Media Release	Will eagles dare	28/02/07	Scone Advocate
Letter to the Editor	What price wind farms?	28/02/08	The Land

Formal Presentations


Formal presentations were made at the initial stages of the project to address local business groups, councils and general interest groups.

- Upper Hunter Shire Council

- Scone Business Chamber of commerce (*Appendix D*)
- Country Women's Association Scone (CWA)
- Upper Hunter Council Field Day for students
- Wanaruah Local Aboriginal Land Council Muswellbrook Office

Community Information Day

Pamada held a Community Information Open Day on Saturday 16th February 2008 at the Equine Research Centre Scone. All members of the public were invited to attend. The day was organised and run by Key Insights Pty Ltd as part of the Community Survey and feedback. Key Insights advertised the Open Day via direct mail outs to local residents and businesses, through advertisements and articles in local and regional newspapers (see below) and by placing posters and brochures in post offices, libraries, council offices and Council Website, shops and public places in Scone.



**Kyoto Energy Park
Community Information Day**

As part of the community consultation process Key Insights Pty Ltd is facilitating a Kyoto Energy Park Community Information Day, providing an excellent opportunity for the community to make an informed opinion about the proposed Pamada Pty Ltd development.

Join us for a sausage sizzle, browse information, speak to a consultant and give us your feedback.

Saturday 16th February
10am-3pm
Equine Research Centre,
Bunnan Road, Scone.

Kyoto energypark
Helping make Scone green and clean.
A proposal to create energy from renewable, clean resources.

pamada
23 years creating special places

Key Insights Pty Ltd

Copy of advertisement placed in local and regional newspapers.

Key Insights estimated that 150 people attended the Information day. Pamada exhibited display boards containing information about the proposed project, plans, details of the environmental impact assessment process, renewable energy and wind turbines and local issues. Key project consultants attended the day (see table below) to answer questions from those attending and to gauge direct feedback from the community for inclusion in individual assessments. Pamada also exhibited display boards of photomontages, basic information and findings from consultants to date, visual simulations and presentations and a Suzlon Wind Turbine simulation video illustrating how the wind turbines function.

The aim of the information session was to provide an opportunity for the local and regional community to gain up to date information about the project and status and to provide feedback directly to the consultants. Key insights registered those people attending and made available a feedback form. People attending the information session were encouraged to complete the feedback form, to document their comments and/or concerns about both the project and the information session. Key Insights received a total of 56 feedback forms. The Project Director, Project Manager and Community Liaison officer attended and were available to respond to questions raised. Core consultants were also present to display current findings, collate community feedback and answer questions on general concerns.

In general, those who completed the feedback form seemed happy with the format and content of the information session, but raised a variety of concerns and issues. Most people were in favour of renewable energy but were concerned with it in their locality. These issues are discussed in full in the report prepared by Key Insights entitled Community Information Day Report.

Project team present at the Community Information Day include:

Company	Representatives	Environmental Category
HDB Town Planning	Kerry Nichols Jackie Arnold	Town Planning
Wilkinson Murray	Neil Gross	Noise
Integral Visual Landscape and Planning Conacher Environmental Group	John Van Pelt Phillip Conacher	Visual Planning Ecological Bushfire Risk
Key Insights Pty Ltd	Ellen Davis-Meehan Josh Flack	Socio Economic and Feedback Survey
Pamada Pty Ltd	Mark Sydney Mark Dixon Jacquie Ryan	Proponent
Middlebrook Station	Allan Henderson	Landowner



A photo taken of the Community Information Day held at the Scone Equine Research Centre 16 February 2008

Project Website

Pamada launched the Kyoto Energy Park project website www.kyotoenergypark.com.au in October 2007. The website contains the following information:

- About the Energy Park
- The Technology
- Planning & Approval Process
- The Energy Park and the Community
- Moobi Foundation
- Buying Green Energy
- Frequently Asked Questions (FAQs)
- Media & Links
- Investors
- Contact Us

Pamada has updated the website as the project has progressed. The website is intended to operate during various phases of the project to allow for distribution of newsletters, project information and various contacts.

Subject to planning approval the website shall be used as a communication platform to be updated as required during further stages of the project.

Meetings with Local Residents

Representatives of Pamada held meetings with direct neighbours and local residents in the vicinity of the proposed Energy Park. Meetings were held on a one to one or small group basis either at the Scone Office or at the householder's place of residence. Some of the meetings involved site visits with residents to gauge the visual impact of the proposal on the residence.

Many of the questions which residents asked were not able to be answered such as noise emissions and visibility of turbines from their household, however minutes of these meetings were recorded and responded to via letters or email. Any specific issues were considered and addressed during preparation of the EA by Pamada. Pamada held follow up meetings with direct neighbours on numerous occasions to discuss the result of the environmental studies and address specific concerns raised by these residents.

Subject to approval a 'Nearest Neighbours Plan' would be developed for efficient consultation and resolution of ongoing local issues with nearest residencies.

Community Feedback

Overall community feedback has indicated mixed support for the proposed Energy Park. Principal concerns from surrounding land holders relate to potential noise, visual and property value impacts. The community has raised relevant points in relation to specific environmental aspects. Pamada has addressed each aspect in this EA. Key Insights were engaged by Pamada to undertake a Community Awareness and Feedback study to further identify issues of concern. These issues are contained within this report and the Key Insights report.

Consultation with the Local Aboriginal Community

Myall Coast Archaeological Services completed the cultural heritage assessment for this EA on behalf of Pamada. Myall Coast Archaeological Services contacted the Department of Environment and Conservation (DECC) to identify Aboriginal Communities with a cultural and legal interest in the Scone area.

During the initial stages of the project Pamada and Myall Coast Archaeological Services consulted with Indigenous members and groups as described below:

- Pamada held an initial presentation at the Wanaruh Land Council Office in Muswellbrook and two on-site meetings with various Aboriginal members and groups in July/August to discuss the proposed project and to receive initial input on the project and appropriate consultation mechanisms.
- Representatives from Wanaruah Local Aboriginal Land Council and other indigenous groups participated in separate archaeological surveys of the proposed Energy Park site with Myall Archaeological consultants and Pamada representatives.

Details of the indigenous consultation process, evaluation and outcomes are contained within a separate report by Myall Archaeological Services Pty Ltd.

Prioritisation of Issues

As part of the consultation process, Pamada collated and prioritised the issues raised by Government authorities, the community and other stakeholders. Each issue identified was classified as of high, medium or low significance. Pamada used the prioritization to assign the level of environmental assessment completed for this EA, with the highest level of assessment on the high priority issues. This section describes the methodology used to identify issues and the results of the prioritization

Issues Identified

Pamada used the following sources of information to identify potential issues:

- Results of consultation with the Department of Planning and other government agencies and service providers. Consultation with Government Agencies identified in the DGRs have also been made directly with individual consultants undertaking environmental studies.
- Results of consultation with the community and nearest neighbours, site visits and local knowledge
- Issues covered in other EA documents for similar projects
- The Upper Hunter Shire Council, Local Environmental Plan and Land Use Strategy
- Two flyers were distributed by the Upper Hunter Landscape Guardians to the residents via a letter box drop. A copy of the two flyers (January 2008 and November 2008) is attached as Appendix G. The issues put forward by the Landscape Guardians are broad, however many of the issues have been presented and consulted with the community in previous meetings, discussions and provision of information on renewable energy and realistic impacts associated with these technologies. Further information will be provided in future consultation to community members.

Pamada has prioritized issues based on the Director General's requirements (including other integrated agency requirements), concerns raised by the community and the likely significance of potential impacts on the environment.

Pamada automatically assigned all issues raised as concerns by the community or identified as having a high potential impact on the environment as a high priority. Pamada then considered the potential

environmental impact of all other issues identified and assigned a high or medium or low priority accordingly.

Issues Prioritization

Environmental Issue	Community Concerns
Noise	High
Visual Impact	High
Flora and fauna	High
Cultural heritage	Medium
Social and Economic Issues (including property and land use impacts)	High
Traffic and transportation	Medium
Electromagnetic interference (including telecommunications interference)	Medium
Drainage and water quality	Low
Soils and geology	Low
Air quality	Low
Greenhouse gas emissions	Low
Grid Connection	Medium
Impacts from Construction	Medium
Hazard, risk and safety	Low
Property and land use impacts	Low
Waste	Low
Cumulative impacts	Low

A summary of the highest priority issues are discussed as follows:

Noise

Concerns were expressed from local residents during meetings, Community Information day and in the media regarding noise from turbines especially during normal days. Most of the residents wanted to know the noise level at their residence as a result of the turbines and whether the background would be exceeded. This was the most common question to Wilkinson Murray at the Community Information Day. A lot of the community had preconceptions regarding turbine noise saying that it was a persistent noise and described it as *'a train that never stops'*. A lot of residents commented that they had come to the valley for *'peace and quite'* that was *'intrinsic to the location'* and a prime reason for their living there. They were concerned with the affect from the turbines on this amenity.

Visual Impact on Landscape amenity

Many objections to the wind farm component of the proposal raised during the EA process were related to the visual prominence of the turbines on the local landscape. Several of the property owners expressed there appreciation of the unique landscape and features associated with the rock formations and valleys and rural properties. A lot of concerns were raised in regards to the commercial or industrial type nature of the machines which *'destroy the landscape and unique scenic quality of the area'*.

Others commented that quality of life would diminish. It was found that generally comments were related to perception of turbines as *'industrial machinery'* and commented that they didn't want another industry in the region. Some people were supportive of the technology and described the turbines as *'clean and graceful'*. In feedback from the community meeting most people were supportive of renewables and wind energy but some believed they would destroy the landscape amenity and saying they should be located closer to the mines.

Property Devaluation

Impacts upon both existing and future subdivision potential was identified in the DGs requirements. Property devaluation was an issue of great concern to local community members. In particular this is a matter of concern to those local property owners immediately adjacent to the properties that are proposed as locations for the wind farm turbines. Some residents suggested that their property may see a 30-50% reduction in land value, based on evidence from other wind farms. Many of the property owners had heard that property for sale near existing wind farms had been devalued based on their proximity to, and views of the turbines. Other owners commented that they require compensation for loss from the developer similar to what occurred in the mines.

Some owners west of Middlebrook Station were concerned with the views from their residence towards the mountain and were adamant that the view would be poisoned by the construction of the turbines. Other comments from residents in the media suggested that based on real evidence property values had increased in other wind farm locations and community attitudes towards wind turbines in the locality were highly favourable. A lot of anti-coal sentiment was also received with people saying that it was better than another polluting mine and that the landscape was protected not destroyed by the inclusion of the turbines.

Other concerns

Other concerns and comments picked up from direct logs, media and discussions included:

- Wind power cannot provide a base load power and is an uneconomical power generator or a 'white elephant' development;
- Not enough wind in the area and the whole development is a farce;
- Concerns were raised at the Community Information day over impacts on the Wedge tail eagles in the area from the turbines;
- Impacts on the Powerful Owl which had been seen on Middlebrook Station;
- Whether rock blasting would occur on the site and effects on house foundations;
- Concerns that bigger transmission lines would look ugly;
- Concerns over the lattice tower type transmission line structures similar to those coming from the mines;
- Impacts on dust from the site access road to Middlebrook Station currently used by quarries. A resident was worried by the additional dust and noise generated along the Middlebrook site access point;
- Concerns over vibrations generated by the turbine generators on nearby residencies;
- Allegations that wind test results should be public information and that results were poor for the site;
- Affects of Electro Magnetic Fields generated by the larger wires on elderly people particularly on pacemakers as a lot of elderly people were living in the area

Ongoing Consultation and Communication

Pamada will put in place an ongoing consultation and communication program to consult and provide information during the public exhibition phase, construction phase and operation phase of the proposed Energy Park. Communication would be continued with direct neighbors, local residents, special interest groups and the broader community to deliver on any commitments made during the EA phase. This would include provision of information on any monitoring and level of compliance or any changes to the project.

The community will continue to have access to the Pamada enquiry line, e-mail and the website. A program of activities would be developed for these stages of the project, once Pamada has reached financial close.

During construction it is proposed to set up a 'Nearest Neighbours' program as a supplement to the Construction Environmental Management Plan (CEMP) to ensure direct contact with senior project staff

and contractors for effective resolution of local concerns for closely affected neighbours identified in the EA.

Subject to approval Pamada proposes to facilitate a Mt Moobi Foundation Charter managed by 6 non-politically aligned representative of the community to allow for seed funding of community and education programs.

Conclusion

During the initial phases of the project community residents, business groups and other key stakeholders were actively engaged in the project using presentations, media, local council, general meetings, newsletters and internet. This generated feedback from the community through emails, telephone conversations, letters, meetings and media coverage. All responses were logged and used in the final preparation of the report. In February Pamada organised a Community Information Day to supply progress information regarding the project to the community and to discuss and gauge community attitude to the project in general. Key Insights Pty Ltd were used to independently facilitate the meeting and prepare a Community Attitude Report based on the feedback that was given at the meeting. Core consultants were present on the day to discuss environmental findings with concerned residents and also to get direct feedback on possible further investigation work that was required. Further environmental work was undertaken by consultants as a result of direct feedback from community present at the meeting and general concerns expressed at the day. Some of the minor consultants that were not present were given feedback and additional work based on comments received by individual concerns during the meeting.

Pamada has completed a thorough and wide-ranging consultation to complete this EA. The extent of consultation reflects Pamada's commitment to interact in a positive manner with all stakeholders to this project. Pamada have used the results of this consultation to prioritise issues addressed in this EA. Issues identified by the community have been assigned a priority rating to be addressed in the assessment process and final outcomes of the project layout and design.

Pamada will put in place an ongoing consultation and communication program to consult and provide information during the public exhibition phase, construction phase and operation phase of the proposed energy park.

References

- Auswind National Assessment Framework Wind Farms and Landscape Values June 2007
- NSW Wind Energy draft Environmental Impact Assessment Guidelines 2002

Report prepared by:

Jacquie Ryan
Community Liason Officer
Pamada Pty Ltd
Level 16
18 College St
Sydney

Mark Dixon
Project Manager
Pamada Pty Ltd

Upper Hunter Council Media Release

Appendix 'A'



UPPER HUNTER SHIRE COUNCIL

MEDIA RELEASE

Eco Generating LEP approved

The Upper Hunter Shire Council has received confirmation that a proposed amendment to the Scone Local Environmental Plan (LEP) has finally been approved. Council's Mayor Barry Rose stated that "the approval by the Minister for Planning will allow Council to consider development applications for alternate forms of energy generating activities such as wind farms, which under the previous LEP provisions were prohibited in certain zones. There have been a number of wind monitoring towers in place around Scone for a number of years and the results suggest that the conditions lend themselves to a wind farm style development, subject to the appropriate assessments being undertaken"

Council is aware of a potential application being lodged in the near future and the amendment clears the way for consideration under the terms of the amended LEP.

Cr Rose said that the news that the amendment to the Scone LEP has been finally gazetted is welcomed and Council looks forward to working closely with any proponents of such developments and the local community regarding any future applications.

**B D ROSE
MAYOR**

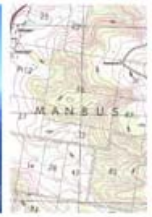
21 December, 2006

Enquiries to: Daryl Dutton, General Manager
Telephone: (02) 65 401 126

Fax: (02) 65 452 671

Minutes of Planning Focus Meeting

Appendix ‘B’



Planning Focus Meeting

Held at Upper Hunter Shire Council, Liverpool Street, Scone

31 January 2007, from 10.30am to 3.35pm

Attended

NSW Department of Planning (Infrastructure)	Neville Osborne
NSW Department of Planning (Infrastructure)	Mark Turner
NSW Department of Environment and Conservation	Mitchell Bennett
Hunter-Central Rivers Catchment Management Authority	Steve Ecels
Upper Hunter Shire Council	David Casson
Upper Hunter Shire Council	Paul Smith
NSW Department of Primary Industries	Cameron Ricketts
NSW Department of Primary Industries	Julie Edman
BBC Consulting Planners	Julie Horder
Pamada Pty Limited (the Proponent)	Mark Sydney
Pamada Pty Limited (the Proponent)	Jacquie Ryan
Middlebrook Scone Pty Limited (Landowner)	Allan Henderson

Apologies

BBC Consulting Planners	Bob Chambers
NSW Department of Planning (Hunter)	Amy Blakely
NSW Department of Natural Resources	Anthony Bryson
NSW Rural Fire Service	Doug Stevens

Distribution, in addition to the above

Upper Hunter Shire Council	Darryl Dutton
Minutes prepared by	Jacquie Ryan Ph 6545 9555
Minutes checked by	Mark Sydney Ph 9969 3608

Two Project Applications

The Meeting acknowledged that there are two applications and that the Planning Focus Meeting would deal with both applications.

Minutes

Discussion Item	Issues Arising	Comment / Action
Preamble	•	•
	•	•
	•	•
Site Tour – Mountain Station	•	•
	•	•
	•	•
Site Tour – Middlebrook Station	•	•
	•	•
	•	•
Departmental Requirements	• Department of Primary Industries	• Julie Edman (Coal Industry)
	• Proponent advised that DPI has authorization over Mountain Station for Mining Exploration	• No drilling has been performed to date on either site. The site visit showed no further action required for coal potential
	• Department of Primary Industries	• Cameron Ricketts (Fish, Forestry, Agricultural, Minerals)
	• Proponent to address potential resources for minerals on both sites	• Refer to published document by Upper Hunter Shire Council
	• Managers & Visitors Residence	• Approval for domestic purposes only, can not reflect an agricultural interest
	• No issues arising from Forestry Department	• Nothing to address
	• Fisheries	• Construction of the Energy Park must not have an effect on Waterways
	• Hunter-Central Rivers Catchment Management Authority	• Steve Eceles

	<ul style="list-style-type: none"> Proponent to address the following in the Environmental Assessment 	<ul style="list-style-type: none"> Sediment control plan, rehabilitation, regional corridor, native vegetation Act 2003, Rivers & Foreshaw's, Temporary Dams, Drilling, Roads Disturbance
	<ul style="list-style-type: none"> Upper Hunter Shire Council 	<ul style="list-style-type: none"> Paul Smith & David Casson
	<ul style="list-style-type: none"> Proponent to address the following in the Environmental Assessment 	<ul style="list-style-type: none"> Roads access, erosion, visual impact, no change to land usage
	<ul style="list-style-type: none"> Department of Environment and Conservation 	<ul style="list-style-type: none"> Mitchell Bennett
	<ul style="list-style-type: none"> EPA license required 	<ul style="list-style-type: none"> Separate license for construction and operation
	<ul style="list-style-type: none"> Proponent to address the following in the Environmental Assessment 	<ul style="list-style-type: none"> Dust suppression, waste disposal, Aboriginal Cultural heritage, harm to specific species in surrounding area
	<ul style="list-style-type: none"> Acoustic evaluation 	<ul style="list-style-type: none"> Operation Noise, must comply with South Australian Wind Farm Guidelines and New South Wales Industrial noise policy
	<ul style="list-style-type: none"> Department of Planning (Infrastructure) 	<ul style="list-style-type: none"> Neville Osborne & Mark Turner
	<ul style="list-style-type: none"> Proponent to address the following in the Environmental Assessment 	<ul style="list-style-type: none"> Visual, Flora & Fauna, Property Values, Telecommunications (Television reception, two-way communication, repeater stations) Water Sources, rivers and streams, noise modeling, Statement of Commitment
The key Environmental Issues	<ul style="list-style-type: none"> Community Visual Flora and Fauna Electromagnetic Archaeological Grid Upgrade Climate Control 	<ul style="list-style-type: none"> Geotechnical Acoustic Transport Flicker Aviation Bushfire
Next Steps	<ul style="list-style-type: none"> 	<ul style="list-style-type: none">

The Meeting closed at 3:35pm

Community letter and Information Updates

Appendix ‘C’

11 January 2007

Kyoto Energy Park - An Overview as at January 2007

A green and renewable way forward for Scone

Basic Facts

"The Kyoto Energy Park could provide Scone with the opportunity to lead the way in the use of renewable energy."

- A Preliminary Assessment Report for a Project Application to the NSW Department of Planning has been submitted by Pamada Pty Limited. The report is part of the long process that is underway to make the Kyoto Energy Park a reality. Further reports and assessments will be produced and submitted later in the year. The current application is just another step in the long process.
- Due to a small planning technicality, the overall Energy Park approval process has needed to be split into 2 applications. The first part is for the Wind turbines, the second part will be for the balance of devices and will hopefully be submitted in the short term.
- The location of the project is at two sites, approximately 13km west of Scone, on holdings known as Middlebrook Station and Mountain Station.
- The NSW Sustainable Energy and Development Authority (SEDA), identified the site in 1995 as one of eleven sites in NSW for further investigation as being suitable for the generation of electricity from wind. Wind monitoring wind commenced shortly thereafter.
- The proposed eco-generating infrastructure to be included in the Energy Park *could* include:
 - Wind Turbine Generators;
 - Solar Panel generators (Photo-voltaics);
 - A Solar-Thermal Array (Mirrors);
 - Mini closed loop hydro-electric facility;
 - Energy Park Visitor and Education Centre;
 - Manager's residence;
 - Upgrade of local electricity network; and
 - Ancillary equipment, tanks facilities, roads.
- The report identifies a likely maximum of 47 Wind Generating Turbines over the two sites.
- The project will use on-site water capturing and recycling techniques.
- The Department of Planning has made the initial report available to the public via its website.

Green Energy- providing a balance

"Coal will continue to play an important and vital role in supporting both the economy and the community across Australia and in particular, the Hunter Valley, whilst providing the major base load for our energy needs. The proposed Kyoto Energy Park seeks to balance that reliance, not replace it."

- Based on current technologies, it is proposed that the Kyoto Energy Park could generate up to 200MWh of electricity in clean and renewable energy.

A Commitment to the Scone Community

"The project could mean that when people in Scone switch on their lights, they will be using clean and renewable power"

- It is a priority for the project that progress is made through close participation with the Scone community. It will involve an extensive process of community consultation.
- Pamada will be opening a local office in Kelly Street.
- An information website will be active within the next few weeks at www.kyotoenergypark.com

For Further Information
Mark Sydney, Project Director (02) 9969 3608 or (02) 6545 9555

pamada Pty Limited
ABN 60 003 909 073

3 / 166 Kelly Street
SCONE NSW 2337 Australia

(61 2) 6545 9555 Tel
(61 2) 9383 8321 Fax

www.pamada.com

7 February 2007

Landholder
Address
TOWN STATE PCODE

Dear Landholder *[Name inserted here I hope]*

KYOTO ENERGY PARK

We are writing to introduce you to the project named Kyoto Energy Park, our hope at creating electricity that is green, renewable and clean for the Scone area and its residents. The energy park is situated on land near your home, on two sites Middlebrook Station and Mountain Station.

In appreciation for your proximity to the site, we'd like to take this opportunity of providing you directly with some information about the project and invite you personally to contact us if you wish, so that, should you have questions and/or comments we may be able to answer them. In any case, just come and say hello!

The project is ambitious and will provide the Upper Hunter community with the ability to identify strongly with an energy industry that uses renewable sources and is clean.

We attach a brief information pamphlet that over time, we will update you with more recent news and information. It seeks to very briefly describe the principle elements of the project. Future updates we'll send out to you too.

Implementing the energy park is a long and rigorous process. We are in the very early stages, although it is well over 10 years ago that the NSW Government identified the location as a site with great potential for the creation of electricity from renewable sources. Hopefully we'll be able to answer all your questions.

We are very committed to communication and community participation. We recently have opened an office in Kelly Street and are very happy to meet with you or a small group should you require additional information. We'd be happy to come to you, or if more convenient, please come and see us. It is possible if you do come, we might be out, but please do call and we can make another time.

Over the next month we will write to residence and land holders in the immediate area, staggering our communication to allow us to meet people individually. We attach a small map identifying who we think may live / own around you. If you could help to identify anyone we may have inadvertently missed, by alerting us to this, or letting your neighbour know.

Please do not hesitate to contact Jacquie Ryan or Mark Sydney on 6545 9555 or call in and see us at Shop 3/166 Kelly Street, Scone in the Mare and Foal Mall should you have any queries.

Yours sincerely
pamada Pty Limited

Jacqueline Ryan
Community Project Manager

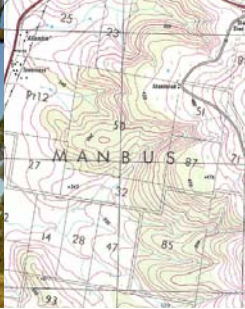
pamada Pty Limited
ABN 60 003 909 073

3/166 Kelly Street
SCONE NSW 2337 Australia

(61 2) 6545 9555 Tel
(61 2) 9383 8321 Fax

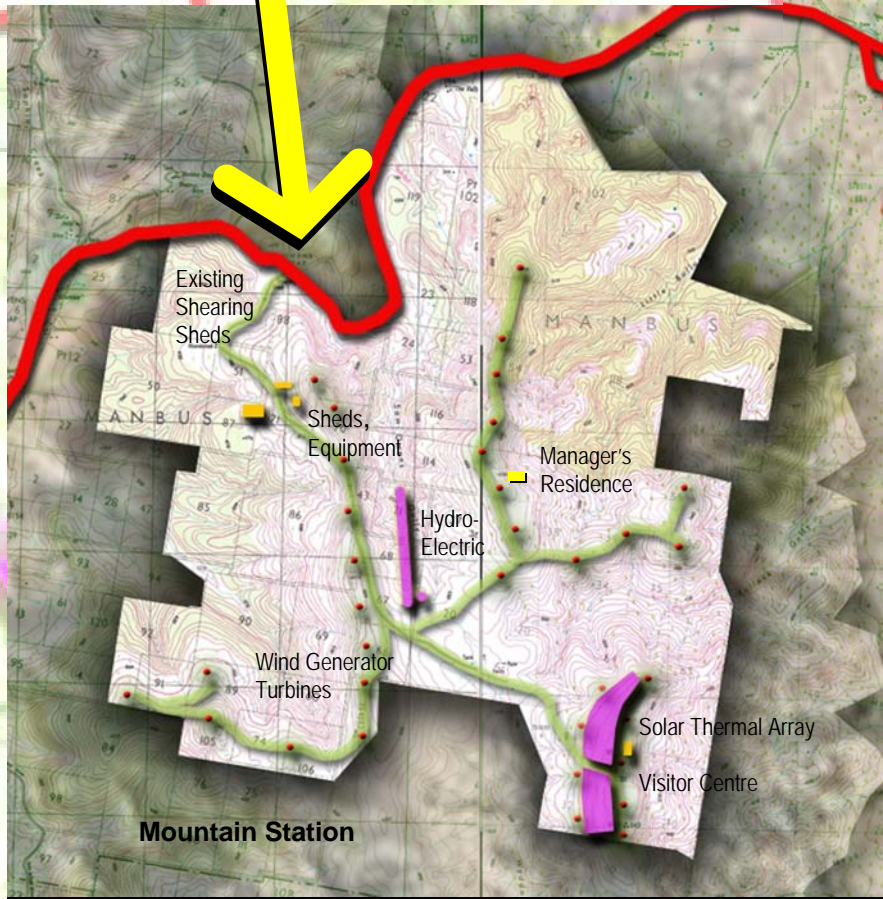
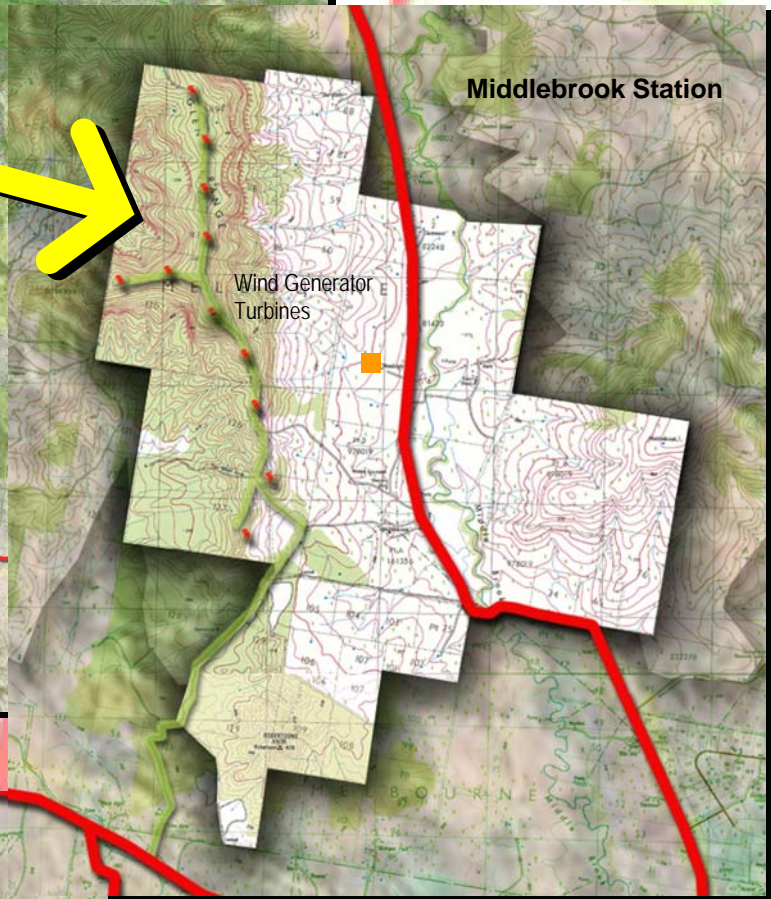
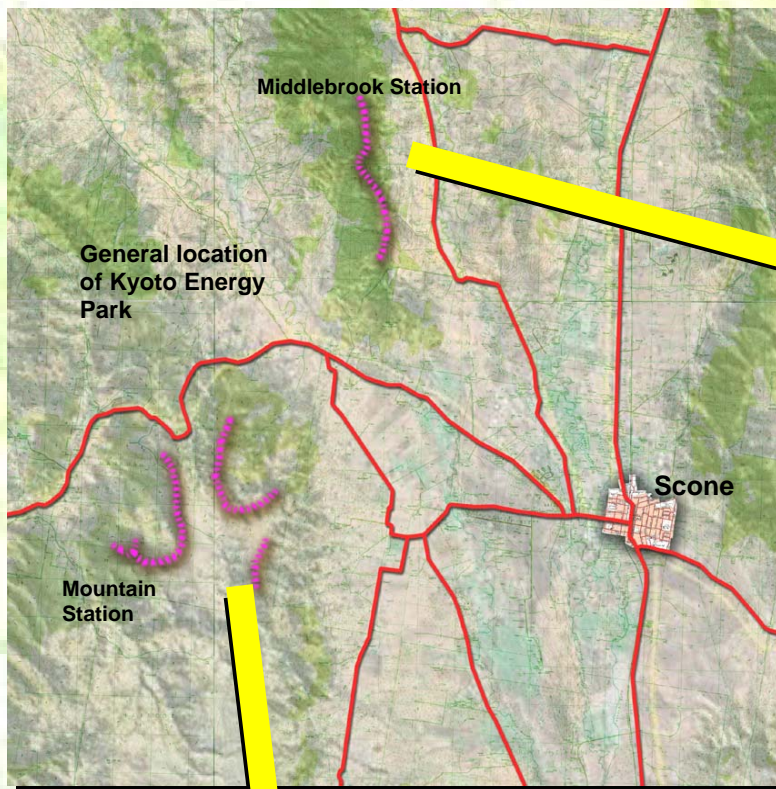
www.pamada.com

Kyoto Energy Park



January 2007, a snapshot.....

- An opportunity for Scone to have a source of green, clean and 100% renewable energy
- The proposal is for an Energy Park that hopes to create electricity from eco-generating devices such as:
 - Wind Turbines
 - Solar Panels
 - Solar Thermal Plant
 - Closed Loop Hydro-Electric
- An opportunity so that electricity can be created sustainably from wholly renewable sources
- A focused approach to participating with the community in the progression and operation of the Energy Park
- Recognition that the process to implementation is long and rigorous and that we are currently in the early phase.



The Kyoto Energy Park is an opportunity to provide Scone and its surrounding areas with renewable energy from clean sources, with benefits for the whole community.

The Kyoto Energy Park hopes to deliver up to 200MW of renewable, clean and green energy with anticipated breakup of:

- **Wind** 85-120MW
- **Solar-Thermal** 40-60MW
- **Other** 15-20MW

The Wind Farm component could comprise up to an estimated 47 turbines over the 2 landholdings, an average of 13km west of Scone.

Other Eco-generating devices proposed are:

- **Solar Cell Array**
- **Solar Thermal Plant**
- **Closed Loop Hydro-electric Plant**

**Kyoto Energy Park Company
c/o Pamada Pty Limited**

Level 16
14-24 College Street
Sydney NSW 2010 Australia

PO Box 1446
Darlinghurst NSW 2010

Tel 02-9969 3608
Fax 02-9383 8321

Att: Mark Sydney,
Director

Email: kyoto@pamada.com

**Kyoto Energy Park Company
c/o Pamada Pty Limited**

Suite 3
166 Kelly Street
Scone NSW 2760 Australia

PO Box 35
Scone NSW 2337

Tel 02-6545 9555
Fax 02-9383 8321

Att: Jacquie Ryan,
Project Manager

Email: kyoto@pamada.com

Opening Soon



Making Kyoto Energy Park a reality for Scone

The Kyoto Energy Park Company has chosen the Middlebrook and Mountain Station sites, located west of Scone as a viable option for bringing Renewable Energy alternatives to the Upper Hunter Region. The Kyoto Energy Park is proposing to deliver up to 200MW of renewable, clean and green energy to be fed directly into the local grid. The proposal will include up to 47 Wind Turbine Generators, a Solar-Thermal Plant, a Closed Loop Hydro Electric Plant, a substation, associated cabling for connection to the existing transmission network, maintenance facilities and a Visitor's Center.

The site is particularly attractive for renewable energy ventures from wind; solar and micro-hydro. The Australian Commonwealth Scientific and Research Organization (CSIRO) has been monitoring wind resources on the site for nearly 7 years, confirming the site as a viable wind resource.

Pamada Pty Ltd is a property advisory and development management company based in Sydney. Pamada (the principal consultant and applicant) is currently undergoing a comprehensive Environmental Assessment for the project on behalf of Kyoto Energy Park Company. The Environmental Assessment will include a detailed investigation and evaluation of the project and environmental matters and constraints associated with the proposal.



The location for the proposed Kyoto Energy Park; Mountain Station & Middlebrook Station, Scone.

What are some of the benefits?

Wind and Solar power can have substantial benefits in saving the earth's natural resources such as water, air and land. Renewable energy projects also have large-scale benefits for the landholder, the local and regional economy, energy generators and retailers, and assists our Government in meeting Greenhouse Gas emissions. Kyoto Energy Park would make a significant contribution to reducing Australia's greenhouse gas emissions by reducing the need for coal generated electricity.

The Approval Process

The formal planning and approval process for the Kyoto Energy Park began last year. A Planning Focus Meeting was organised on-site with representatives from Government Departments, Authorities, Council and the Kyoto Energy Park Company in attendance.

Following the Planning Focus Meeting the Department of Planning issued pamada with detailed requirements for the preparation of an Environmental Assessment report as mentioned above. These are known as the Director General's Requirements.

Specialist studies in the areas of Noise, Flora and Fauna, European and Indigenous Heritage, Visual Impact and Planning are currently underway and progressing.

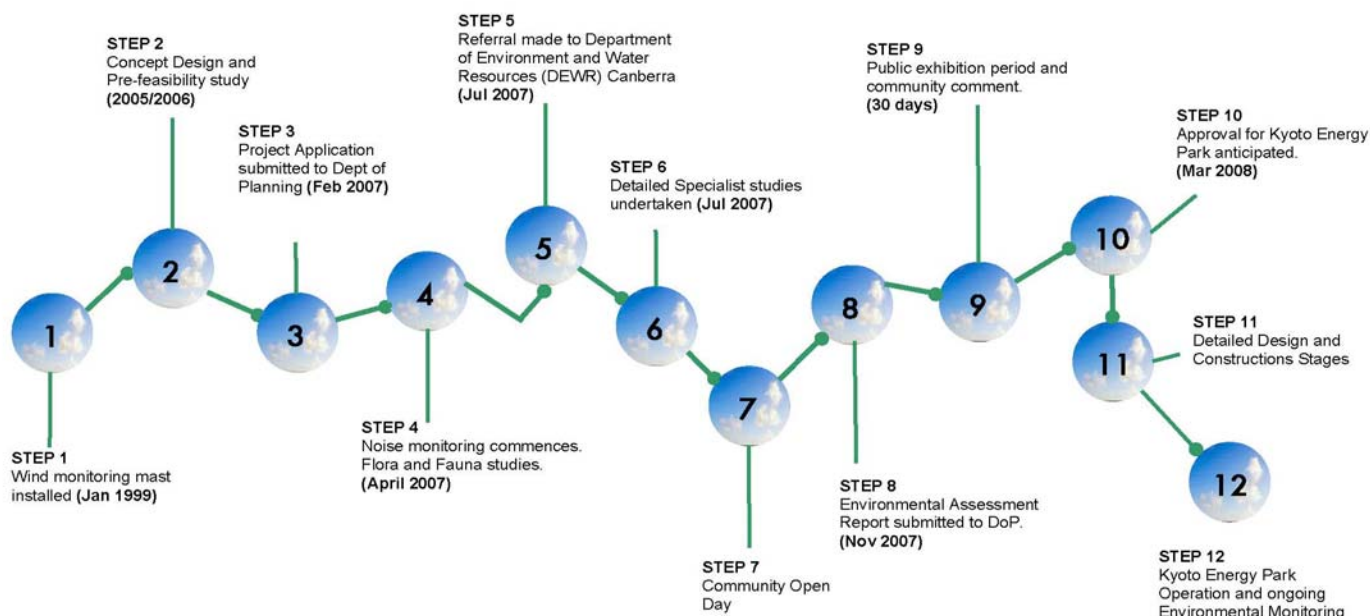
Community consultation will continue throughout the assessment phase. Those wishing to comment on the project are invited to contact pamada directly (see over for contact details). A Community Open Day will be held during the final stages in the preparation of the Environmental Assessment Report. Details of the Open Day will be advertised in local Newspapers and hosted on the website.

Following submission of the Environmental Assessment report to the Dept of Planning a public exhibition period of 30 days will allow residents to formally comment on the proposal.

Community Feedback

Comments and feedback on the proposed Energy Park from calls to our public enquiry line, emails and meetings with landowners and interested parties have indicated general support for the Energy Park. Some local residents have noted that the proposed Energy Park may create positive economic benefits and tourism while some have expressed concern over environmental impacts such as noise and visual issues.

All comments, issues and concerns raised to date are being considered as part of the Environmental Assessment process and will be documented in the final report submitted to the NSW Department of Planning later in the year.



KYOTO ENERGY PARK SCONE

Where can I find out more?

If you would like further information about the proposed Kyoto Energy Park please contact the following:



Call Jacquie Henderson on the public enquiry line (02) 6545 9555



Visit the **website** on www.kyotoenergypark.com.au (coming soon)



Send an **email** to info@pamada.com



Send a **fax** to (02) 8705 3078



Mail a **letter** to Kyoto Energy Park PO Box 33, SCONE NSW 2337



Visit the office at Suite 3, 166 Kelly Street, Scone NSW 2337 Australia



Facts and Figures

The Kyoto Energy Park is an opportunity to provide Scone and its surrounding areas with renewable energy from clean sources, with benefits for the whole community.

The Kyoto Energy Park proposes to deliver up to 200MW of renewable, clean and green energy with anticipated breakup of:

▪ 47 x Wind Turbines	85-120MW
▪ Solar-Thermal Plant	40-60MW
▪ Closed-loop Hydro Plant & Other	15-20MW

No. of households served with green energy 90,000

Construction jobs created 2,500

Long term jobs created 15

Estimated No of Visitors to Scone per year as a result of a special visit to the Energy Park and Visitor Centre 5000-10000

(Annual) CO₂ offset 800,000 t

Approximate volume of land not needing to be mined for coal each year: 35 x 10⁶ (m³)



Making scone's energy clean and green

Renewable Energy – a global perspective

The renewable energy sector has grown rapidly in the past decade with global investment in renewable technology, manufacturing and commissioning of power plants. The US is currently the fastest growing wind and solar energy market in the world, however European countries such as Spain, Denmark and Germany have already substantial wind and solar resources. As an example Denmark currently sources 20% of its total energy from wind, Spain 11% and Germany 6%.

Australia has some of the best renewable resources in the world by comparison, yet less than 1% of Australia's energy comes from wind and solar. Australia currently has 42 wind farms operating at a total generating capacity of 820 MW. Most of these farms are located in the southern states of Victoria, South Australia and also Western Australia where wind speeds are characteristically stronger. Australia's first wind farm was built in the early 1980's at Esperance in Western Australia and still continues to generate free, clean and reliable energy.

The Kyoto Energy Park will have significant benefits to the environment in reducing Greenhouse Gas Emissions in accordance with State and Federal Renewable Energy Targets. The Park will also have a considerable benefit in diversifying and strengthening the local and regional economy by:

- ☞ providing the Hunter with a clean, green and safe electricity supply
- ☞ opportunities for the local manufacturing industry and regional development
- ☞ creating short and long term employment opportunities and developing new skills
- ☞ developing green tourism potential in the area
- ☞ strengthening the local electricity network increasing reliability, capacity and security for all users.
- ☞ reducing transmission losses through the use of embedded generation technologies
- ☞ assist in establishing renewable energy projects *within New South Wales and the Hunter*

Environmental Assessment process

Pamada Pty Ltd is seeking approval for the construction of the Kyoto Energy Park, Scone. The proposed Energy Park comprises up to 47 Wind Turbine Generators, a solar field and a closed-loop hydro plant being installed at Mountain and Middlebrook Station approximately 12 km west of Scone. The proposal also includes associated works such as roads, maintenance facilities, a manager's residence, electrical substation, cabling and upgrading of external line reticulation network. Detailed environmental studies have been progressing since early 2007 and are nearing completion. Recommendations from these studies will be collated and summarised into a main report for submission to the NSW Department of Planning in early 2008. The basis of the overall assessment framework will include:

- ☞ Statutory Planning framework and considerations
- ☞ Strategic Justification of the project
- ☞ Flora & Fauna investigations
- ☞ Noise assessment
- ☞ Social and Economic Impacts/Benefits of the Park
- ☞ Assessment of any possible Blade Flicker and Glint
- ☞ Visual and Landscape Assessment
- ☞ Transport and Traffic Impacts and Management
- ☞ Bushfire Risk Management
- ☞ Electro Magnetic Interference from turbines
- ☞ Compliance with Aviation requirements in locality
- ☞ Indigenous Heritage Impact Study
- ☞ European Heritage Impact Assessment
- ☞ Geotechnical and Resource Issues
- ☞ Surface water and Hydrology Impact and Mitigation
- ☞ Options for Electrical Connection and line routes

Community Information Day

Residents, organisations, businesses and interested people are invited to attend an Information Day to be held at the **Equine Research Centre at Scone**. There will be an opportunity on the day to speak to senior consultants on a one-to-one basis, gain information and offer feedback about the proposal.

Where: Equine Research Centre
Satur (off Bunnan Road)
When: Saturday 16th February 2008
Time: 10.00am – 2.00pm.

Sausage sizzle and light refreshments will be offered. Proceeds from the sizzle will go to the Scone Lions Club.

Your say.....







Following submission of the environmental assessment, the Department of Planning will review the document and when satisfied that all relevant issues have been adequately addressed will seek comments from government authorities and the community at large. Further details of the planning assessment process can be found on the NSW Department of Planning website at www.planning.nsw.gov.au (Major project assessment)

Kyoto Energy Park Socio-Economic Study

Pamada have engaged **Key Insights Pty Ltd Newcastle** to complete an independent Social and Economic Study on the Kyoto Energy Park. Key Insights will conduct an analysis of socio-economic impacts and benefits contributing to the local and regional economy from the Kyoto Park proposal. Key insights will be consulting extensively with stakeholders, resident/progress associations, tourism organisations, community and business representatives. All comments and conclusions raised during the evaluation will be formalised in a report and included in the final submission to the Department of Planning.

Kyoto Energy Park Website

The website was launched in October 2007 and following this has received a lot of interest, with nearly 2000 hits already. General information on the Energy Park can be accessed from the website including the Technology, the Planning and Approval Process, the Energy Park and the Community, Frequently Asked Questions (FAQs) and using Greenpower. For more detailed technical information there are some very good links to websites in the 'Media and Links' section. If anyone has any more queries specific to the proposal please contact us on the links below.

-  Call the public enquiry line (02) 6545 9555 (Mon-Fri 9am to 5pm)
-  Send an email to info@pamada.com
-  Send a fax to (02) 8323 4611
-  Mail a letter to Kyoto Energy Park PO Box 33, SCONE NSW 2337
-  Visit the office at Suite 3, 166 Kelly Street, Scone NSW 2337 Australia
(Please note this is a part-time office, please call to organise a time to meet)
-  Visit the website on www.kyotoenergypark.com.au

Australia **FINALLY** signs the Kyoto Protocol !!!

The Kyoto Protocol is an international framework to reduce greenhouse gas emissions. It sets targets for industrialised countries to reduce pollution and establishes an international emissions trading scheme.

In early December the newly appointed Prime Minister Kevin Rudd went to Bali for talks with world leaders in regard to reducing global emissions.

Australia ended a 10 year exile in finally signing the Kyoto Protocol, committing Australia to reducing greenhouse gas emissions by 60% on 2000 levels by 2050, and becoming a more environmentally responsible participant in the global economy.

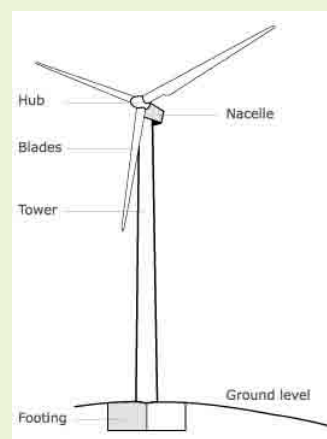
Facts and Figures

Wind Monitoring

The CSIRO have been monitoring wind resources on the site since the first wind mast was installed on Mountain Station in late 1999. A second and higher wind mast (65m) was erected in 2006 on Mountain Station to correlate existing data and record wind shear characteristics for noise modelling, detailed turbine siting and layout. Monitoring has also confirmed the wind resource on the site to be viable and efficient energy resource.

Typical Wind Turbine Specifications

Height:	up to 105 m hub height
Rotor Diameter:	45-50m
Colour:	off white grey in non-reflective matt finish
Cut in wind speed:	4 m/s
Cut out wind speed:	25 m/s
Rated power:	2.1-3.0MW
Rotational speed:	15.1-18.2 rpm
Base diameter of tower:	4.0 m



Kyoto Presentation at Chamber of Commerce

Appendix ‘D’

Scone Chamber of Commerce & Industry invites you to attend a

Chamber of Commerce Member Dinner: Guest Speaker—Mark Sydney of the Kyoto Energy Park

- Please join us and take this opportunity to hear first hand about a very new concept for the Scone district.
- Learn what an energy park is—what it aims to do, where it will be and what you will find there.
- Hear plans for the creation of "clean, renewable energy" sufficient to power all the residences in the greater Hunter Valley

Wednesday 4th April

**Airlie House Motor Lodge,
New England Highway,
Scone**

5:30pm for 6:00pm

\$30 per head (members)

\$35 per non-member

**Cost includes a 2 course
meal, tea & coffee**

**The bar will be open for all
other beverages**



RSVP: Tuesday 3rd April

Fiona Graham, Chamber Secretary Ph: 6543 4453

Fiona_J_Graham@national.com.au

Or chamber@hunterlink.net.au

Please bring
along colleagues
& friends who are
interested.

Kyoto Energy Park Scone High School Project

Appendix 'E'

SCONE HIGH SCHOOL

"Helping young people create their futures"



Scone High School
Gundy Road
SCONE, NSW 2337

Mr Mark Sydney
Director
Pamada Pty Ltd
Level 16, 14-24
College Street
SYDNEY NSW 2010

Dear Kyoto Energy Park Project Staff

We would like to take this opportunity to thank you for all the help you have provided us with, in order to write our newspaper article for the Newcastle Herald competition. It will be printed on Thursday July 26th and we hope you enjoy reading the article.

We also wrote an editorial along the same theme and that was written by another member of our class.

Yours faithfully,

Scott Brugnatti
9 English 1
20th July 2007

Hannah Hunt

Addam McGowan

Daniel Wadwell

Ms Lindy Hunt
Principal
Scone High



PO Box 285 Scone NSW 2337

P: (02) 6545 1455 F: (02) 6545 3269

E: scone-h.school@det.nsw.edu.au

Powering the Future

By: Scott Brugnatti, Hannah Hunt, Addam McGowan and Daniel Wadwell

Residents of Scone are divided over the proposed \$200 million Kyoto Energy Park that includes several renewable energy alternatives for the Upper Hunter.

Mr Mark Sydney, Director of Pamada, the company behind the project, believes the eco-generating devices such as wind turbines, solar panels, a solar thermal plant and a closed loop-hydro-electric scheme can save natural resources and reduce fossil-fuels usage and associated pollution.

Local residents acknowledge the importance of renewable energy sources, however are concerned about the negative visual impact from the town.

Other associated concerns are light flicker, noise and the effect on native bird life.

Mountain and Middlebrook Stations, approximately 12 km west of Scone have been identified amongst the eleven suitable sites for the generation of electricity from wind, solar, geothermal and a closed loop hydro system by the Department of Energy, Utilities and Sustainability in 1995.

The proposal recommends a total of 47 turbines, with 12 turbines to be located at Middlebrook Station, and 35 at Mountain Station.

The wind turbines will be an estimated 150 metres tall, including the wings which are an estimated 50 metres in length.

Pamada are proposing to form the Mount Moobi Foundation to ensure a balanced and fair system for determination of eligible programmes for support.

The foundation would be chaired by 6 open-thinking, non-politically aligned individuals who will work with the community to support its programmes and support the message that Scone is a clean and green community.

"Wind and solar power can save our natural water, air, land, reduce pollution from fossil fuels and can avoid the burning of the equivalent 12,400 tonnes of coal per year", said Mr Sydney.

The energy park is expected to produce enough electricity to power the equivalent of 80,000 houses annually, and will be supplied to the existing power grids with an anticipated grid connection in late 2010.

During construction of the Park there will be approximately 2,500 jobs. It will provide 15 permanent care and maintenance positions during its time of operation.

The Park is currently undergoing a comprehensive environmental impact study; the next stage of the Kyoto Energy Park to be released soon.

Kyoto Park – a convenient truth

editorial

By: Ashley Jones and Kate Taylor

Scone is being offered a great opportunity with the Kyoto Energy Park and we must welcome it with open arms.

The Energy Park is the first of its kind in Australia to deliver renewable energy in such a variety of ways; an option being adopted by other forward thinking countries throughout the world.

Despite the development not being palatable to some landowners and it having some impact upon the immediate environment near its location; the park will assist the community to become environmentally friendly by using renewable energy sources.

Imagine the message to others that our local community could send when we are so often associated with the coal industry here in the Upper Hunter and yet could be seen as embracing these new technologies in energy delivery.

The significant benefits to be gained by this project include employment opportunities, increased tourism, and most importantly a positive reputation for our community as being forward thinking.

People have said that Scone is unique and this most definitely furthers that opinion.

We must move beyond the talk and actually be proactive, avoiding the "not in my backyard" approach. Many people wish to see renewable energy alternatives and the location may as well be here.

It has been a commonly held view that public opinion is swinging toward sustainable energy sources and our community could be a national leader whereby we acknowledge the current need for fossil fuels and their associated economic benefits for our region but are happy to instigate the delivery of alternative sources.

The energy park is not simply going to have wind turbines and solar panels producing electricity, but also a closed loop hydro-electric power supplier so Scone and the district's coal generated electricity could be reduced and effectively replaced with green power.

According to Pamada Pty Ltd, the company behind the initiative, just one wind turbine alone will create the energy currently used by Scone annually. This would lessen the output of CO2 emissions and other greenhouse gases, making for a much cleaner and environmentally friendly option.

Public concern over the wind turbines predominantly centres on the visual impact for such a large structure. As with many things visual, their appeal

varies. Some believe that the look of white fans, turning by the force of wind signifies an eco-friendly image; whilst others are concerned over "shadow flicker" and the harm to native bird flight-paths.

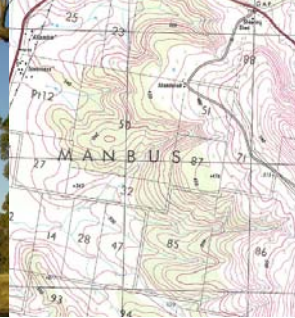
Minimising the impact and avoiding any detrimental damage would be paramount in the community's expectation for the approval of the project. These are no less than the expectations on coal associated activities.

This initiative seems to contrast greatly with the state budget that has increased funding for associated coal industries and the extension of mine holdings and openings. Surely we need greater research and development into clean coal technology and investment into sustainable energy sources.

The recent State Government Budget ensures global warming will continue by investing in coal-fuelled power stations. Until governments increase funds to invest in alternate/renewable energy the issue of Global Warming will dominate social and political discussions.

As Al Gore, the creator of 'An Inconvenient Truth', says "old habits + old technology = predictable consequences; but old habits + new technology = dramatically altered consequences."

Kyoto Energy Park



Kyoto Energy Park Scone

Answers to Questions for School Project – Scone High School.

14 June 2007

pamada pty limited
ABN 60 003 909 073



Level 16, 14-24
College Street
SYDNEY NSW 2010
AUSTRALIA



(612) 9969 3608 Tel
(612) 9383 8321 Fax

1. Introduction

Thankyou for your enquiry regarding the development of the Kyoto Energy Park at Scone. We are pleased to answer questions related to your School project and have endeavoured to be as comprehensive as possible. We are currently investigating some of the questions you referred to with the help from external consultants so we have answered what we can at this stage.

The project is for the Scone Community as a whole with the attempt to bring Renewable Energy Alternatives to the Scone and Upper Hunter Regions. The opportunity exists on 2 landholdings located approximately 12-14 kilometres west of the Scone Township. These technologies include:

- A Concentrated Solar-Thermal Plant (CSP)
- Wind Turbine Generators (WTGs)
- A Closed- Loop Hydro Electric Plant (CLHEP)
- Ancillary facilities
- A Visitors Centre and Managers Residence

As mentioned we are currently undergoing a comprehensive Environmental Study for the project to identify if any of the general impacts that you mentioned will be applicable to the Kyoto Energy Park Scone. We will have a website very soon that will answer some of these questions in a little more detail (www.kyotoenergypark.com.au)

1. Why was this site near Scone chosen?

In 1995, Sustainable Energy Development Authority (SEDA) now known as the Department of Energy, Utilities and Sustainability www.deus.nsw.gov.au identified Mountain Station as one of eleven sites in NSW highly suitable for the generation of electricity from wind. A wind monitoring tower was installed by the CSIRO on the site and has been logging wind conditions for 7 years, confirming that the location is practical and effective. Since then a further wind monitoring mast has been erected for more detailed wind yields such as shear analysis and weather reporting.

2. Is there an issue to adjacent residents in regard to detrimental health effects associated with living under high tension power lines?

High tension power lines generally refer to high voltage transmission lines (330kV) which are not required as part of the Kyoto Project. It is intended to use the existing power lines (lower voltage) where possible with minor upgrade works. Underground power lines will be used on site to prevent damage and improve amenity.

Any potential issues relate to effects of Electromagnetic fields will be addressed by pamada in an Environmental Assessment Report submitted to the Department of Planning. Generally health issues related to Overhead transmission lines are addressed by Commonwealth Government guidelines and will be addressed in the Kyoto Report as a requirement.

3. Where are the proposed towers to be located at?



The likely number of Wind Generator Turbines at the two sites would be up to 47 with the turbines ranging in size between 2MW and 4.5MW.

Middlebrook Station is likely to have a maximum of 12 turbines and Mountain Station is likely to have a maximum of 35 turbines. Possible total generation of energy from wind at the two sites would be in the range of 85MW – 120MW

4. How you will resolve the issues of light flicker and noise production?

Shadow Flicker is an event sometimes occurring at a short time interval at a certain time of the year and day, at a particular wind speed for the Wind Turbines. This is a relatively rare event, but can happen. It is possible to programme the wind turbines to mitigate the likelihood of shadow flicker if it found to occur, once the study has been completed.

The noise production within or around a wind farm can vary considerably depending on a number of factors including the layout of the wind farm, the topography or shape of the land and the speed and direction of the wind.

With acoustic equipment, we are currently testing existing background noise levels at a number of residences which are located in closest proximity to the sites.

Noise limits are set determined based on the potential to cause irritating noise levels above ambient or existing levels. This results in turbines being located far enough away from occupied houses to protect the ambience of the residence.

5. What does the Environmental Impact Statement note as the impact of the site on the local flora and fauna?

Pamada are currently in the process of preparing the Environmental Assessment which includes a detailed investigation of potential impacts on Flora and Fauna such as birds, bats and plants. While Renewable Energy Parks are good for the environment as a whole they have to be located in areas that will not cause any detrimental damage to the native flora and fauna. Key tasks include to be addressed in the study include:

- Identifying and considering any critical habitats, Populations or ecological communities listed under both State and Commonwealth legislation,
- impact on birds and bats from strikes,
- vegetation clearing during construction,
- identification of any regional corridors and
- an assessment of any impacts associated with the proposal on the Towarri National Park.

6. What are the environmental benefits for this type of energy production?

The proposal is for an Energy Park that hopes to create electricity from eco-generating devices such as: Wind Turbines, Solar Panels, Solar Thermal Plant, and Closed Loop Hydro-Electric.

Renewable sources are better for the environment than electricity generated from nonrenewable sources. Generating electricity by burning fuel (coal, natural gas, diesel, and biomass) affects air and water quality by creating emissions like carbon dioxide, sulfur dioxide and nitrogen oxides. These Greenhouse gases concentrate in the atmosphere and can then increase in pollution and global warming of our planet.

Wind and Solar power can save our natural resources such as water, air and land and reduce pollution from other fossil-fuel related activities. The Kyoto Energy Park at Scone can avoid the burning of the equivalent of 12,400 tons of coal per year. The Energy Park is expected to produce enough electricity to power the equivalent of 80,000 New South Wales homes each year. With just one wind turbine, the Energy Park will create a similar amount of power that is used annually in Scone.

7. What are the economical benefits for this energy park?

As part of the development process and as a commitment to the project, a Community Plan will be prepared with community leaders. The Community Plan will identify the company's commitment by way of seed funding and assistance with the raising of further funds to enable and support local good living and thriving enterprises.

To ensure a balanced and fair system for determination of eligible programmes for support, pamada proposes the formation of the Mount Moobi Foundation. The Mount Moobi Foundation is proposed to be chaired by 6 open-thinking, non-politically aligned individuals who will work with the community to support its programmes and support the message that Scone is a clean and green community.

8. How costly will the construction of the wind farm be?

Currently the developer is seeking approval for the project and the determination of capital costs for the works has not yet been clarified. Until we receive planning approval from the State Government we are yet to finalise the overall construction costs associated with the Energy Park. A rough estimate for the turbines alone based on 100MW or power is approximately 200 million dollars.

9. What employment opportunities are created by this project?

We anticipate 2,500 jobs will be created during construction and approximately 15 long term jobs for the life of the project. Employment at the site will be related to maintenance of the facilities, managers, and Visitors Centre. Other indirect employment will also result from tourism and visitors to the Energy Park.

10. How will locals be able to use this renewable energy source?

At this stage the Kyoto Energy Park Company hasn't signed a retail/commercial licence for the on sale of our electricity. We are hoping that we have an agreement with a supplier that will provide the local residents of Scone with Greenpower energy at no extra cost to the householder.

Scone residents however will be able to source 100% of their electricity from renewable resources generated near their town.

11. Are there similar sites around the world to the one earmarked for Scone?

Wind Farms are considered the most economically feasible renewable resource and consequently are very popular both in Europe, China, the US and also Australia.

Scone is a very unique site in the fact that not only is it a good wind site but also has great sunlight for solar energy production and rolling hills for the closed loop hydro supply. We aren't aware of other sites around the world that have strong resources for all three power generating devices.

For further information on Australian sites have a look at AUSWEA website at www.auswea.com.au

12. Is there a proposed date of construction of the energy park?

Subject to planning approval and the huge demand for the international supply of the Wind Turbines we anticipate construction will commence late 2009 or early 2010.

13. How long will construction take?

Construction of the energy park will take approximately 9-12 months which includes implementation of service roads and the construction of turbines and plants.

14. When will it actually be generating energy to go into the local power grid?

At this stage we anticipate grid connection to be late 2010.

15. What is the actual Kyoto energy park waiting on to begin this project?

A Preliminary Assessment Report for a Project Application to the NSW Department of Planning has been submitted by pamada on 13 February 2007. The report is part of the long process that is underway to make the Kyoto Energy Park a reality for Scone. Pamada are currently preparing an Environmental Assessment Report on behalf of the Kyoto Energy Park Company as part of the development project. During this assessment period pamada will consult with the Community and landholders of the area.

Construction will commence subject to planning approval from the Government and Departments. The commercial agreements including a contract to sell the electricity to a retailer and a construction contract will follow.

16. Is there somebody else we could contact to help us with our investigation?

NSW Government, Department of Planning www.planning.nsw.gov.au

Upper Hunter Shire Council www.upperhunter.nsw.gov.au

Department of Energy, Utilities and Sustainability www.deus.nsw.gov.au

Australian Wind Energy Association www.ausea.com.au

Upper Hunter Landscape Guardians

Letter Box Drops (Jan 2008 to Nov 2008)

Appendix 'F'

The big winners are wind industry owners and the landholder who leases his land.

Environmentalists everywhere are now recognizing that commercial wind development is often more harmful than it is beneficial.

The true cost of electricity from wind is much higher than wind advocates admit.



Wind monitoring towers have been erected on Scone Mountain by another proponent.

If the monitoring is successful it will open up an avenue for further wind farm development thus surrounding Scone with wind turbines.

Wind powers overall contribution is expected to further decrease over the next 30 years regardless of the explosion of industrial wind development.

**YOU CAN MAKE A DIFFERENCE
SAY "NO" TO WIND TURBINES**



Mountain Station — where 35 turbines are to be situated.

Upper Hunter Landscape Guardians Inc.

President: Carmelle Lymbery
6545 2760



**Upper Hunter
Landscape Guardians**



**Glen Ranges & Towarrri National Park behind the
Scone Race Club.**

**12 turbines up to 150m are being placed along
this Range.**

**S.O.S.
"Save our Scone"**

The Upper Hunter Landscape Guardians Inc. is a non-profit, community organisation based in Scone.

The membership is drawn from urban and rural residents who support the development of renewable energy technologies which need to be environmentally and economically sustainable and NOT adversely impact on the landscape and community of Scone

Scone is the Horse Capital of Australia. A country town that is known for its rural lifestyle. As part of the Upper Hunter Shire, it is world renowned for its horse breeding industry, wineries and national parks.

Pamada Pty Ltd, a Sydney based company, in conjunction with a local landholder propose the development of the Kyoto Energy Park. A large part of this consists of 47 wind turbines on 2 sites—the Glen Ranges on Middlebrook Station, adjoining the Towarri National Park boundary (12) and Mountain Station at Owen's Gap (35).

The height of each wind turbine will be up to 150 metres (almost 500 feet). That is the height of a 40 story building or the Sydney Harbour Bridge.

The UHLG, do not oppose renewable forms of energy, rather we oppose intrusive renewables that affect our landscape, well being, visual amenity and property values.

WHY IS THE WIND INDUSTRY SO CONTROVERSIAL?

- ⇒ Wind turbine power is variable and unreliable
- ⇒ Wind power replaces very little, if any, conventional generating capacity
- ⇒ It is not green and it is not cheap
- ⇒ It does not replace coal fired power stations
- ⇒ It will not stop coal being mined and exported
- ⇒ Fire hazard, lightening strikes and increased stray voltage
- ⇒ Noise generated by wind turbines can travel many kilometres
- ⇒ Strobe/flicker effects intrude into people's homes and lives
- ⇒ Communication interruption into television, wireless and phone



Wind Turbine on fire in the UK.
This happened in South Australia in 2006 resulting in power cuts.

WHY IS THE WIND INDUSTRY SO CONTROVERSIAL?

- ⇒ Property is devalued by a large % and in some cases is not saleable
- ⇒ Turbine technology has not significantly advanced other than in size
- ⇒ Accidents and malfunctions of turbines is on the rise
- ⇒ Unlike other renewables wind power cannot be stored for use when required.
- ⇒ Impact on landscape views
- ⇒ Loss of wildlife and habitat
- ⇒ Tourism has been negatively impacted on interstate



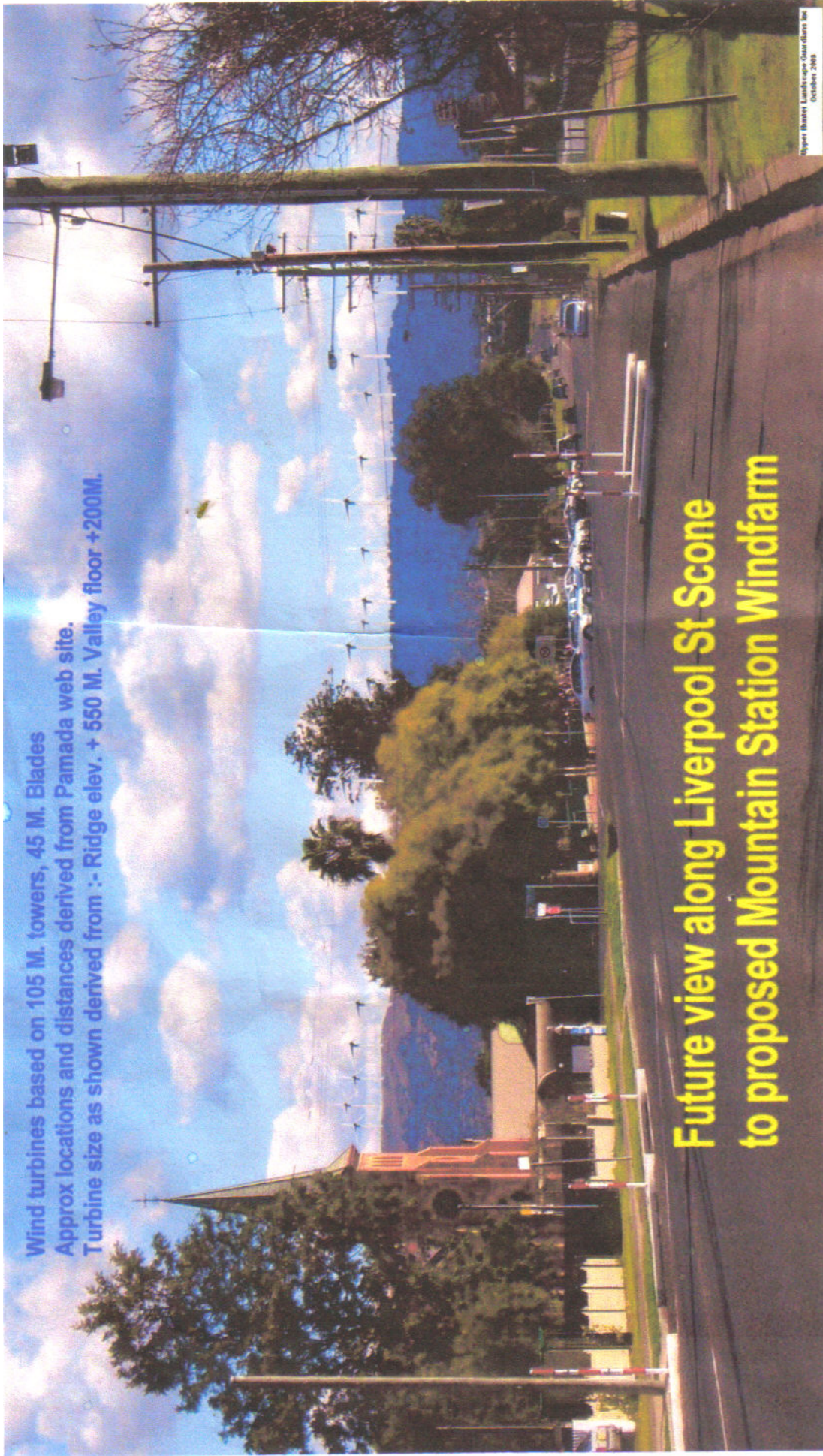
120m wind turbine is just lower than the Sydney Harbour Bridge. Imagine another 30m!



Further information can be obtained from National Wind Watch.

www.wind-watch.org

Upper Hunter Landscape Guardian Group Inc;
S.O.S. "Save our Scone".



This depiction has been prepared by one of our members using topographical maps and Google Earth to ensure as much accuracy as possible based on the information available. The shot is taken from the corner of Hill and Liverpool Streets, Scone. It shows St Luke's Church as the major landmark. The distance to the nearest turbine is approximately 9.65 km.

At Pamada's Open Day in February 2008 the photo montage prepared by their consultant was actually taken from Redbank Drive behind the hospital, we believe. That was a distance of approximately 11.5 km. The NSW Department of Planning Environmental Assessment requirements for the Kyoto Energy Park requires the developer to "assess the visual impact for a distance of at least 10 km from the turbines". Clearly, Pamada and their consultants, produced their photo montage in an attempt to lessen the visual impact that these monster sized wind turbines and towers will have on the residents of Scone, especially those on the western side. We are sure all residents of Scone township will empathise with those residents who are much closer and whose properties border the proposed development site. In many cases the wind turbines are as close as approximately 1.5 km and in several cases even closer.

The destruction of resident's visual amenity is but only one component of this massive industrial development. Those residents within a 5 km radius will suffer from the horrendous noise generated from these devices. The developers and the State and Federal Governments are ignoring overseas evidence of the health impact that inadequate setbacks have on residents.



November 2008

Upper Hunter Landscape Guardians Inc.



What's been happening since our last newsletter?

Your committee met again in November.

- Further submissions have been made to the National Wind Farm Code committee in relation to adequate setbacks for wind turbines.
- The Rural Fire Service visited 2 member's properties. We are attempting to get in writing from them confirmation of comments they made during the site visits.
- A submission was sent to the RAID coordinators for the rally in Sydney on October 16 against inappropriate development. The rally was a huge success and our submission along with those from 30 other community groups was presented to the Premier's office. Over 1000 people attended the rally.
- Our AGM was held on September 21 followed by a General Meeting. Minutes of both those meetings are being distributed with this newsletter.

Office Bearers & Committee contact details:

President: Carmelle Lymbery
6545 2769

Vice President:

Gordon Halliday 6545 2814. Email:
yarrandi@activ8.net.au

Treasurer: Barry Lymbery

Committee:

Noreen Marshall 6545 1406 Email:
norna@gobushmail.com.au

Jenny Moschner 6545 3626 Email:
jennifertaniamoschner@hotmail.com

Anne Davies (& Assist Secretary)
6545 3013 Email:

annedaviesno1@activ8.net.au

Keith Thompson 6545 9395 Email:
keithtomo@gmail.com

The position of Secretary is still vacant. Please contact Carmelle or anyone of the committee if you would like to put your hand up. We need your help.

Photo Montages

The back page of this newsletter contains the first in a series of montages we are producing.

A copy of this montage has been sent to the Upper Hunter Shire Council and Councillors with our follow-up letter requesting answers to our previous questions. Further copies have been sent to George Souris and Joel Fitzgibbon.

Most people will have trouble conceptualising structures of this magnitude and hence the photo montages clearly make a statement that is difficult for anyone to ignore.

The number of residences that will be directly affected by this development in relation to visual amenity and noise alone is at least 60. This excludes the people living in Scone township and immediate surrounds

Still No News on the Environmental Assessment

Once again Pamada have failed to deliver the EA within the timeframes they have indicated to residents and to the Upper Hunter Shire Council.

There is still no news on a realistic date. Historically all Government Departments have cut off dates due to the pending holidays and even if the EA is delivered this month the amount of work the Dept of Planning has to do to assess it before it goes on public display is huge. It is the UHLG's view that it would be highly unlikely that even if Pamada lodged this month that anything would be forthcoming from the Dept of Planning before Christmas.

This does not mean you should be complacent. Continue to check the NSW Dept of Planning web site:

<http://www.planning.nsw.gov.au/asp/register2006.asp#hunt> Search for 06_0055 which is the Kyoto Energy Park. This will provide you with the status of the project.



The UHLG Committee invites all members to a BBQ lunch on Sunday

December 7 commencing at 11am
at Carmelle and Barry Lymbery's
280 Thompsons Creek Road, Scone

Bring your own meat, salad and a chair. BYOG

RSVP by December 1 to Carmelle & Barry on 6545 2769

We look forward to seeing you there rain, hail or shine