



Figure 4.5a | The proposed transmission line will be similar to the one shown above with distribution lines located on a wooden cross bar with higher voltage transmission line above. See pole marked. This transmission line is located on Denman Road, Muswellbrook.



Figure 4.5b | This photo shows a single circuit 132kV transmission line. the proposed 66/33 kV line will have a set of insulators and conductors on both sides of the pole if option one is used. If option 2 is used there will only be one set of conductors as illustrated in the photo.

right: Winters Road
below: Middlebrook Site Access



above: Bunnan Road
above right: Moobi Road
right: Bunnan Road near TAFE



Figure 4.5c | Nearly all routes considered for transmission line options support existing power lines that will be amalgamated into the new transmission line structures.



Figure 4.5d | Options 3 and 4, in small part, follow Back Muswellbrook Road. This road currently supports a distribution powerline, the cables of which would be incorporated into the new pole structure.



Figure 5.1a | Middlebrook Station is a distinctive landscape created by a high integrity visual setting and feature elements such as Castle Rock and adjoining cliffs.



Figure 5.1b | Mountain Station has more common landscape features including clear gentle slopes and tree retention on steep slope areas, but also has isolated pockets of distinctive rock outcropping.

Figure 5.1 | The site.

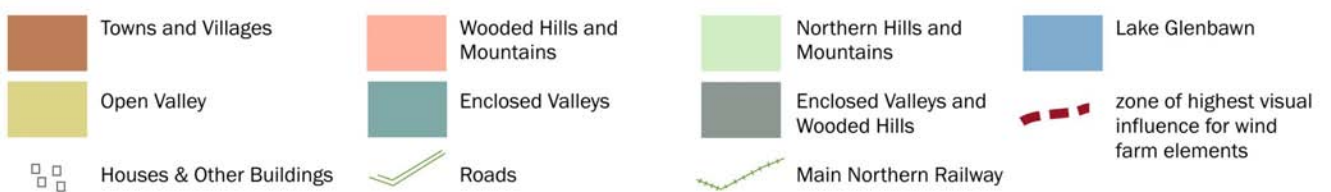
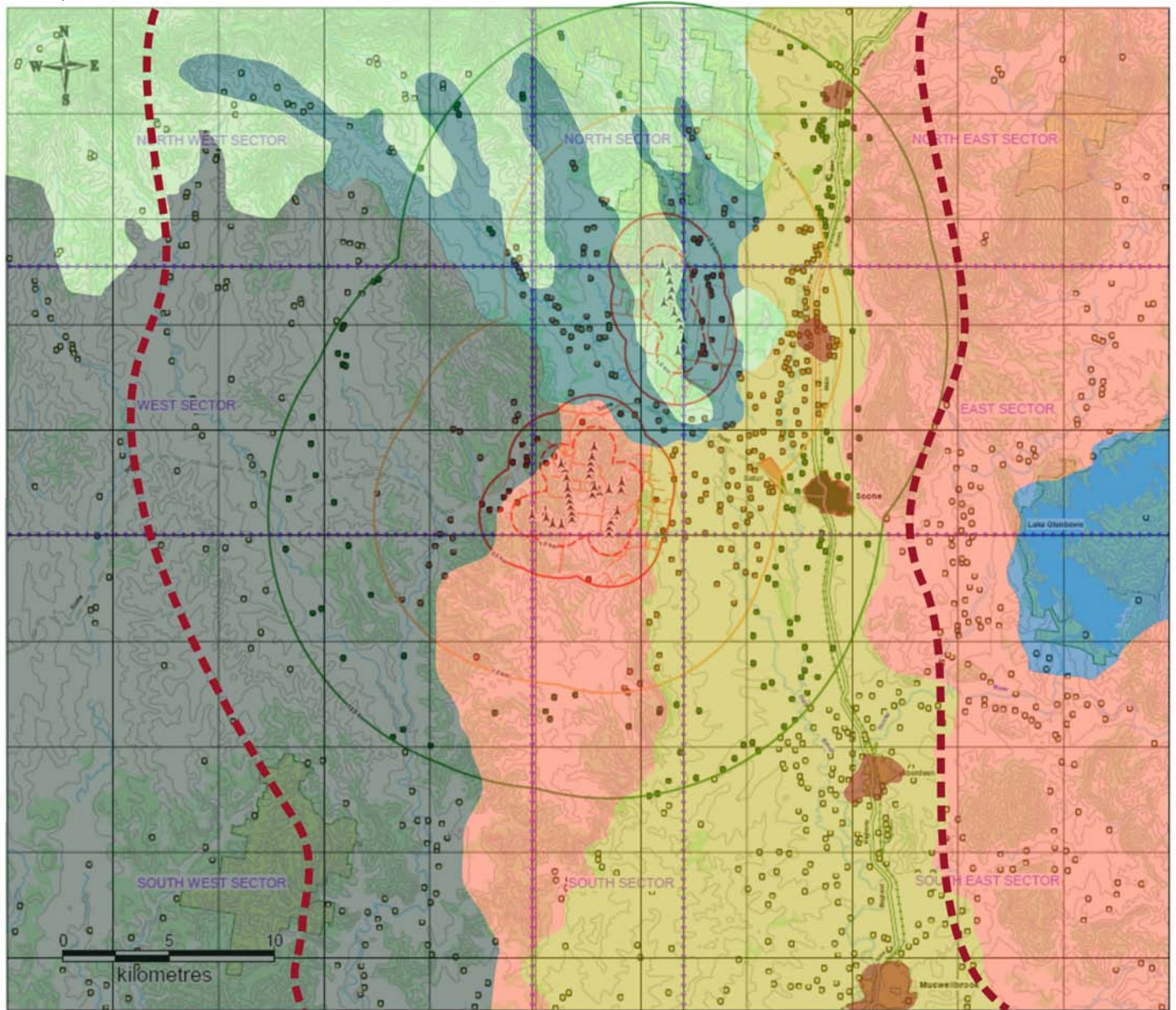


Figure 5.2 | Landscape Zones and Units



Figure 5.3 | Townships and Villages VCU

Villages dominated by built forms that include housing, shops, commercial and industrial buildings and streetscapes that give access to the various land use areas within the town/village areas. This VMU contains sensitive residential development that may view wind farm areas.





Figure 5.3 | Townships and Villages VCU. Streets contain many foreground elements that often block or limit views to distant hills and mountains.



Figure 5.4 | Broad Valley VCU

Valley is flat to gently sloping and is generally dominated by grasslands and crops. This allows for expansive views over the unit and into other units such as the adjoining hills and mountains. This unit contains sensitive rural residences.



Figure 5.5 | Enclosed Valley VCU

Enclosed valleys occur in the northern part of the study area. Small valleys surrounded by enclosing hills create intimate landscapes with mixed vegetation and land form features. Views are to surrounding hills and down the valleys. This unit contains sensitive rural residences.





Figure 5.6 | Eastern and Western Wooded Hills and Mountains VCU

These features create enclosure and edge to many of the view sheds within the primary visual catchment. The hills have varied topographic form and in some places include cliffs and rock formation. Hills are generally steep and support grassland, scattered trees, woodland and some open forest.



Figure 5.6 | Eastern and Western Wooded Hills and Mountains VCU