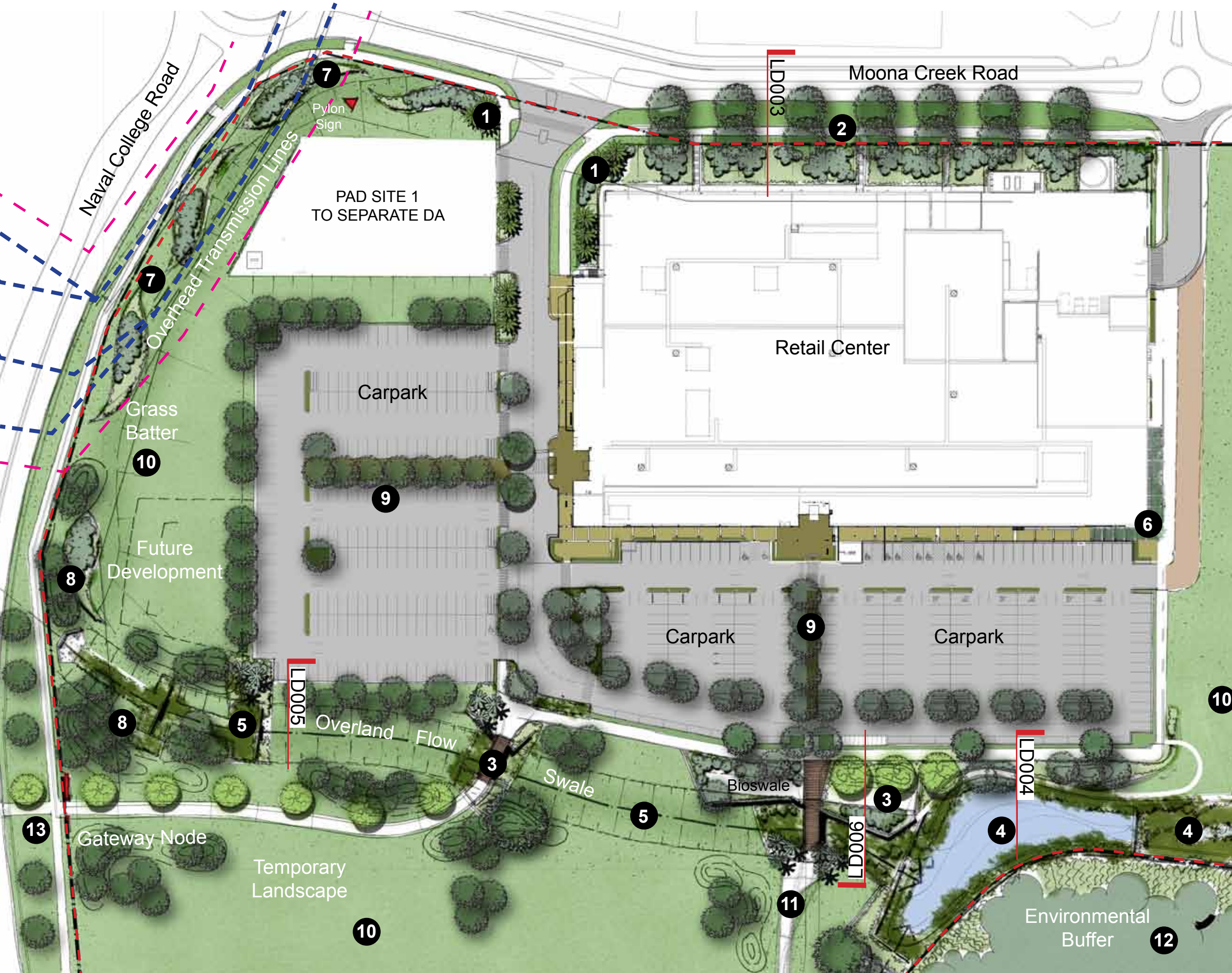


SHOALHAVEN MARKET PLACE - VINCENTIA

LANDSCAPE SHEET LIST	
SHEET NAME	SHEET NUMBER
Stage 1A Landscape Design Summary	001
Landscape Planting Palette	002
Typical Section - Moona Road - Development	003
Typical Section - Pond - Carpark	004
Typical Swale Section	005
Typical Bridge - Pedestrian/Cycle Section	006

Status	Mod. 6 Submission	
RLA	Andrew Turnbull	
Print Date	20 October 2014	
Rev	Description	Date
A	Refer Mod. 5	18.11.13
B	Mod. 6 Submission	08.07.14
C	Mod. 6 Submission	14.10.14
D	Mod. 6 Submissiom	20.10.14





Rev	Description	Date
A	Refer Mod. 5	18.11.13
B	Mod. 6 Submission	08.07.14
C	Mod. 6 Submission	14.10.14
D	Mod. 6 Submission	20.10.14

1. GATEWAY PLANTING
Feature entry planting with *Doryanthes excelsa* and native grasses - Feature *Livistona Palm*. Tree planting limited by RFS guidelines and high voltage overhead wire setbacks.

2. MOONA CREEK ROAD
Structured planting to bank with native feature tree planting of *Eucalyptus sclerophylla* with native understorey planting where appropriate.

3. PEDESTRIAN - CYCLE BRIDGE
Bridge to overland flow swale with native grasses to invert. Controlled carpark SW discharge into engineered bioswale. Gabion retaining elements to address level transitions. Integration of *Livistona palms* at bridge crossing.

4. SEDIMENT BASIN & WETLAND
Grass and reed planting to basin edges, with native feature tree planting of *Melaleuca* & *Casuarina* spp. Shade planting provided by *hymenosporum* spp. with stands of *Banksia integrifolia*.

5. GRASSED SWALE
Engineered grassed swale profile with feature planting of native grasses to gabion drop structures

6. ARBOUR WALK
Suspended arbour with *Hardenbergia violacea* (alba), *Hibbertia scandens*, *Pandorea jasminoides* and *Pandorea pandorana*.

7. BUFFER PLANTING
Native buffer planting to screen development from Naval College Road - *Eucalyptus sclerophylla* (used where RFS guidelines permit) with native grass, shrub understorey and integration of *Banksia ericifolia* to planting areas.

8. OVERLAND SWALE BUFFER PLANTING
Mounded earth forms and integration of native tree selections; *Eucalyptus*, *Angophora*, *Tristaniopsis* & *Lophostemon* planted in grass.

9. CARPARK PLANTING
Canopy tree planting of *Tristaniopsis laurina* and *Lophostemon confertus* with native grass understorey planting. Native tree selections to carpark edge conditions. Native grasses to carpark median.

10. TEMPORARY LANDSCAPE
Revegetated native grassland and select buffer planting. Note: Landscape not to disrupt sight lines & view corridor.

11. SHARE BIKE / PEDESTRIAN PATH
Pedestrian and Cycle accessway to adjoining areas.

12. ENVIRONMENTAL BUFFER
Protective fence installed to environmental buffer interface with sedimentation pond and wetland.

13. GATEWAY NODE - PEDESTRIAN
Introduction of large canopy deciduous tree - *Platanus* spp. and low scale entry wall element.



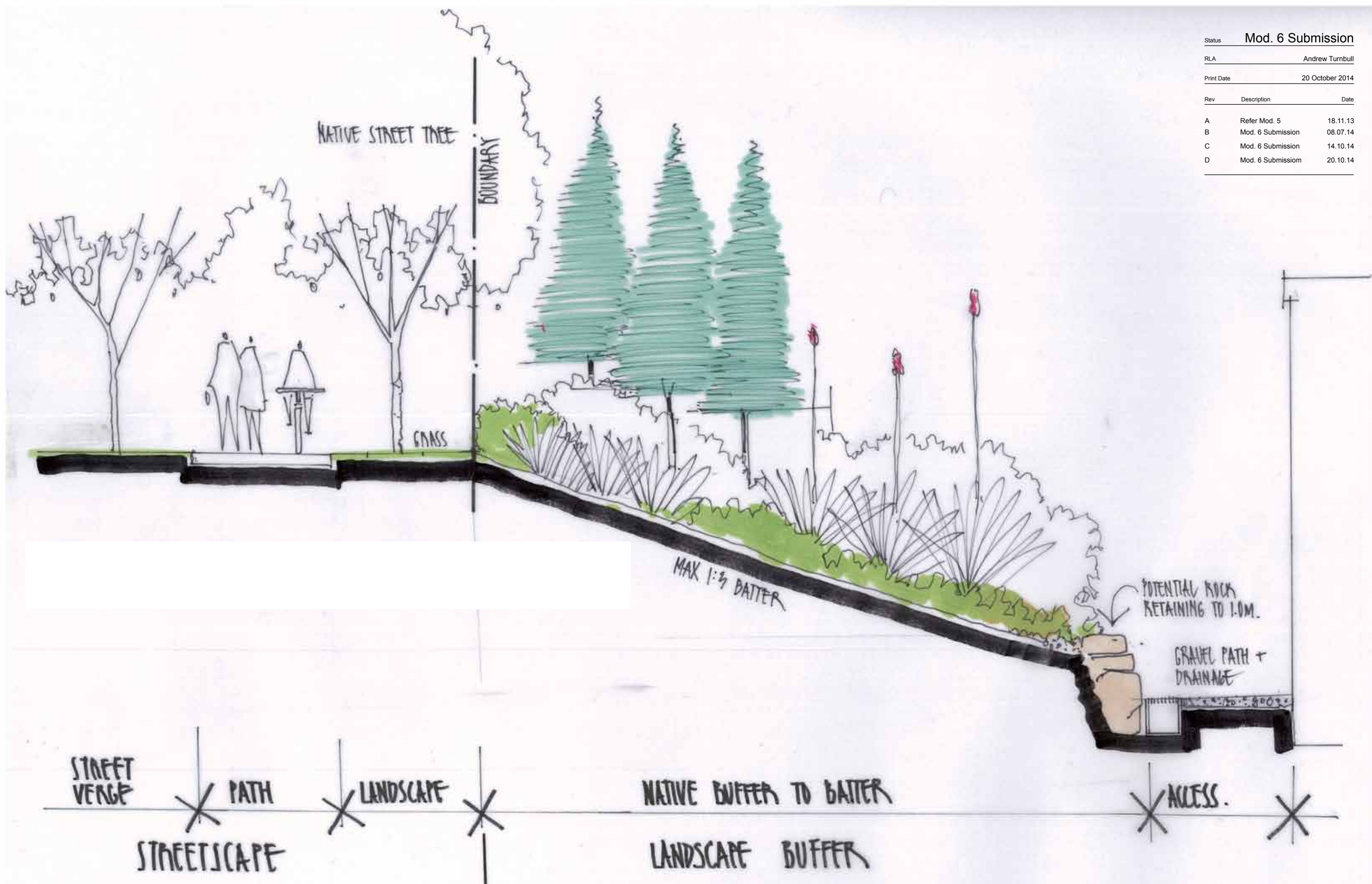
INDICATIVE PLANT SCHEDULE		
BOTANIC NAME	COMMON NAME	MATURE HEIGHT
Gateway Trees / Plants		
Angophora hispida	Dwarf Apple	4m
Eucalyptus sclerophylla	Scribbly Gum	8-15m
Doryanthes excelsa	Gymea Lily	2-3m
Feature Trees		
Tristaniopsis laurina	Water Gum	8m
Eucalyptus sclerophylla	Scribbly Gum	10-15m
Lophostemon conferta	Lophostemon	10m
Livistona australis	Cabbage Palm	10m
Native Buffer Planting Mix		
Allocasuarina littoralis	Black She-Oak	8m
Corymbia gummifera	Red Bloodwood	10-15m
Corymbia maculata	Spotted Gum	20-30m
Eucalyptus botryoides	Bangalay	30m
Eucalyptus pilularis	Blackbutt	40m
Eucalyptus racemosa	Narrow-Leave Scribbly gum	15m
Waterfront Park		
Angophora hispida	Dwarf Apple	4m
Banksia integrifolia	Coastal Banksia	12m
Hymenosporum flavum	Native Frangipani	10m
Melaleuca styphelioides	Broad Leaved Paperbark	10m
Understorey Planting		
Banksia ericifolia	Heath Banksia	5m
Carex appressa	Tall Sedge	1m
Dianella sp	Flax Lily	0.3-1m
Doryanthes excelsa	Gymea Lily	2-3m
Hakea teretifolia	Dagger Hakea	1-3m
Heathland Species		
Lomandra longifolia ‘Tanika’	Tanika	0.3m
Poa labillardieri ‘Eskdale’	Blue Tussock	0.8m
Themeda australis	Kangaroo Grass	1.2m

INDICATIVE PLANT SCHEDULE		
BOTANIC NAME	COMMON NAME	MATURE HEIGHT
Bioswale Trees		
Eucalyptus sclerophylla	Hard Leaved Scribbly Gum	20m
Melaleuca styphelioides	Broad-Leaved Paperbark	10m
Climbers		
Hardenbergia violacea ‘Alba’	Purple Coral Pea	2m (spread)
Hibbertia scandens	Climbing Guinea Flower	4m (spread)
Pandorea jasminoides	Bower of Beauty	2-4m (spread)
Pandorea pandorana	Wonga Wonga Vine	2-3m (spread)
Wetland Planting		
Baumea articulata	Joined Twig Rush	1-2.5m
Bolboschoenus fluviatilis	Marsh Club Rush	1-2m
Carex appressa	Tall Sedge	1m



Status	Mod. 6 Submission	
RLA	Andrew Turnbull	
Print Date	20 October 2014	
Rev	Description	Date
A	Refer Mod. 5	18.11.13
B	Mod. 6 Submission	08.07.14
C	Mod. 6 Submission	14.10.14
D	Mod. 6 Submission	20.10.14

Rev	Description	Date
A	Refer Mod. 5	18.11.13
B	Mod. 6 Submission	08.07.14
C	Mod. 6 Submission	14.10.14
D	Mod. 6 Submission	20.10.14



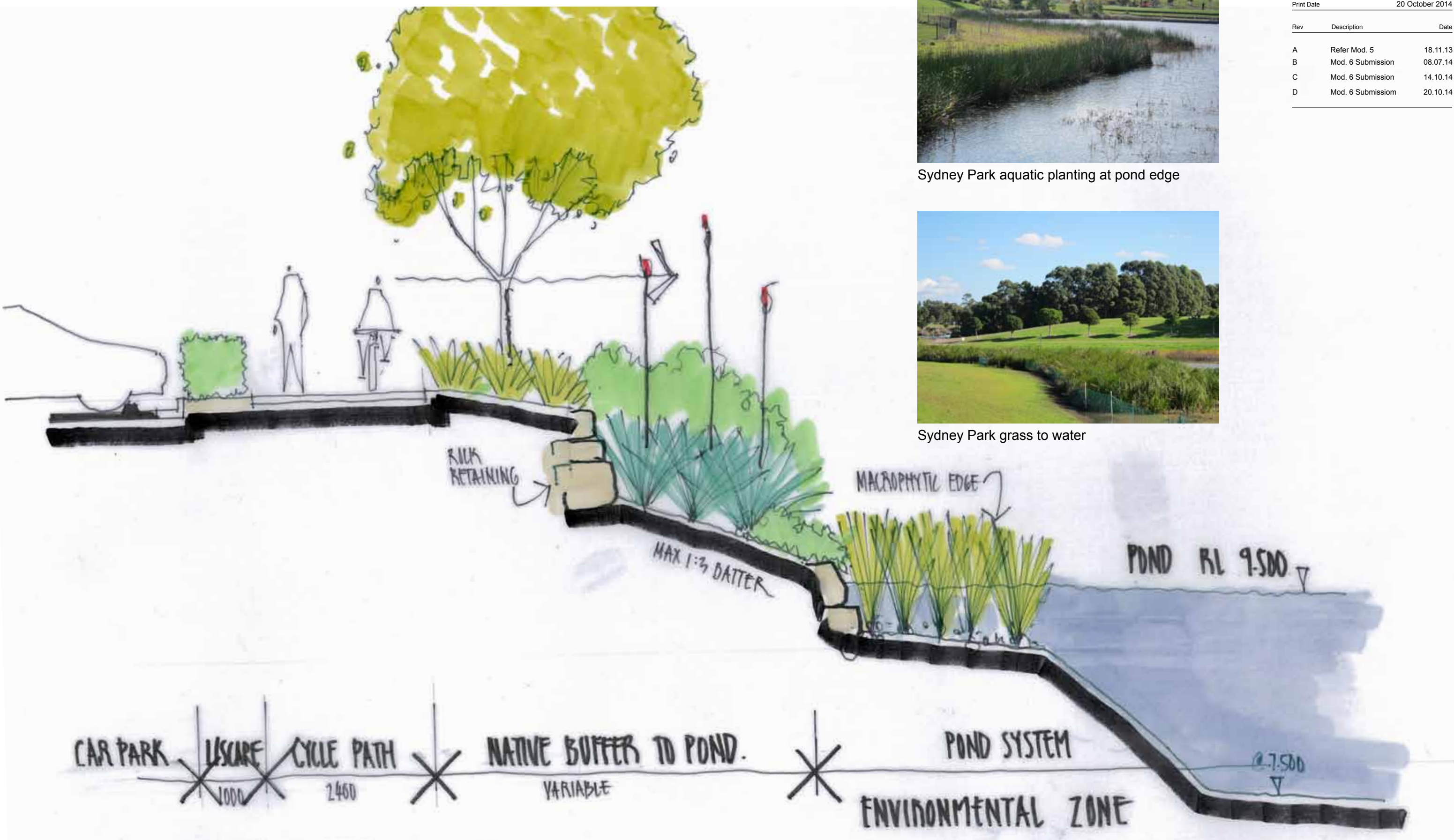
Rev	Description	Date
A	Refer Mod. 5	18.11.13
B	Mod. 6 Submission	08.07.14
C	Mod. 6 Submission	14.10.14
D	Mod. 6 Submission	20.10.14



Sydney Park aquatic planting at pond edge



Sydney Park grass to water



Rev	Description	Date
A	Refer Mod. 5	18.11.13
B	Mod. 6 Submission	08.07.14
C	Mod. 6 Submission	14.10.14
D	Mod. 6 Submission	20.10.14

PRECEDENTS



Sydney Park car park bioswale



Raingarden, Edinburgh Park, VIC



Victoria Park boardwalk



Sydney Park swale

Biofiltration and water harvesting elements previously included in the development are remaining. The boardwalk connection previously buried beneath the retail environment is now opened to a boardwalk for its full length to the wetlands and village green area.



Rev	Description	Date
A	Refer Mod. 5	18.11.13
B	Mod. 6 Submission	08.07.14
C	Mod. 6 Submission	14.10.14
D	Mod. 6 Submission	20.10.14

PRECEDENTS



Byron on Byron

