

Landscape Section 75W Works
Development Application

Vincentia District Centre

March 2011

Client: Fabcot Pty Ltd
c/o Compass Project Management



SITE IMAGE
Landscape Architects

VINCENTIA DISTRICT CENTRE

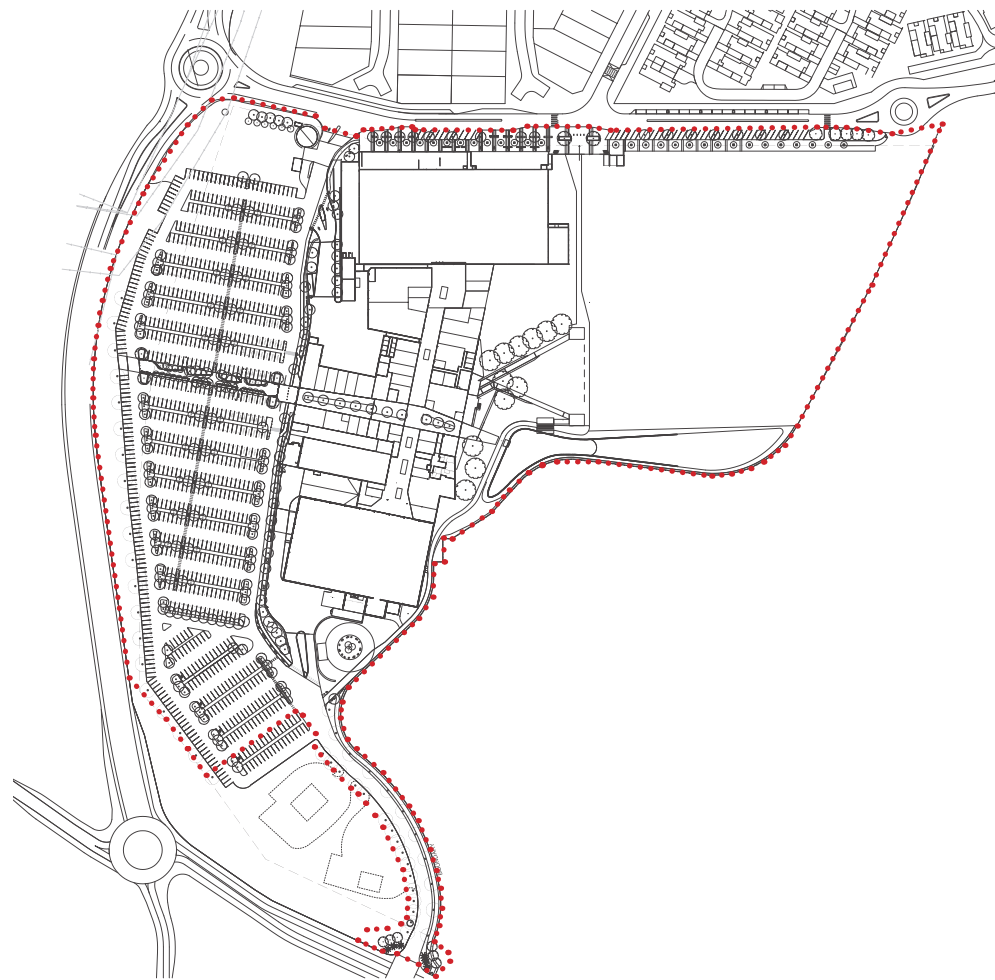
Client	Fabcot Pty Limited	Drawing Number	n/a
Architect	Rice Daubney	Issue	D
Site Image Job Number	SS10-2213	Date	23.03.2011

Vincentia District Centre - 75 W

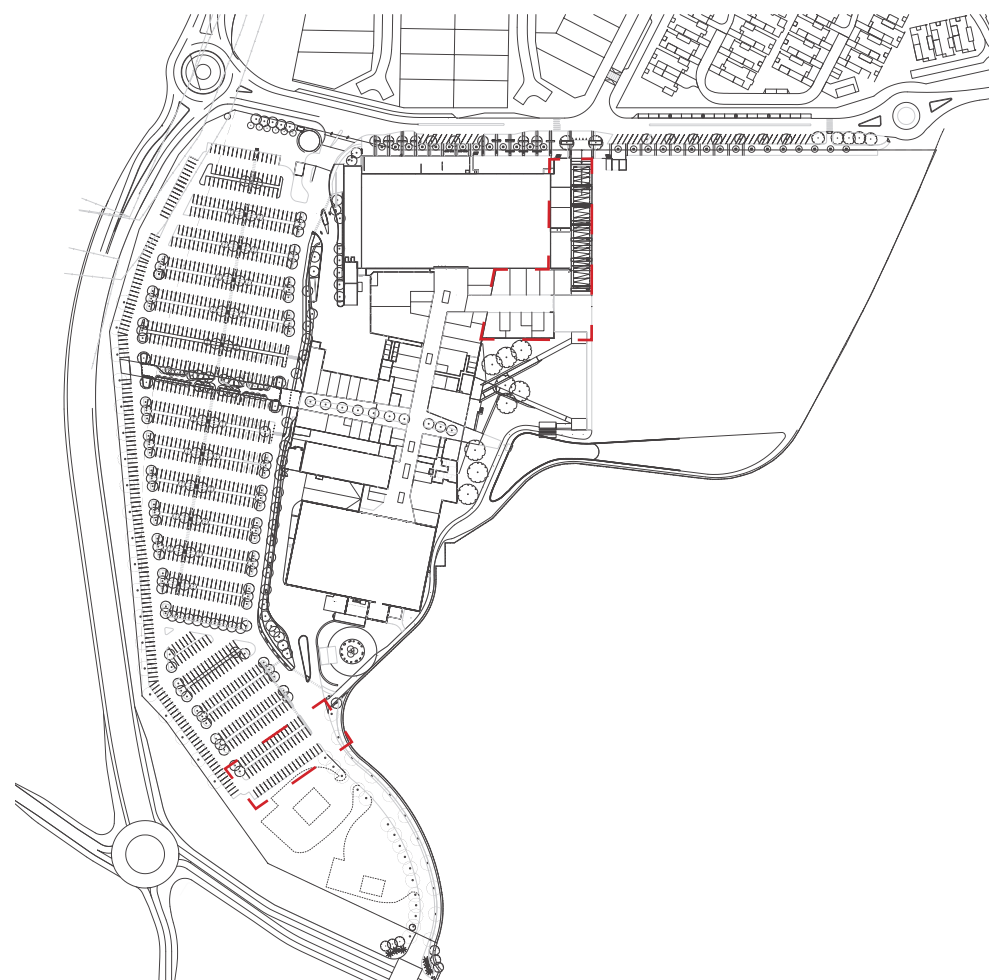
Drawing Schedule

DRAWING NO	TITLE	SCALE
LA01	Stages 1A, 1B & 2 Staging Plan	Not to Scale
LA02	Overall Planting Strategy	1:1000 @ A1
LA03	Landscape Concept Stage 1A	1:1000 @ A1
LA04	Landscape Concept Stage 1B	1:1000 @ A1
LA05	Landscape Concept Stage 2	1:1000 @ A1
LA06	Detailed Plans and Sections	Not to Scale
LA07	Detailed Plans and Sections	Not to Scale
LA08	Detailed Plan	Not to Scale

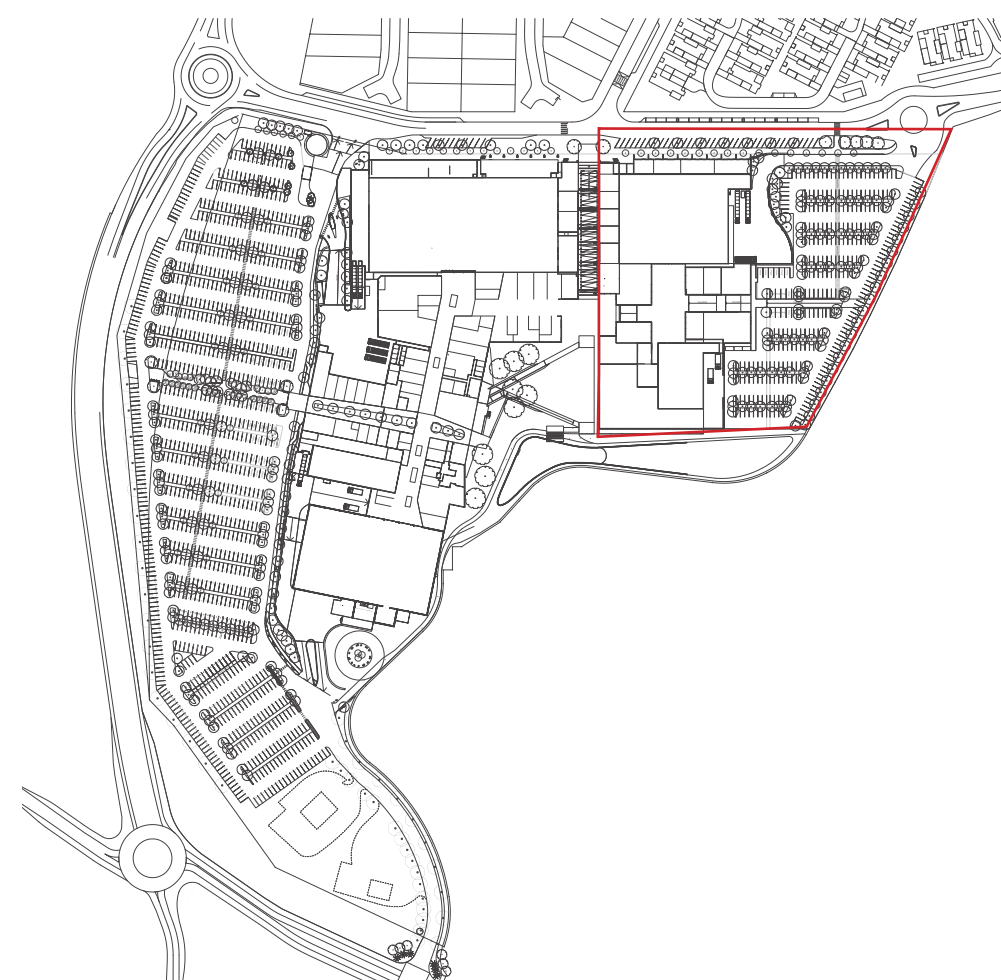




STAGE 1A PLAN



STAGE 1B PLAN



STAGE 2 PLAN

- EXTENT OF STAGE 1A WORKS
- - - - - EXTENT OF STAGE 1B WORKS
- EXTENT OF STAGE 2 WORKS
- (indicative only)



SITE IMAGE
Landscape Architects

VINCENTIA DISTRICT CENTRE

STAGES 1A, 1B and 2 STAGING PLAN

Client
Architect
Site Image Job Number
Scale N.T.S

Fabcot Pty Limited
Rice Daubney
SS10-2213

Drawing Number
Issue
Date

LA 01
D
23.03.2011



SITE IMAGE
Landscape Architects

VINCENTIA DISTRICT CENTRE

OVERALL PLANTING STRATEGY

Sydney Level 1/ 3-5 Baptist Street Surry Hills NSW 2010 Australia | T +61 2 9698 2899 | F +61 2 9698 2877 | www.siteimage.com.au | Site Image (NSW) Pty Ltd ABN 44 801 262 380 | Melbourne 15 Gisborne Street East Melbourne VIC 3002 Australia | T +61 3 9699 1947 | www.siteimage.com.au | Site Image (Victoria) Pty Ltd ABN 92 298 651 413

Client
Architect
Site Image Job Number
Scale

Fabcot Pty Limited
Rice Daubney
SS10-2213
1:1000@A1 / 1:2000@A3

Drawing Number
Issue
Date
0 5 10 25 50m

LA 02

D

23.03.2011



INDICATIVE PLANT PALETTE

BOTANIC NAME	COMMON NAME	MATURE HEIGHT EST.
TREES		
Angophora costata	Smooth-barked Apple	15m
Angophora hispida	Dwarf Apple	4m
Banksia integrifolia	Coastal Banksia	12m
Banksia serrata	Old Man Banksia	8m
Callistemon Viminalis	Weeping Bottlebrush	5m
Corymbia maculata	Spotted gum	20- 30m
Eucalyptus racemosa	Narrow- leaved Paperbark	15m
Eucalyptus sclerophylla	Hard- leaved Scribbly Gum	7-15m
Ficus rubiginosa	Port Jackson Fig	20m
Hymenosporum flavum	Native Frangipani	10m
Tristaniopsis laurina	Water Gum	6m

NATIVE BUFFER PLANTING TREE MIX		
Acacia filicifolia	Fern- leaf Wattle	14m
Allocuarina littoralis	Black Sheoak	8m
Corymbia gummifera	Red Bloodwood	5 - 15m
Corymbia maculata	Spotted Gum	20 - 30m
Eucalyptus botryoides	Bangaley	30m
Eucalyptus pilularis	Blackbutt	40m
Eucalyptus racemosa	Narrow- leaved Scribbly Gum	15m

INDOOR TREE PLANTING (CONTAINED IN RAISED PLANTERS)		
Ficus microcarpa (multi stemmed no. 3-6)	Hills Weeping Fig	4m

SHRUBS AND AMMENITY SCREENING		
Anigozanthos flavidus	Kangaroo Paw	1m
Banksia ericifolia	Heath Banksia	5m
Banksia spinulosa 'Giant Candles'	Giant Candles Banksia	0.5m
Callistemon linearis	Narrow Leafed Bottlebrush	3m
Ceratopetalum gummiferum	NSW Christmas Bush	5m
Correa alba	White Correa	1.5m
Correa baeuerlenii	Chef's Hat Correa	2m

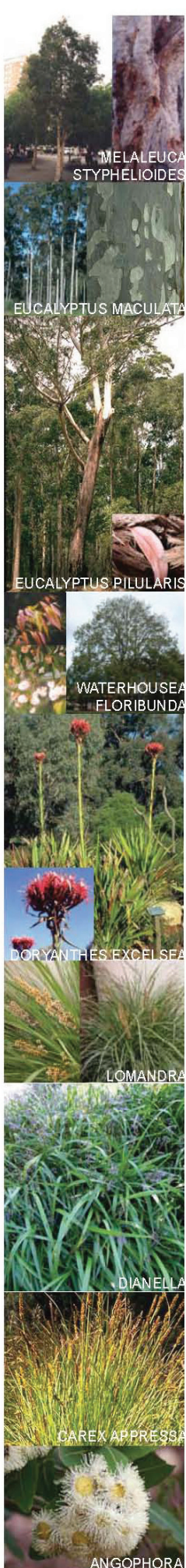
Dodonaea viscosa 'Purpurea'	Purple Leaved Hop Bush	2m
Hakea teretifolia	Dagger Hakea	1-3m
Kunzea capitata	Tick Bush	1.5m
Leptospermum juniperinum	Prickly Tea- Tree	3m
Leptospermum laevigatum	Costal Tea Tree	5m
Leptospermum polygalifolium	Yellow Tea- Tree	5m
Westringia fruticosa	Coastal Rosemary	1.5m

FEATURE PLANTS		
Doryanthes excelsa	Gynea Lily	3m
Macrozamia communis	Burrawang	2m
Xanthorrhoea glauca	Grass Tree	2m

NATIVE GRASS ACCENT PLANTING		
Carex appressa	Tall Sedge	0.8m
Dianella caerulea	Flax Lily	0.3m -1.5m
Lomandra longifolia	Spiny- headed Mat- rush	1m
Lomandra longifolia 'Tanika'	Tanika Mat Rush	0.5m- 0.6m
Poa labillardieri 'Eskdale'	Blue Tussock	0.8m
Themeda australis	Kangaroo Grass	1.2m

GROUNDCOVERS & CLIMBERS		
Hardenbergia violaecea 'Alba'	Purple Coral Pea	climber / scrambler
Hibbertia scandens	Climbing Guinea Flower	climber
Myoporum parvifolium	Creeping Boobialla	scrambler
Pandorea jasminoides	Bower of beauty	climber
Pandorea pandorana	Wonga- wonga Vine	climber
Scaevola aemula	Purple Fan Flower	0.3m

BENEATH POWER LINES
All planting located beneath overhead power lines is to comply with teh requirements of integral en-ergy's policy MM10013. Clearances are to be maintained between network assets and vegetation.



SITE IMAGE
Landscape Architects

VINCENTIA DISTRICT CENTRE

LANDSCAPE CONCEPT STAGE 1A

Client
Architect
Site Image Job Number
Scale

Fabcot Pty Limited
Rice Daubney
SS10-2213
1:1000@A1 / 1:2000@A3

Drawing Number
Issue
Date
0 5 10 25 50m

LA 03
D
23.03.2011



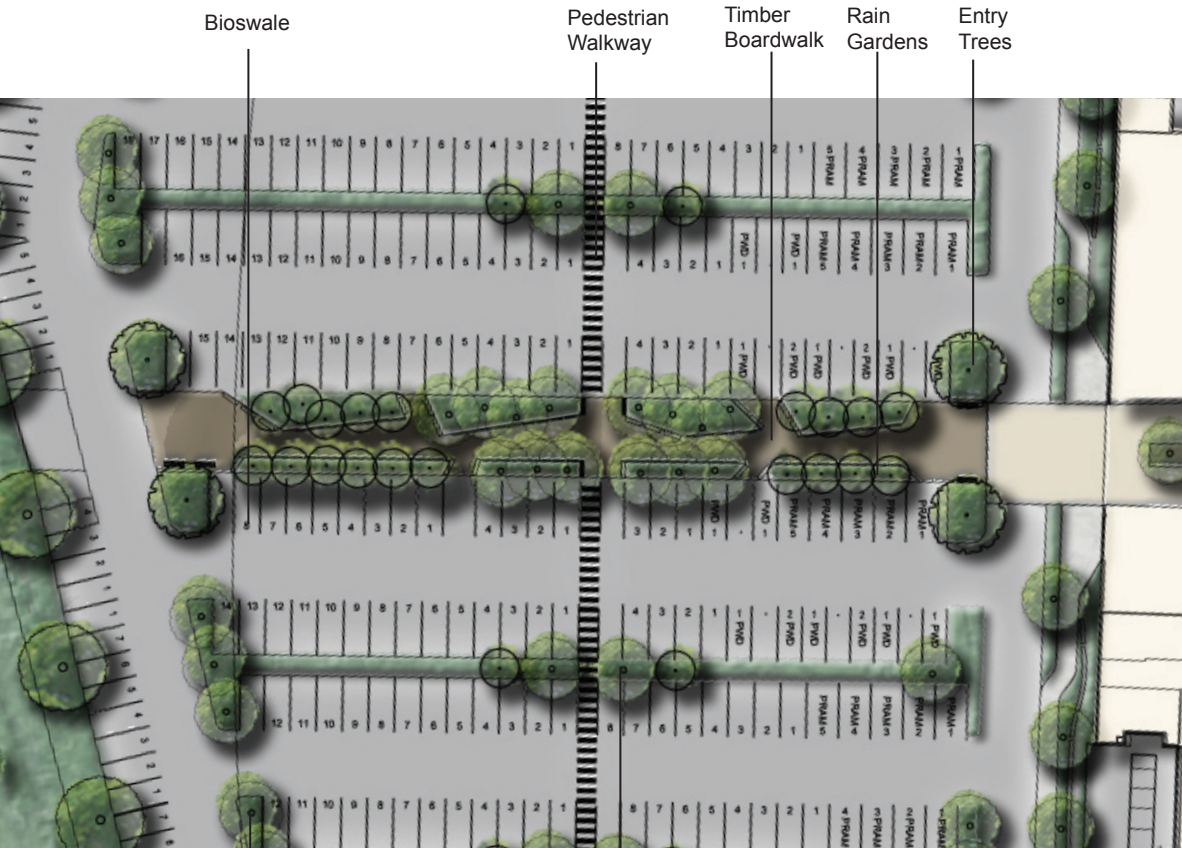
INDICATIVE PLANT PALETTE

BOTANIC NAME	COMMON NAME	MATURE HEIGHT EST.
TREES		
Angophora costata	Smooth-barked Apple	15m
Angophora hispida	Dwarf Apple	4m
Banksia integrifolia	Coastal Banksia	12m
Banksia serrata	Old Man Banksia	8m
Callistemon Viminalis	Weeping Bottlebrush	5m
Corymbia maculata	Spotted gum	20- 30m
Eucalyptus racemosa	Narrow- leaved Paperbark	15m
Eucalyptus sclerophylla	Hard- leaved Scribbly Gum	7-15m
Ficus rubiginosa	Port Jackson Fig	20m
Hymenosporum flavum	Native Frangipani	10m
Tristaniopsis laurina	Water Gum	6m
NATIVE BUFFER PLANTING TREE MIX		
Acacia filicifolia	Fern- leaf Wattle	14m
Allocuarina littoralis	Black Sheoak	8m
Corymbia gummifera	Red Bloodwood	5 - 15m
Corymbia maculata	Spotted Gum	20 - 30m
Eucalyptus botryoides	Bangaley	30m
Eucalyptus pilularis	Blackbutt	40m
Eucalyptus racemosa	Narrow- leaved Scribbly Gum	15m
INDOOR TREE PLANTING (CONTAINED IN RAISED PLANTERS)		
Ficus microcarpa (multi stemmed no. 3-6)	Hills Weeping Fig	4m
SHRUBS AND AMMENITY SCREENING		
Anigozanthos flavidus	Kangaroo Paw	1m
Banksia ericifolia	Heath Banksia	5m
Banksia spinulosa 'Giant Candles'	Giant Candles Banksia	0.5m
Callistemon linearis	Narrow Leafed Bottlebrush	3m
Ceratopetalum gummiferum	NSW Christmas Bush	5m
Correa alba	White Correa	1.5m
Correa baeuerlenii	Chef's Hat Correa	2m
Dodonaea viscosa 'Purpurea'	Purple Leaved Hop Bush	2m
Hakea teretifolia	Dagger Hakea	1-3m
Kunzea capitata	Tick Bush	1.5m
Leptospermum juniperinum	Prickly Tea- Tree	3m
Leptospermum laevigatum	Costal Tea Tree	5m
Leptospermum polygalifolium	Yellow Tea- Tree	5m
Westringia fruticosa	Coastal Rosemary	1.5m
FEATURE PLANTS		
Doryanthes excelsa	Gynea Lily	3m
Macrozamia communis	Burrawang	2m
Xanthorrhoea glauca	Grass Tree	2m
NATIVE GRASS ACCENT PLANTING		
Carex appressa	Tall Sedge	0.8m
Dianella caerulea	Flax Lily	0.3m -1.5m
Lomandra longifolia	Spiny- headed Mat- rush	1m
Lomandra longifolia 'Tanika'	Tanika Mat Rush	0.5m- 0.6m
Poa labillardieri 'Eskdale'	Blue Tussock	0.8m
Themeda australis	Kangaroo Grass	1.2m
GROUNDCOVERS & CLIMBERS		
Hardenbergia violaeacea 'Alba'	Purple Coral Pea	climber / scrambler
Hibbertia scandens	Climbing Guinea Flower	climber
Myoporum parvifolium	Creeping Boobialla	scrambler
Pandorea jasminoides	Bower of beauty	climber
Pandorea pandorana	Wonga- wonga Vine	climber
Scaevola aemula	Purple Fan Flower	0.3m

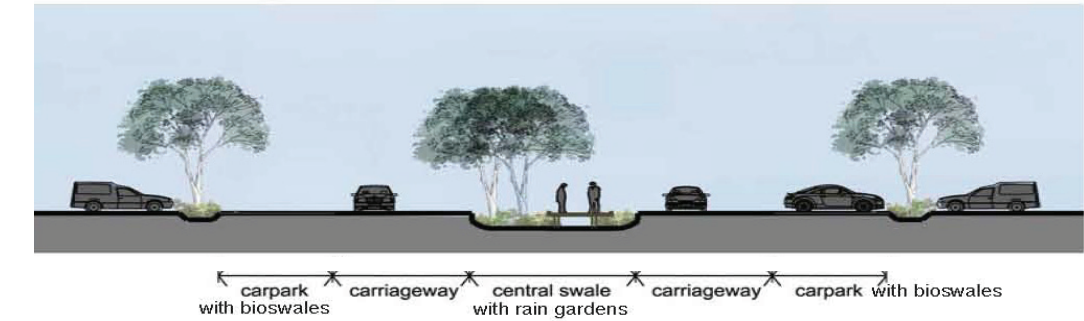
BENEATH POWER LINES
All planting located beneath overhead power lines is to comply with teh requirements of integral energy's policy MM10013. Clearances are to be maintained between network assets and vegetation.



BOARDWALK, RAINGARDENS AND BIOSWALES



A. PLAN - NTS

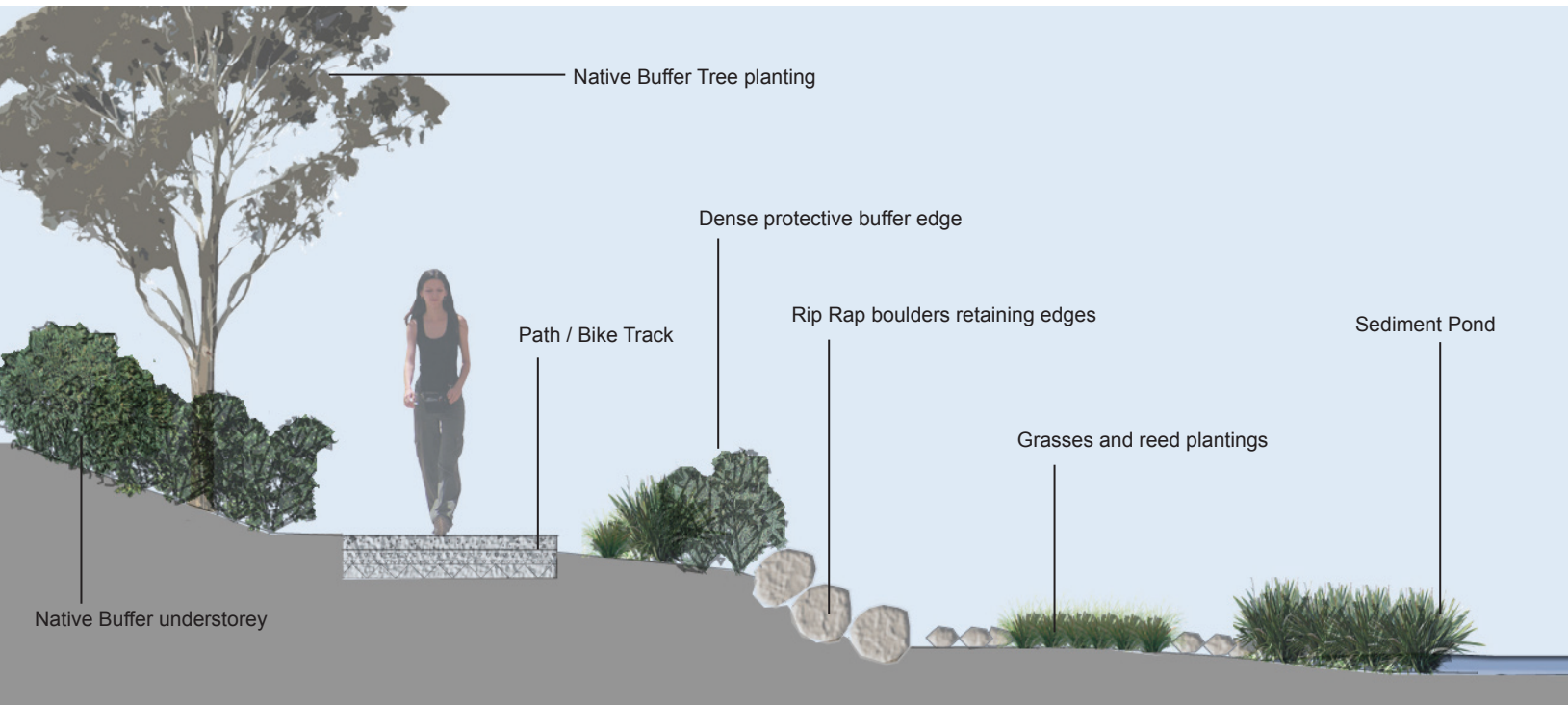


C. INDICATIVE SECTION THROUGH BOARDWALK - NTS

WATERFRONT PARK



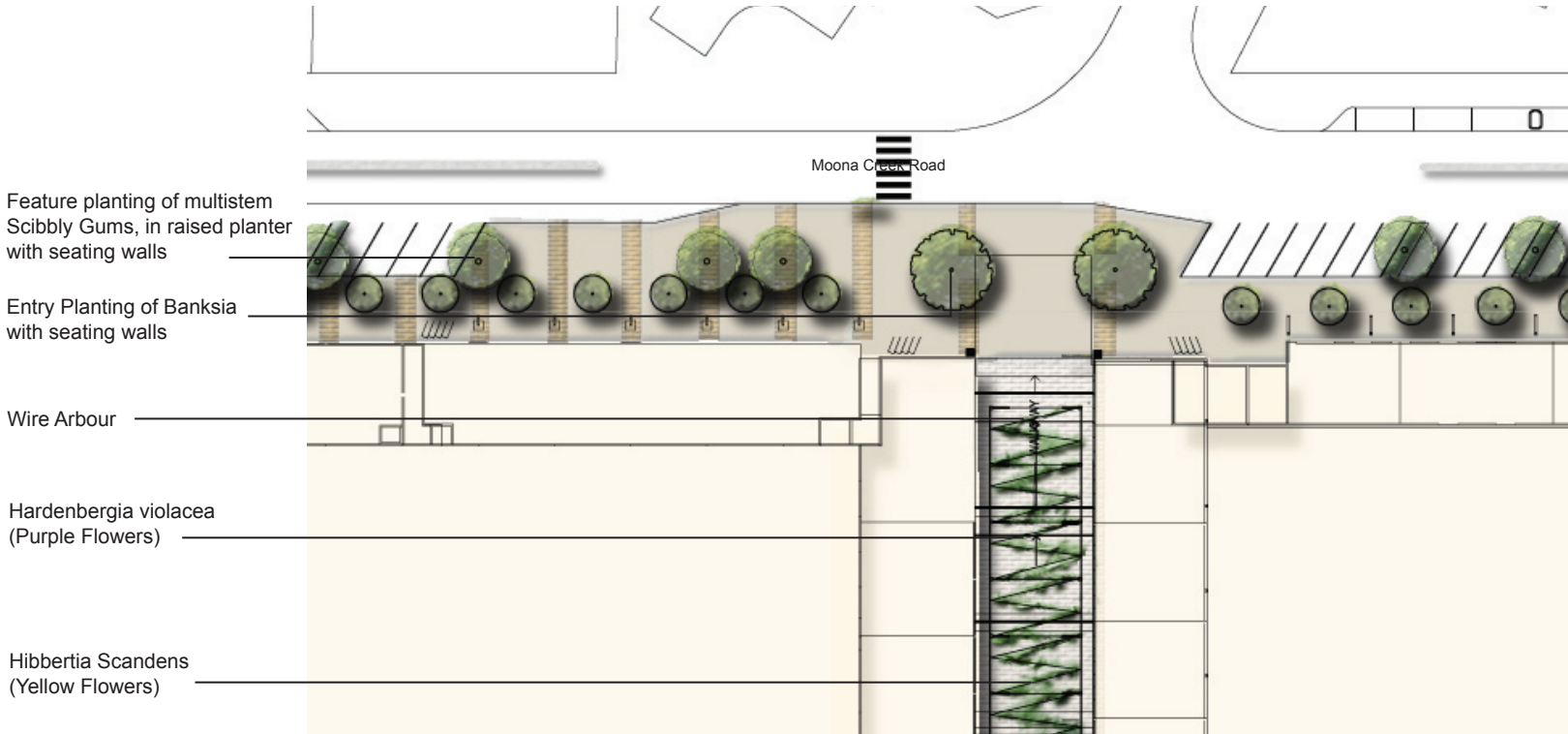
B. PLAN - NTS



D. INDICATIVE SECTION THROUGH THE WATERFRONT TERRACES - NTS

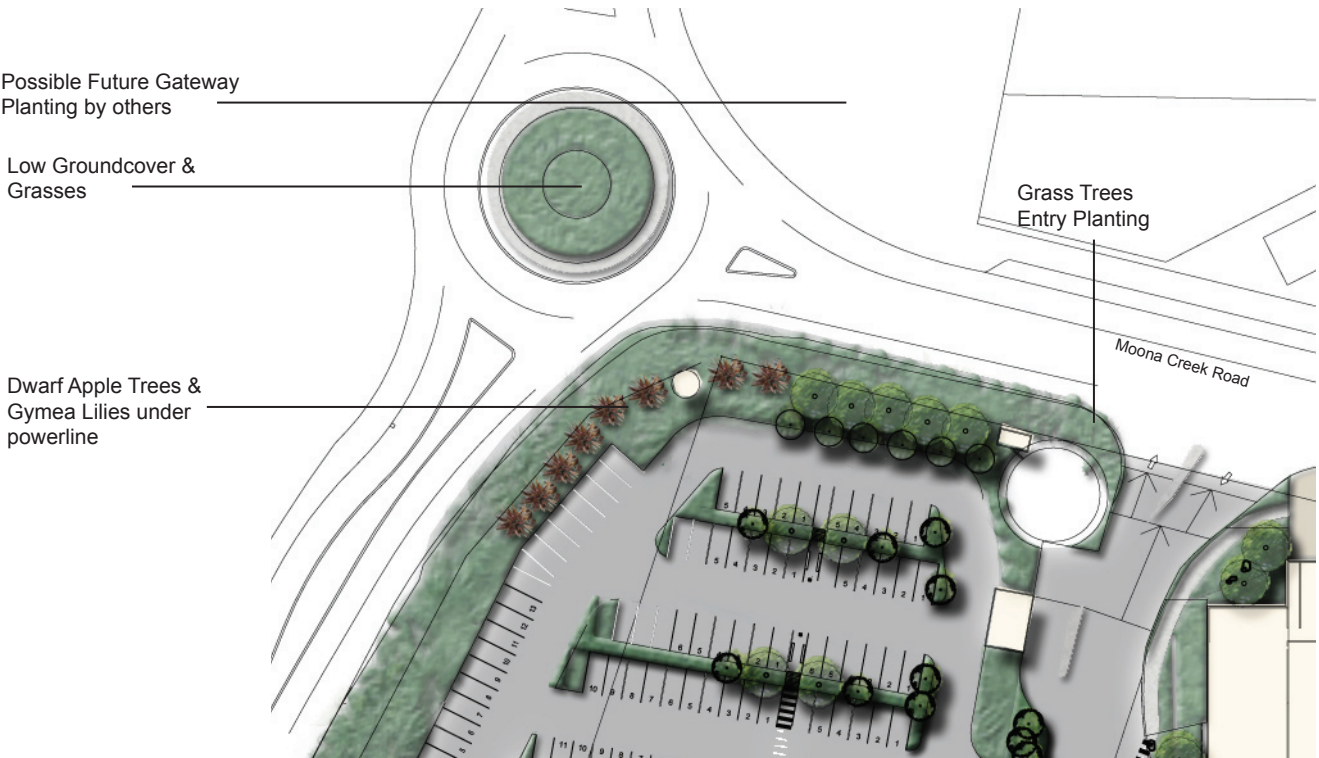


MOONA CREEK ROAD, ENTRY PLAZA TO TOWN CENTRE & ARBOURWALK



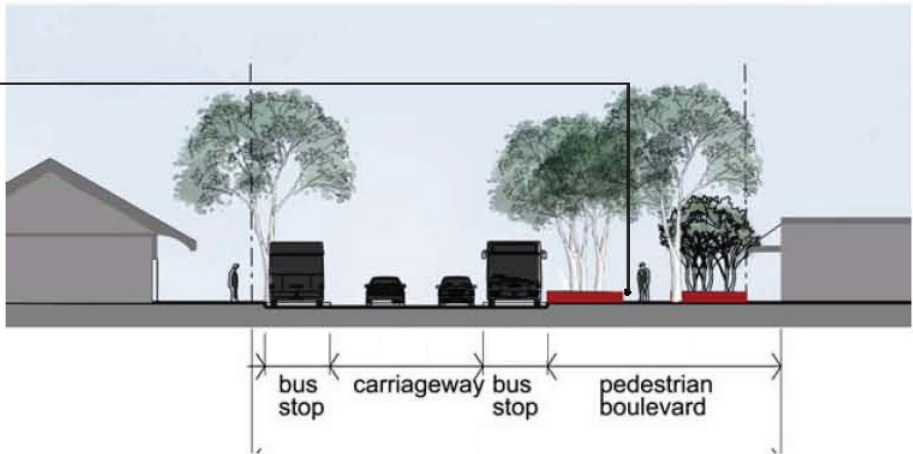
A. PLAN - NTS

GATEWAY PLANTING & ROUNDABOUT



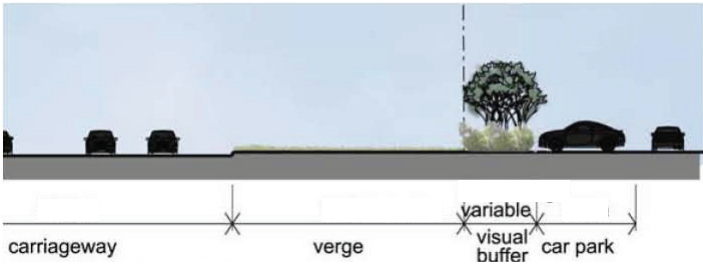
B. PLAN - NTS

Feature planting of multi-stem Scribbly Gums, in raised planter with seating walls. Indicative section only



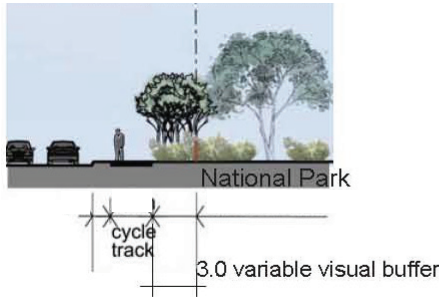
C. INDICATIVE SECTION THROUGH MOONA CREEK ROAD BETWEEN RETAIL & HOUSING - NTS

NAVAL COLLEGE ROAD

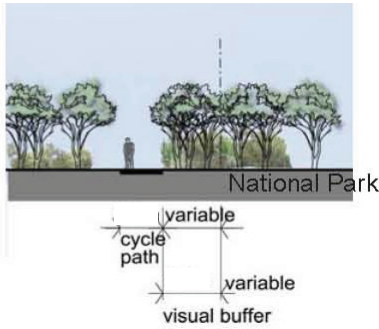


D. INDICATIVE SECTION - NTS

BIKE TRACK, FIRE VEHICLE ACCESS, VISUAL BUFFER

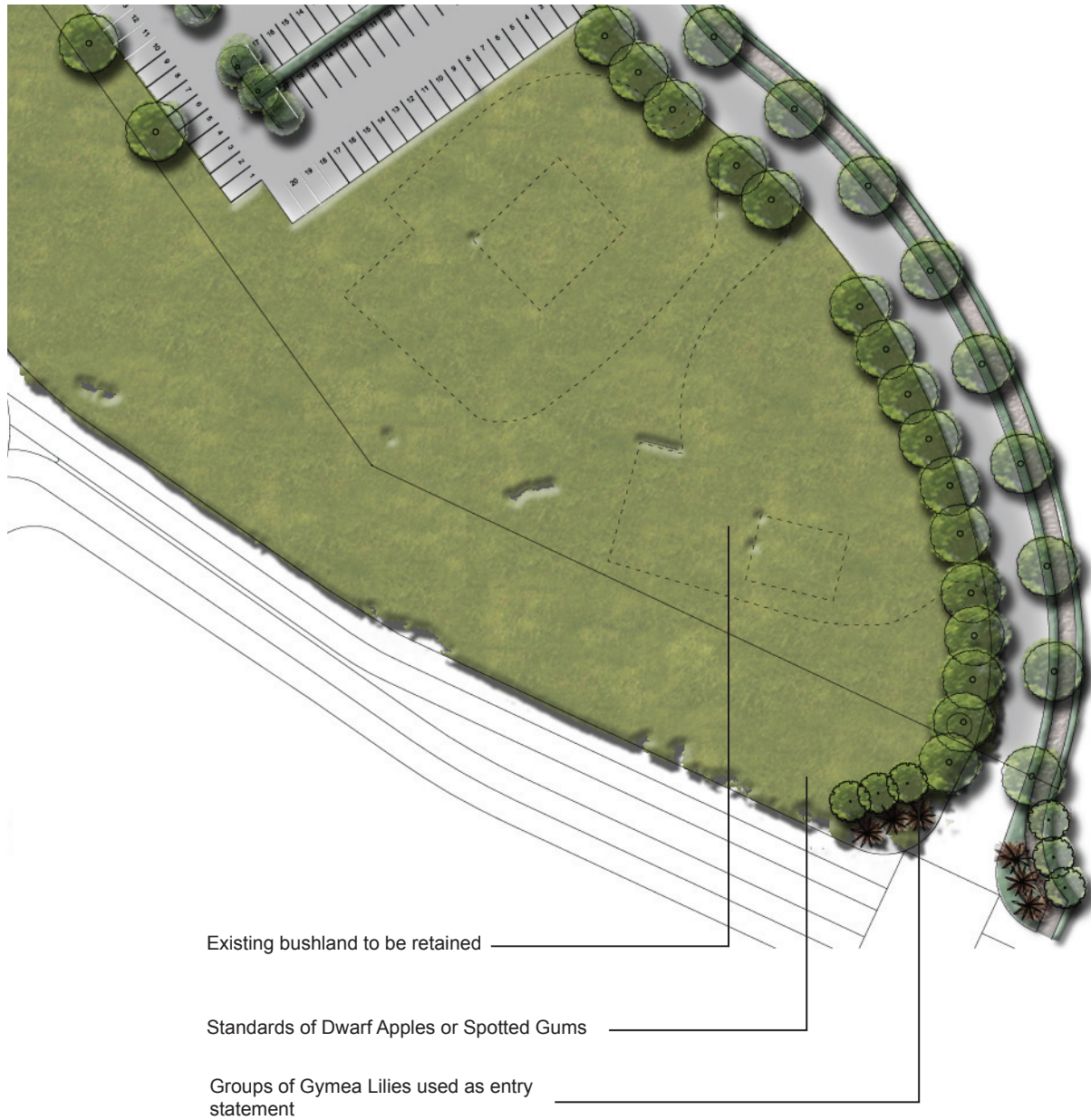


E. INDICATIVE SECTION - NTS



F. INDICATIVE SECTION - NTS

GATEWAY PLANTING & SOUTHERN ENTRANCE AT THE WOOL ROAD



A. PLAN - N.T.S



SITE IMAGE
Landscape Architects

VINCENTIA DISTRICT CENTRE

DETAILED PLANS & SECTIONS 3

Client
Architect
Site Image Job Number
Scale

Fabcot Pty Limited
Rice Daubney
SS10-2213
NTS

Drawing Number
Issue
Date

LA 08
D
23.03.2011