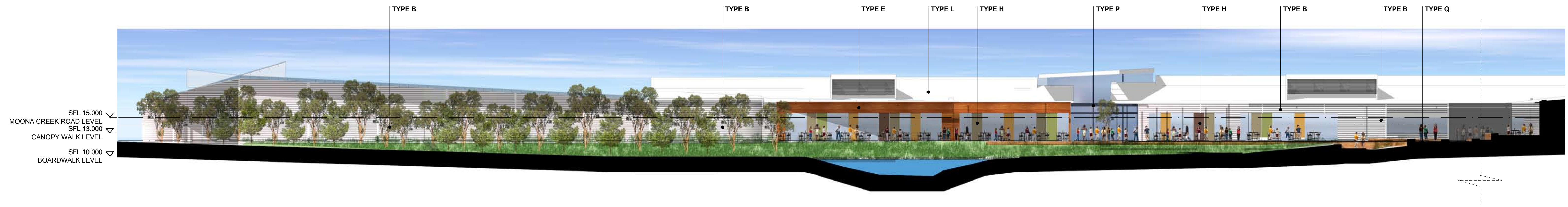


1 ELEVATION  
NORTH ELEVATION (FROM NORTH CAR PARK) 1:250



2 ELEVATION  
EAST ELEVATION (FROM BOARDWALK) 1:250

<div><div>C</div><div>B</div><div>A</div></div>			<div><div>23-03-10</div><div>01-04-10</div><div>15-01-08</div></div>	<div>DA MODIFICATION ISSUE</div> <div>PROJECT APPLICATION MODIFICATION</div> <div>DA SUBMISSION</div>	
No.	DATE	REVISION / ISSUE DETAILS			

CLIENT	ARCHITECTS
<div><div>Fabco</div></div>	<div><div><div>RICE DAUBNEY</div><div>ANALYSING CREATING AND IMPLEMENTING ARCHITECTURE</div></div><div><div>110 WALKER STREET   NORTH SYDNEY 2060</div><div>T: 02 9556 2666   F: 02 9559 3015</div><div>info@ricedaubney.com.au   www.ricedaubney.com.au</div><div>the rice daubney group (trw) Pty Ltd - abn: 77 001 350 769</div><div>rice daubney trading trust - abn: 56 880 504 993</div></div></div>

PROJECT
VINCENTIA DISTRICT CENTRE

DRAWING TITLE
FINISHES KEY ELEVATIONS - SHEET 1

SCALE: 1:250@A1, 1:500@A3	DATE: SEPTEMBER 09	CHECKED: SP
PROJECT NUMBER: 07033	DRAWING NUMBER: FS0001	REVISION: C

THIS DOCUMENT IS THE COPYRIGHT OF RICE DAUBNEY (NSW) PTY. LTD.

ALL INFORMATION ILLUSTRATED ON THIS DOCUMENT IS TO BE CHECKED AND VERIFIED ON SITE.

IN THE EVENT OF DISCREPANCIES REFER TO ARCHITECT PRIOR TO COMMENCEMENT OF THE WORK.

DO NOT SCALE DRAWINGS MANUALLY OR ELECTRONICALLY.