

**Appendix D**

Report Number 610.16722.00100

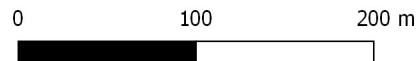
Page 1 of 1

**NOISE CONTOURS**



2 LINCOLN STREET  
 LANE COVE  
 NSW 2066  
 AUSTRALIA  
 T: +61 2 9427 6100  
 F: +61 2 0801  
 www.slrconsulting.com

Project No.:	610.16722.00100
Date:	03/11/2015
Drawn by:	YL
Scale:	1:4,256
Sheet Size:	@A4
Projection:	GDA 1994 MGA Zone 56



**Noise Contours**

- 40 dBA
- 45 dBA
- 50 dBA
- 55 dBA
- 60 dBA
- 65 dBA
- 70 dBA
- 75 dBA
- 80 dBA

**Legend**

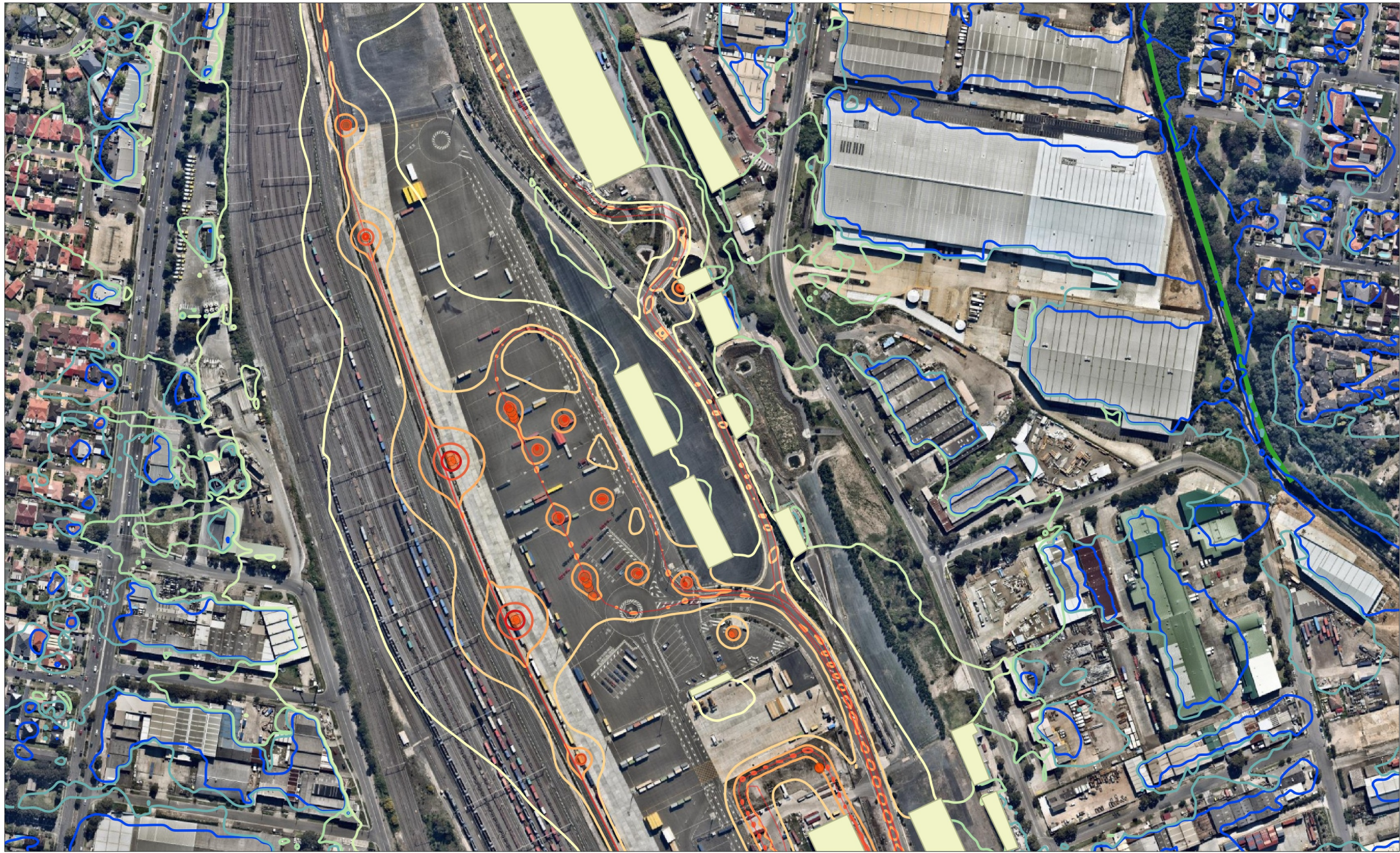
- Noise Barriers
- Noise Source
- Noise Source

NSW Port Pty Ltd

**Enfield Intermodal Logistics Centre**

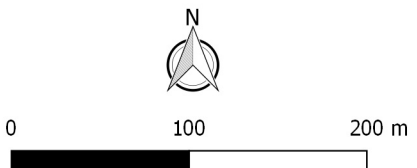
**MOD12 Operational Noise Assessment**  
 LAeq (15 min)  
 Daytime - Calm

The content contained within this document may be based on third party data. SLR Consulting Australia Pty Ltd does not guarantee the accuracy of such information.



**SLR**  
 2 LINCOLN STREET  
 LANE COVE  
 NSW 2066  
 AUSTRALIA  
 T: +61 2 9427 8100  
 F: +61 2 0801  
 www.slrconsulting.com

Project No.:	610.16722.00100
Date:	03/11/2015
Drawn by:	YL
Scale:	1:4,256
Sheet Size:	@A4
Projection:	GDA 1994 MGA Zone 56



**Noise Contours**

40 dBA	60 dBA
45 dBA	65 dBA
50 dBA	70 dBA
55 dBA	75 dBA
	80 dBA

**Legend**

Green line	Noise Barriers
Red line	Noise Source
Orange circle	Noise Source

NSW Port Pty Ltd  
**Enfield Intermodal Logistics Centre**  
 MOD12 Operational Noise Assessment  
 LAeq (15 min)  
 Daytime - Calm

The content contained within this document may be based on third party data. SLR Consulting Australia Pty Ltd does not guarantee the accuracy of such information.