

May 2009
307050

Settlement City^{REV A}

Shopping Centre Masterplan

PROJECT NUMBER:
307050

DRAWING TITLE:
PROPOSED STAGE 1 -
STAGING PLAN

DRAWING NUMBER:
ATP 900 [6]

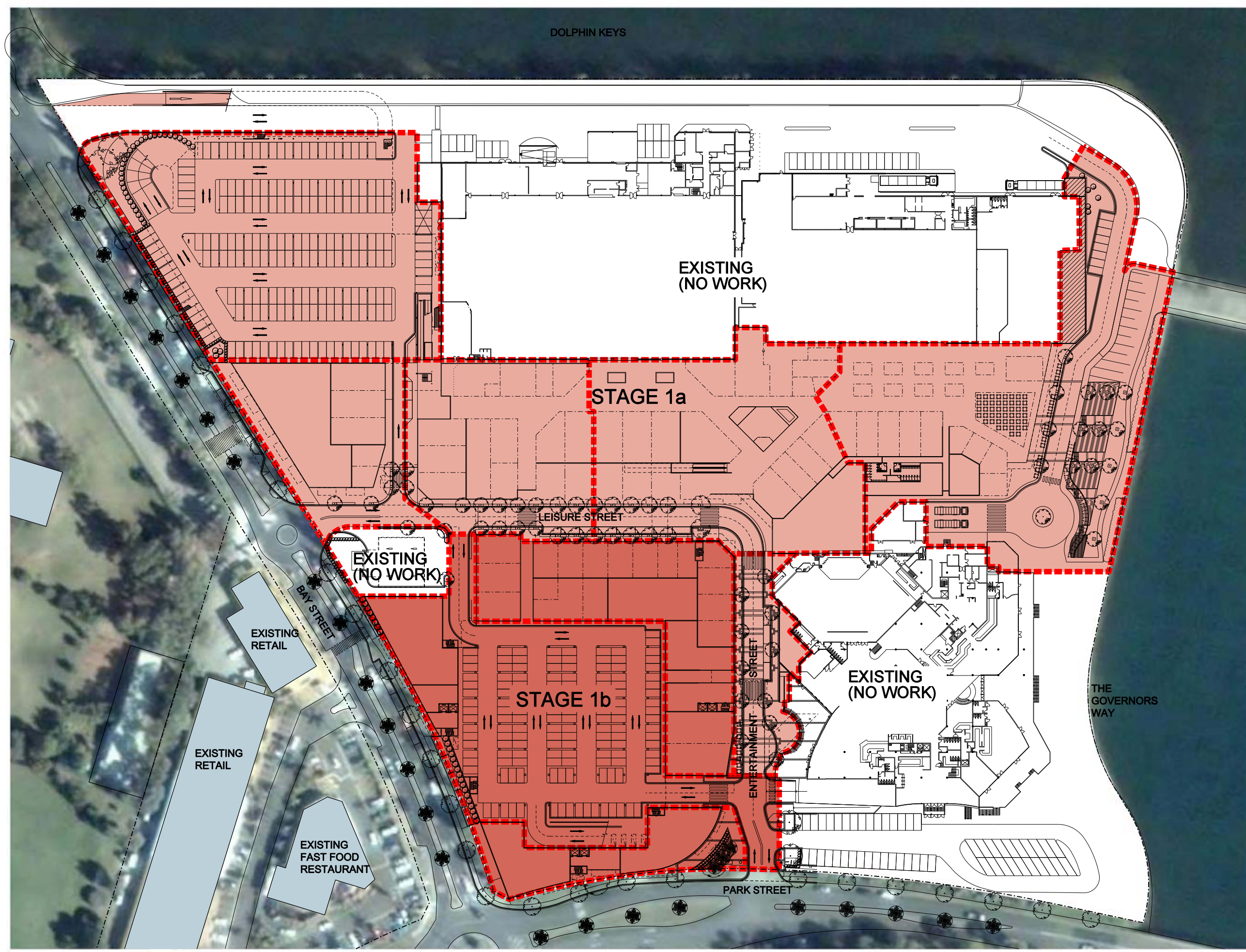
SCALE:
1:500@A1; 1:1000@A3

DATE:
JUNE 2009



THE BUCHAN GROUP

©The Buchan Group 2009. Copyright in this document and the concepts it represents are reserved to The Buchan Group - 2009. No unauthorised use or copying permitted. All rights reserved. Some of the incorporated images and concepts may be subject to third party copyright and/or moral rights.



PORT MACQUARIE SETTLEMENT CITY

Area Schedule - Stage 1

Project No. 307050

Revision No. 8

25/05/2009

Retailer	Area (GLFA) m ²			Carpark Requirements	
	Existing	Added	Total	Ratio	Required
Major Traders	10,871		10,871	5/100	544
Mini Majors/Large Specs	2,171	-1,175	996	5/100	50
Leisure/Gym/Health Spa		2,300	2,300	Shared Use	-
Sub-Total Majors	13,042	1,125	14,167		593
Stage 1 Specialty Retail*	5,941	4,994	10,935	5/100	547
Food - Restaurant		718	718	5/100	36
Food - Food Court	174	161	335	5/100	17
Sub-Total Specialties	6,115	5,873	11,988		599
Retail Showrooms		864	864	5/100	43
Overall Retail Total	19,157	7,862	27,019		1,236
Cinemas		3,523	3,523	Shared Use	-
Bowling		1,165	1,165	Shared Use	-
Commercial Suites		460	460	3/100	14
Commercial Bay Street		2,288	2,288	3/100	69
Total	19157	15298	34455		1,318
Panther's Club	11,214		11,214		129
Overall Total	30371	15298	45669		1,447

* Specialty Retail area includes new large format retail tenancies.

Carpark Numbers as Proposed	Existing	Added	Total
Existing Deck Carparking	699	114	813
On Grade Carparking	375	-330	45
New Carparking		541	541
Panther's Carparking	129		129
Overall Total	1,203	325	1,528

May 2009
307050

Settlement City
REV A
Shopping Centre Masterplan

PROJECT NUMBER:
307050

DRAWING TITLE:
PROPOSED STAGE 1 -
AREA SCHEDULE

DRAWING NUMBER:
ATP 910 [7]

SCALE:
N / A

DATE:
JUNE 2009



THE BUCHAN GROUP

©The Buchan Group 2009. Copyright in this document and the concepts it represents are reserved to The Buchan Group - 2009. No unauthorised use or copying permitted. All rights reserved. Some of the incorporated images and concepts may be subject to third party copyright and/or moral rights.

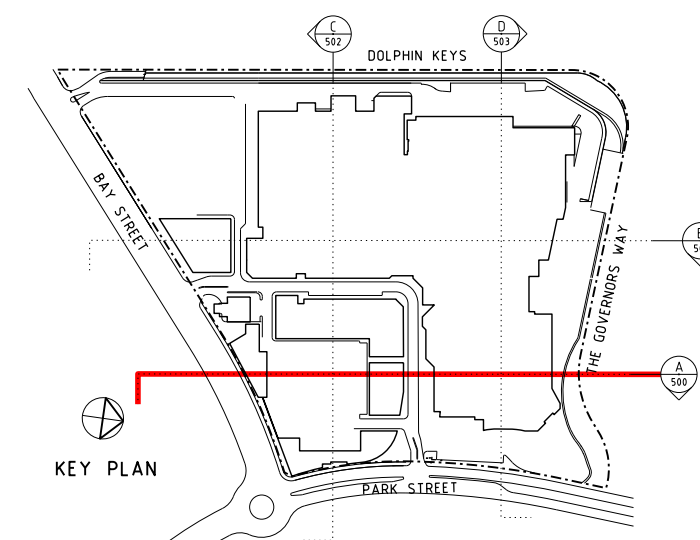
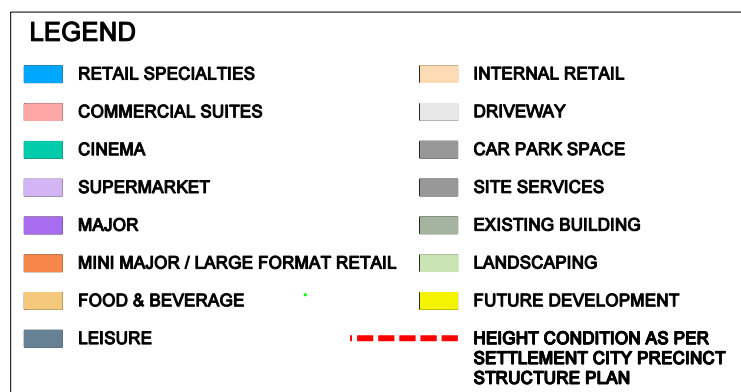
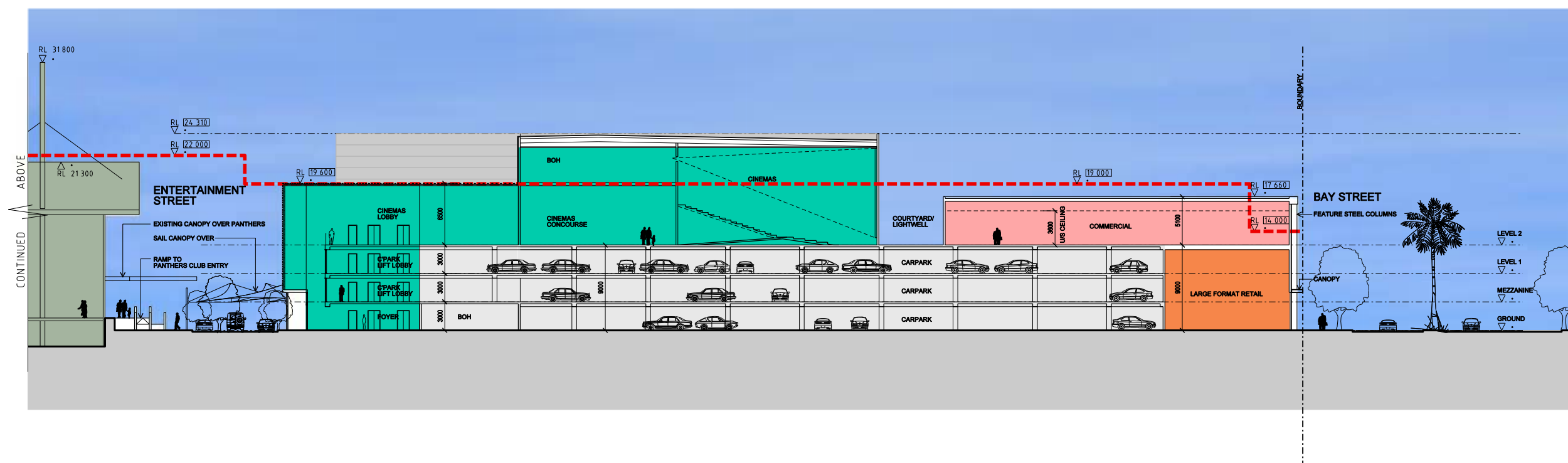
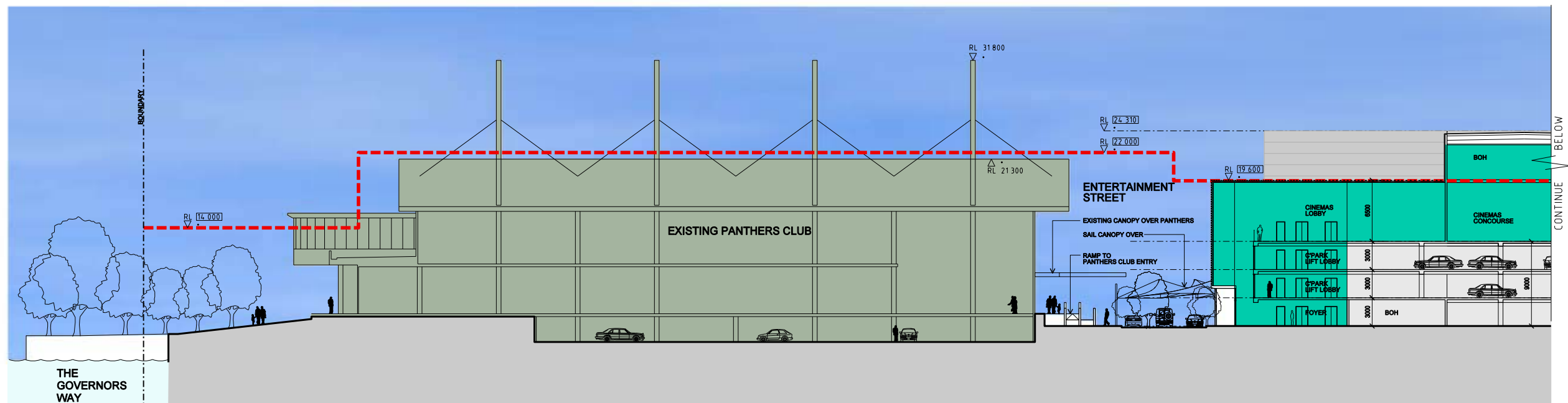
Settlement City^{REV A}

Shopping Centre Masterplan

DRAWING TITLE:
**PROPOSED STAGE 1 -
SECTION AA**



THE BUCHAN GROUP



May 2009
307050

Settlement City ^{REV A} Shopping Centre Masterplan

PROJECT NUMBER:
307050

DRAWING TITLE:
PROPOSED STAGE 1 -
SECTION BB

DRAWING NUMBER:
ATP 501 [3]

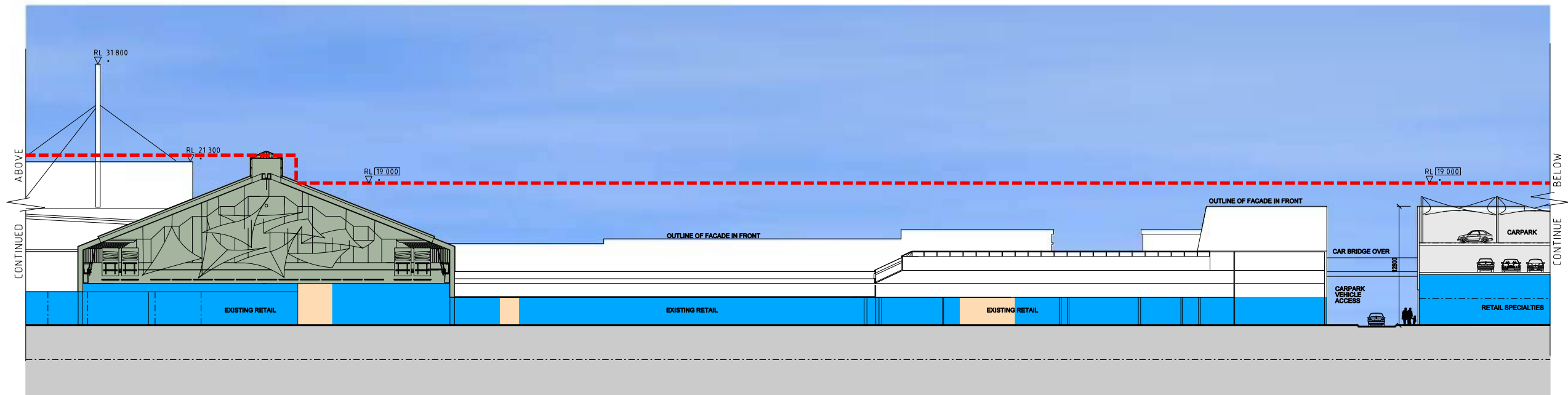
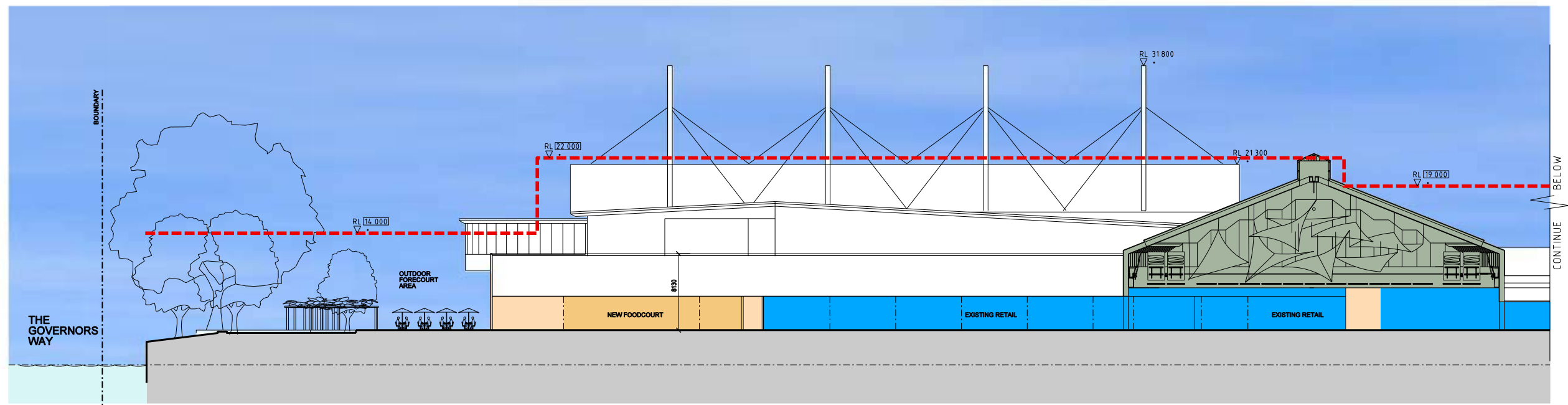
SCALE:
1:250@A1; 1:500@A3

DATE:
JUNE 2009

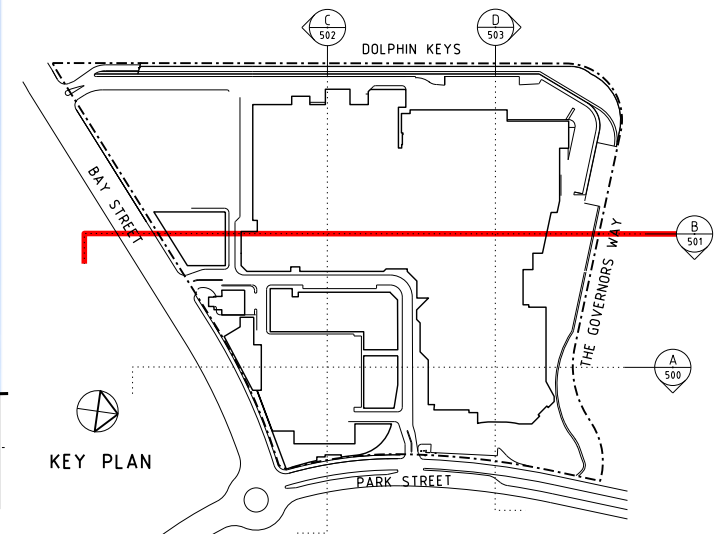
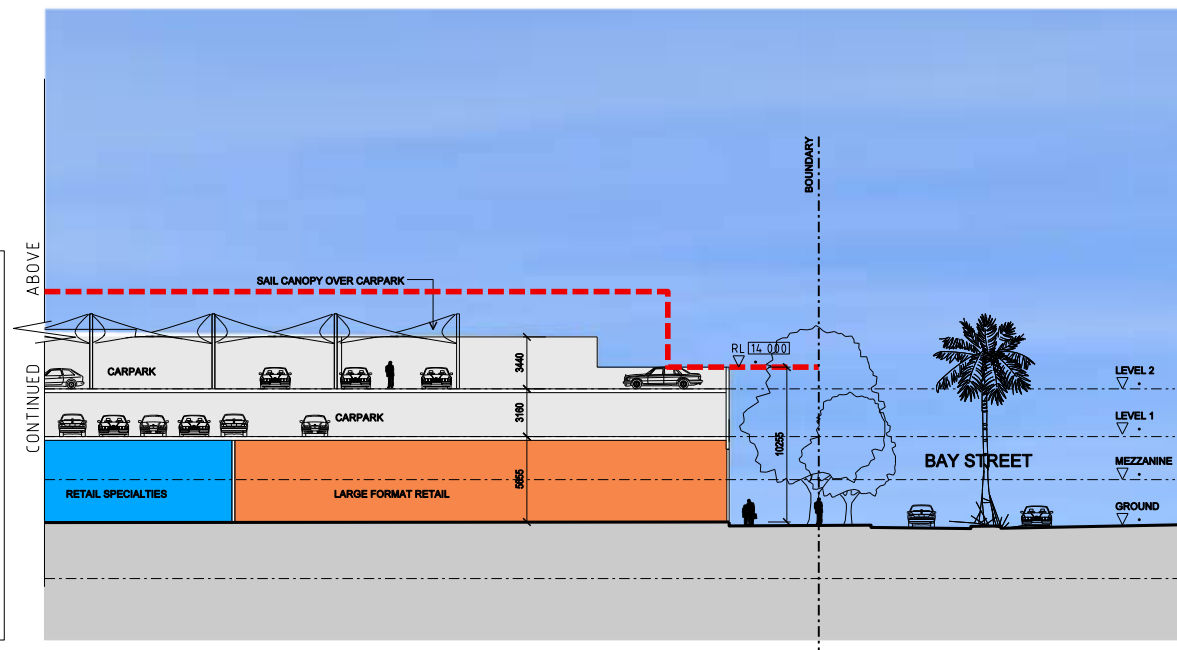


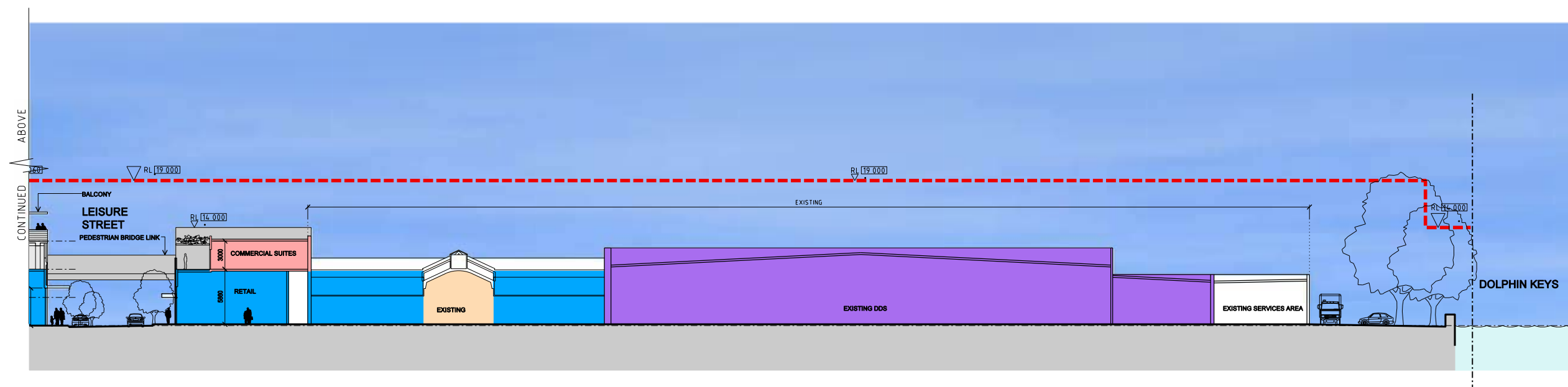
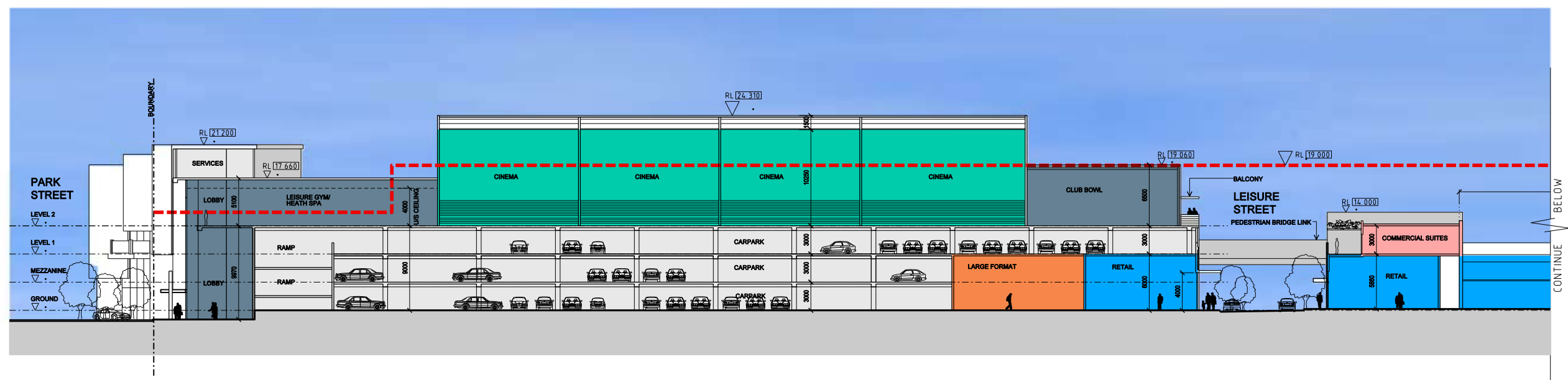
THE BUCHAN GROUP

©The Buchan Group 2009. Copyright in this document and the concepts it represents are reserved to The Buchan Group - 2009. No unauthorised use or copying permitted. All rights reserved. Some of the incorporated images and concepts may be subject to third party copyright and/or moral rights.



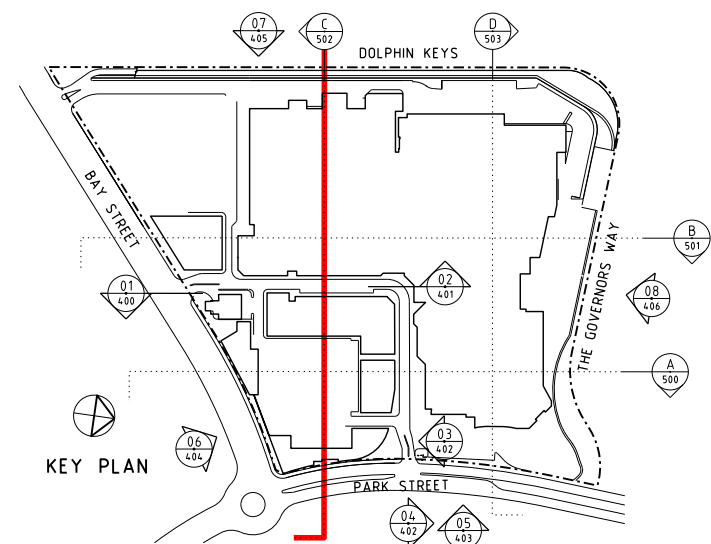
LEGEND			
■	RETAIL SPECIALTIES	■	INTERNAL RETAIL
■	COMMERCIAL SUITES	■	DRIVEWAY
■	CINEMA	■	CAR PARK SPACE
■	SUPERMARKET	■	SITE SERVICES
■	MAJOR	■	EXISTING BUILDING
■	MINI MAJOR / LARGE FORMAT RETAIL	■	LANDSCAPING
■	FOOD & BEVERAGE	■	FUTURE DEVELOPMENT
■	LEISURE	- - -	HEIGHT CONDITION AS PER SETTLEMENT CITY PRECINCT STRUCTURE PLAN





LEGEND

RETAIL SPECIALTIES	INTERNAL RETAIL
COMMERCIAL SUITES	DRIVEWAY
CINEMA	CAR PARK SPACE
SUPERMARKET	SITE SERVICES
MAJOR	EXISTING BUILDING
MINI MAJOR / LARGE FORMAT RETAIL	LANDSCAPING
FOOD & BEVERAGE	FUTURE DEVELOPMENT
LEISURE	HEIGHT CONDITION AS PER SETTLEMENT CITY PRECINCT STRUCTURE PLAN



May 2009
307050

Settlement City

Shopping Centre Masterplan

PROJECT NUMBER:
307050

DRAWING TITLE:
PROPOSED STAGE 1 -
SECTION CC

DRAWING NUMBER:
ATP 502 [4]

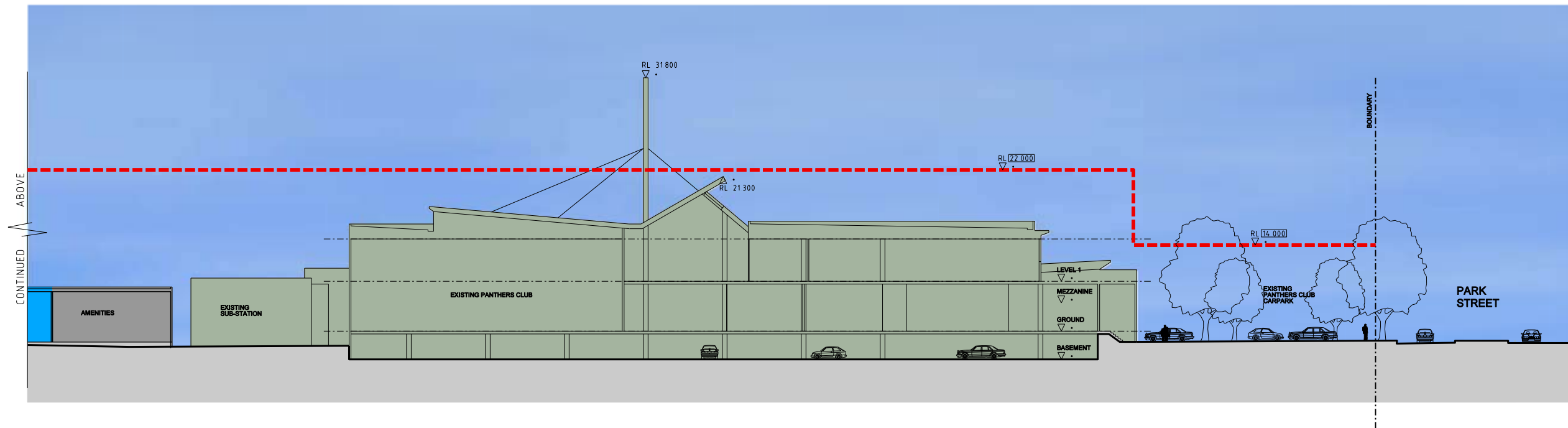
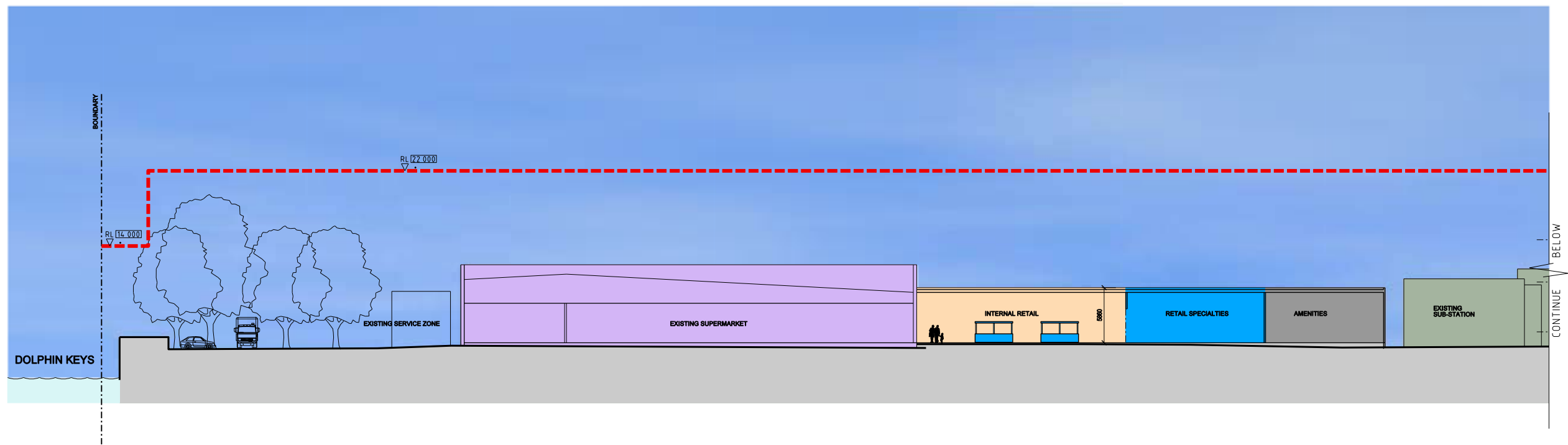
SCALE:
1:250@A1; 1:500@A3

DATE:
JUNE 2009



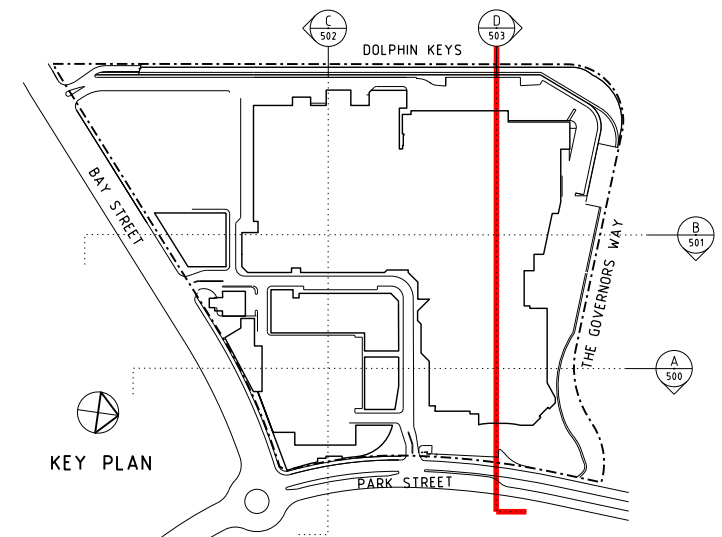
THE BUCHAN GROUP

©The Buchan Group 2009. Copyright in this document and the concepts it represents are reserved to The Buchan Group - 2009. No unauthorised use or copying permitted. All rights reserved. Some of the incorporated images and concepts may be subject to third party copyright and/or moral rights.



LEGEND

RETAIL SPECIALTIES	INTERNAL RETAIL
COMMERCIAL SUITES	DRIVEWAY
CINEMA	CAR PARK SPACE
SUPERMARKET	SITE SERVICES
MAJOR	EXISTING BUILDING
MINI MAJOR / LARGE FORMAT RETAIL	LANDSCAPING
FOOD & BEVERAGE	FUTURE DEVELOPMENT
LEISURE	HEIGHT CONDITION AS PER SETTLEMENT CITY PRECINCT STRUCTURE PLAN



May 2009
307050

Settlement City Shopping Centre Masterplan

PROJECT NUMBER:
307050

DRAWING TITLE:
PROPOSED STAGE 1 -
SECTION DD

DRAWING NUMBER:
ATP 503 [3]

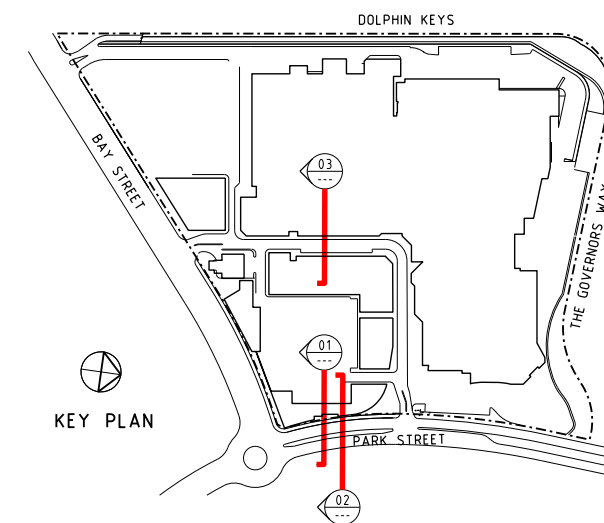
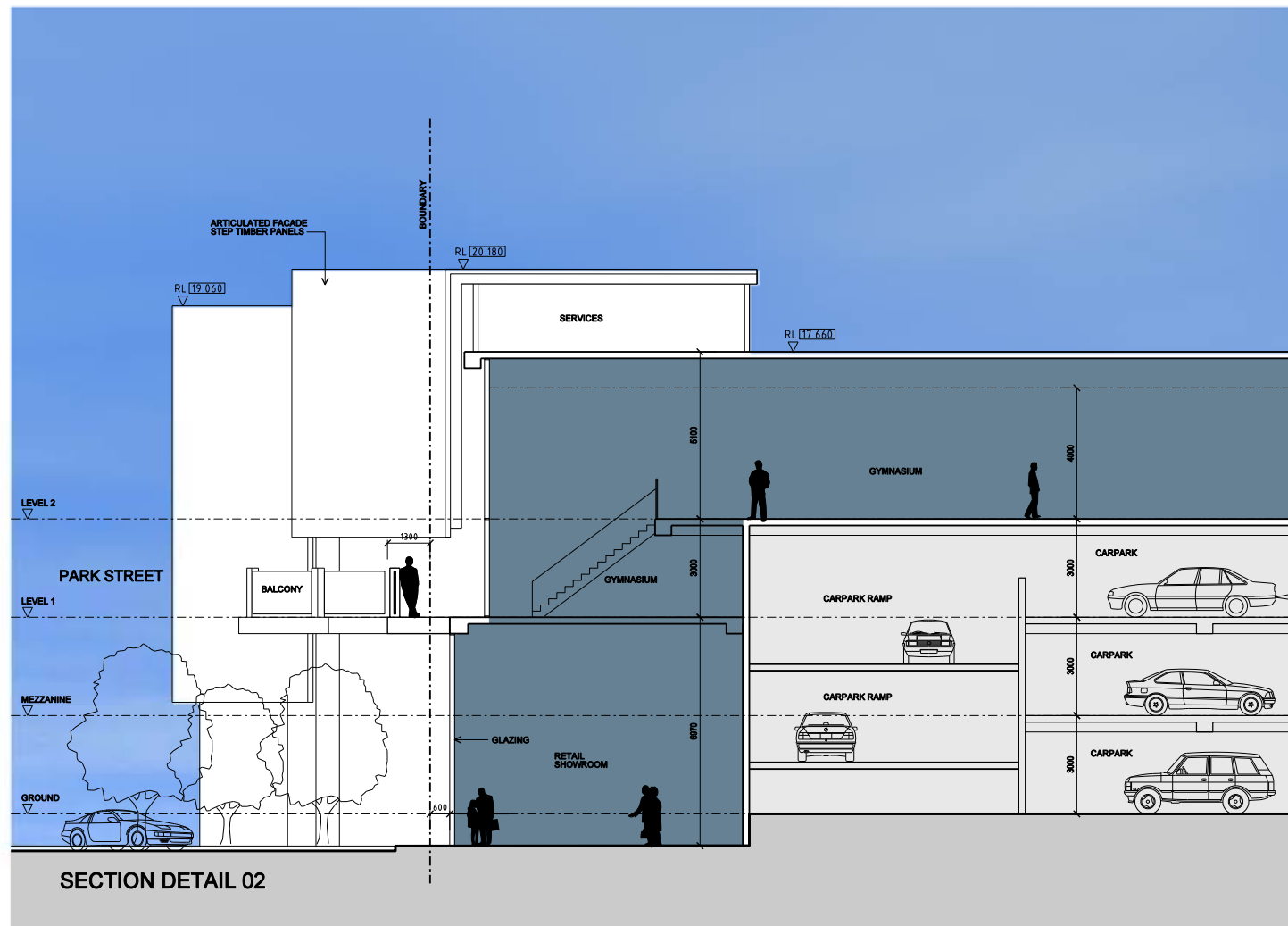
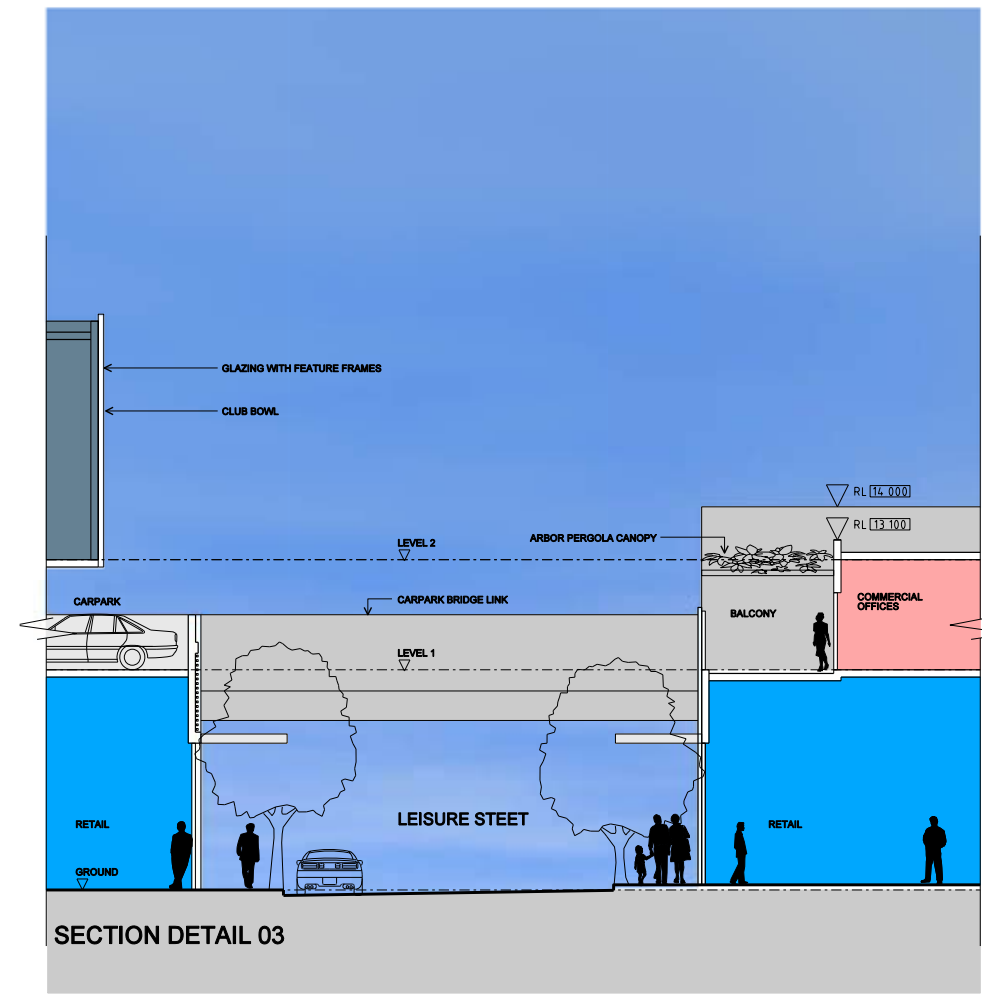
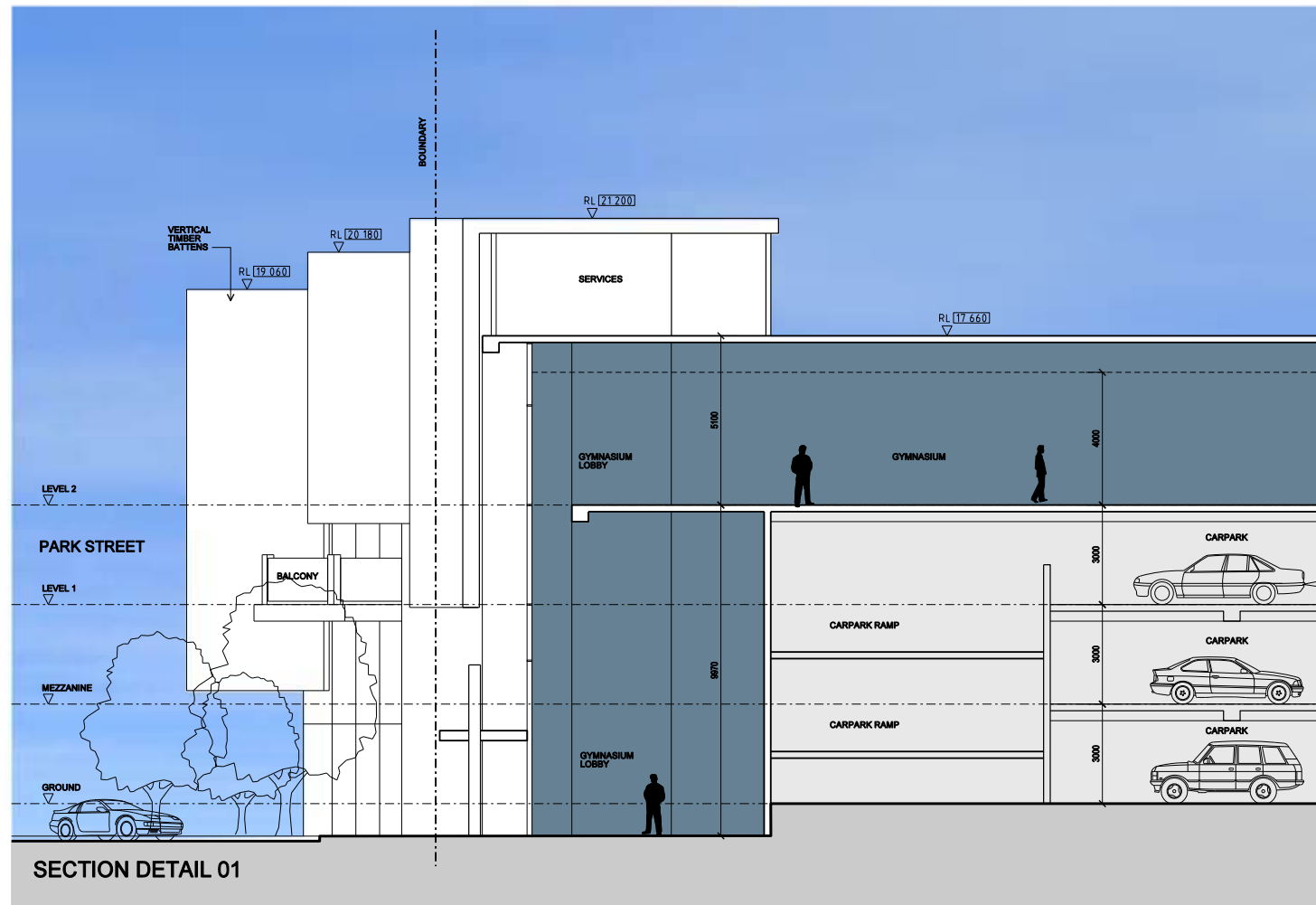
SCALE:
1:250@A1; 1:500@A3

DATE:
JUNE 2009



THE BUCHAN GROUP

©The Buchan Group 2009. Copyright in this document and the concepts it represents are reserved to The Buchan Group - 2009. No unauthorised use or copying permitted. All rights reserved. Some of the incorporated images and concepts may be subject to third party copyright and/or moral rights.



May 2009
307050

Settlement City^{REV A}

Shopping Centre Masterplan

PROJECT NUMBER:
307050

DRAWING TITLE:
PROPOSED STAGE 1 -
DETAIL SECTIONS

DRAWING NUMBER:
ATP 505 [2]

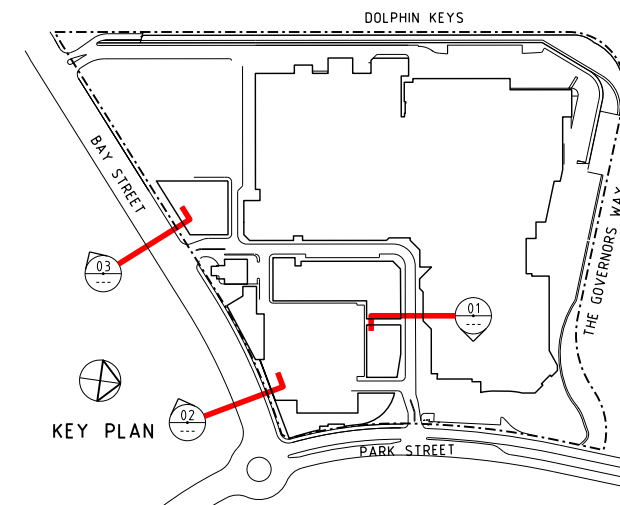
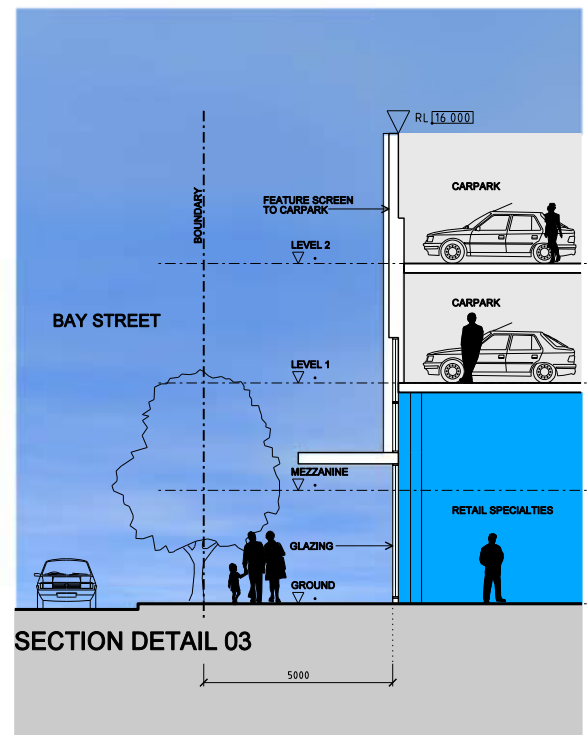
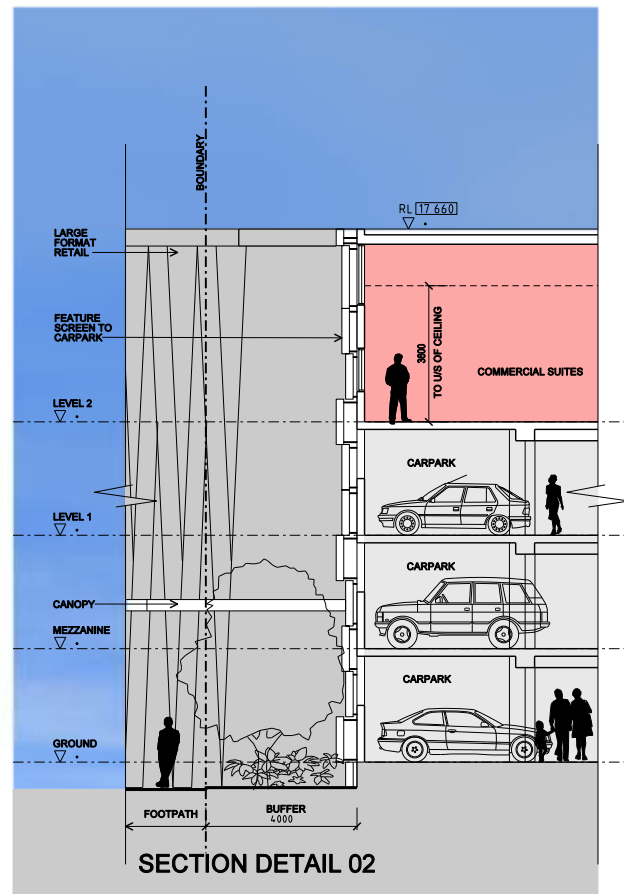
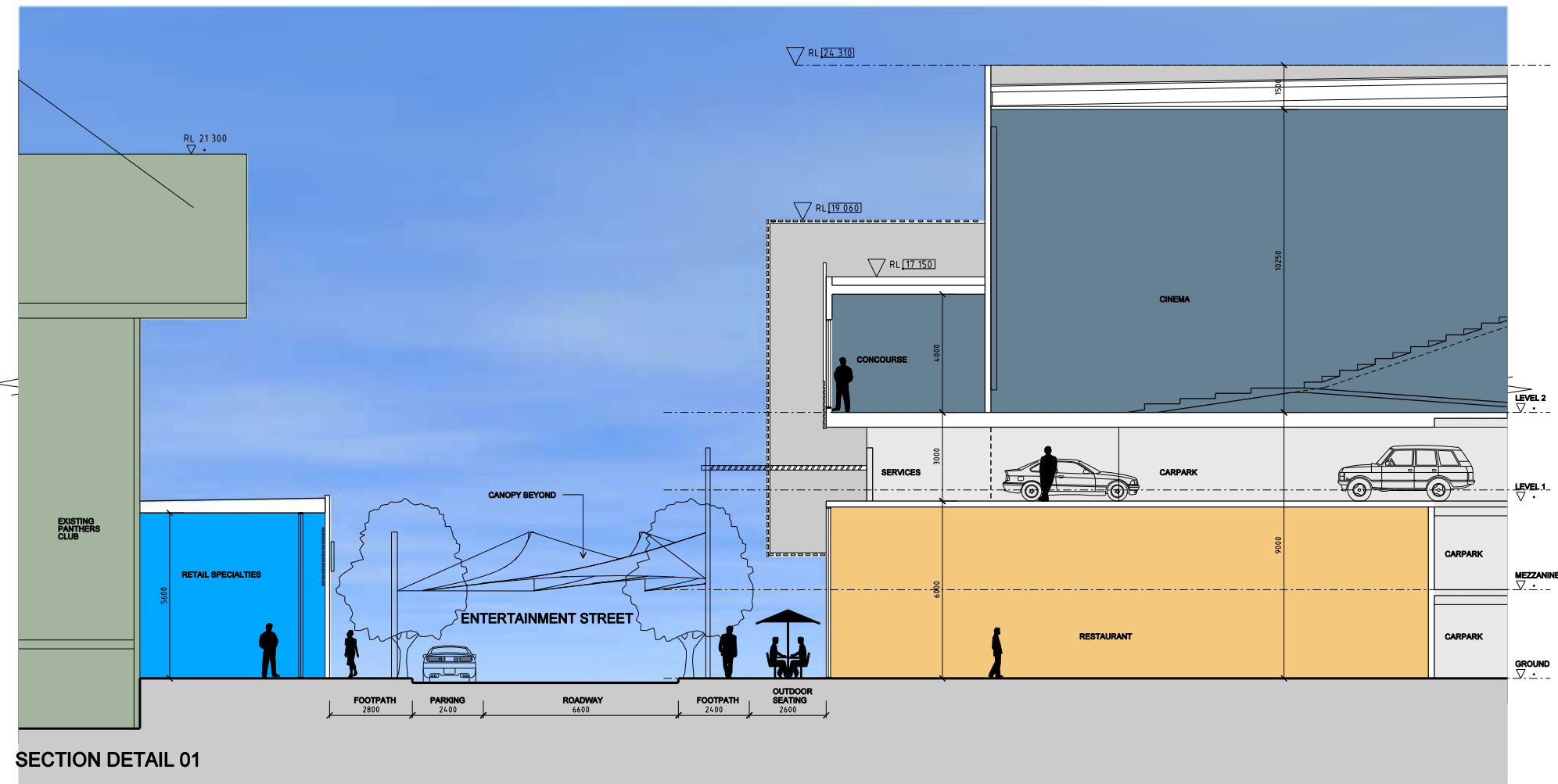
SCALE:
1:100@A1; 1:200@A3

DATE:
JUNE 2009



THE BUCHAN GROUP

©The Buchan Group 2009. Copyright in this document and the concepts it represents are reserved to The Buchan Group - 2009. No unauthorised use or copying permitted. All rights reserved. Some of the incorporated images and concepts may be subject to third party copyright and/or moral rights.



May 2009
307050

Settlement City^{REV A}

Shopping Centre Masterplan

PROJECT NUMBER:
307050

DRAWING TITLE:
PROPOSED STAGE 1 -
DETAIL SECTIONS

DRAWING NUMBER:
ATP 506 [2]

SCALE:
1:100@A1; 1:200@A3

DATE:
JUNE 2009



THE BUCHAN GROUP

©The Buchan Group 2009. Copyright in this document and the concepts it represents are reserved to The Buchan Group - 2009. No unauthorised use or copying permitted. All rights reserved. Some of the incorporated images and concepts may be subject to third party copyright and/or moral rights.



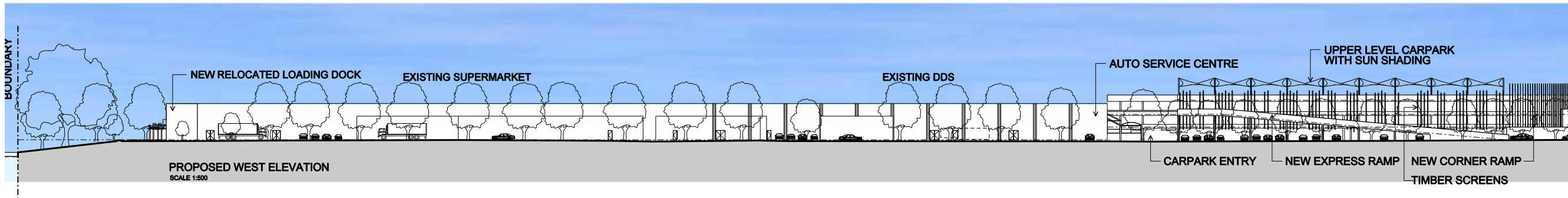
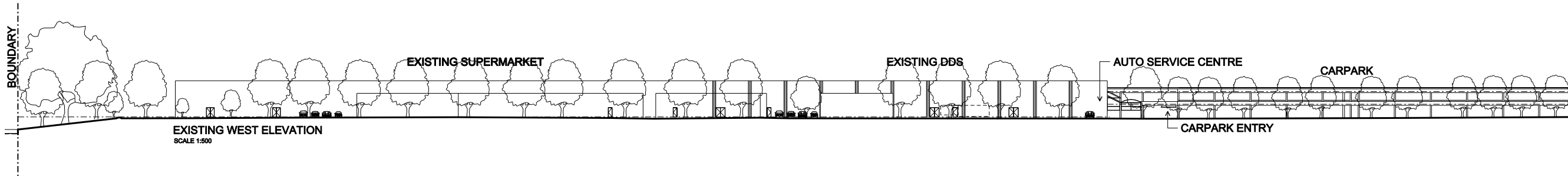
EXISTING NORTHERN LOADING ZONE



EXISTING LOADING/CARPARK BEHIND DDS



VIEW TO EXISTING CARPARK
FROM CORNER OF BAY STREET & DOLPHIN KEYS



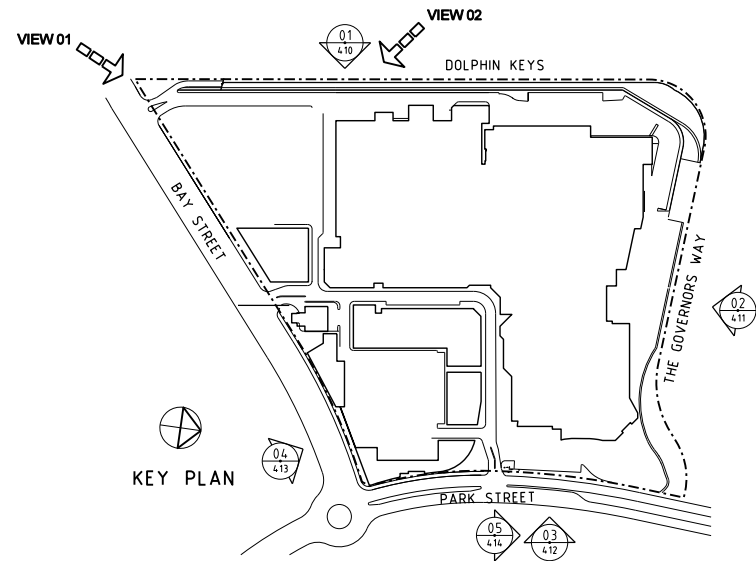
ARTIST PERSPECTIVE SHOWING PROPOSED ELEVATIONAL TREATMENT



VIEW 01



VIEW 02



PRELIMINARY

May 2009
307050

Settlement City^{REV A}

Shopping Centre Masterplan

PROJECT NUMBER:
307050

DRAWING TITLE:
COMPARISON
ELEVATION 01

DRAWING NUMBER:
ATP 410

SCALE:
1:500 @ A1

DATE:
JUNE 2009



THE BUCHAN GROUP

©The Buchan Group 2009. Copyright in this document and the concepts it represents are reserved to The Buchan Group - 2009. No unauthorised use or copying permitted. All rights reserved. Some of the incorporated images and concepts may be subject to third party copyright and/or moral rights.



VIEW ACROSS GOVERNORS WAY



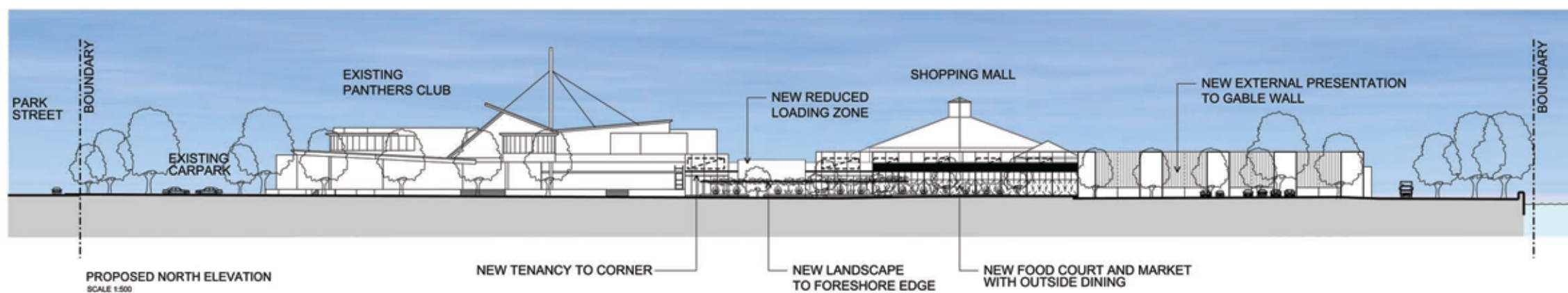
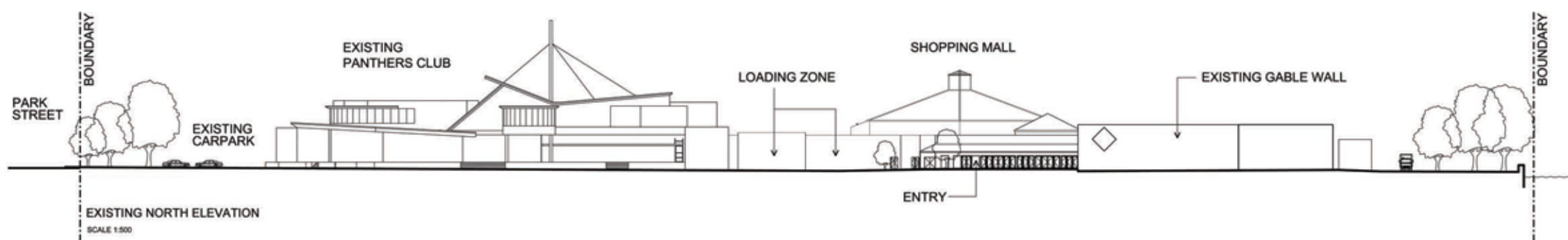
VIEW TOWARDS NORTHERN END OF EXISTING MALL



VIEW LOOKING EAST ALONG EXISTING EMBANKMENT



EXISTING LOADING ZONE



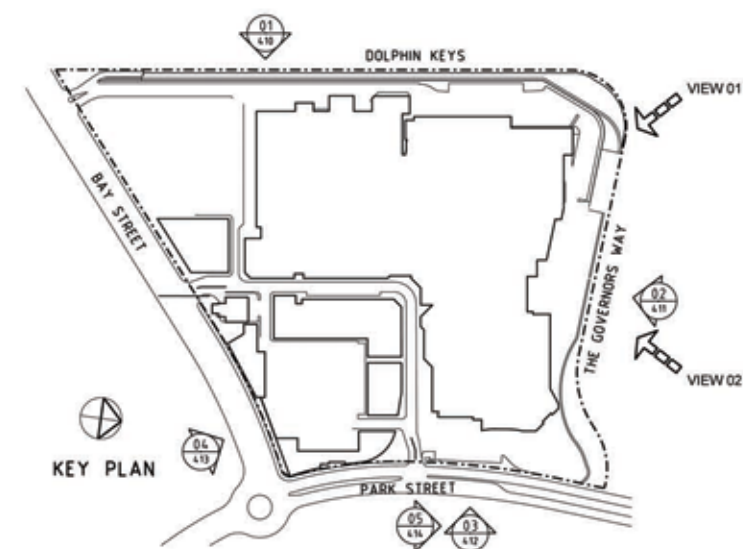
ARTIST PERSPECTIVE SHOWING PROPOSED ELEVATIONAL TREATMENT



VIEW 01



VIEW 02



PROJECT NUMBER:
307050

DRAWING TITLE:
COMPARISON
ELEVATION 02

DRAWING NUMBER:
ATP 411

SCALE:
1:500 @ A1

DATE:
JUNE 2009



THE BUCHAN GROUP

©The Buchan Group 2009. Copyright in this document and the concepts it represents are reserved to The Buchan Group - 2009. No unauthorised use or copying permitted. All rights reserved. Some of the incorporated images and concepts may be subject to third party copyright and/or moral rights.

May 2009
307050

Settlement City
REV A
Shopping Centre Masterplan



VIEW TOWARDS EXISTING CARPARK ENTRY



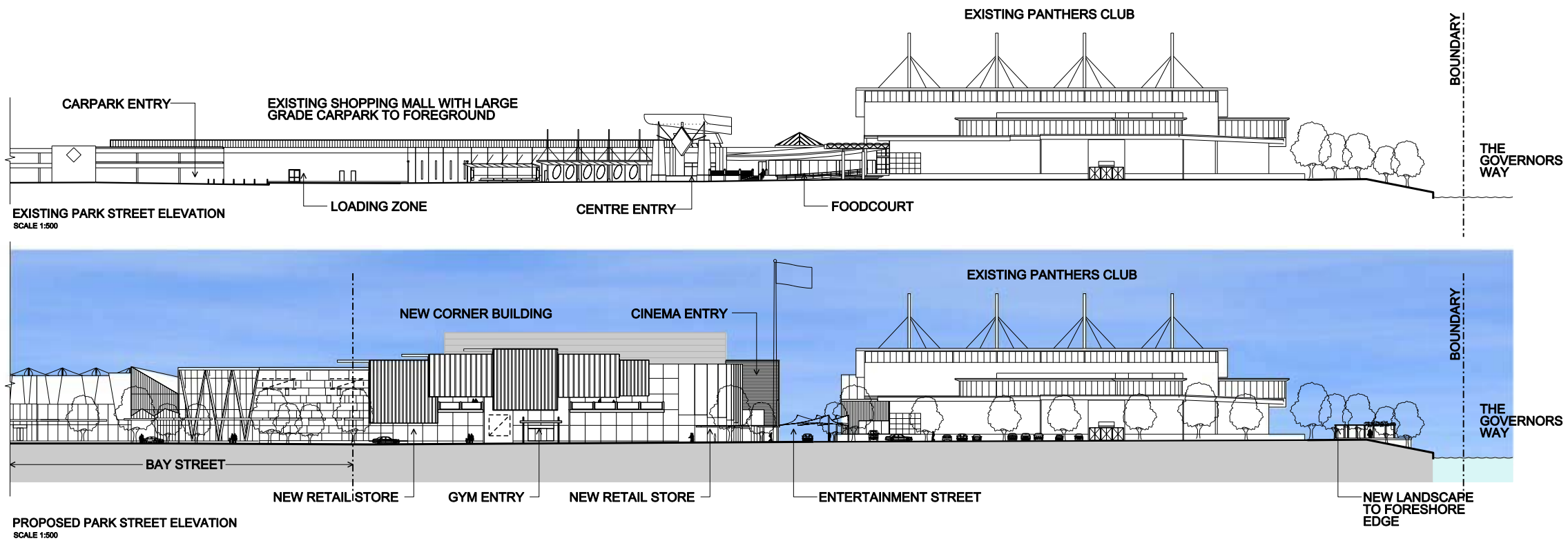
VIEW TOWARDS JUNCTION OF PARK STREET & BAY STREET



VIEW TOWARD PANTHERS CLUB FROM PARK STREET



VIEW FROM PARK STREET TOWARDS SHOPPING CENTRE ENTRY



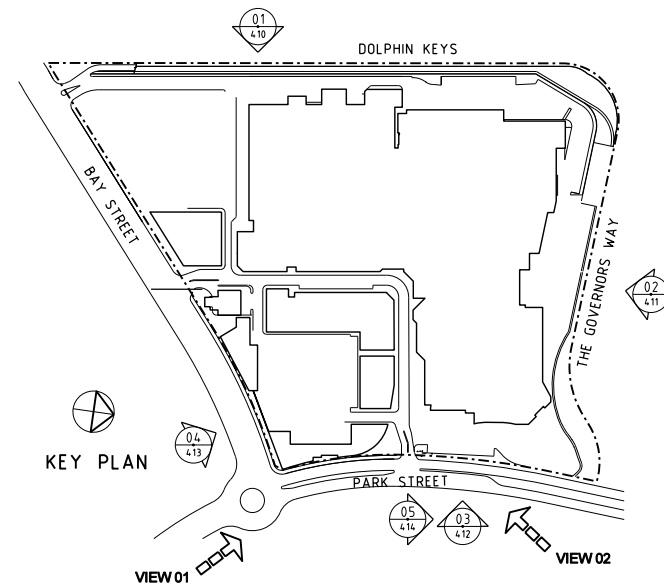
ARTIST PERSPECTIVE SHOWING PROPOSED ELEVATIONAL TREATMENT



VIEW 01



VIEW 02



May 2009
307050

Settlement City^{REV A}

Shopping Centre Masterplan

PROJECT NUMBER:
307050

DRAWING TITLE:
COMPARISON
ELEVATION 03

DRAWING NUMBER:
ATP 412

SCALE:
1:500 @ A1

DATE:
JUNE 2009



THE BUCHAN GROUP

©The Buchan Group 2009. Copyright in this document and the concepts it represents are reserved to The Buchan Group - 2009. No unauthorised use or copying permitted. All rights reserved. Some of the incorporated images and concepts may be subject to third party copyright and/or moral rights.



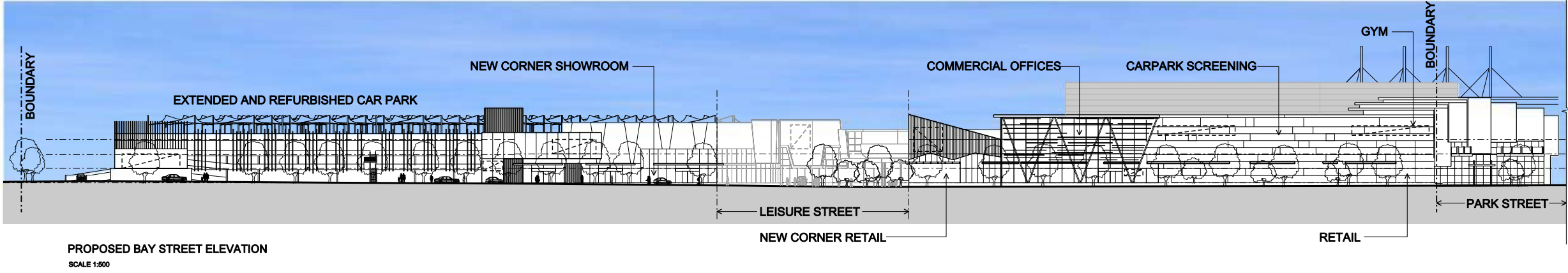
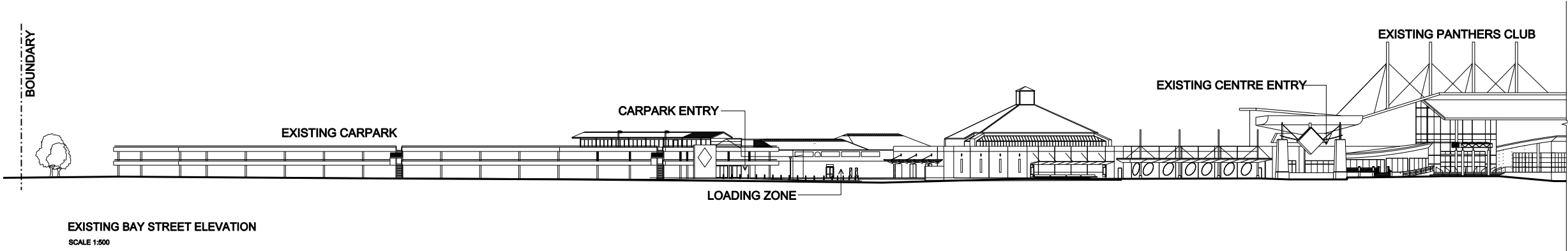
VIEW TOWARDS EXISTING CARPARK



VIEW TOWARDS SHOPPING CENTRE ENTRY



VIEW TOWARDS SHOPPING CENTRE



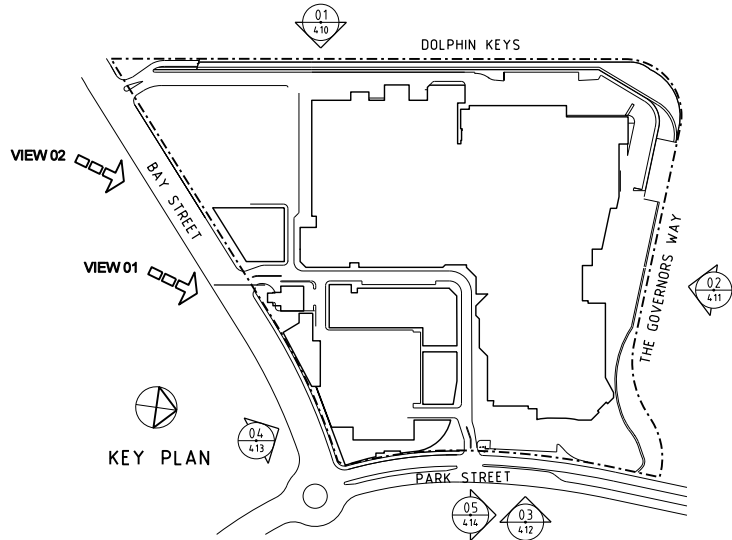
ARTIST PERSPECTIVE SHOWING PROPOSED ELEVATIONAL TREATMENT



VIEW 01



VIEW 02



May 2009
307050

Settlement City

Shopping Centre Masterplan

PROJECT NUMBER:
307050

DRAWING TITLE:
COMPARISON
ELEVATION 04

DRAWING NUMBER:
ATP 413

SCALE:
1:500 @ A1

DATE:
JUNE 2009



THE BUCHAN GROUP

©The Buchan Group 2009. Copyright in this document and the concepts it represents are reserved to The Buchan Group - 2009. No unauthorised use or copying permitted. All rights reserved. Some of the incorporated images and concepts may be subject to third party copyright and/or moral rights.