

Notice of Modification

Section 75W of the *Environmental Planning and Assessment Act 1979*

As delegate for the Minister for Planning, the Independent Planning Commission modifies the Project Approval referred to in Schedule 1, subject to the conditions in Schedule 2.

Member of Commission

Member of Commission

Member of Commission

Sydney

2019

SCHEDULE 1

Project Approval 08_0135 for the Moolarben Coal Project Stage 2, granted by the Minister for Planning on 30 January 2015

SCHEDULE 2

1. In the list of DEFINITIONS, delete “CLD”, “DPI Water”, “DRE” and “Secretary Industry” and insert the following in alphabetical order:

ANZECC Guideline	Australian and New Zealand Guidelines for Fresh and Marine Water Quality (Australian and New Zealand Environment and Conservation Council and Australian and New Zealand Environment and Conservation Council, October 2000)
BC Act	<i>Biodiversity Conservation Act 2016</i>
BCT	NSW Biodiversity Conservation Trust
Dol Lands and Water	Department of Industry Lands and Water Division
DRG	Division of Resources and Geosciences and the Resources Regulator, within the Department
NRAR	Natural Resources Access Regulator
2. In the definition of “EA”,
 - after “(MOD 1);” delete “and”; and
 - delete “(MOD 2). and insert
“;and
 - Environmental Assessment – Open Cut Optimisation Modification, Volumes 1 and 2, dated November 2017, the associated response to submissions dated May 2018, and supplementary information dated 24 August 2018 (MOD 3).
3. Delete all references to:
 - (a) “CLD” and “DPI Water”, and replace with “Dol Lands and Water”;
 - (b) “DRE”, and replace with “DRG”; and
 - (c) “Industrial Noise Policy”, and replace with “Noise Policy for Industry”.
4. In condition 7 of Schedule 2:
 - (a) in condition 7(a), delete “12” and replace with “16”; and
 - (b) in the Notes to condition 7, delete:
 - (i) “21” and replace with “24”;
 - (ii) “13” and replace with “16”; and
 - (iii) “18” and replace with “22”.

5. Delete conditions 1 and 2 of Schedule 3, and insert:

Acquisition on Request

1. (deleted)

Note: the Proponent has acquired all properties provided acquisition on request rights under this approval.

Mitigation Upon Request

2. (deleted)

Note: the Proponent has acquired all properties provided mitigation upon request rights under this approval.

6. In condition 3 of Schedule 3, in Table 1, delete Land numbers 30 and 31.

7. In condition 18 of Schedule 3, in Table 8:
(a) delete “30 µg/m³”, and replace with “^d 25 µg/m³”; and
(b) insert the following row:

Particulate Matter <2.5 µm (PM _{2.5})	Annual	^{a, d} 8 µg/m ³
---	--------	-------------------------------------

8. In condition 18 of Schedule 3, in Table 9, add the following row:

Particulate Matter <2.5 µm (PM _{2.5})	24 hour	^b 25 µg/m ³
---	---------	-----------------------------------

9. In condition 18 of Schedule 3, in “Notes to Tables 8-10”, in note b, delete “,”, and insert “with up to 5 allowable exceedances over the life of the project,”

10. In condition 20 in Schedule 3, in Table 11:
(a) delete “30 µg/m³”, and replace with “^d 25 µg/m³”; and
(b) insert the following row:

Particulate Matter <2.5 µm (PM _{2.5})	Annual	^{a, d} 8 µg/m ³
---	--------	-------------------------------------

11. In condition 18 in Schedule 3, in Table 9, add the following row:

Particulate Matter <2.5 µm (PM _{2.5})	24 hour	^b 25 µg/m ³	Increment ^b
---	---------	-----------------------------------	------------------------

12. In condition 20 of Schedule 3, in “Notes to Tables 11-13”, in note b, delete “,”, and insert “with up to 5 allowable exceedances over the life of the project,”.

13. In condition 21 of Schedule 3, delete “dust emissions”, and replace with “particulate matter (including PM₁₀ and PM_{2.5})”.

14. In condition 29 of Schedule 3:
(a) In condition 29(a), after “Dol Lands and Water” insert “, NRAR”;
(b) In condition 29(e)(iii), after “mine-induced changes”, insert
- brine emplacement in underground workings and potential changes to groundwater and surface water quality;”; and
(c) In condition 29(e)(iv), after “co-ordinate water quality”, insert “and flow”.

15. In condition 34 of Schedule 3, in the Note to Table 12, delete “TSC Act” and replace with “BC Act”.

16. In condition 4 of Schedule 4, delete “the Secretary Industry”, and replace with “DRG”.

17. Appendix 1, delete the land schedule table and replace with the following table:

Lot and Deposited Plan Number	Tenure Type
Lot 1 DP1023568	Freehold
Lot 1 DP755454	Freehold
Pt Lot 1 DP803204	Freehold
Lot 1 DP817487	Freehold
Lot 105 DP755454	Freehold
Pt Lot 107 DP755454	Freehold
Lot 11 DP1152406	Freehold
Pt Lot 110 DP755442	Freehold
Lot 112 DP755454	Freehold
Lot 113 DP755454	Freehold
Lot 119 DP755442	Freehold
Pt Lot 192 DP755442	Freehold
Pt Lot 193 DP755442	Freehold
Lot 2 DP1023568	Freehold
Pt Lot 2 DP1143354	Freehold
Lot 2 DP755454	Freehold
Lot 2 DP878678	Freehold
Lot 21 DP755454	Freehold
Pt Lot 218 DP755442	Freehold
Lot 223 DP755442	Freehold
Pt Lot 228 DP755442	Freehold
Pt Lot 229 DP755442	Freehold
Lot 234 DP755442	Freehold
Pt Lot 238 DP755442	Freehold
Lot 262 DP755442	Freehold
Lot 3 DP878678	Freehold
Lot 32 DP755454	Freehold
Lot 33 DP755454	Freehold
Lot 34 DP755454	Freehold
Pt Lot 36 DP755442	Freehold
Lot 36 DP755454	Freehold
Pt Lot 37 DP755442	Freehold
Lot 4 DP755454	Freehold
Lot 4 DP878678	Freehold
Lot 41 DP755454	Freehold
Lot 42 DP755454	Freehold
Lot 44 DP755442	Freehold
Lot 5 DP878678	Freehold
Lot 53 DP755454	Freehold
Lot 57 DP755454	Freehold
Lot 58 DP755454	Freehold

Lot and Deposited Plan Number	Tenure Type
Lot 6 DP878678	Freehold
Lot 60 DP755442	Freehold
Lot 61 DP755442	Freehold
Lot 61 DP755454	Freehold
Lot 62 DP755454	Freehold
Lot 7 DP755454	Freehold
Lot 7 DP878678	Freehold
Lot 76 DP755454	Freehold
Lot 8 DP755454	Freehold
Lot 82 DP755454	Freehold
Lot 85 DP755454	Freehold
Lot 86 DP755454	Freehold
Lot 90 DP755454	Freehold
Lot 91 DP755454	Freehold
Lot 92 DP755454	Freehold
Lot 93 DP755442	Freehold
Lot 93 DP755454	Freehold
Lot 95 DP755442	Freehold
Lot 96 DP755454	Freehold
Lot 97 DP755454	Freehold
Lot 99 DP755454	Freehold
Pt Lot 3 DP115031	Freehold
Lot 91 DP755442	Freehold
Lot 242 DP755442	Freehold
Pt Lot 7 DP755442	Freehold
Lot 95 DP755454	Freehold
Lot 79 DP755454	Freehold
Pt Lot 6 DP206588	Freehold
Pt Lot 68 DP755454	Freehold
Pt Lot 4 DP206588	Freehold
Pt Lot 7010 DP1025345	Crown
Lot 54 DP755454	Freehold
Pt Lot 92 DP755442	Freehold
Pt Lot 67 DP755454	Freehold
Lot 28 DP755454	Freehold
Lot 80 DP755454	Freehold
Lot 65 DP755454	Freehold
Lot 277 DP755442	Freehold
Pt Lot 2 DP206588	Freehold
Lot 77 DP755454	Freehold
Pt Lot 5 DP206588	Freehold
Lot 120 DP724656	Freehold
Lot 117 DP705226	Freehold

Lot and Deposited Plan Number	Tenure Type
Pt Lot 12 DP755454	Freehold
Lot 78 DP755454	Freehold
Pt Lot 3 DP206588	Freehold
Pt Lot 52 DP755454	Freehold
Lot 40 DP755454	Freehold
Lot 38 DP755454	Freehold
Lot 253 DP755442	Freehold
Lot 71 DP755454	Freehold
Lot 63 DP755454	Freehold
Lot 272 DP755442	Freehold
Lot 74 DP755454	Freehold
Lot 75 DP755454	Freehold
Pt Lot 69 DP755454	Freehold
Pt Lot 122 DP724655	Freehold
Lot 118 DP724657	Freehold
Lot 106 DP755454	Freehold
Lot 29 DP755454	Freehold
Pt Lot 59 DP755454	Freehold
Pt Lot 1 DP1089166	Freehold
Lot 50 DP755454	Freehold
Lot 30 DP755454	Freehold
Pt Lot 1 DP1099037	Freehold
Pt Lot 7 DP206588	Freehold
Lot 116 DP705226	Crown
Lot 179 DP755442	Freehold
Lot 121 DP724656	Crown
Lot 119 DP724657	Crown
Pt Lot 123 DP724655	Crown
Lot 43 DP755454	Crown
Lot 44 DP755454	Crown
Lot 1 DP722881	Freehold
Lot 178 DP755442	Freehold
Lot 2 DP722882	Freehold
Lot 3 DP722882	Freehold
Lot 13 DP1152406	Freehold
Lot 17 DP1140073	Freehold
Lot 16 DP1140073	Freehold
Pt Lot 18 DP1140073	Freehold
Lot 20 DP1140073	Freehold
Pt Lot 1 DP1214133	Freehold
Pt Lot 3 DP1214133	Freehold
Lot 1 DP1016396	Freehold
Lot and Deposited Plan Number	Tenure Type

Lot and Deposited Plan Number	Tenure Type
Other Land	
Roads located between or adjacent to the above parcels of land	Council and Crown
Creeks or streams located between or adjacent to the above parcels of land	Crown
Sandy Hollow – Gulgong Railway	State Rail Authority

18. In Appendix 2, delete Figures 2.1 and 2.2 and replace with the following figure:

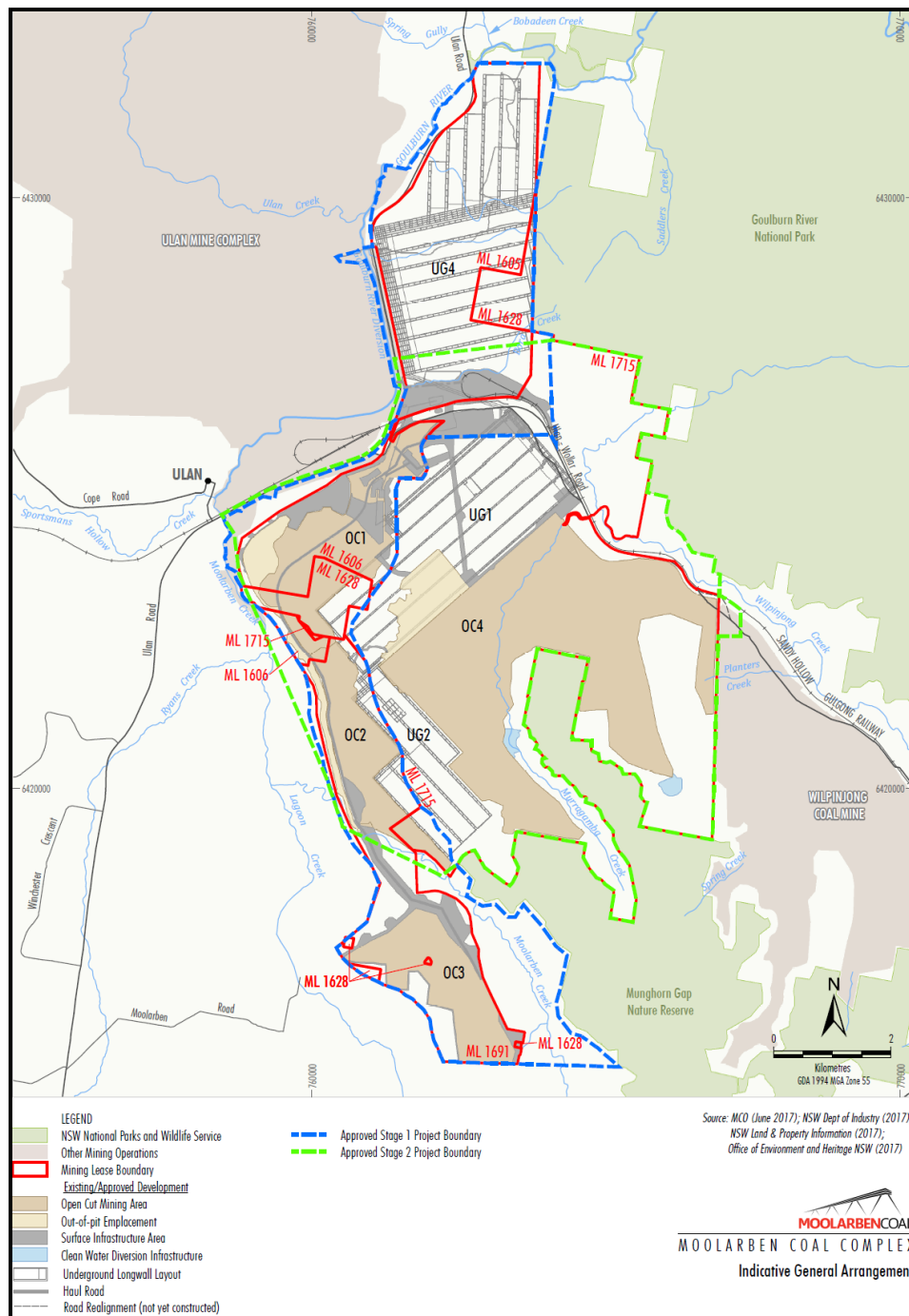


Figure 2.1: General Project Arrangement

19. In Appendix 4, delete Figure 4.1 and Figure 4.2, and replace with the following figures:

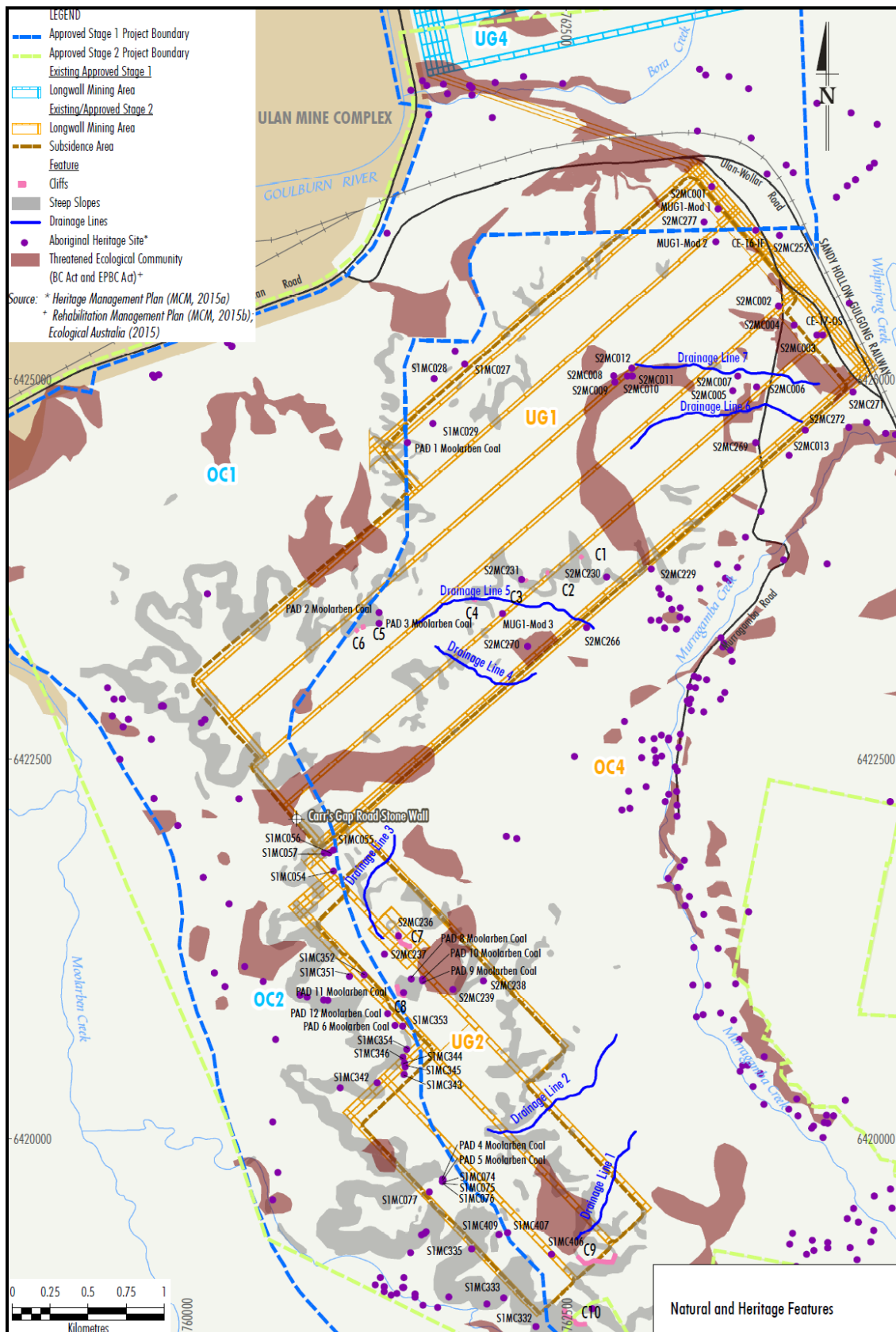
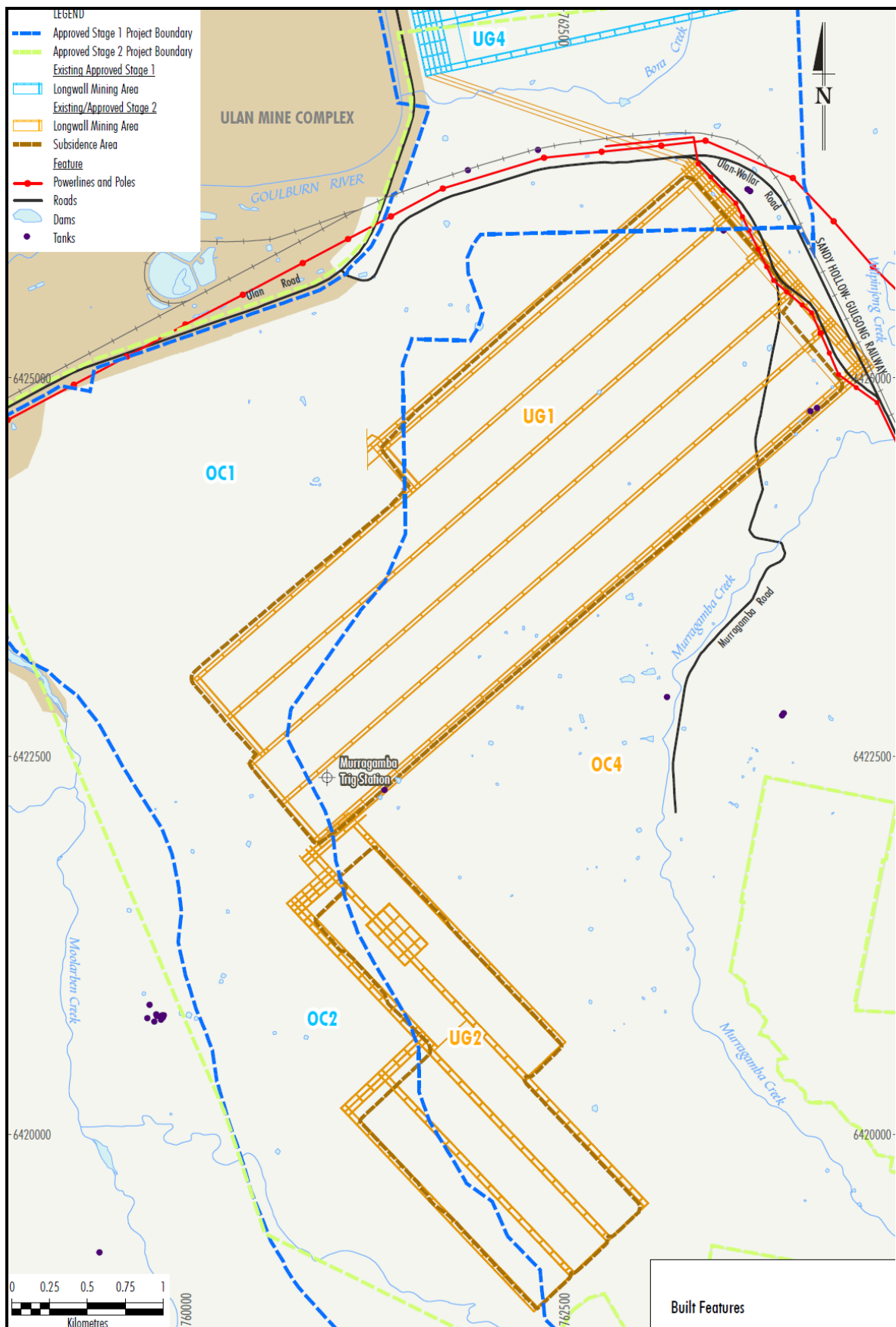


Figure 4.1: Natural and Heritage Features



20. In Appendix 5, delete Figure 5.1 and Table 5.1, and replace with the following figure and table:

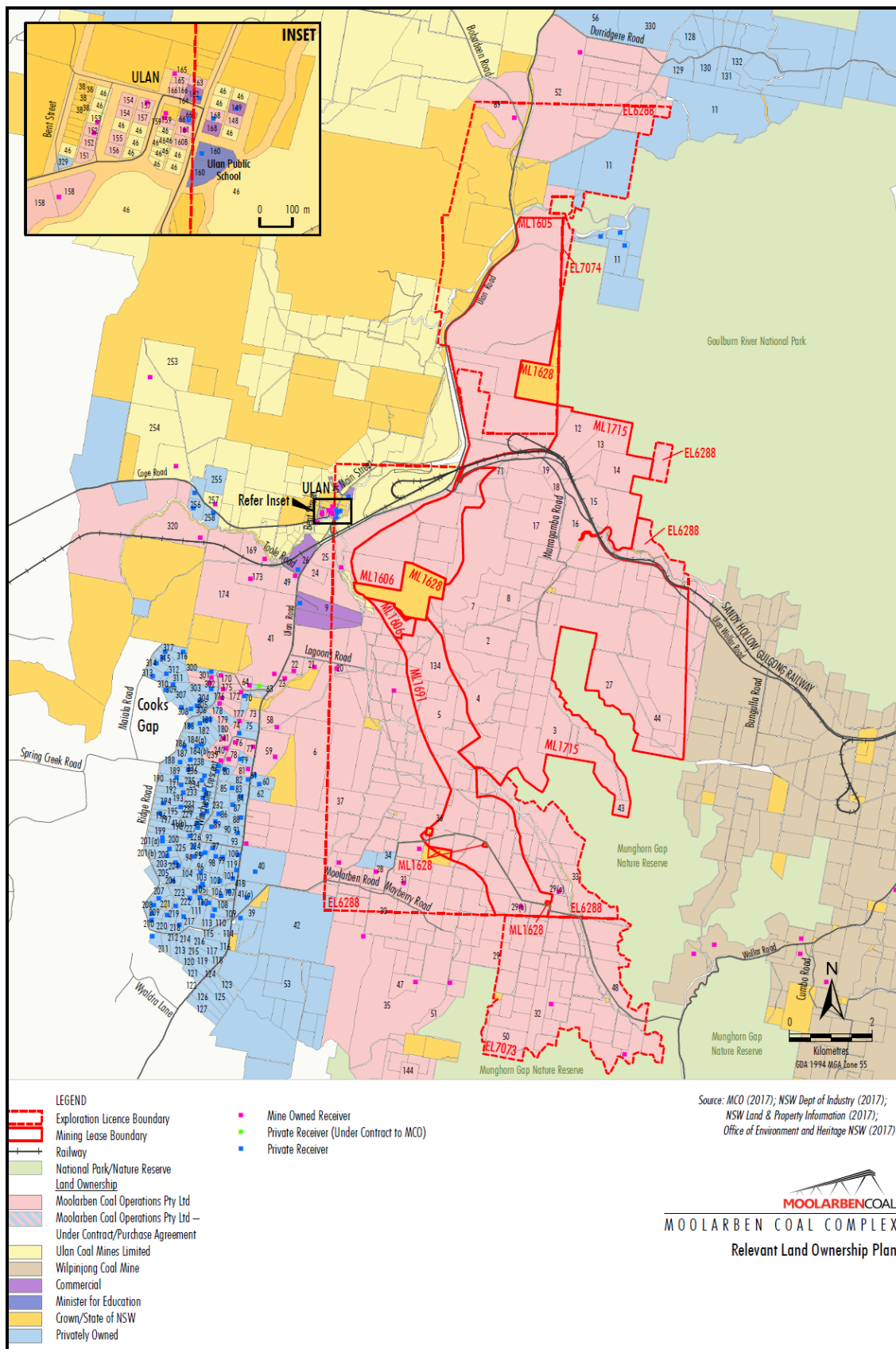


Figure 5.1 Relevant Land Ownership

Ref No	Landholder	Ref No	Landholder	Ref No	Landholder	Ref No	Landholder
1-8	Moolarben Coal Operations Pty Ltd	101(a)	PJ Kearns	190	T & LK Sahyoun	300	CM Collins & CY Marshall
9	Orica Australia Pty Limited	102	KA Roberts	191	BW & TS Lasham	301-302	Moolarben Coal Operations Pty Ltd
10	Moolarben Coal Operations Pty Ltd	103	SB Burnett & SL Grant	192	D Williams	303	HJ Ungaro
11	JE Mullins & CD Imrie	104	RA & LA Deeben	193	DJ Maloney	304	G Balajan
12-25	Moolarben Coal Operations Pty Ltd	105	DJ & N Katsikaris	194	PM & K Potts	305	L Barisic & M Aul
26	Forty North Pty Limited	106	TB & JH Reid	195	R Cottam	306	E Armstrong
27-33	Moolarben Coal Operations Pty Ltd	107	ZJ & M & AA Raso	196	F Saxberg & M Weir	307	M Chant & NK Young
34	T Rheinberger	108	R Varga	197	PGG & I Neilsen	308	NA Dower
35-37	Moolarben Coal Operations Pty Ltd	109	DA Evans	198	GR & ME Metcalfe	309	GS Maher
38	The State of New South Wales	110	JT Thompson & HT Evans	199	PGG & I Nielsen	310	KI Death
39	RM & DJ Sprigg	111	GJ & NJ McEwan	200	VK Grimshaw	311	BJ & LC Williamson
40	JM Devenish	112	MJ & LM Craft	201	KR & GM Towerton	312	MS & JJ Ioannou
41	Moolarben Coal Operations Pty Ltd	113	CPG Ratcliff	202	H & VF Butler	313	NJ & BDE Pracy
41(a&b)	PP Libertis	114	TF & K Holland	203	DJ Miller	314	SL Ford
42	C & L Schmidt	115	PR McLean	204	RB & JE Donnan	315	WJ Richards & BJ Uzela
43-44	Moolarben Coal Operations Pty Ltd	116	DJ & SM Reid	205	DW Sparrow & M Tallan	316	CR Vassel & CM Williams
45	Advance Energy	117	JM Dick	206	CA Marshall & R Vella	317	RJ Hore & V Bingham
46	Ulan Coal Mines Limited	118	A Scott	207	AA & DM Smith	320	Moolarben Coal Operations Pty Ltd
46(b)	North-Eastern Wiradjuri Wilpinjong Community Fund Limited	119	PJ Kearns	208	SA & CR Hasaart	325	S & T Fevale
47-52	Moolarben Coal Operations Pty Ltd	120	PS & DR Ord	209	F Mawson	326	AW & LM Murray
53	WD & MS Bryant	121	EJ Cullen	210	JM & AM Tebutt	327	CA Tanner
54	MA & C Harris	122	WF Wirth	211	SA McGregor & WJ Gray	328	Essential Energy
56	V Cundy	123	G Tuck-Lee & Symons	212	E & M Lepik	329	G Tuck-Lee
58-59	Moolarben Coal Operations Pty Ltd	124	WJ & HE Bailey	213	D & J Parsonage	330	Nwiran Pty Limited
60	CL Rayner & DM Munday	125	DB McBride	214	RK & EG O'Neil		
61	MA Miller	126	MP Julian	215	SG & PM Green		
62	R Menchin	127	BKT & SA Bracken	216	G Holland & FA Handicott		
63	BF & B Whitticker	128	AW Sims	217	GF & GEL Soady		
64	Moolarben Coal Operations Pty Ltd	129	M Yelds	219	T & S Riger		
66	Rostheme Pty Limited	130	GP McEwen	220	SJ Rusten & NU Smith		
69	Moolarben Coal Operations Pty Ltd	131	GR & RA King	221	The State of New South Wales		
70	DJ & A Coventry	132	N Atkins	222	BJ Purtell		
71	Moolarben Coal Operations Pty Ltd	134	Moolarben Coal Operations Pty Ltd	223	EW Palmer & JM Stewart		
73-74	Moolarben Coal Operations Pty Ltd	144	Moolarben Coal Operations Pty Ltd	224	RS & PCC Dupond		
75	P Bon	148	Moolarben Coal Operations Pty Ltd	225	G & RF Doualetas		
76-78	Moolarben Coal Operations Pty Ltd	149	Mid-Western Regional Council	226	LAA & FC Muscat		
79	PTJ & SE Nagle	151-152	Moolarben Coal Operations Pty Ltd	227	WP & JA Hughes		
80	W & D Sebelic	153	Ulan Coal Mine Limited	229	JJ & BA Lowe		
81	Moolarben Coal Operations Pty Ltd	154-159	Moolarben Coal Operations Pty Ltd	230	DA Hoole & DT Rawlinson		
82	SC Hungerford & MC Clemens	160	Minister For Education And Training	231	T Morrison & SM Benny		
83	DS Sebelic	160(b)	Moolarben Coal Operations Pty Ltd	232	L & JA Haaring		
85	J & Z Nikolovski	161	Moolarben Coal Operations Pty Ltd	233	K & D Baal		
86	NW Harris	162	Rowmint Pty Limited	234	D & L Gaw		
87	BJ & K Howe	163-166	Moolarben Coal Operations Pty Ltd	235	LM & RS Wilson		
88	BC Meyers	168	PJL Constructions Pty Limited	236	RG & CA Donovan		
89	MV & HM Glover & E & BJ Tomlinson	169-170	Moolarben Coal Operations Pty Ltd	237	B & S Stokes		
90	SA Powell	171	AD & SA McGregor	238	B Powell		
91	HM Graham	172-177	Moolarben Coal Operations Pty Ltd	239-241	Moolarben Coal Operations Pty Ltd		
92	VA Pullicino & J, S & G Bonnici	178	PR Stone	244	JT & YR Jones		
93	F & M Fenech	180	CD & LL Barrett	245	MP & KLE Cresham		
94	LK Mittermayer	181	SM Forster	247	J & K Batshon		
95	BJ Withington	182	J Dutoitcook	248	G Boustani		
96	D Lazic	183	R & EA Steines	249	CJ & JJ Eldridge		
97	DJ & MD Smith	184(a&b)	LA Stevenson	251	NF Potter & CE Selley		
98	ME & JJ Piper	186	RW & U Adamson	253-254	Ulan Coal Limited		
99	DE Jenner & WB Jensen	187	BT & KM Feeney	255	HJ & H Schmitz		
100	W Ellem	188	KR & T Fielding	256	RC Campbell		
101	RD & DMZ Hull	189	GA Fay	258	PM & CD Elias		

Table 5.1: Landowners

21. In Appendix 7, delete Figure 7.1 and replace with the following figure:

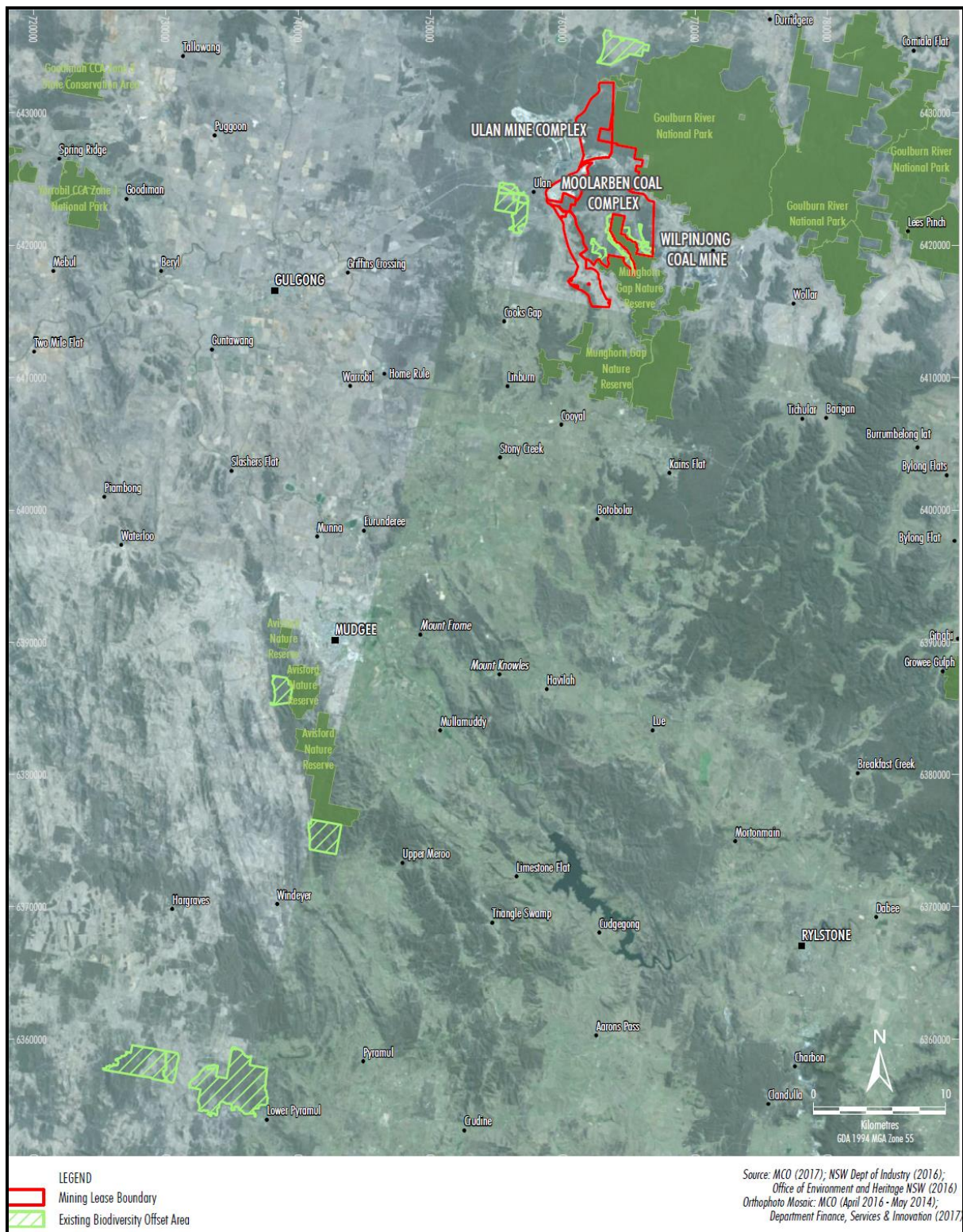


Figure 7.1 Stage 2 Biodiversity Offset Areas

22. In Appendix 8, delete Figure 8.1 and Table 8.1 and its note, and replace with the following figure and table:

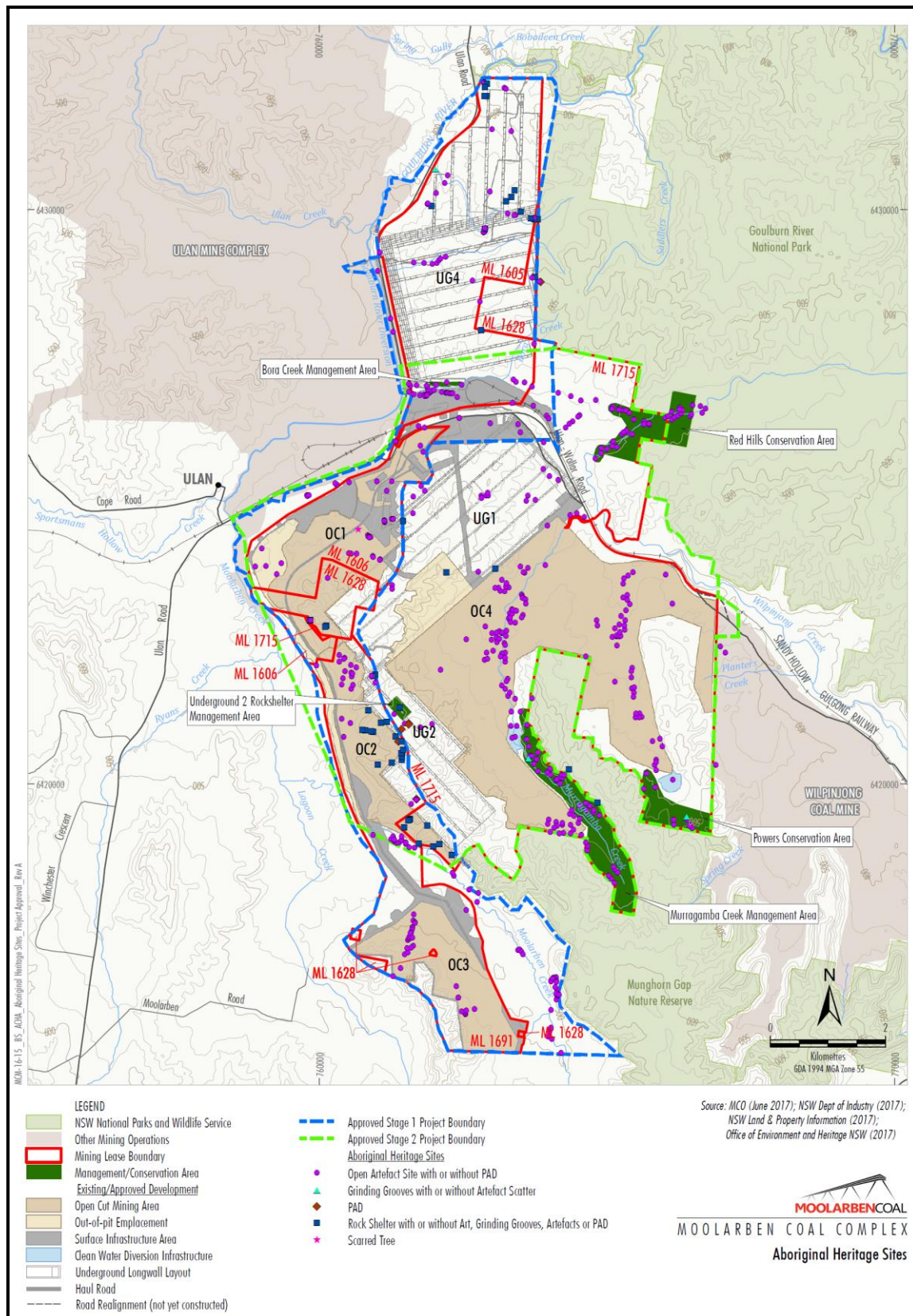


Figure 8.1 Aboriginal Cultural Heritage Sites

Table 8.1: Aboriginal Cultural Heritage Sites

AHIMS	Site Name	Site Type	AHIMS	Site Name	Site Type
36-3-0691	CE-15-IF	Isolated Find	36-3-2621	S1MC339	Rock shelter with PAD
36-3-0237	MC11	Open Artefact Site	36-3-2622	S1MC340	Rock shelter with PAD
36-3-0223	MC2	Open Artefact Site	36-3-2623	S1MC341	Rock shelter with PAD
36-3-0241	MC4	Open Artefact Site	36-3-2624	S1MC342	Rock shelter with PAD
36-3-0240	MC6	Artefact Scatter	36-3-2625	S1MC343	Rock shelter with PAD
36-3-0337	MC7	Open Artefact Site	36-3-2626	S1MC344	Rock shelter with artefacts
36-3-0239	MC8	Open Artefact Site	36-3-2627	S1MC345	Rock shelter with PAD
36-3-0222	Moolarben Creek MC1	Artefact Scatter	36-3-2628	S1MC346	Rock shelter with PAD
36-3-3144	MUG1-Mod 1	Isolated Find	36-3-2629	S1MC347	Rock shelter with PAD
36-3-0837	PAD 1 Moolarben Coal	Rock Shelter and PAD	36-3-2630	S1MC348	Rock shelter with PAD
36-3-0956	PAD 10 Moolarben Coal	PAD	36-3-2631	S1MC349	Rock shelter with PAD
36-3-0957	PAD 11 Moolarben Coal	PAD	36-3-2632	S1MC350	Rock shelter with PAD
36-3-0958	PAD 12 Moolarben Coal	PAD and Rockshelter	36-3-2633	S1MC351	Rock shelter with PAD
36-3-0838	PAD 2 Moolarben Coal	Artefact Scatter and PAD	36-3-2634	S1MC352	Rock shelter with PAD
36-3-0839	PAD 3 Moolarben Coal	Artefact Scatter and PAD	36-3-2635	S1MC353	Rock shelter with PAD
36-3-0883	PAD 4 Moolarben Coal	PAD	36-3-2636	S1MC354	Rock shelter with PAD
36-3-0884	PAD 5 Moolarben Coal	PAD	36-3-2660	S1MC355	Artefact Scatter
36-3-0885	PAD 6 Moolarben Coal	PAD	36-3-2661	S1MC356	Isolated Find
36-3-0113	PAD 7 Moolarben Coal	PAD	36-3-2662	S1MC357	Artefact Scatter
36-3-0954	PAD 8 Moolarben Coal	Artefact Scatter and PAD	36-3-1150	S2MC001	Isolated Find
36-3-0955	PAD 9 Moolarben Coal	PAD	36-3-1151	S2MC002	Isolated Find
36-3-0798	S1MC001	Scarred Tree	36-3-1152	S2MC003	Artefact Scatter
36-3-0799	S1MC002	Artefact Scatter	36-3-1153	S2MC004	Isolated Find
36-3-0800	S1MC003	Isolated Find	36-3-1154	S2MC005	Artefact Scatter
36-3-0801	S1MC004	Isolated Find	36-3-1155	S2MC006	Artefact Scatter
36-3-0802	S1MC005	Artefact Scatter	36-3-1156	S2MC007	Isolated Find
36-3-0803	S1MC006	Isolated Find	36-3-1157	S2MC008	Isolated Find
36-3-0804	S1MC007	Isolated Find	36-3-1158	S2MC009	Isolated Find
36-3-0805	S1MC008	Isolated Find	36-3-1159	S2MC010	Artefact Scatter
36-3-0806	S1MC009	Isolated Find	36-3-1160	S2MC011	Isolated Find
36-3-0807	S1MC010	Isolated Find	36-3-1161	S2MC012	Isolated Find
36-3-0808	S1MC011	Artefact Scatter	36-3-1162	S2MC013	Isolated Find
36-3-0809	S1MC012	Isolated Find	36-3-1163	S2MC014	Artefact Scatter
36-3-0810	S1MC013	Isolated Find	36-3-1164	S2MC015	Artefact Scatter
36-3-0811	S1MC014	Isolated Find	36-3-1165	S2MC016	Artefact Scatter
36-3-0812	S1MC015	Isolated Find	36-3-1166	S2MC017	Artefact Scatter
36-3-0813	S1MC016	Isolated Find	36-3-1167	S2MC018	Artefact Scatter and PAD
36-3-0814	S1MC017	Isolated Find	36-3-1168	S2MC019	Isolated Find
36-3-0815	S1MC018	Isolated Find	36-3-1169	S2MC020	Artefact Scatter
36-3-0816	S1MC019	Isolated Find	36-3-1170	S2MC021	Isolated Find
36-3-0817	S1MC020	Isolated Find	36-3-1171	S2MC022	Artefact Scatter
36-3-0818	S1MC021	Isolated Find	36-3-1172	S2MC023	Isolated Find
36-3-0819	S1MC022	Isolated Find	36-3-1173	S2MC024	Isolated Find
36-3-0820	S1MC023	Isolated Find	36-3-1174	S2MC025	Isolated Find
36-3-0821	S1MC024	Isolated Find	36-3-0238	S2MC028, MC10	Open Artefact Site
36-3-0822	S1MC025	Isolated Find	36-3-1175	S2MC029	Artefact Scatter

AHIMS	Site Name	Site Type	AHIMS	Site Name	Site Type
36-3-0823	S1MC026	Isolated Find	36-3-1176	S2MC030	Artefact Scatter
36-3-0824	S1MC027	Isolated Find	36-3-1177	S2MC031	Isolated Find
36-3-0825	S1MC028	Isolated Find	36-3-1178	S2MC032	Artefact Scatter
36-3-0826	S1MC029	Isolated Find	36-3-1179	S2MC033	Artefact Scatter
36-3-0827	S1MC030	Isolated Find	36-3-1180	S2MC034	Isolated Find
36-3-0828	S1MC031	Isolated Find	36-3-1181	S2MC035	Isolated Find
36-3-0829	S1MC032	Isolated Find	36-3-1182	S2MC036	Isolated Find
36-3-0830	S1MC033	Isolated Find	36-3-1183	S2MC037	Isolated Find
36-3-0831	S1MC034	Isolated Find	36-3-1184	S2MC038	Artefact Scatter
36-3-0832	S1MC035	Isolated Find	36-3-1185	S2MC039	Artefact Scatter
36-3-0833	S1MC036	Isolated Find	36-3-1186	S2MC040	Artefact Scatter
36-3-0834	S1MC037	Isolated Find	36-3-1186b	S2MC041	Isolated Find
36-3-0835	S1MC038	Isolated Find	36-3-1187	S2MC042	Artefact Scatter
36-3-0836	S1MC039	Isolated Find	36-3-1188	S2MC043	Artefact Scatter
36-3-0845	S1MC040	Artefact Scatter	36-3-1189	S2MC044	Artefact Scatter
36-3-0846	S1MC041	Isolated Find	36-3-1190	S2MC045	Artefact Scatter
36-3-0847	S1MC042	Isolated Find	36-3-1191	S2MC046	Artefact Scatter
36-3-0848	S1MC043	Artefact Scatter	36-3-1192	S2MC047	Artefact Scatter
36-3-0849	S1MC044	Isolated Find	36-3-1193	S2MC048	Artefact Scatter
36-3-0850	S1MC045	Isolated Find	36-3-1194	S2MC049	Isolated Find
36-3-0851	S1MC046	Isolated Find	36-3-1195	S2MC050	Artefact Scatter
36-3-0852	S1MC047	Isolated Find	36-3-1196	S2MC051	Artefact Scatter
36-3-0853	S1MC048	Isolated Find	36-3-1197	S2MC052	Isolated Find
36-3-0854	S1MC049	Isolated Find	36-3-1198	S2MC053	Artefact Scatter
36-3-0855	S1MC050	Isolated Find	36-3-1199	S2MC054	Artefact Scatter
36-3-0856	S1MC051	Isolated Find	36-3-1200	S2MC055	Artefact Scatter
36-3-0857	S1MC052	Isolated Find	36-3-1201	S2MC056	Artefact Scatter
36-3-0858	S1MC053	Artefact Scatter	36-3-1202	S2MC057	Artefact Scatter
36-3-0859	S1MC054	Artefact Scatter	36-3-1203	S2MC058	Artefact Scatter
36-3-0860	S1MC055	Rock Shelter with Artefacts	36-3-1204	S2MC059	Artefact Scatter
36-3-0861	S1MC056	Rock Shelter with Artefacts	36-3-1206	S2MC059b	Isolated Find
36-3-0862	S1MC057	Artefact Scatter	36-3-1207	S2MC060	Isolated Find
36-3-0863	S1MC058	Artefact Scatter	36-3-1208	S2MC061	Artefact Scatter
36-3-0864	S1MC059	Artefact Scatter	36-3-1209	S2MC062	Artefact Scatter
36-3-0865	S1MC060	Artefact Scatter	36-3-1210	S2MC063	Artefact Scatter
36-3-0866	S1MC061	Isolated Find	36-3-1211	S2MC064	Artefact Scatter
36-3-0867	S1MC062	Isolated Find	36-3-1212	S2MC065	Artefact Scatter
36-3-0868	S1MC063	Isolated Find	36-3-1213	S2MC066	Isolated Find
36-3-0869	S1MC064	Isolated Find	36-3-1214	S2MC067	Artefact Scatter
36-3-0870	S1MC065	Isolated Find	36-3-1215	S2MC068	Isolated Find
36-3-0871	S1MC066	Artefact Scatter	36-3-1216	S2MC069	Isolated Find
36-3-0872	S1MC067	Artefact Scatter	36-3-1217	S2MC070	Artefact Scatter
36-3-0873	S1MC068	Isolated Find	36-3-1218	S2MC071	Artefact Scatter
36-3-0874	S1MC069	Isolated Find	36-3-1219	S2MC072	Artefact Scatter
36-3-0875	S1MC070	Isolated Find	36-3-1220	S2MC073	Isolated Find
36-3-0876	S1MC071	Isolated Find	36-3-2581	S2MC074	Artefact Scatter
36-3-0877	S1MC072	Isolated Find	36-3-1221	S2MC075	Isolated Find
36-3-0878	S1MC073	Isolated Find	36-3-1222	S2MC076	Artefact Scatter
36-3-0879	S1MC074	Isolated Find	36-3-1223	S2MC077	Artefact Scatter
36-3-0880	S1MC075	Isolated Find	36-3-1224	S2MC078	Artefact Scatter
36-3-0881	S1MC076	Isolated Find	36-3-1225	S2MC079	Isolated Find
36-3-0882	S1MC077	Isolated Find	36-3-1226	S2MC080	Artefact Scatter
36-3-0886	S1MC078	Artefact Scatter	36-3-1227	S2MC081	Artefact Scatter
36-3-0887	S1MC079	Isolated Find	36-3-1228	S2MC082	Artefact Scatter
36-3-0888	S1MC080	Isolated Find	36-3-1229	S2MC083	Isolated Find
36-3-0889	S1MC081	Isolated Find	36-3-1230	S2MC084	Isolated Find
36-3-0890	S1MC082	Isolated Find	36-3-1231	S2MC085	Isolated Find
36-3-0891	S1MC083	Isolated Find	36-3-1232	S2MC086	Artefact Scatter
36-3-0892	S1MC084	Artefact Scatter	36-3-1233	S2MC087	Artefact Scatter
36-3-0893	S1MC085	Isolated Find	36-3-1234	S2MC088	Artefact Scatter

AHIMS	Site Name	Site Type	AHIMS	Site Name	Site Type
36-3-0894	S1MC086	Isolated Find	36-3-1235	S2MC089	Artefact Scatter
36-3-0895	S1MC087	Isolated Find	36-3-1236	S2MC090	Isolated Find
36-3-0896	S1MC088	Isolated Find	36-3-1237	S2MC091	Isolated Find
36-3-0897	S1MC089	Isolated Find	36-3-1238	S2MC092	Isolated Find
36-3-0898	S1MC090	Isolated Find	36-3-1239	S2MC093	Artefact Scatter
36-3-0899	S1MC091	Isolated Find	36-3-1240	S2MC094	Isolated Find
36-3-0900	S1MC092	Isolated Find	36-3-1241	S2MC095	Isolated Find
36-3-0901	S1MC093	Isolated Find	36-3-1242	S2MC096	Artefact Scatter
36-3-0902	S1MC094	Artefact Scatter	36-3-1243	S2MC097	Artefact Scatter
36-3-0903	S1MC095	Isolated Find	36-3-1244	S2MC098	Isolated Find
36-3-0904	S1MC096	Isolated Find	36-3-1245	S2MC099	Isolated Find
36-3-0905	S1MC097	Isolated Find	36-3-1246	S2MC100	Artefact Scatter
36-3-0906	S1MC098	Isolated Find	36-3-1247	S2MC101	Artefact Scatter
36-3-0907	S1MC099	Isolated Find	36-3-1248	S2MC102	Isolated Find
36-3-0908	S1MC100	Isolated Find	36-3-1249	S2MC103	Isolated Find
36-3-0909	S1MC101	Isolated Find	36-3-1250	S2MC104	Artefact Scatter
36-3-0910	S1MC102	Artefact Scatter	36-3-1251	S2MC105	Isolated Find
36-3-0912	S1MC103	Artefact Scatter	36-3-1252	S2MC106	Isolated Find
36-3-0911	S1MC103a	Artefact Scatter	36-3-1253	S2MC107	Isolated Find
36-3-0913	S1MC104	Artefact Scatter	36-3-1254	S2MC108	Artefact Scatter
36-3-0914	S1MC105	Isolated Find	36-3-1255	S2MC109	Artefact Scatter
36-3-0915	S1MC106	Isolated Find	36-3-1256	S2MC110	Isolated Find
36-3-0916	S1MC107	Isolated Find	36-3-1257	S2MC111	Artefact Scatter
36-3-0917	S1MC108	Isolated Find	36-3-1258	S2MC112	Artefact Scatter
36-3-0918	S1MC109	Isolated Find	36-3-1259	S2MC113	Isolated Find
36-3-0919	S1MC110	Isolated Find	36-3-1260	S2MC114	Artefact Scatter
36-3-0920	S1MC111	Isolated Find	36-3-1261	S2MC115	Isolated Find
36-3-0921	S1MC112	Isolated Find	36-3-1262	S2MC116	Artefact Scatter
36-3-0922	S1MC113	Isolated Find	36-3-1263	S2MC117	Isolated Find
36-3-0923	S1MC114	Isolated Find	36-3-1264	S2MC118	Isolated Find
36-3-0924	S1MC115	Isolated Find	36-3-1265	S2MC119	Artefact Scatter
36-3-0925	S1MC116	Isolated Find	36-3-1266	S2MC120	Isolated Find
36-3-0926	S1MC117	Isolated Find	36-3-1267	S2MC121	Isolated Find
36-3-0927	S1MC118	Isolated Find	36-3-1268	S2MC122	Artefact Scatter
36-3-0928	S1MC119	Isolated Find	36-3-1269	S2MC123	Artefact Scatter
36-3-0929	S1MC120	Isolated Find	36-3-1270	S2MC124	Artefact Scatter
36-3-0930	S1MC121	Isolated Find	36-3-1271	S2MC125	Artefact Scatter
36-3-0931	S1MC122	Isolated Find	36-3-1272	S2MC126	Artefact Scatter
36-3-0932	S1MC123	Isolated Find	36-3-1273	S2MC127	Isolated Find
36-3-0933	S1MC124	Isolated Find	36-3-1274	S2MC128	Artefact Scatter
36-3-0934	S1MC125	Isolated Find	36-3-1275	S2MC129	Artefact Scatter
36-3-0935	S1MC126	Isolated Find	36-3-1276	S2MC130	Artefact Scatter
36-3-0936	S1MC127	Isolated Find	36-3-1277	S2MC131	Isolated Find
36-3-0937	S1MC128	Isolated Find	36-3-1278	S2MC132	Artefact Scatter
36-3-0938	S1MC129	Isolated Find	36-3-1279	S2MC133	Artefact Scatter
36-3-0939	S1MC130	Artefact Scatter	36-3-1280	S2MC134	Artefact Scatter
36-3-0940	S1MC131	Isolated Find	36-3-1281	S2MC135	Artefact Scatter
36-3-0941	S1MC132	Artefact Scatter	36-3-1282	S2MC136	Isolated Find
36-3-0942	S1MC133	Artefact Scatter	36-3-1283	S2MC137	Isolated Find
36-3-0943	S1MC134	Isolated Find	36-3-1284	S2MC138	Isolated Find
36-3-0944	S1MC135	Artefact Scatter	36-3-1285	S2MC139	Isolated Find
36-3-0945	S1MC136	Artefact Scatter	36-3-1286	S2MC140	Artefact Scatter
36-3-0946	S1MC137	Isolated Find	36-3-1287	S2MC141	Artefact Scatter
36-3-0947	S1MC138	Isolated Find	36-3-1288	S2MC142	Isolated Find
36-3-0948	S1MC139	Artefact Scatter	36-3-1289	S2MC143	Isolated Find
36-3-0949	S1MC140	Artefact Scatter	36-3-1290	S2MC144	Isolated Find
36-3-0950	S1MC141	Isolated Find	36-3-1291	S2MC145	Artefact Scatter
36-3-0951	S1MC142	Artefact Scatter	36-3-1292	S2MC146	Artefact Scatter
36-3-0952	S1MC143	Artefact Scatter	36-3-1293	S2MC147	Isolated Find
36-3-0953	S1MC144	Isolated Find	36-3-1294	S2MC148	Artefact Scatter
36-3-1029	S1MC213	Isolated Find	36-3-1295	S2MC149	Isolated Find
36-3-1041	S1MC225	Isolated Find	36-3-1296	S2MC150	Artefact Scatter
36-3-1042	S1MC226	Isolated Find	36-3-1297	S2MC151	Grinding Grooves and

AHIMS	Site Name	Site Type	AHIMS	Site Name	Site Type
					Artefact Scatter
36-3-1043	S1MC227	Isolated Find	36-3-1298	S2MC152	Artefact Scatter
36-3-1044	S1MC228	Artefact scatter	36-3-1299	S2MC153	Artefact Scatter
36-3-1045	S1MC229	Isolated Find	36-3-1300	S2MC154	Artefact Scatter
36-3-1046	S1MC230	Artefact Scatter	36-3-1301	S2MC155	Isolated Find
36-3-1047	S1MC231	Isolated Find	36-3-1302	S2MC156	Artefact Scatter
36-3-1048	S1MC232	Isolated Find	36-3-1303	S2MC157	Artefact Scatter
36-3-1049	S1MC233	Artefact Scatter	36-3-1304	S2MC158	Artefact Scatter
36-3-1050	S1MC234	Isolated Find	36-3-1305	S2MC159	Artefact Scatter
36-3-1051	S1MC235	Isolated Find	36-3-1306	S2MC160	Isolated Find
36-3-1052	S1MC236	Artefact Scatter	36-3-1307	S2MC161	Artefact Scatter
36-3-1053	S1MC237	Isolated Find	36-3-1308	S2MC162	Artefact Scatter
36-3-1054	S1MC238	Isolated Find	36-3-1309	S2MC163	Artefact Scatter
36-3-1055	S1MC239	Isolated Find	36-3-1310	S2MC164	Isolated Find
36-3-1056	S1MC240	Artefact Scatter	36-3-1311	S2MC165	Artefact Scatter
36-3-1057	S1MC241	Artefact Scatter	36-3-1312	S2MC166	Isolated Find
36-3-1058	S1MC242	Isolated Find	36-3-1313	S2MC167	Isolated Find
36-3-1059	S1MC243	Isolated Find	36-3-1314	S2MC168	Artefact Scatter
36-3-1060	S1MC244	Artefact Scatter	36-3-1315	S2MC169	Isolated Find
36-3-1113	S1MC244a	Artefact Scatter	36-3-1316	S2MC170	Artefact Scatter
36-3-1061	S1MC245	Isolated Find	36-3-1317	S2MC171	Artefact Scatter
36-3-1062	S1MC246	Isolated Find	36-3-1318	S2MC172	Artefact Scatter
36-3-1063	S1MC247	Isolated Find	36-3-1319	S2MC173	Isolated Find
36-3-1064	S1MC248	Isolated Find	36-3-1320	S2MC174	Isolated Find
36-3-1065	S1MC249	Isolated Find	36-3-1321	S2MC175	Isolated Find
36-3-1066	S1MC250	Isolated Find	36-3-1322	S2MC176	Artefact Scatter
36-3-1067	S1MC252	Isolated Find	36-3-1323	S2MC177	Artefact Scatter
36-3-1068	S1MC253	Isolated Find	36-3-1324	S2MC178	Artefact Scatter
36-3-1069	S1MC254	Artefact Scatter	36-3-1325	S2MC179	Artefact Scatter
36-3-1070	S1MC255	Artefact Scatter and PAD	36-3-1326	S2MC180	Artefact Scatter
36-3-1071	S1MC256	Artefact Scatter	36-3-1327	S2MC181	Artefact Scatter
36-3-1072	S1MC257	Artefact Scatter	36-3-1328	S2MC182	Isolated Find
36-3-1073	S1MC258	Artefact Scatter	36-3-1329	S2MC183	Artefact Scatter
36-3-1074	S1MC259	Isolated Find	36-3-1330	S2MC184	Isolated Find
36-3-1075	S1MC260	Isolated Find	36-3-1331	S2MC185	Isolated Find
36-3-1076	S1MC261	Rock Shelter with Artefacts	36-3-1332	S2MC186	Artefact Scatter
36-3-1077	S1MC262	Isolated Find	36-3-1333	S2MC187	Isolated Find
36-3-1078	S1MC263	Isolated Find	36-3-1334	S2MC188	Artefact Scatter
36-3-1079	S1MC264	Grinding Grooves and Artefact Scatter	36-3-1335	S2MC189	Isolated Find
36-3-1080	S1MC265	Artefact Scatter	36-3-1336	S2MC190	Isolated Find
36-3-1081	S1MC266	Isolated Find	36-3-1337	S2MC191	Artefact Scatter
36-3-1082	S1MC267	Rock Shelter with Artefacts	36-3-1338	S2MC192	Isolated Find
36-3-1083	S1MC268	Isolated Find	36-3-1339	S2MC193	Artefact Scatter
36-3-1084	S1MC269	Isolated Find	36-3-1340	S2MC194	Artefact Scatter
36-3-1085	S1MC270	Isolated Find	36-3-1341	S2MC195	Artefact Scatter
36-3-1086	S1MC271	Rock Shelter with Artefacts	36-3-1342	S2MC196	Artefact Scatter
36-3-1087	S1MC272	Artefact Scatter	36-3-1343	S2MC197	Artefact Scatter
36-3-1088	S1MC273	Isolated Find	36-3-1344	S2MC198	Artefact Scatter
36-3-1089	S1MC274	Isolated Find	36-3-1345	S2MC199	Artefact Scatter
36-3-1090	S1MC275	Isolated Find	36-3-1346	S2MC200	Artefact Scatter
36-3-1091	S1MC276	Isolated Find	36-3-1347, 36-3-1348	S2MC201	Artefact Scatter
36-3-1092	S1MC277	Isolated Find	36-3-1349	S2MC202	Artefact Scatter
36-3-1093	S1MC278	Isolated Find	36-3-1350	S2MC203	Artefact Scatter
36-3-1094	S1MC279	Isolated Find	36-3-1351	S2MC204	Artefact Scatter
36-3-0042	S1MC280; Ulan Creek 2	Rock Shelter with Artefacts and Grinding Grooves	36-3-1352	S2MC205	Artefact Scatter

AHIMS	Site Name	Site Type	AHIMS	Site Name	Site Type
36-3-1095	S1MC281	Artefact Scatter	36-3-1353	S2MC206	Artefact Scatter
36-3-1096	S1MC282	Artefact Scatter	36-3-1354	S2MC207	Artefact Scatter
36-3-0098	S1MC283	Rock Shelter with Artefacts	36-3-1355	S2MC208	Artefact Scatter
36-3-1098	S1MC284	Rock Shelter with Artefacts	36-3-1356	S2MC209	Artefact Scatter
36-3-1099	S1MC285	Rock Shelter with Artefacts	36-3-1357	S2MC210	Artefact Scatter
36-3-1100	S1MC286	Rock Shelter with Artefacts	36-3-1358	S2MC211	Isolated Find
36-3-1101	S1MC287	Rock Shelter with Artefacts	36-3-1359	S2MC212	Artefact Scatter
36-3-1102	S1MC288	Rock Shelter with Artefacts	36-3-1360	S2MC213	Isolated Find
36-3-1103	S1MC289	Rock Shelter with Artefacts	36-3-1361	S2MC214	Isolated Find
36-3-1104	S1MC290	Rock Shelter with Artefacts	36-3-1362	S2MC215	Artefact Scatter
36-3-1105	S1MC291	Isolated Find	36-3-1363	S2MC216	Artefact Scatter
36-3-1106	S1MC292	Isolated Find	36-3-1364	S2MC217	Artefact Scatter
36-3-1107	S1MC293	Isolated Find	36-3-1365	S2MC218	Artefact Scatter
36-3-1108	S1MC294	Rock Shelter with Artefacts	36-3-1366	S2MC219	Artefact Scatter
36-3-1109	S1MC295	Isolated Find	36-3-1367	S2MC220	Artefact Scatter
36-3-1110	S1MC296	Rock Shelter with Artefacts	36-3-1368	S2MC221	Isolated Find
36-3-1111	S1MC297	Rock Shelter with Artefacts	36-3-1369	S2MC222	Artefact Scatter
36-3-0840	S1MC298	Artefact Scatter	36-3-1370	S2MC223	Isolated Find
36-3-0841	S1MC299	Isolated Find	36-3-1371	S2MC224	Isolated Find
36-3-0842	S1MC300	Artefact Scatter	36-3-1372	S2MC225	Artefact Scatter
36-3-0843	S1MC301	Artefact Scatter	36-3-1373	S2MC226	Artefact Scatter
36-3-0844	S1MC302	Artefact Scatter	36-3-1374	S2MC227	Artefact Scatter
36-3-1140	S1MC303	Artefact Scatter	36-3-1375	S2MC228	Artefact Scatter
36-3-1141	S1MC304	Artefact Scatter	36-3-1376	S2MC229	Rock Shelter with Artefacts
36-3-1142	S1MC305	Artefact Scatter	36-3-1377	S2MC230	Isolated Find
36-3-1143	S1MC306	Isolated Find	36-3-1378	S2MC231	Rock Shelter with Artefacts
36-3-1144	S1MC307	Isolated Find	36-3-1379	S2MC232	Rock Shelter with Artefacts
36-3-1145	S1MC308	Artefact Scatter and PAD	36-3-1380	S2MC233	Rock Shelter with Artefacts
36-3-1146	S1MC309	Isolated Find	36-3-1381	S2MC234	Artefact Scatter
36-3-1137	S1MC310	Isolated Find	36-3-0016 & 36-3-0134	S2MC236	Rock Shelters with Art and Artefacts
36-3-1138	S1MC311	Isolated Find	36-3-1382	S2MC237	Isolated Find
36-3-1149	S1MC312	Isolated Find	36-3-1383	S2MC238	Artefact Scatter
36-3-1407	S1MC313 (NB1)	Artefact Scatter	36-3-1384	S2MC239	Artefact Scatter
36-3-1408	S1MC314 (NB2)	Artefact Scatter and PAD	36-3-1385	S2MC240	Artefact Scatter
36-3-1409	S1MC315 (NB3)	Isolated Find	36-3-1386	S2MC241	Artefact Scatter
36-3-1410	S1MC316 (NB4)	Artefact Scatter	36-3-1387	S2MC242	Isolated Find
36-3-1411	S1MC317 (NB5)	Isolated Find	36-3-1388	S2MC243	Isolated Find
36-3-1412	S1MC318 (NB6)	Isolated Find	36-3-1389	S2MC244	Isolated Find
36-3-1413	S1MC319 (NB7)	Isolated Find	36-3-1390	S2MC245	Isolated Find
36-3-1414	S1MC320 (NB8)	Isolated Find	36-3-1391	S2MC246	Isolated Find
36-3-1415	S1MC321 (NB9)	Isolated Find	36-3-1392	S2MC247	Artefact Scatter
36-3-1416	S1MC322 (NB10)	Artefact Scatter and PAD	36-3-1393	S2MC248	Artefact Scatter
36-3-1417	S1MC323 (NB11)	Isolated Find	36-3-1394	S2MC249	Artefact Scatter
36-3-2597	S1MC324	Isolated Find	36-3-1395	S2MC250	Artefact Scatter and

AHIMS	Site Name	Site Type	AHIMS	Site Name	Site Type
	(NB12)				PAD
36-3-2607	S1MC325	Isolated Find	36-3-1396	S2MC251	Artefact Scatter and PAD
36-3-2608	S1MC326	Rock shelter with PAD	36-3-1397	S2MC252	Isolated Find
36-3-2609	S1MC327	Rock shelter with PAD	36-3-1398	S2MC253	Isolated Find
36-3-2610	S1MC328	Isolated Find	36-3-1399	S2MC254	Isolated Find
36-3-2611	S1MC329	Rock shelter with PAD	36-3-1400	S2MC255	Isolated Find
36-3-2612	S1MC330	Rock shelter with PAD	36-3-1401	S2MC256	Artefact Scatter
36-3-2613	S1MC331	Rock shelter with artefacts	36-3-1402	S2MC257	Isolated Find
36-3-2614	S1MC332	Rock shelter with PAD	36-3-1403	S2MC258	Artefact Scatter and PAD
36-3-2615	S1MC333	Rock shelter with PAD	36-3-1404	S2MC259	Isolated Find
36-3-2616	S1MC334	Rock shelter with PAD	36-3-1405	S2MC260	Isolated Find
36-3-2617	S1MC335	Rock shelter with PAD	36-3-1406	S2MC261a	Grinding Grooves and Isolated Find
36-3-2618	S1MC336	Rock shelter with PAD	36-3-2602	S2MC262	Artefact Scatter
36-3-2619	S1MC337	Rock shelter with PAD	36-3-3222	S2MC404	Artefact Scatter
36-3-2620	S1MC338	Rock shelter with PAD	36-3-0720; 36-3-0287	WC1 - Wilpinjong Creek 1	Open Artefact Site

23. In Appendix 9, delete Figure 9.1 and replace with the following figure:

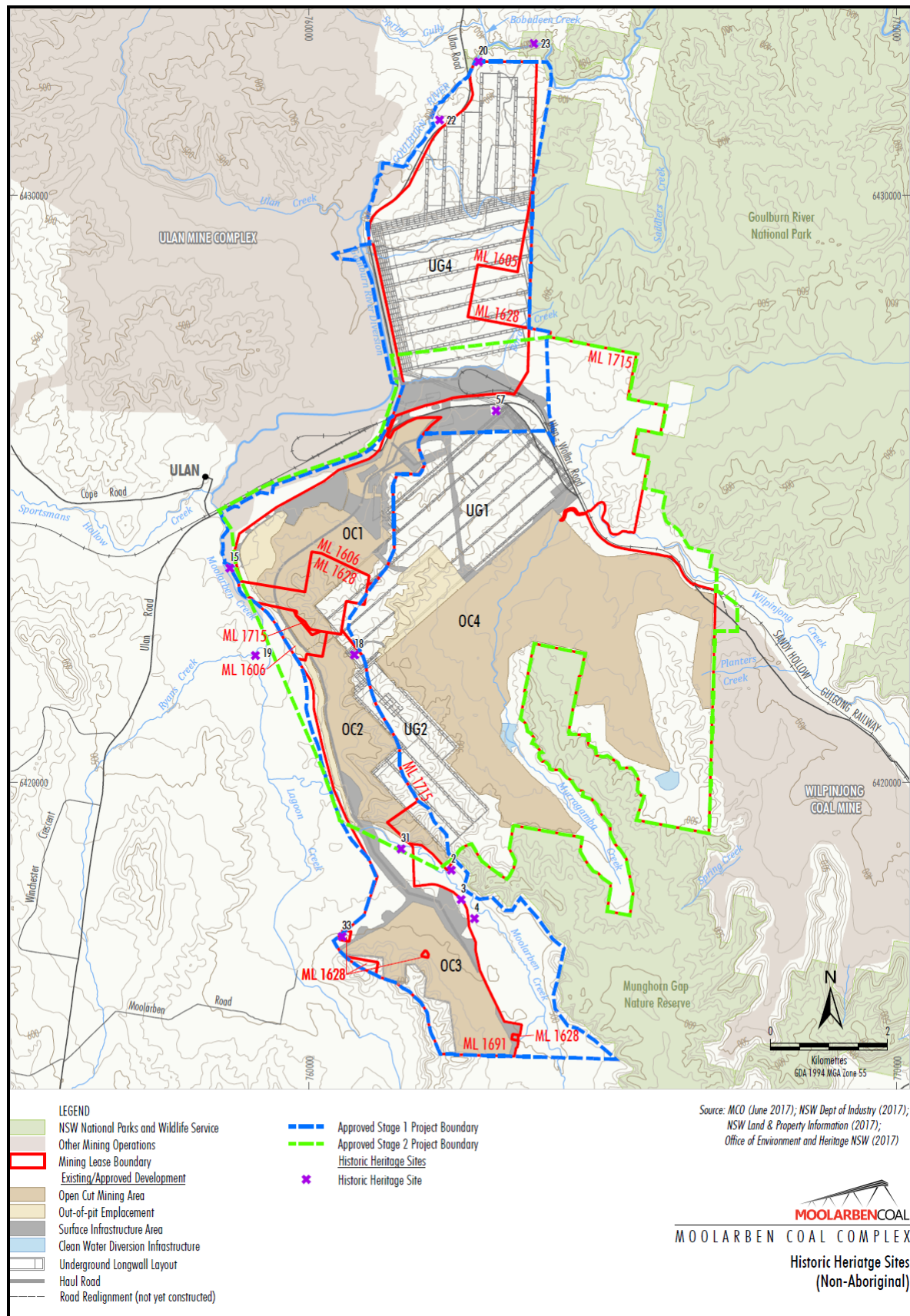


Figure 9.1: Historic Heritage Sites

24. In Appendix 10, delete Figure 10.1 and replace with the following figure:

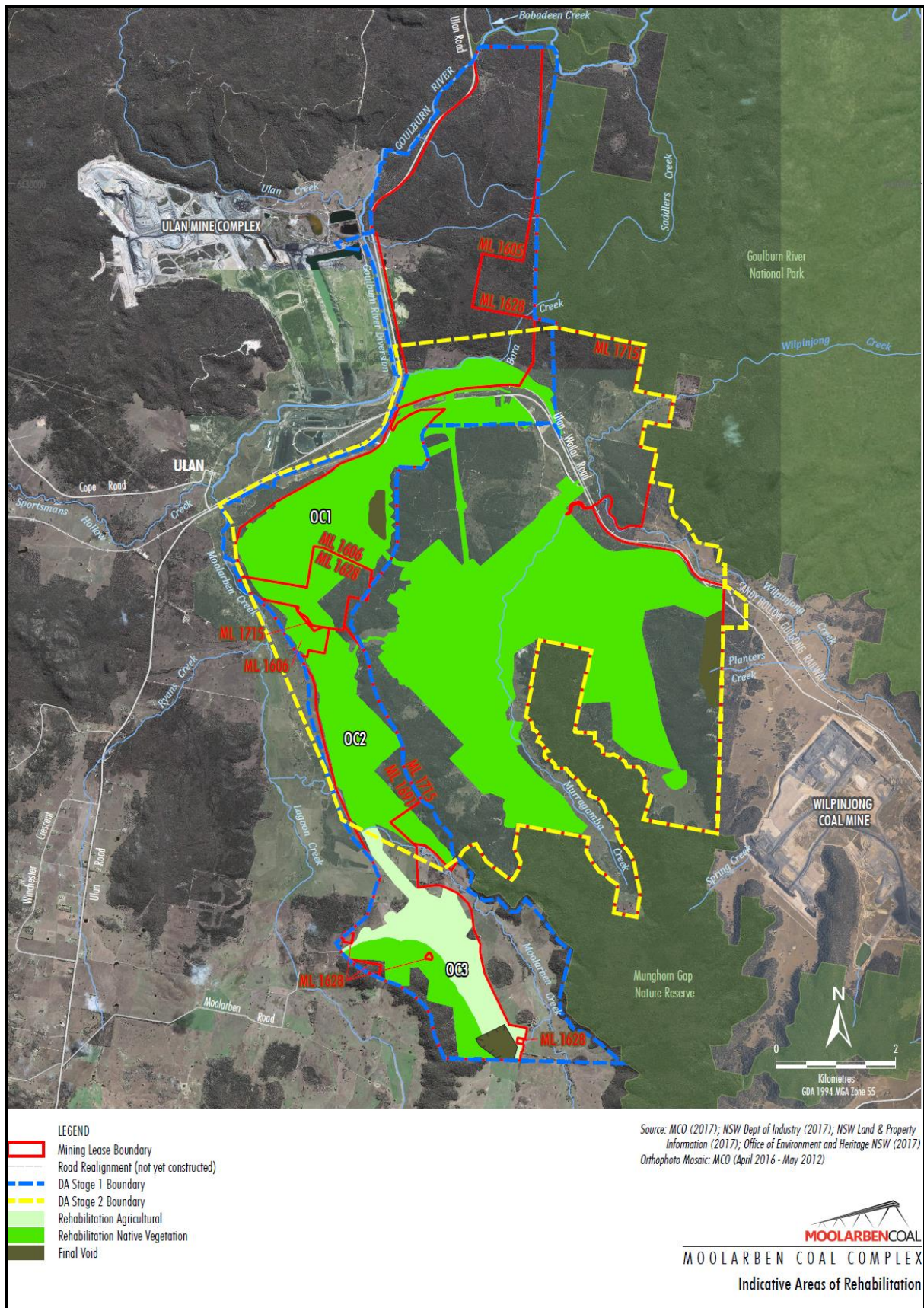


Figure 10.1: Indicative Rehabilitation Areas