

2.13. Landscape Management Plan

A landscape management plan (LMP) has been prepared for the site and is provided as **Appendix G**. The LMP addresses the Director General's Environmental Assessment Requirements for the proposed subdivision and provides management actions, mitigating and monitoring measures which will:

- Conserve flora and fauna and their habitats and in turn conserve and enhance existing wildlife corridor values and connective importance of vegetation on the subject site.
- Mitigate direct and indirect impacts on the wetland.
- Enhance the residential estate by landscaping treatments and use of species which will complement the remnant vegetation of the wetland and excludes the use of species considered likely to cause future weed management problems.

The site contains four vegetation communities – mangrove riparian forest, saltmarsh, melaleuca/casuarina swamp forest, and cleared land (disturbed grassland) with scattered eucalypts and melaleucas. Retention and enhancement vegetation contained within the 6(a) and 7(c) zoned areas is provided for in the LMP and aims to improve ecological habitat and the long term sustainability of the wetland.

The LMP utilises the information provided in the flora and fauna assessment undertaken by Oregon Pty Ltd (April 2007) which identified a number of potential direct and indirect impacts associated with residential development. These being habitat removal, habitat fragmentation, habitat modification, barrier effects and road strike. The proposed residential subdivision has been designed to mitigate these impacts by:

- Minimising habitat removal, fragmentation, creation of edge and barrier effects and potential for road strike by excluding the wetland/saltmarsh vegetation from the subdivision area and placing it within a Public Reserve for the protection and management by Greater Taree City Council.
- Providing for a buffer zone to the wetland and drainage line by the establishment of the Public Reserve.
- Minimising habitat modification from alteration of nutrient levels, water quality and hydrological regimes by the form and extent of the subdivision and the proposed implementation of the Concept Stormwater Plan (*Appendix D*).
- Defining a 'Landscape Concept' which utilises local native species as a theme so as to avoid long term problems with environmental weeds and encroachments into environmentally sensitive areas.
- Providing strategic fencing (to restrict vehicle access) and interpretive signage to mitigate predicted direct human impacts associated with garden refuse dumping and uncontrolled use of BMX bicycles and motorcycles and vehicles on the saltmarsh and wetland once the area changes into public ownership.

The LMP provides a blueprint for the management of each land component of the site:

- Saltmarsh/Wetland - conservation and enhancement
- Park areas including pathways - amenity and shade
- Stormwater controls
- Shareways and streets

All plantings have been designed so as to ensure no conflict with required bushfire asset protection zones.



Figure 1 Salt Mash

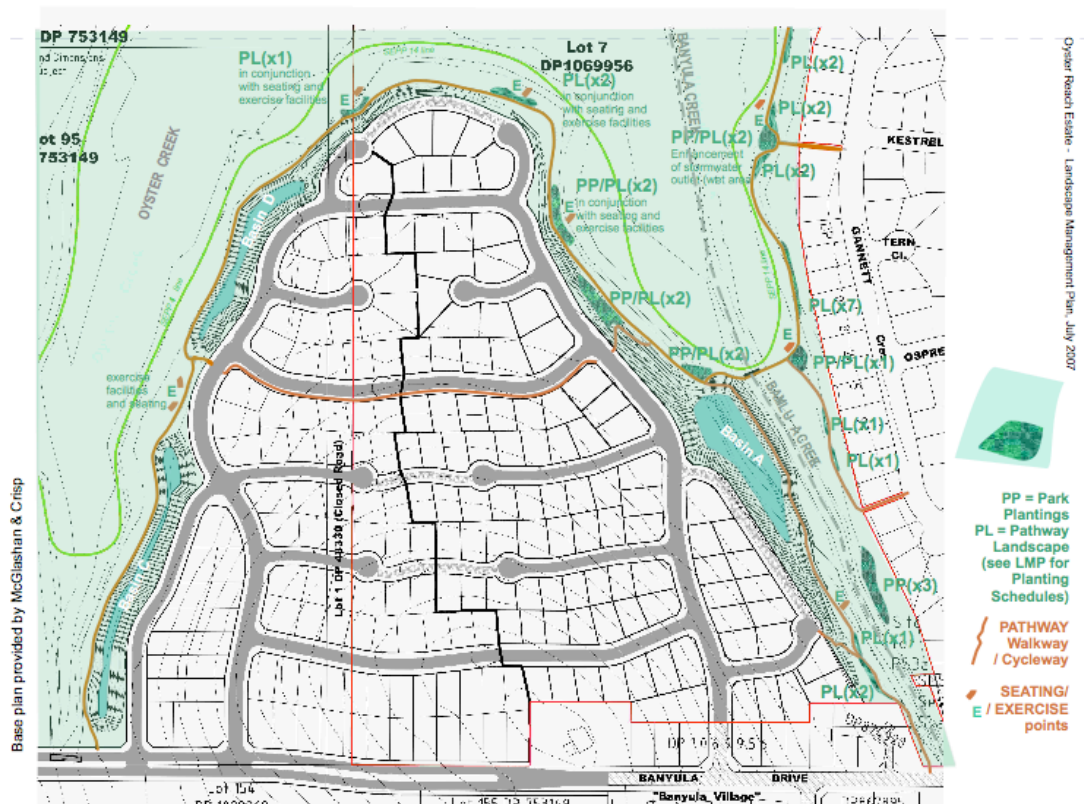


Figure 2 Public Reserve landscape and pathways.