

APPENDIX 3.

ABORIGINAL HERITAGE SITE DATA²⁰

²⁰ For new sites identified and recording during the present survey (including several marginally outside of the investigation area) and re-recordings of several previously reported sites.

Newly recorded and re-recorded open artefact sites:

Site Name	Landform Element	Slope	Distance to Water	Ground Disturbance	Visible Extent of Evidence: Length (m)	Visible Extent of Evidence: Width (m)	Visible Locus Area (m ²)	Mean Archaeological Visibility of Locus (%)	Effective Locus Area (m ²)	# of Artefacts	# of Artefacts/m ² of Effective Locus Area	Sub-Surface Deposit	Comments	MGA Reference
WCP 1	spur crest	level - very gentle	>50	low	250	130	32500	10	3250	159	0.049	probable	high research potential with probable sub-surface deposits; uncertain of potential depth of deposits as >1m wombat hole; broad low elevated open crest or terrace immediately east of Cumbo Creek; many more artefacts obscured by vegetation; only visible artefacts were identified due to vehicle track, erosion scours and animal tracks; some rock stockpiles but provenance of collected material uncertain; includes previous site on road (WCP1); mostly low ground disturbance; available stone materials quartz and tuffaceous	772810: 6418120
WCP 70	ridge crest	level - very gentle	>50	mod	1	1	1	90	1	1	1.111	unlikely	site WCP 70 as recorded by Navin Officer; grassy area with ground disturbance including erosion, cattle and vegetation removal; two quartz pebbles identified but not artefacts; low research potential and unlikely to be sub-surface deposits	771930: 6417903
WCP 437	spur crest	level - very gentle	>50	mod	1	0.3	0.3	80	0.2	2	8.333	possible	moderate ground disturbance due to vegetation removal, animal track and Telstra cable; low research potential for possible sub-surface deposits; low quality quartz gravel present; 6m south of fence bordering Ulan-Wollar Road	769210: 6421029
WCP 438	simple slope	gentle	>50	mod	180	15	2700	80	2160	27	0.012	possible	low research potential; some distance from creek; on a gentle slope 75m to gate on main vehicle track from eastern most artefact; site WCP 123 still present at gate, east of this site; grassy area with moderate ground disturbance due to vehicle track, vegetation removal and erosion; site mostly extends east of the modification investigation area	767407: 6419032

Site Name	Landform Element	Slope	Distance to Water	Ground Disturbance	Visible Extent of Evidence: Length (m)	Visible Extent of Evidence: Width (m)	Visible Locus Area (m ²)	Mean Archaeological Visibility of Locus (%)	Effective Locus Area (m ²)	# of Artefacts	# of Artefacts/m ² of Effective Locus Area	Sub-Surface Deposit	Comments	MGA Reference
WCP 439	simple slope	mod	>50	low	8	2	16	70	11	2	0.180	possible	cleared pastoral area; slightly moderate slope; low research potential; grassy area used for pastoral practices; erosion and vegetation removal; stone materials available are tuff and quartz, with abundant tuffaceous material eroding from hillslope; artefact #1 12m north of fence (from 5m west of tree/change in fence direction)	767332: 6418374
WCP 440	simple slope	mod	>50	low	1	1	1	70	0.7	1	1.428	possible	cleared pastoral area north of fenceline; low research potential; grassy area used for pastoral practices; erosion and vegetation removal; stone materials available are tuff and quartz, with abundant tuffaceous material eroding from hillslope; artefact located 8m north of fence, 11m east of point where fence changes direction	767415: 6418365
WCP 441	simple slope	mod	>50	low	1	1	1	50	0.5	1	2.000	probable	low-moderate research potential with probable sub-surface deposits to a depth of <0.5m; edge of near level small spur, overlooks valley; grass, bush and regrowth pine cover area; low-moderate ground disturbance with some erosion and vegetation removal; stone materials available are tuff and quartz	767691: 6418274
WCP 442	ridge crest	level - very gentle	>50	mod	2	1	2	60	1.2	10	8.333	unlikely	broad crest; also natural shattered quartz in other exposures; grassy area with moderate ground disturbance due to stock, erosion and vegetation removal; sandstone outcrops; low research potential and unlikely to be sub-surface deposits	771916: 6417762
WCP 443	simple slope	gentle	>50	high	1	1	1	80	0.8	1	1.250	unlikely	located on vehicle track; highly disturbed area	772119: 6417750
WCP 444	simple slope	gentle	>50	mod	14	2	28	50	14	2	0.143	possible	broad almost very gentle simple slope; artefacts on track north of fence east of dam; grassy area with moderate ground disturbance due to track and vegetation removal; materials available include quartz and tuff; low research potential	773310: 6417737

Site Name	Landform Element	Slope	Distance to Water	Ground Disturbance	Visible Extent of Evidence: Length (m)	Visible Extent of Evidence: Width (m)	Visible Locus Area (m ²)	Mean Archaeological Visibility of Locus (%)	Effective Locus Area (m ²)	# of Artefacts	# of Artefacts/m ² of Effective Locus Area	Sub-Surface Deposit	Comments	MGA Reference
WCP 445	simple slope	gentle	>50	mod - high	1	1	1	90	0.9	1	1.111	possible	low research potential; probably shallow deposit; grassy area with moderate-high ground disturbance due to erosion adjacent to dam; material available include tuff and quartz; located 15m west of dam and 15m north of fence in erosion scour	773212: 6417765
WCP 446	spur crest	level - very gentle	>50	low - mod	1	1	1	30	0.3	1	3.333	possible	broad low open ridge; very gentle; marginally outside modification study area; grassy area with low-moderate ground disturbance due to vegetation removal, erosion and pastoral use; stone materials available include tuffaceous stone and minor amounts of quartz; low research potential; probably shallow deposits	773020: 6418012
WCP 447	drainage depression	gentle	<50	low	1	1	1	50	0.5	2	4.000	probable	45m east of road and 17 metres south of Eucalypt tree, near regrowth scrub	772945: 6418415
WCP 448	simple slope	gentle	>50	high	60	3	180	80	144	3	0.021	possible	low research potential; probably shallow deposit; high impacts - located on vehicle track opposite Upper Cumbo Road; quartz and tuff stone available; Box forest; site probably continues further west along road but not inspected as outside modification study area	774470: 6415964

SITE NAME: WCP1 (OEH #36-3-0575)

Site Type: *Artefact scatter*
 Date Recorded: *25/1/2013*
 Recorder: *Peter Kuskie*

MGA Grid Reference: *772810:6418120*
 Topographic Map: *Wollar 8833-2N*

Landform Element: *Spur crest*
 Slope: *Level - very gentle*
 Distance to Water: *>50*

Vegetation: *Cleared*
 Ground Disturbance: *Low*

Visible Extent of Surface Exposures: Length (m)	Visible Extent of Surface Exposures: Width (m)	Visible Extent of Evidence: Length (m)	Visible Extent of Evidence: Width (m)	Visible Locus Area (m ²)	Mean Surface Visibility of Locus (%)	Mean Arch. Visibility of Locus (%)	Effective Locus Area (m ²)	# of Artefacts	# of Artefacts per m ² of Effective Locus Area	Sub-Surface Deposit
varies	varies	250	130	32500	10	10	3250	159	0.049	probable

Artefact Database:

Artefact #	Colour	Stone Material	Lithic Item Type	Dimensions (mm)	Cortex Amount (%)	Cortex Type	Comments	MGA Easting	MGA Northing
1	white	crystal quartz	core	35x21x10			on main vehicle track, south of junction; south-west end of site but areas further south not examined because outside study area; 1 scar 1 platform	772777	6418109
2	grey	chert	core	42x28x21	5	terr	south end of site in fenced paddock south-east of gates; four scars and four platforms	772800	6418097
3	cream	tuff	lithic fragment	16x14x8			1m south of fence	772800	6418112
4	red	jasper	flake	24x17x8	10	peb	along fenceline; platform preparation; possible edge damage at platform	772800	6418113
5	white	quartz	lithic fragment	12x10x4				772800	6418113
6	cream/orange	tuff	flake	24x38x10	5	terr	1m south of fence; example of use of local material; broad squat flake	772800	6418113
7	white	quartz	lithic fragment	10x6x3			on fence	772806	6418112
8	cream	tuff	flake	29x15x8	20	terr	on fence	772806	6418112
9	white	quartz	core fragment	27x17x16			in corridor between two fences	772800	6418114
10	white	quartz	flake - longitudinal	14x9x4			in corridor between two fences	772800	6418114
11	white	quartz	flake	13x6x5			in corridor between two fences	772800	6418114
12	yellow	porphyritic rhyolite	core	63x48x34	60	peb	one flake scar and one platform; in corridor ('corral') between two fences	772800	6418114
13	grey/cream	tuff	lithic fragment	15x12x4			in corridor between two fences	772800	6418114
14	brown	tuff	flake	33x26x5			in corridor between two fences	772804	6418116
15	white	quartz	lithic fragment	12x8x6			in corridor between two fences	772804	6418116
16	translucent	crystal quartz	core fragment	22x13x10			in corridor between two fences	772804	6418116
17	white	quartz	core	24x23x13			in corridor between two fences; four flake scars and three platforms	772804	6418116
18	red	tuff	lithic fragment	22x14x13			in corridor between two fences	772804	6418116
19	red	tuff	flake	20x13x6			in corridor between two fences	772804	6418116
20	cream	tuff	flake	20x15x9			in corridor between two fences	772804	6418116
21	white	quartz	flake - distal	18x16x6			in corridor between two fences	772804	6418116
22	white	quartz	core	25x22x13	30	peb	in corridor between two fences; 3 flake scars and three platforms	772804	6418116
23	dark grey	chert	flake - longitudinal	35x34x17	30	peb	in corridor between two fences; cryptocrystalline	772808	6418117

Artefact #	Colour	Stone Material	Lithic Item Type	Dimensions (mm)	Cortex Amount (%)	Cortex Type	Comments	MGA Easting	MGA Northing
24	translucent	crystal quartz	flake	6x6x2			in corridor between two fences	772808	6418117
25	white/orange	quartz	lithic fragment	15x15x5			in corridor between two fences	772808	6418117
26	translucent	crystal quartz	flake - distal	11x7x3			east end of site and exposure in corridor between two fences	772810	6418116
27	grey/cream	chert	core	22x21x13			on fenceline; artefacts #27- 59 north of fence/corral and east of road and west of other fenceline	772798	6418120
28	white	quartz	flake - longitudinal	17x17x7	90	peb		772798	6418120
29	dark grey	petrified wood	core fragment	36x20x15	10	terr	north side of fence	772803	6418120
30	white	quartz	lithic fragment	10x8x5			north side of fence	772803	6418120
31	white	quartz	core	20x16x14			three flake scars and three platforms	772803	6418120
32	white	quartz	core	30x25x16	50	peb	three flake scars and three platforms	772803	6418120
33	red	tuff	core	34x20x14	10	tab	one flake scar and one platform	772803	6418120
34	cream/yellow/orange	petrified wood	flake	35x17x13	40	terr	2m north of fence	772808	6418118
35	grey	tuff	flake	30x14x5				772808	6418118
36	white	quartz	core	28x17x12			one flake scar and one platform	772808	6418118
37	white	quartz	core	19x12x10	30	peb	one flake scar and one platform	772808	6418118
38	white	quartz	flake	29x22x12	80	peb		772808	6418118
39	grey	tuff	retouched piece - utilised	20x13x5			edge damage 10mm on margin; retouch or edge damage 8mm concave end margin; retouch along lateral margin	772808	6418118
40	cream	tuff	flake	34x21x10				772808	6418118
41	cream	tuff	flake - proximal - utilised	20x13x6			distal end snapped; notch; edge damage along lateral margin 13mm; other margin for 18mm	772802	6418123
42	white	quartz	core	25x18x18			four flake scars and two platforms	772802	6418123
43	cream	tuff	flake	25x12x8				772806	6418122
44	cream	porphyritic rhyolite	geometric microlith	23x15x6			probable geometric microlith but most of chord snapped off	772806	6418122
45	white	quartz	flake	25x13x9	80	peb		772806	6418122
46	white	quartz	flake - proximal	18x14x6				772806	6418122
47	white	quartz	flake - distal	12x10x5				772806	6418122
48	white	quartz	flake - longitudinal	16x8x4				772806	6418122
49	cream	chert	flake - proximal	20x12x4				772806	6418122
50	white	quartz	core	24x19x7	50	peb	two flake scars and two platforms	772807	6418120
51	cream	tuff	flake - distal - utilised	17x9x4			minor edge damage along lateral margin	772807	6418120
52	cream	tuff	flake	10x8x2				772807	6418120
53	cream	tuff	flake - distal	12x10x2				772807	6418120
54	cream	tuff	flake	13x10x2				772807	6418120
55	white	crystal quartz	core fragment	19x12x8				772807	6418120
56	white	crystal quartz	core fragment	22x18x12				772807	6418120
57	white	quartz	core	34x32x15			three flake scars and two platforms	772807	6418120
58	cream	tuff	lithic fragment	10x8x2				772807	6418126
59	cream	chert	flake	15x20x3					
60	white	quartz	flake	12x8x3			along vehicle track, beginning at north end with #60 and heading south	772869	6418276
61	translucent	crystal quartz	flake	28x24x9			20m south along road from #60	772853	6418259
62	white	quartz	core	30x28x19			eight flake scars, one platform and unidirectional use	772853	6418259
63	white	quartz	flake	20x15x10			1m south of #61, 62	772853	6418258
64	white	quartz	lithic fragment	10x6x3			2m south of #63	772853	6418256
65	white	quartz	flake	17x6x6			2m south of #64	772853	6418256
66	white	quartz	lithic fragment	18x11x5			2m south of #65	772853	6418256
67	white	quartz	lithic fragment	17x10x8			1m south of #66 along road	772853	6418255

Artefact #	Colour	Stone Material	Lithic Item Type	Dimensions (mm)	Cortex Amount (%)	Cortex Type	Comments	MGA Easting	MGA Northing
68	white	quartz	core fragment	17x13x10			1m south of #66 along road	772853	6418255
69	grey	quartz	core	24x20x14			1m south of #66 along road; six flake scars and three platforms	772853	6418255
70	white	quartz	core	28x23x10			2m east along road from #69; two flake scars and two platforms	772854	6418252
71	white	quartz	flake	12x5x3			1m south of #69 along road; possible microblade	772851	6418252
72	white	quartz	flake	20x15x7				772851	6418252
73	white	quartz	flake	14x12x5				772851	6418252
74	white	quartz	lithic fragment	15x10x4				772851	6418252
75	white	quartz	lithic fragment	11x6x2				772851	6418252
76	white	quartz	flake - distal	11x10x4				772851	6418252
77	white	quartz	lithic fragment	3x8x2				772851	6418252
78	white	quartz	core	21x16x15			three flake scars and two platforms	772851	6418252
79	purple	tuff	flake	35x28x10			#60-79 along road	772851	6418252
80	cream	chert	tula adze	40x17x9			retouched/utilised longitudinal flake - tula adze slug; in grass 5m west of fence; generally low visibility; 10m north in grass from road and erosion, extensive step/drainage; tula like; retouch 35mm along lateral margin	772860	6418186
81	white	quartz	core	44x26x16	70	peb	10% visibility in grass; one flake scar and one platform	772843	6418176
82	white	quartz	flake	30x22x13	10	peb	5m east of fence near rock piles	772861	6415132
83	cream	tuff	flake	30x23x7			south of rock piles	772874	6418116
84	white	quartz	flake - proximal	15x8x2				772874	6418116
85	cream	tuff	lithic fragment	16x13x4			middle of rock piles	772880	6418139
86	white	quartz	lithic fragment	23x15x9			middle of rock piles	772900	6418142
87	cream	tuff	microblade core	30x30x13			four flake scars and 1 platform; high quality tuff; east of most of the rock piles; east edge of visible site; generally 10% visibility in grass; more artefacts probably deeper below exposed soil	772909	6418126
88	purple	tuff	retouched piece - utilised	17x10x4			#88-96 continuation of artefacts along road, from north to south; edge damage 12mm along lateral margin; 6mm end margin; 12mm other lateral margin	772852	6418251
89	yellow/brown/red	tuff	retouched piece - utilised	26x20x5			adjacent to #88; extensive retouch and edge damage around margins; 20mm/18mm/15mm	772852	6418251
90	white	quartz	flake	18x16x8			3m south along road	772850	6418246
91	white	quartz	lithic fragment	16x16x11				772850	6418246
92	brown/red	tuff	core	80x68x55	5	tab	ten flake scars and three platforms	772850	6418246
93	grey	quartz	core	22x15x10			3m south;	772850	6418243
94	white	quartz	core	30x26x16			2m south; six flake scars and two platforms	772848	6418243
95	grey	chert	retouched flake	25x18x7			notch in lateral margin; retouch/edge damage 15mm/12mm along distal end	772848	6418243
96	grey	acidic volcanic	flake	28x24x10			15m south of #95; 2m west of road; edge damage but may be due to vehicles	772841	6418226
97	cream	chert	flake	17x15x4			#97-138 continuation of artefact cluster north of fence and east of road		
98	translucent	quartz	flake - longitudinal	15x12x5					
99	white	quartz	lithic fragment	26x11x9					
100	grey	chert	flake	24x18x3			6m east of road		

Artefact #	Colour	Stone Material	Lithic Item Type	Dimensions (mm)	Cortex Amount (%)	Cortex Type	Comments	MGA Easting	MGA Northing
101	grey	quartzite pebble	hammerstone	70x60x50	70	peb	split at one end; extreme pounding damage; 1m east of road		
102	white	quartz	lithic fragment	20x10x10					
103	white	quartz	core	28x15x10			one flake scar and one platform; 2m east of road	772797	6418142
104	white	quartz	core fragment	34x22x13			1m east of road	772796	6418142
105	cream	tuff	bondi point	30x10x8			tip of bondi point broken off; possible edge damage; in main cluster of artefacts	772810	6418135
106	white	quartz	lithic fragment	18x13x10				772810	6418135
107	white	quartz	core fragment	20x13x8			one flake scar and one platform	772810	6418135
108	white	quartz	lithic fragment	15x8x4				772810	6418135
109	purple	chert	flake - medial	23x17x4				772810	6418135
110	white	quartz	lithic fragment	10x8x3				772810	6418135
111	white	quartz	flake	17x10x3				772810	6418135
112	cream/red	tuff	lithic fragment	32x23x10	20	terr		772810	6418135
113	white	quartz	lithic fragment	15x10x5				772810	6418135
114	white	quartz	core fragment	12x9x5				772810	6418135
115	translucent	crystal quartz	flake - proximal	9x9x2				772810	6418135
116	white	quartz	flake	14x14x4				772810	6418135
117	white	quartz	lithic fragment	14x8x5				772810	6418135
118	white	quartz	flake - longitudinal	12x8x4				772810	6418135
119	white	quartz	flake	15x16x6				772810	6418135
120	white	quartz	flake	9x9x3				772810	6418135
121	cream/red	tuff	core fragment	33x20x7				772810	6418135
122	white	quartz	lithic fragment	18x6x5				772822	6418146
123	cream/grey	chert	lithic fragment	20x10x8				772823	6418146
124	white	quartz	lithic fragment	18x7x4				772837	6418141
125	white	quartz	core fragment	26x15x13			artefacts #125-138 are on the edge of spur, 1-10m east of road	772809	6418145
126	dark grey	petrified wood	flake - distal	18x13x4				772809	6418145
127	grey	chert	backed artefact - portion	18x7x5			tip and chord snapped	772809	6418145
128	pink	tuff	core	47x28x17	40	terr	three flake scars and two platforms	772809	6418145
129	white	quartz	lithic fragment	12x10x4				772809	6418145
130	grey/cream	acidic volcanic	core	54x30x21			five flake scars and three platforms; heavy step termination	772813	6418155
131	white	quartz	flake	15x14x6				772813	6418155
132	white	quartz	flake	20x15x5				772813	6418155
133	translucent	quartz	flake	7x7x2				772813	6418155
134	cream	chert	flake	12x10x4				772813	6418155
135	white	quartz	core	45x33x25	10	terr	three flake scars and three platforms	772821	6418159
136	white	quartz	core fragment	24x18x10	30	peb		772816	6418166
137	white	quartz	core	39x30x20	5	peb	four flake scars and two platforms	772821	6418169
138	white	quartz	flake	21x15x8				772821	6418177
139	white	quartz	core	25x21x16			four flake scars and three platforms; artefacts #139-160 at south part of site on east verge of road	772820	6418182
140	white	quartz	microblade	15x6x4			classic microblade	772820	6418182
141	white	quartz	flake	16x14x3				772820	6418182
142	white	quartz	core fragment	20x16x8	20	terr		772820	6418182
143	white	quartz	core	33x19x16	10	terr	three flake scars and two platforms	772820	6418182
144	white	quartz	flake	13x11x8				772820	6418182
145	white	quartz	flake - longitudinal	16x12x2				772820	6418182
146	white	quartz	lithic fragment	19x10x5				772820	6418182
147	white	quartz	lithic fragment	22x15x9	20	peb		772820	6418182
148	grey	chert	flake	40x26x10	10	peb	very sugary chert	772820	6418182

Artefact #	Colour	Stone Material	Lithic Item Type	Dimensions (mm)	Cortex Amount (%)	Cortex Type	Comments	MGA Easting	MGA Northing
149	white	quartz	core fragment	20x14x12				772824	6418199
150	purple	tuff	flake - distal	28x20x10			minor edge damage	772824	6418199
151	white	quartz	core fragment	24x16x13				772824	6418199
152	red	tuff	flake	30x28x8	5	tab		772824	6418199
153	white	quartz	lithic fragment	19x14x4				772824	6418199
154	white	quartz	flake - longitudinal	18x9x5				772824	6418199
155	white	quartz	flake	25x21x8	100	peb		772835	641821
156	grey	tuff	lithic fragment	16x12x6				772838	6418215
157	red	tuff	retouched piece	55x30x16	30	tab	possible 35mm retouch along lateral margin	772902	6418361
158	white	quartz	core	25x23x13			one flake scar and one platform	772902	6418354
159	cream	chert	flake	25x17x5			#158-160 all along east verge of road	772902	6418354

Additional Comments:

- ❑ Originally recorded by Navin Officer (2005);
- ❑ High research potential with probable sub-surface deposits;
- ❑ Uncertain of potential depth of deposits as >1m wombat hole;
- ❑ Broad low elevated open crest or terrace immediately east of Cumbo Creek;
- ❑ Many more artefacts obscured by vegetation;
- ❑ Only visible artefacts were identified due to vehicle track, erosion scours and animal tracks;
- ❑ Some rock stockpiles but provenance of collected material uncertain;
- ❑ Includes previous site on road (WCP1);
- ❑ Mostly low ground disturbance;
- ❑ Available stone materials quartz and tuffaceous.

Site Location: WCP1



Photographs: WCP1



View north across WCP1 from southern end of site.



View north across WCP1 from southern end of site and main cluster of artefacts north of fenced 'corral', with Cumbo Creek visible to left.



View north across main cluster of artefacts north of fenced 'corral'.



View south of artefacts along and near road, from near northern end of site (Cumbo Creek visible to right)



Jasper flake (artefact #4; left) and chert tula adze (artefact #80; right).

SITE NAME: WCP70 (OEH #36-3-0644)

Site Type: *Isolated artefact* MGA Grid Reference: *771930:6417903*
 Date Recorded: *5/3/2013* Topographic Map: *Wollar 8833-2N*
 Recorder: *Peter Kuskie*

Landform Element: *Ridge crest* Vegetation: *Cleared*
 Slope: *Level - very gentle* Ground Disturbance: *Moderate*
 Distance to Water: *>50*

Visible Extent of Surface Exposures: Length (m)	Visible Extent of Surface Exposures: Width (m)	Visible Extent of Evidence: Length (m)	Visible Extent of Evidence: Width (m)	Visible Locus Area (m ²)	Mean Surface Visibility of Locus (%)	Mean Arch. Visibility of Locus (%)	Effective Locus Area (m ²)	# of Artefacts	# of Artefacts per m ² of Effective Locus Area	Sub-Surface Deposit
12	2	1	1	1	90	90	1	1	1.111	unlikely

Artefact Database:

Artefact #	Colour	Stone Material	Lithic Item Type	Dimensions (mm)	Cortex Amount (%)	Cortex Type	Comments	MGA Easting	MGA Northing
1	white	quartz	retouched flake	33x24x8			retouch 15mm and 12mm along lateral margin; same artefact as recorded by Navin Office as site WCP 70	771930	6417903

Additional Comments:

- ☐ Originally recorded by Navin Officer (2005);
- ☐ Grassy area with ground disturbance including erosion, cattle and vegetation removal;
- ☐ Two quartz pebbles also identified but not artefacts;
- ☐ Low research potential and unlikely to be sub-surface deposits.

Site Location: WCP70



Photograph: WCP70



SITE NAME: WCP437

Site Type:	Artefact scatter	MGA Grid Reference:	769210:6421029
Date Recorded:	4/3/2013	Topographic Map:	Wollar 8833-2N
Recorder:	Peter Kuskie		
Landform Element:	Spur crest	Vegetation:	Cleared
Slope:	Level - very gentle	Ground Disturbance:	Moderate
Distance to Water:	>50		

Visible Extent of Surface Exposures: Length (m)	Visible Extent of Surface Exposures: Width (m)	Visible Extent of Evidence: Length (m)	Visible Extent of Evidence: Width (m)	Visible Locus Area (m ²)	Mean Surface Visibility of Locus (%)	Mean Arch. Visibility of Locus (%)	Effective Locus Area (m ²)	# of Artefacts	# of Artefacts per m ² of Effective Locus Area	Sub-Surface Deposit
50+	0.3	1	0.3	0.3	80	80	0.2	2	8.333	possible

Artefact Database:

Artefact #	Colour	Stone Material	Lithic Item Type	Dimensions (mm)	Cortex Amount (%)	Cortex Type	Comments	MGA Easting	MGA Northing
1	white	quartz	flake	19x14x5			distal end snapped; on animal track	769210	6421029
2	white	quartz	lithic fragment	22x13x6			on track 1m east from #1	769211	6421029

Additional Comments:

- ☐ Moderate ground disturbance due to vegetation removal, animal track and Telstra cable;
- ☐ 6 metres south of fence bordering Ulan-Wollar Road;
- ☐ Low quality quartz gravel present;
- ☐ Low research potential.

Site Location: WCP437



Photograph: WCP437 (view north to Ulan - Wollar Road and railway)



SITE NAME: WCP438

Site Type: *Artefact scatter*
 Date Recorded: *24/1/2013*
 Recorder: *Peter Kuskie*

MGA Grid Reference: *767407:6419032*
 Topographic Map: *Wollar 8833-2N*

Landform Element: *Simple slope*
 Slope: *Gentle*
 Distance to Water: *>50*

Vegetation: *Cleared, Forested*
 Ground Disturbance: *Moderate*

Visible Extent of Surface Exposures: Length (m)	Visible Extent of Surface Exposures: Width (m)	Visible Extent of Evidence: Length (m)	Visible Extent of Evidence: Width (m)	Visible Locus Area (m ²)	Mean Surface Visibility of Locus (%)	Mean Arch. Visibility of Locus (%)	Effective Locus Area (m ²)	# of Artefacts	# of Artefacts per m ² of Effective Locus Area	Sub-Surface Deposit
180+	10+	180	15	2700	80	80	2160	27	0.012	possible

Artefact Database:

Artefact #	Colour	Stone Material	Lithic Item Type	Dimensions (mm)	Cortex Amount (%)	Cortex Type	Comments	MGA Easting	MGA Northing
1	white/pink	quartz	flake - distal	20x15x5			on track	767407	6419032
2	white	quartz	lithic fragment	30x20x5			8m north of #1; off the track	767405	6419040
3	translucent	crystal quartz	flake	20x10x3			16m east along track from #1	767423	6419037
4	white	quartz	flake - longitudinal	30x12x8			flake snapped in two; conjoin; 6m east along track from #3	767429	6419037
5	white	quartz	flake - distal	15x10x5			1m north of #4 along track	767429	6419038
6	white	quartz	flake - distal	15x10x2			1m east of #4 on track	767429	6419038
7	white	quartz	lithic fragment	15x10x5			2m north of #4; just off the track	767429	6419040
8	white	quartz	lithic fragment	12x8x2			3m east of #7 along track	767434	6419037
9	white	quartz	lithic fragment	30x11x10				767434	6419037
10	grey	chert	retouched piece	11x12x2			retouch along length of lateral margin; same location as #8-9	767434	6419037
11	brown	tuff	flake	30x25x7			12m east of #8-10	767444	6419039
12	white	quartz	flake - longitudinal	10x5x2			2m east of #11	767446	6419039
13	white	quartz	lithic fragment	28x18x5			3m north of #12	767446	6419042
14	brown	tuff	core	40x30x15	10	terr	16m east of #10; six scars and two platforms	767459	6419047
15	purple	tuff	core	50x50x10	40	terr	25m east along track from #14; eight scars and three platforms; mineral inclusions	767486	6419045
16	white	quartz	flake	20x20x2			39m east along track from #15	767529	6419049
17	white/orange	chert	core	20x11x10			1m south of #16; five flake scars and two platforms	767529	6419048
18	black	chert	flake - distal	13x10x4			13m east along track from #17	767543	6419052
19	white	quartz	flake	20x20x2			3m north-east of #18	767544	6419054
20	black	chert	flake	30x15x5			2m east of #19	767546	6419054
21	black	chert	flake	20x15x4	10	terr	1m north of #20	767546	6419055
22	black	chert	flake - distal	30x12x5			2m north-east of #21	767547	6419056
23	brown/red	tuff	flake	27x18x3			2m east from #22	767549	6419056
24	white	quartz	core	20x15x10			6m north of #23; three flake scars and one platform	767552	6419058
25	white	quartz	core fragment	25x20x5			5m east of #23	767553	6419056
26	grey	chert	lithic fragment	6x5x2			2m north-east of #25	767557	6419055
27	black	chert	lithic fragment	10x10x1				767557	6419055

Additional Comments:

- ❑ On a gentle slope 75m to gate on main vehicle track from eastern most artefact;
- ❑ Site WCP 123 still present at gate, east of this site;
- ❑ Grassy area with moderate ground disturbance due to vehicle track, vegetation removal and erosion;
- ❑ Site mostly extends east of the modification investigation area
- ❑ Some distance from creek;
- ❑ Low research potential.

Site Location: WCP438



Photograph: WCP438 (view north-east across site)



SITE NAME: WCP439

Site Type:	Artefact scatter	MGA Grid Reference:	767332:6418374
Date Recorded:	23/1/2013	Topographic Map:	Wollar 8833-2N
Recorder:	Peter Kuskie		
Landform Element:	Simple slope	Vegetation:	Cleared
Slope:	Moderate	Ground Disturbance:	Low
Distance to Water:	>50		

Visible Extent of Surface Exposures: Length (m)	Visible Extent of Surface Exposures: Width (m)	Visible Extent of Evidence: Length (m)	Visible Extent of Evidence: Width (m)	Visible Locus Area (m ²)	Mean Surface Visibility of Locus (%)	Mean Arch. Visibility of Locus (%)	Effective Locus Area (m ²)	# of Artefacts	# of Artefacts per m ² of Effective Locus Area	Sub-Surface Deposit
varies	varies	8	2	16	70	70	11	2	0.180	possible

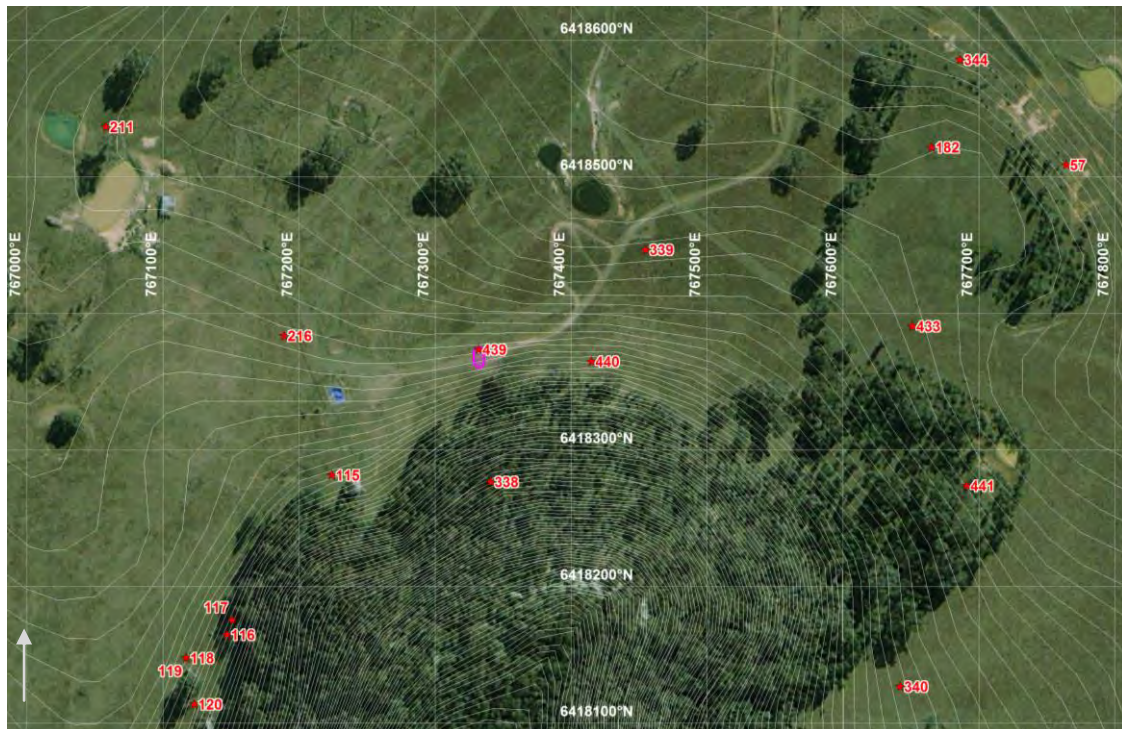
Artefact Database:

Artefact #	Colour	Stone Material	Lithic Item Type	Dimensions (mm)	Cortex Amount (%)	Cortex Type	Comments	MGA Easting	MGA Northing
1	white	quartz	core	30x25x10			three flake scars	767330	6418364
2	white	quartz	lithic fragment	15x10x5			medial portion	767333	6418372

Additional Comments:

- ☐ Cleared pastoral area;
- ☐ Slightly moderate slope;
- ☐ Grassy area used for pastoral practices;
- ☐ Erosion and vegetation removal;
- ☐ Stone materials available are tuff and quartz, with abundant tuffaceous material eroding from hillslope;
- ☐ Artefact #1 12 metres north of fence (from 5 metres west of tree/change in fence direction);
- ☐ Low research potential.

Site Location: WCP439



Photograph: WCP439 (view east)



SITE NAME: WCP440

Site Type:	Isolated artefact	MGA Grid Reference:	767415:6418365
Date Recorded:	23/1/2013	Topographic Map:	Wollar 8833-2N
Recorder:	Peter Kuskie		
Landform Element:	Simple slope	Vegetation:	Cleared
Slope:	Moderate	Ground Disturbance:	Low
Distance to Water:	>50		

Visible Extent of Surface Exposures: Length (m)	Visible Extent of Surface Exposures: Width (m)	Visible Extent of Evidence: Length (m)	Visible Extent of Evidence: Width (m)	Visible Locus Area (m ²)	Mean Surface Visibility of Locus (%)	Mean Arch. Visibility of Locus (%)	Effective Locus Area (m ²)	# of Artefacts	# of Artefacts per m ² of Effective Locus Area	Sub-Surface Deposit
varies	varies	1	1	1	70	70	0.7	1	1.428	possible

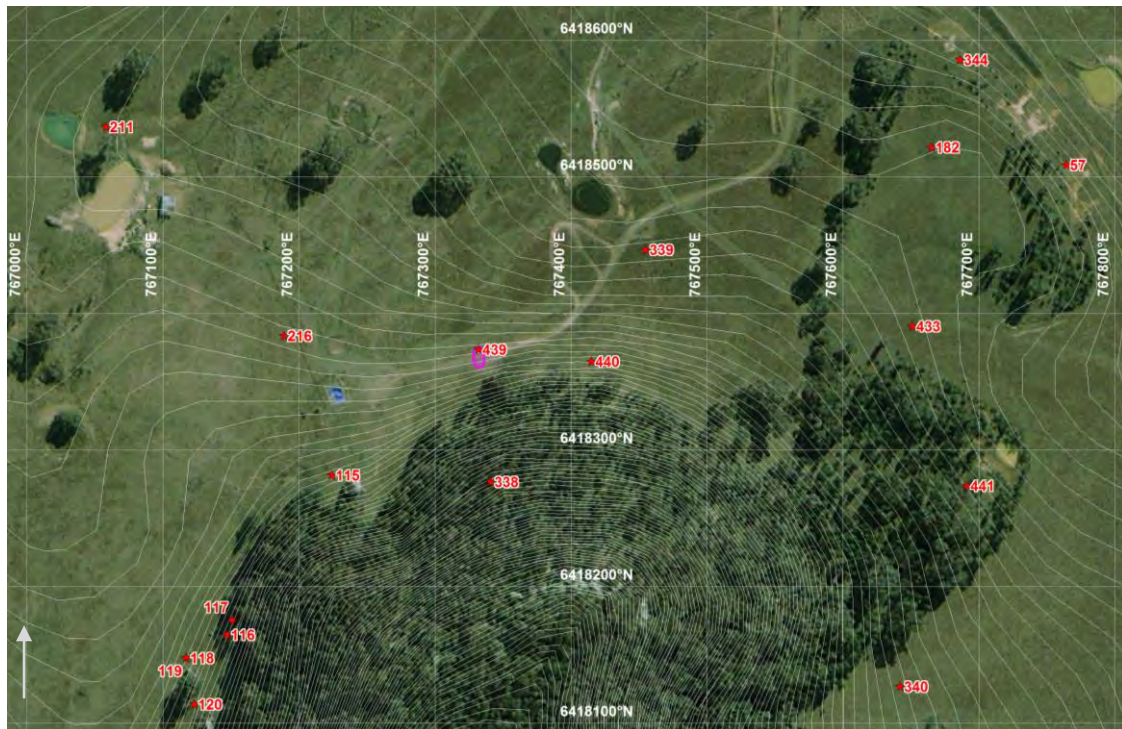
Artefact Database:

Artefact #	Colour	Stone Material	Lithic Item Type	Dimensions (mm)	Cortex Amount (%)	Cortex Type	Comments	MGA Easting	MGA Northing
1	white	quartz	flake	48x18x10	10	terr		767415	6418365

Additional Comments:

- ☐ Cleared pastoral area north of fenceline;
- ☐ Grassy area used for pastoral practices;
- ☐ Erosion and vegetation removal;
- ☐ Stone materials available are tuff and quartz, with abundant tuffaceous material eroding from hillslope;
- ☐ Artefact located 8 metres north of fence, 11 metres east of point where fence changes direction;
- ☐ Low research potential.

Site Location: WCP440



Photograph: WCP440 (view north)



SITE NAME: WCP441

Site Type:	Isolated artefact	MGA Grid Reference:	767691:6418274
Date Recorded:	23/1/2013	Topographic Map:	Wollar 8833-2N
Recorder:	Peter Kuskie		
Landform Element:	Simple slope	Vegetation:	Cleared
Slope:	Moderate	Ground Disturbance:	Low
Distance to Water:	>50		

Visible Extent of Surface Exposures: Length (m)	Visible Extent of Surface Exposures: Width (m)	Visible Extent of Evidence: Length (m)	Visible Extent of Evidence: Width (m)	Visible Locus Area (m ²)	Mean Surface Visibility of Locus (%)	Mean Arch. Visibility of Locus (%)	Effective Locus Area (m ²)	# of Artefacts	# of Artefacts per m ² of Effective Locus Area	Sub-Surface Deposit
varies	varies	1	1	1	50	50	0.5	1	2.000	possible

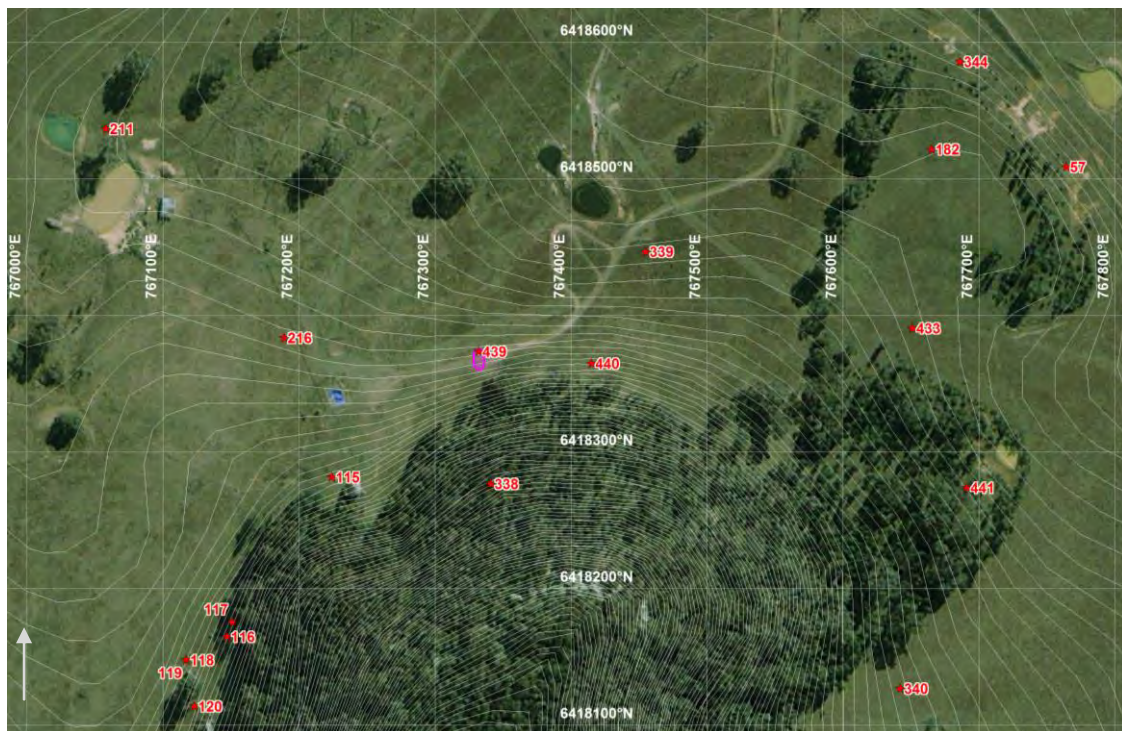
Artefact Database:

Artefact #	Colour	Stone Material	Lithic Item Type	Dimensions (mm)	Cortex Amount (%)	Cortex Type	Comments	MGA Easting	MGA Northing
1	white	quartz	flake	28x25x8				767691	6418274

Additional Comments:

- ☐ Edge of near level small spur, overlooks valley;
- ☐ Grass, bush and regrowth pine cover area;
- ☐ Low-moderate ground disturbance with some erosion and vegetation removal;
- ☐ Stone materials available are tuff and quartz;
- ☐ Low - moderate research potential with probable sub-surface deposits to a depth of <0.5 metres.

Site Location: WCP441



Photograph: WCP441 (view north) (inset - quartz flake)



SITE NAME: WCP442

Site Type:	Artefact scatter	MGA Grid Reference:	771916:6417762
Date Recorded:	5/3/2013	Topographic Map:	Wollar 8833-2N
Recorder:	Peter Kuskie		
Landform Element:	Ridge crest	Vegetation:	Cleared
Slope:	Level - very gentle	Ground Disturbance:	Moderate
Distance to Water:	>50		

Visible Extent of Surface Exposures: Length (m)	Visible Extent of Surface Exposures: Width (m)	Visible Extent of Evidence: Length (m)	Visible Extent of Evidence: Width (m)	Visible Locus Area (m ²)	Mean Surface Visibility of Locus (%)	Mean Arch. Visibility of Locus (%)	Effective Locus Area (m ²)	# of Artefacts	# of Artefacts per m ² of Effective Locus Area	Sub-Surface Deposit
4	1	2	1	2	60	60	1.2	10	8.333	unlikely

Artefact Database:

Artefact #	Colour	Stone Material	Lithic Item Type	Dimensions (mm)	Cortex Amount (%)	Cortex Type	Comments	MGA Easting	MGA Northing
1	white	quartz	flake - distal	14x12x4				771916	6417762
2	white	quartz	retouched piece	18x13x8			retouch/edge damage; 10mm distal end; microblade in shape	771916	6417762
3	white	quartz	lithic fragment	24x10x7				771916	6417762
4	translucent	crystal quartz	blade - medial	20x16x7				771916	6417762
5	white	quartz	lithic fragment	15x8x6				771916	6417762
6	white	quartz	core fragment	20x15x7				771916	6417762
7	white	quartz	flake	25x17x7				771916	6417762
8	translucent	quartz	core	25x23x13			six flake scars and three platforms	771916	6417762
9	white	quartz	core	34x25x15	30	peb	three flake scars and three platforms	771916	6417762
10	white	quartz	core	35x28x15	30	peb	four flake scars and two platforms	771916	6417762

Additional Comments:

- ☐ Broad crest;
- ☐ Also natural shattered quartz in other exposures;
- ☐ Grassy area with moderate ground disturbance due to stock, erosion and vegetation removal;
- ☐ Sandstone outcrops;
- ☐ Low research potential and unlikely to be sub-surface deposits.

Site Location: WCP442



Photograph: WCP442 (view north-west)



SITE NAME: WCP443

Site Type:	Isolated artefact	MGA Grid Reference:	772119:6417750
Date Recorded:	5/3/2013	Topographic Map:	Wollar 8833-2N
Recorder:	Birgitta Stephenson		
Landform Element:	Simple slope	Vegetation:	Cleared
Slope:	Gentle	Ground Disturbance:	High
Distance to Water:	>50		

Visible Extent of Surface Exposures: Length (m)	Visible Extent of Surface Exposures: Width (m)	Visible Extent of Evidence: Length (m)	Visible Extent of Evidence: Width (m)	Visible Locus Area (m ²)	Mean Surface Visibility of Locus (%)	Mean Arch. Visibility of Locus (%)	Effective Locus Area (m ²)	# of Artefacts	# of Artefacts per m ² of Effective Locus Area	Sub-Surface Deposit
50+	3	1	1	1	80	80	0.8	1	1.250	unlikely

Artefact Database:

Artefact #	Colour	Stone Material	Lithic Item Type	Dimensions (mm)	Cortex Amount (%)	Cortex Type	Comments	MGA Easting	MGA Northing
1	white	quartz	lithic fragment	30x20x5			centre of track	772119	6417751

Additional Comments:

- ☐ Located on vehicle track;
- ☐ Highly disturbed area;
- ☐ Low research potential.

Site Location: WCP443



Photograph: WCP443



SITE NAME: WCP444

Site Type: *Artefact scatter*
 Date Recorded: *24/1/2013*
 Recorder: *Peter Kuskie*

MGA Grid Reference: *773310:6417737*
 Topographic Map: *Wollar 8833-2N*

Landform Element: *Simple slope*
 Slope: *Gentle*
 Distance to Water: *>50*

Vegetation: *Cleared*
 Ground Disturbance: *Moderate*

Visible Extent of Surface Exposures: Length (m)	Visible Extent of Surface Exposures: Width (m)	Visible Extent of Evidence: Length (m)	Visible Extent of Evidence: Width (m)	Visible Locus Area (m ²)	Mean Surface Visibility of Locus (%)	Mean Arch. Visibility of Locus (%)	Effective Locus Area (m ²)	# of Artefacts	# of Artefacts per m ² of Effective Locus Area	Sub-Surface Deposit
varies	varies	14	2	28	50	50	14	2	0.143	possible

Artefact Database:

Artefact #	Colour	Stone Material	Lithic Item Type	Dimensions (mm)	Cortex Amount (%)	Cortex Type	Comments	MGA Easting	MGA Northing
1	white	quartz	flake	21x15x8			on track adjacent to fence	773310	6417737
2	white	quartz	flake	22x20x8				773324	6417732

Additional Comments:

- ☐ Broad almost very gentle simple slope;
- ☐ Artefacts on track north of fence east of dam;
- ☐ Grassy area with moderate ground disturbance due to track and vegetation removal;
- ☐ Materials available include quartz and tuff;
- ☐ Low research potential.

Site Location: WCP444



Photograph: WCP444 (view west)



SITE NAME: WCP445

Site Type:	Isolated artefact	MGA Grid Reference:	773212:6417765
Date Recorded:	24/1/2013	Topographic Map:	Wollar 8833-2N
Recorder:	Peter Kuskie		
Landform Element:	Simple slope	Vegetation:	Cleared
Slope:	Gentle	Ground Disturbance:	Moderate - high
Distance to Water:	>50		

Visible Extent of Surface Exposures: Length (m)	Visible Extent of Surface Exposures: Width (m)	Visible Extent of Evidence: Length (m)	Visible Extent of Evidence: Width (m)	Visible Locus Area (m ²)	Mean Surface Visibility of Locus (%)	Mean Arch. Visibility of Locus (%)	Effective Locus Area (m ²)	# of Artefacts	# of Artefacts per m ² of Effective Locus Area	Sub-Surface Deposit
15	10	1	1	1	90	90	0.9	1	1.111	possible

Artefact Database:

Artefact #	Colour	Stone Material	Lithic Item Type	Dimensions (mm)	Cortex Amount (%)	Cortex Type	Comments	MGA Easting	MGA Northing
1	purple	tuff	flake	33x28x11			eroded area west side of dam	773212	6417765

Additional Comments:

- ☐ Grassy area with moderate-high ground disturbance due to erosion adjacent to dam;
- ☐ Located 15 metres west of dam and 15 metres north of fence in erosion scour;
- ☐ Probably shallow deposit;
- ☐ Materials available include quartz and tuff;
- ☐ Low research potential.

Site Location: WCP445



Photograph: WCP445 (view east)



SITE NAME: WCP446

Site Type:	Isolated artefact	MGA Grid Reference:	773020:6418012
Date Recorded:	25/1/2013	Topographic Map:	Wollar 8833-2N
Recorder:	Peter Kuskie		
Landform Element:	Spur crest	Vegetation:	Cleared
Slope:	Level - very gentle	Ground Disturbance:	Low - moderate
Distance to Water:	>50		

Visible Extent of Surface Exposures: Length (m)	Visible Extent of Surface Exposures: Width (m)	Visible Extent of Evidence: Length (m)	Visible Extent of Evidence: Width (m)	Visible Locus Area (m ²)	Mean Surface Visibility of Locus (%)	Mean Arch. Visibility of Locus (%)	Effective Locus Area (m ²)	# of Artefacts	# of Artefacts per m ² of Effective Locus Area	Sub-Surface Deposit
varies	varies	1	1	1	30	30	0.3	1	3.333	possible

Artefact Database:

Artefact #	Colour	Stone Material	Lithic Item Type	Dimensions (mm)	Cortex Amount (%)	Cortex Type	Comments	MGA Easting	MGA Northing
1	cream	tuff	flake	25x18x6			high quality tuff, 9m east of isolated ironbark tree	773020	6418012

Additional Comments:

- ☐ Broad low open ridge;
- ☐ Very gently inclined;
- ☐ Marginally outside modification study area;
- ☐ Grassy area with low-moderate ground disturbance due to vegetation removal, erosion and pastoral use;
- ☐ Stone materials available include tuffaceous stone and minor amounts of quartz
- ☐ Low research potential, probably shallow deposits.

Site Location: WCP446



Photograph: WCP446 (view west)



SITE NAME: WCP447

Site Type:	Artefact scatter	MGA Grid Reference:	772945:6418415
Date Recorded:	25/1/2013	Topographic Map:	Wollar 8833-2N
Recorder:	Birgitta Stephenson		
Landform Element:	Simple slope	Vegetation:	Cleared
Slope:	Gentle	Ground Disturbance:	Low
Distance to Water:	>50		

Visible Extent of Surface Exposures: Length (m)	Visible Extent of Surface Exposures: Width (m)	Visible Extent of Evidence: Length (m)	Visible Extent of Evidence: Width (m)	Visible Locus Area (m ²)	Mean Surface Visibility of Locus (%)	Mean Arch. Visibility of Locus (%)	Effective Locus Area (m ²)	# of Artefacts	# of Artefacts per m ² of Effective Locus Area	Sub-Surface Deposit
varies	varies	1	1	1	50	50	0.5	2	4.000	probable

Artefact Database:

Artefact #	Colour	Stone Material	Lithic Item Type	Dimensions (mm)	Cortex Amount (%)	Cortex Type	Comments	MGA Easting	MGA Northing
1	white	quartz	flake	12x10x3				772945	6418415
2	white	quartz	flake	13x11x3				772945	6418415

Additional Comments:

- ☐ 45 metres east of road and 17 metres south of Eucalypt tree, near regrowth scrub.

Site Location: WCP447



Photograph: WCP447



SITE NAME: WCP448

Site Type:	Artefact scatter	MGA Grid Reference:	774470:6415964
Date Recorded:	24/1/2013	Topographic Map:	Wollar 8833-2N
Recorder:	Birgitta Stephenson		
Landform Element:	Simple slope	Vegetation:	Forested
Slope:	Gentle	Ground Disturbance:	High
Distance to Water:	>50		

Visible Extent of Surface Exposures: Length (m)	Visible Extent of Surface Exposures: Width (m)	Visible Extent of Evidence: Length (m)	Visible Extent of Evidence: Width (m)	Visible Locus Area (m ²)	Mean Surface Visibility of Locus (%)	Mean Arch. Visibility of Locus (%)	Effective Locus Area (m ²)	# of Artefacts	# of Artefacts per m ² of Effective Locus Area	Sub-Surface Deposit
150+	5	60	3	180	95	80	144	3	0.021	possible

Artefact Database:

Artefact #	Colour	Stone Material	Lithic Item Type	Dimensions (mm)	Cortex Amount (%)	Cortex Type	Comments	MGA Easting	MGA Northing
1	cream	tuff	core	75x48x28	20	terr	4 scars, 3 platforms; 3m west of north post of entrance gate; on northern margin of vehicle track	774470	6415964
2	white	quartz	flake	12x12x4			28m west of #1 along vehicle track	774447	6415981
3	white	quartz	core	33x26x18			2 scars, 1 platform; 25m west of #2 along vehicle track	774422	6415990

Additional Comments:

- ☐ High impacts - located on vehicle track opposite Upper Cumbo Road;
- ☐ Site probably continues further west along road but not inspected as outside modification study area;
- ☐ Box forest;
- ☐ Stone materials available include tuff and quartz;
- ☐ Low research potential, probably shallow deposits.

Site Location: WCP448



Photograph: WCP448 (view west)

