

ALL WORK TO COMPLY WITH THE
CURRENT BUILDING CODE OF AUSTRALIA

ROOF ULTRASTEEL
CUSTOM ORB
BMT 0.42
FIXED TO MANUFACTURERS
SPECIFICATION

ENERGY EFFICIENCY - BCA PART 3.12
ALL RMB MATERIAL TO HAVE
A MAXIMUM FLAMMABILITY INDEX OF 5
AND
A MAXIMUM SMOKE DEVELOPED INDEX OF 5

CLIMATE ZONE 6
ALL INSTALLATION TO
MANUFACTURER'S SPECIFICATION.
ROOFS: HEAT FLOW DIRECTION UPWARDS
MINIMUM TOTAL R VALUE REQUIRED = 3.2
METAL ROOF
FLAT CEILING WITH PITCHED ROOF WITH CAVITY ROOF SPACE
METAL
MATERIALS R VALUE 0.4 UPWARDS
MINIMUM R VALUE OF INSULATION TO BE ADDED = 2.8
PROVIDE
A) DOUBLE SIDED REFLECTIVE BUILDING MEMBRANE (RBM)
AND,
B) R3.0 BIO-SOLUBLE GLASSWOOL BATTS BETWEEN
FRAMING ABOVE CEILING LINING
OR
C) R3 BIO-SOLUBLE GLASSWOOL BLANKET OVER RBM
HARD UNDER METAL SHEETING.

75 x 50 BATTENS @ 900c/c

PRE-FABRICATED
ROOF TRUSSES @ 900c/c
TO MANUFACTURERS SPEC

PITCH SHOWN 20 DEGREES

VERANDAH PLATE
TO 3000 MAX. SPAN
200 X 75

BATTENED CEILING

PLASTERBOARD INTERNAL
LININGS INCLUDING WET AREAS
TO MANUFACTURERS SPECIFICATION.

BOXED HARDIFLEX LINED EAVES
450MM WIDE

COLORBOND METAL GUTTERS

COLORBOND FASCIA AND DOWNPIPES.
CONNECT TO TANK
HARDIFLEX
TO UNDER SIDE OF VERANDAH.

INSTALL SMOKE ALARM
SYSTEM IN ACCORDANCE
WITH B.C.A. 96

ENERGY EFFICIENCY - BCA PART 3.12
CLIMATE ZONE 6
WALLS EXTERNAL:
MINIMUM TOTAL R VALUE REQUIRED = 1.7

90 HYNE T2 RADIATA PINE
TIMBER FRAME INTERNAL WALLS

100 x 100
DURAGAL VERANDAH POSITS
AND PLATES
ON G.M.S. BRACKETS

HANDRAIL TO COMPLY WITH BCA
REQUIREMENTS
POWDERCOATED METAL GLASS

2 LEAF BRICKWORK
TO AS3700

ENERGY EFFICIENCY - BCA PART 3.12
CLIMATE ZONE 6
WALLS EXTERNAL:
MINIMUM TOTAL R VALUE REQUIRED = 1.7
CAVITY CLAY MASONRY (110MM EXTERNAL / MIN 90MM
INTERNAL)
MATERIALS R VALUE 0.67
SURFACE DENSITY OF NOT LESS THAN 220KG/M2
ON CONCRETE SLAB ON GROUND
OR,
INCORPORATE INSULATION OF R1.0
TO THE EDGES & UNDERNEATH THE SLAB.
MINIMUM R VALUE OF INSULATION TO BE ADDED = NIL.

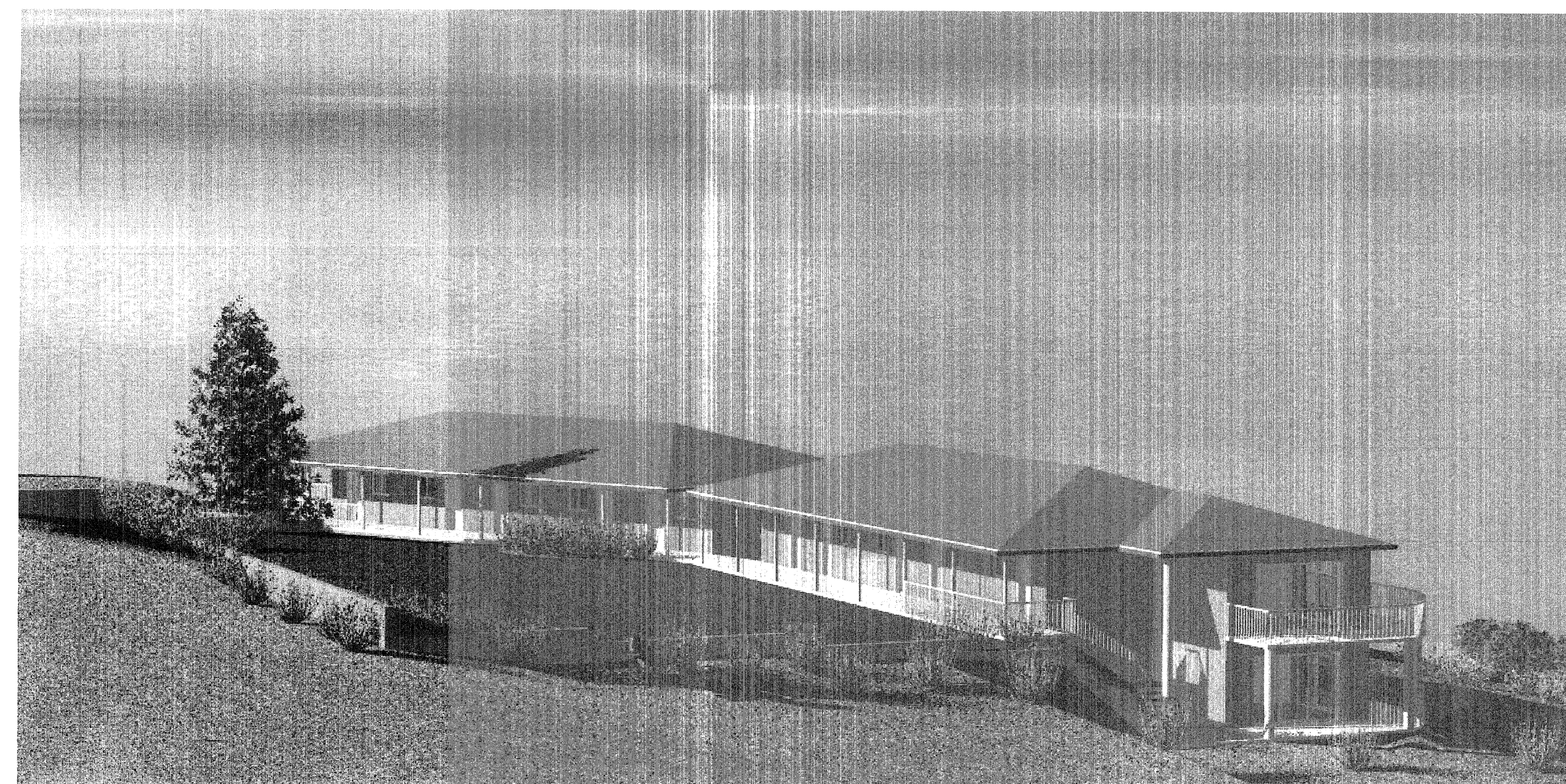
ENERGY EFFICIENCY - BCA PART 3.12
CLIMATE ZONE 6

TERMITE TREATMENT TO BE
USE OF HYNE T2 TREATED PINE
IN ALL FRAME WORK
USE OF CONCRETE FLOOR SLAB
DESIGNED AND CONSTRUCTED IN
ACCORDANCE WITH STRUCTURAL
ENGINEERS DETAIL AND CLEAR 150
EDGE EXPOSURE ALL AROUND
AND "TERMIMESH"
CARRIED OUT IN ACCORDANCE
WITH AS3680.1 AND
MANUFACTURERS SPECIFICATION.
CERTIFICATION REQUIRED ON
COMPLETION.

AGRICULTURAL DRAIN
TO PERIMETER.

REFER TO ENGINEER'S DETAILS FOR:
REINFORCED CONCRETE SLAB FLOOR
CONCRETE FOOTINGS
RETAINING WALL
CONCRETE COLUMNS
STEEL BEAMS
COLUMNS
LINTELS
FIXING, BRACING & HOLDING DOWN

SECTION A - A



VIEW FROM THE SOUTH WEST



VIEW FROM THE NORTH EAST

PLAN OF PROPOSED NEW MOTEL WING AT 'TATHRA HOTEL MOTEL' BEGA ST TATHRA

KL & CM GORDON
DRAFTING SERVICE
PO BOX 320 BEGA 2550
200A CARP ST, BEGA
PH: (02) 6492 1723
FAX: (02) 6492 3293
E-MAIL: gordon@acr.net.au

MEMBER OF
ba
BUILDING
DESIGNERS
ASSOCIATION
OF NEW SOUTH WALES INC.

SCALE 1:50
SCALE IN
METRES
0 1 2 3

D.A. COPY

A1

SECTION/PERSPECTIVES

01/04	DWG NO.	620
Drawn by:	SHEET	A1-04
T.J.K	12/04/2005 10:23:05 AM	



REVISIONS

-	-	-
-	-	-
-	-	-
-	-	-
A	D.A. COPY	12/4/05