

## Land within Verification Area

Lot	DP
4	232149
26	841160
1	375486
11	592404
6	1077004
7	1077004
354	867083
1	375485
A	380246
311	848411
310	848411
3	232149
228	752470
1	1089438
2	1089438
32	545601
2	534889
25	841160
1	135027
1	135026
9	6842
352	867083
1	303843
1	303842

# GLENCORE

18 March 2019

Alpha Distribution Ministerial Holding Corporation  
570 George Street  
Sydney, NSW 2000

To Whom It May Concern,

***Re: Glendell Continued Operations Project***

***Notice of applications for Site Verification Certificate and Gateway Certificate***

Glendell Tenements Pty Ltd (Glendell) is planning to submit an application for State Significant Development as defined under the *State Environmental Planning Policy (State and Regional Development) 2011* for the Glendell Continued Operations Project (the Project). This application will require development consent under the *Environmental Planning and Assessment Act 1979* (EP&A Act).

The Project proposes an extension of the current open cut mining operations to the north at the existing Glendell Mine to extract an additional approximately 135 million tonnes (Mt) of run-of-mine coal and extend the life of mining operations at Glendell to approximately 2044.

Pursuant to clause 17C(3)(a) of the *State Environmental Planning Policy (Mining, Petroleum Production and Extractive Industries) 2007*, notice is hereby given of an application for a site verification certificate being made to the Planning Secretary in relation to the land specified in Attachment 1 to this letter and shown on Attachment 2.

Pursuant to clause 17F(3)(a) of the *State Environmental Planning Policy (Mining, Petroleum Production and Extractive Industries) 2007*, notice is also given of an application for a Gateway Certificate being made to the Gateway Panel by Glendell in relation to the land specified in Attachment 1 to this letter and shown on Attachment 2.

Both applications focus on areas within the Project Area that will be impacted by the Project where additional mining leases may be required (known as the Verification Area). The Verification Area is located south of Hebden and has a total area of approximately 700 hectares (refer to Attachment 2). The Verification Area for the Project is currently subject to the following mining tenements CCL708, EL6594, EL8184 and ML1629 (mining purposes only) and ELA 5736 has also been lodged in relation to the area covered by ML1629.

Once lodged, the applications will be available on the NSW Planning Portal: <https://www.planningportal.nsw.gov.au/major-projects/projects/search-name?name=Glendell>

If you would like additional information regarding these applications, please do not hesitate to contact Bradly Snedden on (02) 6520 2684, or via email [bradly.snedden@glencore.com.au](mailto:bradly.snedden@glencore.com.au).

# GLENCORE

Yours sincerely,

A handwritten signature in black ink, appearing to read 'BS', with a horizontal line extending to the right.

Bradly Snedden

Approvals Manager – Glendell Continued Operations Project

Glencore

# GLENCORE

## Attachment 1 – Schedule of Lands

Lot	DP	Landowner
4	232149	Crown
26	841160	Alpha Distribution Ministerial Holding Corporation
1	375486	Enex Foydell Pty Limited
11	592404	Enex Foydell Pty Limited
6	1077004	Enex Foydell Pty Limited
7	1077004	Enex Foydell Pty Limited
354	867083	ENEX LIDDELL PTY LIMITED 67.5% MITSUI MATSUSHIMA AUSTRALIA PTY LIMITED 32.5%
1	375485	Glendell Tenements Pty Ltd
A	380246	Glendell Tenements Pty Ltd
311	848411	Glendell Tenements Pty Ltd
310	848411	Glendell Tenements Pty Ltd
3	232149	Glendell Tenements Pty Ltd
228	752470	LIDDELL SOUTHERN TENEMENTS PTY LIMITED
1	1089438	LIDDELL SOUTHERN TENEMENTS PTY LIMITED
2	1089438	LIDDELL SOUTHERN TENEMENTS PTY LIMITED
32	545601	LIDDELL SOUTHERN TENEMENTS PTY LIMITED
2	534889	LIDDELL SOUTHERN TENEMENTS PTY LIMITED
25	841160	Mt Owen Pty Limited
1	135027	Ravensworth Operations Pty Limited
1	135026	Ravensworth Operations Pty Limited
9	6842	Ravensworth Operations Pty Limited
352	867083	Ravensworth Operations Pty Limited
1	303843	Ravensworth Operations Pty Limited
1	303842	Ravensworth Operations Pty Limited
		Hebden Road - vested in Singleton Council as Roads Authority

Private Mail Bag 8, Singleton, NSW 2330

567 Broke Road, Singleton, NSW 2330

T + 61 2 6570 2416 F + 61 2 6570 2520 [www.glencore.com](http://www.glencore.com)

Glencore Coal Assets Australia Pty Limited ACN 163 821 298



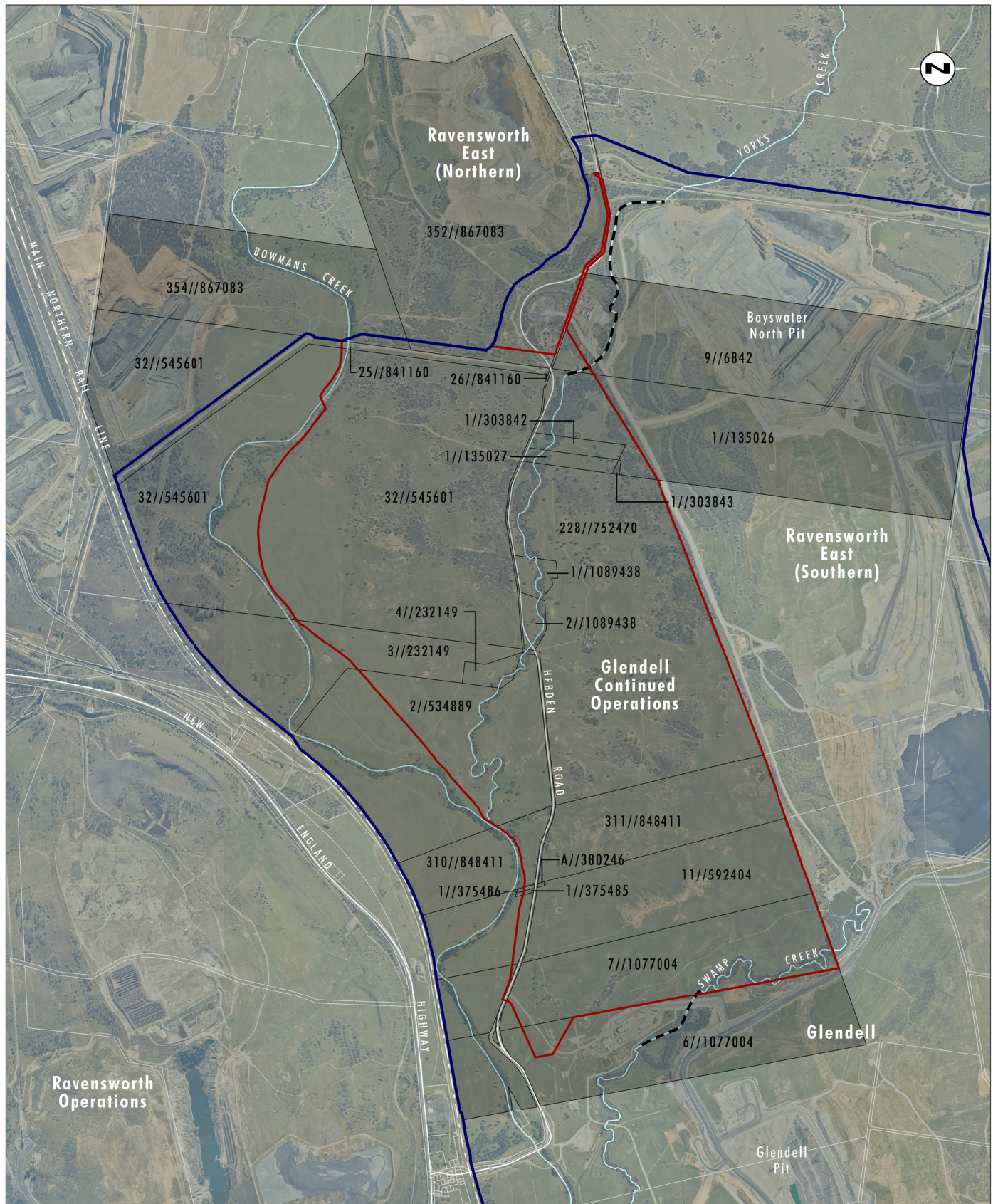


Image Source: Glencore (Dec 2018)  
Data Source: Glencore (2019)

0 0.5 1.0 1.5 km  
1:30 000

### Legend

- ▬ Project Area
- ▬ Verification Area
- Existing Creek Diversion

Verification Area with Lot/DP



# GLENCORE

15 March 2019

Crown land  
PO Box 2155  
Dangar, NSW 2309

To Whom It May Concern,

***Re: Glendell Continued Operations Project***

***Notice of applications for Site Verification Certificate and Gateway Certificate***

Glendell Tenements Pty Ltd (Glendell) is planning to submit an application for State Significant Development as defined under the *State Environmental Planning Policy (State and Regional Development) 2011* for the Glendell Continued Operations Project (the Project). This application will require development consent under the *Environmental Planning and Assessment Act 1979* (EP&A Act).

The Project proposes an extension of the current open cut mining operations to the north at the existing Glendell Mine to extract an additional approximately 135 million tonnes (Mt) of run-of-mine coal and extend the life of mining operations at Glendell to approximately 2044.

Pursuant to clause 17C(3)(a) of the *State Environmental Planning Policy (Mining, Petroleum Production and Extractive Industries) 2007*, notice is hereby given of an application for a site verification certificate being made to the Planning Secretary in relation to the land specified in Attachment 1 to this letter and shown on Attachment 2.

Pursuant to clause 17F(3)(a) of the *State Environmental Planning Policy (Mining, Petroleum Production and Extractive Industries) 2007*, notice is also given of an application for a Gateway Certificate being made to the Gateway Panel by Glendell in relation to the land specified in Attachment 1 to this letter and shown on Attachment 2.

Both applications focus on areas within the Project Area that will be impacted by the Project where additional mining leases may be required (known as the Verification Area). The Verification Area is located south of Hebden and has a total area of approximately 700 hectares (refer to Attachment 2). The Verification Area for the Project is currently subject to the following mining tenements CCL708, EL6594, EL8184 and ML1629 (mining purposes only) and ELA 5736 has also been lodged in relation to the area covered by ML1629.

Once lodged, the applications will be available on the NSW Planning Portal: <https://www.planningportal.nsw.gov.au/major-projects/projects/search-name?name=Glendell>

If you would like additional information regarding these applications, please do not hesitate to contact Bradly Snedden on (02) 6520 2684, or via email [bradly.snedden@glencore.com.au](mailto:bradly.snedden@glencore.com.au).

Private Mail Bag 8, Singleton, NSW 2330  
567 Broke Road, Singleton, NSW 2330  
T + 61 2 6570 2416 F + 61 2 6570 2520 [www.glencore.com](http://www.glencore.com)

Glencore Coal Assets Australia Pty Limited ACN 163 821 298

# GLENCORE

Yours sincerely,

A handwritten signature in black ink, appearing to be 'BS' followed by a stylized flourish.

Bradly Snedden

Approvals Manager – Glendell Continued Operations Project

Glencore

# GLENCORE

## Attachment 1 – Schedule of Lands

Lot	DP	Landowner
4	232149	Crown
26	841160	Alpha Distribution Ministerial Holding Corporation
1	375486	Enex Foydell Pty Limited
11	592404	Enex Foydell Pty Limited
6	1077004	Enex Foydell Pty Limited
7	1077004	Enex Foydell Pty Limited
354	867083	ENEX LIDDELL PTY LIMITED 67.5% MITSUI MATSUSHIMA AUSTRALIA PTY LIMITED 32.5%
1	375485	Glendell Tenements Pty Ltd
A	380246	Glendell Tenements Pty Ltd
311	848411	Glendell Tenements Pty Ltd
310	848411	Glendell Tenements Pty Ltd
3	232149	Glendell Tenements Pty Ltd
228	752470	LIDDELL SOUTHERN TENEMENTS PTY LIMITED
1	1089438	LIDDELL SOUTHERN TENEMENTS PTY LIMITED
2	1089438	LIDDELL SOUTHERN TENEMENTS PTY LIMITED
32	545601	LIDDELL SOUTHERN TENEMENTS PTY LIMITED
2	534889	LIDDELL SOUTHERN TENEMENTS PTY LIMITED
25	841160	Mt Owen Pty Limited
1	135027	Ravensworth Operations Pty Limited
1	135026	Ravensworth Operations Pty Limited
9	6842	Ravensworth Operations Pty Limited
352	867083	Ravensworth Operations Pty Limited
1	303843	Ravensworth Operations Pty Limited
1	303842	Ravensworth Operations Pty Limited
		Hebden Road - vested in Singleton Council as Roads Authority

Private Mail Bag 8, Singleton, NSW 2330

567 Broke Road, Singleton, NSW 2330

T + 61 2 6570 2416 F + 61 2 6570 2520 [www.glencore.com](http://www.glencore.com)

Glencore Coal Assets Australia Pty Limited ACN 163 821 298



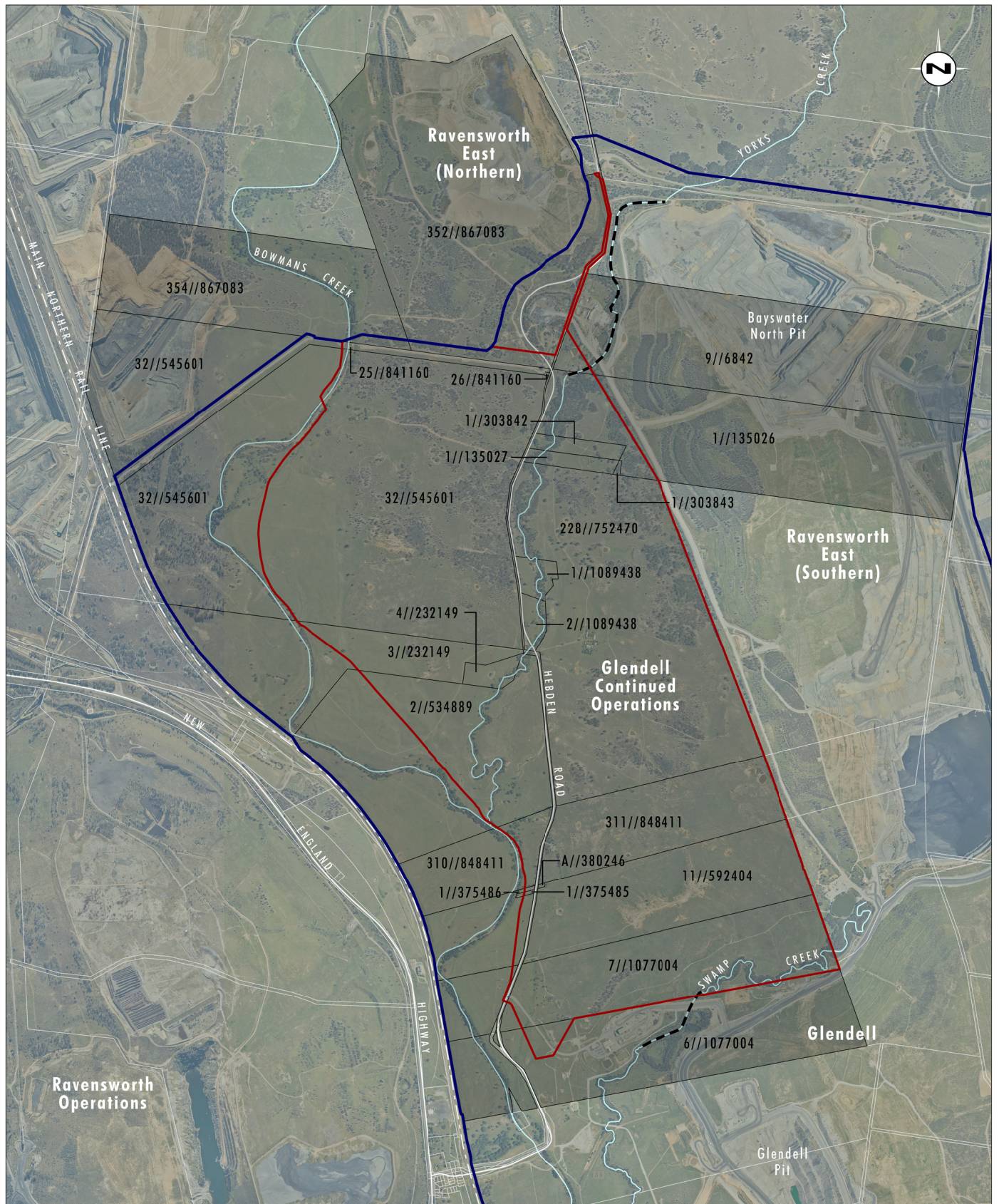


Image Source: Glencore (Dec 2018)  
Data Source: Glencore (2019)

0 0.5 1.0 1.5 km  
1:30 000

### Legend

- Project Area
- Verification Area
- Existing Creek Diversion

Verification Area with Lot/DP



# GLENCORE

15 March 2019

Singleton Council  
PO Box 314  
Singleton, NSW 2330

To Whom It May Concern,

***Re: Glendell Continued Operations Project***

***Notice of applications for Site Verification Certificate and Gateway Certificate***

Glendell Tenements Pty Ltd (Glendell) is planning to submit an application for State Significant Development as defined under the *State Environmental Planning Policy (State and Regional Development) 2011* for the Glendell Continued Operations Project (the Project). This application will require development consent under the *Environmental Planning and Assessment Act 1979* (EP&A Act).

The Project proposes an extension of the current open cut mining operations to the north at the existing Glendell Mine to extract an additional approximately 135 million tonnes (Mt) of run-of-mine coal and extend the life of mining operations at Glendell to approximately 2044.

Pursuant to clause 17C(3)(a) of the *State Environmental Planning Policy (Mining, Petroleum Production and Extractive Industries) 2007*, notice is hereby given of an application for a site verification certificate being made to the Planning Secretary in relation to the land specified in Attachment 1 to this letter and shown on Attachment 2.

Pursuant to clause 17F(3)(a) of the *State Environmental Planning Policy (Mining, Petroleum Production and Extractive Industries) 2007*, notice is also given of an application for a Gateway Certificate being made to the Gateway Panel by Glendell in relation to the land specified in Attachment 1 to this letter and shown on Attachment 2.

Both applications focus on areas within the Project Area that will be impacted by the Project where additional mining leases may be required (known as the Verification Area). The Verification Area is located south of Hebden and has a total area of approximately 700 hectares (refer to Attachment 2). The Verification Area for the Project is currently subject to the following mining tenements CCL708, EL6594, EL8184 and ML1629 (mining purposes only) and ELA 5736 has also been lodged in relation to the area covered by ML1629.

Once lodged, the applications will be available on the NSW Planning Portal: <https://www.planningportal.nsw.gov.au/major-projects/projects/search-name?name=Glendell>

If you would like additional information regarding these applications, please do not hesitate to contact Bradly Snedden on (02) 6520 2684, or via email [bradly.snedden@glencore.com.au](mailto:bradly.snedden@glencore.com.au).

# GLENCORE

Yours sincerely,

A handwritten signature in black ink, appearing to be 'BS' followed by a stylized flourish.

Bradly Snedden

Approvals Manager – Glendell Continued Operations Project

Glencore

# GLENCORE

## Attachment 1 – Schedule of Lands

Lot	DP	Landowner
4	232149	Crown
26	841160	Alpha Distribution Ministerial Holding Corporation
1	375486	Enex Foydell Pty Limited
11	592404	Enex Foydell Pty Limited
6	1077004	Enex Foydell Pty Limited
7	1077004	Enex Foydell Pty Limited
354	867083	ENEX LIDDELL PTY LIMITED 67.5% MITSUI MATSUSHIMA AUSTRALIA PTY LIMITED 32.5%
1	375485	Glendell Tenements Pty Ltd
A	380246	Glendell Tenements Pty Ltd
311	848411	Glendell Tenements Pty Ltd
310	848411	Glendell Tenements Pty Ltd
3	232149	Glendell Tenements Pty Ltd
228	752470	LIDDELL SOUTHERN TENEMENTS PTY LIMITED
1	1089438	LIDDELL SOUTHERN TENEMENTS PTY LIMITED
2	1089438	LIDDELL SOUTHERN TENEMENTS PTY LIMITED
32	545601	LIDDELL SOUTHERN TENEMENTS PTY LIMITED
2	534889	LIDDELL SOUTHERN TENEMENTS PTY LIMITED
25	841160	Mt Owen Pty Limited
1	135027	Ravensworth Operations Pty Limited
1	135026	Ravensworth Operations Pty Limited
9	6842	Ravensworth Operations Pty Limited
352	867083	Ravensworth Operations Pty Limited
1	303843	Ravensworth Operations Pty Limited
1	303842	Ravensworth Operations Pty Limited
		Hebden Road - vested in Singleton Council as Roads Authority

Private Mail Bag 8, Singleton, NSW 2330

567 Broke Road, Singleton, NSW 2330

T + 61 2 6570 2416 F + 61 2 6570 2520 [www.glencore.com](http://www.glencore.com)

Glencore Coal Assets Australia Pty Limited ACN 163 821 298



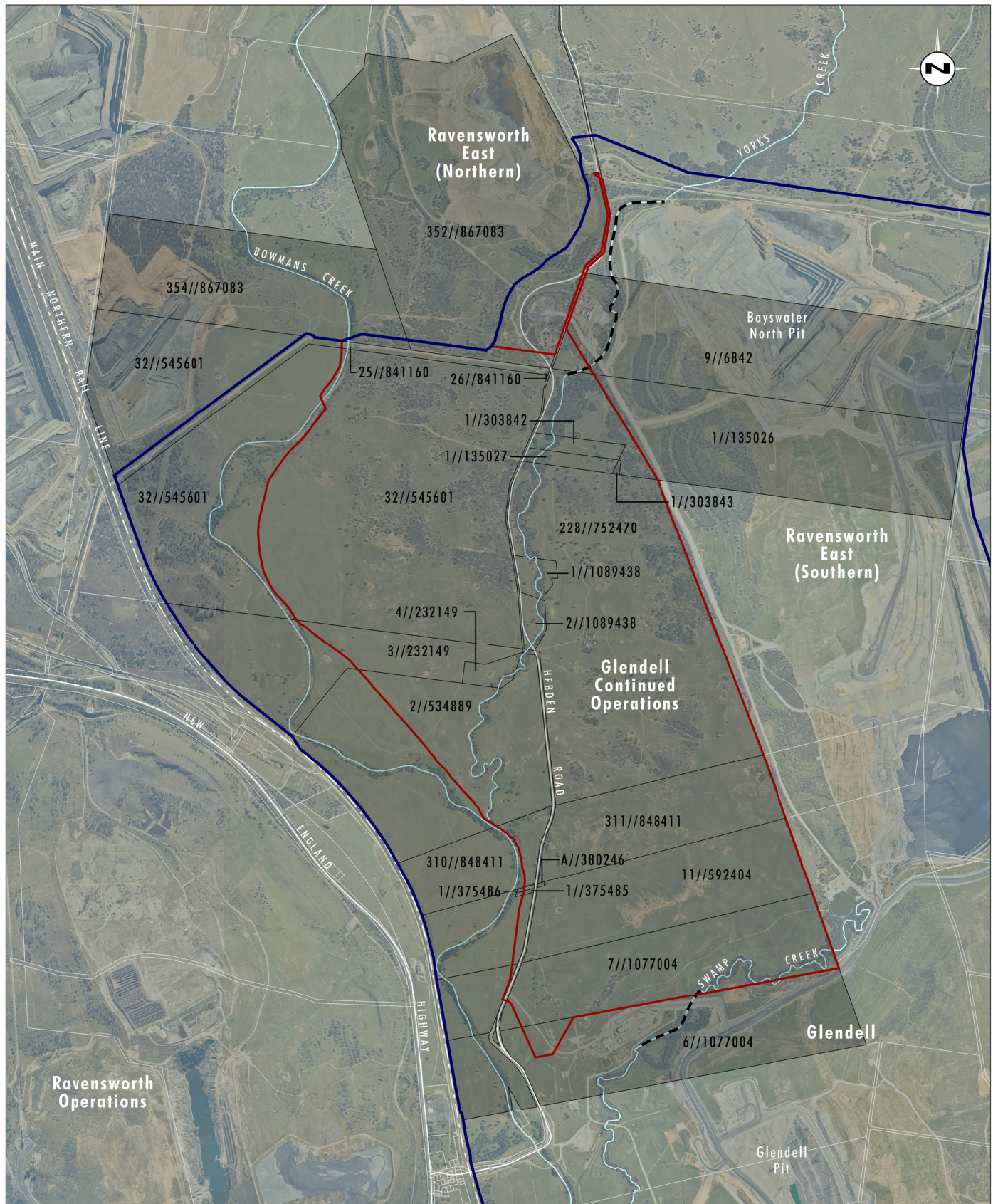


Image Source: Glencore (Dec 2018)  
Data Source: Glencore (2019)

0 0.5 1.0 1.5 km  
1:30 000

### Legend

- Project Area
- Verification Area
- Existing Creek Diversion

Verification Area with Lot/DP



# GLENCORE

19 March 2019

Enex Foydell Pty Limited  
PO Box R1543  
Royal Exchange NSW 1225

Attention: Directors

To Ian Cribb and Patrick Wilkes,

***Re: Glendell Continued Operations Project***

***Notice of applications for Site Verification Certificate and Gateway Certificate***

Glendell Tenements Pty Ltd (Glendell) is planning to submit an application for State Significant Development as defined under the *State Environmental Planning Policy (State and Regional Development) 2011* for the Glendell Continued Operations Project (the Project). This application will require development consent under the *Environmental Planning and Assessment Act 1979* (EP&A Act).

The Project proposes an extension of the current open cut mining operations to the north at the existing Glendell Mine to extract an additional approximately 135 million tonnes (Mt) of run-of-mine coal and extend the life of mining operations at Glendell to approximately 2044.

Pursuant to clause 17C(3)(a) of the *State Environmental Planning Policy (Mining, Petroleum Production and Extractive Industries) 2007*, notice is hereby given of an application for a site verification certificate being made to the Planning Secretary in relation to the land specified in Attachment 1 to this letter and shown on Attachment 2.

Pursuant to clause 17F(3)(a) of the *State Environmental Planning Policy (Mining, Petroleum Production and Extractive Industries) 2007*, notice is also given of an application for a Gateway Certificate being made to the Gateway Panel by Glendell in relation to the land specified in Attachment 1 to this letter and shown on Attachment 2.

Both applications focus on areas within the Project Area that will be impacted by the Project where additional mining leases may be required (known as the Verification Area). The Verification Area is located south of Hebden and has a total area of approximately 700 hectares (refer to Attachment 2). The Verification Area for the Project is currently subject to the following mining tenements CCL708, EL6594, EL8184 and ML1629 (mining purposes only) and ELA 5736 has also been lodged in relation to the area covered by ML1629.

Once lodged, the applications will be available on the NSW Planning Portal: <https://www.planningportal.nsw.gov.au/major-projects/projects/search-name?name=Glendell>

If you would like additional information regarding these applications, please do not hesitate to contact Bradly Snedden on (02) 6520 2684, or via email [bradly.snedden@glencore.com.au](mailto:bradly.snedden@glencore.com.au).

Private Mail Bag 8, Singleton, NSW 2330  
567 Broke Road, Singleton, NSW 2330  
T + 61 2 6570 2416 F + 61 2 6570 2520 [www.glencore.com](http://www.glencore.com)

Glencore Coal Assets Australia Pty Limited ACN 163 821 298

# GLENCORE

Yours sincerely,

A handwritten signature in black ink, appearing to be 'BS' followed by a stylized flourish.

Bradly Snedden

Approvals Manager – Glendell Continued Operations Project

Glencore

# GLENCORE

## Attachment 1 – Schedule of Lands

Lot	DP	Landowner
4	232149	Crown
26	841160	Alpha Distribution Ministerial Holding Corporation
1	375486	Enex Foydell Pty Limited
11	592404	Enex Foydell Pty Limited
6	1077004	Enex Foydell Pty Limited
7	1077004	Enex Foydell Pty Limited
354	867083	ENEX LIDDELL PTY LIMITED 67.5% MITSUI MATSUSHIMA AUSTRALIA PTY LIMITED 32.5%
1	375485	Glendell Tenements Pty Ltd
A	380246	Glendell Tenements Pty Ltd
311	848411	Glendell Tenements Pty Ltd
310	848411	Glendell Tenements Pty Ltd
3	232149	Glendell Tenements Pty Ltd
228	752470	LIDDELL SOUTHERN TENEMENTS PTY LIMITED
1	1089438	LIDDELL SOUTHERN TENEMENTS PTY LIMITED
2	1089438	LIDDELL SOUTHERN TENEMENTS PTY LIMITED
32	545601	LIDDELL SOUTHERN TENEMENTS PTY LIMITED
2	534889	LIDDELL SOUTHERN TENEMENTS PTY LIMITED
25	841160	Mt Owen Pty Limited
1	135027	Ravensworth Operations Pty Limited
1	135026	Ravensworth Operations Pty Limited
9	6842	Ravensworth Operations Pty Limited
352	867083	Ravensworth Operations Pty Limited
1	303843	Ravensworth Operations Pty Limited
1	303842	Ravensworth Operations Pty Limited
		Hebden Road - vested in Singleton Council as Roads Authority

Private Mail Bag 8, Singleton, NSW 2330

567 Broke Road, Singleton, NSW 2330

T + 61 2 6570 2416 F + 61 2 6570 2520 [www.glencore.com](http://www.glencore.com)

Glencore Coal Assets Australia Pty Limited ACN 163 821 298



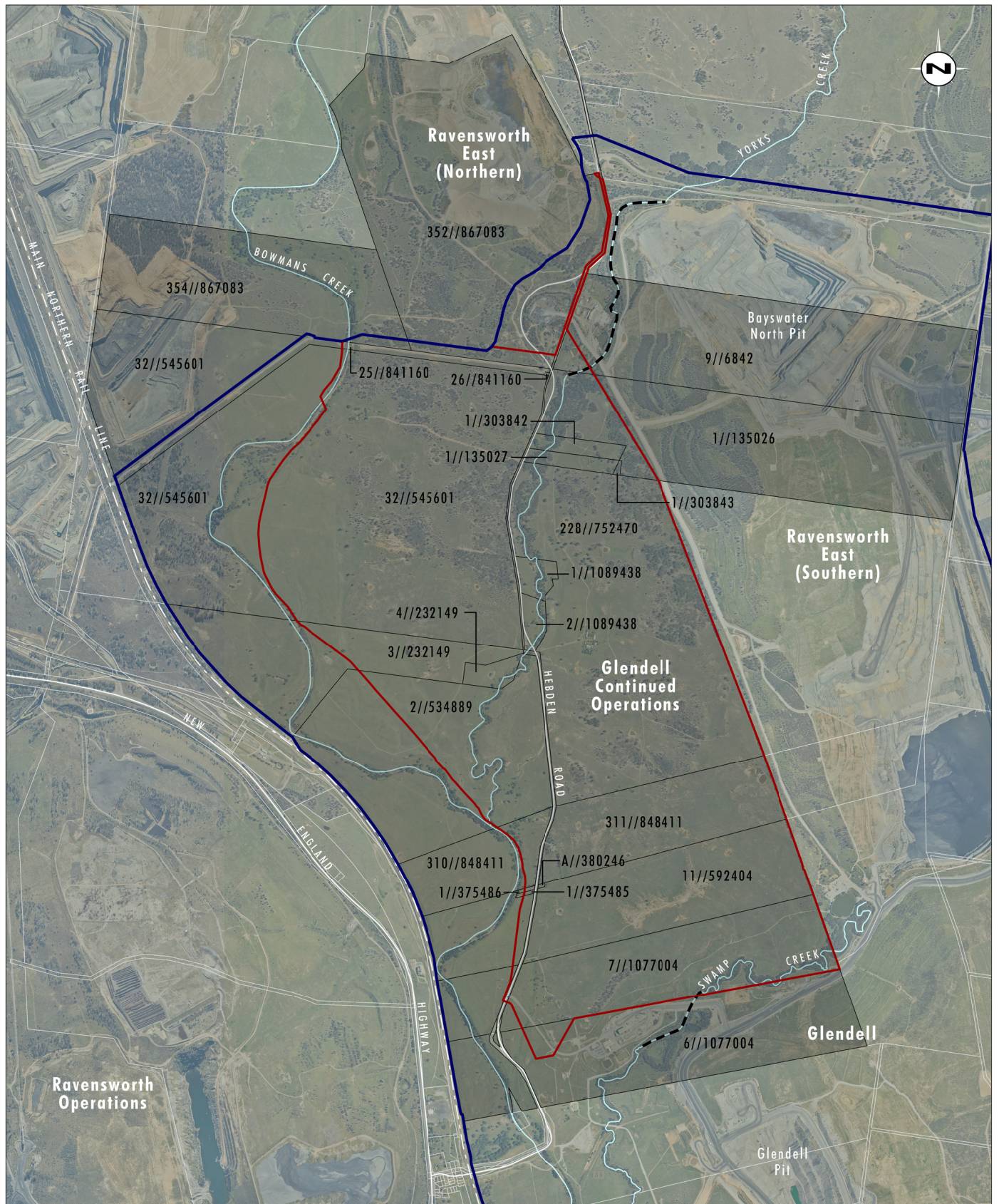


Image Source: Glencore (Dec 2018)  
Data Source: Glencore (2019)

0 0.5 1.0 1.5 km  
1:30 000

### Legend

- Project Area
- Verification Area
- Existing Creek Diversion

Verification Area with Lot/DP



# GLENCORE

19 March 2019

Enex Liddell Pty Limited 67.5% Mitsui Matsushima Australia Pty Limited 32.5%  
PO Box R1543  
Royal Exchange NSW 1225

Attention: Directors

To Ian Cribb and Patrick Wilkes,

***Re: Glendell Continued Operations Project***

***Notice of applications for Site Verification Certificate and Gateway Certificate***

Glendell Tenements Pty Ltd (Glendell) is planning to submit an application for State Significant Development as defined under the *State Environmental Planning Policy (State and Regional Development) 2011* for the Glendell Continued Operations Project (the Project). This application will require development consent under the *Environmental Planning and Assessment Act 1979* (EP&A Act).

The Project proposes an extension of the current open cut mining operations to the north at the existing Glendell Mine to extract an additional approximately 135 million tonnes (Mt) of run-of-mine coal and extend the life of mining operations at Glendell to approximately 2044.

Pursuant to clause 17C(3)(a) of the *State Environmental Planning Policy (Mining, Petroleum Production and Extractive Industries) 2007*, notice is hereby given of an application for a site verification certificate being made to the Planning Secretary in relation to the land specified in Attachment 1 to this letter and shown on Attachment 2.

Pursuant to clause 17F(3)(a) of the *State Environmental Planning Policy (Mining, Petroleum Production and Extractive Industries) 2007*, notice is also given of an application for a Gateway Certificate being made to the Gateway Panel by Glendell in relation to the land specified in Attachment 1 to this letter and shown on Attachment 2.

Both applications focus on areas within the Project Area that will be impacted by the Project where additional mining leases may be required (known as the Verification Area). The Verification Area is located south of Hebden and has a total area of approximately 700 hectares (refer to Attachment 2). The Verification Area for the Project is currently subject to the following mining tenements CCL708, EL6594, EL8184 and ML1629 (mining purposes only) and ELA 5736 has also been lodged in relation to the area covered by ML1629.

Once lodged, the applications will be available on the NSW Planning Portal: <https://www.planningportal.nsw.gov.au/major-projects/projects/search-name?name=Glendell>

If you would like additional information regarding these applications, please do not hesitate to contact Bradly Snedden on (02) 6520 2684, or via email [bradly.snedden@glencore.com.au](mailto:bradly.snedden@glencore.com.au).



# GLENCORE

Yours sincerely,

A handwritten signature in black ink, appearing to read 'BS', with a horizontal line extending to the right.

Bradly Snedden

Approvals Manager – Glendell Continued Operations Project

Glencore

# GLENCORE

## Attachment 1 – Schedule of Lands

Lot	DP	Landowner
4	232149	Crown
26	841160	Alpha Distribution Ministerial Holding Corporation
1	375486	Enex Foydell Pty Limited
11	592404	Enex Foydell Pty Limited
6	1077004	Enex Foydell Pty Limited
7	1077004	Enex Foydell Pty Limited
354	867083	ENEX LIDDELL PTY LIMITED 67.5% MITSUI MATSUSHIMA AUSTRALIA PTY LIMITED 32.5%
1	375485	Glendell Tenements Pty Ltd
A	380246	Glendell Tenements Pty Ltd
311	848411	Glendell Tenements Pty Ltd
310	848411	Glendell Tenements Pty Ltd
3	232149	Glendell Tenements Pty Ltd
228	752470	LIDDELL SOUTHERN TENEMENTS PTY LIMITED
1	1089438	LIDDELL SOUTHERN TENEMENTS PTY LIMITED
2	1089438	LIDDELL SOUTHERN TENEMENTS PTY LIMITED
32	545601	LIDDELL SOUTHERN TENEMENTS PTY LIMITED
2	534889	LIDDELL SOUTHERN TENEMENTS PTY LIMITED
25	841160	Mt Owen Pty Limited
1	135027	Ravensworth Operations Pty Limited
1	135026	Ravensworth Operations Pty Limited
9	6842	Ravensworth Operations Pty Limited
352	867083	Ravensworth Operations Pty Limited
1	303843	Ravensworth Operations Pty Limited
1	303842	Ravensworth Operations Pty Limited
		Hebden Road - vested in Singleton Council as Roads Authority

Private Mail Bag 8, Singleton, NSW 2330

567 Broke Road, Singleton, NSW 2330

T + 61 2 6570 2416 F + 61 2 6570 2520 [www.glencore.com](http://www.glencore.com)

Glencore Coal Assets Australia Pty Limited ACN 163 821 298



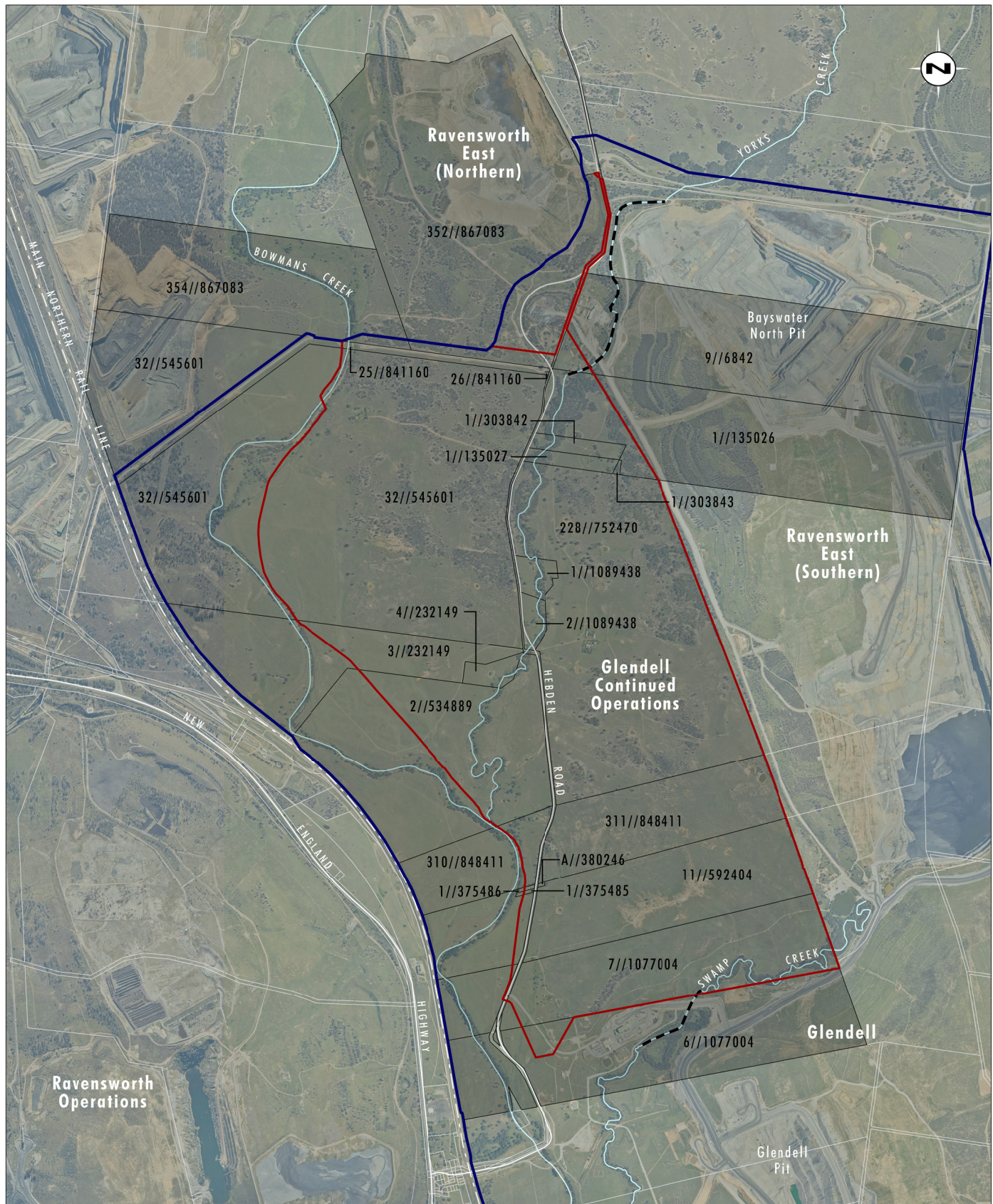


Image Source: Glencore (Dec 2018)  
Data Source: Glencore (2019)

0 0.5 1.0 1.5 km  
1:30 000

### Legend

- Project Area
- Verification Area
- Existing Creek Diversion

Verification Area with Lot/DP



# GLENCORE

19 March 2019

Liddell Southern Tenements Pty Limited  
PO Box R1543  
Royal Exchange NSW 1225

Attention: Directors

To Ian Cribb, Michelle Lawson, Patrick Wilkes

***Re: Glendell Continued Operations Project***

***Notice of applications for Site Verification Certificate and Gateway Certificate***

Glendell Tenements Pty Ltd (Glendell) is planning to submit an application for State Significant Development as defined under the *State Environmental Planning Policy (State and Regional Development) 2011* for the Glendell Continued Operations Project (the Project). This application will require development consent under the *Environmental Planning and Assessment Act 1979* (EP&A Act).

The Project proposes an extension of the current open cut mining operations to the north at the existing Glendell Mine to extract an additional approximately 135 million tonnes (Mt) of run-of-mine coal and extend the life of mining operations at Glendell to approximately 2044.

Pursuant to clause 17C(3)(a) of the *State Environmental Planning Policy (Mining, Petroleum Production and Extractive Industries) 2007*, notice is hereby given of an application for a site verification certificate being made to the Planning Secretary in relation to the land specified in Attachment 1 to this letter and shown on Attachment 2.

Pursuant to clause 17F(3)(a) of the *State Environmental Planning Policy (Mining, Petroleum Production and Extractive Industries) 2007*, notice is also given of an application for a Gateway Certificate being made to the Gateway Panel by Glendell in relation to the land specified in Attachment 1 to this letter and shown on Attachment 2.

Both applications focus on areas within the Project Area that will be impacted by the Project where additional mining leases may be required (known as the Verification Area). The Verification Area is located south of Hebden and has a total area of approximately 700 hectares (refer to Attachment 2). The Verification Area for the Project is currently subject to the following mining tenements CCL708, EL6594, EL8184 and ML1629 (mining purposes only) and ELA 5736 has also been lodged in relation to the area covered by ML1629.

Once lodged, the applications will be available on the NSW Planning Portal: <https://www.planningportal.nsw.gov.au/major-projects/projects/search-name?name=Glendell>

If you would like additional information regarding these applications, please do not hesitate to contact Bradly Snedden on (02) 6520 2684, or via email [bradly.snedden@glencore.com.au](mailto:bradly.snedden@glencore.com.au).

# GLENCORE

Yours sincerely,

A handwritten signature in black ink, appearing to be 'BS' followed by a stylized flourish.

Bradly Snedden

Approvals Manager – Glendell Continued Operations Project

Glencore



# GLENCORE

## Attachment 1 – Schedule of Lands

Lot	DP	Landowner
4	232149	Crown
26	841160	Alpha Distribution Ministerial Holding Corporation
1	375486	Enex Foydell Pty Limited
11	592404	Enex Foydell Pty Limited
6	1077004	Enex Foydell Pty Limited
7	1077004	Enex Foydell Pty Limited
354	867083	ENEX LIDDELL PTY LIMITED 67.5% MITSUI MATSUSHIMA AUSTRALIA PTY LIMITED 32.5%
1	375485	Glendell Tenements Pty Ltd
A	380246	Glendell Tenements Pty Ltd
311	848411	Glendell Tenements Pty Ltd
310	848411	Glendell Tenements Pty Ltd
3	232149	Glendell Tenements Pty Ltd
228	752470	LIDDELL SOUTHERN TENEMENTS PTY LIMITED
1	1089438	LIDDELL SOUTHERN TENEMENTS PTY LIMITED
2	1089438	LIDDELL SOUTHERN TENEMENTS PTY LIMITED
32	545601	LIDDELL SOUTHERN TENEMENTS PTY LIMITED
2	534889	LIDDELL SOUTHERN TENEMENTS PTY LIMITED
25	841160	Mt Owen Pty Limited
1	135027	Ravensworth Operations Pty Limited
1	135026	Ravensworth Operations Pty Limited
9	6842	Ravensworth Operations Pty Limited
352	867083	Ravensworth Operations Pty Limited
1	303843	Ravensworth Operations Pty Limited
1	303842	Ravensworth Operations Pty Limited
		Hebden Road - vested in Singleton Council as Roads Authority

Private Mail Bag 8, Singleton, NSW 2330

567 Broke Road, Singleton, NSW 2330

T + 61 2 6570 2416 F + 61 2 6570 2520 [www.glencore.com](http://www.glencore.com)

Glencore Coal Assets Australia Pty Limited ACN 163 821 298



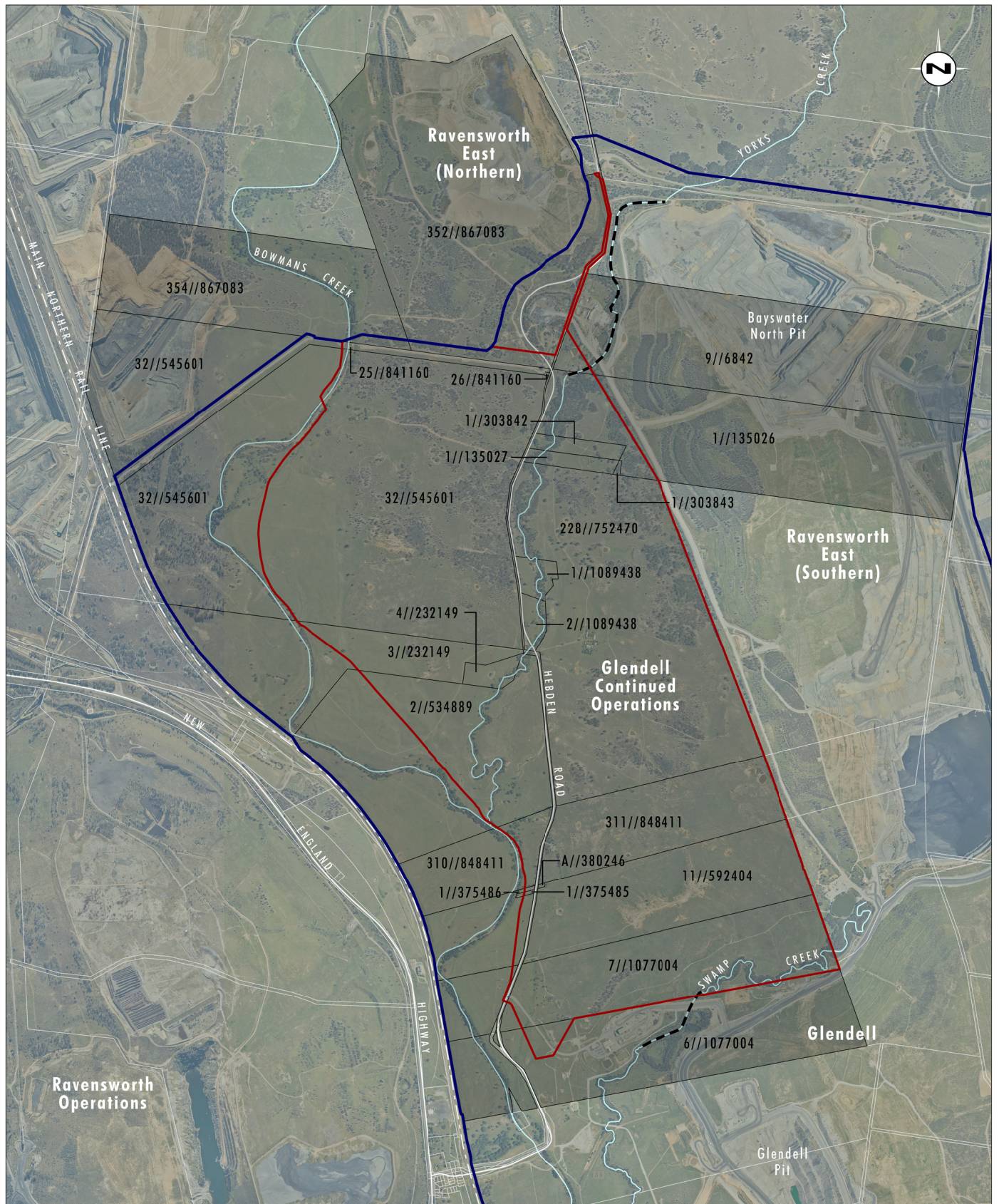


Image Source: Glencore (Dec 2018)  
Data Source: Glencore (2019)

0 0.5 1.0 1.5 km  
1:30 000

### Legend

- Project Area
- Verification Area
- Existing Creek Diversion

Verification Area with Lot/DP



# GLENCORE

19 March 2019

Mt Owen Pty Limited  
PO Box R1543  
Royal Exchange NSW 1225

Attention: Directors

To Stephen Hubert and Michael Pajkovic,

***Re: Glendell Continued Operations Project***

***Notice of applications for Site Verification Certificate and Gateway Certificate***

Glendell Tenements Pty Ltd (Glendell) is planning to submit an application for State Significant Development as defined under the *State Environmental Planning Policy (State and Regional Development) 2011* for the Glendell Continued Operations Project (the Project). This application will require development consent under the *Environmental Planning and Assessment Act 1979* (EP&A Act).

The Project proposes an extension of the current open cut mining operations to the north at the existing Glendell Mine to extract an additional approximately 135 million tonnes (Mt) of run-of-mine coal and extend the life of mining operations at Glendell to approximately 2044.

Pursuant to clause 17C(3)(a) of the *State Environmental Planning Policy (Mining, Petroleum Production and Extractive Industries) 2007*, notice is hereby given of an application for a site verification certificate being made to the Planning Secretary in relation to the land specified in Attachment 1 to this letter and shown on Attachment 2.

Pursuant to clause 17F(3)(a) of the *State Environmental Planning Policy (Mining, Petroleum Production and Extractive Industries) 2007*, notice is also given of an application for a Gateway Certificate being made to the Gateway Panel by Glendell in relation to the land specified in Attachment 1 to this letter and shown on Attachment 2.

Both applications focus on areas within the Project Area that will be impacted by the Project where additional mining leases may be required (known as the Verification Area). The Verification Area is located south of Hebden and has a total area of approximately 700 hectares (refer to Attachment 2). The Verification Area for the Project is currently subject to the following mining tenements CCL708, EL6594, EL8184 and ML1629 (mining purposes only) and ELA 5736 has also been lodged in relation to the area covered by ML1629.

Once lodged, the applications will be available on the NSW Planning Portal: <https://www.planningportal.nsw.gov.au/major-projects/projects/search-name?name=Glendell>

If you would like additional information regarding these applications, please do not hesitate to contact Bradly Snedden on (02) 6520 2684, or via email [bradly.snedden@glencore.com.au](mailto:bradly.snedden@glencore.com.au).

Private Mail Bag 8, Singleton, NSW 2330  
567 Broke Road, Singleton, NSW 2330  
T + 61 2 6570 2416 F + 61 2 6570 2520 [www.glencore.com](http://www.glencore.com)

Glencore Coal Assets Australia Pty Limited ACN 163 821 298

# GLENCORE

Yours sincerely,

A handwritten signature in black ink, appearing to read 'BS', with a horizontal line extending to the right.

Bradly Snedden

Approvals Manager – Glendell Continued Operations Project

Glencore

# GLENCORE

## Attachment 1 – Schedule of Lands

Lot	DP	Landowner
4	232149	Crown
26	841160	Alpha Distribution Ministerial Holding Corporation
1	375486	Enex Foydell Pty Limited
11	592404	Enex Foydell Pty Limited
6	1077004	Enex Foydell Pty Limited
7	1077004	Enex Foydell Pty Limited
354	867083	ENEX LIDDELL PTY LIMITED 67.5% MITSUI MATSUSHIMA AUSTRALIA PTY LIMITED 32.5%
1	375485	Glendell Tenements Pty Ltd
A	380246	Glendell Tenements Pty Ltd
311	848411	Glendell Tenements Pty Ltd
310	848411	Glendell Tenements Pty Ltd
3	232149	Glendell Tenements Pty Ltd
228	752470	LIDDELL SOUTHERN TENEMENTS PTY LIMITED
1	1089438	LIDDELL SOUTHERN TENEMENTS PTY LIMITED
2	1089438	LIDDELL SOUTHERN TENEMENTS PTY LIMITED
32	545601	LIDDELL SOUTHERN TENEMENTS PTY LIMITED
2	534889	LIDDELL SOUTHERN TENEMENTS PTY LIMITED
25	841160	Mt Owen Pty Limited
1	135027	Ravensworth Operations Pty Limited
1	135026	Ravensworth Operations Pty Limited
9	6842	Ravensworth Operations Pty Limited
352	867083	Ravensworth Operations Pty Limited
1	303843	Ravensworth Operations Pty Limited
1	303842	Ravensworth Operations Pty Limited
		Hebden Road - vested in Singleton Council as Roads Authority

Private Mail Bag 8, Singleton, NSW 2330

567 Broke Road, Singleton, NSW 2330

T + 61 2 6570 2416 F + 61 2 6570 2520 [www.glencore.com](http://www.glencore.com)

Glencore Coal Assets Australia Pty Limited ACN 163 821 298



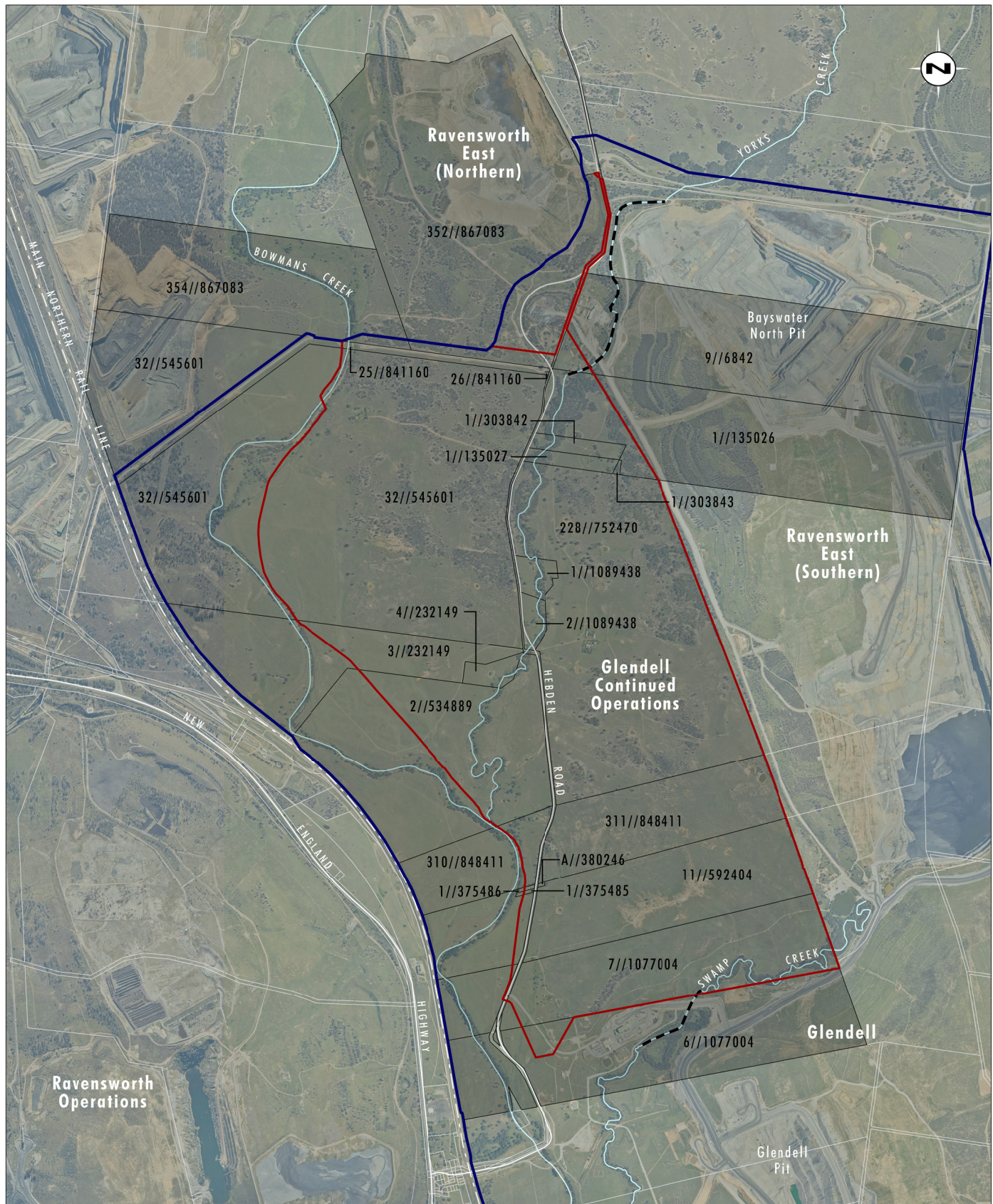


Image Source: Glencore (Dec 2018)  
Data Source: Glencore (2019)

0 0.5 1.0 1.5 km  
1:30 000

### Legend

- ▬ Project Area
- ▬ Verification Area
- Existing Creek Diversion

Verification Area with Lot/DP



# GLENCORE

19 March 2019

Ravensworth Operations Pty Limited  
PO Box R1543  
Royal Exchange NSW 1225

Attention: Directors

To Stephen Hubert and Michael Pajkovic,

***Re: Glendell Continued Operations Project***

***Notice of applications for Site Verification Certificate and Gateway Certificate***

Glendell Tenements Pty Ltd (Glendell) is planning to submit an application for State Significant Development as defined under the *State Environmental Planning Policy (State and Regional Development) 2011* for the Glendell Continued Operations Project (the Project). This application will require development consent under the *Environmental Planning and Assessment Act 1979* (EP&A Act).

The Project proposes an extension of the current open cut mining operations to the north at the existing Glendell Mine to extract an additional approximately 135 million tonnes (Mt) of run-of-mine coal and extend the life of mining operations at Glendell to approximately 2044.

Pursuant to clause 17C(3)(a) of the *State Environmental Planning Policy (Mining, Petroleum Production and Extractive Industries) 2007*, notice is hereby given of an application for a site verification certificate being made to the Planning Secretary in relation to the land specified in Attachment 1 to this letter and shown on Attachment 2.

Pursuant to clause 17F(3)(a) of the *State Environmental Planning Policy (Mining, Petroleum Production and Extractive Industries) 2007*, notice is also given of an application for a Gateway Certificate being made to the Gateway Panel by Glendell in relation to the land specified in Attachment 1 to this letter and shown on Attachment 2.

Both applications focus on areas within the Project Area that will be impacted by the Project where additional mining leases may be required (known as the Verification Area). The Verification Area is located south of Hebden and has a total area of approximately 700 hectares (refer to Attachment 2). The Verification Area for the Project is currently subject to the following mining tenements CCL708, EL6594, EL8184 and ML1629 (mining purposes only) and ELA 5736 has also been lodged in relation to the area covered by ML1629.

Once lodged, the applications will be available on the NSW Planning Portal: <https://www.planningportal.nsw.gov.au/major-projects/projects/search-name?name=Glendell>

If you would like additional information regarding these applications, please do not hesitate to contact Bradly Snedden on (02) 6520 2684, or via email [bradly.snedden@glencore.com.au](mailto:bradly.snedden@glencore.com.au).

Private Mail Bag 8, Singleton, NSW 2330  
567 Broke Road, Singleton, NSW 2330  
T + 61 2 6570 2416 F + 61 2 6570 2520 [www.glencore.com](http://www.glencore.com)

Glencore Coal Assets Australia Pty Limited ACN 163 821 298

# GLENCORE

Yours sincerely,

A handwritten signature in black ink, appearing to read 'BS', with a horizontal line extending to the right.

Bradly Snedden

Approvals Manager – Glendell Continued Operations Project

Glencore

# GLENCORE

## Attachment 1 – Schedule of Lands

Lot	DP	Landowner
4	232149	Crown
26	841160	Alpha Distribution Ministerial Holding Corporation
1	375486	Enex Foydell Pty Limited
11	592404	Enex Foydell Pty Limited
6	1077004	Enex Foydell Pty Limited
7	1077004	Enex Foydell Pty Limited
354	867083	ENEX LIDDELL PTY LIMITED 67.5% MITSUI MATSUSHIMA AUSTRALIA PTY LIMITED 32.5%
1	375485	Glendell Tenements Pty Ltd
A	380246	Glendell Tenements Pty Ltd
311	848411	Glendell Tenements Pty Ltd
310	848411	Glendell Tenements Pty Ltd
3	232149	Glendell Tenements Pty Ltd
228	752470	LIDDELL SOUTHERN TENEMENTS PTY LIMITED
1	1089438	LIDDELL SOUTHERN TENEMENTS PTY LIMITED
2	1089438	LIDDELL SOUTHERN TENEMENTS PTY LIMITED
32	545601	LIDDELL SOUTHERN TENEMENTS PTY LIMITED
2	534889	LIDDELL SOUTHERN TENEMENTS PTY LIMITED
25	841160	Mt Owen Pty Limited
1	135027	Ravensworth Operations Pty Limited
1	135026	Ravensworth Operations Pty Limited
9	6842	Ravensworth Operations Pty Limited
352	867083	Ravensworth Operations Pty Limited
1	303843	Ravensworth Operations Pty Limited
1	303842	Ravensworth Operations Pty Limited
		Hebden Road - vested in Singleton Council as Roads Authority

Private Mail Bag 8, Singleton, NSW 2330

567 Broke Road, Singleton, NSW 2330

T + 61 2 6570 2416 F + 61 2 6570 2520 [www.glencore.com](http://www.glencore.com)

Glencore Coal Assets Australia Pty Limited ACN 163 821 298



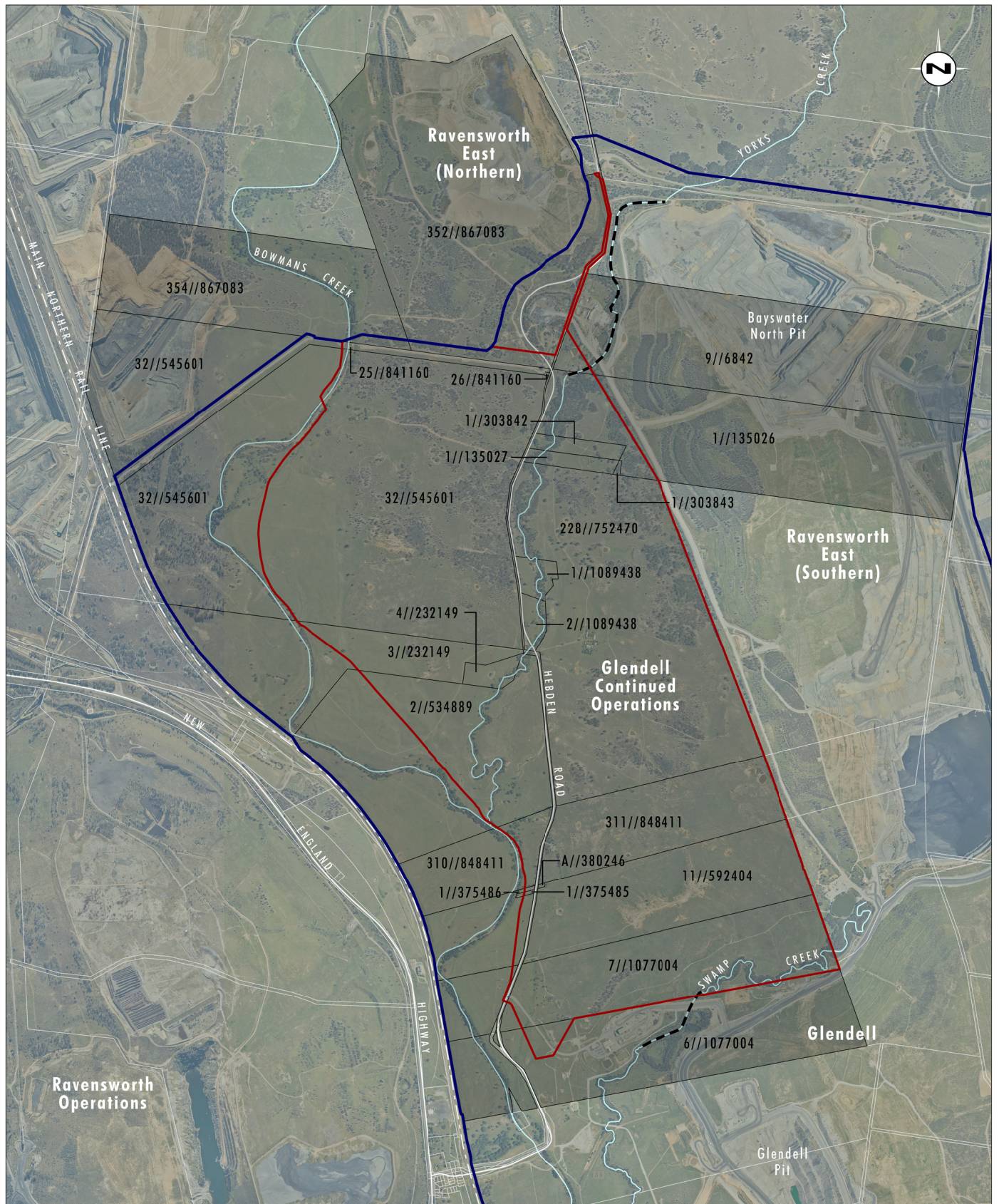


Image Source: Glencore (Dec 2018)  
Data Source: Glencore (2019)

0 0.5 1.0 1.5 km  
1:30 000

### Legend

- Project Area
- Verification Area
- Existing Creek Diversion

Verification Area with Lot/DP