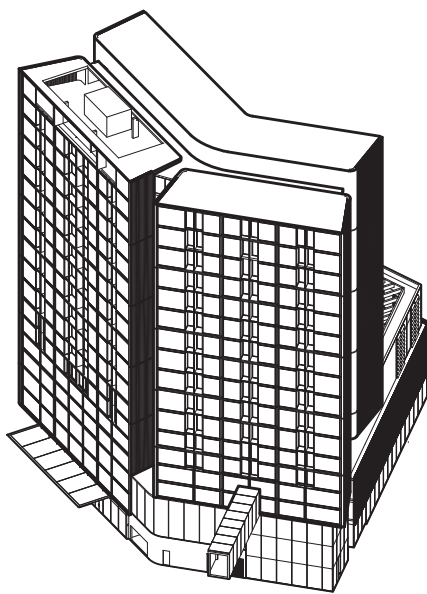
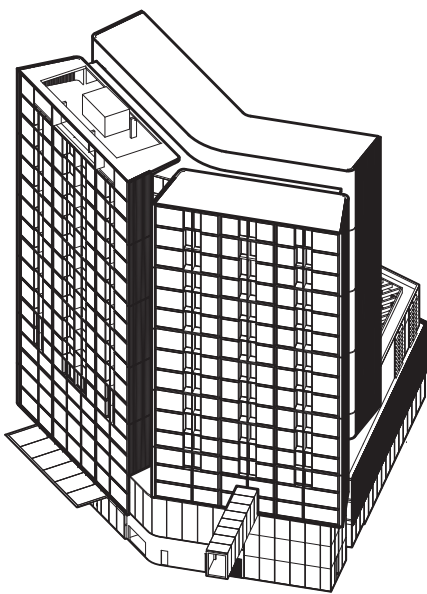
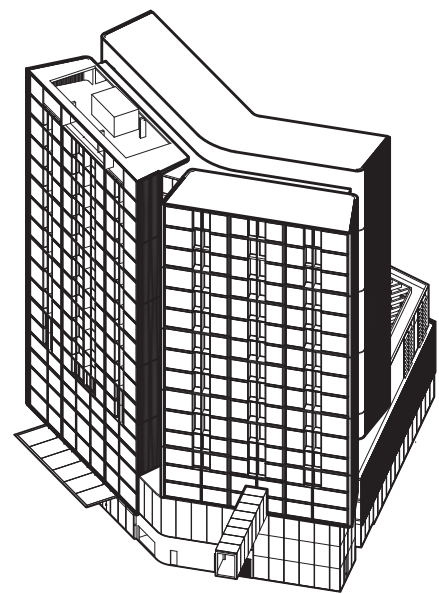




A Point of Difference



‘In the Park’

Boutique accommodation ‘in the park’ , where the external becomes the internal experience

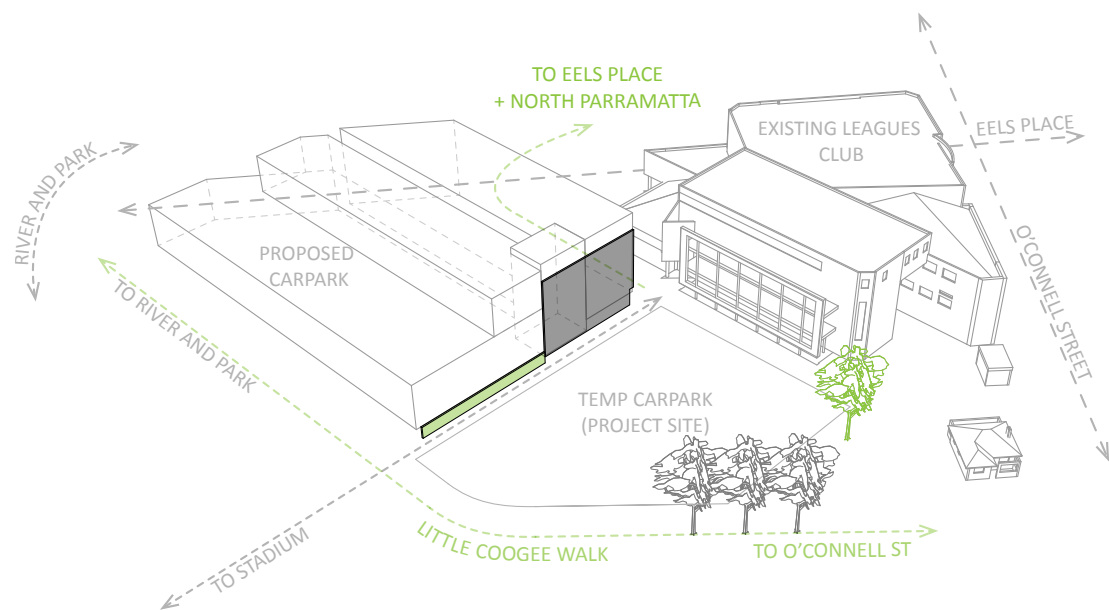
Wellness & Green Living

Leverages the existing fitness corridors within Parramatta Park and along Parramatta River

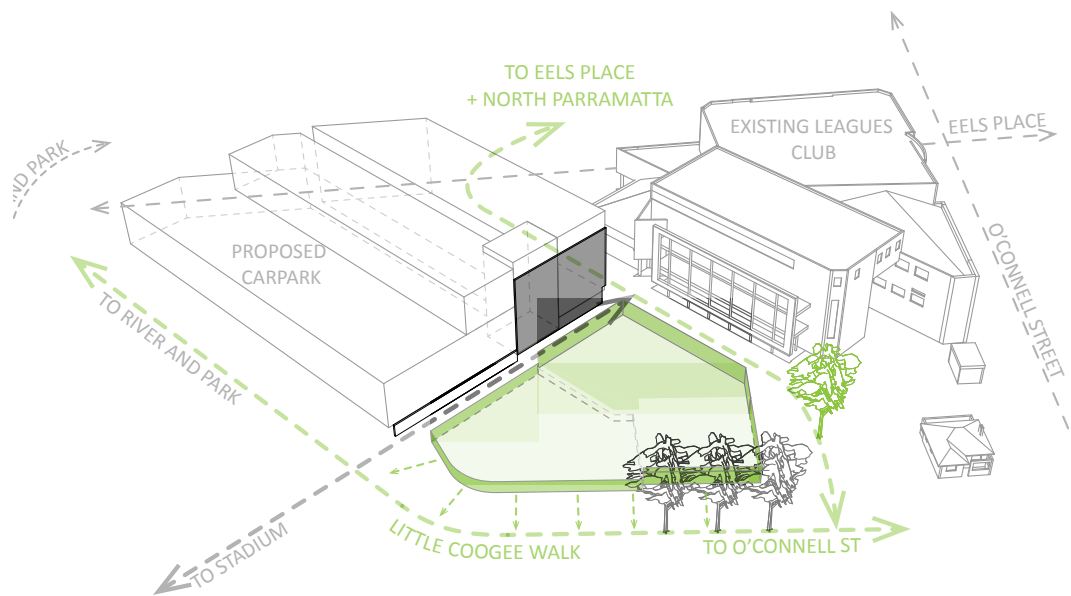
Fresh Air & Green View Corridors

Provide individual opportunities for direct connection with external conditions

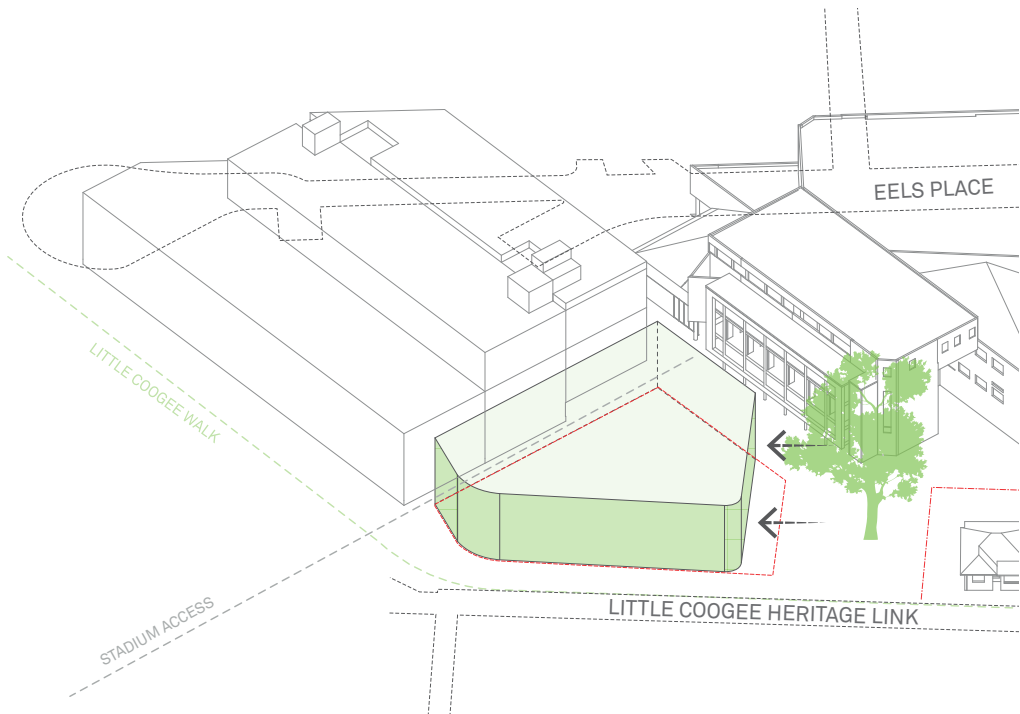
3.2 Site Masterplan



Respond to existing context massing

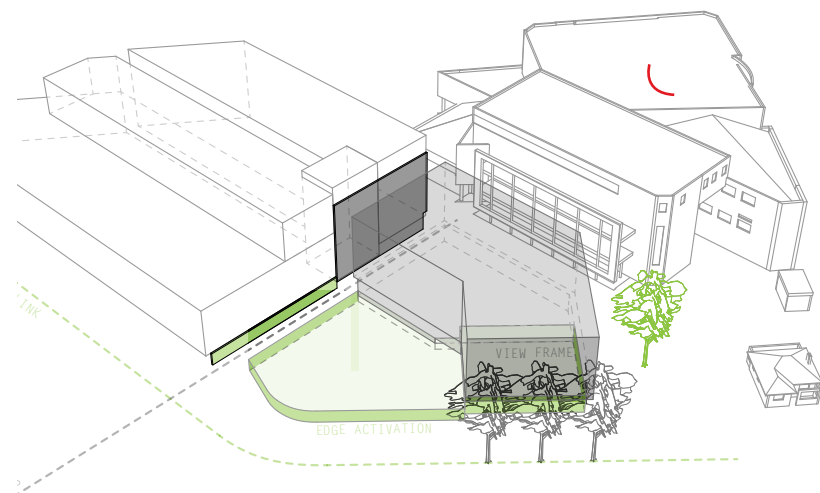


Public ground plane defined by pedestrian links through the site

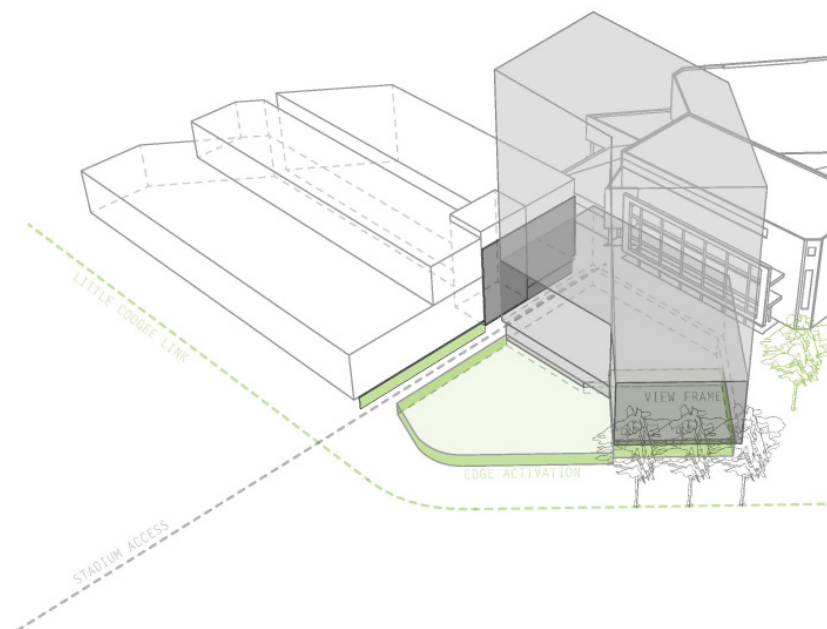


Define podium extent to allow for key existing tree

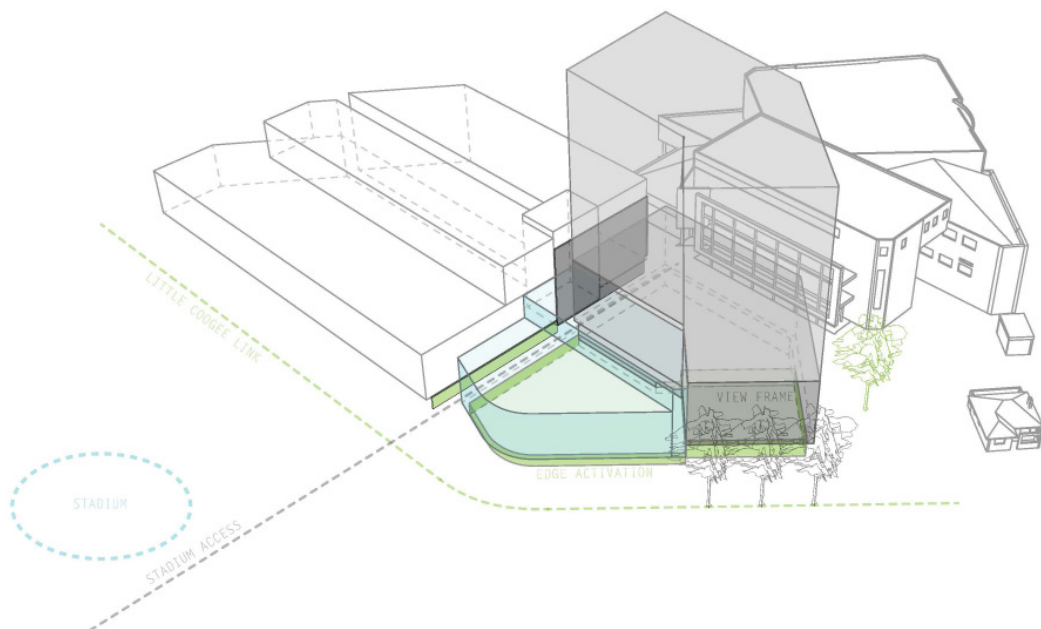
3.3 Massing Principles



Mass extends carpark volume for hotel base

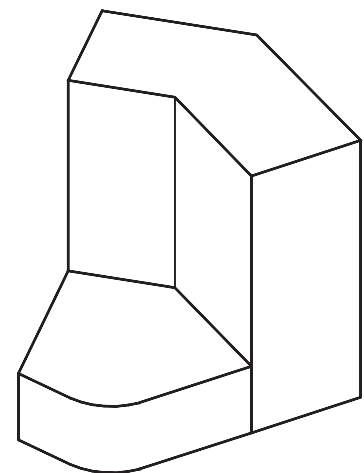


Mass extruded vertically for hotel tower

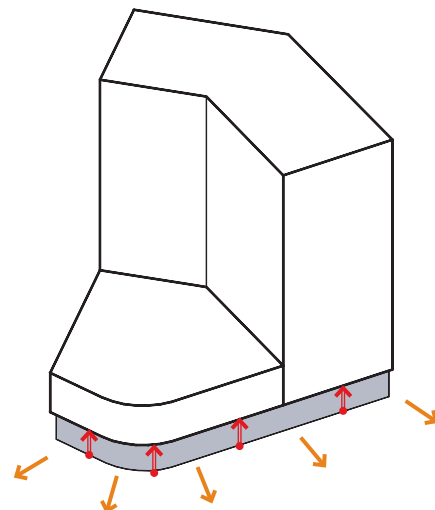


Lower program volume to south matching height of carpark

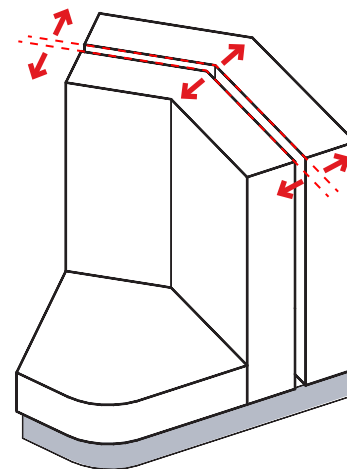
3.3 Massing Principles



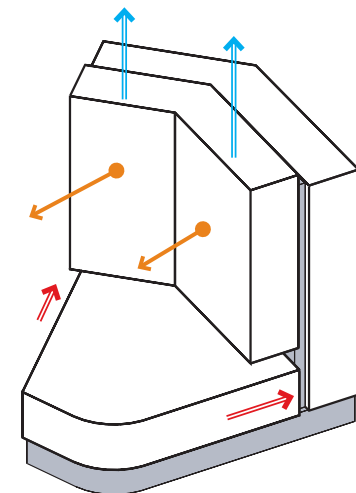
1
OVERALL ENVELOPE



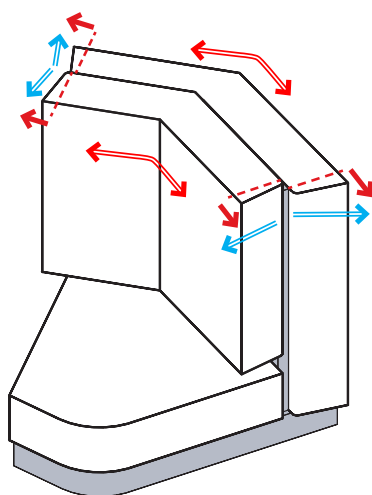
2
MASS LIFTED UP TO CREATE
GROUND PLANE ACTIVATION
AND POINTS OF ADDRESS



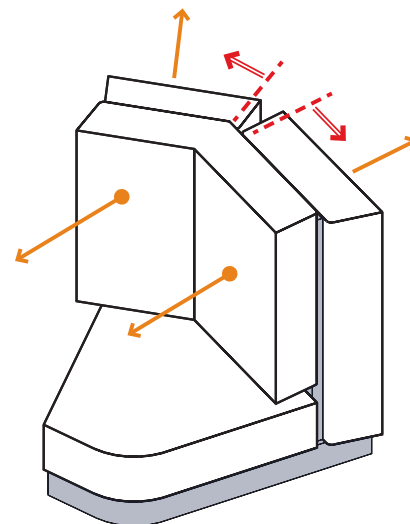
3
TOWER MASS SPLIT ALONG
THE PROGRAM



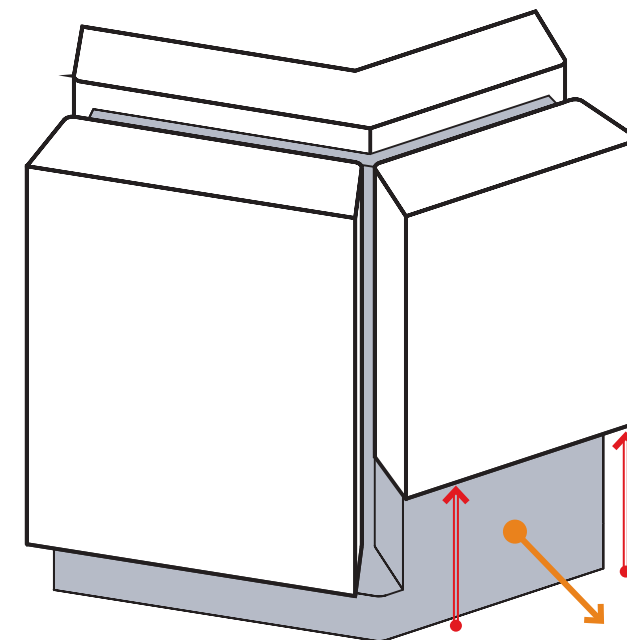
4
WESTERN TOWER MASS
LIFTED UP TO INCREASE VIEWS
OF THE PARK AND FUNCTION
ROOM OPENED ONTO
THE TERRACE



5
TOWER ENDS SPLAYED TO
INCREASE VIEWS TO THE PARK



6
EASTERN TOWER MASS
SPLIT ALONG PROGRAM
CREATING 3 ELEVATED ROOM VOLUMES
ORIENTATED TOWARDS THE 3 KEY VIEWS:
1. SOUTH-WEST(PARK)
2. EAST (CITY)
3. NORTH (HERITAGE)

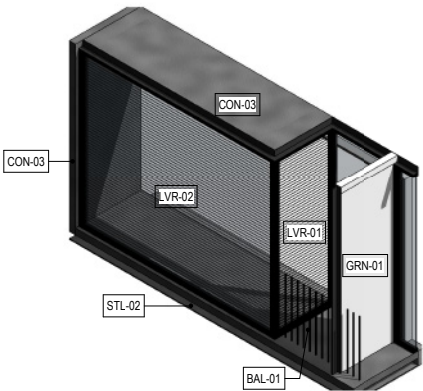
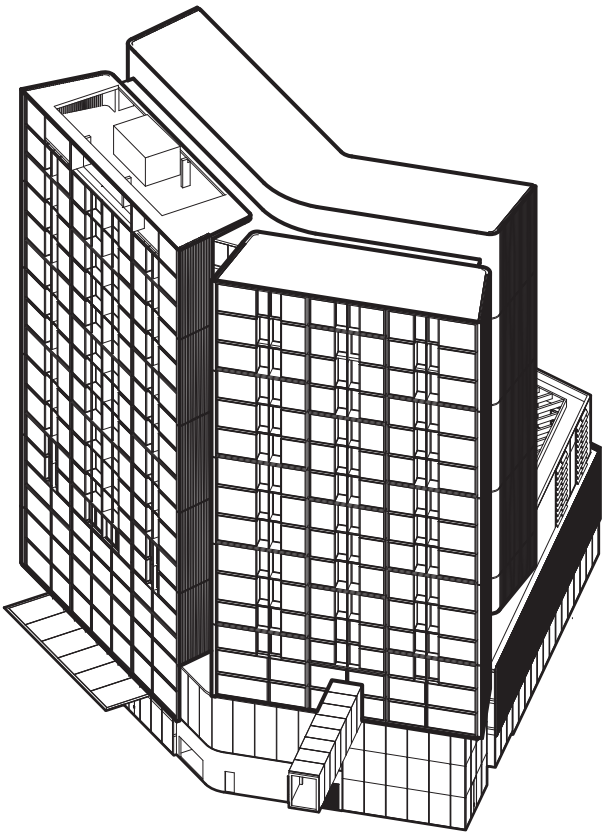


7
EASTERN TOWER MASS
LIFTED TO REVEAL GYM &
WELLNESS CENTRE ENTRY

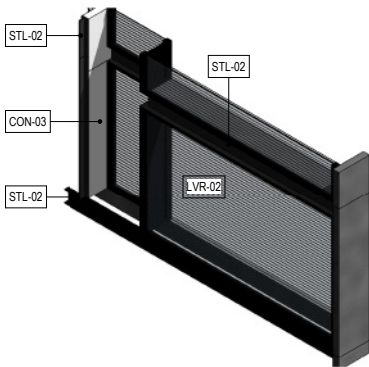
3.4 Envelope

The facade provides a unique response, whereby a standard module adapts across the building skin to account for a series of different conditions.

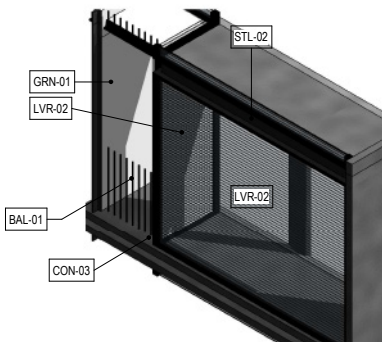
The primary focus is the provision of balconies, green walls, operable louvres and glazed operable doors to each hotel suite, enabling a unique variation of use capable of catering for the need of each individual patron, and providing a direct connection to the external conditions.



1 3D FACADE TYPE 01A



2 3D FACADE TYPE 01B

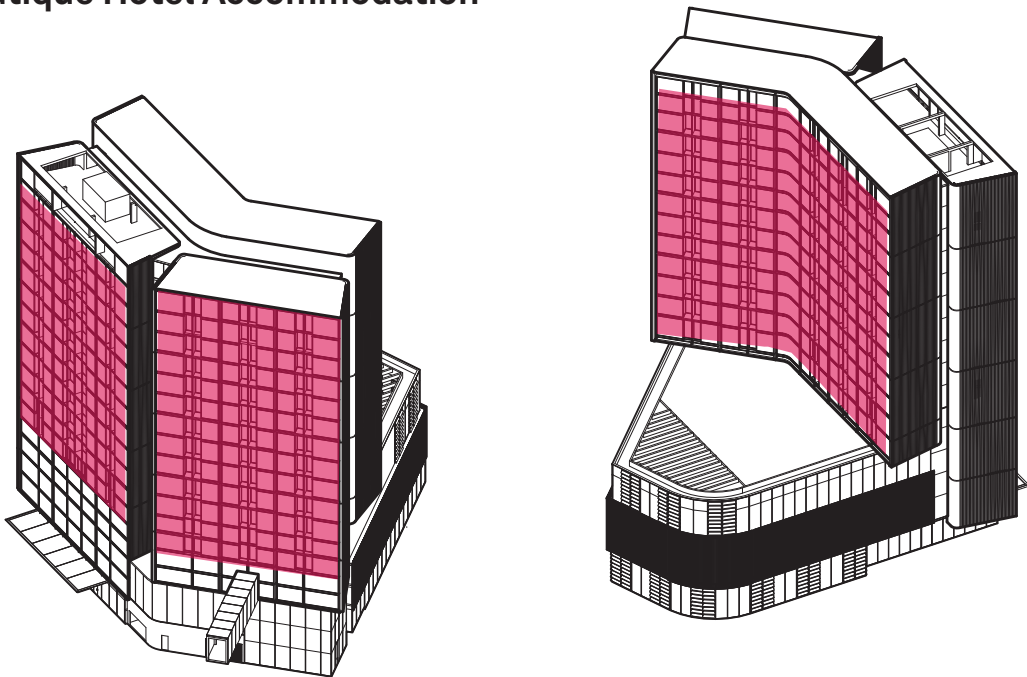


3 3D FACADE TYPE 01C



3.5 Key Brief Components

Boutique Hotel Accommodation



190 keys of boutique accommodation are provided over Levels 4-14, and will service the great tourism market, business travellers , patrons of the Parramatta Leagues Club, and visitors to the new Western Sydney Stadium.

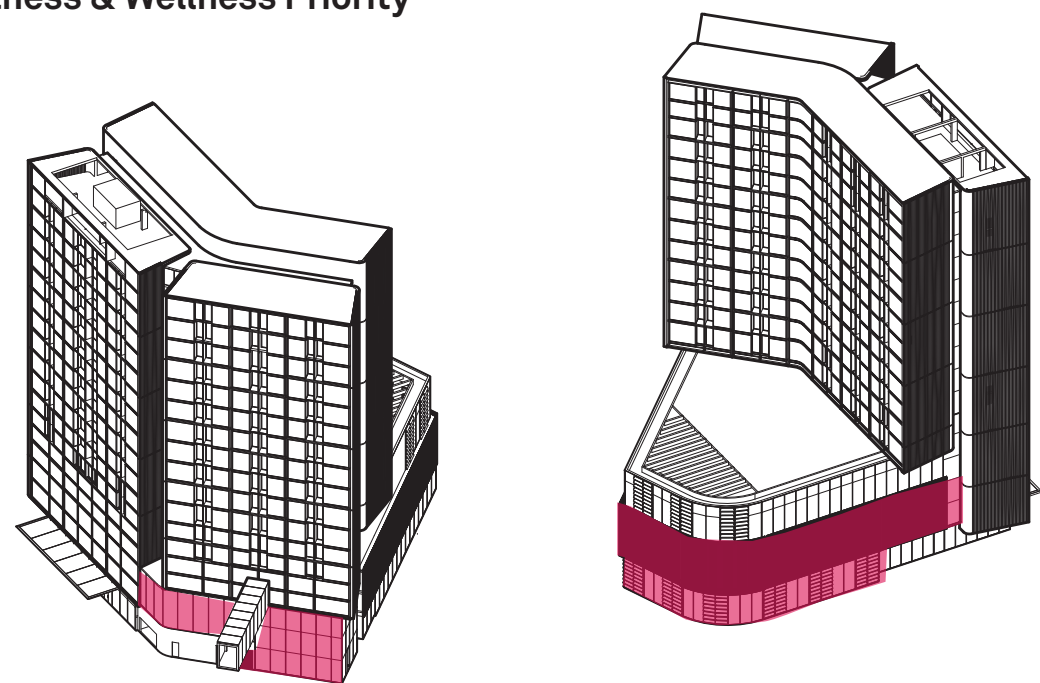
Accommodation options include :

- _Standard Suites
- _1 bed apartments
- _Accessible suites
- _Dual key suites



3.5 Key Brief Components

Fitness & Wellness Priority

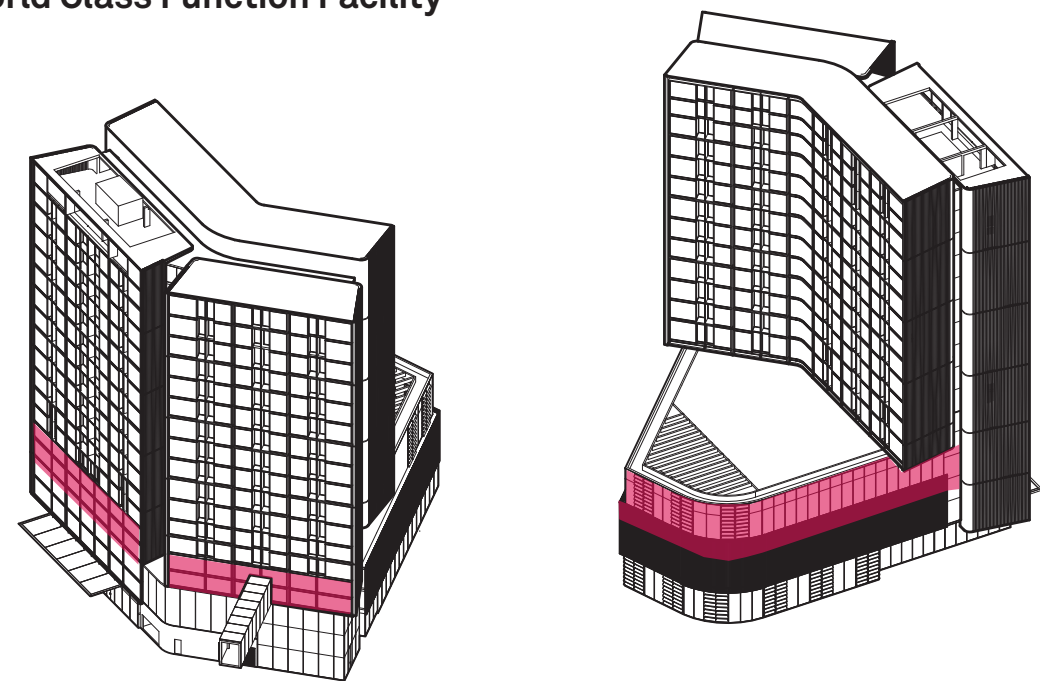


State of the art fitness and wellness facility provided for public and hotel patron use including yoga rooms, weights area and training facilities on Lower Ground and Level 1.



3.5 Key Brief Components

World Class Function Facility

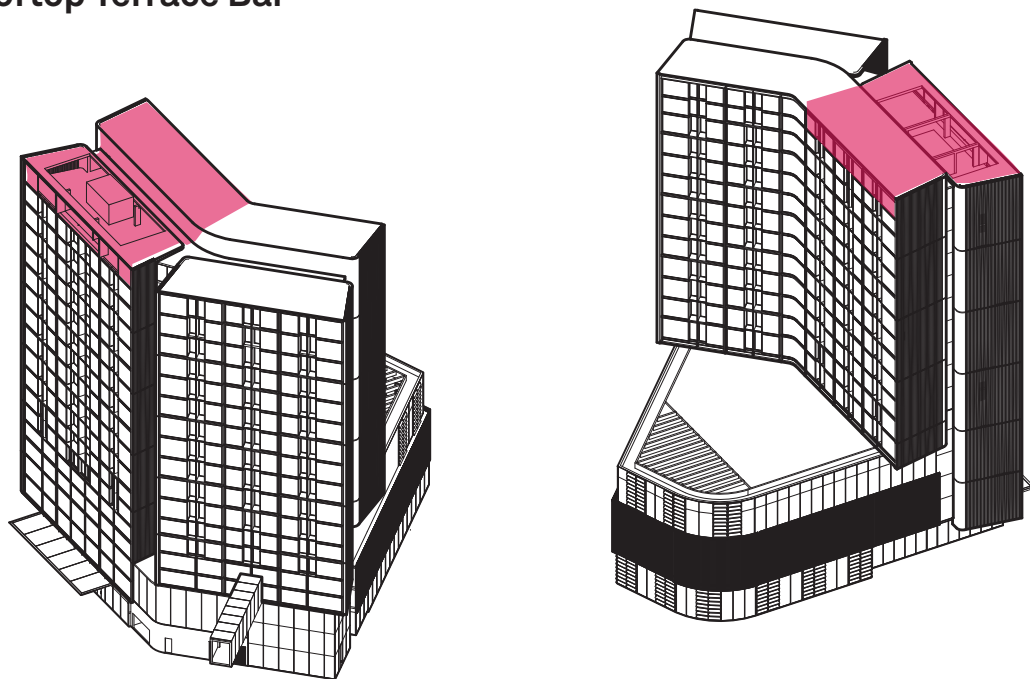


A Level 2 500pax capacity main function facility, with pre function foyer, bar area and on site commercial catering kitchen. Business facilities can also accommodate meeting areas for guests of up to 20. The main function room has a direct break out to a roofed external terrace.



3.5 Key Brief Components

Rooftop Terrace Bar

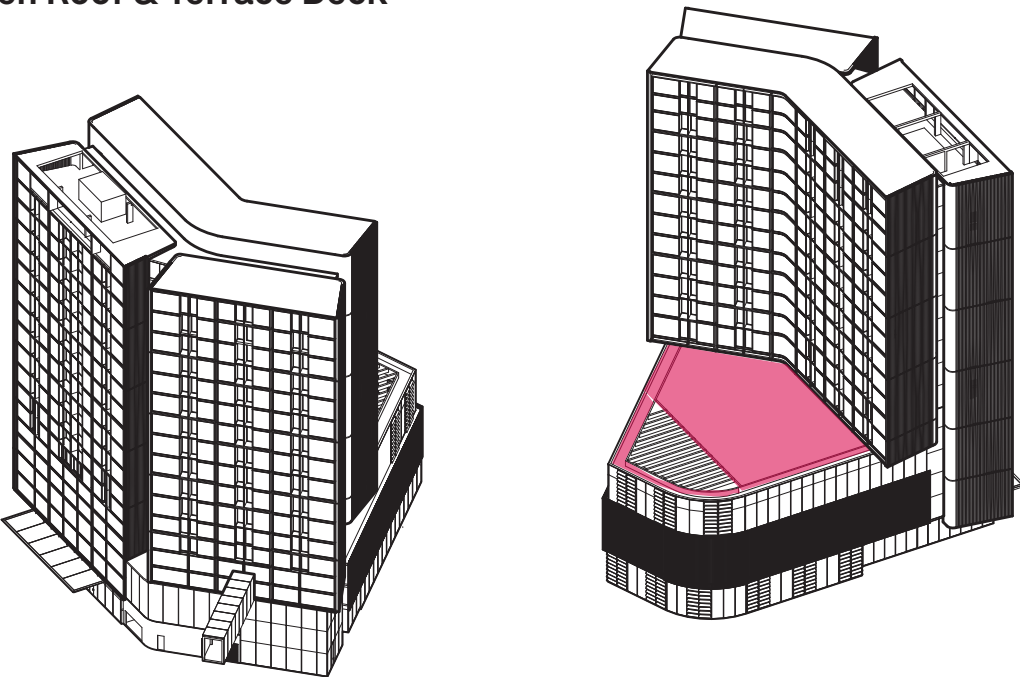


A Level 14 rooftop terrace bar with both internal bar areas and external open air terrace will provide spectacular views - both to the west to Parramatta Park, and to the east to the Parramatta CBD.



3.5 Key Brief Components

Green Roof & Terrace Deck



An external green roof gathering space, for reflection, wellness and open air function on Level 3.



3.6 Materiality



CODE REFERENCE: BAL-01
DESCRIPTION: Steel Post Balustrade
MATERIALS AND COLOURS: Colour: Charcoal Matte



BAL-02
Glazed Frameless Balustrade
Colour: Clear



CAN-01
Steel Framed Cantilevered Glazed Awning with integrated frit
Colour: Black Framing/Bronze Frit



CON-01
Glass Reinforced Concrete Blades (GRC)
Colour: Acid Wash with Micro Aggregate Finish



CON-02
Glass Reinforced Concrete Panels (GRC)
Colour: Colour: Acid Wash with Micro Aggregate Finish



CODE REFERENCE: CON-03
DESCRIPTION: Polished Concrete with Exposed Aggregate
MATERIALS AND COLOURS: Colour: White



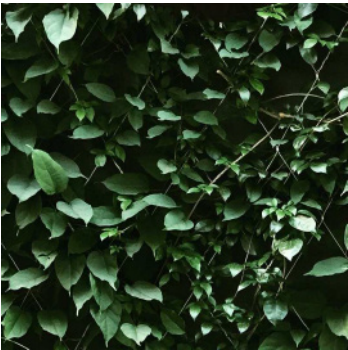
DT-01
Glazed Revolving Door
Colour: Clear/Black Framing



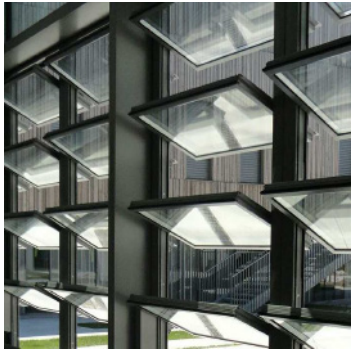
GL-01
Clear Glass
Finish: Clear



GL-02 / STL-02
Structural Glazing with Steel Subframing
Finish: Clear/Black Framing



GRN-01
SS wall mounted trellis system with planting and integrated irrigation
--



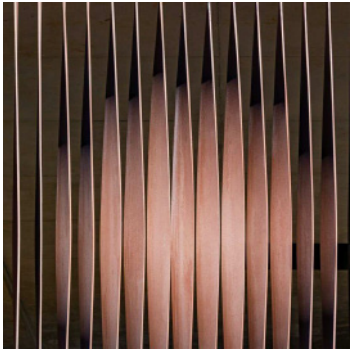
CODE REFERENCE: LVR-01
DESCRIPTION: Operable Acoustic Glazed Louvres with Aluminium Framing
MATERIALS AND COLOURS: Finish: Clear/Black



LVR-02
DGU with interstitial timber louvres and aluminium framing
Finish: Pale Timber/Black



LVR-03
Aluminium Weatherproof Louvre System (50% Open Area)
Colour: Silver Metallic (G30)



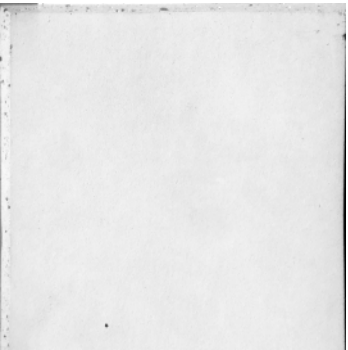
SCN-01
Aluminium Vertical Battens (Modulated Spacing)
Finish: Red/Brown (to match PLC Carpark)



STL-01
Aluminium Sheet Cladding
Colour: Charcoal Matt



CODE REFERENCE: CON-01 and CON-02
DESCRIPTION: Acid Wash GRC with Micro Aggregate Finish
MATERIALS AND COLOURS: Finish: Natural/Silica



CON-04
Off Form Concrete Class 2 Surface Finish
Finish: Natural



3.7 Visualisations





3.7 Visualisations



3.0 Visualisations

