

Sky lounge Level 32

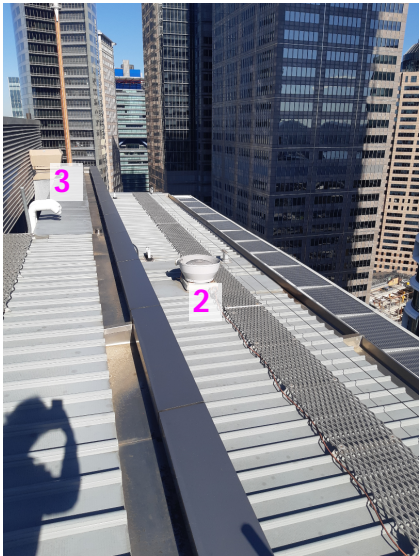
The Extension

The level 32 extension is subtle and elegant in its expression - it has been developed as a lightweight steel and glass structure that appears to float above the heavy concrete base of the existing tower. The metal framing of the extension is proposed as a dark bronze, non-reflective tone to complete the sandstone coloured heritage façades and concrete of the 1980s hotel.

The extension is modest in its expression and is deliberately recessive, complementing the existing building whilst being subtly read within the surrounding context.

The Stage 1 envelope established by Hassell has been respected with the new extension. Due to the existing constrained floor to ceiling height and a limit on the envelope the extension has been designed with a skylight that incorporates shading to control solar gains. Through solar analysis it is clear that the skylight and new western facade is sufficiently protected by the new Quay Quarter which is in construction.

It should be noted that Stage 1 envelope does not capture all of the existing services, for example some of the fan exhaust systems that serve the hotel.



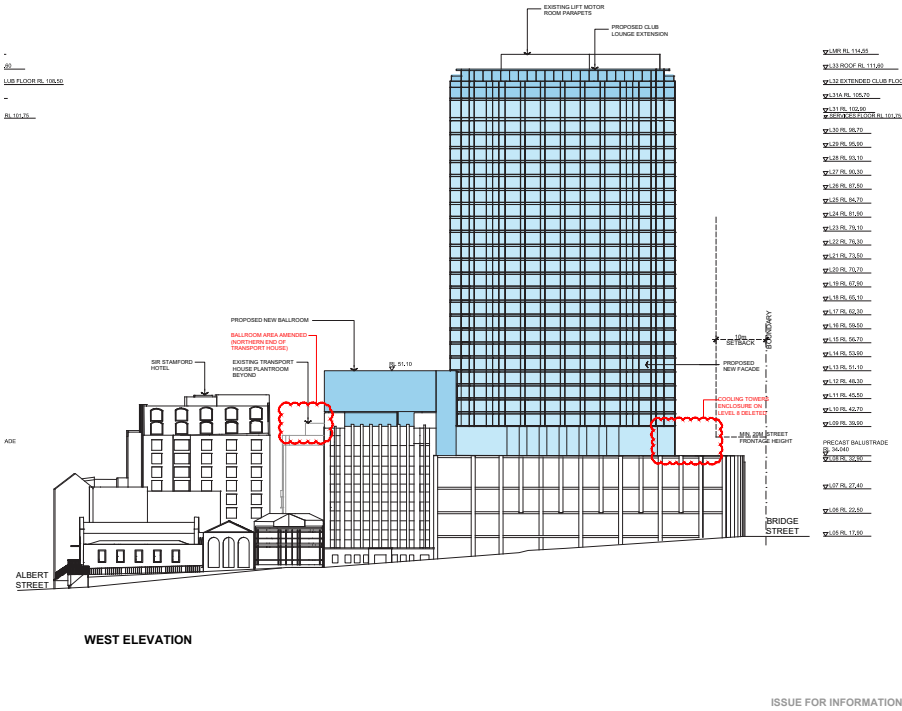
1. EXISTING FCU DUCTWORK TO BE RETAINED

2. EXISTING KITCHEN D/WASHER HOOD TO BE REPLACED WITH TWO SIMILAR FANS & RELOCATED SLIGHTLY NORTH TO SUIT NEW KITCHEN LAYOUT.

3. TOILET EXHAUST TO BE RETAINED OR REPLACED ON A LIKE FOR LIKE BASIS, SUBJECT TO FINAL VERIFICATION BY SERVICES ENGINEER.
- W-BTM

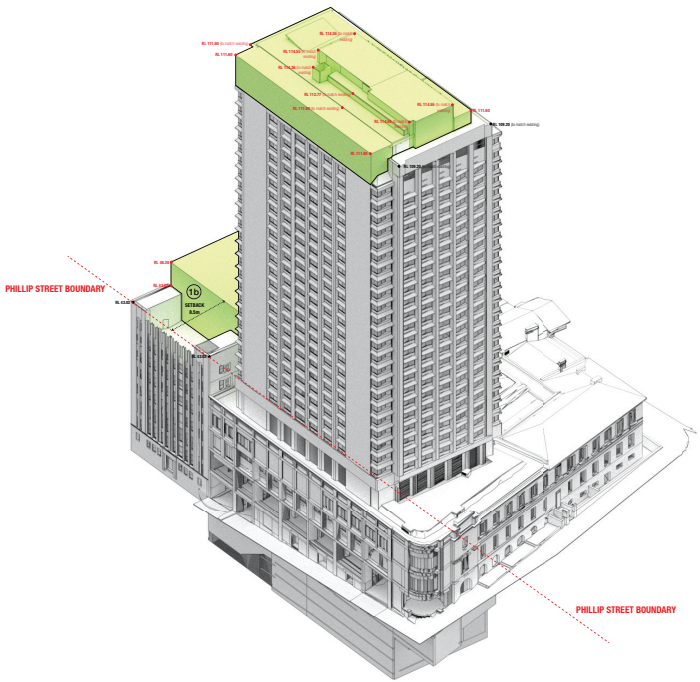
WOODS BAGOT

13/10/2020



SETBACK DIAGRAM | VIEW FROM SOUTH-WEST

- General Notes
- Transport House building envelope setbacks as shown are in accordance with consent condition A10
- (a) 20m setback from Macquarie Street
- (b) 8.5m setback from Phillip Street



INTERCONTINENTAL SYDNEY



- 01 Stage 1 envelope by Hassell
- 02 SEARS envelope axo by Woods Bagot
- 03 Stage 2 elevation
- 04 Stage 2 close up elevation / section

