

Our Ref: PGH:12-0411  
Your REF: **SSI-5100**



21 May 2012

Major Projects Assessment,  
Department of Planning and Infrastructure,  
GPO Box 39, SYDNEY, NSW 2001  
[plan\\_comment@planning.nsw.gov.au](mailto:plan_comment@planning.nsw.gov.au)

Attention: Director, Infrastructure Projects

Dear Sir/Madam

**North West Rail Link (SSI-5100)**  
**Submission Kindalin Childcare Centre, No.1 Glenhope Road West Pennant Hills**

We act for Kindalin Early Childhood Learning Centres Pty Ltd ("**Kindalin Childcare**"). The Centre is located at Lot 1 DP 789295, 1 Glenhope Road, West Pennant Hills (corner Castle Hill Road), directly opposite the proposed Cherrybrook Station.

Further to our recent meeting on 19<sup>th</sup> April 2012 with Cecilia Densham and other representatives and following a review of the Environmental Impact Statement on exhibition (Environmental Impact Statement Stage 1-Major Civil Construction Works) we provide a number of comments for the Department's consideration.

We confirm that our clients' primary aims are to protect the health and wellbeing of the children; maintain the operational capability of the Centre; and ensure that the construction phase of the Northwest Rail Link will be managed in a matter to allow the childcare centre to operate with minimal disruption during the lengthy construction period.

**Background**

Kindalin Childcare operates a childcare facility within close proximity of North West Rail Link Site 4 – Cherrybrook Station (immediately opposite Castle Hill Road to the south). Kindalin Childcare is located within an existing purpose built centre. It was established in 1994 and is licenced to provide day care services for up to 58 children aged between 0 and 6 years. The centre operates between 7.30am and 6.00pm five days per week, 50 weeks a year.

The location of the Centre is identified in the following diagram (Extract from EIS).

Submission\_Kindalin\_Norwest Rail Link\_210512

Figure 14.3 Land use and community facilities – Cherrybrook station site

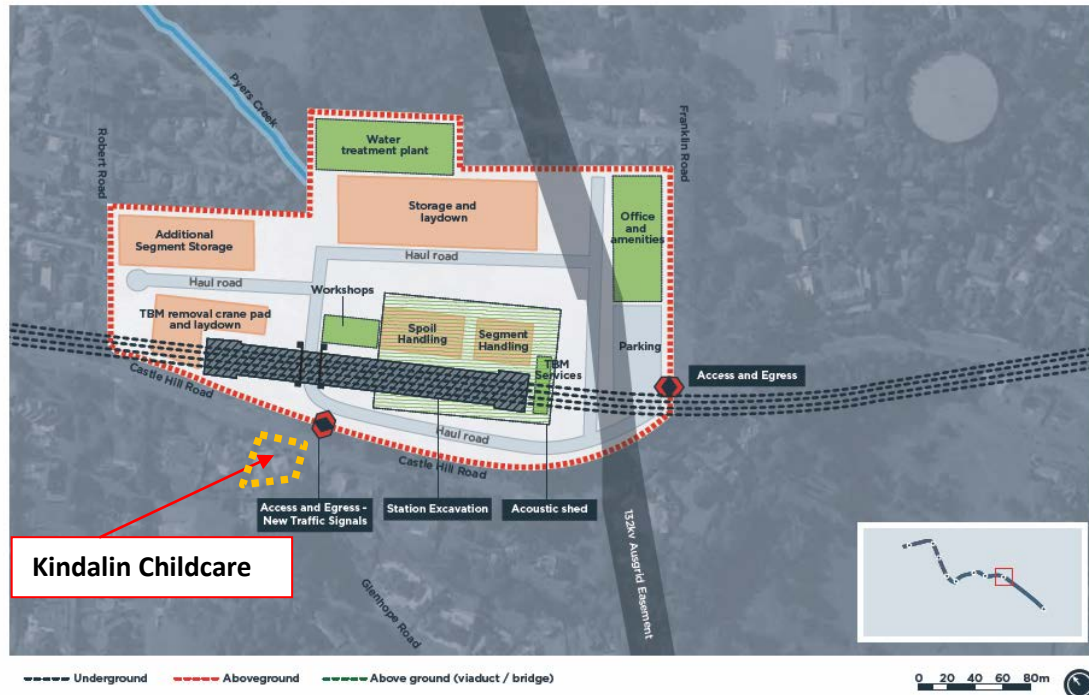


Extract: Environmental Impact Statement Stage 1-Major Civil Construction Works (Chapter 14 Land Use and Community Facilities - Figure 14.3).

The Environmental Impact Statement Stage 1 - Major Civil Construction Works (the **EIS**) for the Northwest Rail Link (currently on exhibition) identifies a proposed station (Site 4 - Cherrybrook Station) in close proximity to the site. The layout of the site is provided in the extract below.

Figure 7.15 Cherrybrook Station Site Layout

Details shown are indicative only. Final layouts to be determined by the construction contractor(s)



Extract: Cherrybrook Station Site Layout (Chapter 7 Project Description - Figure 7.15).

The proposed works are likely to result in conflicts with the existing childcare services, consequently we have provided comments in regard to the operation of the childcare centre, and outlined a number of concerns, together with proposed management measures for consideration by the Department of Planning and Infrastructure.

## 1. Operation

As stated previously, Kindalin Childcare provides child care services for three age groups (babies, toddlers and pre-schoolers). This consists of twenty (20) children aged 0-2 years, eighteen (18) children aged 2-3 years and twenty (20) children aged 3 -6 years. The babies and toddlers share the ground floor rooms while the pre-school aged children occupy the lower ground floor areas.

The centre is located on the corner of Glenhope Road and Castle Hill Road. The internal layout of the centre provides for verandah areas and playground areas that are oriented to the north, fronting Castle Hill Road. The majority of windows are oriented to the east, north and west with the windows to the south overlooking the rear car parking area. The site is accessed via a driveway from Glenhope Road which also provides a short term drop off area for parents and parking for staff. A turning area allows vehicles to exit in a forward direction on to Glenhope Road.

The centre provides a structured program for children that includes a range of activities. These include a combination of active and quiet activities, group and independent learning, with time spent both indoors and outdoors. Importantly, a 2 hour sleeping/rest period is provided between the hours of 1.00pm and 3.00pm.

Successful management of the child care centre relies on the consistency of routines provided throughout the day. Disturbance and variation to timetables can interfere with the successful operation of the facility and has the ability to impact on the provision of quality care to the children.

It is noted that the proposed construction phase lasts for approximately 42 months (3 ½ years) (*EIS – Chapter 14 Land Use and Community Facilities*) and therefore has the ability to inflict significant long term impacts on the functioning of the childcare centre. These impacts are described as ‘reduced amenity’ within the EIS and are further identified within the Traffic, Noise and Vibration and Air Quality chapters (*Chapters 9, 10 and 19*) of the EIS. Specific concerns in relation to these matters have been outlined below.

## **2. Noise and Traffic**

The noise and traffic impacts are associated with construction works at Cherrybrook Station. This construction involves spoil removal activities and associated truck movements over a 24 hour operation/7 days per week and construction of a new access point (traffic lights) immediately adjacent to Kindalin Childcare. The majority of truck movements are anticipated between the hours of 7am to 6pm and involve truck-and-dog or semi-trailer tippers able to carry 12.5m<sup>3</sup>. The technical paper (*Construction Traffic and Transport Management, Tables 2.4 & 2.5*) estimates overall tunnelling heavy vehicle movements for Cherrybrook Station at 29,600 trucks or 275 per day (one way).

This is a significant increase in daily truck movements in the immediate vicinity of the site. The concerns of the childcare centre relate to the potential impacts associated with noise and traffic impacts for the construction of Cherrybrook Station, specifically:

- Frequency and noise of associated truck movements associated with daytime operations (7am – 6pm) including impacts on both indoor and outdoor activities.
- Impacts of traffic on the functioning of the car park area during peak traffic times for the centre (drop off and pick up) during the hours 7.30am. -10.00am and between 4.00pm and 6.00pm.
- Sleep disturbance for children during daytime rest period (1.00pm to 3.00pm).

The EIS nominates the childcare centre (30metres from the works) as a sensitive receiver with predicted noise levels exceeding the required levels during the daytime period [*NML (Noise Management Levels) exceedances greater than 20dB predicted*] for the Earthworks, Site Establishment and Excavation phases of the works (*EIS – Chapter 10 Noise and Vibration – Construction - Table 10.11 Predicted noise level exceedances at Cherrybrook Station*).

Although the EIS indicates an acoustic shed will be established as a mitigation measure to reduce airborne noise impacts at sensitive receivers during the night-time period, it is unclear what measures will be put in place to manage noise in the vicinity of Kindalin Childcare during daytime hours.

It is therefore requested that the Department of Planning and Infrastructure consider specific measures to reduce the impacts of noise on Kindalin Childcare during daytime hours and assess any reduction in noise levels associated with installation of acoustic mitigation measures (i.e. by what margin would the NMLs exceed the required levels following implementation of mitigation measures).

### **3. Air Quality**

Air quality is described within the EIS as a non-key environmental impact (*Chapter 19 Assessment of Non-Key Issues*). The EIS states 'The sources are considered temporary in nature and would be confined to the construction period' (page 19-3). Given the construction period extends over a period of 42 months for Cherrybrook Station, the description of potential air quality impacts as being 'temporary' in nature is questionable.

Kindalin Childcare is identified within the EIS as a 'sensitive receiver' in relation to air quality, with potential air quality impacts originating from establishment of work site, building demolition, earthworks, removal, storage and/or transport of some 60,000m<sup>3</sup> of spoil from the station cavern excavation and 370,000m<sup>3</sup> from the tunnelling works, and exhaust emissions from operation of construction vehicles and plant (page 19-7).

The nature of a childcare centre means that children undertake a range of activities both indoor and outdoor. Kindalin Childcare at West Pennant Hills offers a range of activities that vary throughout the year, depending on the summer or winter weather. Children are not all outdoors at the same time, therefore the amount of time the children (as a whole) spend outside extends over quite a period of time (summer 8.30am – 11.00am and 3.15pm – 6.00pm and winter approximately 8.30am – 11.30am and 3.15pm – 4.00pm).

A number of children within the centre suffer from a range of health issues, including those that suffer from serious asthma (9% of children at time of writing) and an additional number of children who take medication for asthma on a short term basis. A number of children suffer from eczema conditions, which can be exacerbated by extended periods of air conditioning. This condition may be triggered if children are forced by air quality impacts to spend extended periods indoors.

It is understood that a number of air quality mitigation measures are proposed during construction works, through which dust and exhaust emissions can be 'largely controlled' (page 19-13). The concern of Kindalin Childcare is the nature of the mitigation measures that will be employed to minimise the direct impacts on the children and staff of the centre, specifically nature and type of wind breaks, hoardings, stockpile locations, debris screens etc.

### **4. Amenity**

The economic analysis (EIS – Chapter 13 Local Business Impacts) identifies that operating amenity of locations such as Kindalin Childcare can be affected by construction activity, resulting in potentially negative employee productivity, interaction with customers and workplace ambience.

### **5. Implementation of Management Measures**

As part of the construction Management process going forward we request the following in regards to Kindalin Childcare:

- Construction of a heightened perimeter wall along the Castle Hill Road and Glenhope Road frontage of the site to provide an appropriate acoustic barrier between the site and predicted noise sources. The final height would need to be clarified by the Acoustic Engineer; however it is understood from the submitted Noise and Vibration Report that noise impacts can be reduced through provision of acoustic barriers.

- Details of operational measures to be implemented to monitor and clean the outdoor play areas of the child care centre in the event that dust and material from construction activities cannot be contained.
- On-going consultation and review with Centre management during the construction phase to monitor the effectiveness of acoustic barriers and implementation of alternative measures as deemed necessary.

## **Conclusion**

As outlined within this submission, our clients' primary aims are to protect the health and wellbeing of the children; maintain the operational capability of the Centre; and ensure that the construction phase of the Northwest Rail Link will be managed in a manner to allow the childcare centre to operate with minimal disruption during the lengthy construction period.

This includes provision of:

- a heightened perimeter wall along the Castle Hill Road and Glenhope Road frontage;
- implementation of operational measures to monitor and clean the outdoor play areas;
- on-going consultation and review with Centre management during the construction phase to monitor the effectiveness of acoustic barriers; and
- Implementation of alternative measures as deemed necessary.

We trust that this submission assists the Department. Our Clients would like the opportunity to further discuss the matter with Departmental officers.

It would be appreciated if contact could be made with our office to make suitable arrangements.

Yours faithfully

PGH Environmental Planning



**Patrick Hurley**

Director

*cc/- Kindalin Early Childhood Learning Centres*