



**CRANBROOK
SCHOOL**

August 2018

Community Use Management Plan for the Proposed New Facilities

Hordern Oval Precinct Redevelopment



Table of Contents

Introduction	2
The Site	2
School Operating Hours	2
Typical School operating hours	2
Aquatic Centre proposed operating hours:	2
Chapel proposed operating hours:	2
Centenary Building including the Multi-Purpose Hall and Theatre proposed operating hours:	2
Chapel	2
Community Operations.....	2
Aquatic and Fitness Centre	3
General Operations.....	3
Learn to Swim Program	3

Introduction

This plan has been prepared by Cranbrook School to provide an indicative operation strategy for potential community use in the proposed new facilities being the Learn to Swim facility which forms part of the Aquatic and Fitness Centre and the Chapel with forms part of the Centenary Building.

The Site

The School campus is located at 5 Victoria Road, Bellevue Hill and is surrounded by Rose Bay Avenue and New South Head Road. The new Centenary Building, Carpark and Aquatic and Fitness Centre are to be located on the north-eastern portion of the site fronting Rose Bay Avenue and New South Head Road. Currently the War Memorial Hall and Mansfield buildings and Hordern Oval make up the new projects site area.

School Operating Hours

School base operating hours are as follows:

Typical School operating hours

Senior School hours for students: Mon to Friday - 08:15am to 3:20pm

School reception operating hours: Mon to Friday - 08:00am to 6:00pm

Sports training: Mon to Friday – 6:30am to 8:00pm

Sports Competition: Saturdays - 8:00am to 3:00pm

Extracurricular activities occur outside core school hours on weekdays, weekends and public holidays.

Aquatic Centre proposed operating hours:

Mon to Sat: 06:00am to 9:00pm

Sun: 06:00am to 6:00pm

Chapel proposed operating hours:

Predominantly during typical School operating hours. Special events such as parent, student and school community services will occur periodically throughout the year.

Centenary Building including the Multi-Purpose Hall and Theatre proposed operating hours:

Predominantly during typical School operating hours. Special events such as exhibition and theatrical productions, prize giving's and parent teacher evenings will occur periodically throughout the year.

Chapel

Community Operations

The Chapel will be utilised by the School throughout the Schools standard operating times and for School events and occasions. Outside of the Schools operating hours and School event times the Chapel may be available for community use. A booking system via the School reception telephone line will be available to make such bookings. A yet to be determined hire fee and bond would need be charged to cover catering, staffing, security costs and wear and tear costs.

Manned security would need to be provided given the Chapels proximity to the boarding facilities on site to ensure prospective third-party hirers remain within the confines of the chapel and an agreed perimeter.

Aquatic and Fitness Centre

General Operations

The facility will be used by students for the following:

- Curricular and co-curricular programs;
- Strength and fitness training;
- Basketball;
- Water Polo;
- Swim squad training;
- Lifesaving;
- PDPHE lessons;
- Fitness/strength and conditioning training;
- Physiotherapy consultation; and
- Learn to swim for Preparatory and Junior School students.

It will also be used for learn to swim programs for children who may or may not be students of the School.

Swimming squad training for both students and other children would also continue.

The School plans to provide a Learn to Swim (LTS) program for up to 3,500 lessons/week along with other pool activities which will operate year-round.

The wider School community includes students, parents, siblings & alumni,

Learn to Swim Program

The School currently operates public learn to swim classes in its existing 25 metre pool and these learn to swim classes are proposed to continue in the new learn to swim pool within the Aquatic and Fitness Centre. These learn to swim programs are for children who may or may not be students of the School and are expected to run for various levels of ability for 30-minute periods, between 9.30am and 7.30pm Monday to Friday, 7.30am to 5.00pm Saturday and 7.30am to 12.30pm on Sundays.

Carparking for the learn to swim operations will be both within the new 124 space underground carpark and on street. On street parking will be freed up though the provision of the new underground carpark.

Learn to swim users will be charged a yet to be determined market driven cost for attending the learn to swim classes.

Security

The design of the Aquatic and Fitness Centre has been modelled on similar centres with specific design features to ensure the security of all users. Patrons can either access the facility via the underground carpark. The underground carpark will have boom gates to control access. The underground carpark has two access points to areas of the School campus. The first is to the Aquatic and Fitness Centre reception. Once within the reception area patrons will need to be attended to by the receptionist before being allowed to move through the secure turnstiles and into the changeroom and learn to swim pool. The second access point from the underground carpark will be controlled by swipe card to avoid any person outside of the School community access to the greater campus.

The alternative access for patrons using on street parking or pedestrian access is via the doors located on Rose Bay Avenue which lead directly to the reception area.

All other doors are provided for School or fire use only.

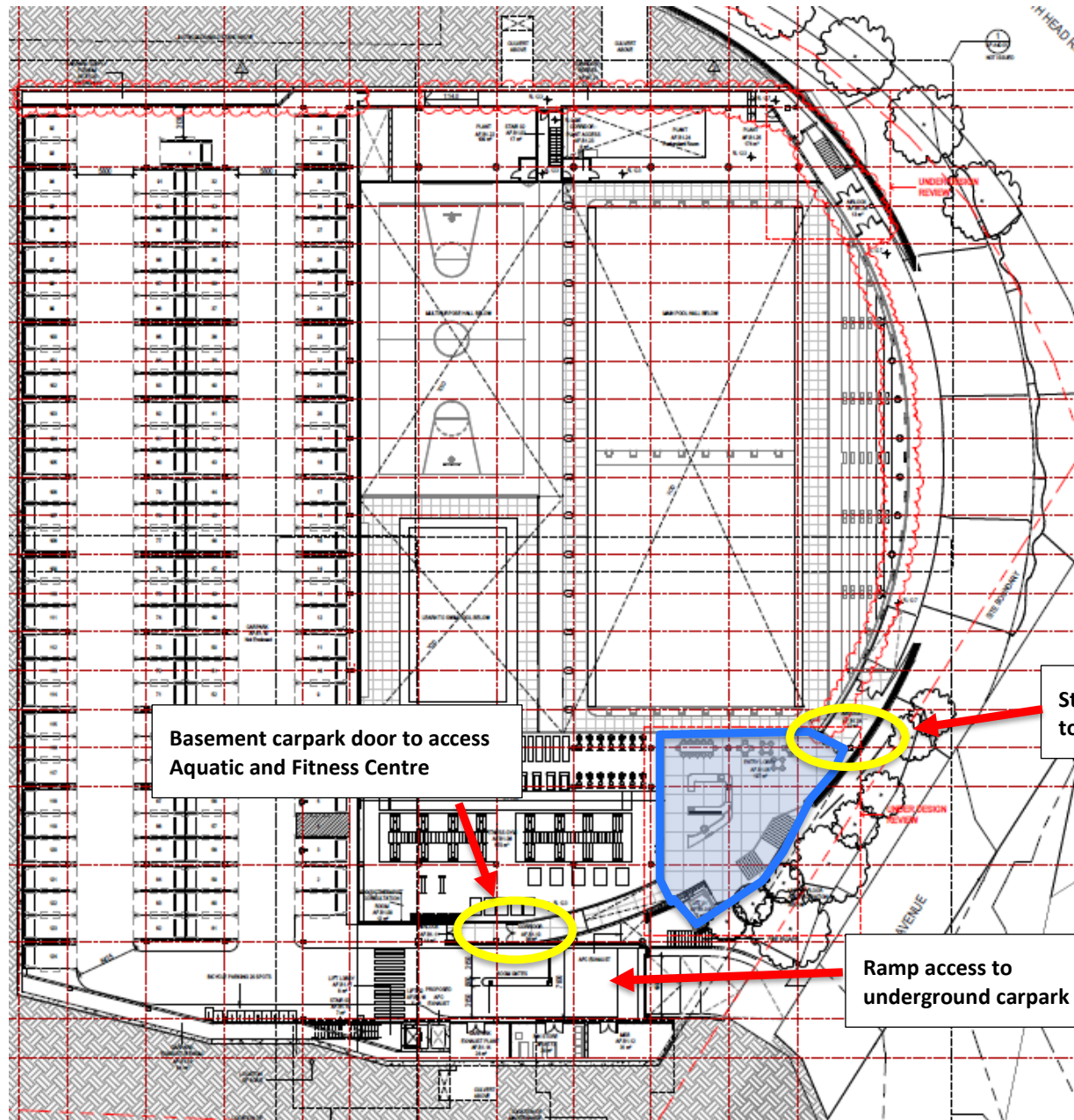
Please refer to the plans included in Appendix A for further details.

Appendix A

Aquatic and Fitness Centre Plans



Aquatic & Fitness Centre Concourse Level

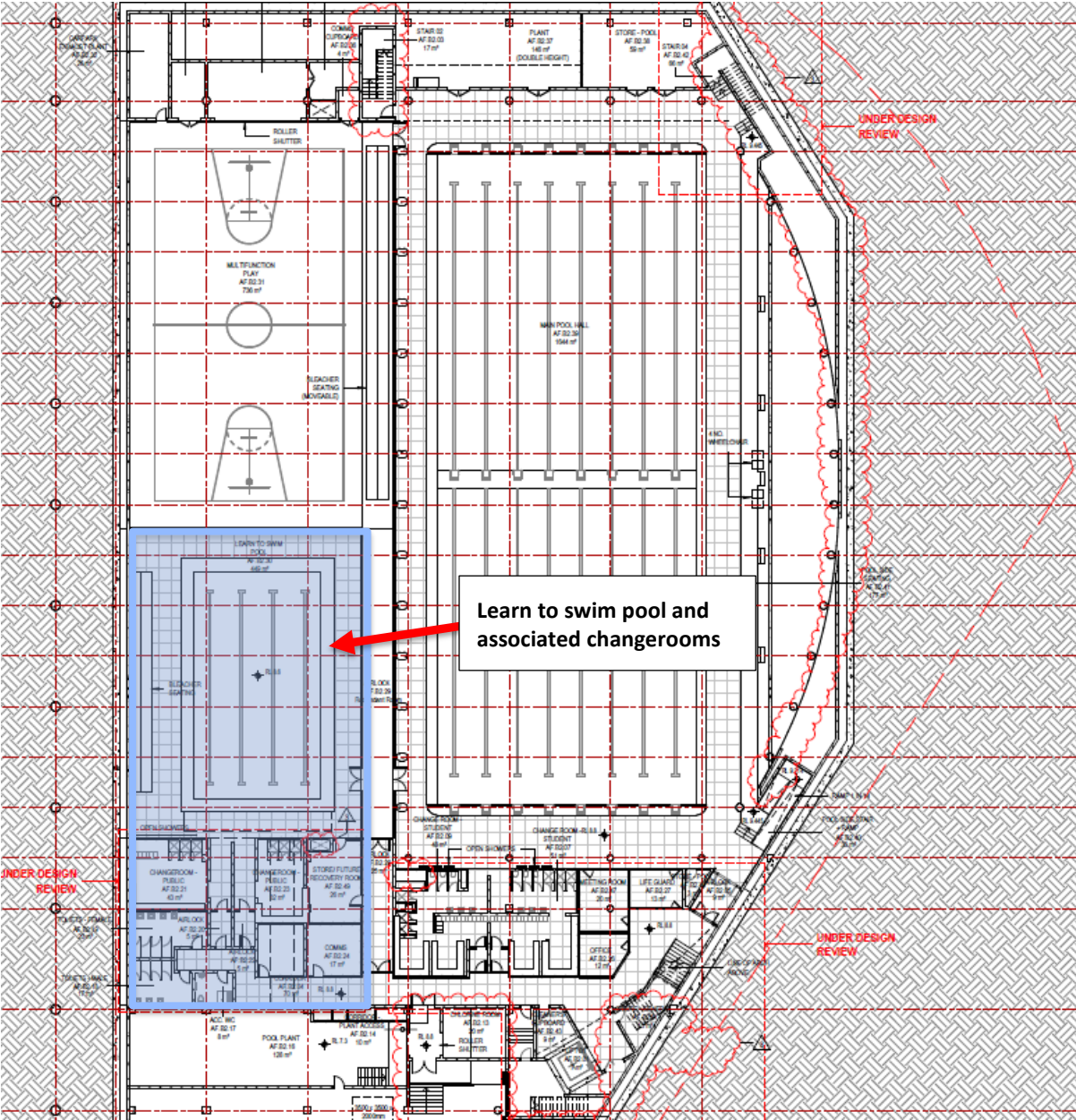


Basement carpark door to access
Aquatic and Fitness Centre

Street address door for access
to Aquatic & Fitness Centre

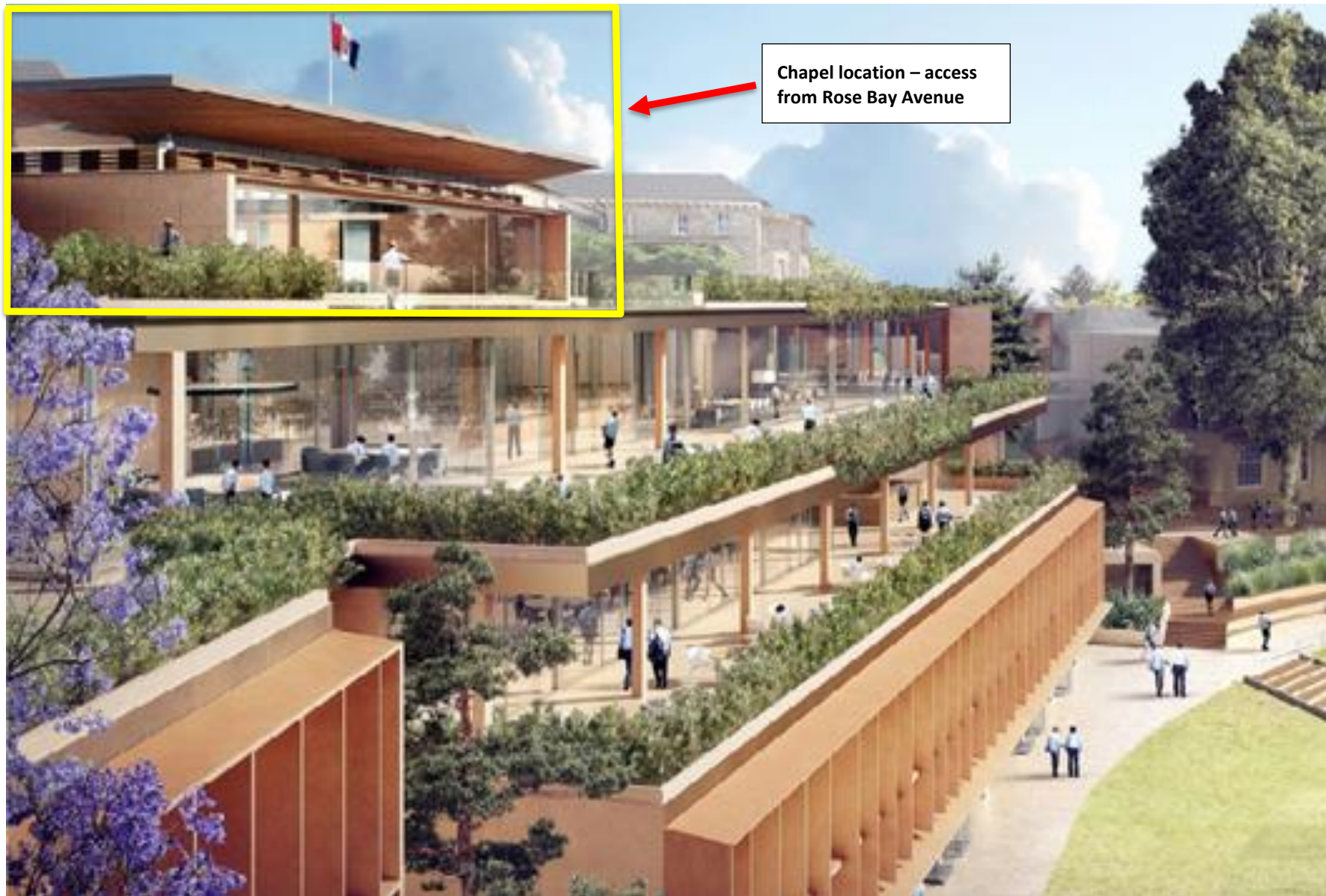
Ramp access to
underground carpark

Aquatic & Fitness Centre
Pool Hall Level

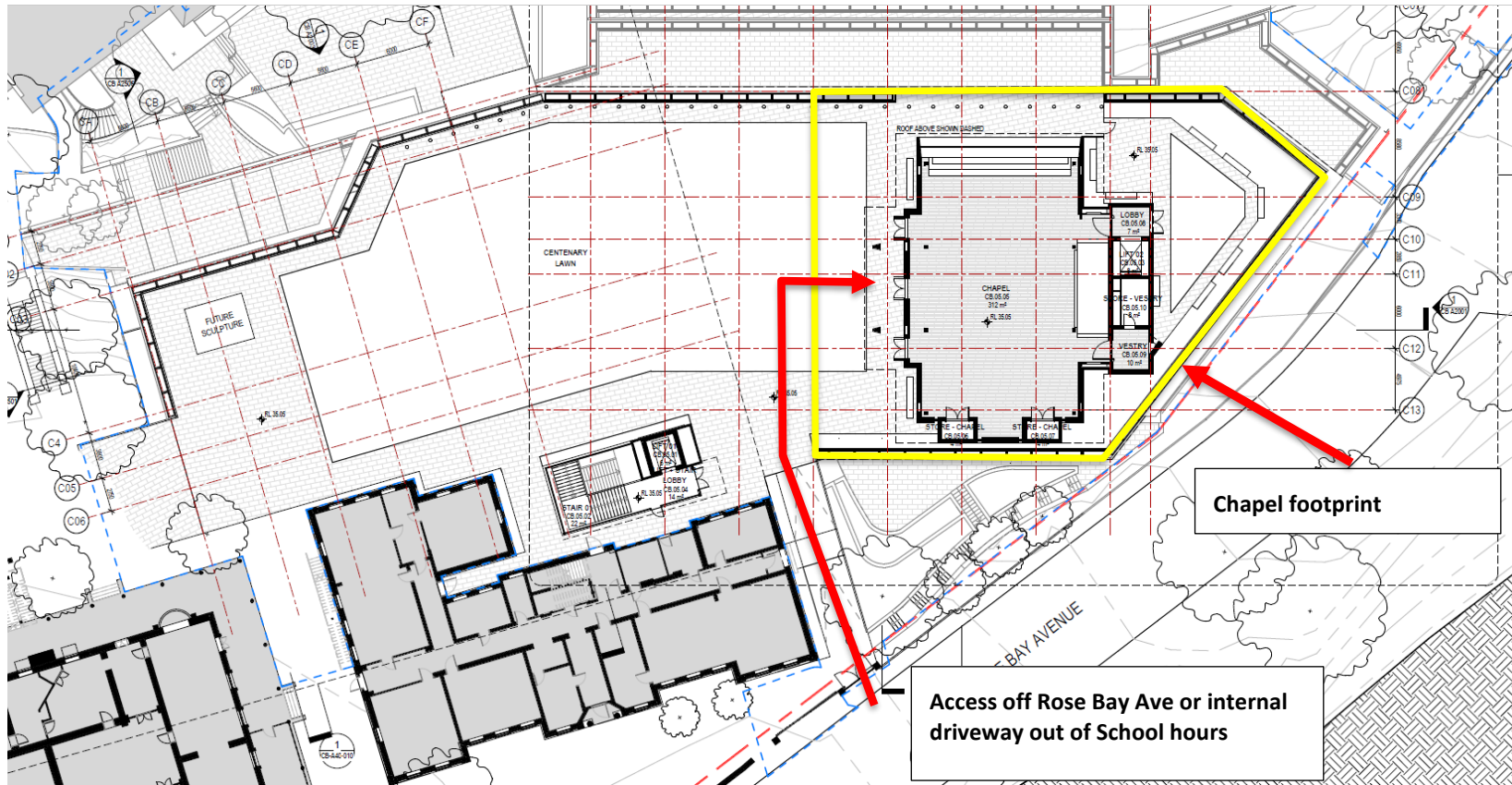


Appendix B

Chapel Plans



Chapel location – access
from Rose Bay Avenue



Chapel
Heritage Lawn Level