

17th December 2018

Michael Nasiry
EPM Projects
Level 2, 146 Arthur Street
North Sydney
NSW, 2060

Cranbrook Senior School (SSD 8812) – Permanent Signs and Pavement Marking Alterations

Dear Michael,

ptc. has been engaged by Cranbrook School, to provide traffic consultant advice in relation to the State Significant Development Application (SSD) for Cranbrook School, Bellevue Hill (SSD 8812).

This letter has been prepared to accompany the proposed alterations to the traffic signs and pavement marking on Rose Bay Avenue following the completion of the redevelopment of the school.

The alterations required are to accommodate the following items:

- The relocation of the 100-metre-long on-street kiss and drop facility to the existing internal driveway and the conversion of these spaces to unrestricted parking,
- The provision of two, 15-metre-long loadings zones to accommodate Medium Rigid Vehicles, on Rose Bay Avenue, to operate between 9.20am and 2.30pm, Monday to Friday,
- The provision of two, 20-metre-long School Bus Zones, on Rose Bay Avenue, to operate on school days only, and
- The three sections of 'No Stopping' zones, totalling 55 metres in length along Rose Bay Avenue, to aid vehicle manoeuvrability and visibility.

The proposed alterations to the on-street signage are shown on plans 2288C/PTC-001 and PTC-002, prepared by **ptc.**

Summary of Changes to Car Parking

A summary of the current and proposed (post development) on-street parking available in the vicinity of the school is summarised below:

Parking Restriction	Current Approximate Number of Spaces	Proposed Approximate Number of Spaces	Change
Un-Restricted	98 spaces	106 spaces	+8 spaces
10P Parking (8am to 8pm mon to fri)	3 spaces		-3 spaces
Drop off & Pick Up (8am to 9am and 2.30pm to 4pm mon to fri)	16 spaces	18 provided on campus	+2
Restricted parking (9am to 2.30pm and 4pm 8am mon to fri, 24 hours sat and sun)	16 spaces (Drop off & pick up spaces between 8am to 9am and 2.30pm to 4pm mon to fri)		-16 spaces
Loading Zone (9am to 2.30pm mon to fri)		2 spaces (15m)	+2 spaces
School Bus Zones (Schools Days Only)		2 spaces (20m)	+2 spaces
Restricted parking (2.30pm to 9 am mon to fri, 24 hours sat and sun)		6 spaces (Loading Zone between 9am to 2.30pm mon to fri)	+6 spaces
Restricted Parking (non school days)		6 spaces (school bus zone, school days)	+6 spaces

This results in:

- Net gain of 5 un-restricted parking (including the existing 10P parking)
- Net loss of 4 restricted parking spaces
- The proposed changes are located on Rose Bay Ave. There are no proposed changes to the parking restrictions on Victoria Road.
- In addition to the 18 drop off and pick up spaces, a total of 124 parking spaces will be provided on site as part of the redevelopment. This represents an additional 95 spaces including the 29 spaces displaced from the internal driveway.

Conclusion

Based on our assessment, we believe that the proposed alterations are suitable to manage the changes proposed to the on-street parking restrictions and should be implemented upon completion of the proposed redevelopment of the school.

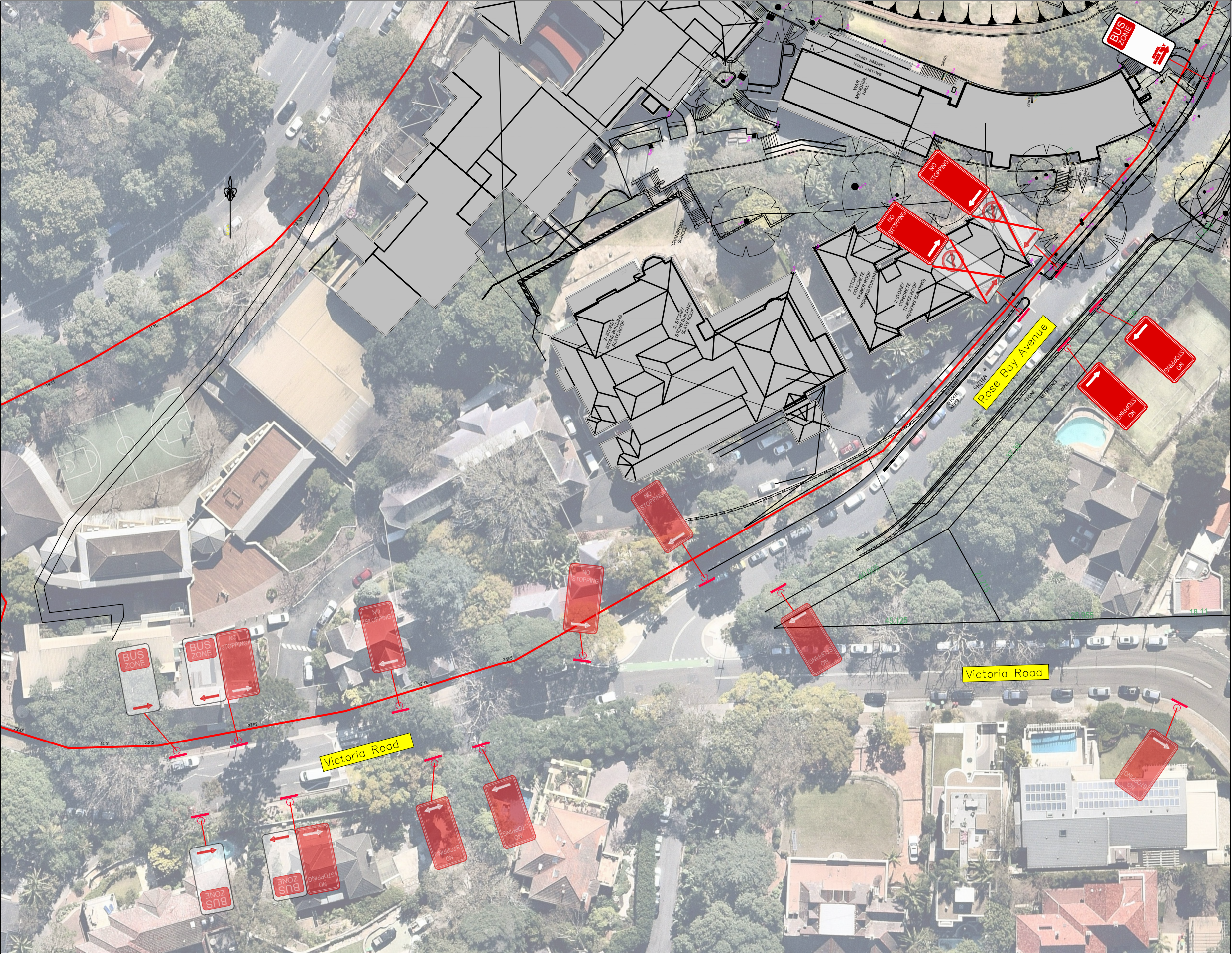
We trust the information provided will assist in the assessment of the SSDA. If you have any further enquiries relating to a parking or traffic matter, please contact our office on (02) 8920 0800.

Kind regards,



Steve Wellman
Senior Traffic & Civil Engineer

Attachment 1 Proposed Signage and Pavement Markings Alterations



COMMENTS

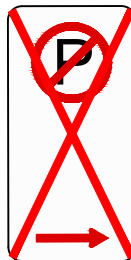
A3



Existing Signage



Proposed Signage



Signage to be removed

- GENERAL NOTES:
1. All dimensions in metres unless stated otherwise.
 2. All pavement markings and signage to be in accordance with RMS Guide to delineation, AS1742 and AS1743.
 3. All road signs to be size A unless stated otherwise.
 4. Exact location of signs to be agreed with on site, prior to installation.

ptc.

Suite 102, 506 Miller Street, Cammeray NSW 2062
t +61 2 8920 0800
ptcconsultants.co

REV	DATE	COMMENT	DRAWN	REVIEWED	REV	DATE	COMMENT	DRAWN	REVIEWED
2	17/12/18	RTS submission	SH	SW					
1	26/11/18	For information	SH	SW					



PROJECT:
CRANBROOK SENIOR
SCHOOL

DRAWING TITLE:
Proposed Signage Alterations
Sheet 1

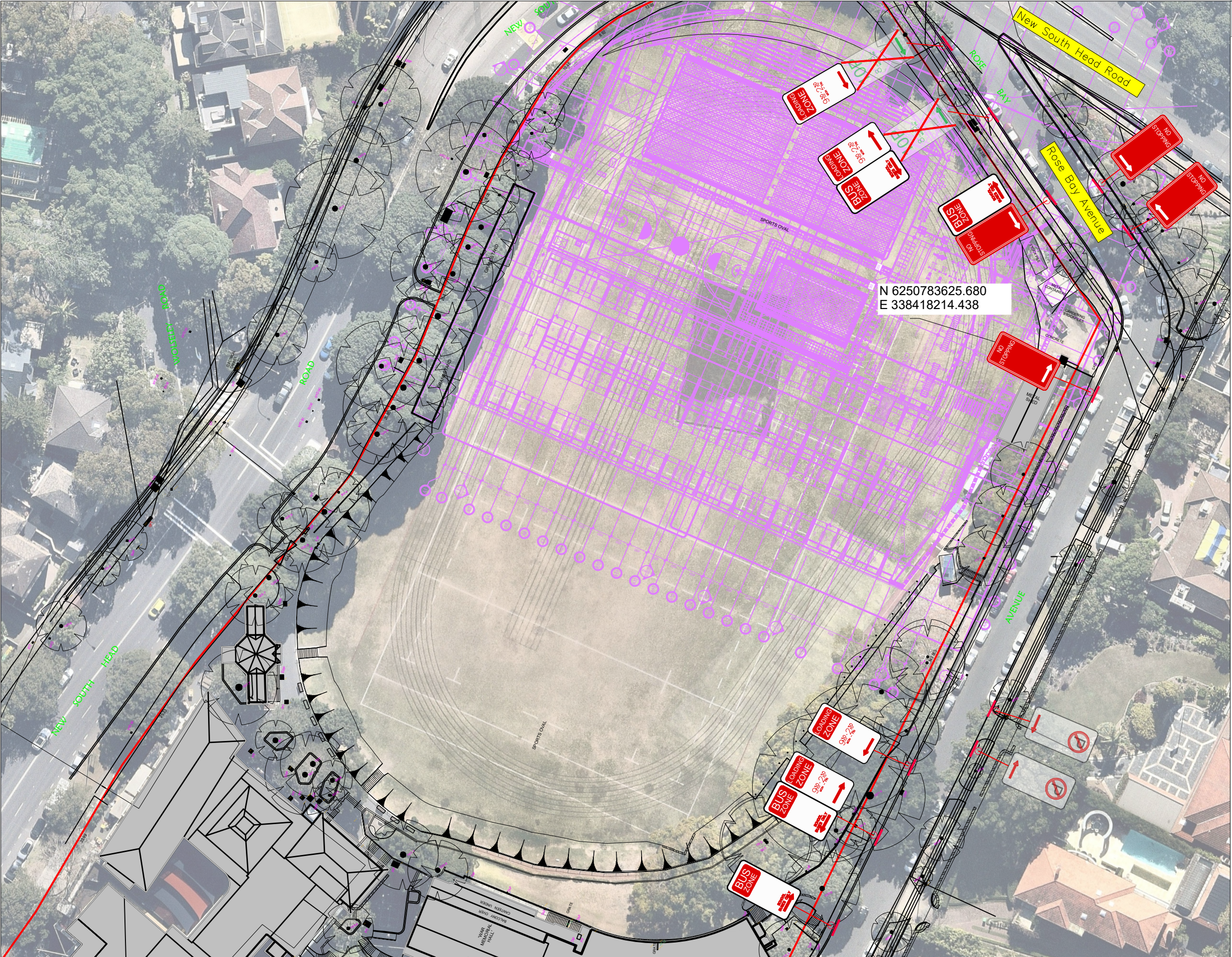
CLIENT: CRANBROOK SCHOOL

DRG. #: PTC-001

PROJECT #: 2288C

SCALE: 1:750

REV: 2



COMMENTS

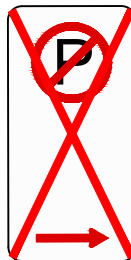
A3



Existing Signage



Proposed Signage



Signage to be removed

- GENERAL NOTES:
1. All dimensions in metres unless stated otherwise.
 2. All pavement markings and signage to be in accordance with RMS Guide to delineation, AS1742 and AS1743.
 3. All road signs to be size A unless stated otherwise.
 4. Exact location of signs to be agreed with on site, prior to installation.

ptc.

Suite 102, 506 Miller Street, Cammeray NSW 2062
t +61 2 8920 0800
ptcconsultants.co

REV	DATE	COMMENT	DRAWN	REVIEWED	REV	DATE	COMMENT	DRAWN	REVIEWED
2	17/12/18	RTS submission	SH	SW					
1	26/11/18	For information	SH	SW					



PROJECT:
CRANBROOK SENIOR SCHOOL

DRAWING TITLE:
Proposed Signage Alterations Sheet 2

CLIENT: CRANBROOK SCHOOL

DRG. #: PTC-001

PROJECT #: 2288C

SCALE: 1:750

REV: 2