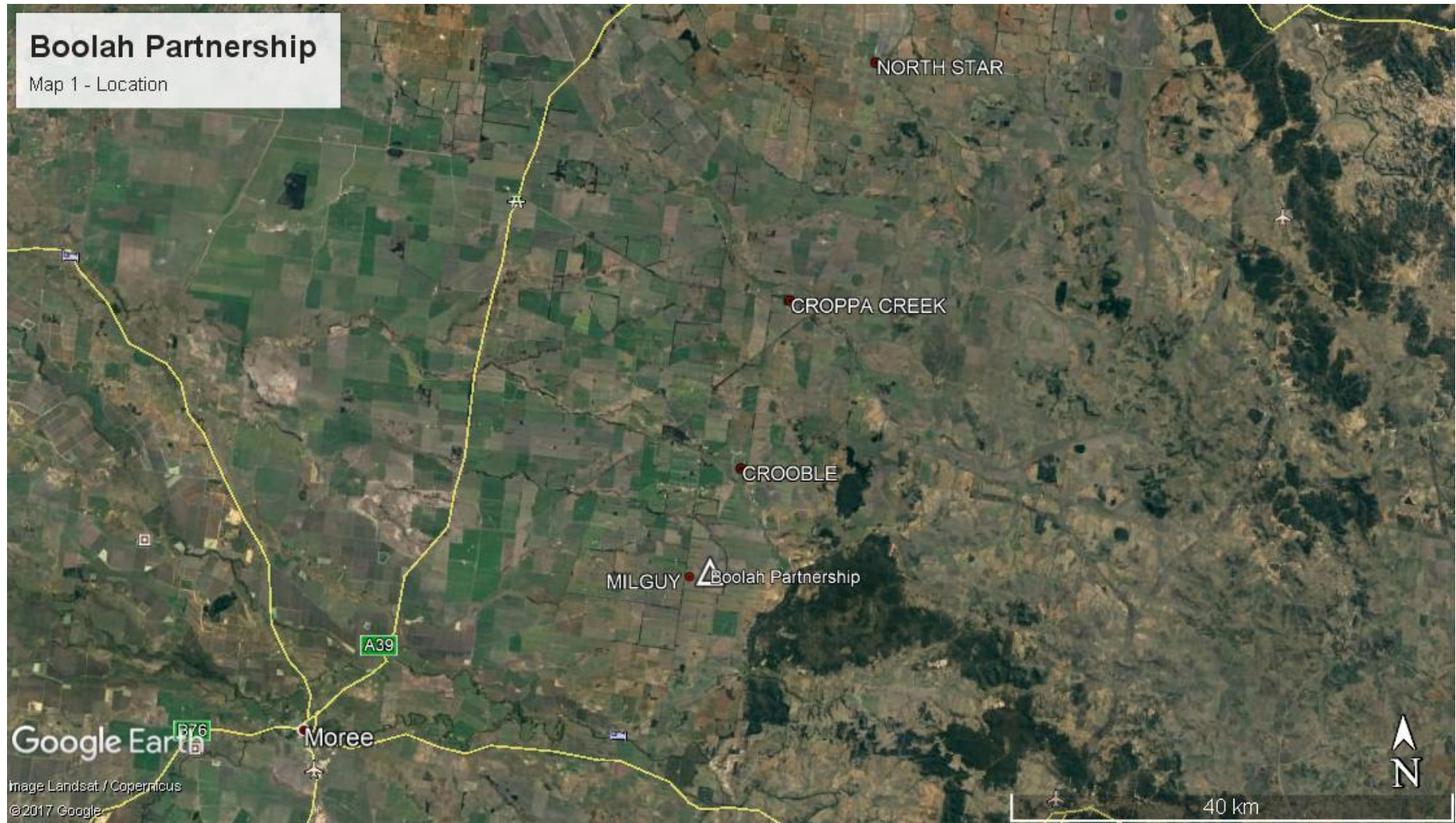


# **Boolah Partnership – Submission on Inland Rail Narrabri to North Star EIS**

## **Maps**

# Boolah Partnership

Map 1 - Location



Google Earth

Image Landsat / Copernicus  
©2017 Google

Moree

NORTH STAR

CROPPA CREEK

CROOBLE

MILGUY Boolah Partnership

A39

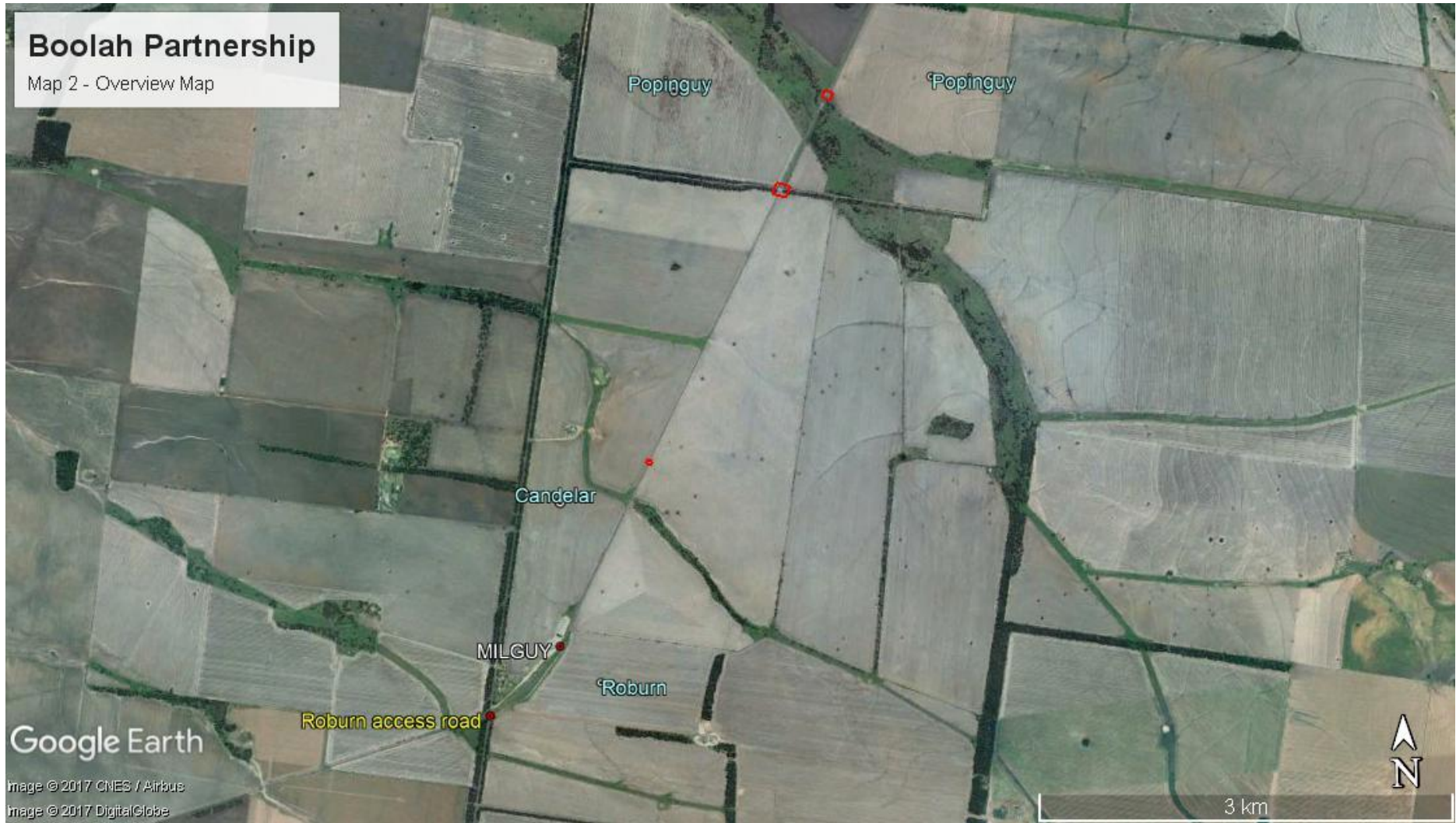
B76



40 km

# Boolah Partnership

Map 2 - Overview Map



Google Earth

Image © 2017 CNES / Airbus

Image © 2017 DigitalGlobe

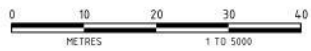
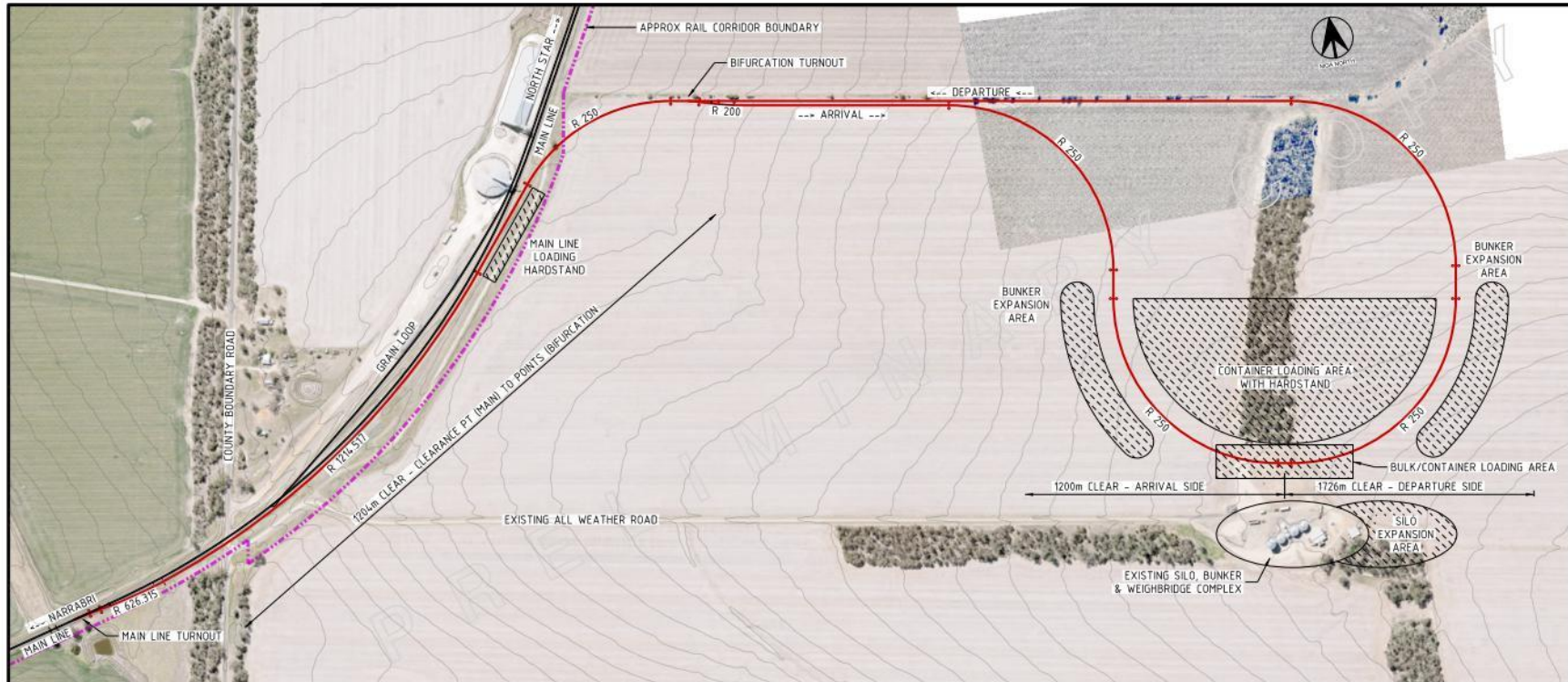


3 km

# Boolah Partnership

Map 3 - Roburn property





1	FOR REVIEW & COMMENT	RDP	11-07-17
REV	DESCRIPTION	BY	DATE

SCALE 1:5000

**R RHOMBERG RAIL AUSTRALIA**

Rhomberg Rail Australia Pty Ltd  
 4th Floor, 71/72 Stirling Street, Perth, Western Australia 6000  
 Tel: +61 8 9723 5800 Fax: +61 8 9723 4700  
 Email: info@rhomberrail.com.au Web: www.rhomberrail.com.au

THIS DRAWING AND THE COPYRIGHT THEREIN IS THE PROPERTY OF RHOMBERG RAIL AUSTRALIA. IT MAY NOT BE COPIED WHOLLY OR IN PART AND IT MAY NOT BE LOANED OR DISCLOSED TO OTHERS WITHOUT THE PRIOR WRITTEN CONSENT OF RHOMBERG RAIL AUSTRALIA. ALL SUCH UNAUTHORIZED COPIES MUST BEAR THIS NOTICE. THIS DRAWING MUST BE RETURNED AS SOON AS THE PURPOSE FOR WHICH IT WAS MADE AVAILABLE HAS BEEN SERVED.

DESIGN	PREPARED BY	CHECKED BY
DRAFTING	R PARSONS	
APPROVED	DATE	

PROJECT	BOOLAH PARTNERSHIP	JOB No	17458
DRAWING TITLE	MILGUY NARRABRI TO NORTH STAR LINE PROPOSED BALLOON LOOP CONCEPT LAYOUT		
STATUS	PRELIMINARY	DWG No	17458-001
REV	1	SIDE	A3

File: P:\132 Projects\01 Tender Submissions\2017\17458 Milguy - Proposed Grain Loading Facility\CADD\DWG\17458-001\MILGUY\_Prop-Loop\_CD-Open.dwg  
 Plotted: 12/07/17 - 1:16:51 PM By: PAB

# Boolah Partnership

Map 5 - Candalar - Roburn private property crossing



# Boolah Partnership

Map 6 - Poppinguy private property crossing

