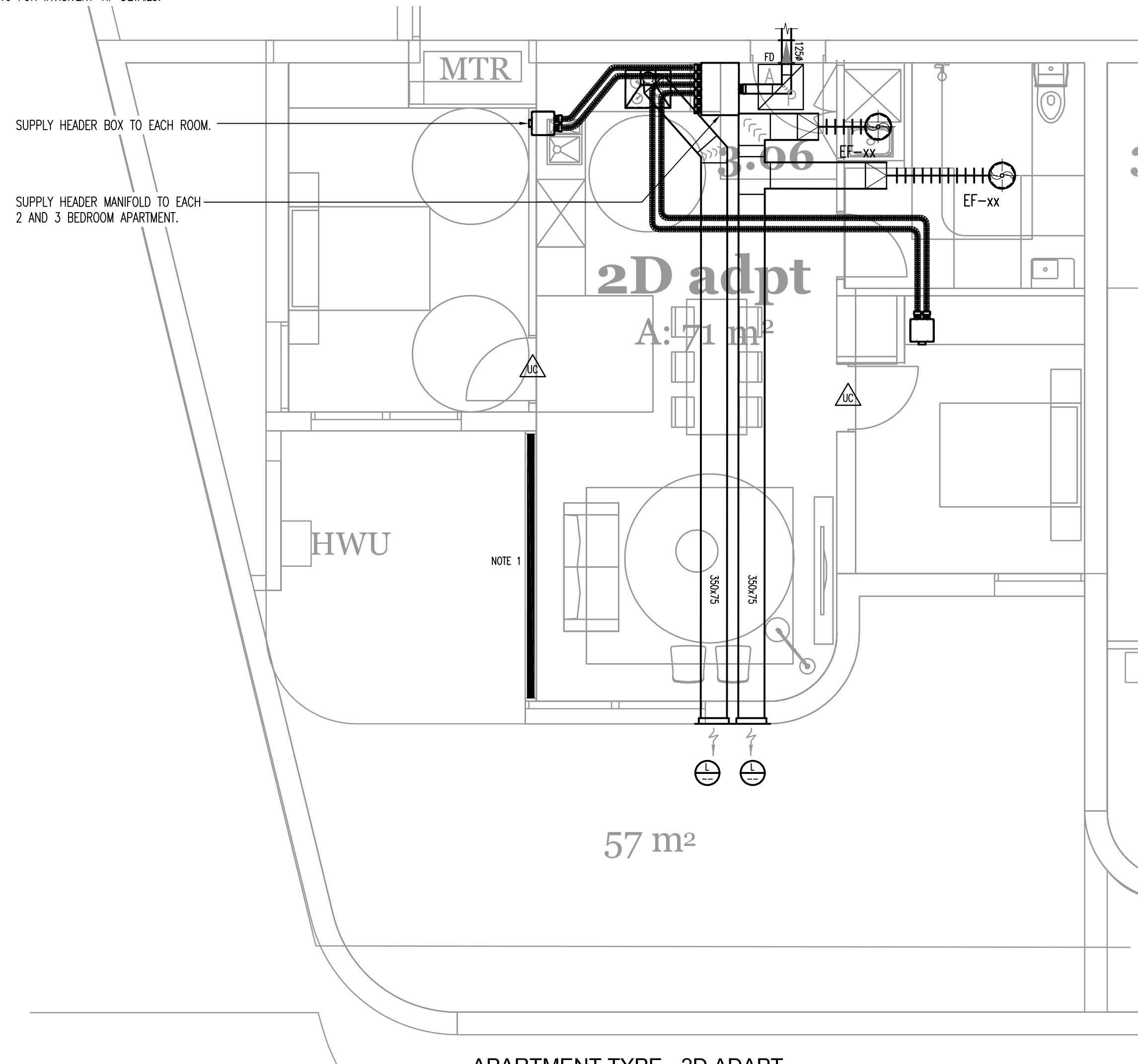
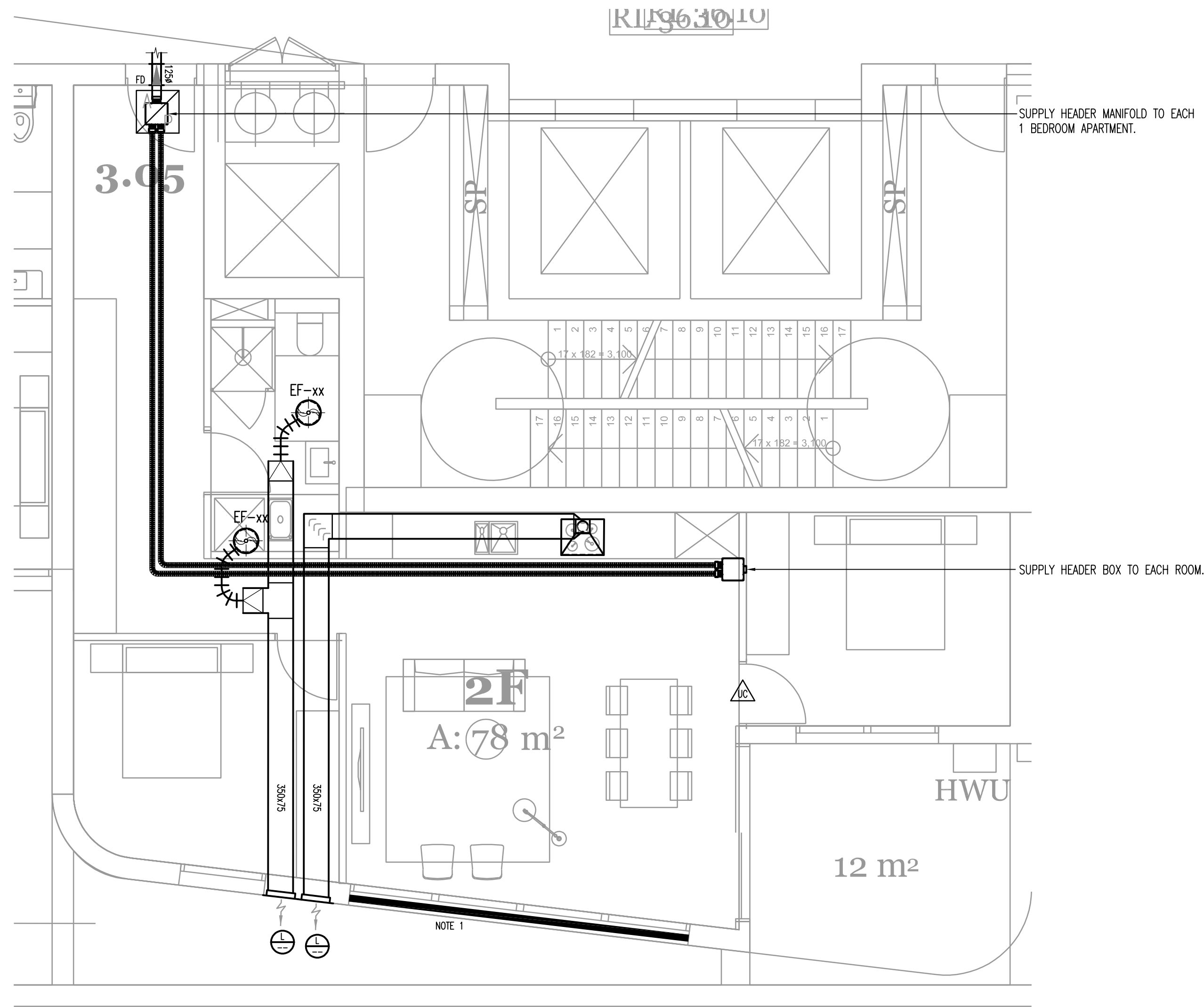


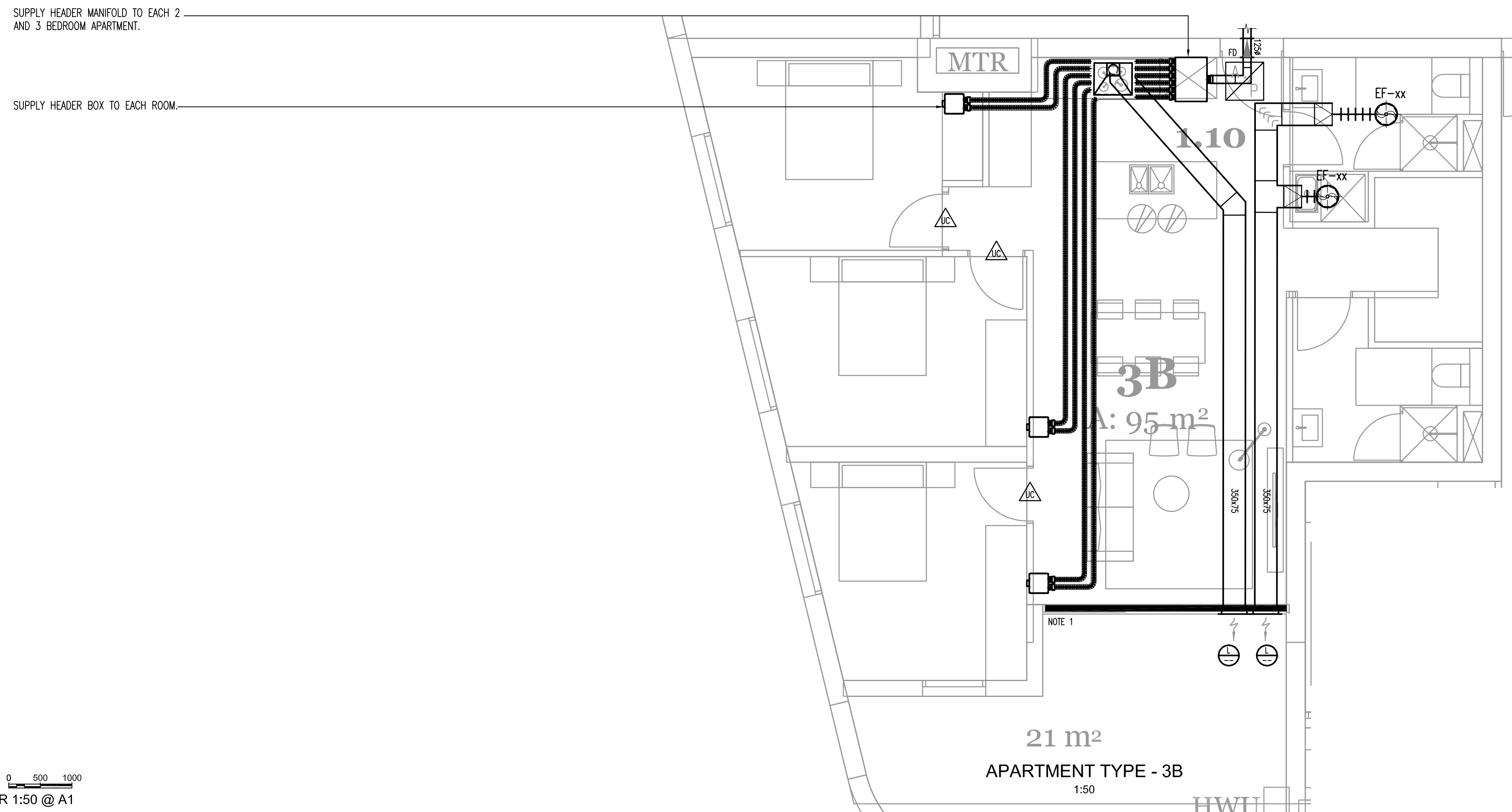
NOTE:  
1. PROPOSED LOCATION FOR INVISIVENT-HF. SEE DRAWING  
NS18138-M10 FOR INVISIVENT-HF DETAILS.



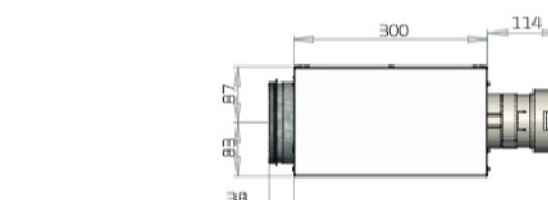
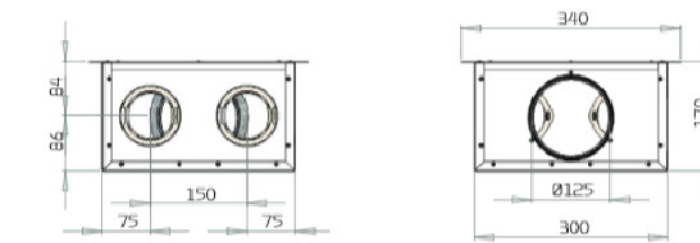
APARTMENT TYPE - 2D ADAPT  
1:50



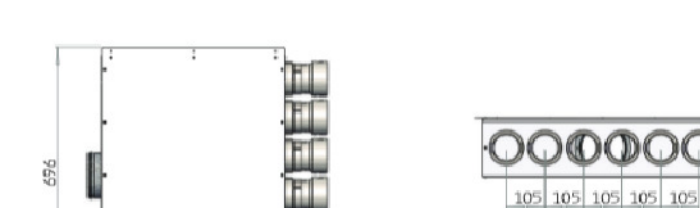
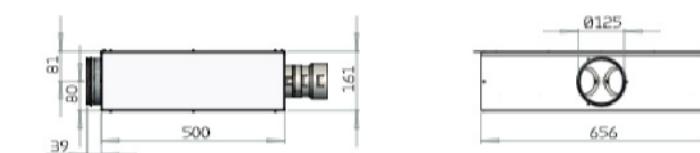
APARTMENT TYPE - 2F  
1:50



APARTMENT TYPE - 3B  
1:50



2 CONNECTIONS - ART No. 8528204  
N.T.S



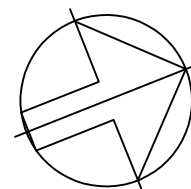
COMBOX 6 CONNECTIONS - ART No. 8528205  
N.T.S



INVISIVENT-HF  
N.T.S

**COPYRIGHT**  
COPYRIGHT OF DESIGNS SHOWN HEREON IS  
RETAINED BY ARROW CONSULTING  
ENGINEERS. AUTHORITY IS REQUIRED FOR  
ANY REPRODUCTION.

REV	ISSUE	DATE
1	PRELIMINARY ISSUE	25/01/19



CLIENT  
SGCH

ARCHITECT

**D K O**

**ARROW**  
CONSULTING  
ENGINEERS

86 REDFERN STREET,  
REDFERN NSW 2016  
PHONE: 02 9318 1431  
E-MAIL: admin@arrowce.com.au

PROJECT  
11 GIBBONS STREET  
REDFERN  
NSW 2016

TITLE  
MECHANICAL SERVICES  
APARTMENT LAYOUT DETAIL  
SHEET 3

DRAWN	DESIGN	CHECK	DWG No.
E.O.	S.C.	S.C.	M09
JOB No.		SCALE	REV
NS18138		1:50@A1	1

0 500 1000  
SCALE BAR 1:50 @ A1