



Mike Whitbread
RES Australia Pty Ltd
Suite 4 Level 1, 760 Pacific Highway
Chatswood NSW 2067

21/02/2019

Ms Elle Donnelley
Senior Planner
Resource & Energy Assessments
Department of Planning & Environment
320 Pitt Street
Sydney, 2001

RE: Avonlie Solar Farm Amended DA (SSD 9031)

Dear Elle

RES Australia Pty Ltd provides notification to the Department of Planning & Environment (DP&E) that the Response to Submissions (RtS) includes a design change. This change is being made to alter the electrical connection for the solar farm.

The Environmental Impact Statement (EIS) design utilised a single connection into the existing TransGrid 132kV overhead line running through the project area. The revised design now features an additional overhead line connection into a second existing 132kV overhead line located a short distance to the north east. This change is being made to provide a more stable connection with lower constraint and outage risk. This change has been made following consultation with TransGrid who own and operate both existing 132kV overhead lines.

The revised design is substantially the same as that detailed in the EIS with the main changes made within the original EIS site area. The main changes are:

- Movement of the substation, transformer and utility area, battery storage facility and construction compound area 1 approximately 0.6km north. This is to site the substation between the two existing 132kV overhead lines. All moved infrastructure remains within the original development footprint.
- Additional 132kV overhead line (around 0.6km) to connect the revised substation location into the existing 132kV overhead line running through the project area. This change is within the original development footprint.
- Additional 132kV overhead line (around 1.2km) to connect into the second existing 132kV overhead line. This change is outside the original development footprint. The additional

area required for this overhead line easement has been assessed, with additional updated assessments included in the RtS. The Development Boundary has been modified to include this additional overhead line easement by inclusion of Lot 7DP254595, Lot 28 DP754538, Lot 13 DP795880 and Lot 1 DP386927.

Two drawings are attached, one showing the EIS layout (drawing number 03819D1001-02) and one showing the amended DA RtS layout (drawing number 03819D1001-04).

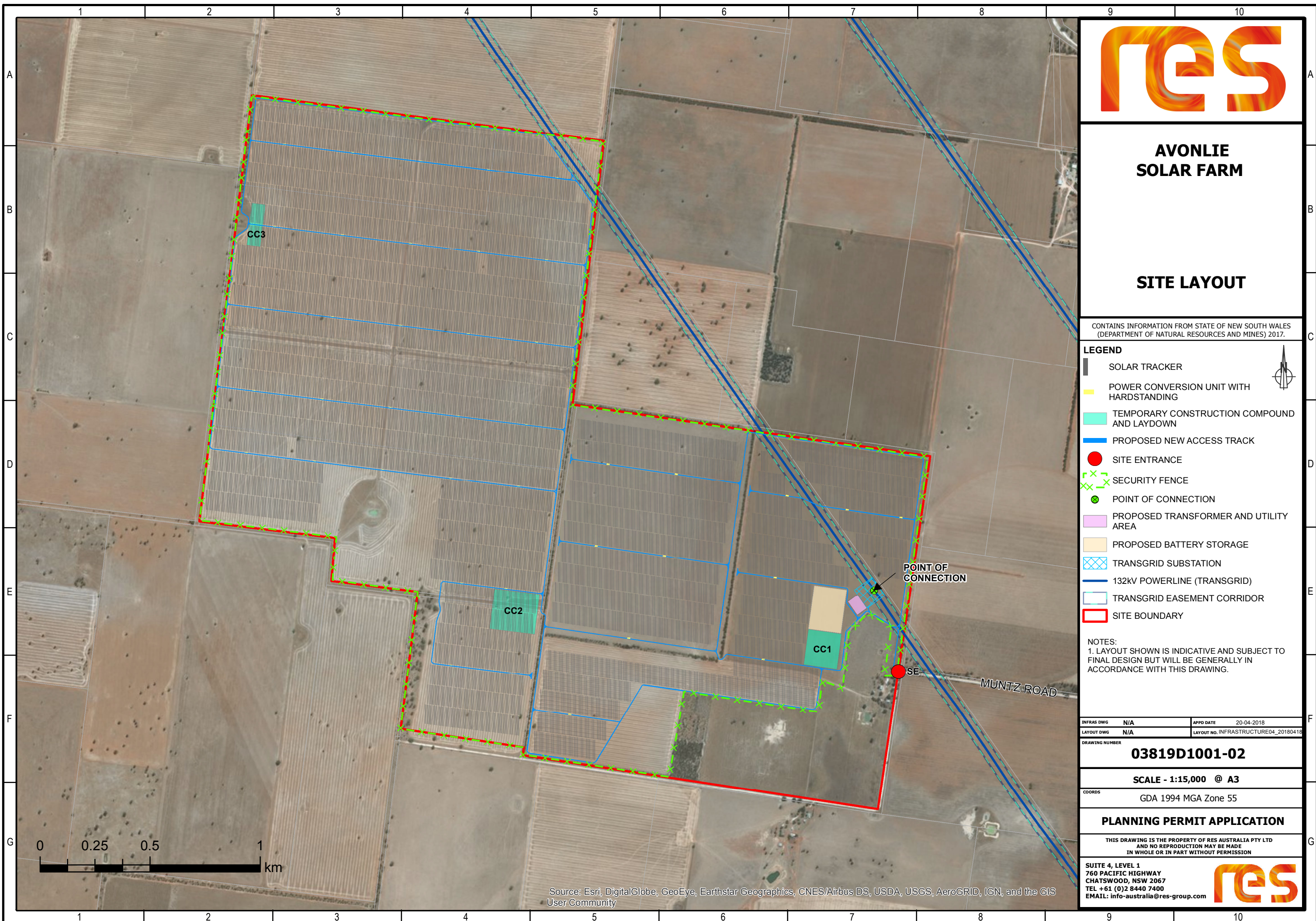
Please contact me should you have any queries in relation to this change.

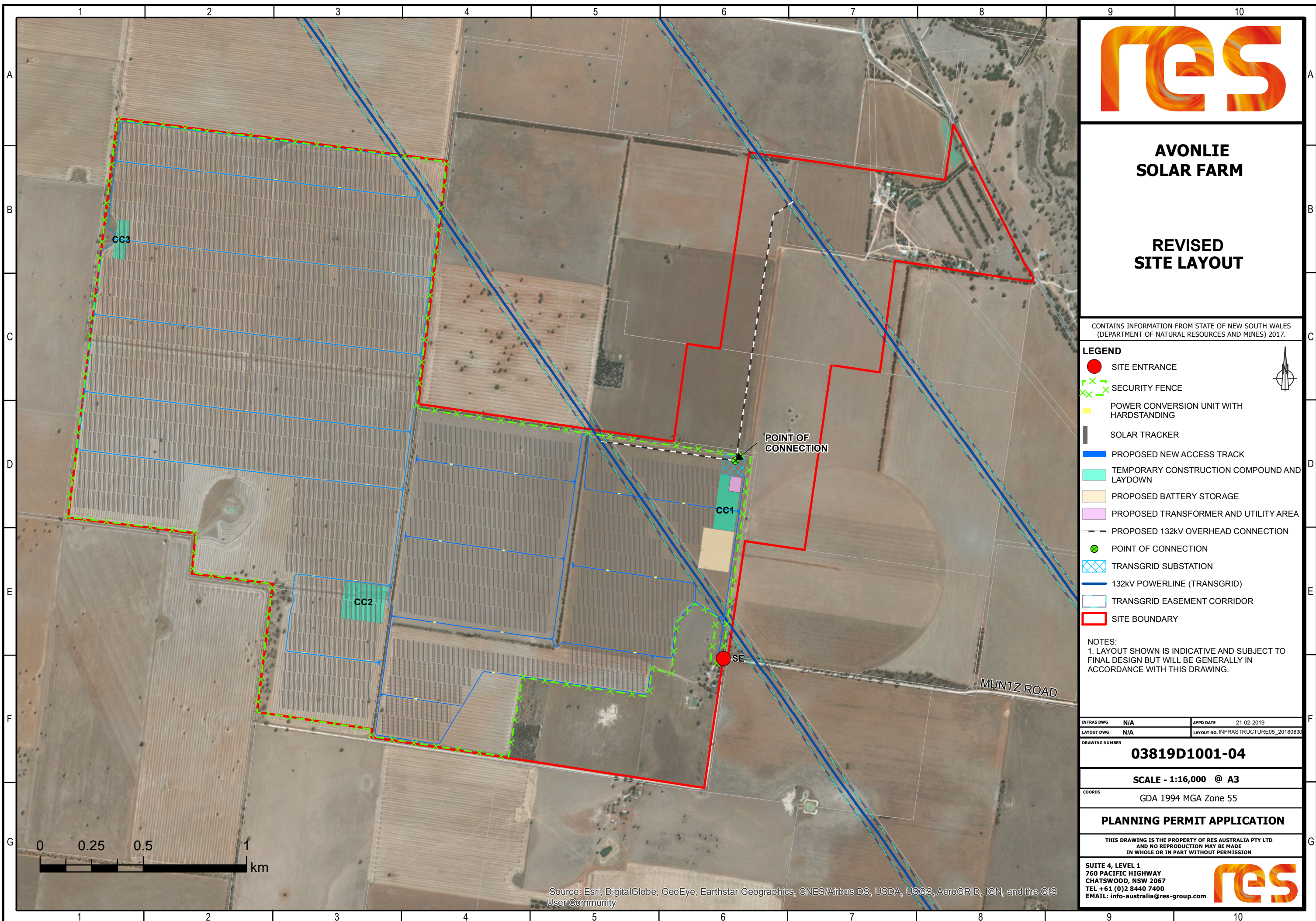
Yours Sincerely,

A handwritten signature in black ink, appearing to read 'Mike Whitbread'. The signature is fluid and stylized, with a long horizontal stroke at the end.

Mike Whitbread

Solar Development Team Manager





AVONLIE SOLAR FARM

REVISED SITE LAYOUT

CONTAINS INFORMATION FROM STATE OF NEW SOUTH WALES
(DEPARTMENT OF NATURAL RESOURCES AND MINES) 2017.

LEGEND

- SITE ENTRANCE
- SECURITY FENCE
- POWER CONVERSION UNIT WITH HARDSTANDING
- SOLAR TRACKER
- PROPOSED NEW ACCESS TRACK
- TEMPORARY CONSTRUCTION COMPOUND AND LAYDOWN
- PROPOSED BATTERY STORAGE
- PROPOSED TRANSFORMER AND UTILITY AREA
- PROPOSED 132kV OVERHEAD CONNECTION
- POINT OF CONNECTION
- TRANSGRID SUBSTATION
- 132kV POWERLINE (TRANSGRID)
- TRANSGRID EASEMENT CORRIDOR
- SITE BOUNDARY

NOTES:
1. LAYOUT SHOWN IS INDICATIVE AND SUBJECT TO FINAL DESIGN BUT WILL BE GENERALLY IN ACCORDANCE WITH THIS DRAWING.

INFRAS DWG	N/A	APPD DATE	21-02-2019
LAYOUT DWG	N/A	LAYOUT NO.	INFRASTRUCTURE05_20180830

DRAWING NUMBER
03819D1001-04

SCALE - 1:16,000 @ A3

COORDS
GDA 1994 MGA Zone 55

PLANNING PERMIT APPLICATION

THIS DRAWING IS THE PROPERTY OF RES AUSTRALIA PTY LTD
AND NO REPRODUCTION MAY BE MADE
IN WHOLE OR IN PART WITHOUT PERMISSION

SUITE 4, LEVEL 1
760 PACIFIC HIGHWAY
CHATSWOOD, NSW 2067
TEL +61 (0)2 8440 7400
EMAIL: info-australia@res-group.com



Source: Esri, DigitalGlobe, GeoEye, Earthstar Geographics, CNES/Airbus DS, USDA, USGS, AeroGRID, IGN, and the GIS User Community