



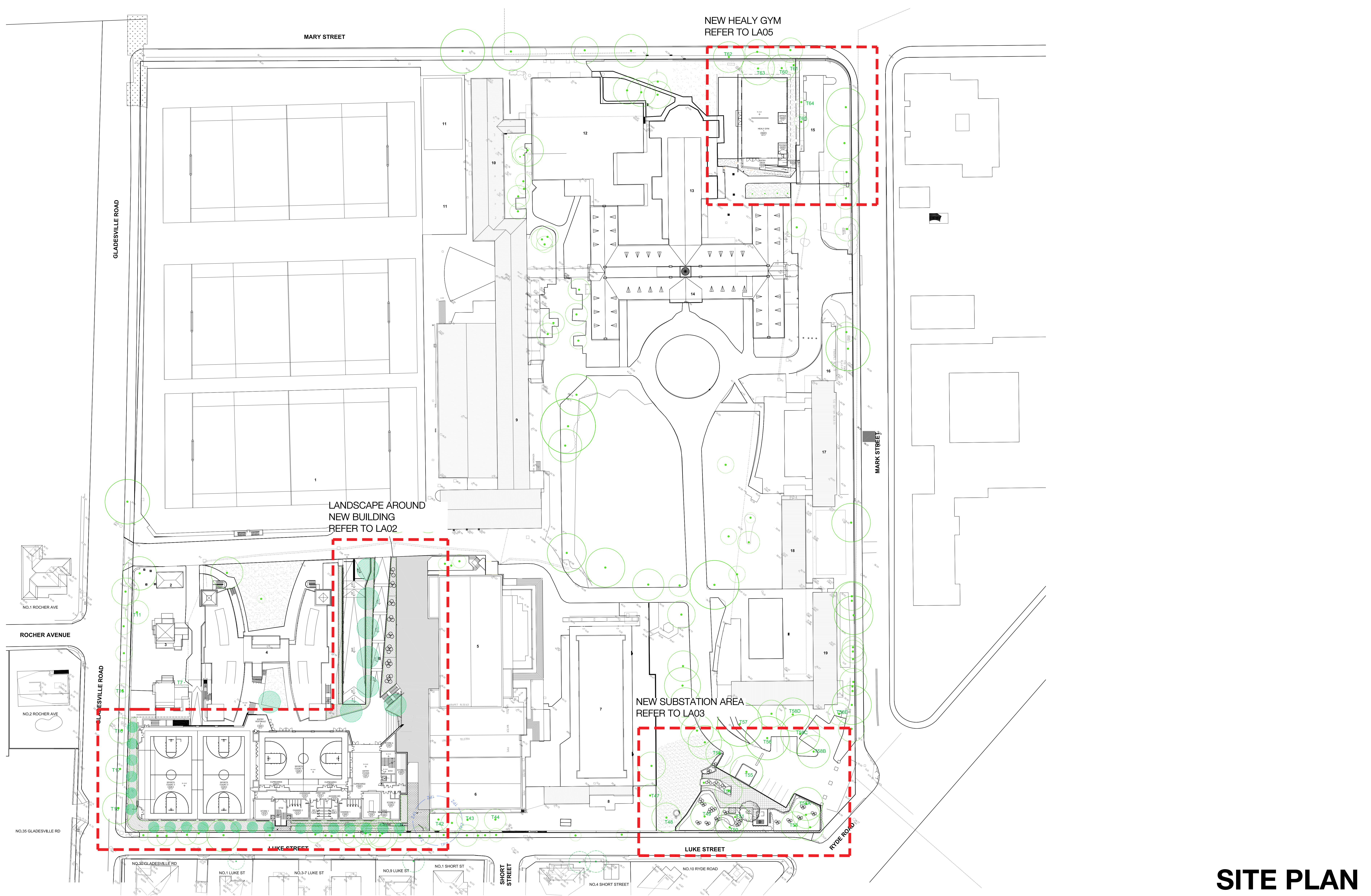
ST JOSEPH'S COLLEGE PHYSICAL EDUCATION AND SPORTS PRECINCT PROJECT

LANDSCAPE STRATEGY

project: St Joseph's College
client: St Joseph's College
date: 05.04.2019
revision: A
drawn: DA
checked: MT

TaylorBrammer

TAYLOR BRAMMER LANDSCAPE ARCHITECTS PTY LTD
SYDNEY STUDIO
218 Oxford Street Woolahra, NSW, 2025 E: sydney@taylorbrammer.com.au T: 61 2 9387 8855
Copyright of Taylor Brammer Landscape Architects Pty Ltd. ABN 61 008 724 988



SITE PLAN

project: St Joseph's College
client: St Joseph's College
date: 24.04.2019
revision: A
drawn: DA
checked: MT

TaylorBrammer
TAYLOR BRAMMER LANDSCAPE ARCHITECTS PTY LTD
SYDNEY STUDIO
218 Oxford Street Woollahra, NSW, 2025 E sydney@taylorbrammer.com.au T 61 2 9387 8855
Copyright of Taylor Brammer Landscape Architects Pty Ltd. ASDN 01 095 724 895

GLADESVILLE ROAD

GLADESVILLE ROAD

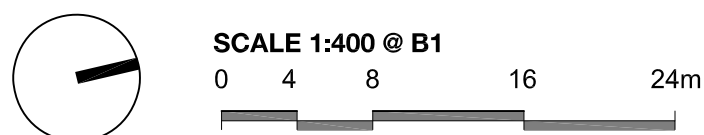
MARK STREET

LUKE STREET

LUKE STREET

RYDE ROAD

SHORT TREET



LEGEND

- SITE BOUNDARY
- EXISTING TREE
- EXISTING TREE REMOVED
- EXISTING TREE RETAINED

EXISTING VEGETATION SCHEDULE

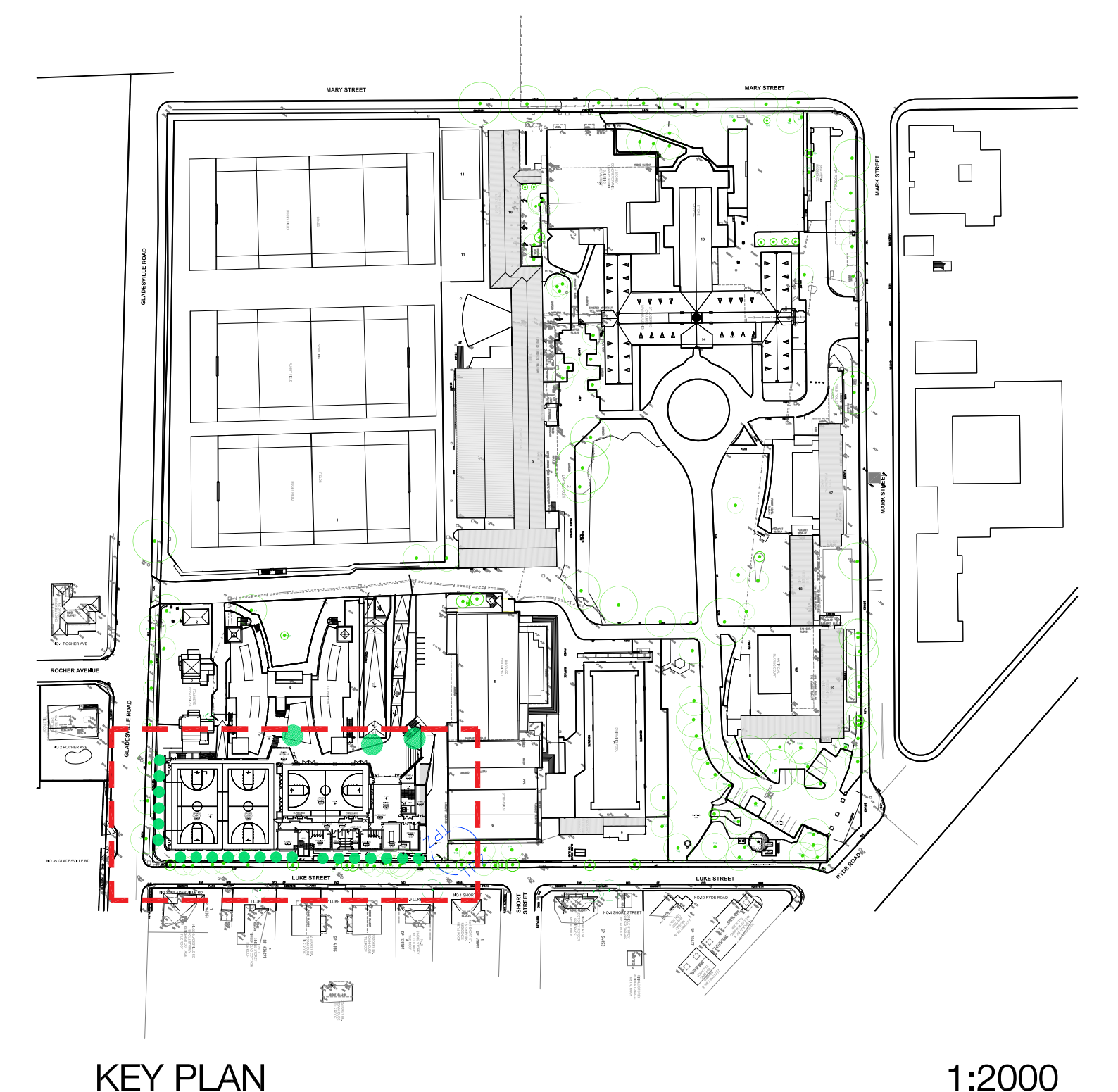
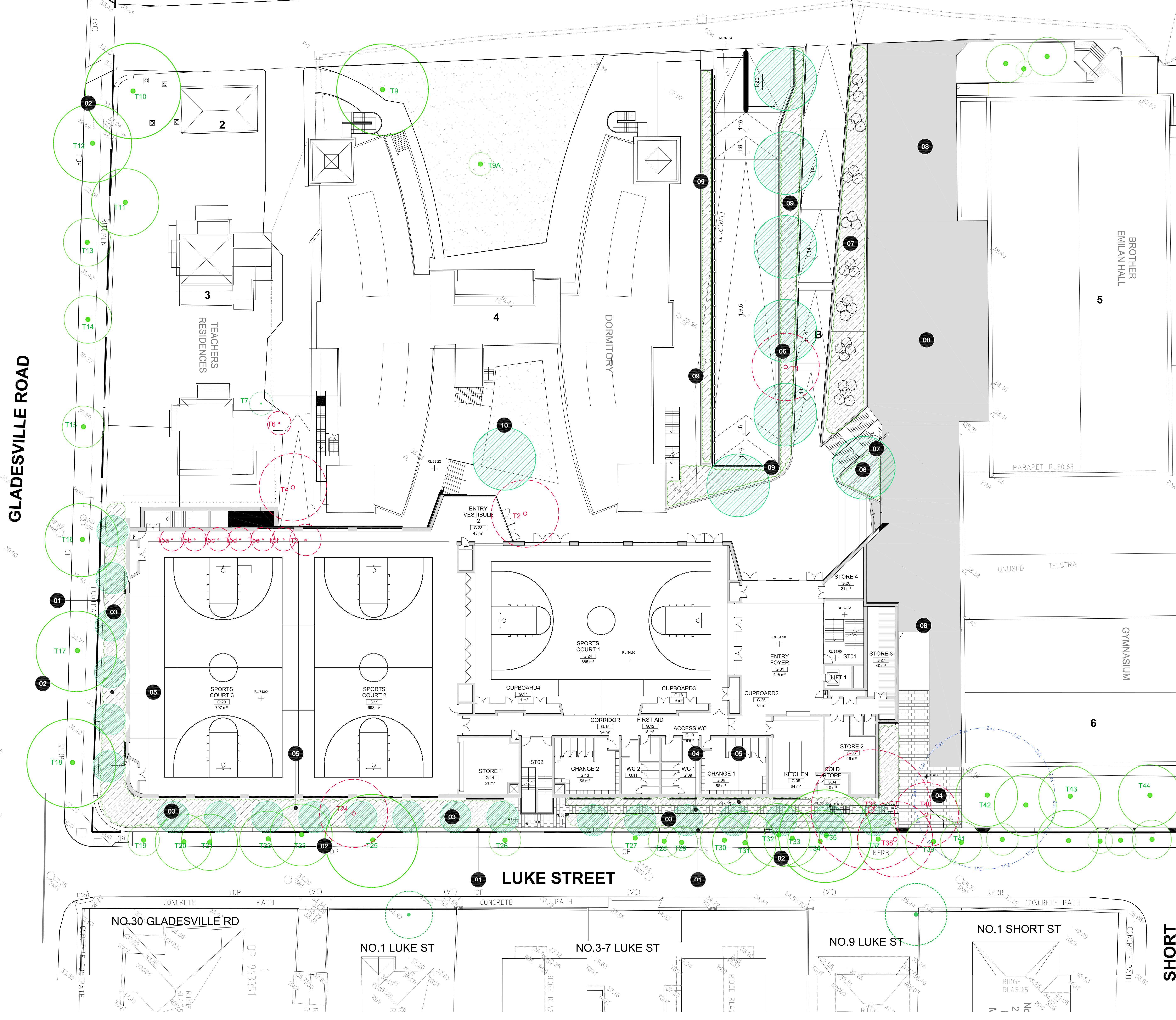
EXISTING VEGETATION SCHEDULE

* Refer to Arboricultural Risk Assessment and Maintenance Report prepared by Glenys Laws Consulting Arborist

ID	BOTANICAL NAME	COMMON NAME
T1	<i>Chamaecyparis</i> sp.	False cypress
T2	<i>Ulmus parvifolia</i>	Chinese Elm
T3	<i>Hymenosporum flavum</i>	Native Frangipani
T4	<i>Robinia pseudoacacia</i> 'Frisia'	Golden Robinia
T5a	<i>Hymenosporum flavum</i>	Native Frangipani
T5b	<i>Hymenosporum flavum</i>	Native Frangipani
T5c	<i>Hymenosporum flavum</i>	Native Frangipani
T5d	<i>Hymenosporum flavum</i>	Native Frangipani
T5e	<i>Hymenosporum flavum</i>	Native Frangipani
T5f	<i>Hymenosporum flavum</i>	Native Frangipani
T6	<i>Pyrus calleryana</i>	Ornamental Pear
T7	<i>Pyrus calleryana</i>	Ornamental Pear
T8	Recently removed	
T9	<i>Eucalyptus globulus</i>	Southern Blue Gum
T9a	<i>Flindersia australis</i>	Australian Teak
T10	<i>Lophostemon confertus</i>	Brushbox
T11	<i>Brachychiton populneus</i>	Kurrajong
T12	<i>Lophostemon confertus</i>	Brushbox
T13	<i>Lophostemon confertus</i>	Brushbox
T14	<i>Lophostemon confertus</i>	Brushbox
T15	<i>Lophostemon confertus</i>	Brushbox
T16	<i>Lophostemon confertus</i>	Brushbox
T17	<i>Lophostemon confertus</i>	Brushbox
T18	<i>Lophostemon confertus</i>	Brushbox
T19	<i>Lophostemon confertus</i>	Brushbox
T20	<i>Callistemon viminalis</i>	Weeping Bottlebrush
T21	<i>Callistemon viminalis</i>	Weeping Bottlebrush
T22	<i>Jacaranda mimosifolia</i>	Jacaranda
T23	<i>Camellia sasanqua</i>	Camellia
T24	<i>Lophostemon confertus</i>	Brushbox
T25	<i>Ficus benjamina</i>	Weeping Fig
T26	<i>Camellia sasanqua</i>	Camellia
T27	<i>Agonis flexuosa</i>	WA Weeping Myrtle
T28	<i>Syzygium</i> sp.	Lilly Pilly
T29	<i>Syzygium</i> sp.	Lilly Pilly
T29a	<i>Syzygium</i> sp.	Lilly Pilly
T30	<i>Callistemon viminalis</i>	Weeping Bottlebrush
T31	<i>Callistemon viminalis</i>	Weeping Bottlebrush
T32	<i>Hymenosporum flavum</i>	Native Frangipani
T33	<i>Melaleuca quinquenervia</i>	Broad-leaved Paperbark
T34	<i>Melaleuca quinquenervia</i>	Broad-leaved Paperbark
T35	<i>Ficus benjamina</i>	Weeping Fig
T36	<i>Lophostemon confertus</i>	Brushbox
T37	<i>Viburnum odoratissimum</i>	Sweet Viburnum
T38	<i>Sapium sebiferum</i>	Chinese Tallow
T39	<i>Sapium sebiferum</i>	Chinese Tallow
T40	<i>Araucaria heterophylla</i>	Norfolk Island Pine
T41	<i>Viburnum odoratissimum</i>	Sweet Viburnum
T42	<i>Lophostemon confertus</i>	Brushbox
T43	<i>Lophostemon confertus</i>	Brushbox
T44	<i>Lophostemon confertus</i>	Brushbox
T45	<i>Castanopernum australe</i>	Blackbean
T46	<i>Taxodium distichum</i>	Bald Cypress
T47	<i>Lophostemon confertus</i>	Brushbox
T48	<i>Lophostemon confertus</i>	Brushbox
T49	<i>Lophostemon confertus</i>	Brushbox
T50	<i>Lophostemon confertus</i>	Brushbox
T51	<i>Lophostemon confertus</i>	Brushbox
T52	Recently removed	
T53	<i>Lophostemon confertus</i>	Brushbox
T54	<i>Lophostemon confertus</i>	Brushbox
T55	<i>Lophostemon confertus</i>	Brushbox
T56	<i>Lophostemon confertus</i>	Brushbox
T57	<i>Lophostemon confertus</i>	Brushbox
T58	<i>Lophostemon confertus</i>	Brushbox
T58A	<i>Lophostemon confertus</i>	Brushbox
T58B	<i>Lophostemon confertus</i>	Brushbox
T58C	<i>Eucalyptus microcorys</i>	Tallowwood
T58D	<i>Liquidambar styraciflua</i>	Liquidambar
T58E	<i>African Yellowwood</i>	Afrocarpus falcatus
T59	<i>Phoenix canariensis</i>	Canary Island date palm
T60	<i>Araucaria cunninghamii</i>	Hoop pine
T61	<i>Macadamia</i>	Macadamia tetraphylla
T62	<i>Lophostemon confertus</i>	Brushbox
T63	<i>Flindersia australis</i>	Australian Teak
T64	<i>Fraxinus excelsior</i>	Ash
T65	<i>Fraxinus excelsior</i>	Ash

project: St Joseph's College
client: St Joseph's College
date: 24.04.2019
revision: A
drawn: DA
checked: MT

TaylorBrammer
TAYLOR BRAMMER LANDSCAPE ARCHITECTS PTY LTD
SYDNEY STUDIO
218 Oxford Street Woolahra, NSW, 2025 E sydney@taylorbrammer.com.au T 61 2 9387 8855
Copyright © Taylor Brammer Landscape Architects Pty Ltd. ABN 61 095 724 885



DESIGN NOTES

- 01 EXISTING SANDSTONE WALL RETAINED
- 02 EXISTING TREES RETAINED
- 03 PROPOSED REPLACEMENT TREES TO LANDSCAPE BUFFER ZONE
21 x Backhousia citriflora (Lemon myrtle)
- 04 PERMEABLE PAVING TO EGRESS PATHWAY
- 05 LOW- LEVEL PLANTING VIEWED FROM MAINTENANCE AND SPORTS COURTS 2 AND 3
- 06 PROPOSED REPLACEMENT TREES
7 x Flindersia australis
- 07 TEXTURAL PLANTING UNDER ALONG PEDESTRIAN WALK
- 08 ASPHALT AND PAVING FOR VEHICLES AND PEDESTRIANS
- 09 LOW SHRUBS TO SCREEN DRIVEWAY RAMP
- 10 NEW Hymenosporum flavum (Native frangipani) IN TURF

PLANT SCHEDULE

ID	BOTANICAL NAME	COMMON NAME	HEIGHT (m)	SIZE	QTY
TREES					
Ba-cl	Backhousia citriflora	Lemon myrtle	10-14m	100L	21
Fl-au	Flindersia australis	Australian teak	20m	100L	7
Hy-fl	Hymenosporum flavum	Native frangipani	15m	100L	1

LANDSCAPE TO NEW SPORT HALL

SCALE 1:200 @ B1
0 2 4 8 12m

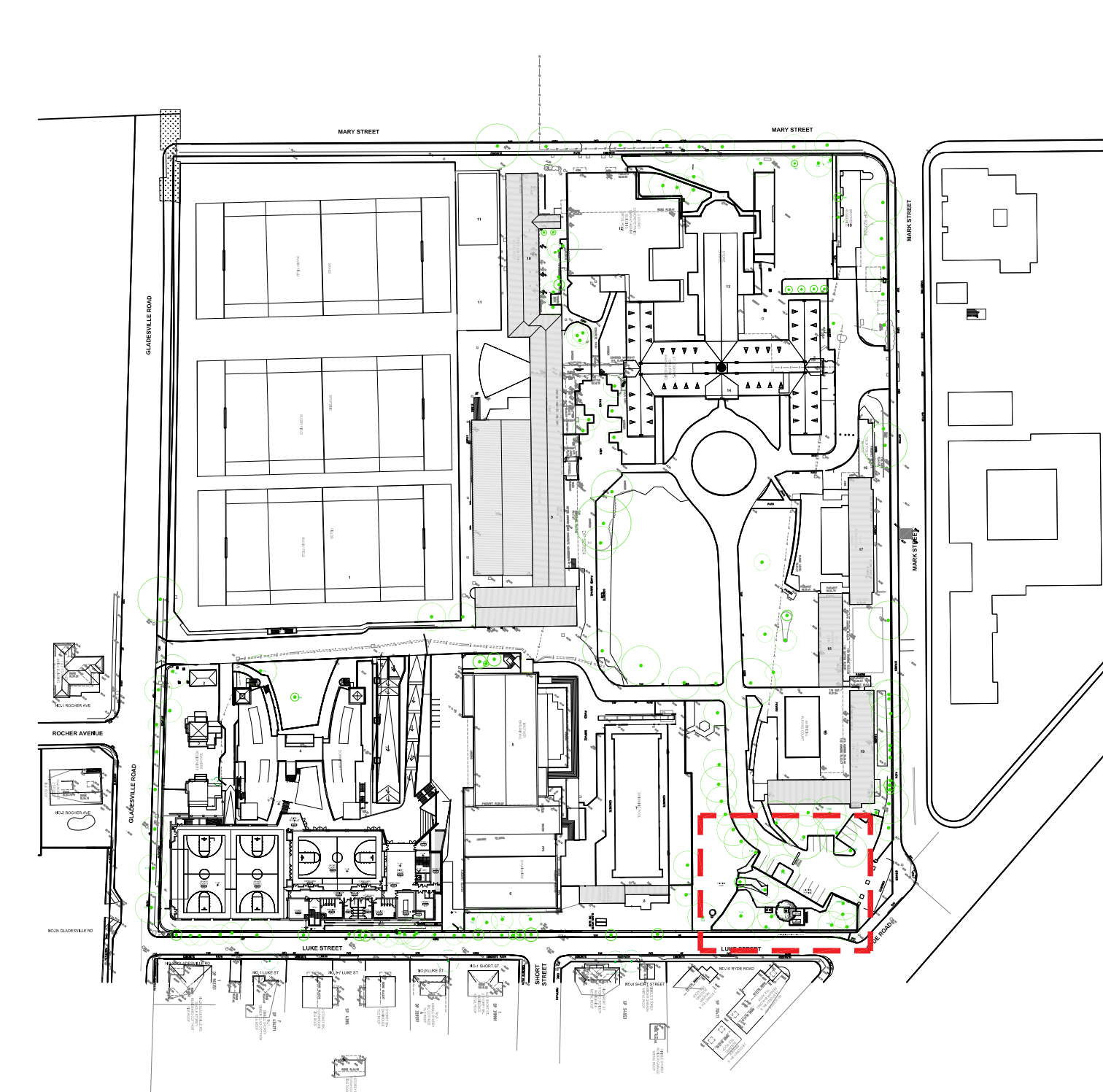
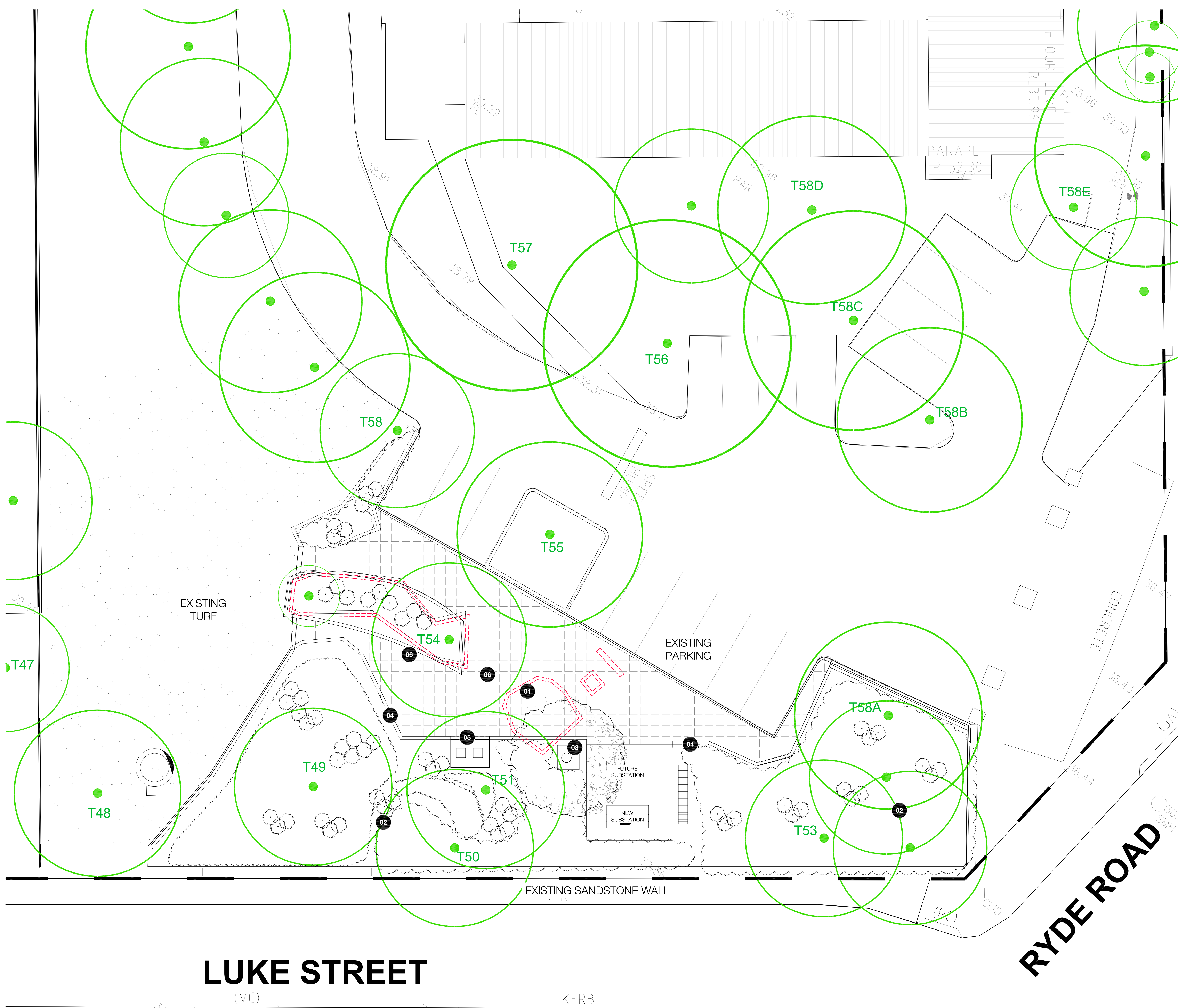
LEGEND

- SITE BOUNDARY
- EXISTING TREE REMOVED
- PROPOSED REPLACEMENT TREES
- EXISTING CONTOUR
- PROPOSED NEW CONTOUR
- EXISTING SPOT LEVEL
- PROPOSED SPOT LEVEL
- PROPOSED GROUNDCOVERS
- PROPOSED SHRUBS
- PERMEABLE PAVING
- TURF
- ASPHALT PAVING TO ARCHITECT'S DETAILS

project: St Joseph's College
client: St Joseph's College
date: 24.04.2019
revision: A
drawn: DA
checked: MT

TaylorBrammer
TAYLOR BRAMMER LANDSCAPE ARCHITECTS PTY LTD
SYDNEY STUDIO
218 Oxford Street, Sydney, NSW, 2000
Copyright © Taylor Brammer Landscape Architects Pty Ltd.

03



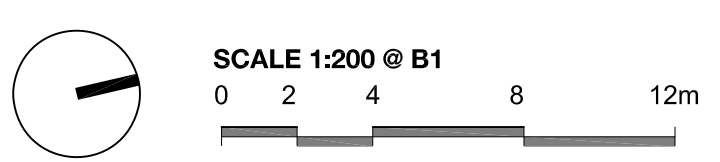
DESIGN NOTES

- 01 EXISTING STEPS DEMOLISHED
- 02 EXISTING TREES RETAINED
- 03 Gallipoli Lone Pine AND MEMORIAL STONE RELOCATED
- 04 500mm HIGH SEATING SANDSTONE WALL
- 05 RELOCATED RUBBISH BINS
- 06 EXISTING PAVING TO BE RELAI

LUKE STREET

RYDE ROAD

NEW SUBSTATION



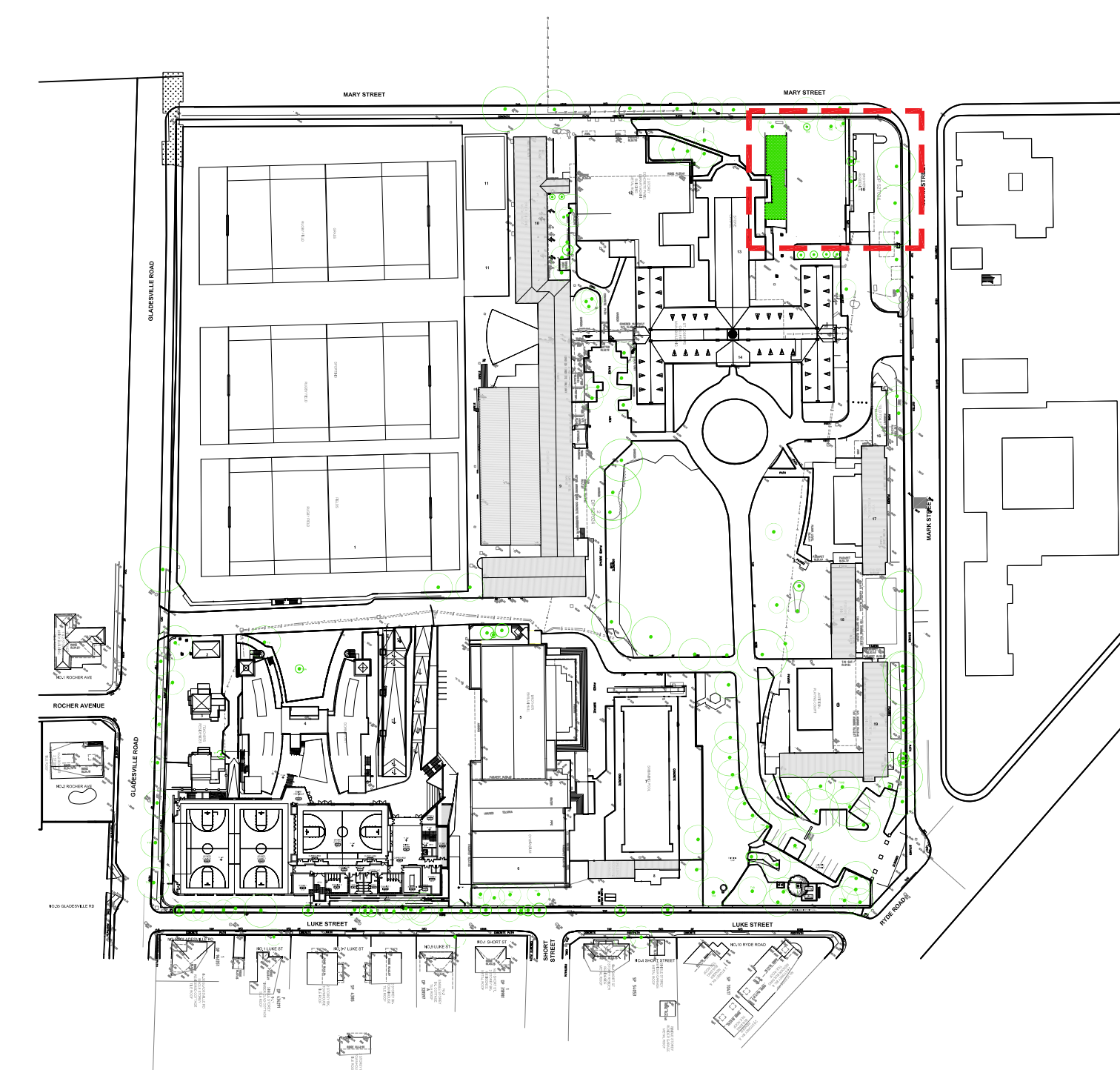
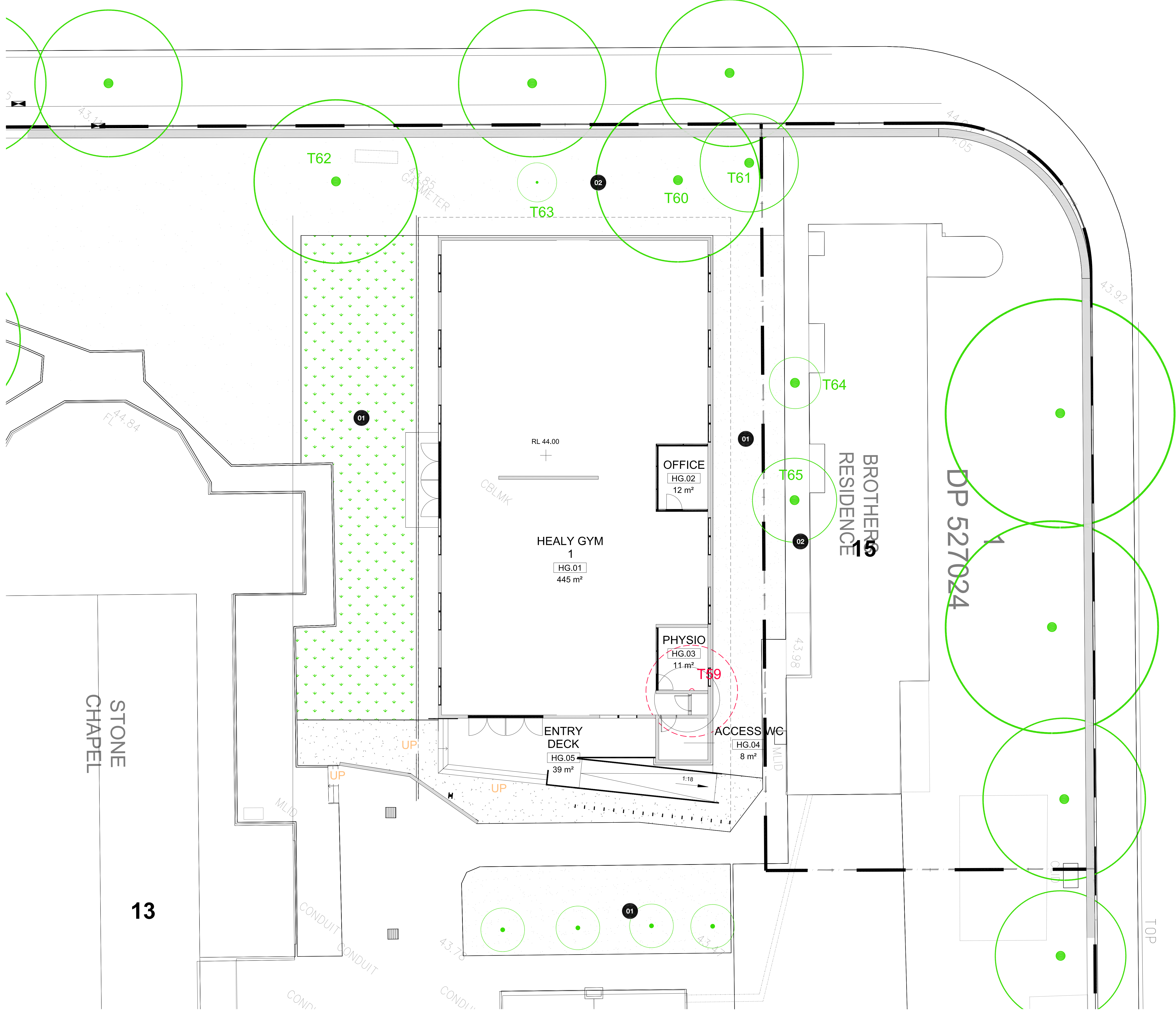
LEGEND

- SITE BOUNDARY
- EXISTING TREE REMOVED
- EXISTING TREE RETAINED
- EXISTING CONTOUR
- PROPOSED NEW CONTOUR
- EXISTING SPOT LEVEL
- PROPOSED SPOT LEVEL
- PROPOSED GROUNDCOVERS
- PROPOSED SHRUBS
- TURF
- EXISTING PAVING TO BE RELAI
- NEW MAIN SWITCHBOARD

project: St Joseph's College
 client: St Joseph's College
 date: 24.04.2019
 revision: A
 drawn: DA
 checked: MT

TaylorBrammer
 TAYLOR BRAMMER LANDSCAPE ARCHITECTS PTY LTD
 SYDNEY STUDIO
 218 Oxford Street Woollahra, NSW, 2025 E sydney@taylorbrammer.com.au T 61 2 9387 8855
 Copyright © Taylor Brammer Landscape Architects Pty Ltd. ASDN 01/09/2018 005

MARY STREET



KEY PLAN 1:2000

DESIGN NOTES

- 01 TURF TO PERIPHERY OF GYM
- 02 EXISTING TREES RETAINED

MARK STREET

PROPOSED HEALY GYM