

Stephen O'Hora

From: Michael Lee <Michael.Lee@tttp.net.au>
Sent: Wednesday, 2 October 2019 2:48 PM
To: Stephen O'Hora
Cc: Vinay Moorthy; Brian Mariotti
Subject: RE: 18029 Wee Hur Gibbon St: Final Drawings for update of report
Attachments: 18077CAD007-SWEPT PATH-191002.dwg; 18077CAD007-SWEPT PATH-191002.pdf
Categories: 18029 Weehur Gibbons St

Hi Stephen,

Please find attached our swept path diagrams as requested. Generally there are no issues with the vehicle swept paths as shown. However, we do have some questions/clarifications:

- ensure the 800mm drain along the eastern boundary can take the load from a 12.5m long truck, and
- canopy for public artwork to have minimum vertical clearance of 4.5m to permit service vehicles pass under it.

Any questions, please call me.

Regards,

Michael Lee

Director

p: +61 2 8437 7823 **m:** +61 403 107 146

a: Suite 402, 22 Atchison Street, St Leonards NSW 2065

w: www.tttp.net.au **e:** Michael.Lee@tttp.net.au



From: Stephen O'Hora <stephen.ohora@architectsajc.com>
Sent: Wednesday, 2 October 2019 12:08 PM
To: Michael Lee <Michael.Lee@tttp.net.au>
Cc: Vinay Moorthy <Vinay.Moorthy@architectsajc.com>; Brian Mariotti <Brian.Mariotti@architectsajc.com>
Subject: RE: 18029 Wee Hur Gibbon St: Final Drawings for update of report

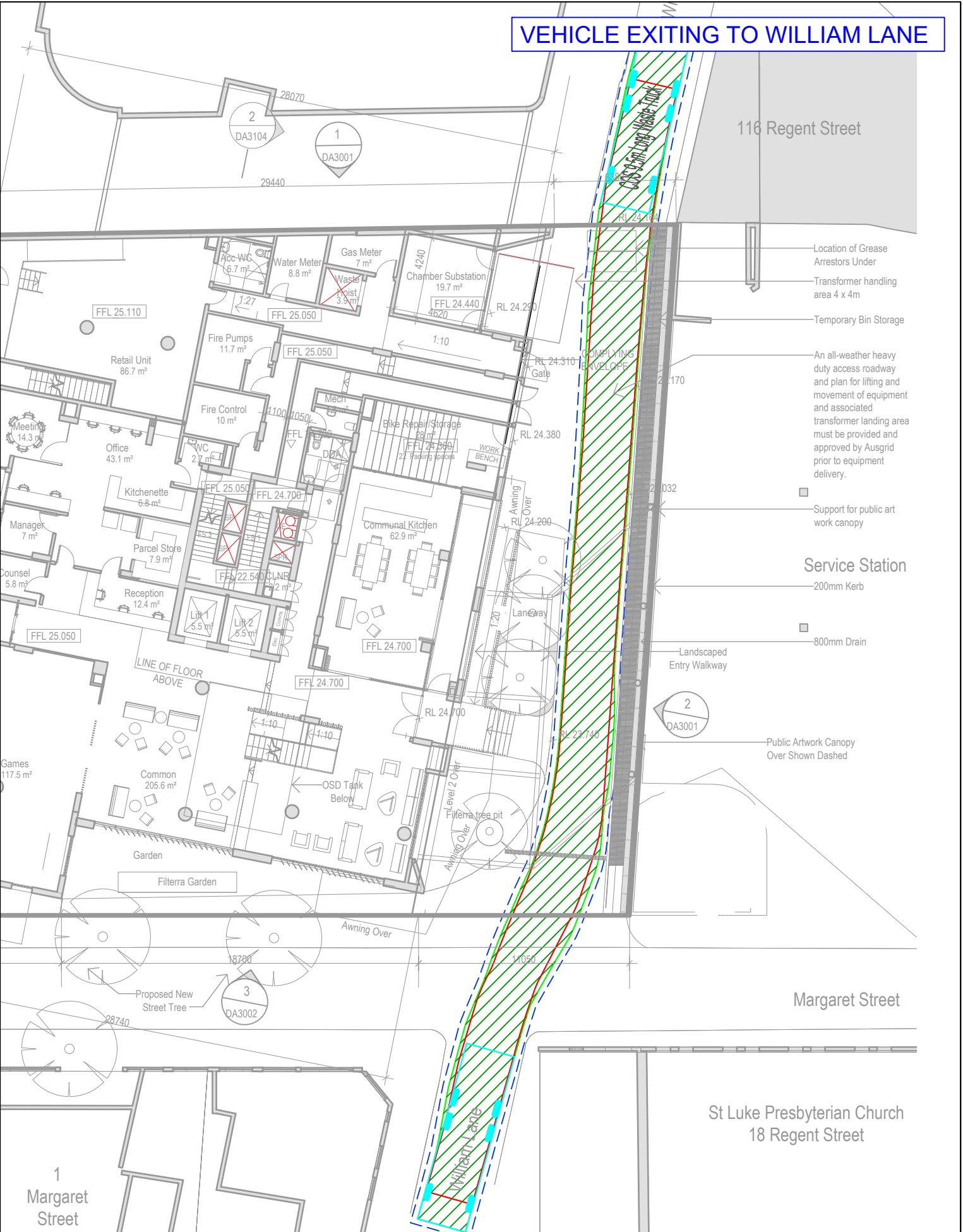
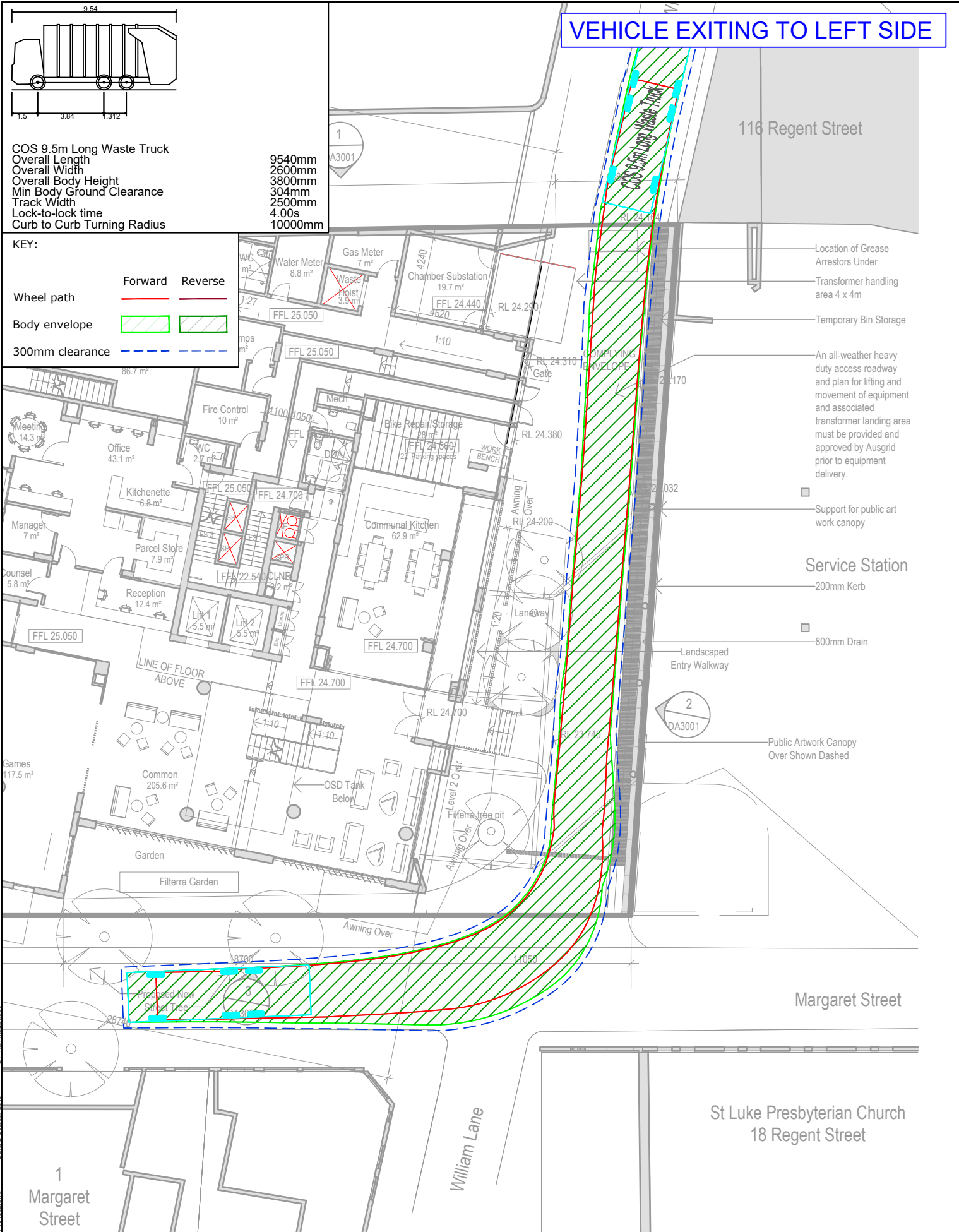
Michael,

See attached updated level 1 plan with kerbs showing in DWG and PDF formats, for your information.

Regards,

Stephen O'Hora
Associate

ALLEN JACK+COTTIER
Tel +61 2 9311 8222 **Dir** +61 2 9311 8292



REV.	DESCRIPTION	DRAWN	CHECK	APP'D	DATE
A	ISSUE FOR DISCUSSION	KM	ML	ML	02/10/19



PROJECT

13-23 GIBBONS STREET, REDFERN

TITLE

SWEPT PATH ANALYSIS
CITY OF SYDNEY 9.54m LONG WASTE TRUCK - ENTERING FROM WILLIAM LANE

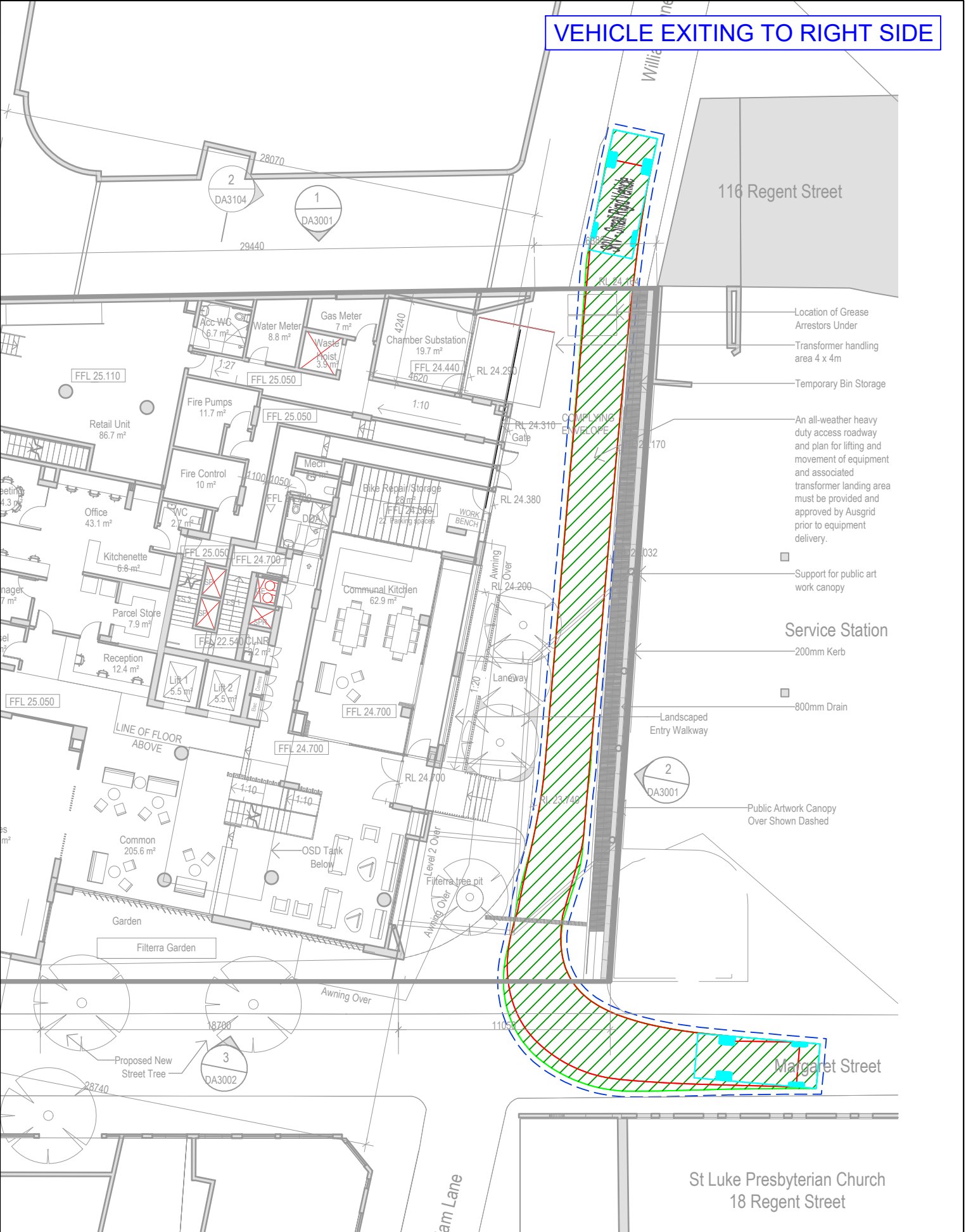
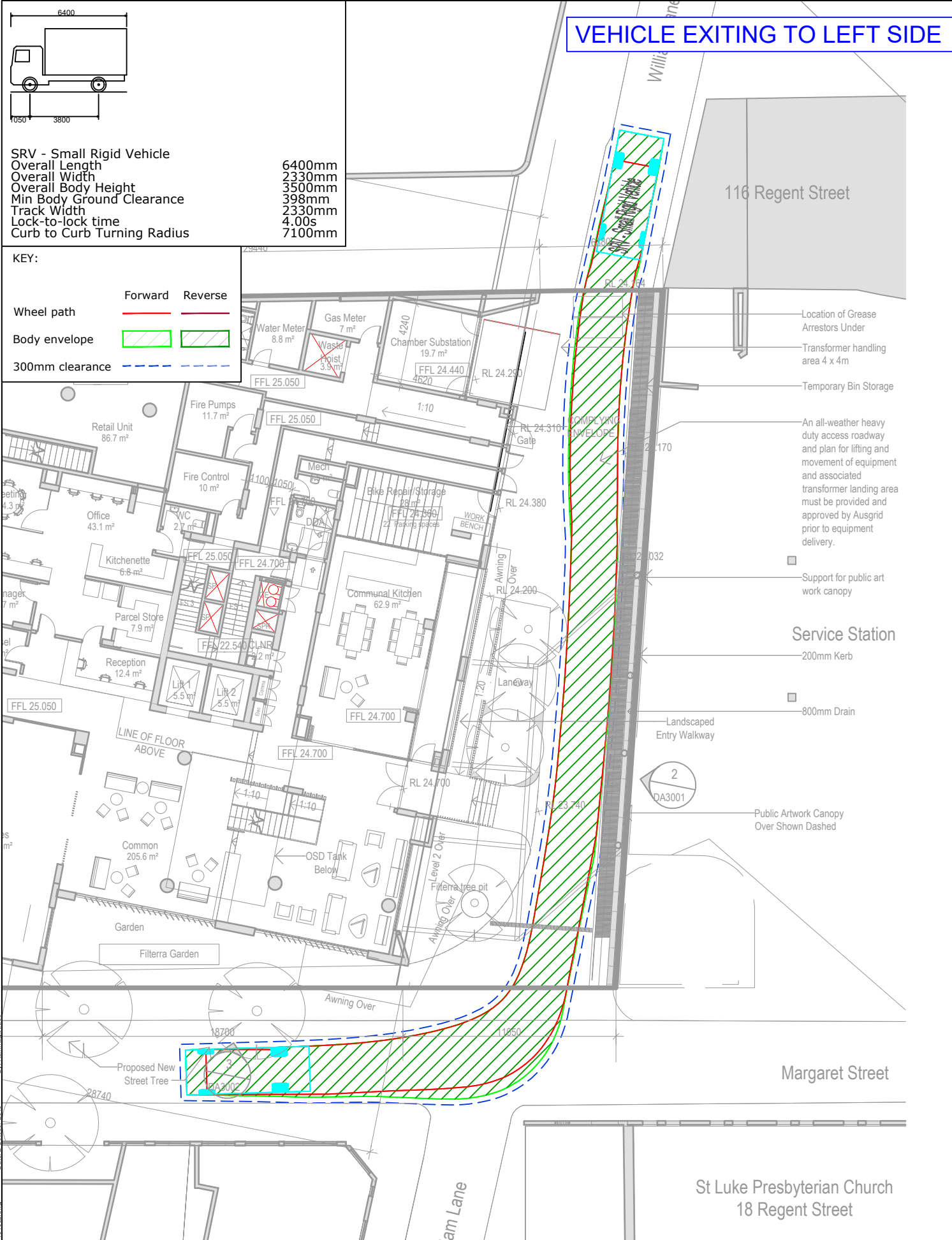
DWG No. 18077CAD007
FIGURE 1

DATE STAMP 02 OCTOBER 2019

PROJECT No. 18077

SCALE 1:250 @ A3

REV. A

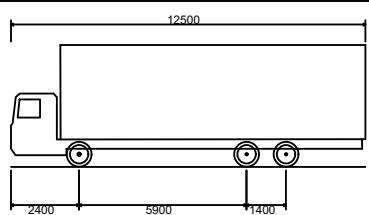


REV.	DESCRIPTION	DRAWN	CHECK	APP'D	DATE
A	ISSUE FOR DISCUSSION	KM	ML	ML	02/10/19



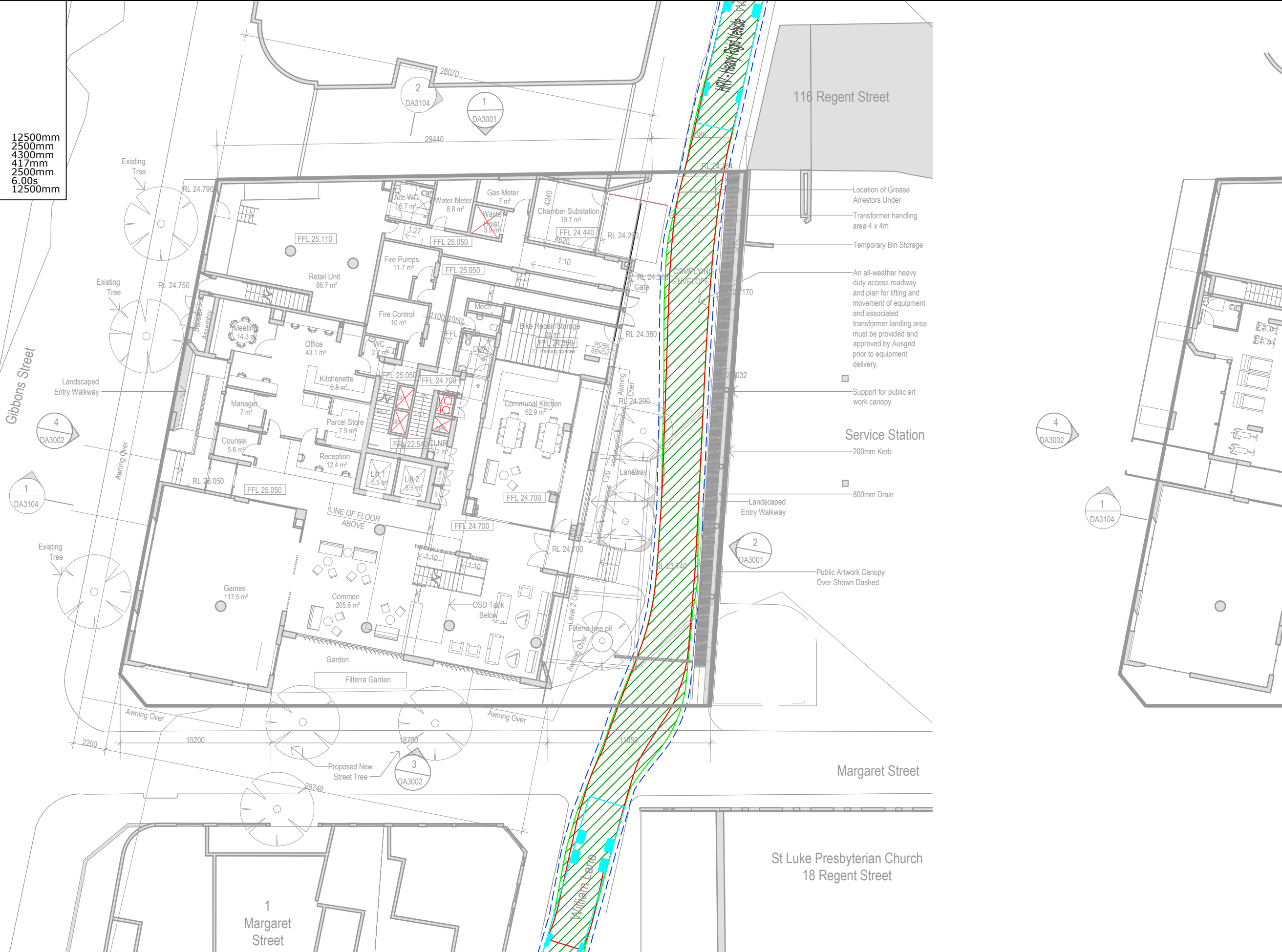
PROJECT	13-23 GIBBONS STREET, REDFERN
TITLE	SWEPT PATH ANALYSIS AS2890.2 6.4m SMALL RIGID VEHICLE - ENTERING FROM WILLIAM LANE

DWG No.	18077CAD007
FIGURE	2
DATE STAMP	02 OCTOBER 2019
PROJECT No.	18077
SCALE	1:250 @ A3
REV.	A



HRV - Heavy Rigid Vehicle
Overall Length 12500mm
Overall Width 2500mm
Overall Body Height 4300mm
Min Body Ground Clearance 417mm
Track Width 2500mm
Lock-to-lock time 6.00s
Curb to Curb Turning Radius 12500mm

KEY:	
Wheel path	Forward Reverse
Body envelope	
300mm clearance	



REV.	DESCRIPTION	DRAWN	CHECK	APP'D	DATE
A	ISSUE FOR DISCUSSION	KM	ML	ML	02/10/19



PROJECT	13-23 GIBBONS STREET, REDFERN	
TITLE	SWEPT PATH ANALYSIS AS2890.2 12.5m HEAVY RIGID VEHICLE - ENTERING FROM WILLIAM LANE	

DWG No. 18077CAD007 FIGURE 3	
DATE STAMP 02 OCTOBER 2019	
PROJECT No. 18077	SCALE 1:250 @ A3
REV. A	

