

**SIR STAMFORD AT CIRCULAR QUAY (2000) LTD
AT TRUSTEE FOR SIR STAMFORD AT CIRCULAR QUAY (2000) TRUST**

P.O. Box 957 Offshore Incorporations Centre, Road Town, Tortola, British Virgin Islands

27 October 2017

Attention: Karl Fetterplace

NSW Department of Planning and Environment
320 Pitt Street
Sydney NSW 2000

Dear Sir

**Submission in relation to Stage 1 development application no. SSD 16/7693 for a ballroom addition and comprehensive hotel upgrade for the Intercontinental Hotel (DA)
Property: 99-113 and 115-119 Macquarie Street, Sydney**

In connection with Stamford Property Services Pty Ltd's (Stamford) submission to the DA, we write to advise the Department of Planning and Environment (**DPE**) that Sir Stamford At Circular Quay (2000) Ltd¹, as trustee of Sir Stamford At Circular Quay (2000) Trust², the owner of Sir Stamford Hotel on Lot 12 under DP1197140 (corner of Macquarie and Albert Streets) (**Stamford Site**) which adjoins Transport House to the south, is preparing and is about to submit a development application with City of Sydney Council (**Council**).

The development application will seek consent for conservation of the existing heritage item for residential use and construction of a mixed-use tower comprising retail development along the Macquarie Street frontage and residential apartments for the balance of the tower, on the Stamford Property (**Stamford Development**).

We request that DPE (as delegate for the Minister for Planning) take into account and consider the Stamford Development as part of its assessment of the DA. In this regard, although the Stamford Development has not yet been determined, it is appropriate and necessary that DPE take into account and consider the Stamford Development as part of its cumulative impact assessment which is a proper consideration under section 79C of the *Environmental Planning and Assessment Act 1979*.

We enclose, for your information, a copy of the latest architectural plans which will form part of the development application package to be lodged with Council. We anticipate that the development application will be lodged with Council imminently (and in any event within the next 2 weeks).

If you have any questions regarding the Stamford Development, please feel free to contact Justin Micallef on +61 2 9267 6755.

Yours sincerely



Ow Yew Heng
Director

¹ Formerly known as Logan Capital Limited. Documentation to change the name at the Land Titles Registry is being undertaken.

² Formerly known as Logan Trust. Documentation to change the name at the Land Titles Registry is being undertaken.

STAMFORD ON MACQUARIE

93 -95 MACQUARIE STREET SYDNEY

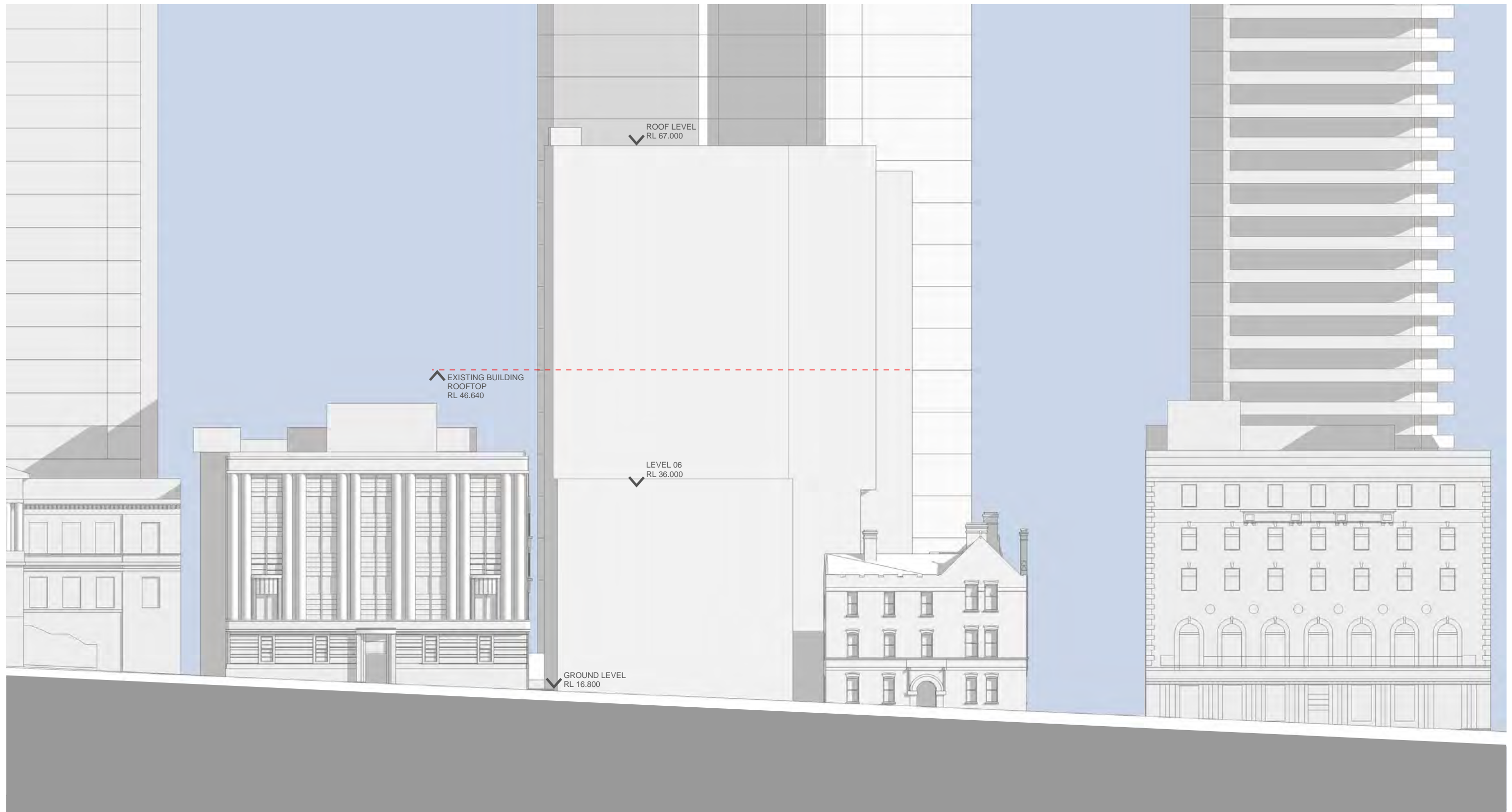
STAGE 1 DEVELOPMENT APPLICATION

PROPOSED BUILDING ENVELOPE

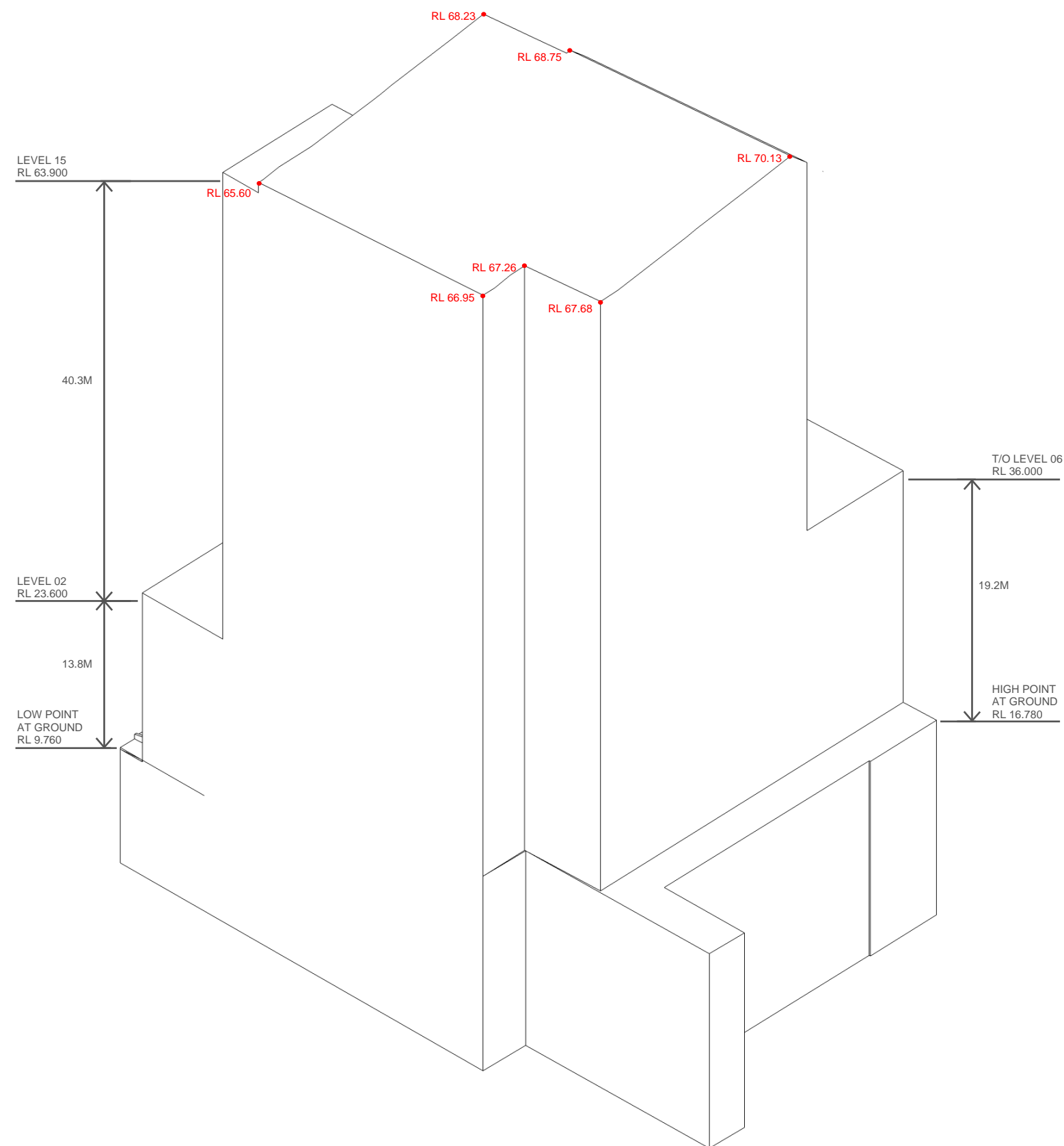
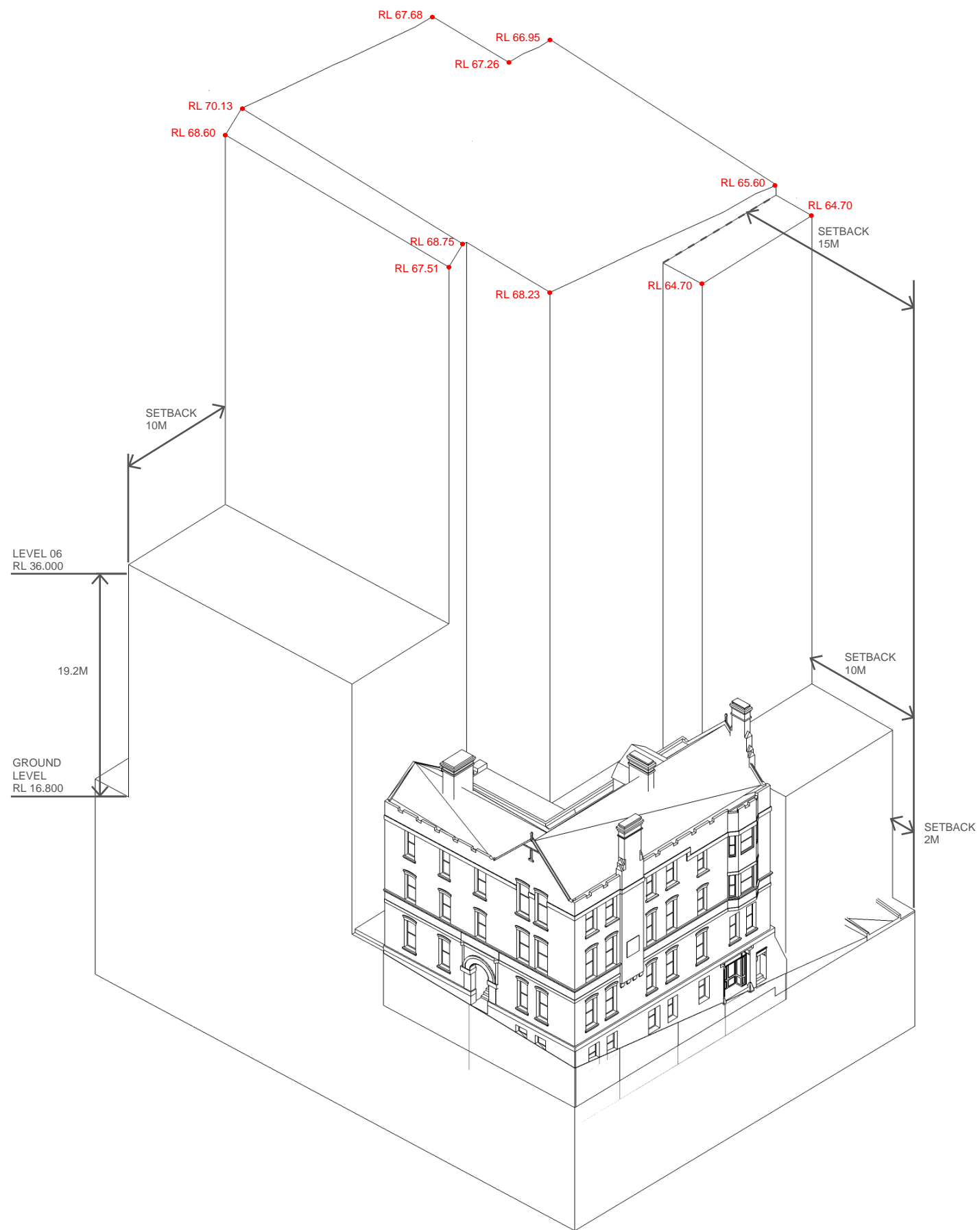
KANNFINCH

17.10.17





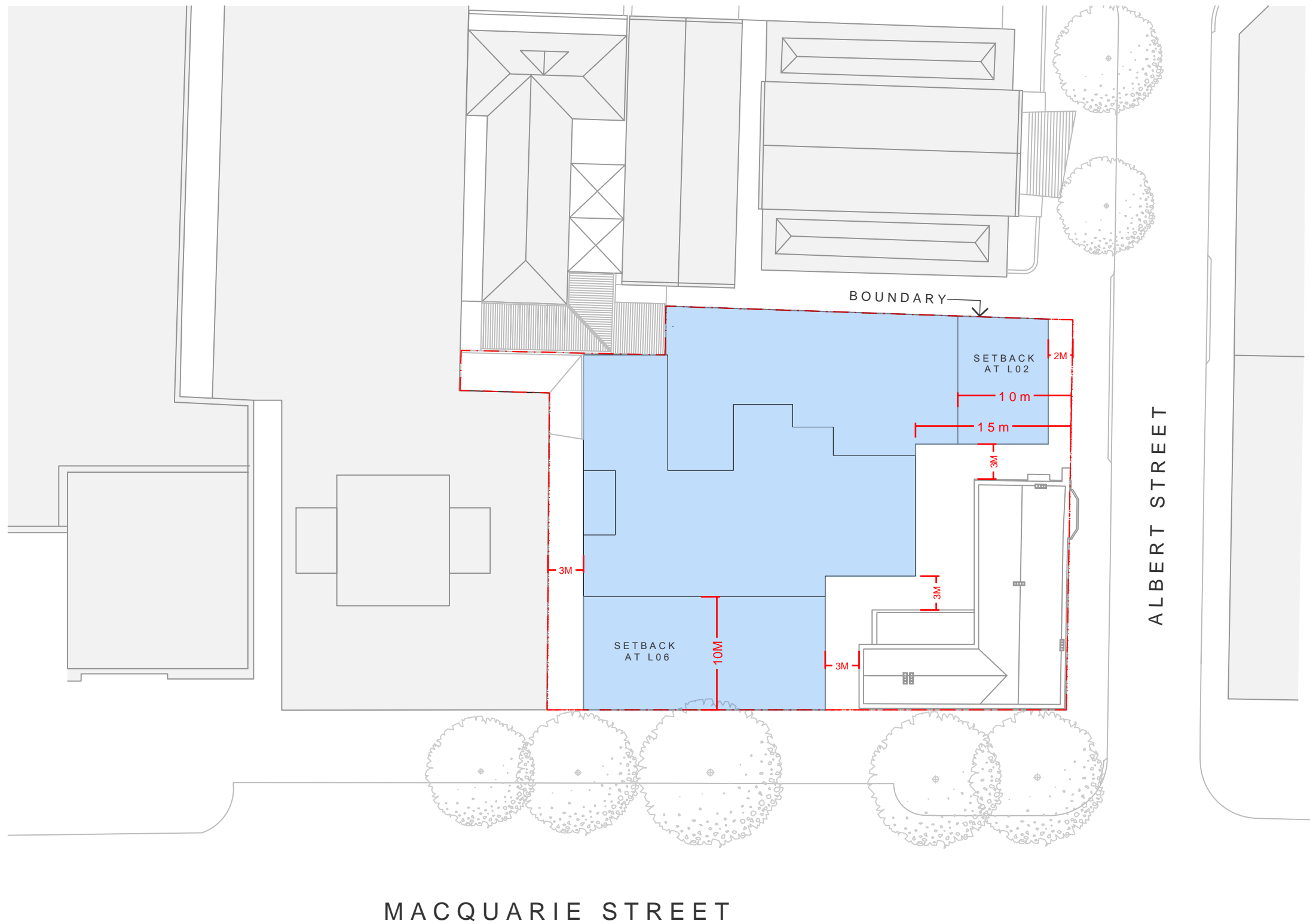
STAGE 1 DEVELOPMENT APPLICATION
PROPOSED BUILDING ENVELOPE



PROPOSED BUILDING ENVELOPE
MASSING DIAGRAMS

KANNFINCH

17.10.17



LEGEND

PROPOSED ENVELOPE

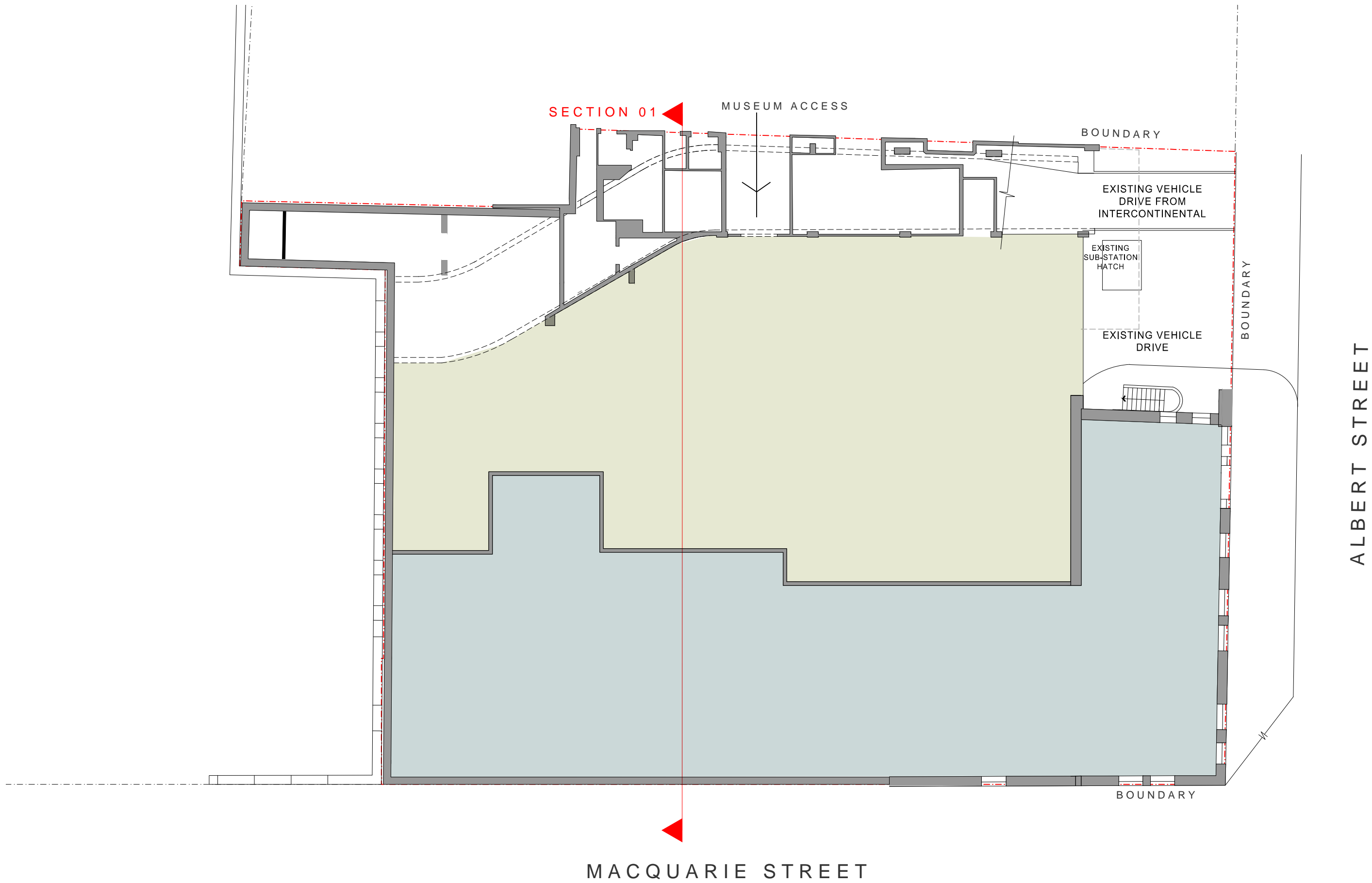
1:400 @ A3



STAMFORD ON MACQUARIE
PLAN SITE CONTEXT

KANNFINCH

17.10.17



LEGEND

RETAIL

BASEMENT

STAMFORD ON MACQUARIE

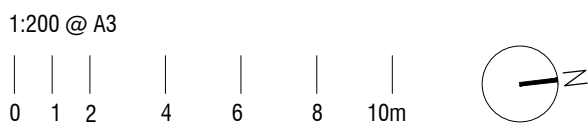
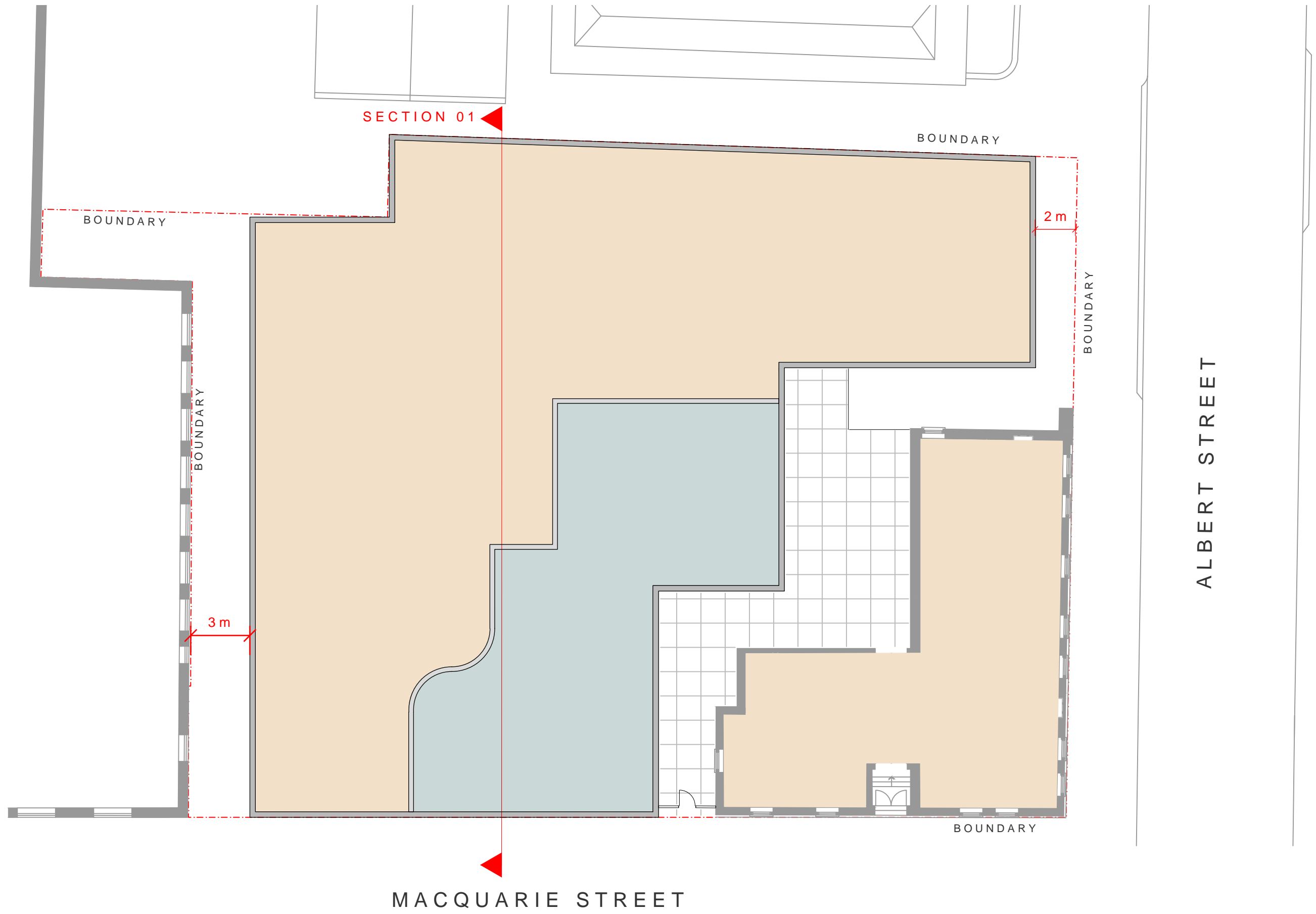
PLAN BASEMENT 01

KANNFINCH 17.10.17

1:200 @ A3

0 1 2 4 6 8 10m

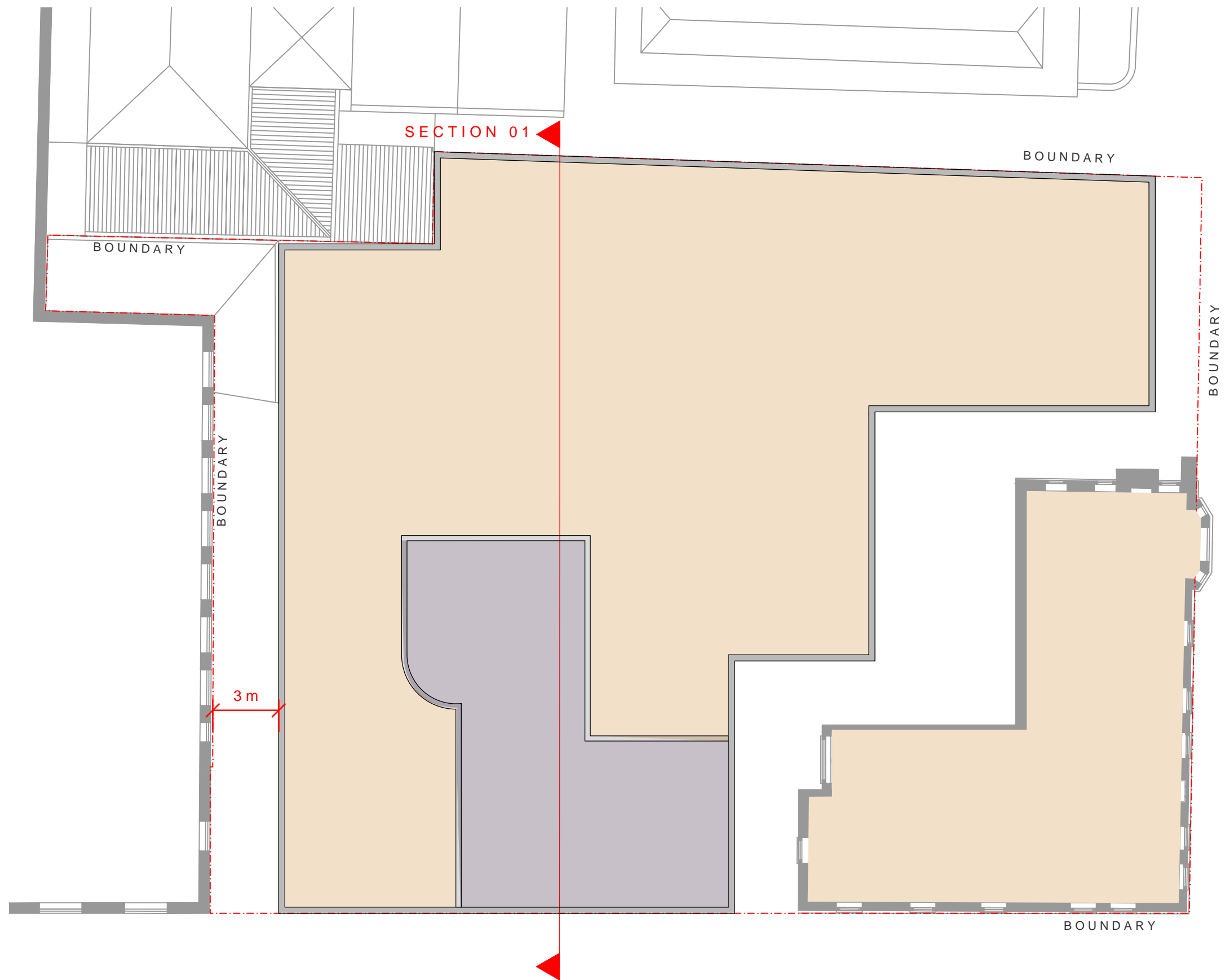
North Arrow



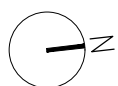
LEGEND

	RESIDENTIAL
	RETAIL

STAMFORD ON MACQUARIE
PLAN GROUND LEVEL
KANNFINCH 17.10.17



1:200 @ A3



LEGEND

- RESIDENTIAL
- COMMUNAL FACILITIES

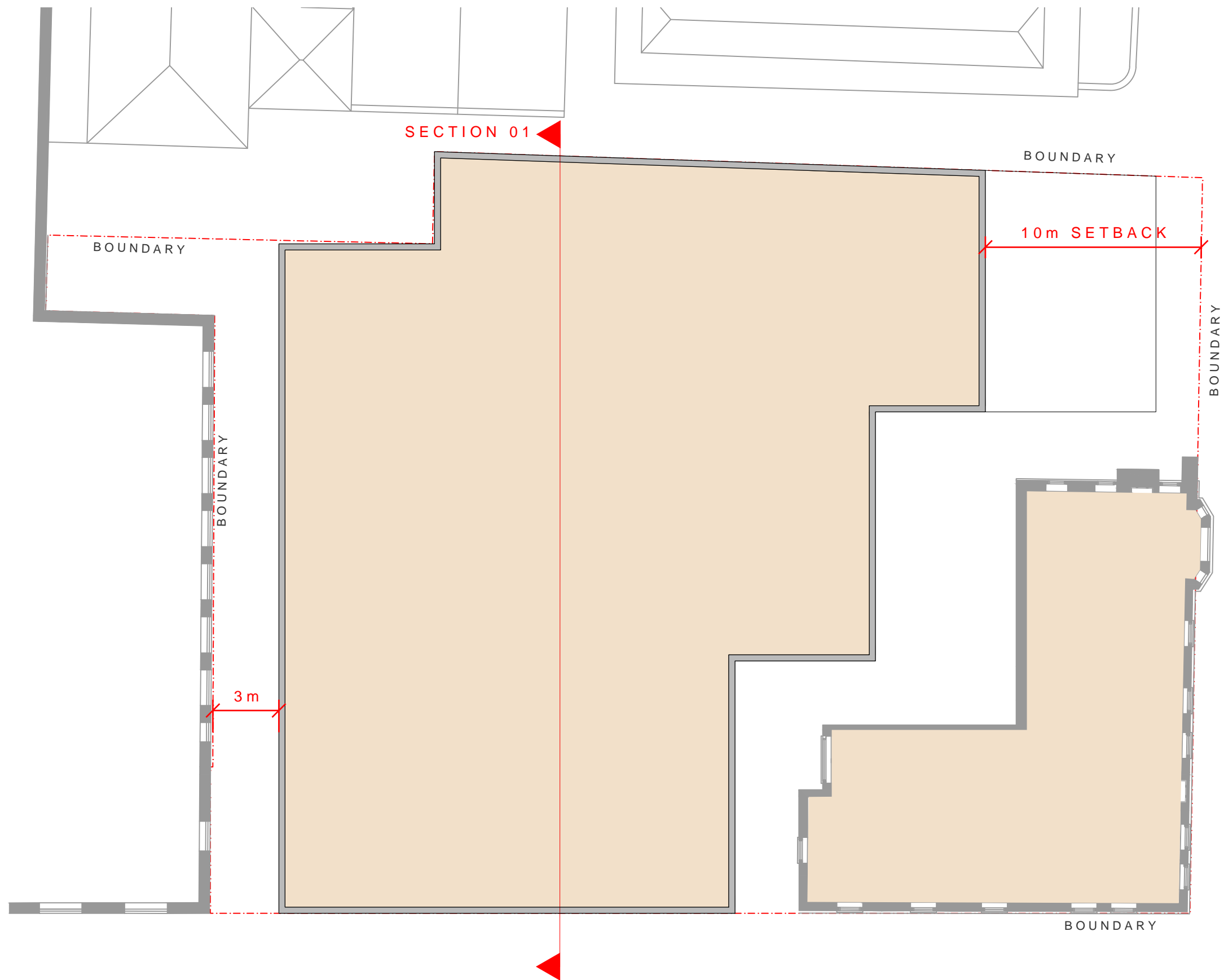
STAMFORD ON MACQUARIE

PLAN

LEVEL 01

KANNFINCH

17.10.17

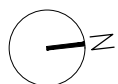
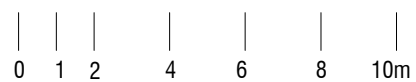


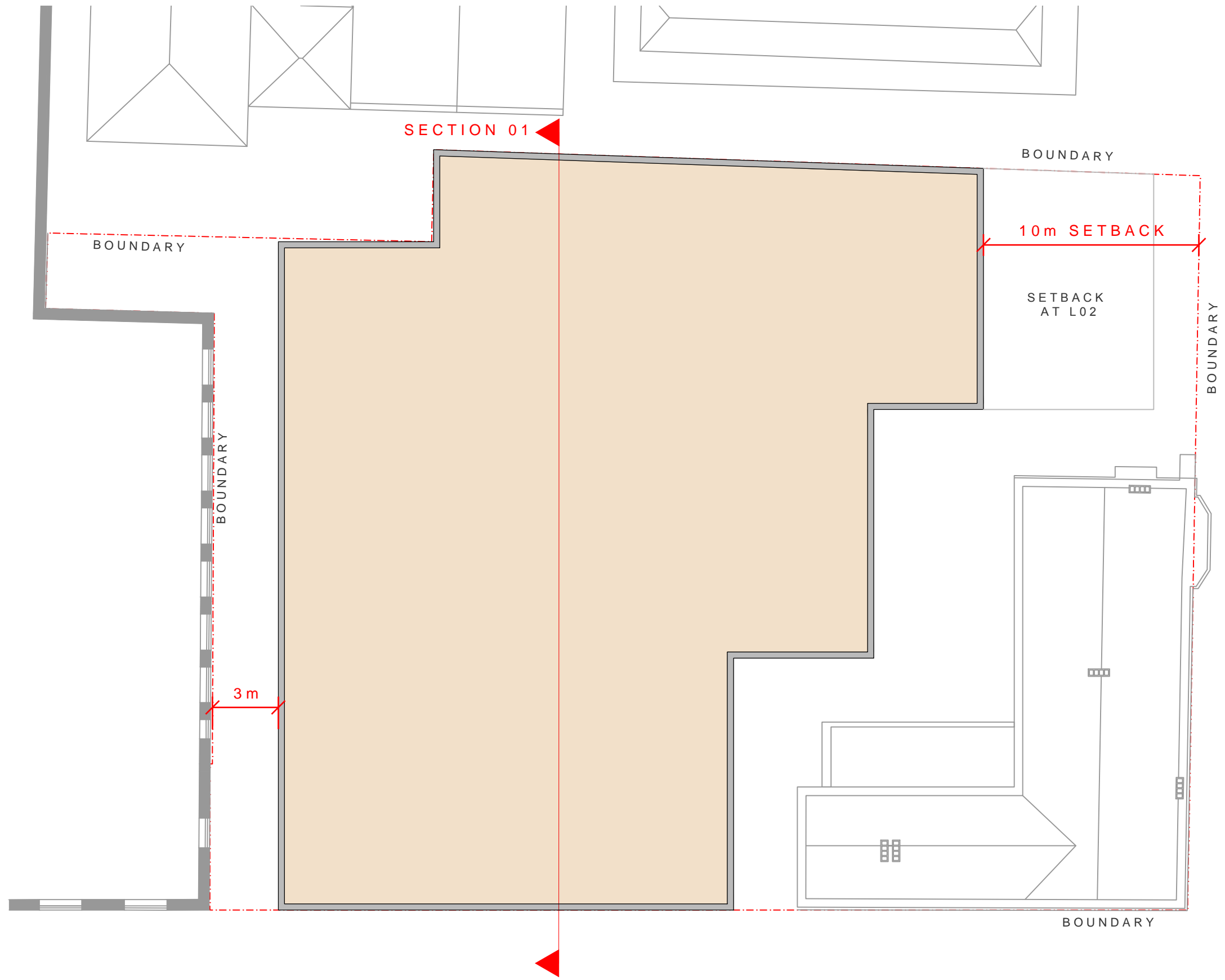
LEGEND
 RESIDENTIAL

STAMFORD ON MACQUARIE
 PLAN
 KANNFINCH

LEVEL 02
 17.10.17

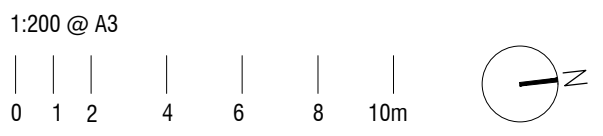
1:200 @ A3

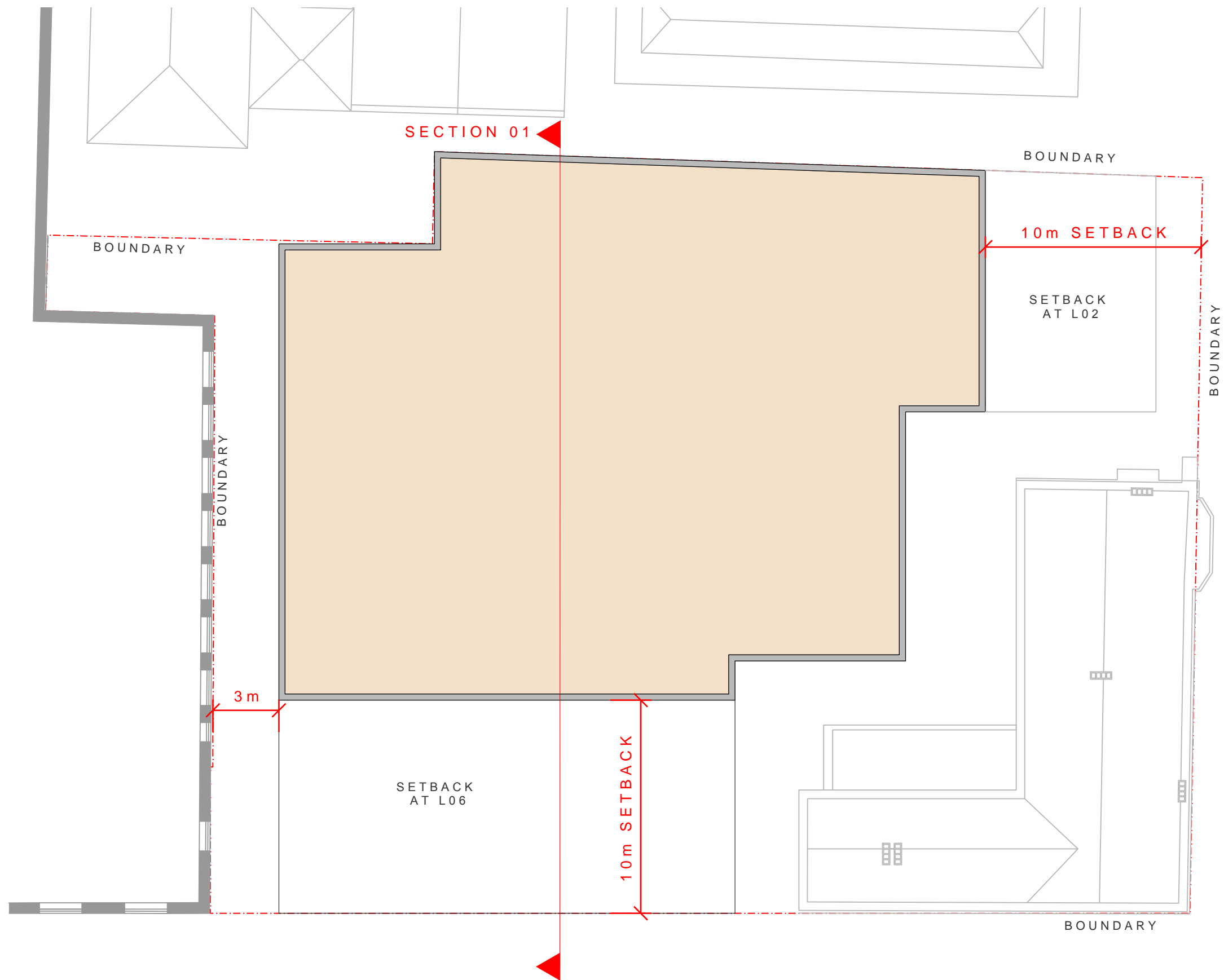




LEGEND
RESIDENTIAL

STAMFORD ON MACQUARIE
PLAN
LEVELS 03-05
KANNFINCH





LEGEND

RESIDENTIAL

STAMFORD ON MACQUARIE

PLAN LEVELS 06-14

KANNFINCH 17.10.17



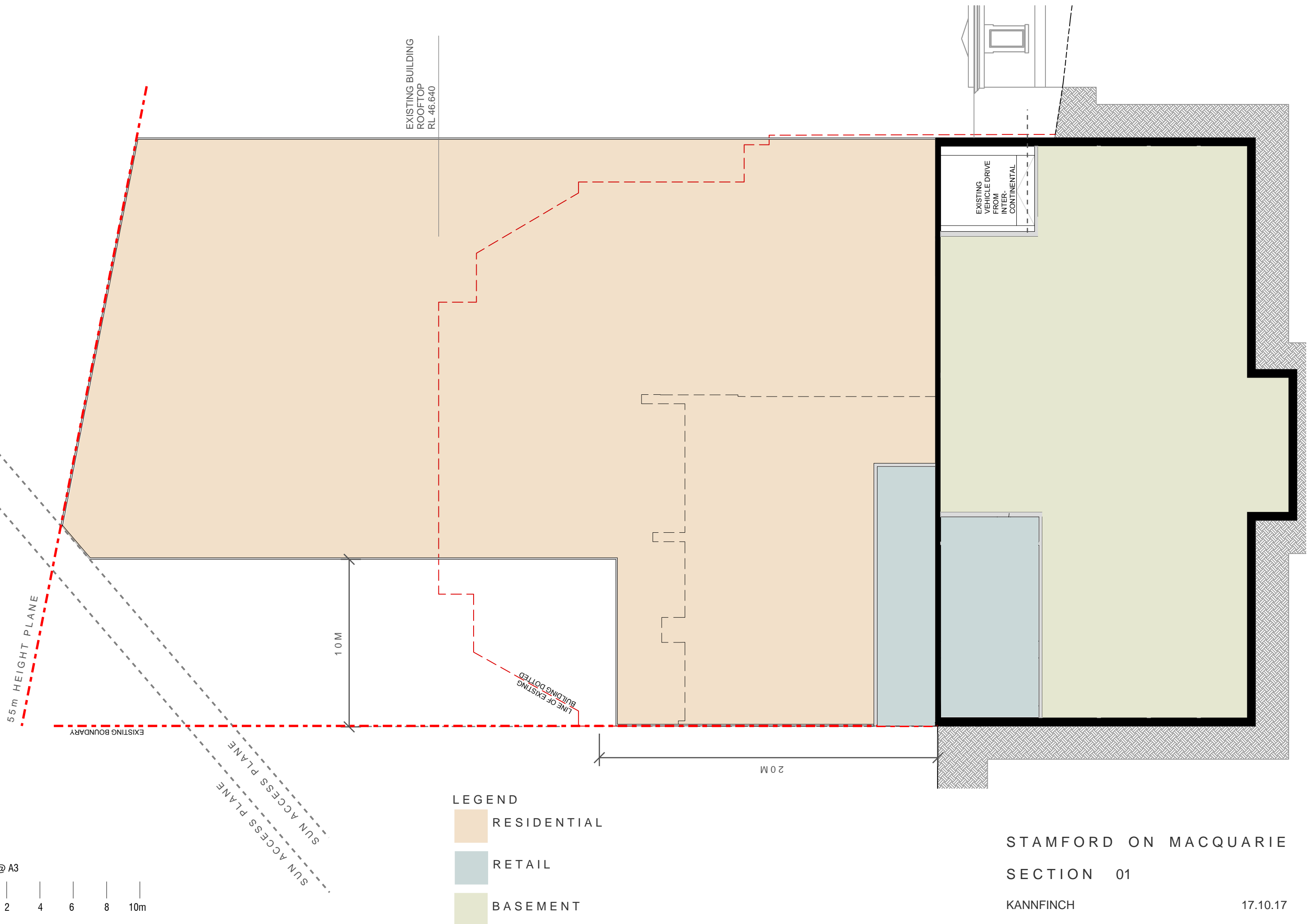
1:200 @ A3

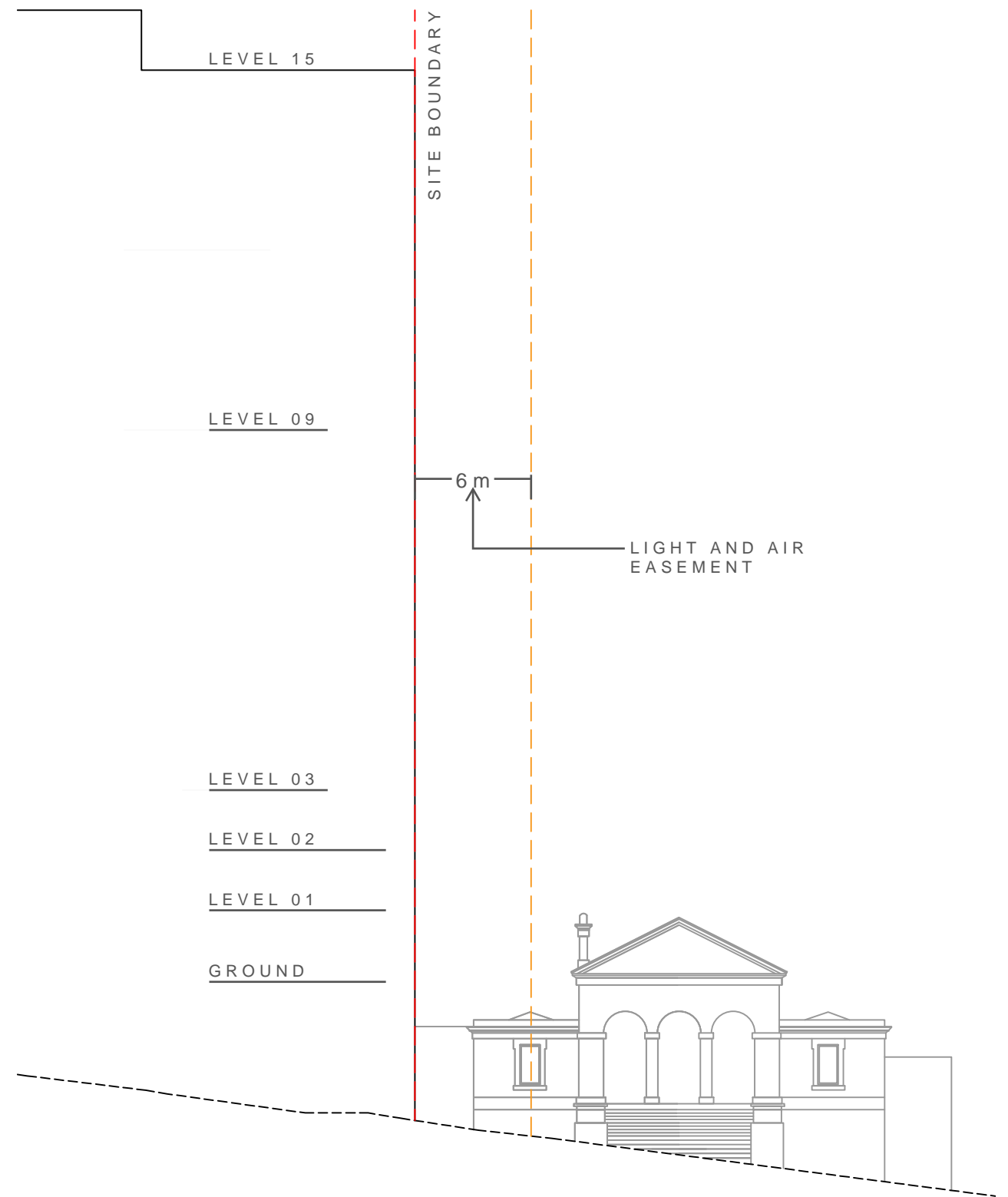


LEGEND

- RESIDENTIAL
- RETAIL
- BASEMENT

STAMFORD ON MACQUARIE
SECTION 01
KANNFINCH 17.10.17





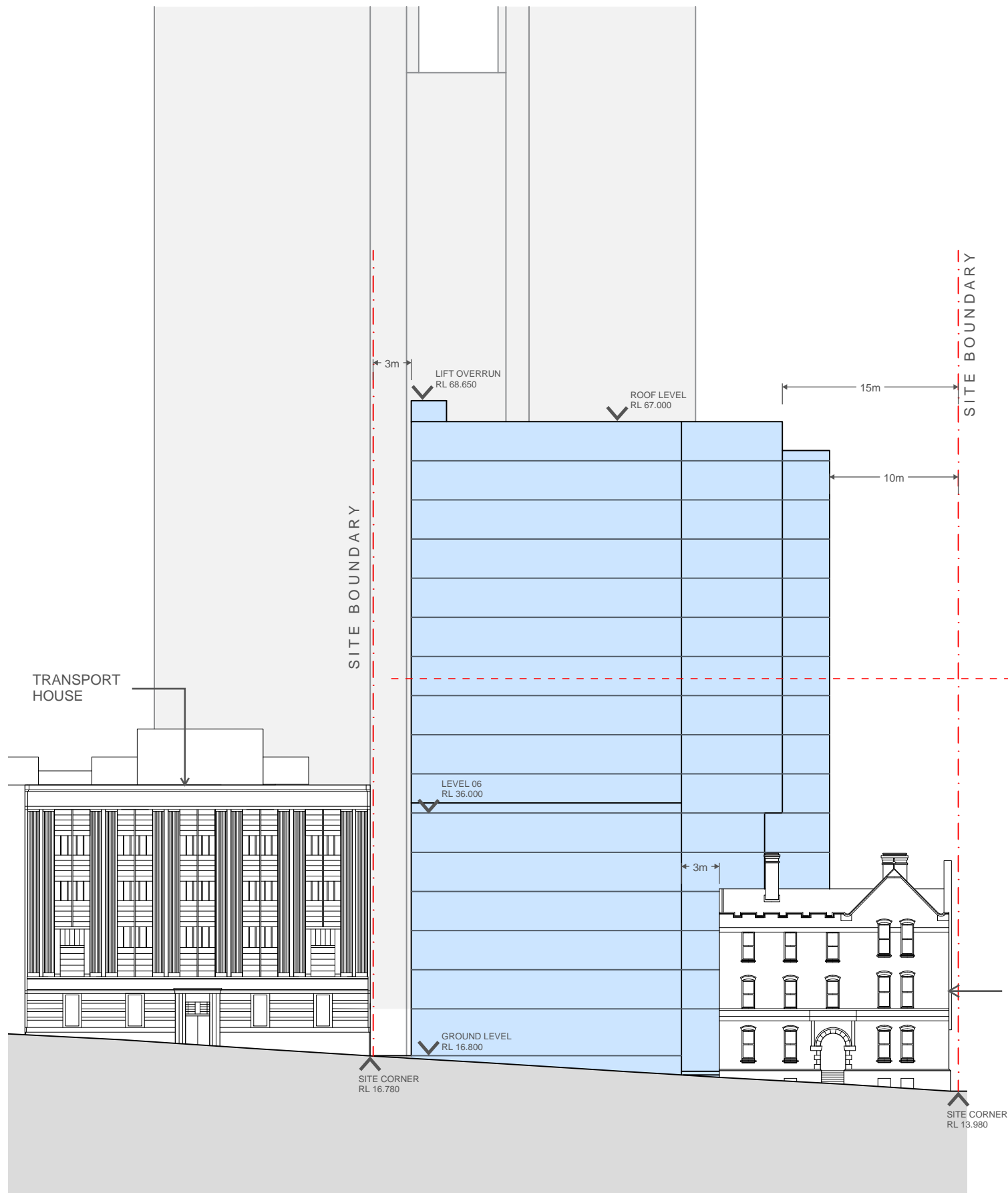
6M LIGHT AND AIR EASEMENT
ALBERT ST ELEVATION

DIAGRAMMATIC SECTION - 55m HEIGHT PLANE
SHOWING 6M LIGHT AND AIR EASEMENT

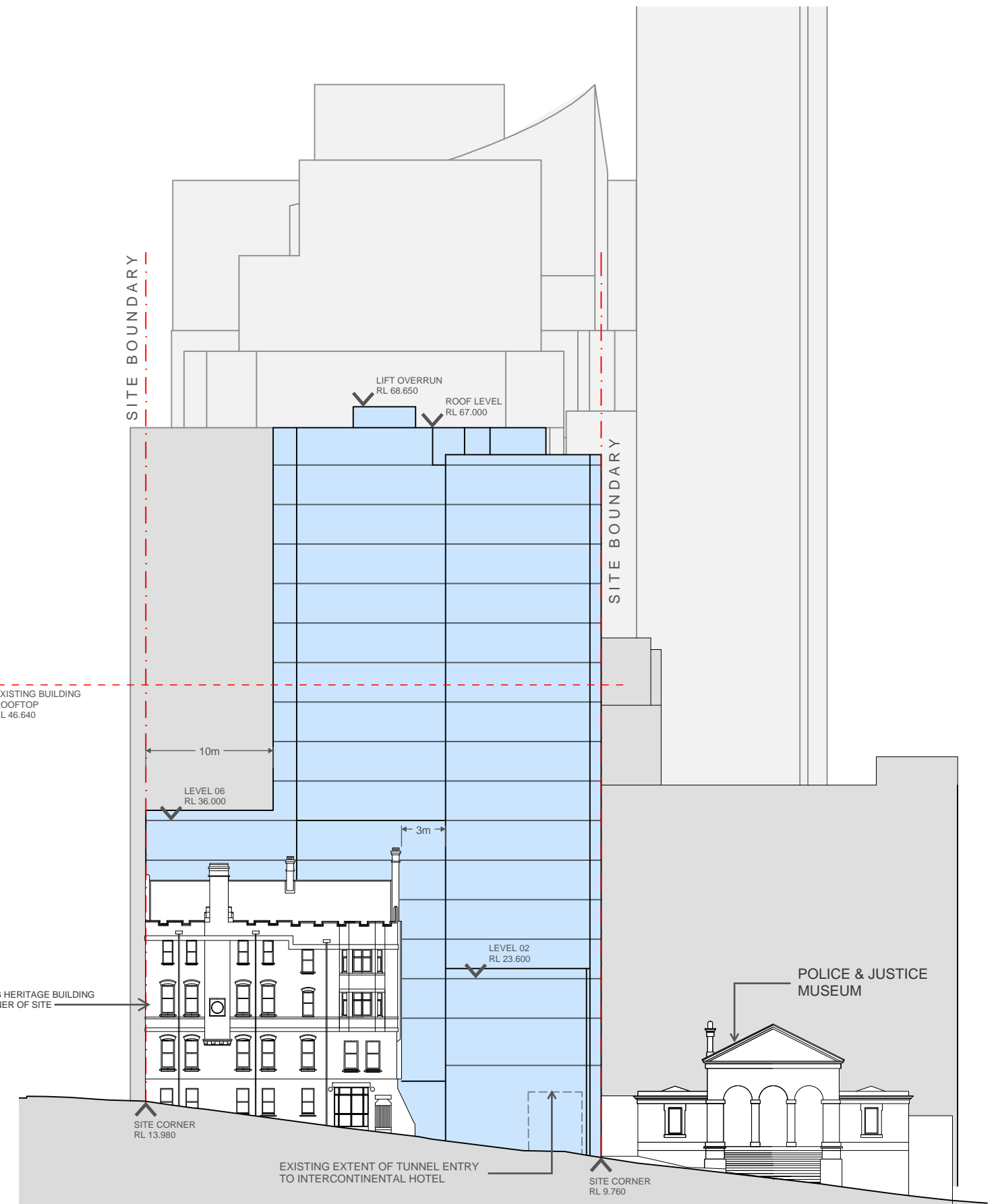
STAMFORD ON MACQUARIE
REFERENCE SCHEME
DIAGRAMMATIC SECTION

KANNFINCH

17.10.17



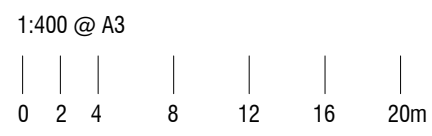
MACQUARIE ST ELEVATION



ALBERT ST ELEVATION

LEGEND

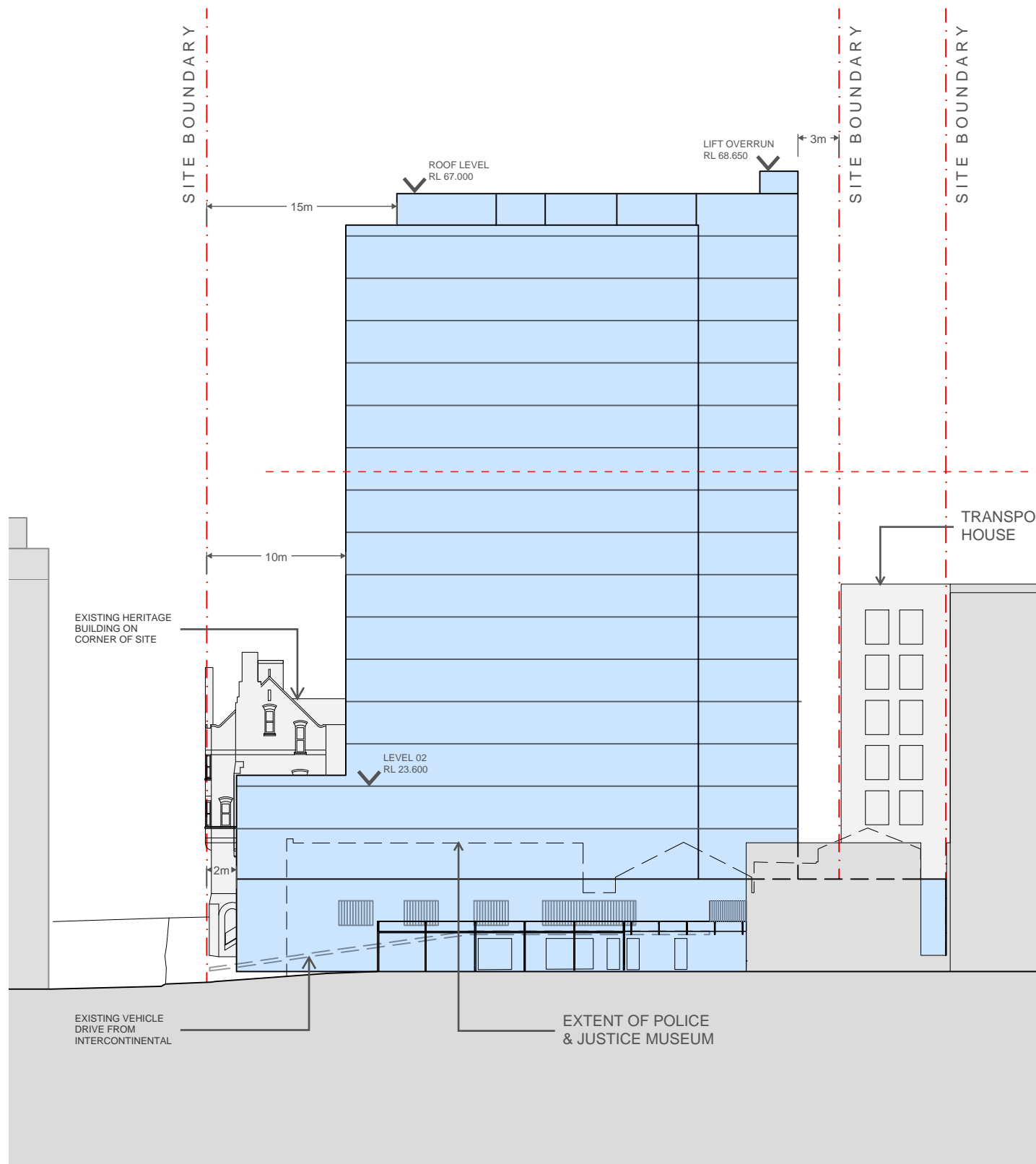
PROPOSED BUILDING ENVELOPE



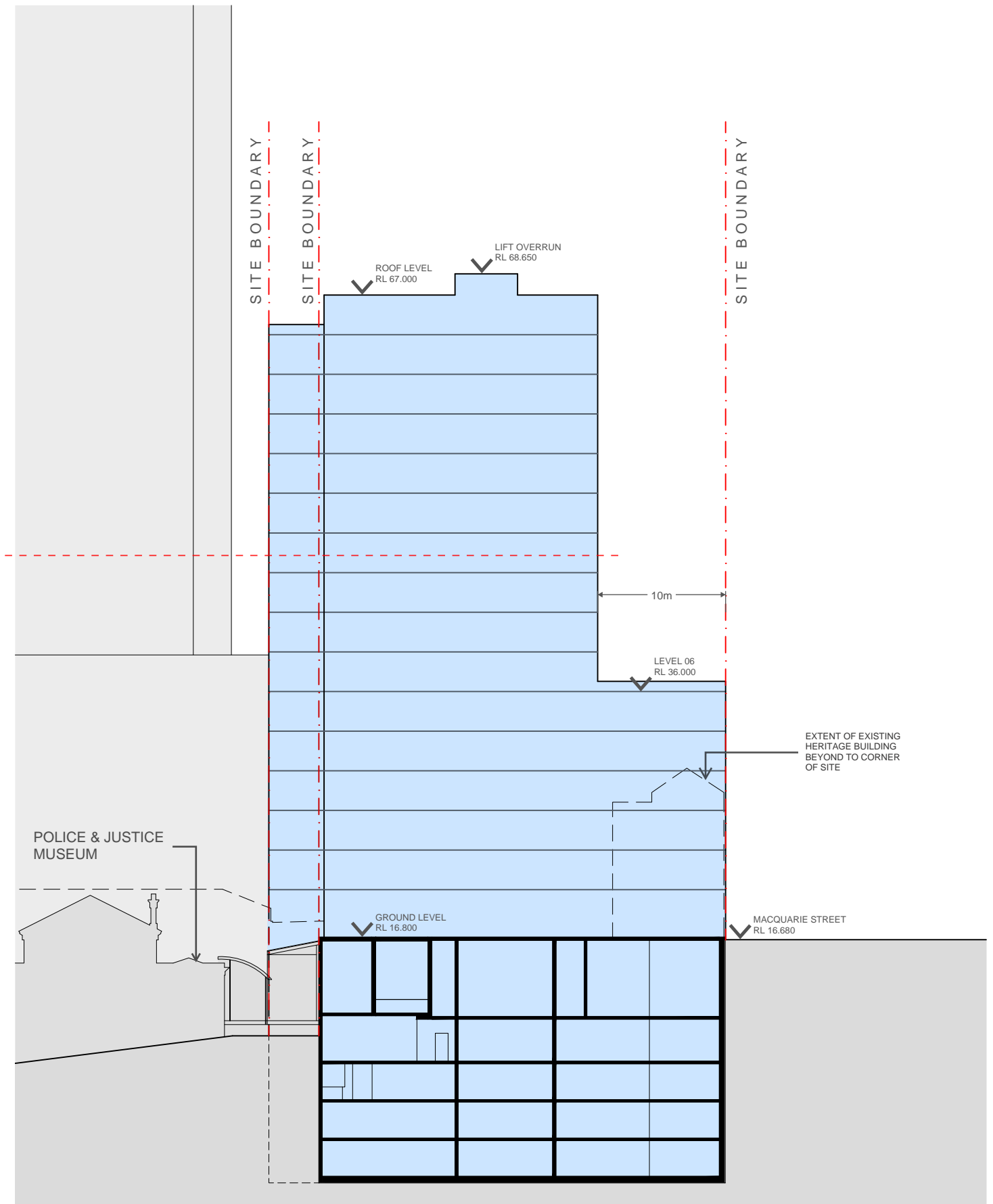
STAMFORD ON MACQUARIE
STREET ELEVATIONS

KANNFINCH

17.10.17



WESTERN BOUNDARY ELEVATION



SOUTHERN BOUNDARY ELEVATION

LEGEND

PROPOSED BUILDING ENVELOPE

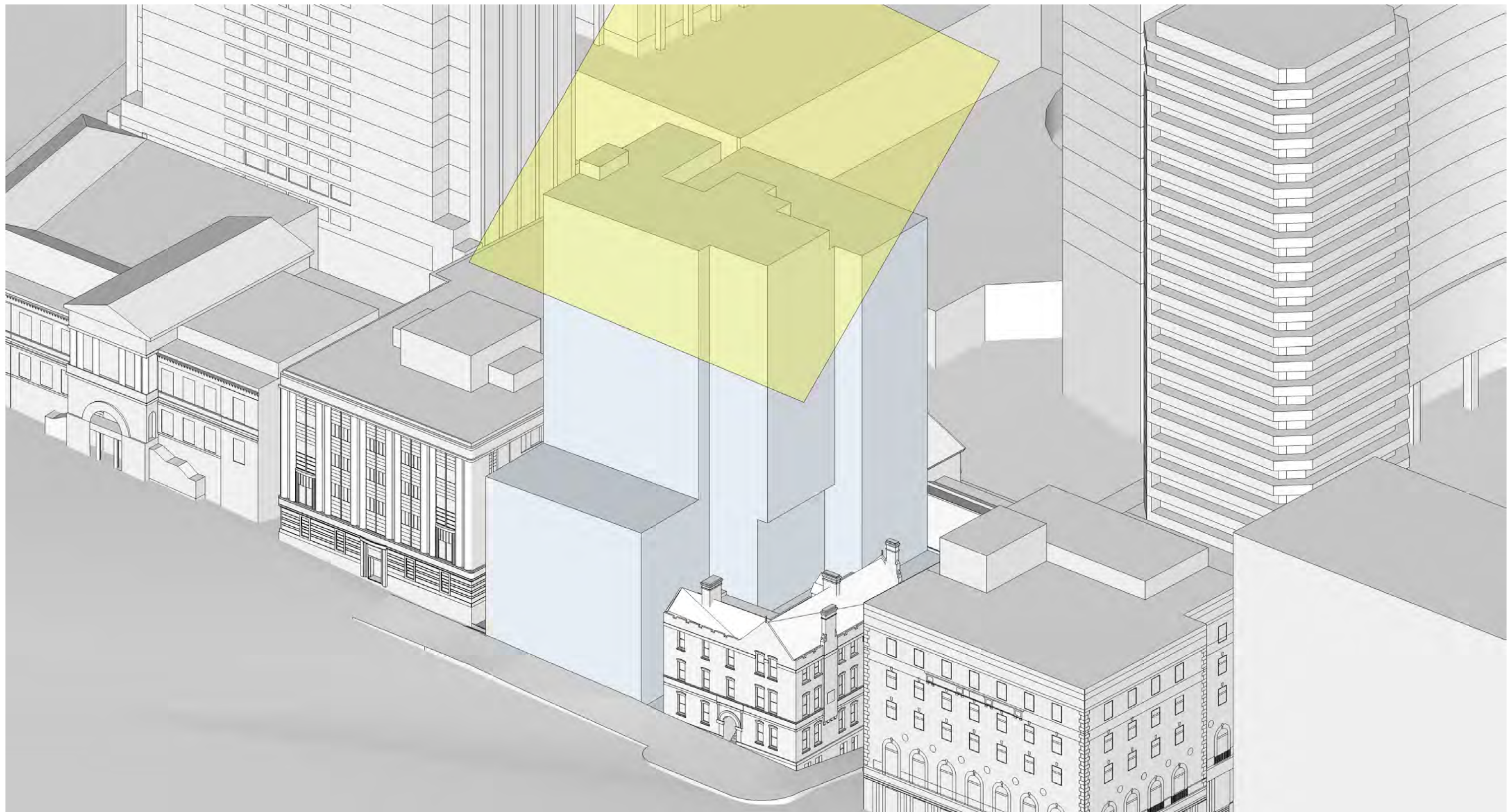
1:400 @ A3



STAMFORD ON MACQUARIE
STREET ELEVATIONS

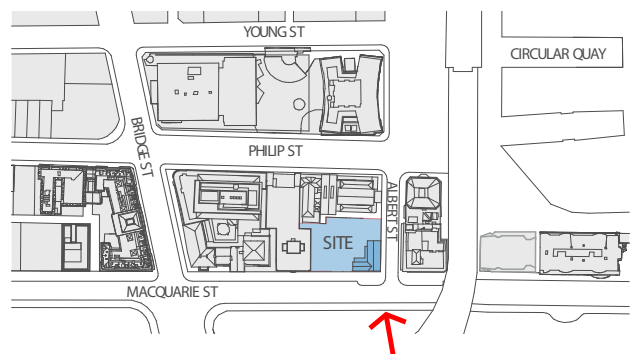
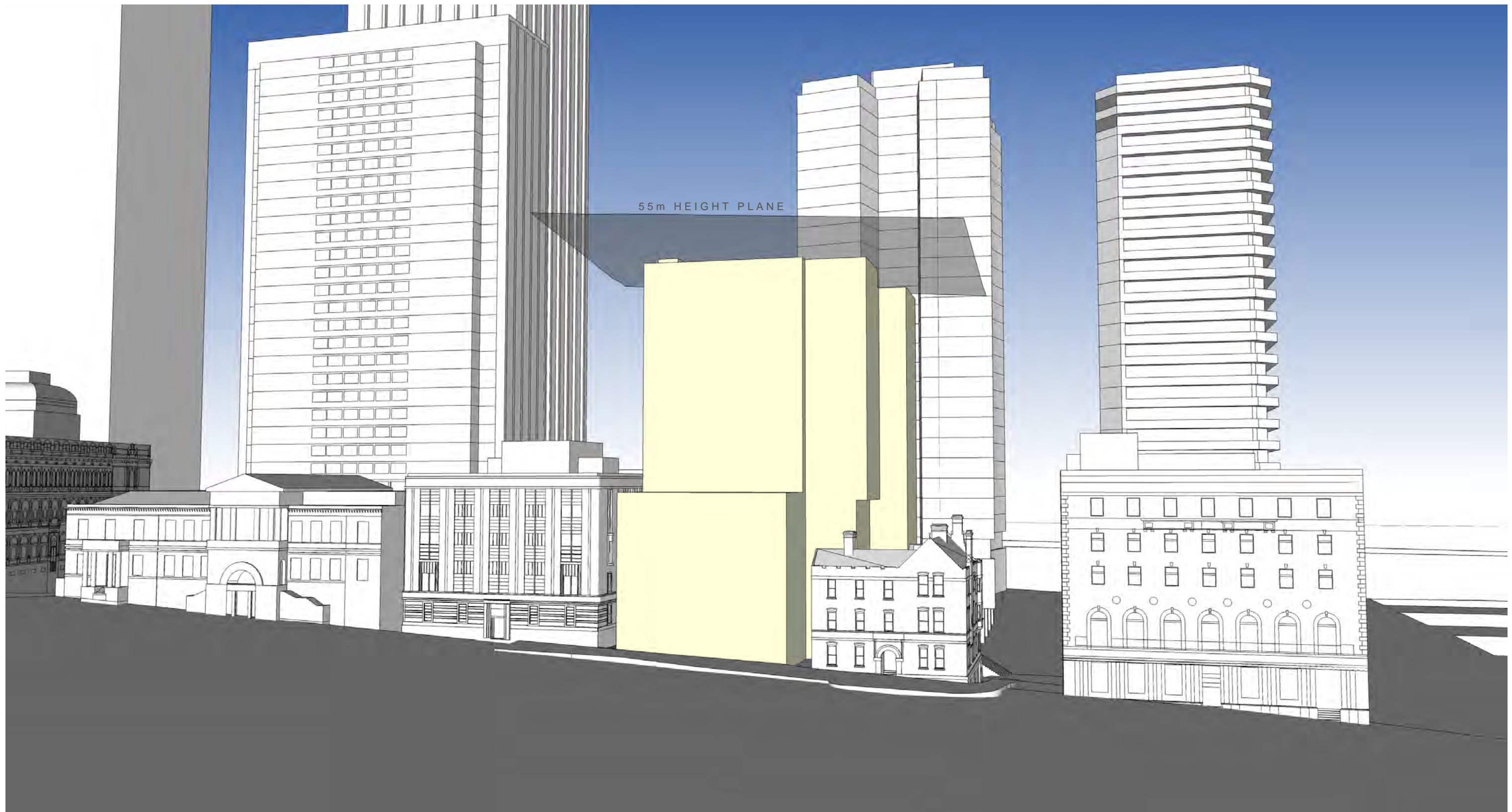
KANNFITCH

17.10.17



VIEW 01
ILLUSTRATING SUN ACCESS PLANE

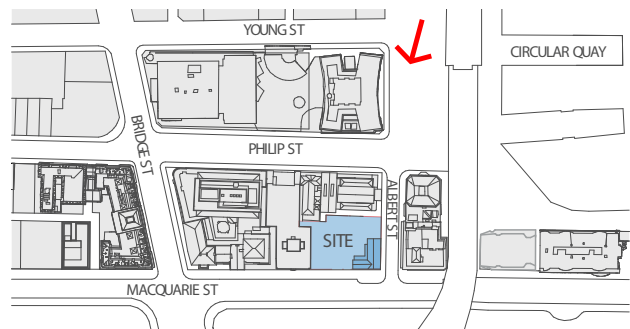
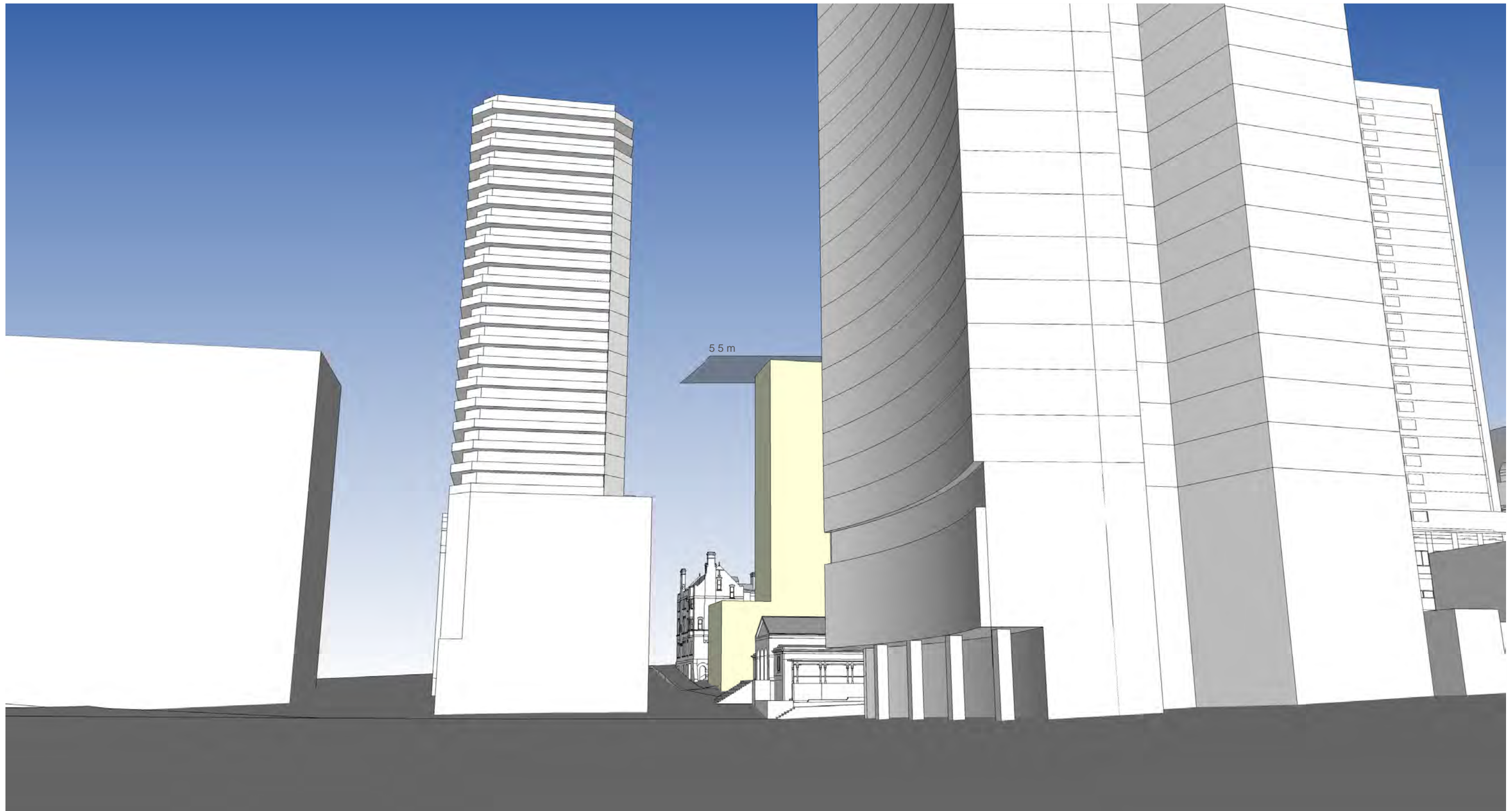
STAMFORD ON MACQUARIE
PROPOSED BUILDING ENVELOPE
KANNFINCH 17.10.17



VIEW 02

ILLUSTRATING - 55m HEIGHT PLANE

STAMFORD ON MACQUARIE
 PROPOSED BUILDING ENVELOPE
 KANNFINCH 17.10.17



VIEW 03

ILLUSTRATING - 55m HEIGHT PLANE

STAMFORD ON MACQUARIE
 PROPOSED BUILDING ENVELOPE
 KANNFINCH 17.10.17

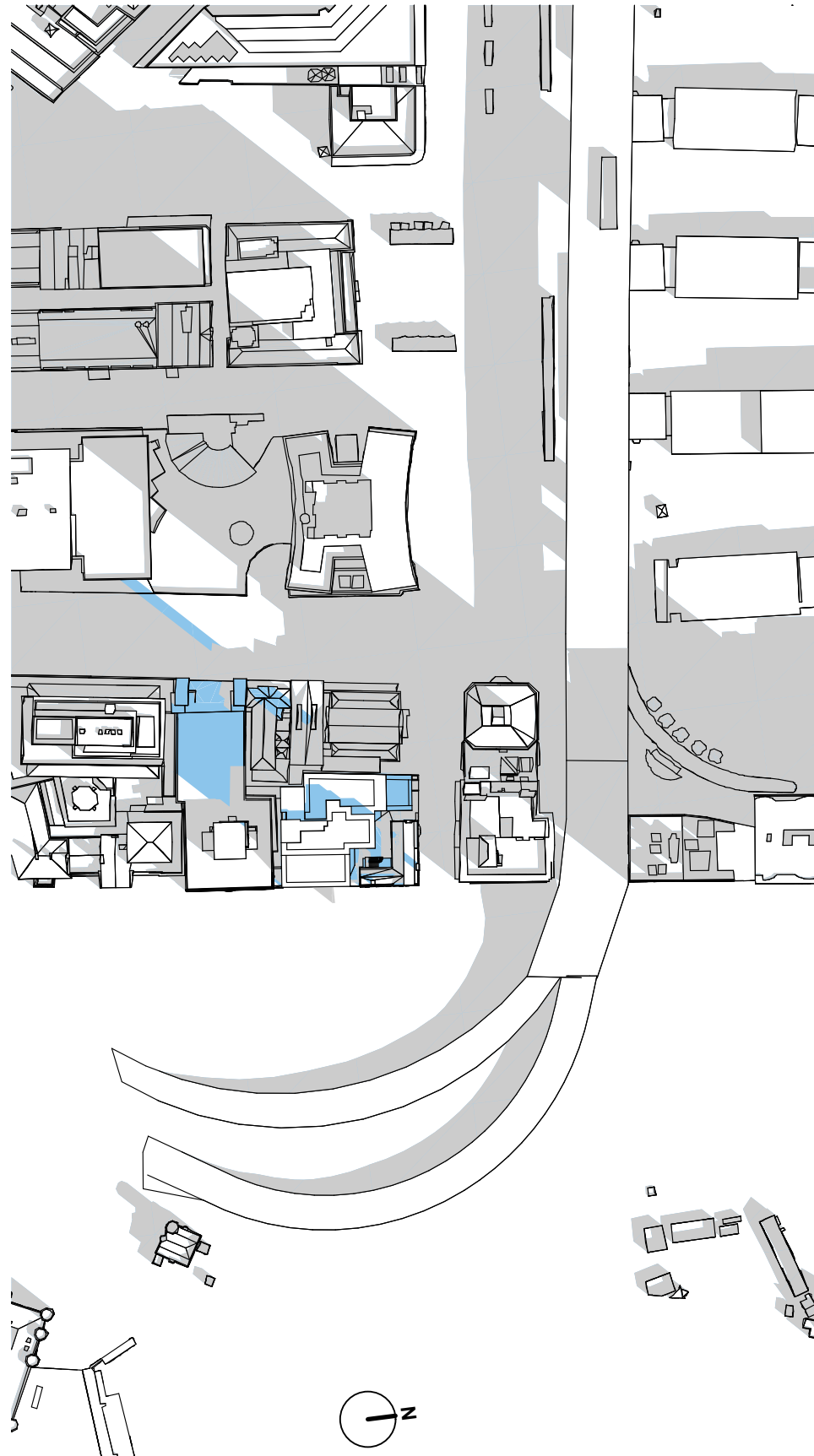


ELEVATION - ALBERT ST
 ILLUSTRATING - 55m HEIGHT PLANE
 & SUN ACCESS PLANE

STAMFORD ON MACQUARIE
 PROPOSED BUILDING ENVELOPE

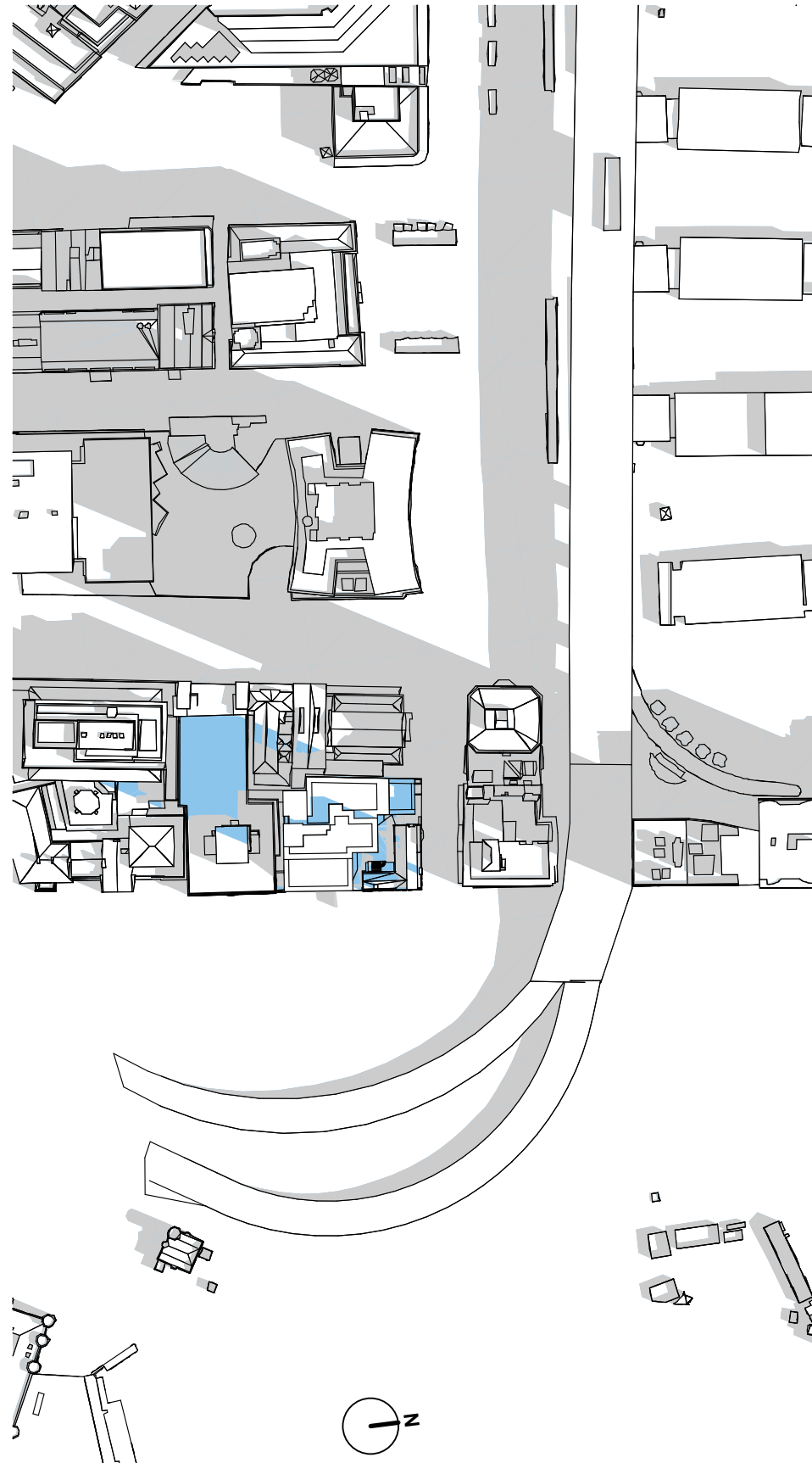
KANNFINCH

17.10.17



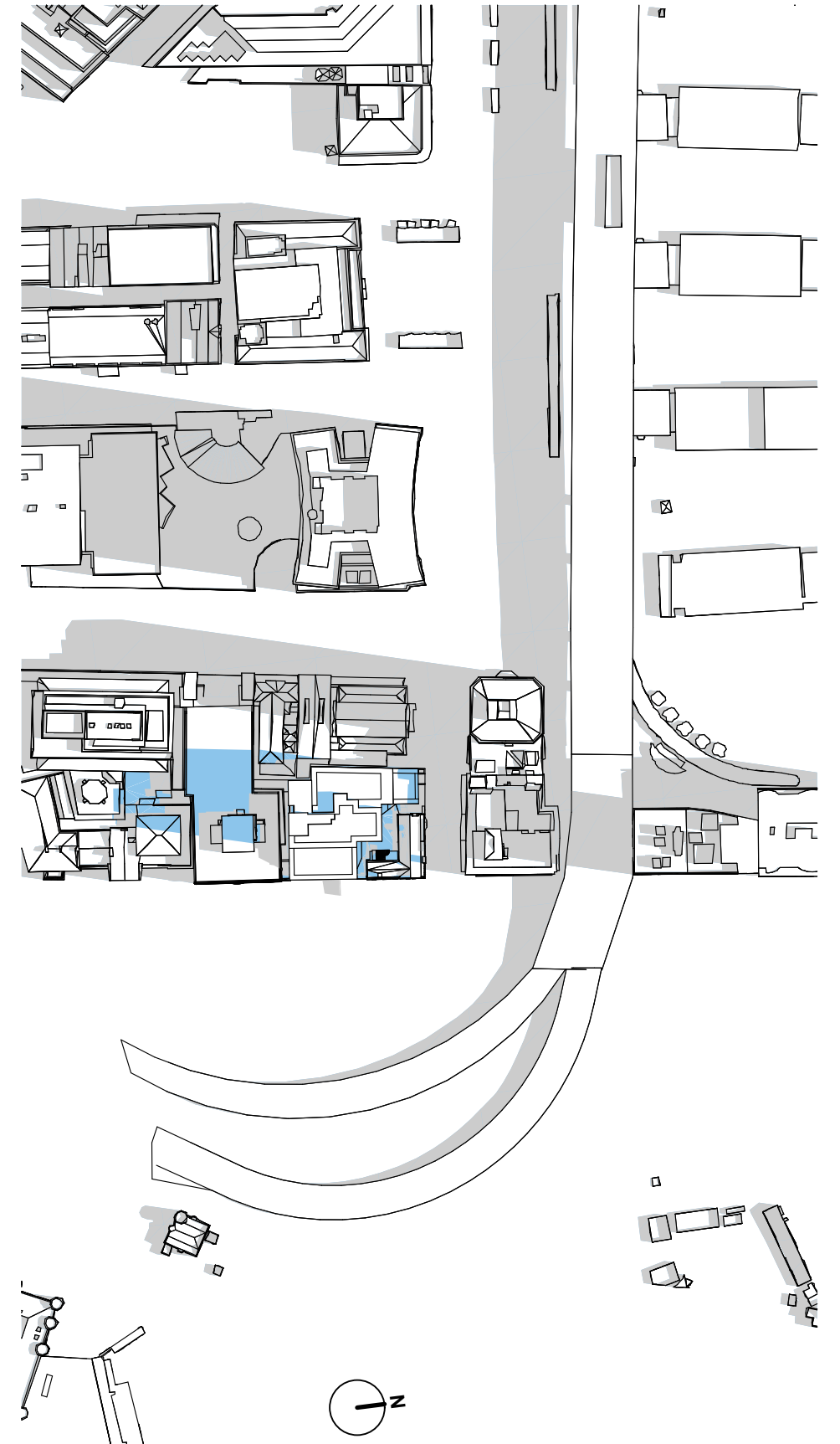
9 AM JUNE 21

01



10 AM JUNE 21

02



11 AM JUNE 21

03

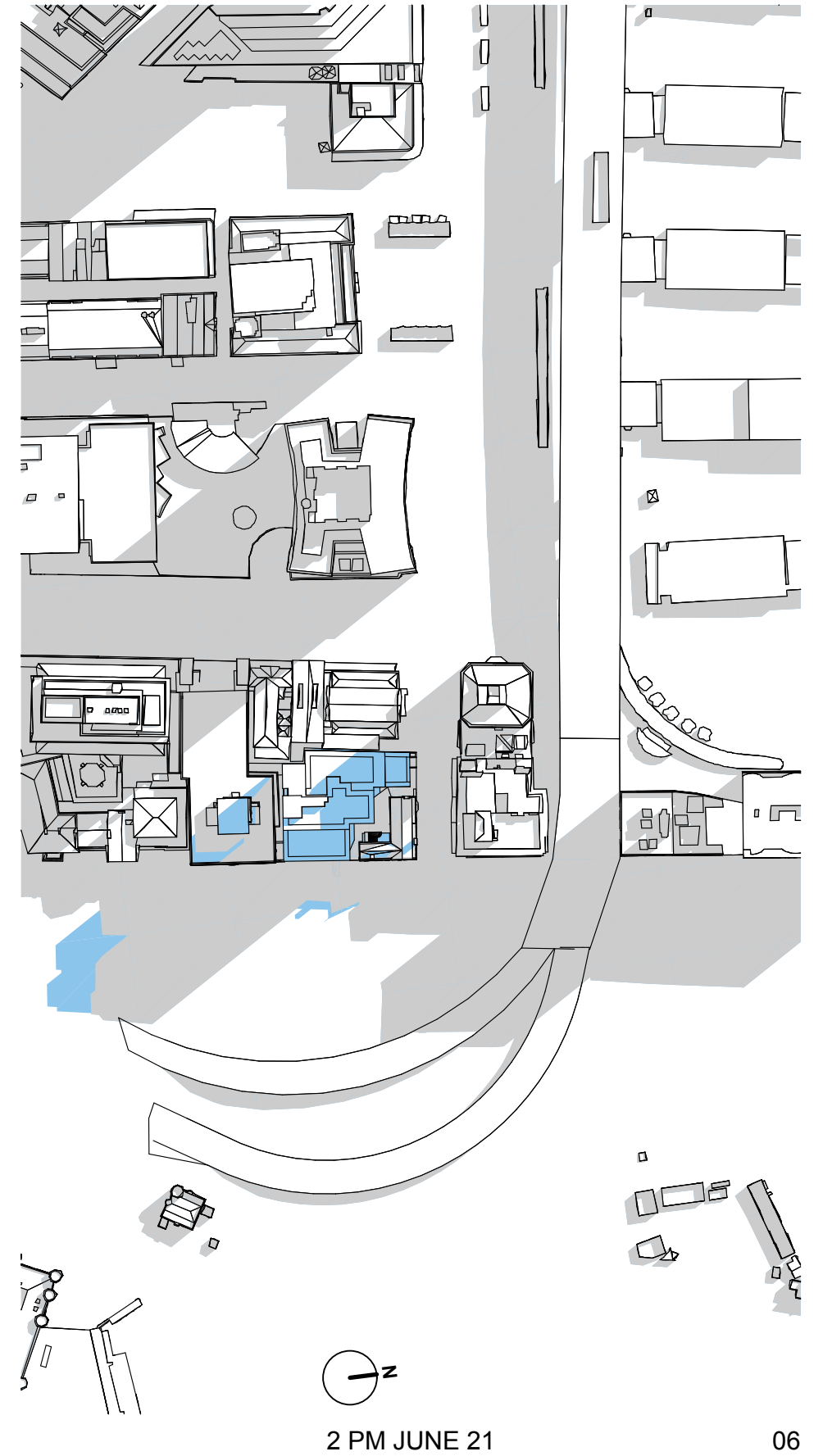
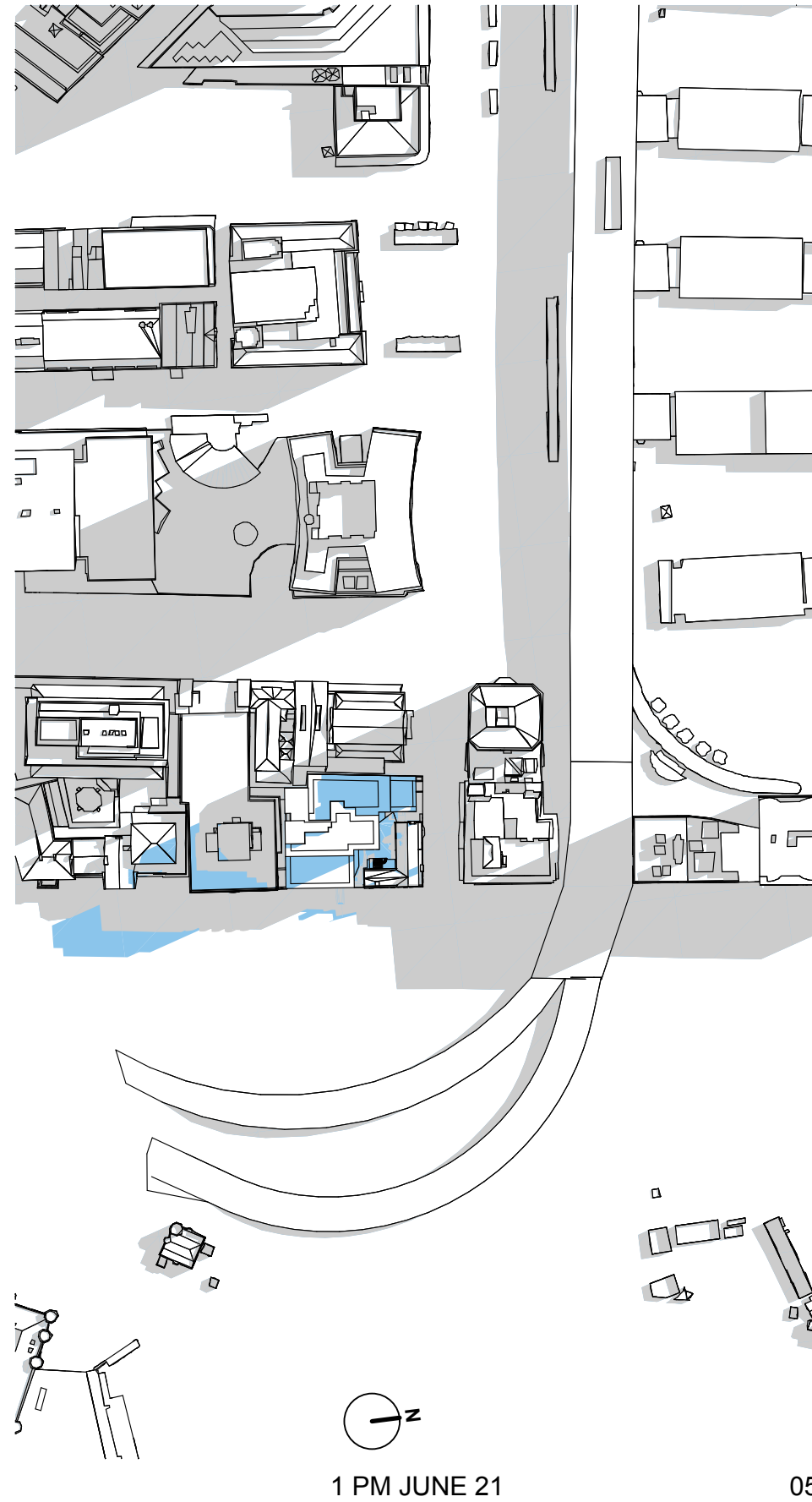
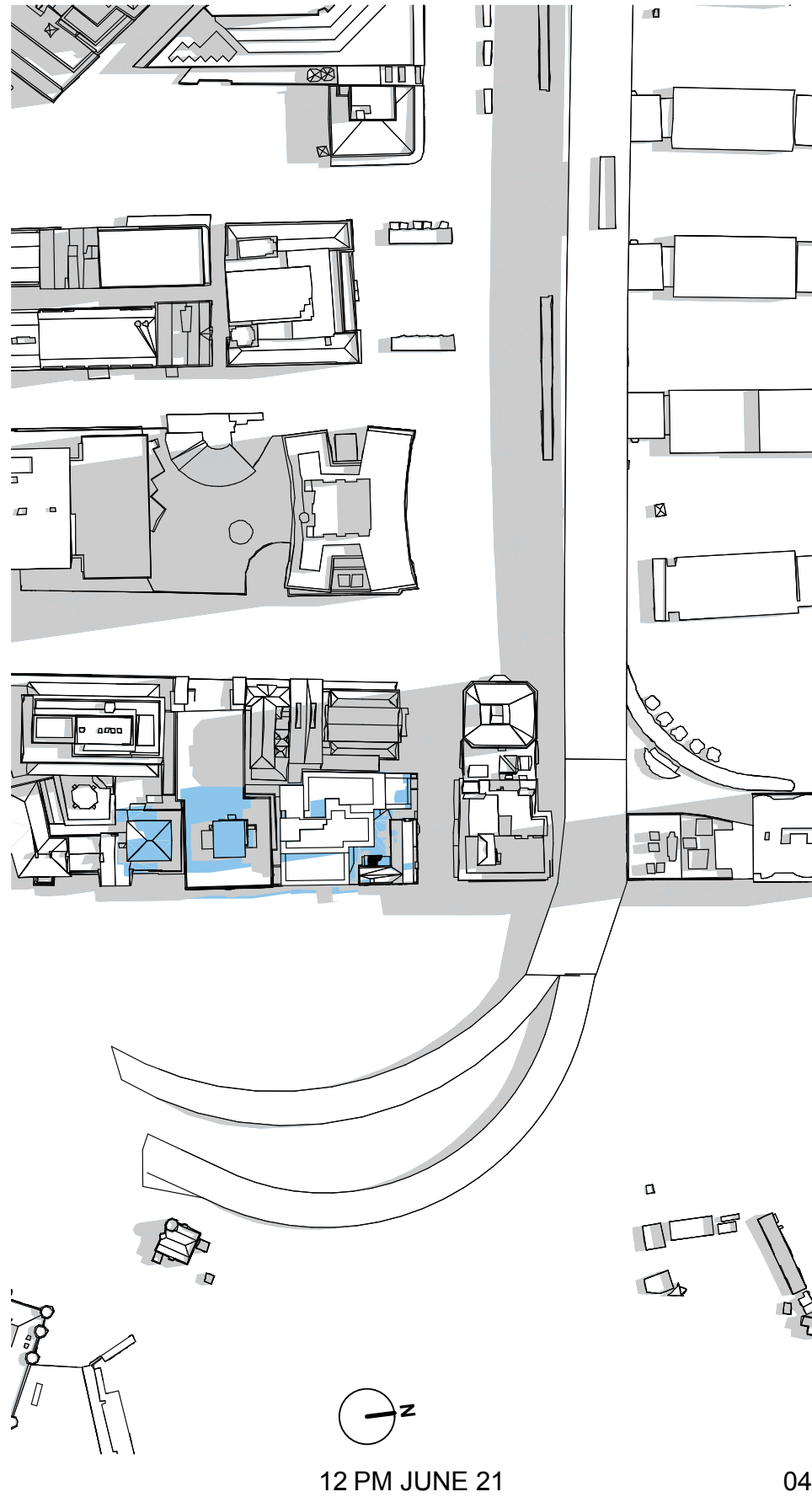
EXISTING SHADOW

ADDITIONAL SHADOW BY PROPOSED ENVELOPE

STAMFORD ON MACQUARIE
SHADOW ANALYSIS

KANNFINCH

17.10.17



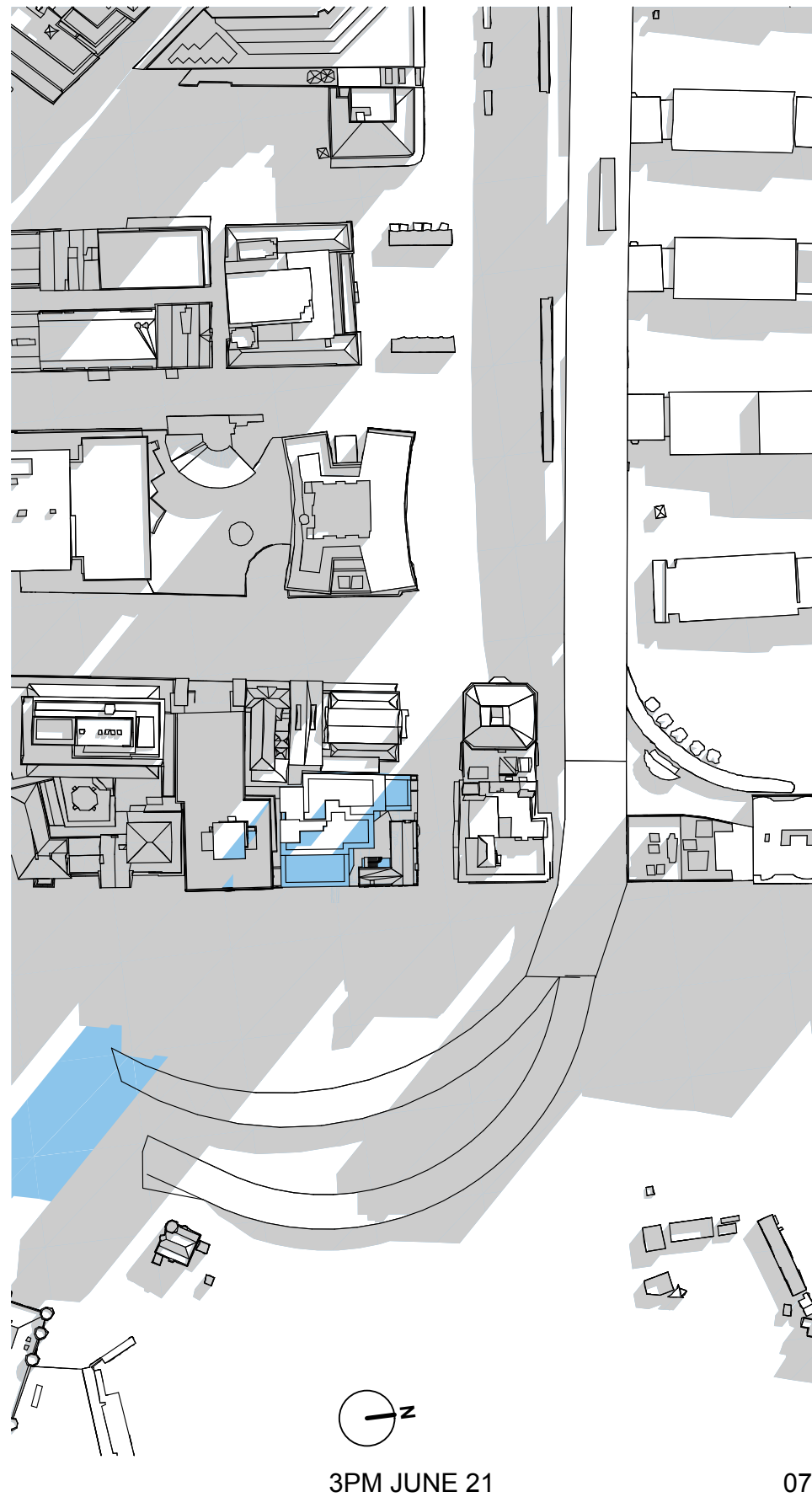
EXISTING SHADOW

ADDITIONAL SHADOW BY PROPOSED ENVELOPE

STAMFORD ON MACQUARIE SHADOW ANALYSIS

KANNFINCH

17.10.17



EXISTING SHADOW

ADDITIONAL SHADOW BY PROPOSED ENVELOPE

STAMFORD ON MACQUARIE SHADOW ANALYSIS

KANNFINCH

17.10.17