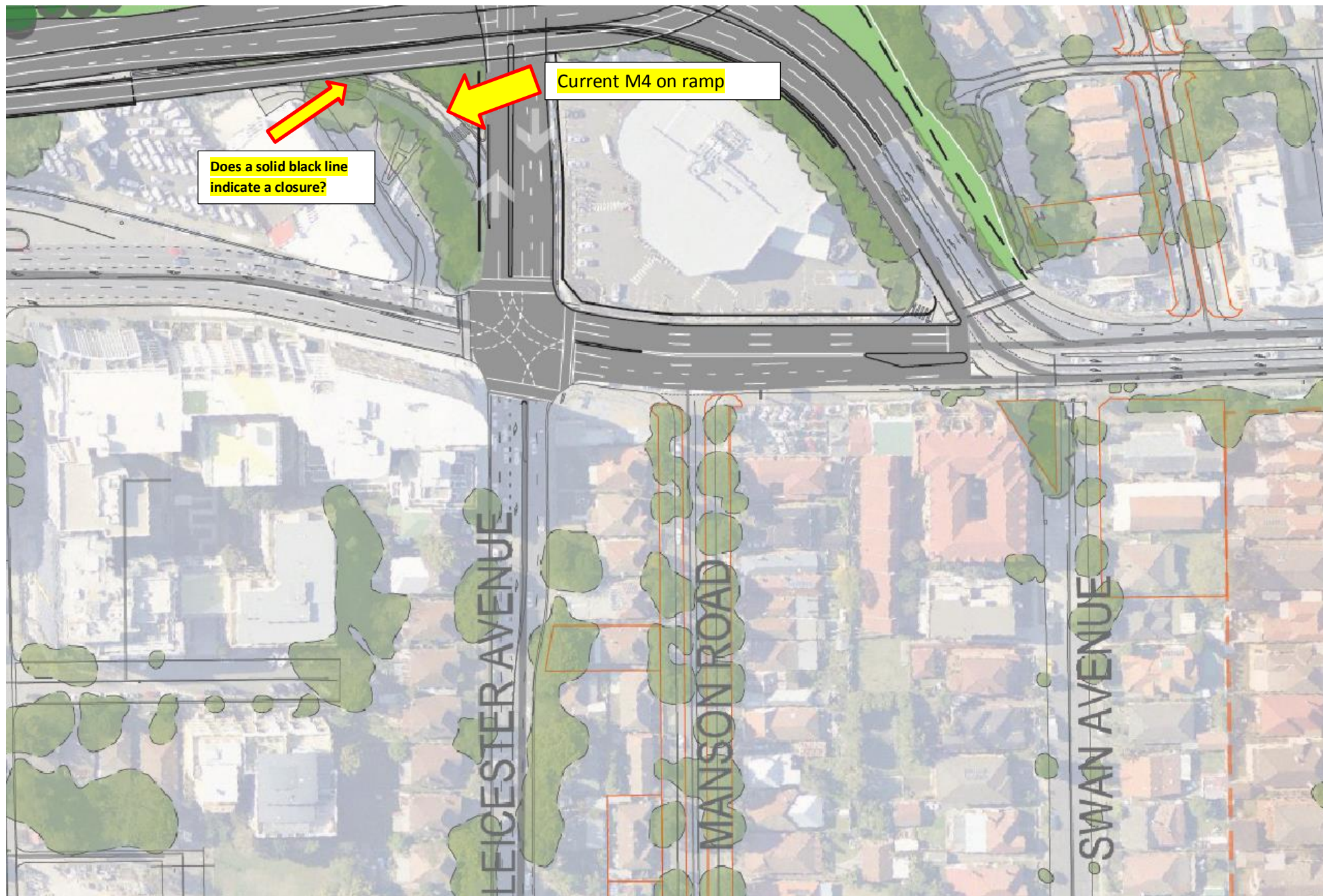




Pictured above is an M4 on ramp which is shared by Leicester Ave traffic at Strathfield crossing Parramatta rd and accessing the on ramp to head to Western Sydney. Also used by traffic on Parramatta road coming from Homebush turning left on Concord road to access the M4 ramp heading west. The WestConnex map below shows this ramp closed pictured by a solid black line on the main M4 map. Will this ramp be open to traffic after the WestConnex?

If not, will Leicester Ave traffic that requires to access the M4 be directed to turn right onto Parramatta rd then to left to access the main M4 entry point? Will the traffic coming from Homebush on Parramatta Rd who requires access to the M4 now be directed to continue through the Leicester Ave intersection to access the main M4 entry point? Travelling from Homebush along Parra rd to access the M4 can sometimes take 30min or more peak times.



Does a solid black line
indicate a closure?

Current M4 on ramp

Problem 2

According to the WestConnex plan further below, motorists travelling to the city from the west will be removed from local streets and traffic diverted directly on to the Wattle St Haberfield exit, Dobroyd Pde then City West Link.

There are major flaws with this plan as the City West Link is crossed by over five local secondary streets with traffic lights, at morning peak times the journey from the Wattle St Haberfield to the intersection of James St and City West Link takes over a Half hour. See key map and illustrations below.

- How will this problem be overcome?
- Will there be lanes added to the City West Link?
- Will some of the traffic lights or turning lanes be removed?
- Will WestConnex only provide an express route to this bottleneck area?

WEBSITE

M4 East (Homebush Bay Drive to Parramatta Road and City West Link)

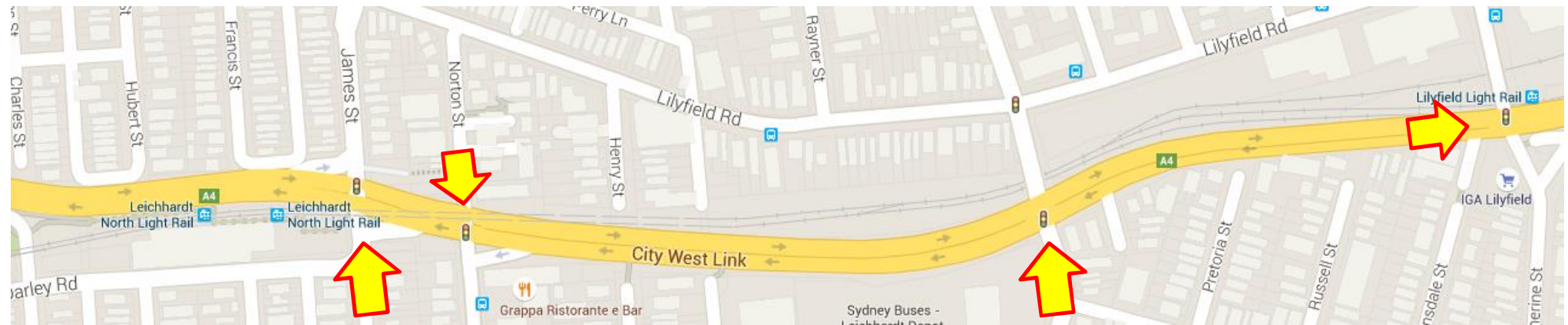
The M4 East will extend the existing M4 Motorway with two new 5.5 kilometre tunnels, three lanes in each direction, from Homebush to Haberfield. The extension will reduce the bottleneck at the end of the M4, saving travel time for motorists and removing cars from local streets. It will provide a bypass of Parramatta Road and a connection to the City West Link.

DOCUMENT

WestConnex, Building for the Future:M4, East (Stage 1), Community Feedback Report. info@westconnex.com.au

- An exit from the Westconnex tunnel eastbound, to Parramatta Road east of Wattle Street, Haberfield and to the City West Link at Haberfield

Key Map



Intersection of James St
Lillyfield and City West
Link.

Looking towards Rozelle



Intersection of Norton St Lillyfield and City West Link

Looking Towards Leichhardt



Intersection of Balmain Rd St Lillyfield and City West Link

Looking Towards Rozelle



Intersection of Catherine St Lilyfield and City West Link

Looking towards the city

